

Balaji

Paradise

— APARTMENTS —

luxury at every corner

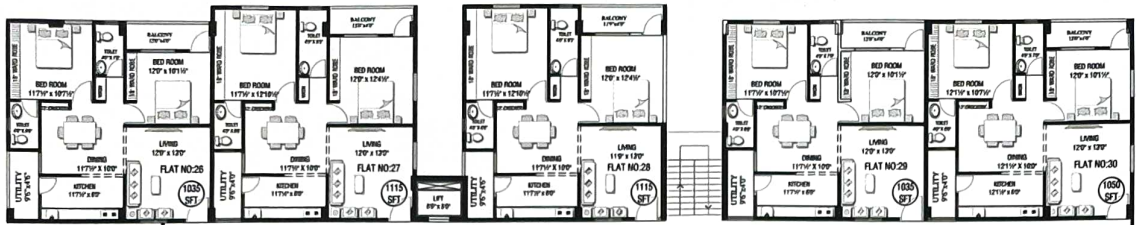


Sri Balaji Developers

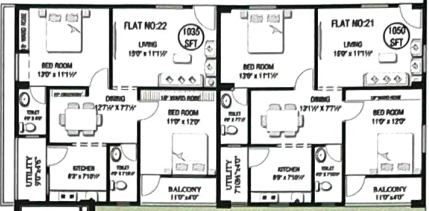
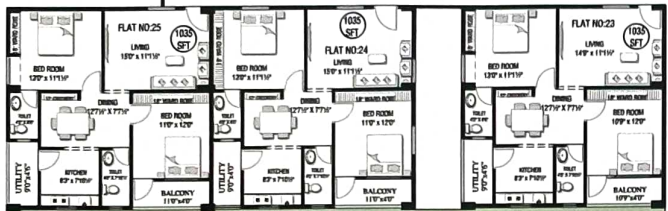
BALAJI GROUP

Schools | Steel | Real Estate | Constructions

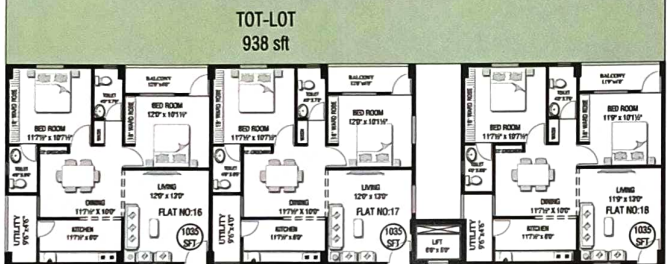
A trusted name since last 22 years



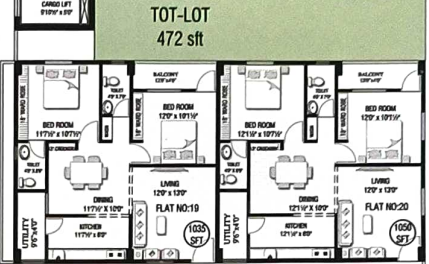
6'6" WIDE CORRIDOR



6'6" WIDE CORRIDOR

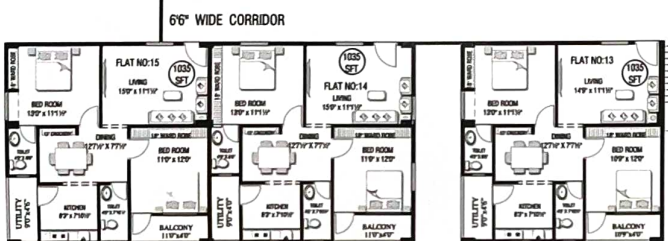


TOT-LOT
938 sft

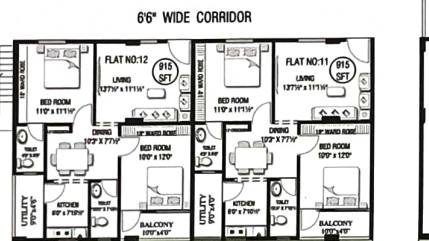


TOT-LOT
472 sft

8'0" WIDE CORRIDOR



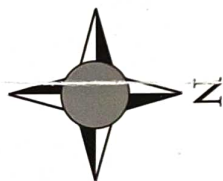
6'6" WIDE CORRIDOR



6'6" WIDE CORRIDOR

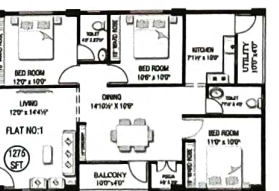
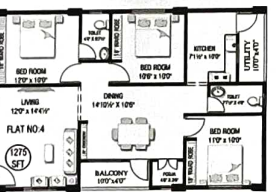
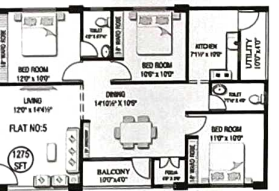
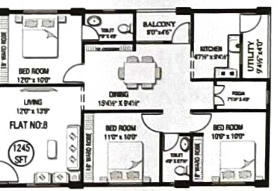
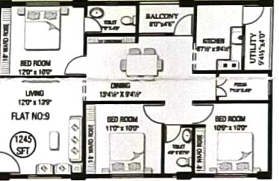


AMENITIES
39'7 1/2" x 28'4 1/2"
1124 SFT X 5 = 5620 SFT



6'6" WIDE CORRIDOR

6'6" WIDE CORRIDOR



It's not just about
living, it's about
living together

SRI BALAJI DEVELOPERS has taken up the project
to provide a thoughtfully designed community
living experience for its residents.

Specifications

Structure

Earthquake Resistant-RRC Framed structure in accordance with IS code.

6" External walls and 4 1/2" internal walls with first class moulded bricks in cement mortar.

Doors

Main Doors: Well seasoned teakwood frame & Door.

Internal Doors: Well seasoned wooden frames with water proof flush door.

Windows

U.P.V.C Windows .

Flooring

2'x2' Vitrified tiles with 4" Skirting in all rooms.(Johnson or Equivalent)

1'x1' Ceramic tiles in balconies and Utility floor areas. (Johnson or Equivalent)

Electrical

Concealed copper wiring of Polycab or equivalent. Adequate Power points with modular switches in all rooms & Kitchen with MCB of standard make. Power points for AC in all Bedrooms, refrigerator and washing machine.

Kitchen

Glazed Ceramic tile dado upto 2' height above Kitchen platform.

Granite platform with S.S sink. Provision for Municipal and bore water.

Provision for RO.

Toilets

Tiles dado upto 6' Height, Wall hung Wash basin of Hindware, or equivalent make (White Colour). Floor mounted W.C of Hindware or equivalent make.

(White Colour) Hot & cold Wall-mixer with shower for master bedroom. All C.P. fittings Hindware or equivalent make. Provision for water heaters. All Internal plumbing of UPVC pipes of ISI Standard company.

Painting

Two Coats Emulsion paint over two coats of putty for Interiors. Water proof apex paint over putty for exteriors.

Lift

8 Passengers lift,(Johnson/Equivalent), 4lifts total. and one Cargo lift.

Communication

Intercom facility to all the units connecting security.

Telephone, cable TV & Internet for Living & master bed rooms.

Generator Backup

100% For all common amenities. 5 Light points & 3 Fan points per flat.

Security

Building under CC Surveillance.

Amenities

Banquet hall ,Gym, Recreation hall, Guest room, Shuttle Court,Children play area.

To Vepagunta



Location Plan

80' Road

Sujatha nagar Jn.

Amenities:

A full fledged club house consisting of Gym, Guest rooms, Recreation room, Banquet hall Dining hall Shuttle court Children play area.



60' Road

40' Road

To Pendurthi

Balaji's paradise