



Aishwaryam Future

your home, your future

PUNAWALE



MahaRERA Registration No. **P52100048742**

"The only way you can predict the future is to build it."

Alan Kay





LUXURY AMENITIES

GROUND FLOOR OPEN SPACE AMENITIES

- 1 - CLUB HOUSE
- 2 - MULTIPURPOSE HALL FOR EVENT AND GAME
- 3 - GYM
- 4 - OUTDOOR GYM
- 5 - ARTIST PAINTING ZONE FOR CREATIVE
- 6 - MULTIPURPOSE PARTY LAWN
- 7 - SPORT COURT MULTIPURPOSE FOR BADMINTON, SKATING ETC.
- 8 - KIDS PLAY AREA
- 9 - PARTY COUNTER AND CAFE TYPE SEATING
- 10 - GYMNASTIC POLE AREA
- 11 - PATHWAY/JOGGING
- 12 - SENIOR SEATING KATTA
- 13 - PERGOLA GAZEBO SEATING
- 14 - INFINITY SWIMMING POOL
- 15 - KIDS POOL
- 16 - POOL DECK
- 17 - PERGOLA SEATING
- 18 - CHANGING ROOM
- 19 - SEATING AREA
- 20 - PATHWA

BUILDING TOP TERRACE FLOOR AMENITIES

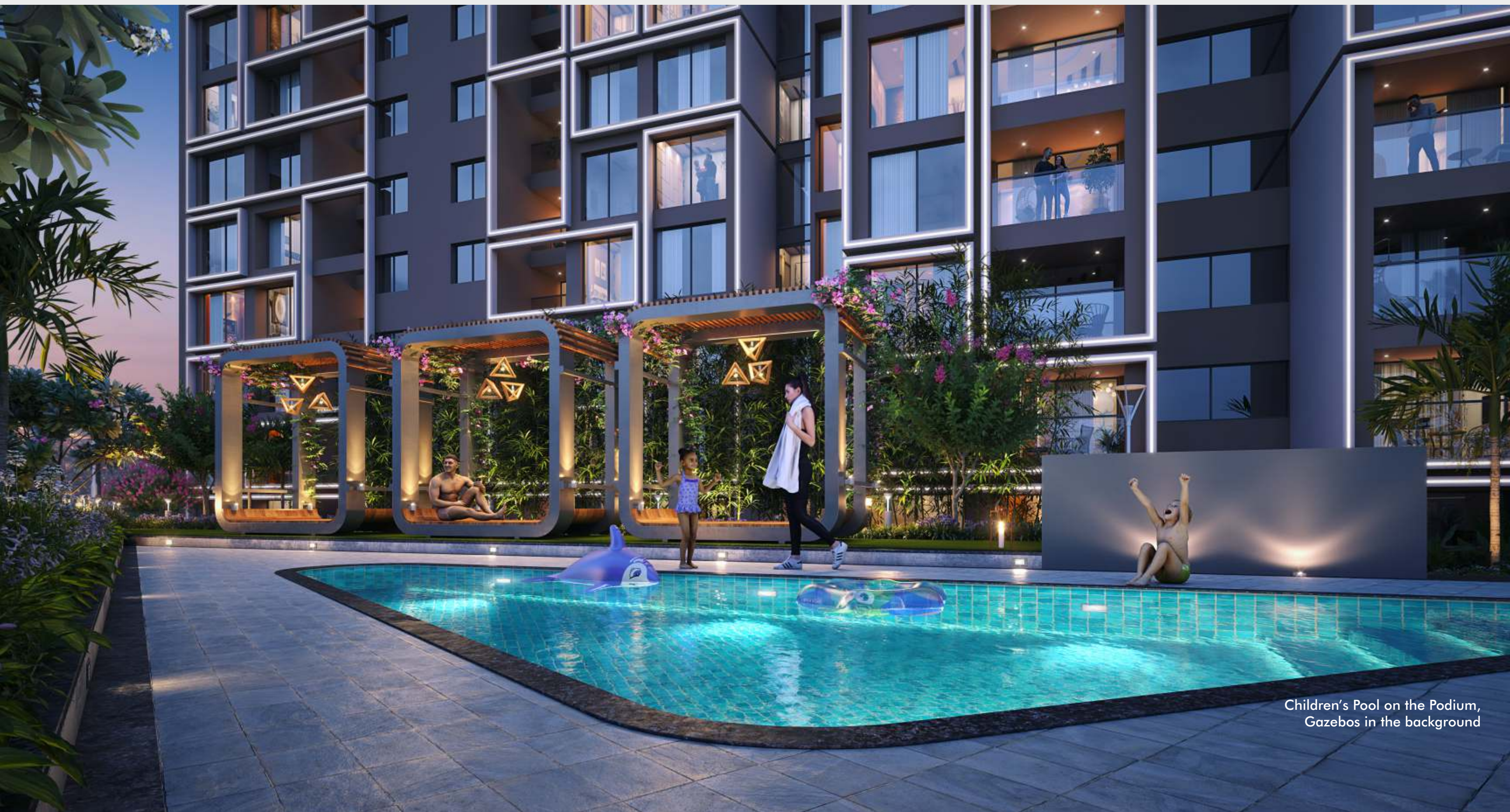
- 21 - PARTY CAFÉ COUNTER AND SEATING TABLE CHAIR
- 22 - BARBEQUE COUNTER AND SEATING TABLE CHAIR
- 23 - CO-WORKING SPACES UNDER SEMI SHADE
- 24 - LIBRARY SEMI SHADE SEATING
- 25 - KIDS STUDY ZONE
- 26 - MEDITATION YOGA DECK AND AREA
- 27 - SUN BATH BENCHES
- 28 - GROUP GATHERING SEATING AREA
- 29 - ACUPRESSURE PATHWAY
- 30 - WALL CLIMBING
- 31 - FIRE SPACE ZONE (9' ELECTRIC FIRE POST)

OTHER AMENITIES ON GROUND

- 32 - DESIGNER ENTRANCE GATE
- 33 - SCHOOL BUS STOP
- 34 - SOCIETY OFFICE
- 35 - DESIGNER ENTRANCE LOBBY
- 36 - FLAG HOSTING POST



The Infinity Edge Swimming Pool
on the Podium



Children's Pool on the Podium,
Gazebos in the background



Heavily Landscaped podium areas
with multiple pause points all around



Lawns with Gazebos attached to the
Multipurpose Hall



The Clubhouse Complex



The Gym:
Indoor (air conditioned) + Outdoor

The Clubhouse Complex





Children's Play Area at Clubhouse Complex,
with cricket nets

Peaceful Zones on the terrace level
with seating and landscaping





Party Zone with BBQ facility,
lawns and seating



Bird Eye view:
Roof top Amenities
DP road to Ravet Bridge

Aishwaryam
Future

Towards
RAVET
Hanging
Bridge

Proposed
60ft **DP**
road

GATE
2

- 80 ft wide proposed BRT road
- Double roads frontage
(1 is 60 ft road connecting to
Aundh - Ravet road + BRT Road)
- Very convenient access
- Rare project to have 2
entries from both roads
- Easy connectivity to Wakad,
Hinjewadi & Akurdi

GATE
1

towards Mukai Chowk

80' wide BRTS Road
(proposed)

towards Bhumkar Chowk

Architectural Excellence,
Redefined Crafted by Mr. Amit Bhat —
Pune's most celebrated architect — the
project brings international design
standards to life.

A Vision Inspired by Singapore's Iconic
Skyline Sleek, contemporary, and timeless
— the elevation draws inspiration from
Singapore's finest architectural marvels.

Every Residence, A Signature View
Thoughtfully designed corner residences
offering sweeping 180° vistas, ensuring
light, space, and privacy like never
before.

The World's Leading Brands, At Your
Doorstep An exclusive commercial
promenade featuring top international
retail brands, curating an unmatched
lifestyle experience.





MD
GROUP

**Aishwaryam
Future**

DEEPTO FOOT



Choose Comfort

TOTES

ART GALLERY

Fashion Hub

ITASI WEST

R Reader's Hub

LABELA COSMETICS

Y We Promise Comfort

Main Gate of Aishwaryam Future
with shopping complex alongside



Premium Showrooms, Shops,
CAFÉ Spaces, Daily conveniences &
much more





Building Lobby with waiting lounge



The future starts today, not tomorrow.

Pope John Paul II



Towards
RAVET
Hanging
Bridge

Proposed
60ft **DP**
road

GATE
2

GATE
1

1 2 1 2 1 2
A B C
4 3 4 3 4 3

towards Mukai Chowk

80' wide BRTS Road
(proposed)

towards Bhumkar Chowk



Premium by Design



only 4 flats per floor



2 staircases



Privacy for each flat



Spacious Bay windows
for every bedroom



3 lifts per floor



3 Sides Open



Individual entry space
outside door for each flat



Grand lobby passages

Typical Floorplan



Flat Nos.	Type	Carpet sq.mt	Open Balcony sq.mt	Dry Balcony sq.mt	Total Carpet sq.mt sq.ft	
101, 201, 301, 401, 601, 701, 801, 901, 1001, 1201, 1301, 1401, 1501, 1701, 1801, 1901, 2001	2 BHK	61.50	5.02	2.69	69.21	745
102, 202, 302, 402, 602, 702, 802, 902, 1002, 1202, 1302, 1402, 1502, 1702, 1802, 1902, 2002	2 BHK	61.50	5.02	2.69	69.21	745
103, 203, 303, 403, 603, 703, 803, 903, 1003, 1203, 1303,1403, 1503, 1703, 1803, 1903, 2003	2 BHK	61.50	5.02	2.69	69.21	745
104, 204, 304, 404, 604, 704, 804, 904, 1004, 1204, 1304, 1404, 1504, 1704, 1804, 1904, 2004	2 BHK	61.50	5.02	2.69	69.21	745

sq m = square meter, sq ft = square feet

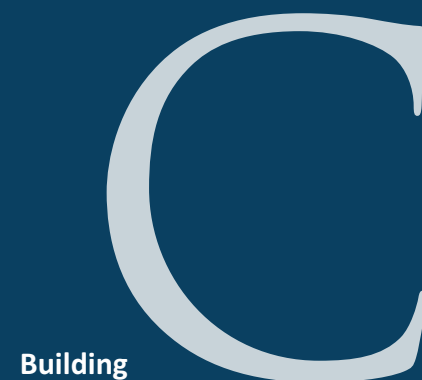


Aishwaryam
Future
your home, your future
PUNAWALE



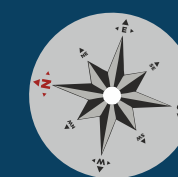
MahaRERA Registration No. P52100048742

Typical Floorplan



Flat Nos.	Type	Carpet sq.mt	Open Balcony sq.mt	Dry Balcony sq.mt	Total Carpet	
					sq.mt	sq.ft
101, 201, 301, 401, 601, 701, 801, 901, 1001, 1201, 1301, 1401, 1501, 1701, 1801, 1901, 2001	2.5 BHK	72	4.57	2.93	79.50	856
102, 202, 302, 402, 602, 702, 802, 902, 1002, 1202, 1302, 1402, 1502, 1702, 1802, 1902, 2002	3 BHK	84.34	5.00	3.30	92.64	997
103, 203, 303, 403, 603, 703, 803, 903, 1003, 1203, 1303, 1403, 1503, 1703, 1803, 1903, 2003	3 BHK	84.34	5.00	3.30	92.64	997
104, 204, 304, 404, 604, 704, 804, 904, 1004, 1204, 1304, 1404, 1504, 1704, 1804, 1904, 2004	2.5 BHK	72	4.57	2.93	79.50	856

sq m = square meter, sq ft = square feet



Aishwaryam
Future
your home, your future
PUNAWALE



Typical Floorplan

2 BHK UNIT

Carpet Area 745 sq. ft.

Aishwaryam
Future
your home, your future
PUNAWALE

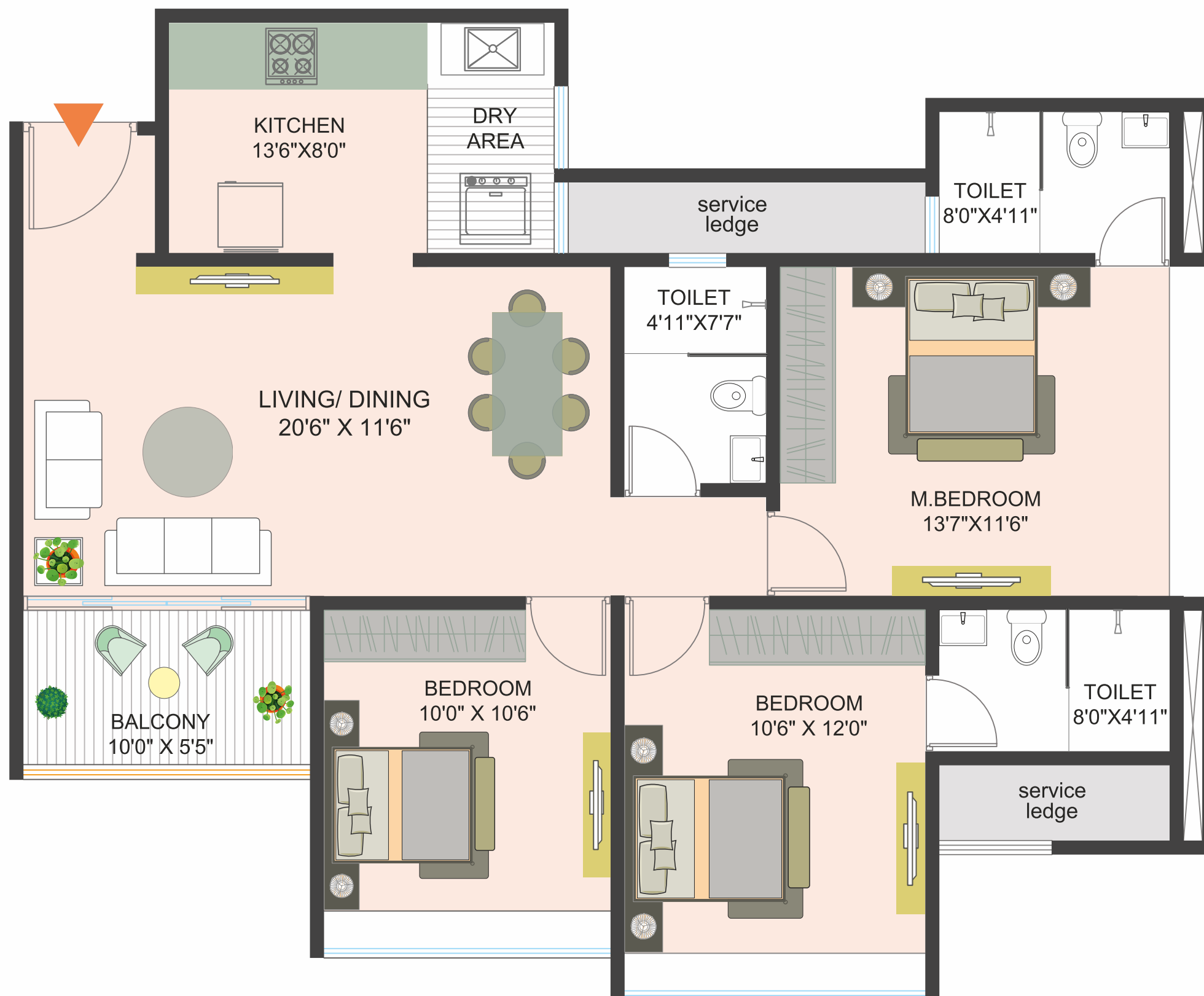


Typical Floorplan

2.5 BHK UNIT

Carpet Area 856 sq. ft.

Aishwaryam
Future
your home, your future
PUNAWALE



Typical Floorplan

3 BHK UNIT

Carpet Area 997 sq. ft.

Aishwaryam
Future
your home, your future
PUNAWALE





SPECIFICATIONS

- RCC**
- Earthquake resistant structure as per seismic design.
- Entrance lobby** (Ground Floor)
- Decorative ceiling with LED lights
 - Door controlled by automation system
 - Air conditioned lobby
- Brick work & Plaster**
- Siporex /Ecolite/ equivalent AAC Blocks
 - External - double coat process sand faced plaster
 - Internal - super fine POP / Gypsum of Saint Gobain or Equivalent
- Paint**
- External - Superior crack resistant, weather proof acrylic paint of Asian / Dulux/ Jotun
 - Internal - Premium Emulsion paint of Asian / Dulux/ Jotun
- Kitchen**

- Premium Granite kitchen platform
 - Glazed/ Ceramic tiles for dado up to lintal level
 - LPG reticulated piped gas supply
 - S. S. sink of Franke / Equivalent
- Terrace**
- SS Railing with toughened glass
- Bathrooms**
- Designer dado up to lintel level
 - Premium quality sanitary fittings
 - Jaquar/ Toto single lever fixtures
 - Mirror in master bathroom
 - Grid ceiling in all bathroom
 - Wall hung EWC
 - Concealed flush valves
 - Counter wash basin in all bathrooms
 - Granite and plywood sandwiched door frames
 - Solar heated water in master bathroom
- Doors / Windows**
- Decorative Laminated main door with exclusive

- fittings of Godrej / Hafele
 - Internal laminated flush doors
 - Full jamb width laminated plywood door frame
 - Aluminium sliding powder coated premium sections for terrace and windows with mosquito mesh
- Plumbing**
- Concealed plumbing with high quality CPVC and UPVC pipes of Astral/ Equivalent
 - Provision for washing machine in dry balcony
- Flooring**
- Fully vitrified Tiles - 800mm x 800mm of Vermora /Asian Equivalent
 - Anti-skid tiles in bathrooms and terraces
 - Dado tiles in dry balcony upto 32” high
- Electrification**
- Concealed copper wiring with earth leakage circuit breakers
 - TV , DTH points in living and en-suite bedrooms
 - Adequate electrical points Points for Chimney,

- washing machine, fridge, micro wave and water purifier
- Shuttered plug socket to a void accidental contact
- Provision for inverter backup
- Schneider / Equivalent premium quality modular switches
- Split A/C provision in living and ensuite bedrooms
- 3 Phase power connection for all apartments
- Exhaust fans Point in kitchen

Automation & Security

- Inter com connectivity between all apartments & security cabin
- Video door phone for all apartments
- CCTV Surveillance in campus

Others

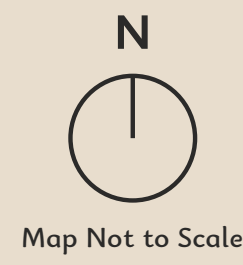
- Fire fighting system
- Signage and Letter box for each apartment
- Internal concrete / paved roads
- Decorative compound wall
- Grand Entrance gate with security cabin

- 100% DG backup for complete common load
- Premium automatic elevators of Schindler /Johnson
- Service platform in duct for fixing of AC outdoor unit
- Sewage Treatment Plant
- Organic Waste Converter
- Water Treatment Plant
- Rain Water Harvesting



- Educational Institute
- Railway Station
- Retail
- Hospital
- Office
- Hotel & Restaurant
- Airport
- Stadium
- Planned Hinjewadi - Shivajinagar Metro Line

EDUCATIONAL INSTITUTES	
ORCHIDS The International School	4.2 Km
Akshara internation	6 kms
Podar Intl. School, Wakad (CBSE)	4.9 Km
Indira College of Commerce & Science	4.4 Km
D. Y. Patil International University	3.6 Km
Symbois Skills university	4.5 kms
RAILWAY STATION	
Akurdi Railway Station	2.9 Km
Pune Station Railway Station	22 Km
Upcoming Metro Station	4 kms
HOSPITALS	
Aditya Birla Hospital	7 Km
Punawale Multispeciality Hospital	900 meters
Life Care Hospital	2 kms
SHOPPING	
Dmart	4 Kms
Phoenix Mall (Upcoming)	6.5 Kms
BANKS	
HDFC Bank	400 Meters
SBI Bank	3.5 Kms
ICICI Bank	3.5 Km





Aishwaryam Future

your home, your future

PUNAWALE

S. No. 49, Opp Bharat Petroleum,
Near Enchanted Gardens Nursery,
Pune Bypass, Punawale,
Pune - 411033.



MahaRERA Registration No. **P52100048742**

