



maharera.mahaonline.gov.in  
Maha-RERA Registration No.  
P50500049149  
P50500049151

*Come home to paradise, everyday!*



## **LEVERAGE GREEN HEIGHTS**

2/2.5/3 BHK PREMIUM RESIDENCES  
AT CHINCHBHUVAN EXTN., OFF WARDHA ROAD, NAGPUR

ARCHITECT'S PERSPECTIVE

WING-A

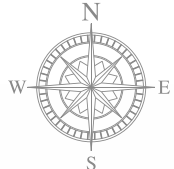
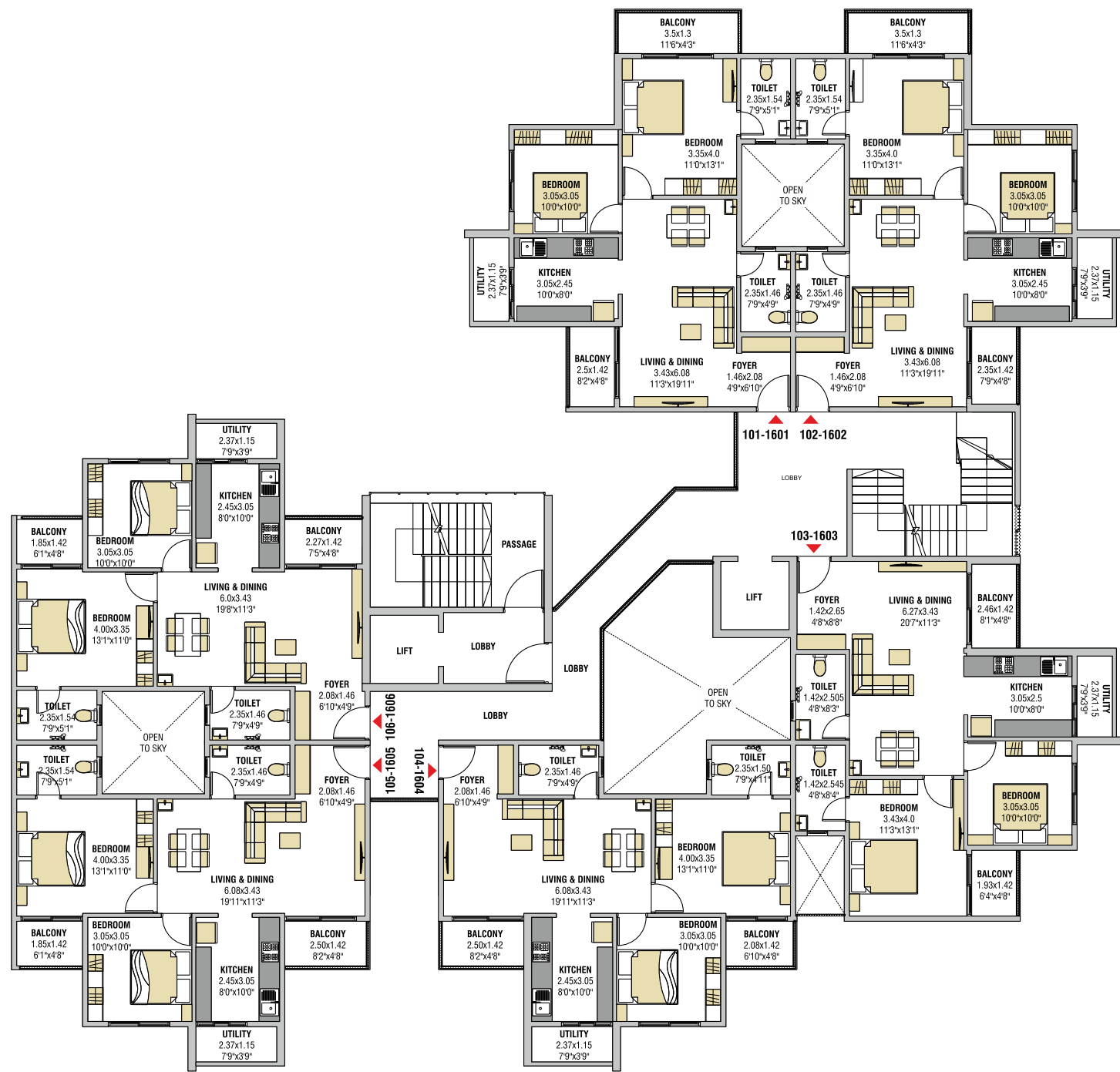
WING-B



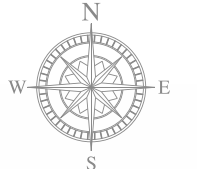
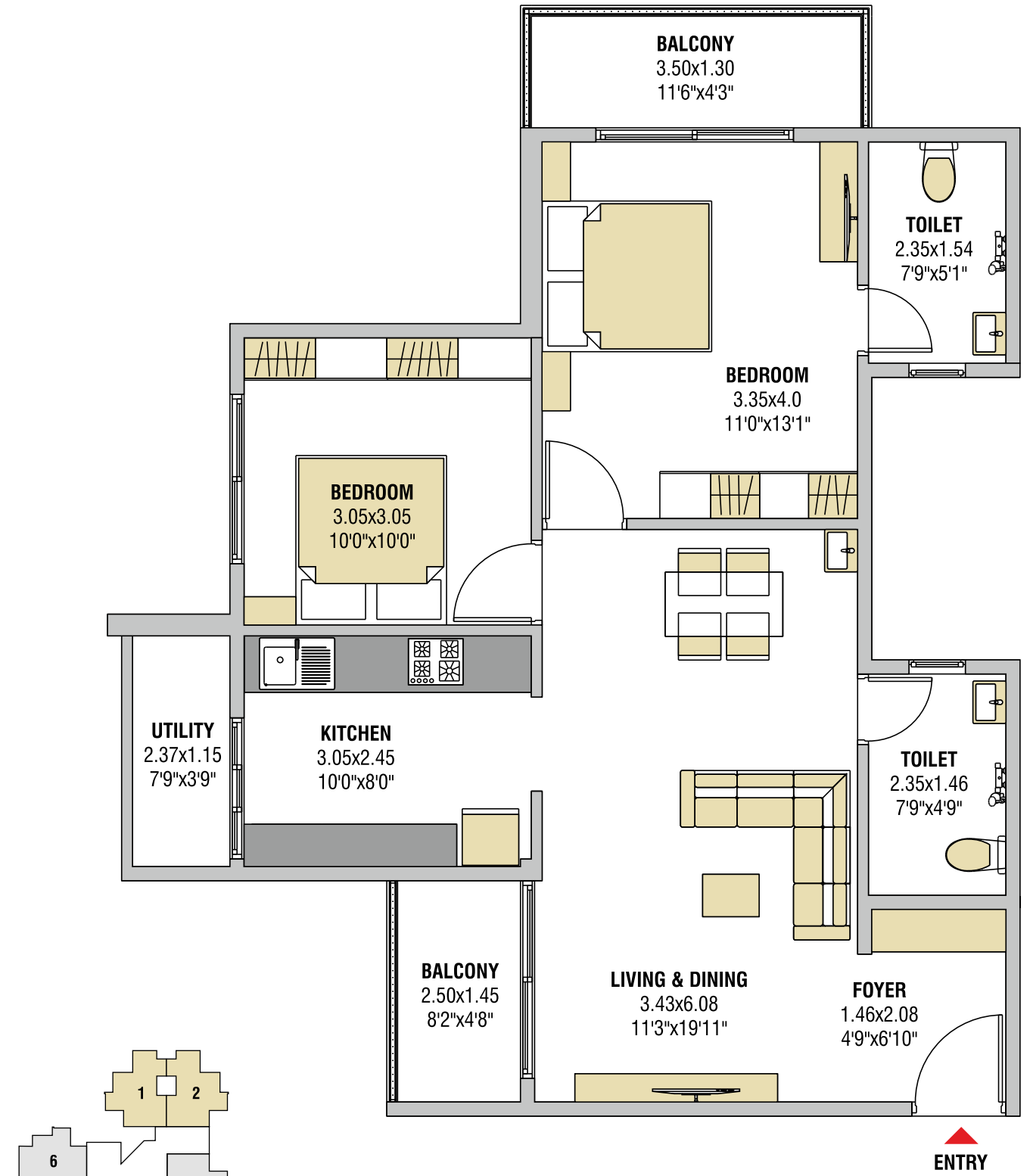
**SITE ADDRESS:** LEVERAGE GREEN HEIGHTS, KHASRA NO. 37/1/2/K/2, SHANKARPUR, NAGPUR - 441 108

**Note:** Wing-A and Wing-B (11 storeys) are under RERA Registration & Sale. Remaining Wings are proposed development.

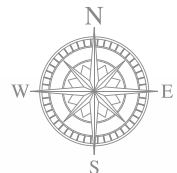
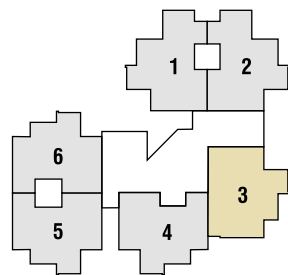
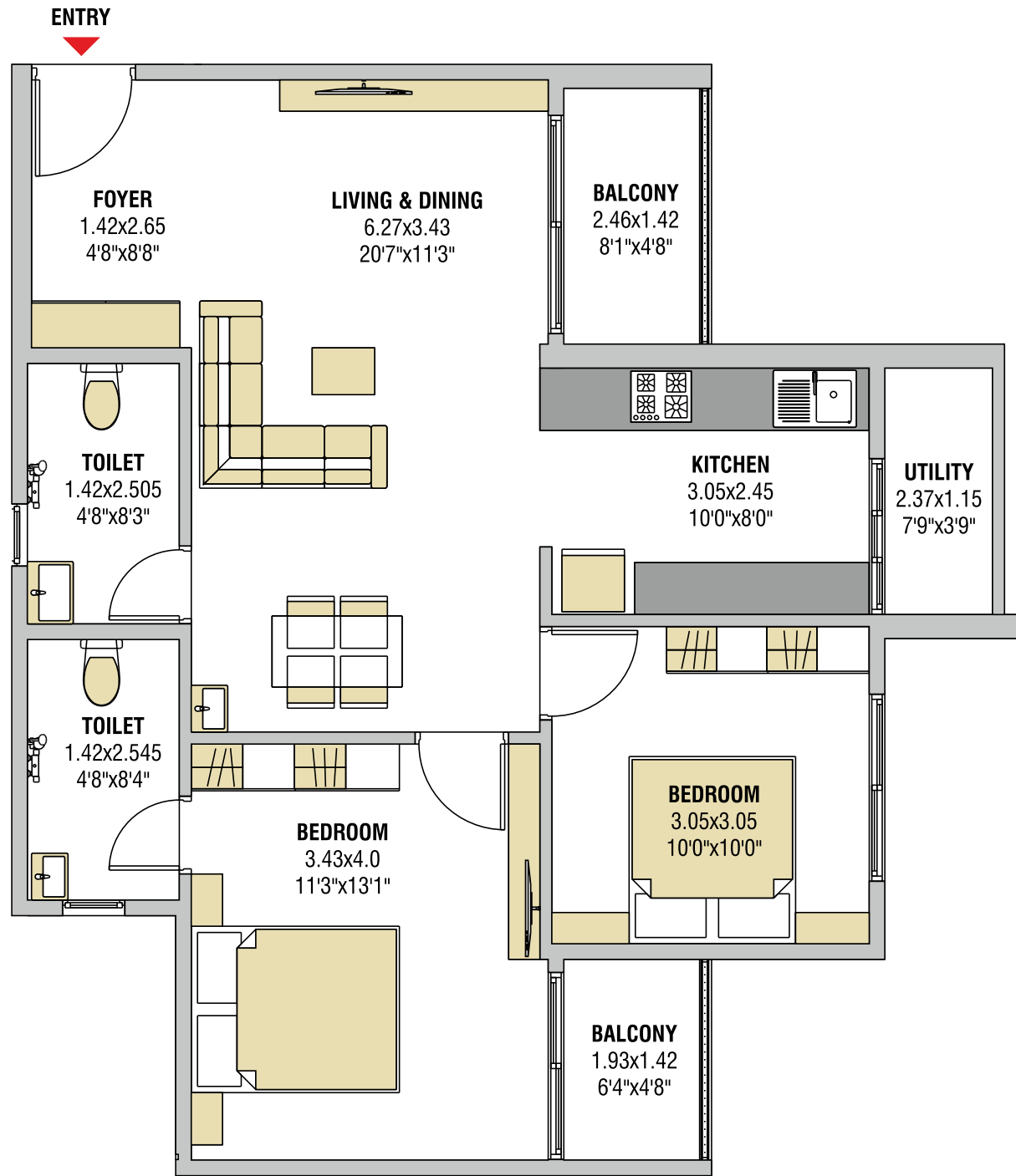
WING-A (2-BHK):  
TYPICAL FLOOR PLAN



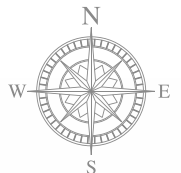
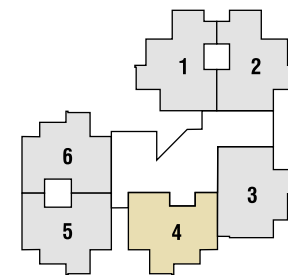
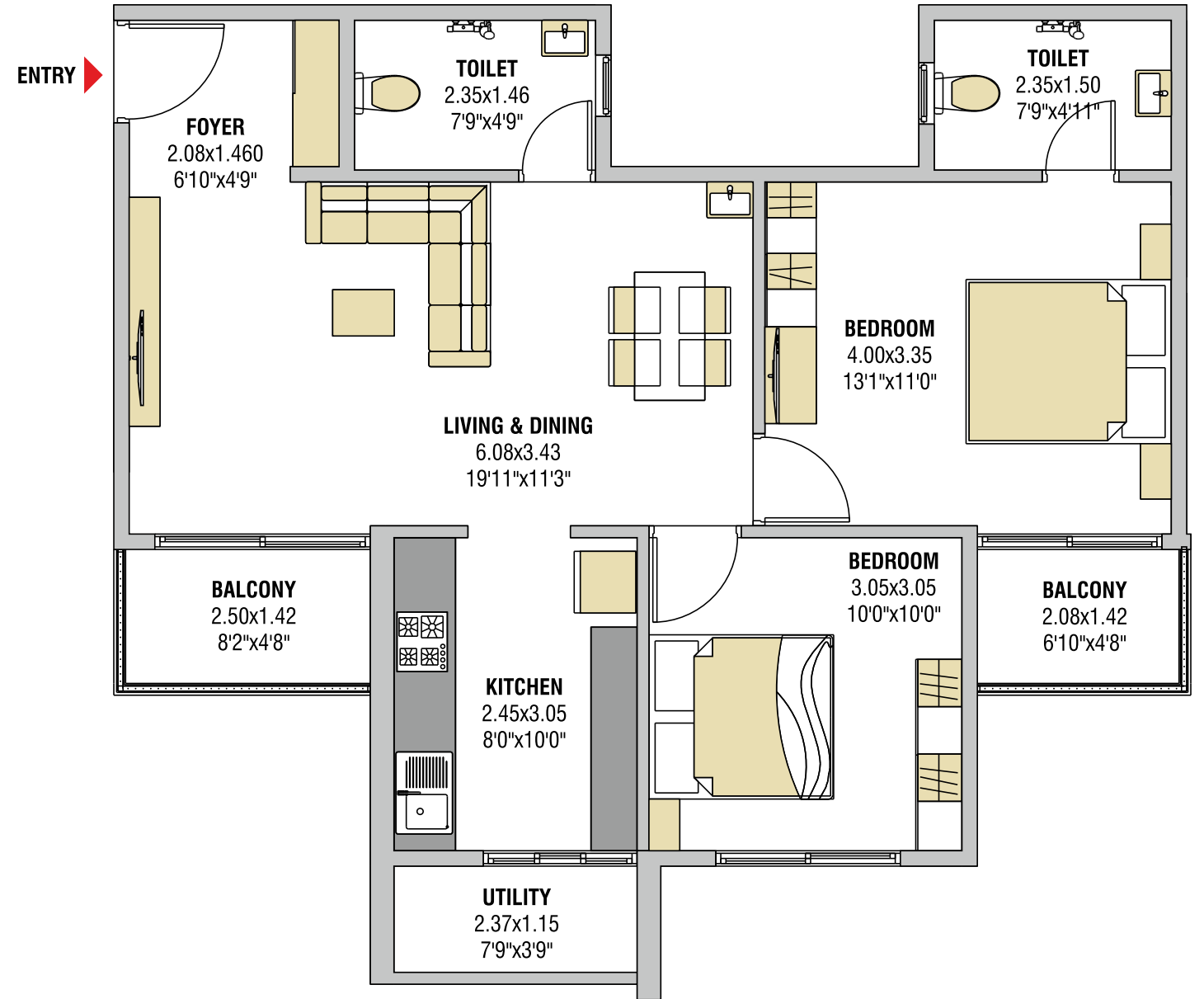
WING-A: 2-BHK UNIT FLOOR PLAN  
FLAT NO. 101-1601, 102-1602



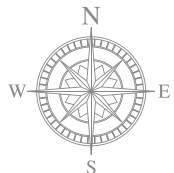
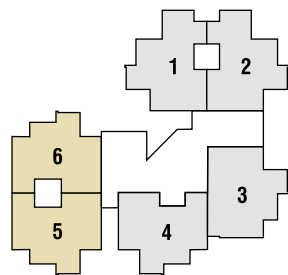
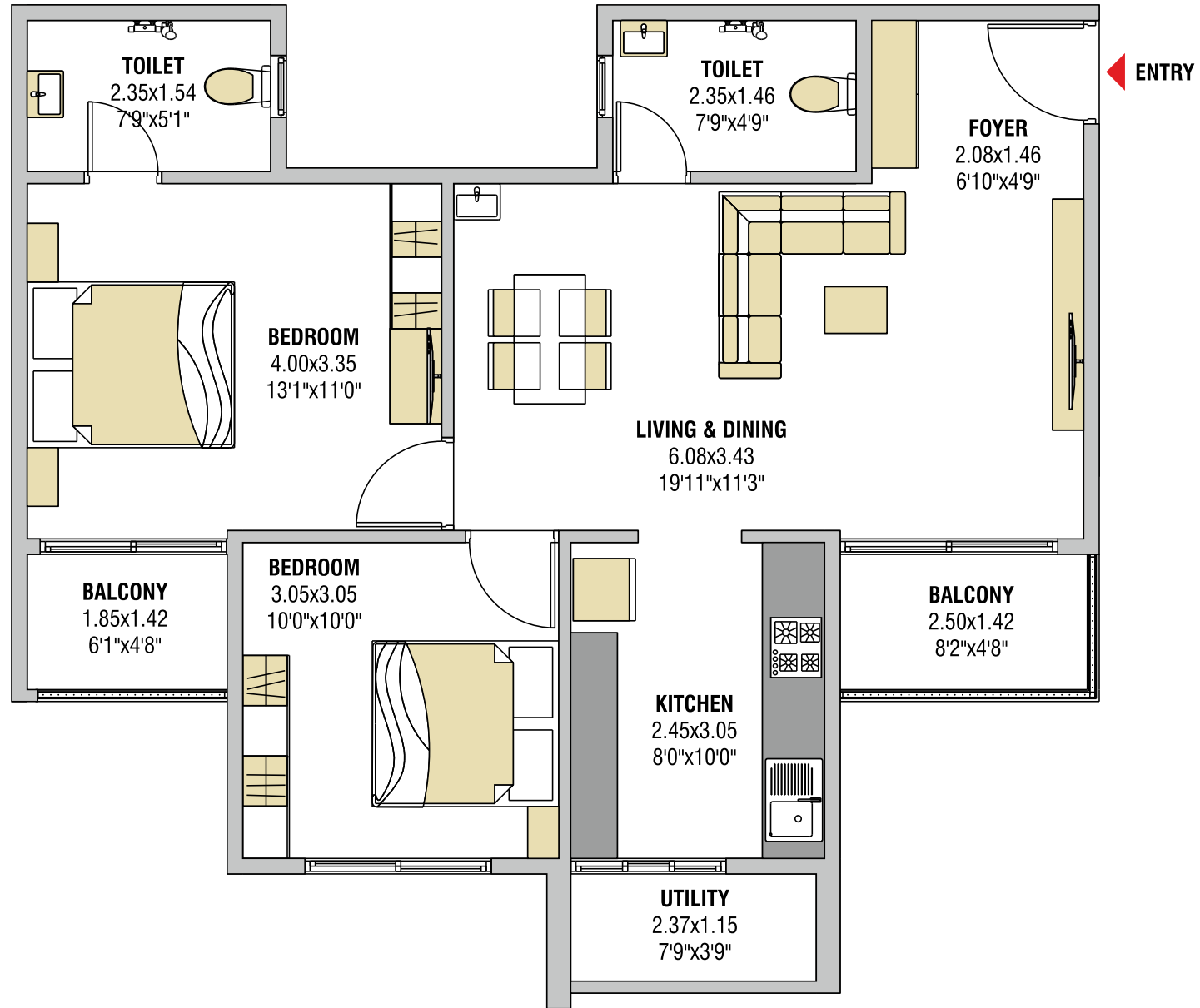
WING-A: 2-BHK UNIT FLOOR PLAN  
FLAT NO. 103-1603



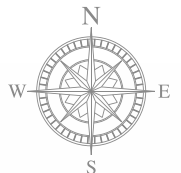
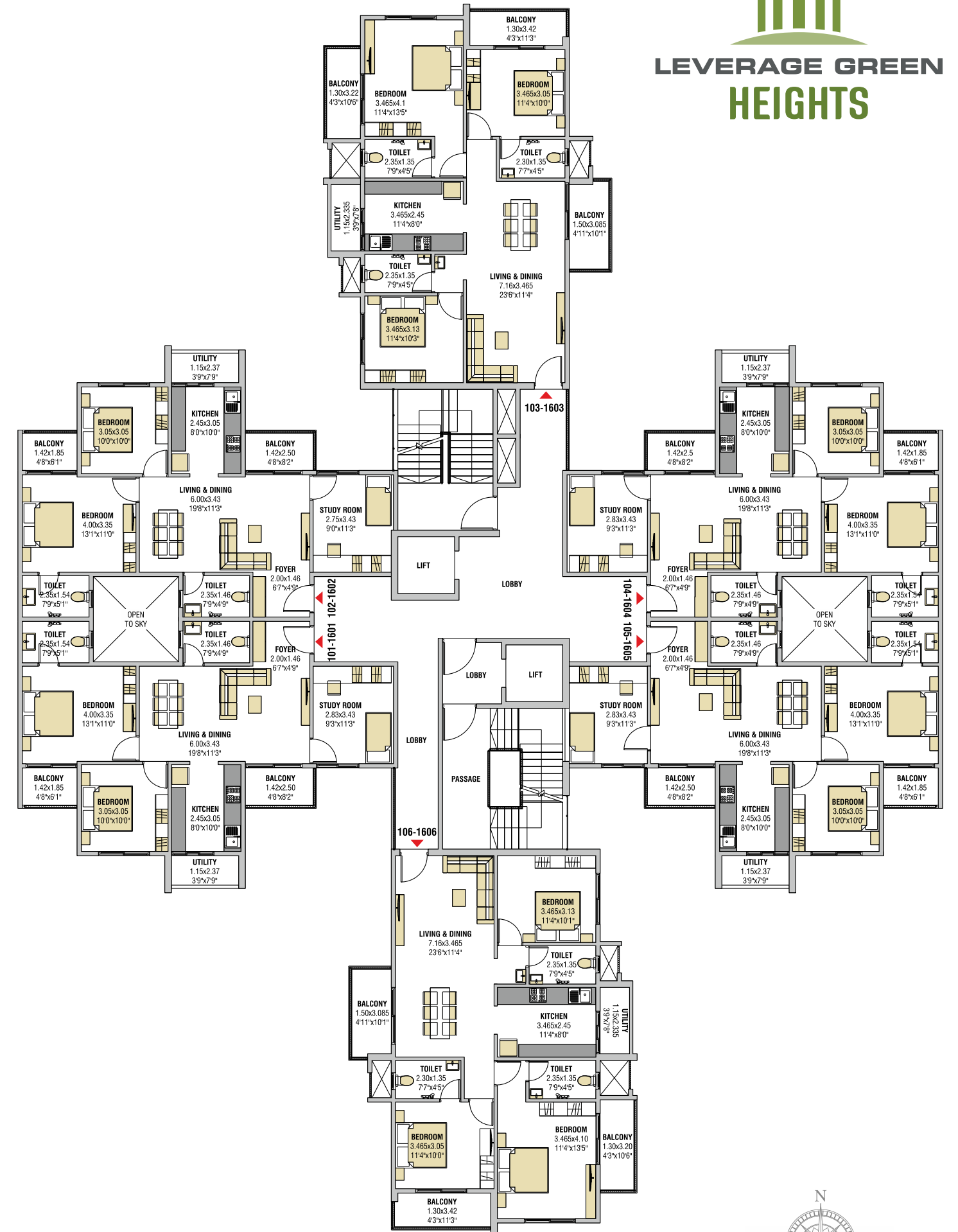
WING-A: 2-BHK UNIT FLOOR PLAN  
FLAT NO. 104-1604



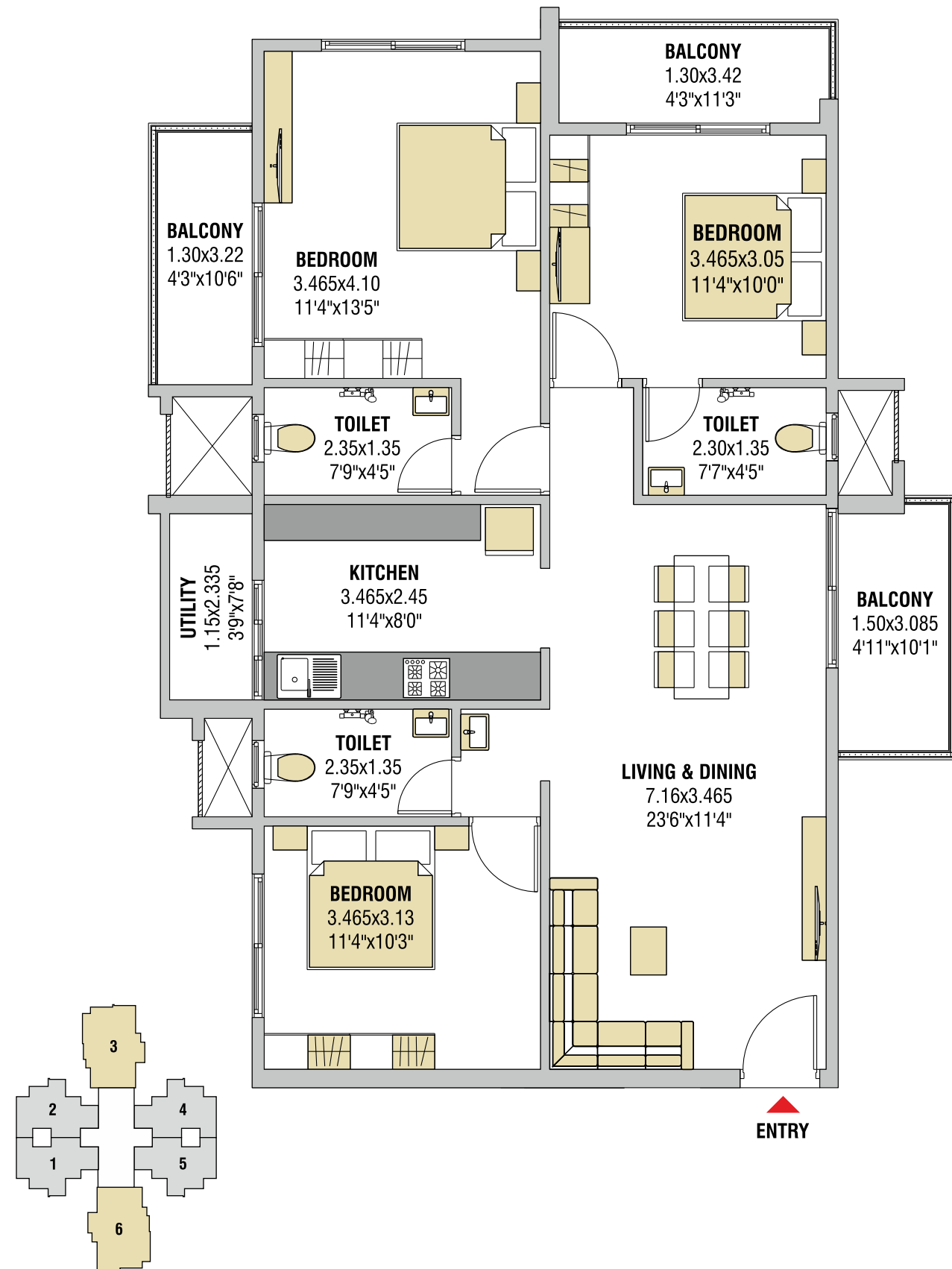
WING-A: 2-BHK UNIT FLOOR PLAN  
FLAT NO. 105-1605, 106-1606



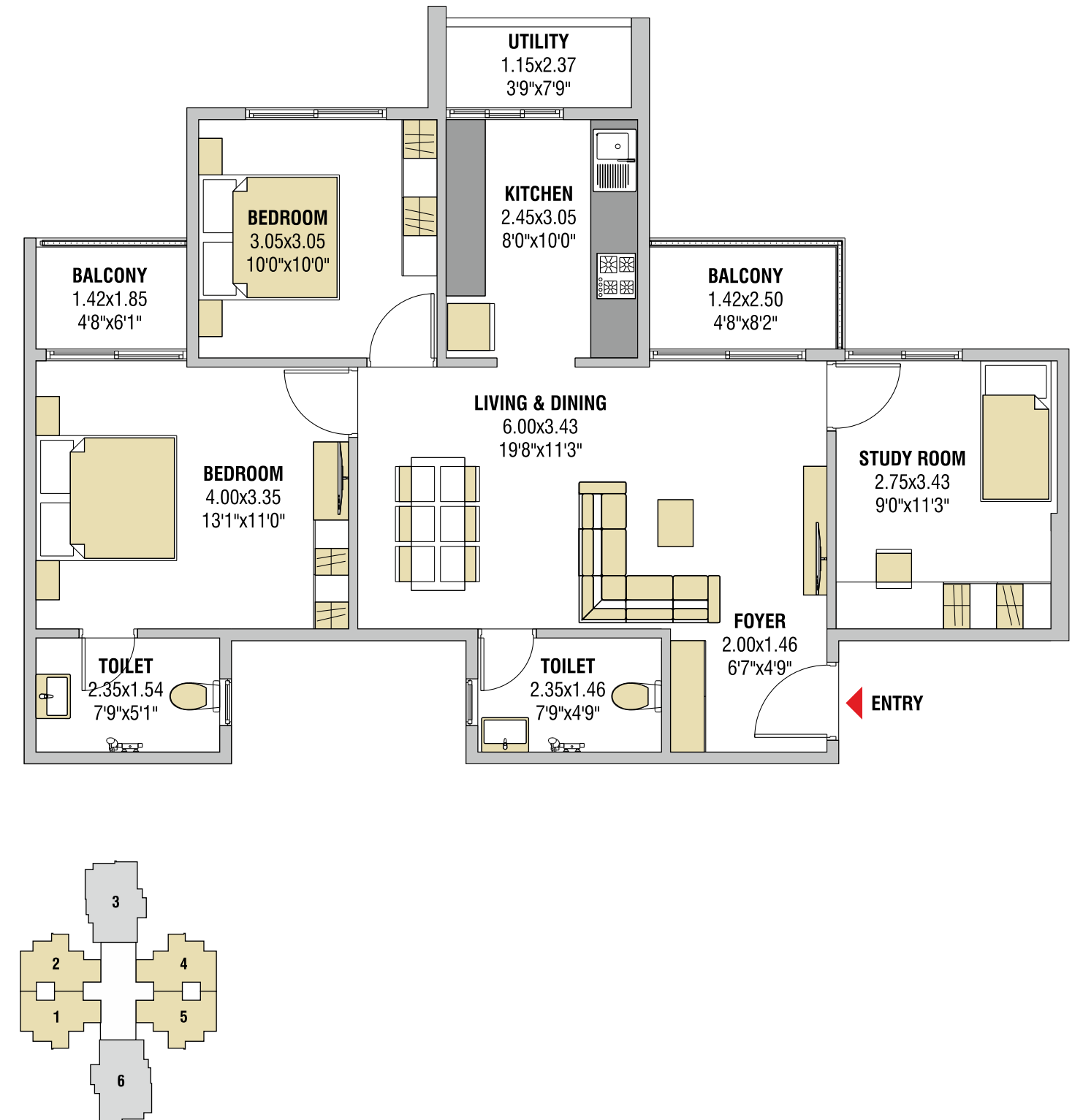
WING-B (2.5 & 3 BHK):  
TYPICAL FLOOR PLAN



WING-B: 3-BHK UNIT FLOOR PLAN  
 FLAT NO. 103-1603, 106-1606



WING-B: 2.5 BHK UNIT FLOOR PLAN  
 FLAT NO. 101-1601, 102-1602, 104-1604, 106-1606



## SPECIFICATIONS

### FLOORING

- GVT Tiles 600x1200 in entire flat
- Anti-skid tiles in balcony, toilets and utility area

### KITCHEN/UTILITY

- Granite platform with stainless steel sink
- Service platform
- Glazed tiles dado upto 2 ft. height above platform

### TOILETS

- Glazed tiles dado up to full height
- Sanitaryware of good quality
- Counter-top wash basin in passage
- Bath Fittings: Jaquar or equivalent
- Electrical points for geyser and exhaust fan

### DOORS

- Main Door: Tata Pravesh Door or equivalent
- Other Doors: Laminated Flush Doors

### WINDOWS

- Powder coated aluminium sliding windows
- French window in hall & bedroom
- Granite window sill

### ELECTRIFICATION

- Modular switches of Legrand or equivalent
- Power points for air conditioners in all the rooms & hall
- Inverter wiring
- Power back-up for lift and common areas in the building
- Provision of point for water purifier and chimney

### PAINTING

- Exterior: Weather shield emulsion paint
- Interior: Putty finish

### LIFTS

- High speed automatic lifts (2 Nos.) with power back-up
- Automatic Rescue Device

### ADD-ONS

- Fire Safety Equipment
- EV Charging Point
- Solar Water Heater in master bathroom

## AMENITIES



CLUB HOUSE

Club House • Swimming Pool • Theatre Room • Gymnasium • Multipurpose Community Hall  
Furnished Guest Rooms • Indoor Games • Garden • Crèche Area • Jogging Track

LEVERAGE GROUP - RECENT PROJECTS



LEVERAGE GREEN VILLAS



LEVERAGE GREENS



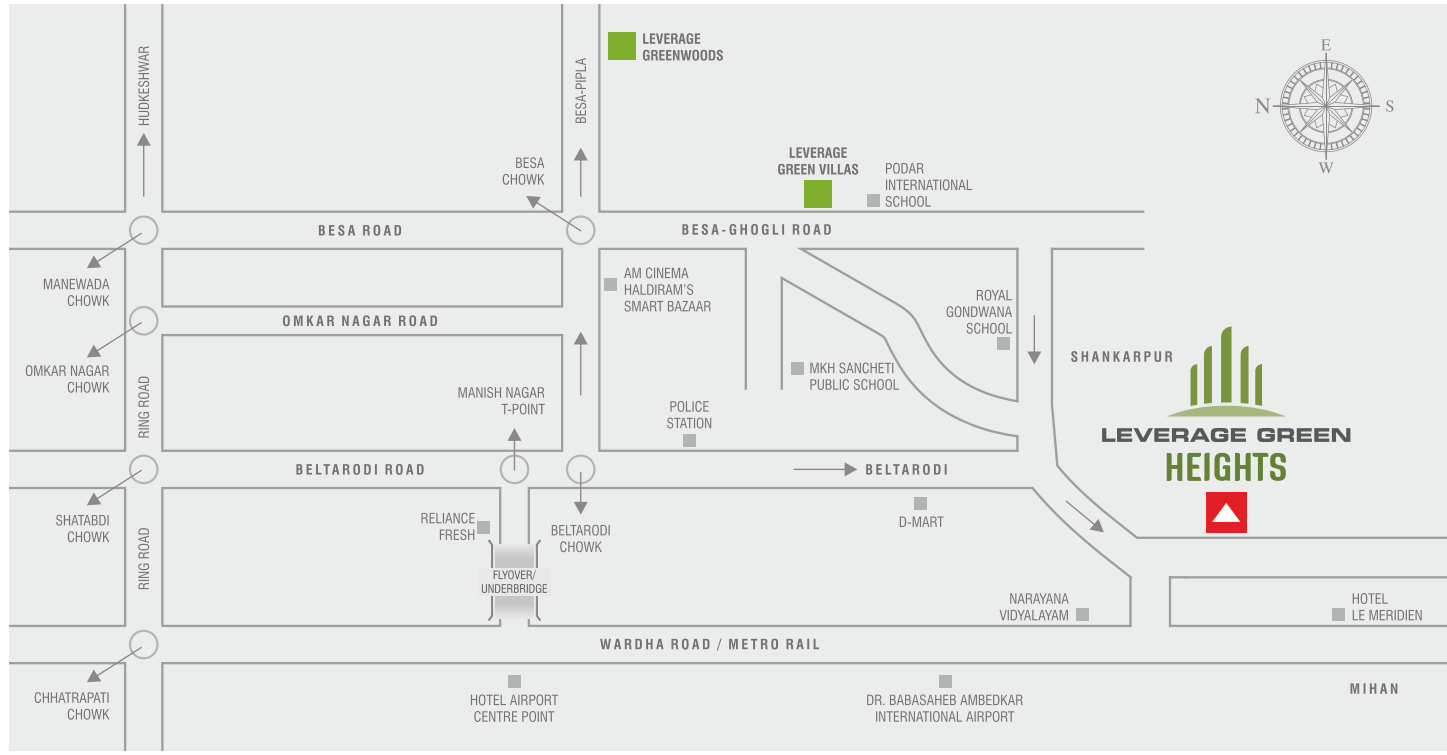
LEVERAGE GREEN PARKS



LEVERAGE GREENWOODS



SWIMMING POOL



### NOTES

---

---

---

---

---

---

---

---

---

---

---

---

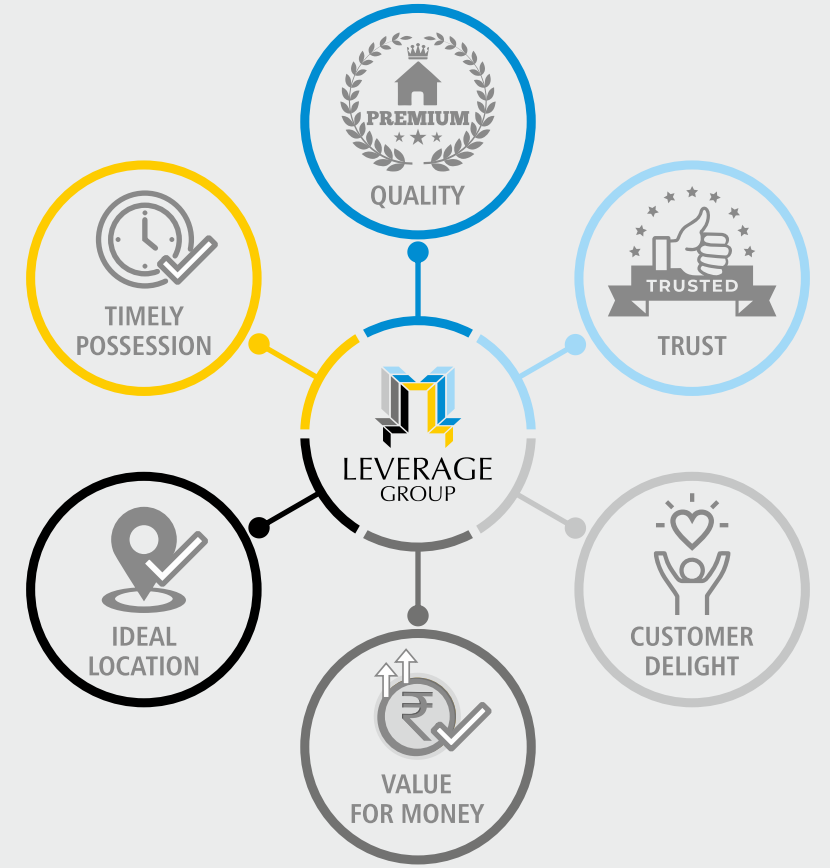
---

---

---

---

THE SPLENDOR OF NIGHT  
AT LEVERAGE GREEN HEIGHTS





Architect

**AR. PARAG KOTWAL**

Ekveera Architects, Nagpur

Structural Consultant

**P.S. PATANKAR**

Patankar Consultants Pvt. Ltd.,  
Nagpur

Legal Consultant

**ADV. ANIL MULCHANDANI**

Nagpur



Follow us on:



FF-1/2/3, Girish Heights, L.I.C. Square,  
Near Bharat Talkies, Sadar, Nagpur-01  
Website: [www.leveragegroup.in](http://www.leveragegroup.in)

CHANNEL PARTNER



4th Floor, Adjacent to Hotel Travotel,  
Wardha Road, Nagpur - 440 015  
Website: [www.bhumeshrealtors.com](http://www.bhumeshrealtors.com)

Note: This brochure is purely a conceptual presentation and not a legal offering. Pictorial depiction and details of buildings, layouts, specifications, designs, dimensions, etc. as shown in this brochure are tentative, indicative and subject to amendment, variation and modification by the Company at its sole discretion and without any notice.

*Don't destruct earth or else it will destruct you. Save earth, save mother.*