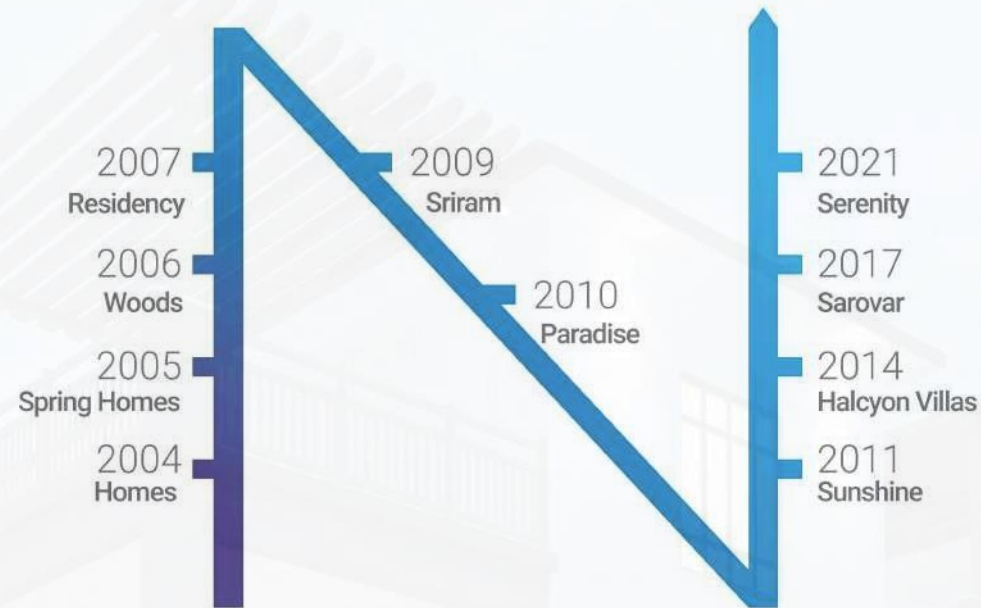


NEERAJA SERENITY





Started in 2002, **Neeraja Developers & Promoters** is highly ambitious to create happy homes worth living in. With a vast experience in the real estate industry, Neeraja Developers have delivered over 365 units across Bangalore.

Close to two decades, Neeraja Developers & Promoters know for its meticulous craftsmanship, thoughtful design and glorious finishing, Neeraja developers raise the bar when it comes to elite living.

With its innovative engineering excellence, ground-breaking innovation and world-class infrastructure, Neeraja Developers & Promoters has become one of the desired choices in the Real Estate Market.

NEERAJA SERENITY



Horamavu, North Bangalore

PRM/KA/RERA/1251/309/PR/190626/002626



Neeraja Serenity, An abode of magnificent Villas in Horamavu, North Bangalore with all Modern Amenities, Innovative engineering excellence and world-class infrastructure required for a contemporary lifestyle.

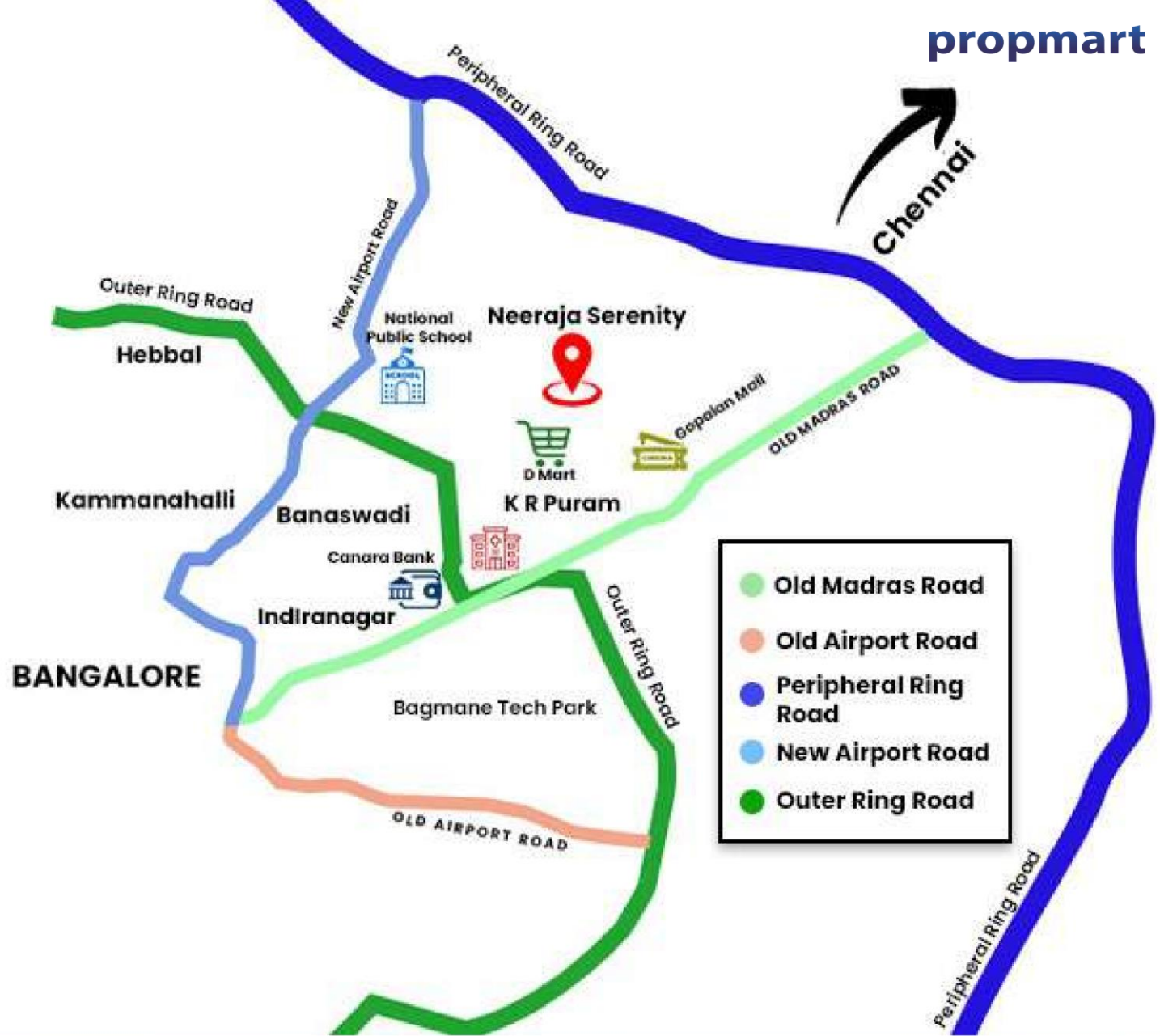
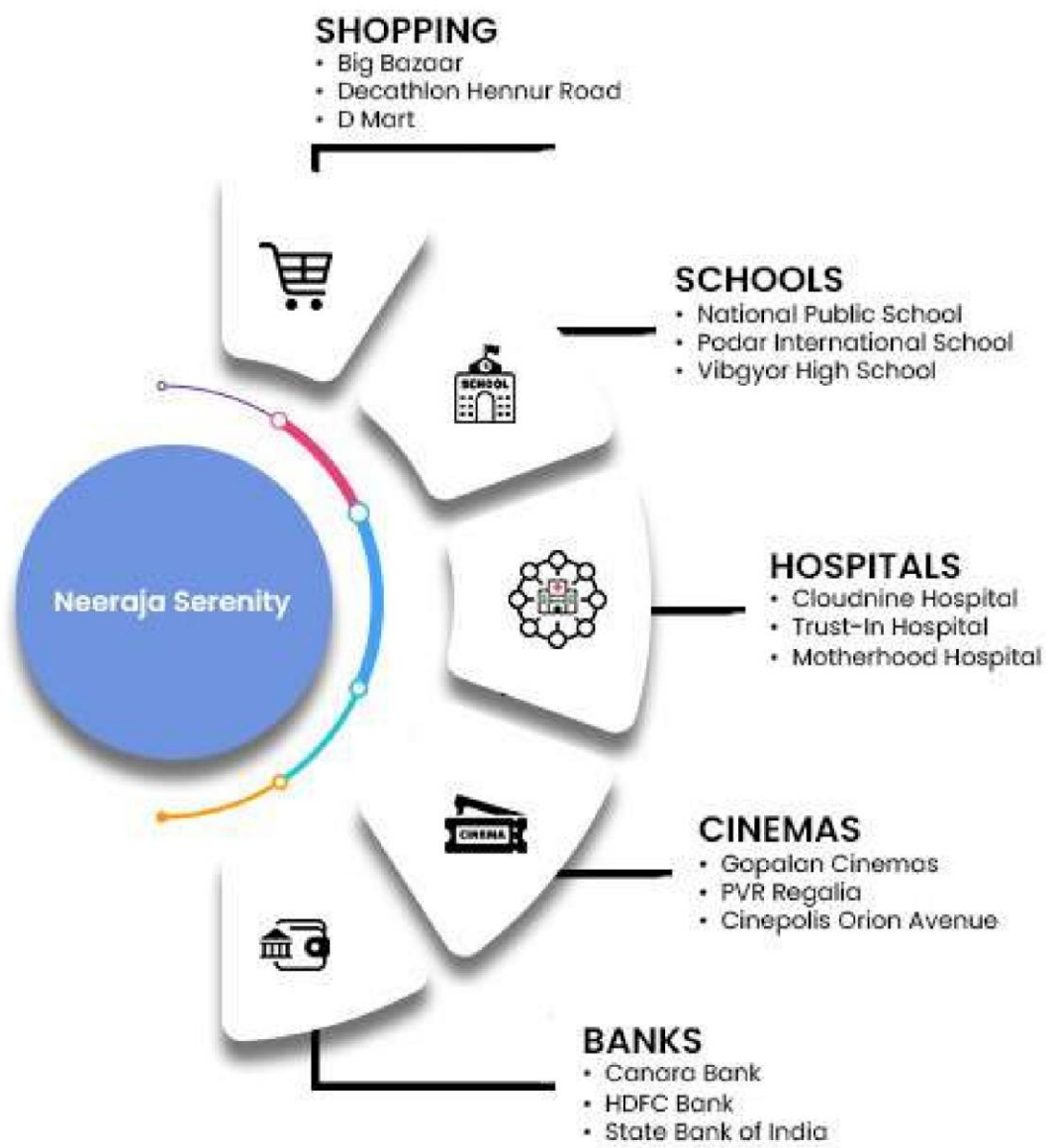
Comprising of 48 meticulously planned 4 Bed Villas enabled with best utilization of space right from stylish flooring to spacious balconies, open kitchen with high-quality fixtures.

Every little detail here gives it an attractive look & feel.

The best option for someone who is looking for a luxurious living at affordable price.

Own a ritzy lifestyle you've always dreamt.





A Promising Location That Connects Dream To Reality

Lifestyle that speaks Elegance

48 meticulously planned luxury villas
Spread over 3.17 acres of land



FLOOR PLAN



Ground Floor

DIMENSION

| | |
|-----------------|----------------|
| Living Dining | 21'10" x 21'5" |
| Kitchen | 12'10" x 13'8" |
| Bedroom 1 | 15'6" x 15'1" |
| Washroom | 9'0" x 5'6" |

FLOOR PLAN



First Floor

DIMENSION

| | |
|-------------|---------------|
| Living Room | 15'5" x 13'8" |
| Bedroom 2 | 14'4" x 15'1" |
| Washroom | 9'0" x 5'6" |
| Bedroom 3 | 14'4" x 15'1" |
| Washroom | 9'0" x 5'6" |
| Balcony | 10'0" x 14'2" |

FLOOR PLAN



Second Floor

DIMENSION

| | |
|-----------|---------------|
| Laundry | 8'6" x 10'2" |
| Bedroom 4 | 15'6" x 15'1" |
| Washroom | 9'0" x 5'6" |



AMPLE CAR PARKING

Engineering Excellence

Well Maintained Independent & exclusive parking space with private access to **lobby**

MODERN AMENITIES



Badminton **Court**



Fishing **Pond**



Kids **Play Area**



Basketball **Court**



Out & Indoor **GYM**



Smimming **Pool**



Car **Wash Area**



Banquet & **Lounge**

PROJECT SPECIFICATION



Structure

RCC framed structure with RCC sheer walls / Porotherm Clay Bricks for all the walls

Kitchen

Flooring vitrified tiles and dado above the granite counters are of ceramic tile. Double bowl sink (38 inches by 19 inches) in the kitchen with single lever spout.

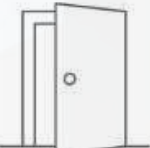


Windows

Teak Wood Frames and Shutters with Aluminium mesh
Staircase railings in stainless steel.
Balcony railings in MS.
Pergola in MS

Electrical Fittings

Concealed wiring with PVC insulated copper wires and modular switches from panasonic



Doors

MAIN DOOR
7 feet high opening with Teak Wood frame and Panelled Doors

INTERNAL & TOILET DOORS
All bedroom doors are 7 feet height and toilet doors 7 feet height with Teak Wood frames, with Panelled Doors

DC Backup

For all common areas
100% back-up is provided.
In every row house,
back-up will be provided
for lighting circuit only.



Flooring & Wall Cladding

LIVING • DINING • KITCHEN • INTERNAL STAIRCASE
Engineered Stone in the Foyer

BEDROOMS: Engineered laminated Wooden flooring

BATHROOMS: Anti-Skid Tiles on the floor and Ceramic for the walls up to 8 Ft

Paint

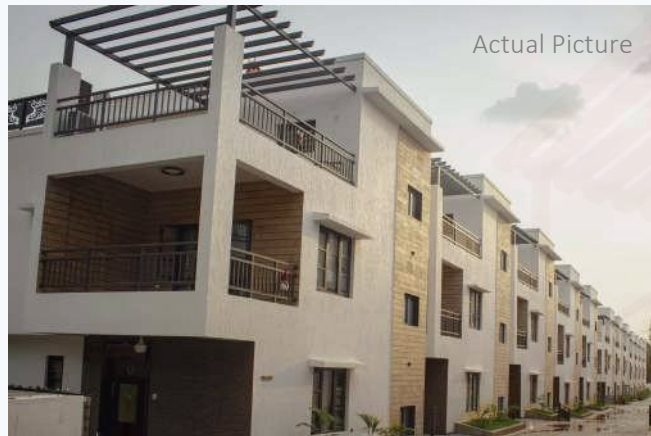
INTERNAL WALLS
Premium Emulsion paint from Asian Paint or Equivalent

EXTERNAL WALLS
Waterproof cement based paints (ACE) enamel paint for doors, windows and natural polish for main door and Bedroom Doors.



EXTERIOR DESIGN

SHOT AT SITE



INTERIOR DESIGN



EXCLUSIVELY MARKETED BY PROPMART TECHNOLOGIES LTD

propmart

PROPMART TECHNOLOGIES LTD

CALL: +91 74066 44491/ +91 81473 45762

www.propmart.com

PRM/KA/RERA/1251/310/AG/170824/000235

***T&C Apply**