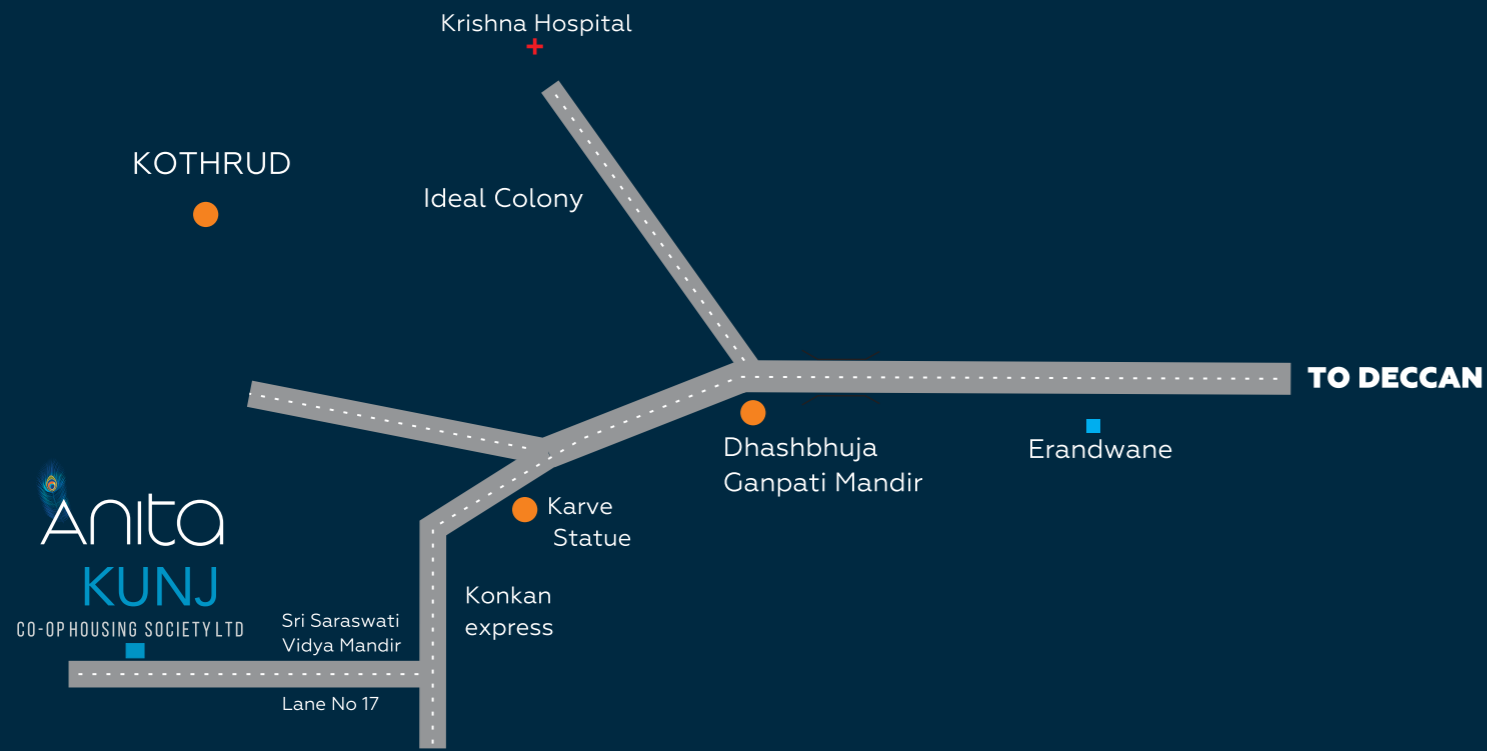


LOCATION



CREDITS

ARCHITECT

Ar.Viinod Khanzode
VIINOD and ASSOCIATES

RCC CONSULTANT

Sunil Mutalik &
Associates

LEGAL ADVISOR

Adv. Dharmendra
Pardeshi

A PROJECT BY



CONTACT

+91 91 12 150 140
+91 99 22 150 140

SITE ADDRESS

"ANITA KUNJ CO_OP HOUSING SOCIETY LTD , CTS No. 1763A , S. No. 30A Hissa No. 3
Plot No. 1 , Lane No. 10, Dahanukar ColonyKothrud, Pune 411038 Pune - 411057.

BRANCH OFFICE

Flat No. 1 Samarth Prasad, S.No. 30/2/5 Gulvani Maharaj Road, Near Mehendale Garage ,
Ganeshnagar Mandal , Erandwane Pune 411004.

REGISTERED OFFICE ADDRESS

568 Narayan Peth , Kelkar Road , Pune - 411030.

The brochure is purely conceptual and not a legal offering. No. of floor may be revised in light of amendment in development control rules.
Developers reserve right to amend the layout, plans, elevations, specifications and amenities as and when required.

INFINITE-9767160170

Anita KUNJ

CO-OP HOUSING SOCIETY LTD

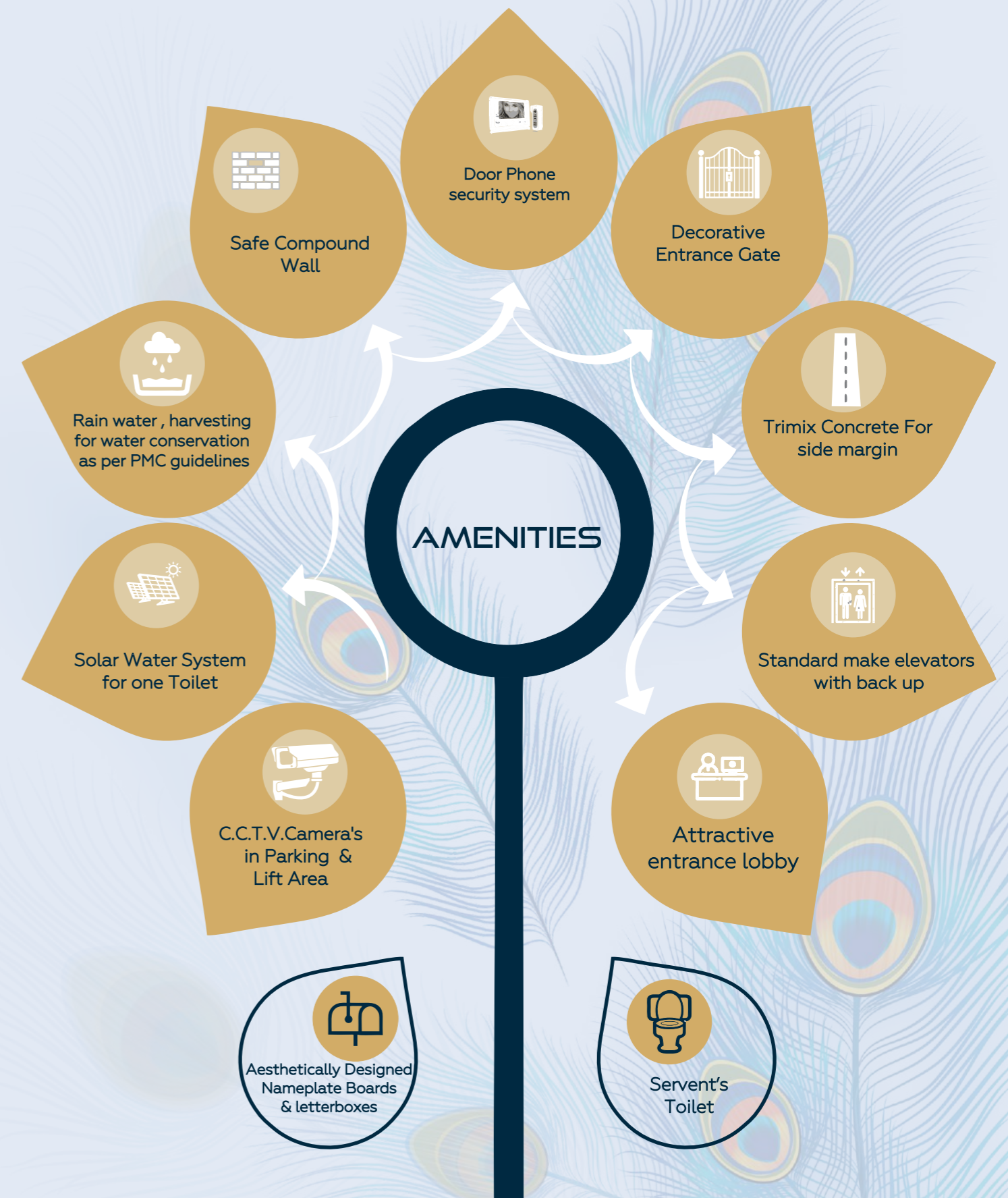
LIVE A BRIGHTER LIFE

2 & 3 BHK LUXURIOUS HOMES @ KOTHRUD


Welcome to "Anita kunj",
Where life Blossoms in a
Prosperous lifestyle...



Anita KUNJ
CO-OP HOUSING SOCIETY LTD
LIVE A BRIGHTER LIFE
2 & 3 BHK LUXURIOUS HOMES @ KOTHRUD



Discover the new Horizon
In living...!!

Anita
KUNJ
CO-OP HOUSING SOCIETY LTD
LIVE A BRIGHTER LIFE
2 & 3 BHK LUXURIOUS HOMES @ KOTHRUD

*We know the importance of
Every Sq ft in your life..*



STRUCTURAL

- Earthquake Resistant R.C.C frame structure
- 5" Thick ACC block for external and Internal Walls.
- Sand faced plaster for external walls.
- Gypsum finish to all Internal walls.

FLOORING AND WALL TILES

- 2' X 2' Premium quality vitrified tiles for flooring.
- 12"x18" Premium quality wall tiles for bathrooms/toilets upto lintel level.
- 12"x12" Antiskid tiles for bathrooms,terraces and balconies.
- Antiskid tiles for parking Area

KITCHEN

- Granite kitchen platform with stailness steel sink of NIRALI make/any equivalent make.
- Designer Tiles dado above kitchen platform upto lintel level.
- Provision for exhaust fan.
- Enough power points for water purifier / fridge /washing machine.

BATHROOMS / TOILETS

- Concealed plumbing in CPVC/UPVC of standard / any equivalent make.
- Provision for boiler in Each toilets.

PAINTING

- External : Apex paint / any equivalent make.
- Internal : OBD paint of standard make .

DOORS AND WINDOWS

- 35 mm Thick laminated flush door.
- Plywood laminated door frames for main and bedroom door.
- Granite / marble frames for all Toilets
- Granite /marble sill for all windows.
- 3 Track Powder coated aluminium sliding windows with Mosquito net.
- Provision of M.S Grills for all windows for safety purpose .

ELECTRIFICATION

- Concealed fire resisting copper wiring of POLYCAB/any equivalent make.
- Adequate electrical points with premium moduler switches of Roma/ any equivalent make.
- Provision for inverter.
- Provision for TV,telephone and internet cable in living room.
- Provision of AC point for Master bedroom.

OUR COMPLETED PROJECTS



"KAPIL SANKALP"
SADHASHIV PETH, PUNE (35,000 SQ.FT)



"LOKMANYA CO OPERATIVE SOCIETY"
S.B ROAD, PUNE (12,000 SQ.FT)

**Anita
KUNJ**
CO-OP HOUSING SOCIETY LTD
LIVE A BRIGHTER LIFE
2 & 3 BHK LUXURIOUS HOMES @ KOTHRUD