

Quality Focus

At SVML we believe in developing and Constructing Aesthetically Designed, Economically viable Residential and Commercial Complexes of International Quality. We believe our buildings should reflect engineering excellence with a view to provide complete customer satisfaction. The Quality of our Products / Services should result in complete value for clients, as well as foster continuous demand for our Products.

Our Commitment

In a fast changing world, opportunity comes in different shapes and sizes. SVML is committed to constantly improving, refining skill and capabilities to make the most of every single one of them. Each SVML projects as you will see is a testimony to our customer commitment, on timely delivery and superior quality. From apartments to condominiums to integrated townships, office complexes and industrial infrastructure; SVML has proven capability to successfully take on challenging projects.

Location Map

A residential building complex with unparallel features
is sure to sweep you off your feet.



Comfortable & Luxurious Living with planned and well executed Features Facilities and Amenities



Corporate Office:
SV Megastructures Limited
B-170, Sector - 31, Opp. Senior Mall,
Noida, U.P. - 201301
For Enquiries : [Redacted] 9569222230, 7982045005, 9999792429

Site Office:
Rama Heights
Near GD Goenka Public School, Raj Nagar Ext.
Ghaziabad, (U.P.)

RAMA HEIGHTS
2/3 Bedroom Premium Apartments
Raj Nagar Extn., Ghaziabad

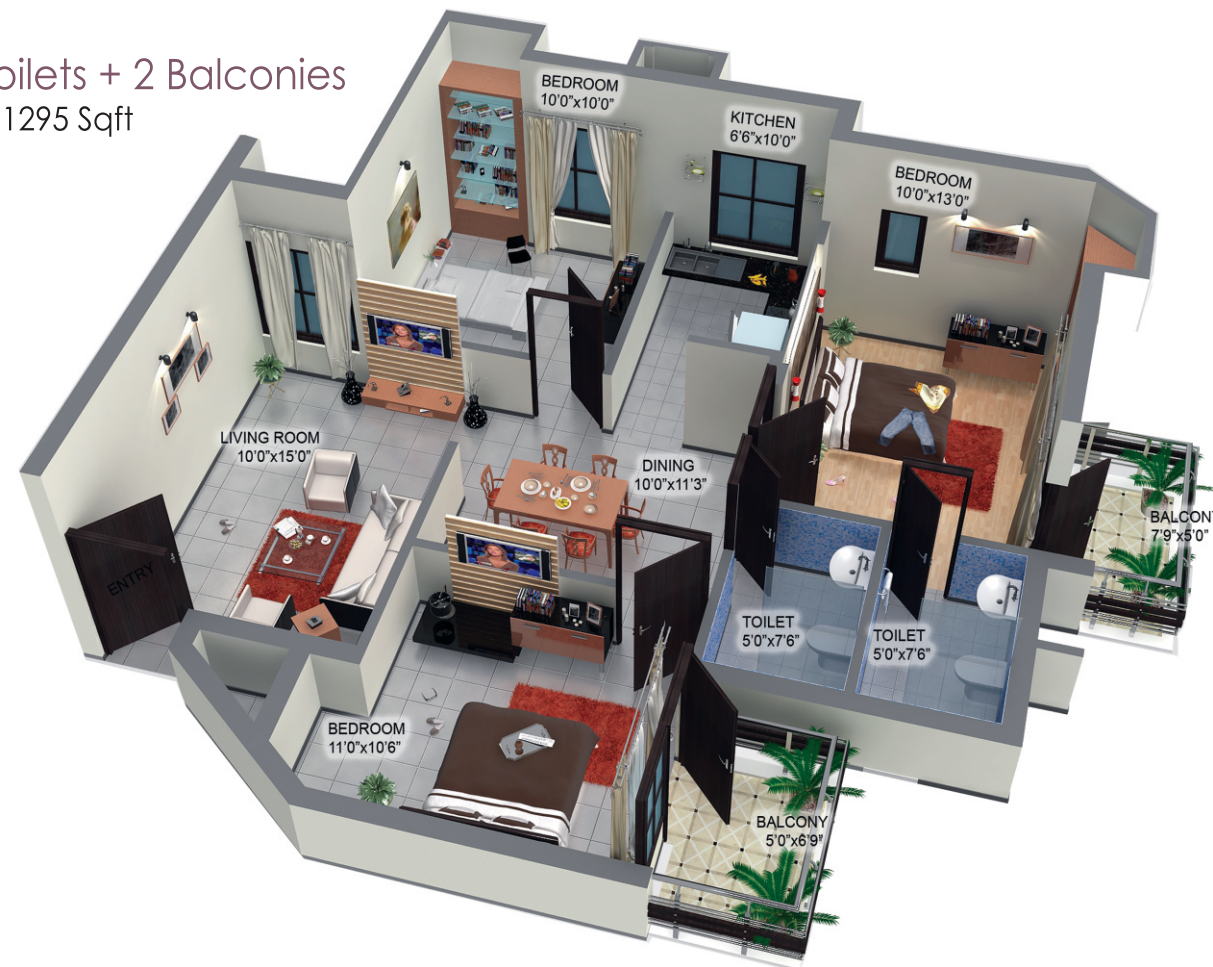


Floor Plan

Block A

3BHK + 2 Toilets + 2 Balconies
Super Area : 1295 Sqft

A



SPECIFICATIONS

STRUCTURE

Earthquake Resistance RCC Framed.

BEDROOM

FLOOR
Vitrified tiles / laminated wooden flooring in master bedroom

WALLS
Designer / Texture paint on one wall
Wet area glass partition

LIVING / DINING / LOBBY PASSAGE

FLOOR
Vitrified tiles / equivalent

CEILING
Designer POP.

KITCHEN

Designer ceramic tiles with border upto 2 Ft. above counter

FLOOR
Combination of anti skid ceramic tiles / vitrified tiles

COUNTERS
Granite working platform

FITTINGS / FIXTURES
CP fitting, stainless steel sink

TOILET

WALLS
Designer ceramic tiles

FLOOR
Combination of anti skid ceramic tiles / vitrified tiles
ISI fitting, granite counter, standard chinaware fixtures & fittings for geyser water supply.

LIFT LOBBY

FLOOR
Combination of different colors of marble / stone in patterns

WALLS
Granite tiles cladding upto 3 Ft. & texture paint above

ELECTRICAL
Modular Switches
Designers Fans
24 Hrs. power backup

DOORS

ENTRANCE DOORS
Polished skin door

INTERNAL DOORS
Hardwood frame with flush door shutter.

WINDOWS
Powder coated aluminium glazing

BALCONY

FLOOR
Anti skid ceramic tiles / terrazzo tiles

WALL & CEILING
OBD paint



For Your Convenience and Leisure...!!!

- | Plan approved by G.D.A.
- | Metro Connectivity to Hindon.
- | Free - Hold Land.
- | Fire Fighting Alarm System.
- | Fast Lifts in all Buildings.
- | Pollution Free Environment.
- | Housing Loan Facility Available.
- | Recreational facilities like gym.





Floor Plan

Block A

3BHK + 2 Toilets +
2 Balconies
Super Area : 1295 Sqft

A



Floor Plan

Block B

2BHK + 2 Toilets + 2 Balconies
Super Area : 1095 Sqft

B

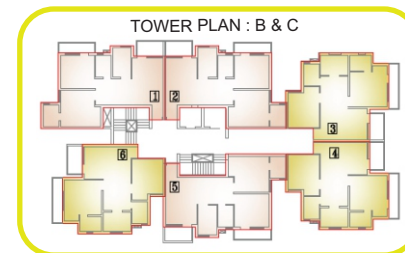


Floor Plan

Block B

2BHK + 2 Toilets + 2 Balconies
Super Area : 1095 Sqft

C

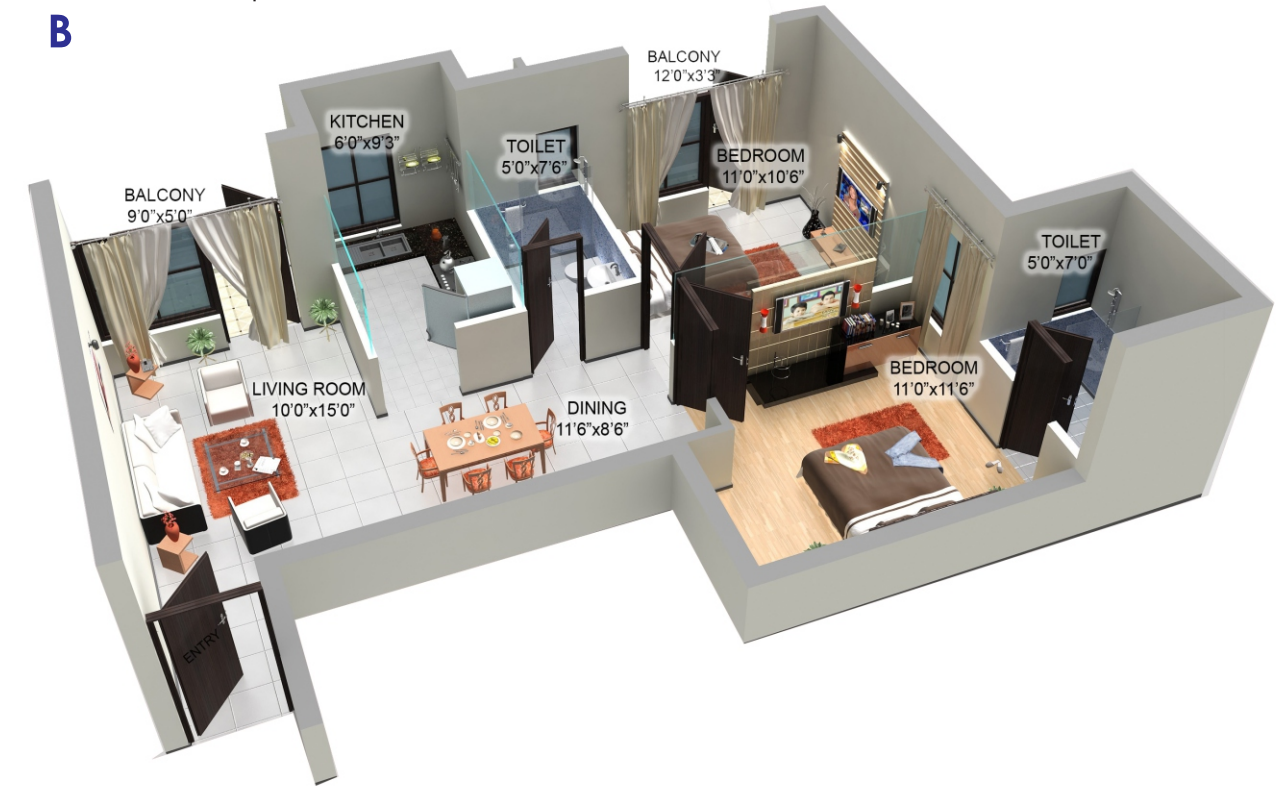


Floor Plan

Block B

2BHK + 2 Toilets + 2 Balconies
Super Area : 1095 Sqft

B



FEATURES

“Necessity is the new name of luxury.”

- ☞ Elegant apartments with all amenities in close vicinity Club house.
- ☞ Separate get together area.
- ☞ Adequate cross ventilation and ideal natural light in every apartment
- ☞ More than 60% green spaces with amazing landscapes.
- ☞ Modern high speed lifts.
- ☞ Round the clock security system with video-phone facility to each apartment.
- ☞ Ample parking space.
- ☞ Hi-tech security & Fire fighting systems.
- ☞ Power backup & round the clock water supply.
- ☞ Multipurpose Hall, Temple & Park (Kids playing zone).

Floor Plan

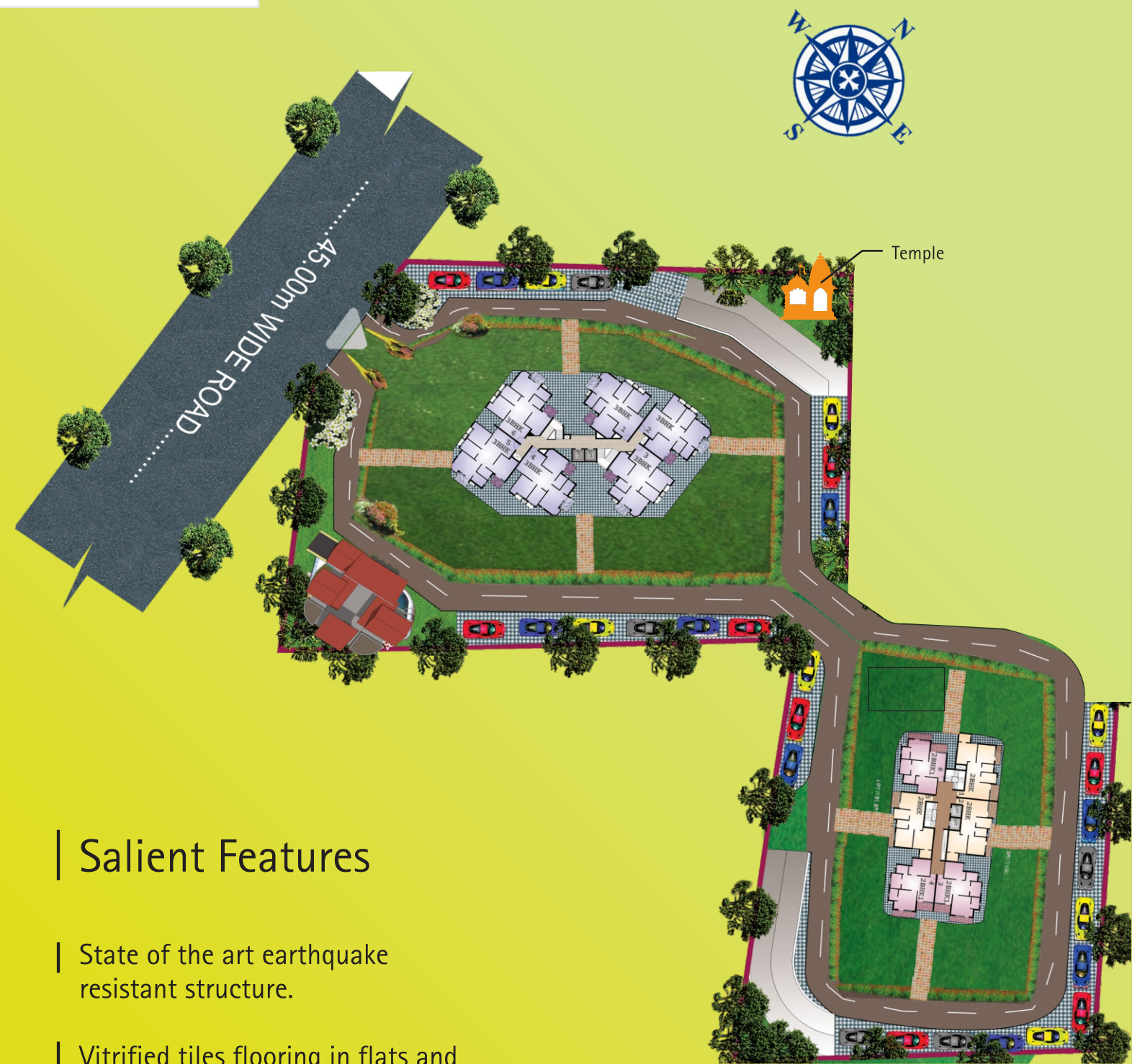
Block B

2BHK + 2 Toilets + 2 Balconies
Super Area : 1095 Sqft

C



Layout Plan



Salient Features

- | State of the art earthquake resistant structure.
- | Vitrified tiles flooring in flats and granite border & vitrified flooring in the lobby.
- | Polypropylene pipes for hot water supply.
- | Superior exterior finish with extensive use of rough, textured weather proof paint and a combination of stone grade white.

