



Codename

SouLuxe

ADDING SOUL TO LUXURY

2, 3 & 4 BHK SOULFUL RESIDENCES

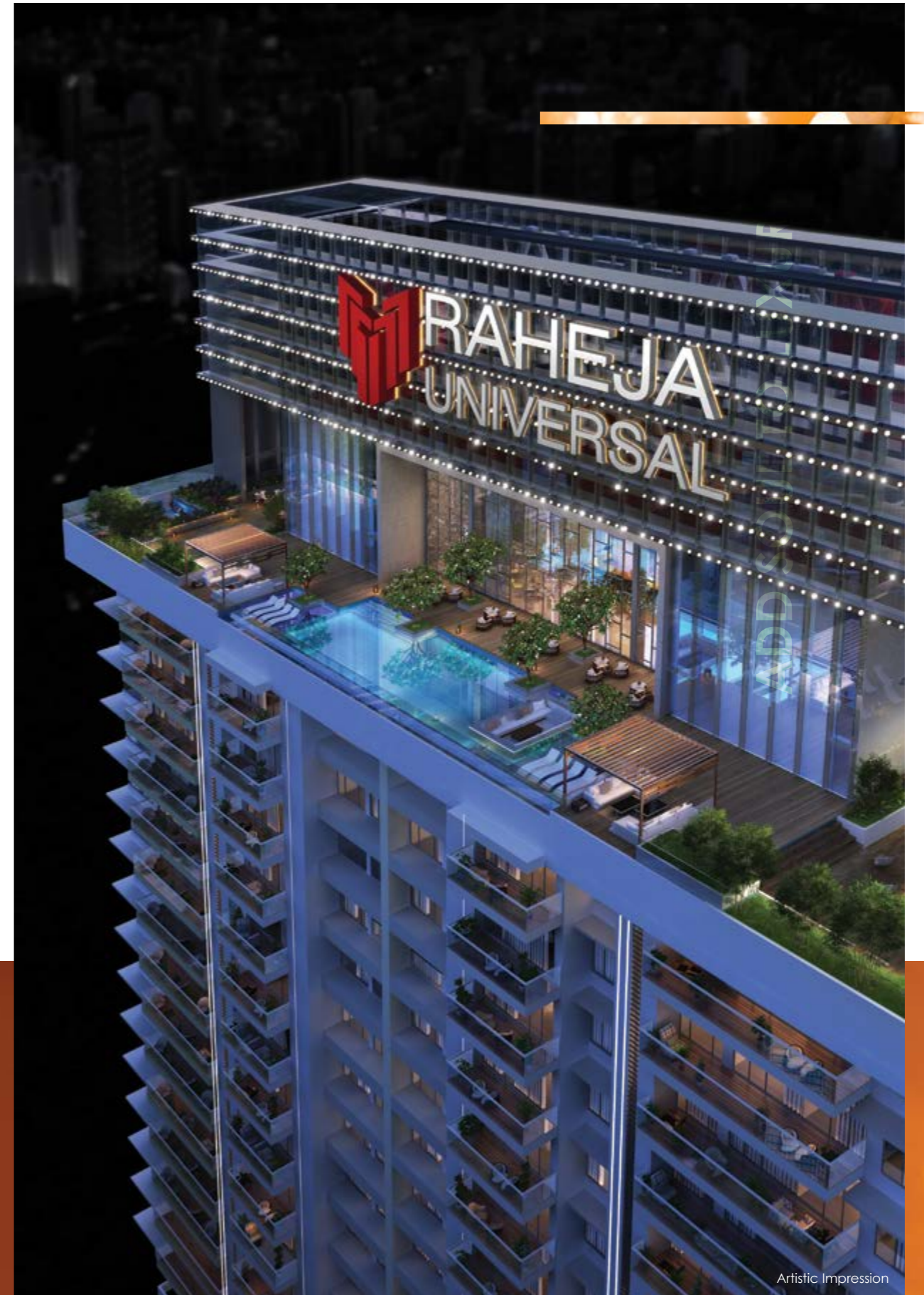
AT RAHEJA DISTRICT, JUINAGAR

A Legacy
**OF FOUR DECADES
 AND FOREVER**

Established over 40 years ago with the aim of transforming the Mumbai skyline, Raheja Universal, is one of the leading and trusted real estate brands.

Recognised as a premium real estate development company, Raheja Universal is defining luxury living in its truest sense.

- 40+** YEARS OF EXCELLENCE
- 50+** PROJECTS DELIVERED
- 08+** MILLION SQ.FT. DEVELOPED
- 10K+** HAPPY CUSTOMERS



Artistic Impression

A LEGACY THAT SPANS OVER 8 MILLION SQ.FT.

Add Soul

TO AN ADDRESS OF GRANDEUR

Juinagar Railway Station	2.0 km	05 min
CBD Belapur	4.3 km	10 min
Vashi	4.5 km	10 min
Sion - Panvel Highway	6.1 km	13 min
Thane - Belapur Road	7.7 km	15 min
Eastern Suburbs	23.1 km	35 min
BKC	22.2 km	45 min
South Mumbai	31.1 km	50 min
Western Suburbs	35.8 km	55 min

LOCATION AT A GLANCE

EDUCATION

Apeejay School	2.3 km
DY Patil University	2.4 km
Western College	2.6 km
Ryan International School	2.7 km

EXPERIENTIAL

DY Patil Stadium	1.9 km
Inorbit Mall	3.9 km
IKEA	4.0 km
Seawoods Grand Central Mall	4.3 km
Navi Mumbai Marina	6.0 km

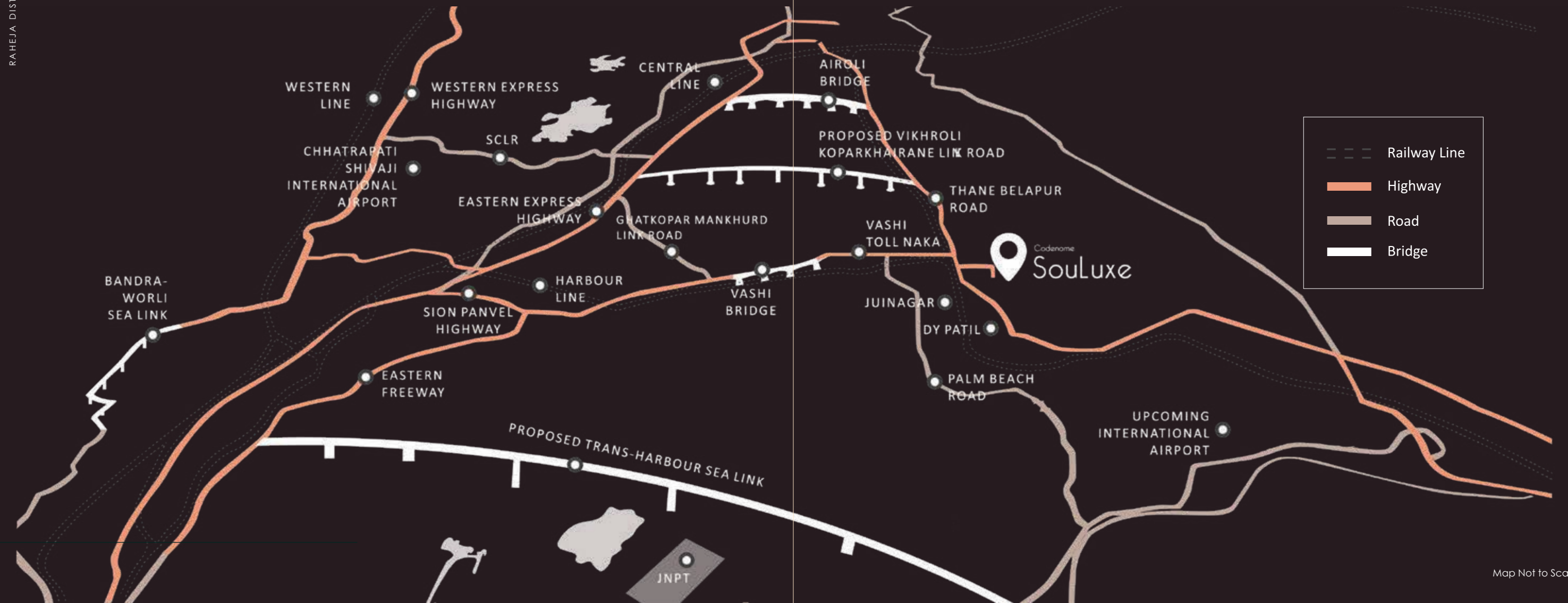
HEALTHCARE

DY Patil Hospital	2.4 km
Apollo Hospital	4.1 km
MGM New Bombay Hospital	4.9 km
Reliance Hospital	5.7 km
Fortis Hospital, Vashi	6.0 km

TRANSPORT

Eastern Freeway	14.3 km
Santacruz Chembur Link Road	15.3 km
Proposed Trans - Harbour Sea Link	16 km
Upcoming Intl. Airport	20 km
Chhatrapati Intl. Airport	23.9 km
JNPT Port	29 km

RAHEJA DISTRICT | 03 |



RAHEJA DISTRICT | 04 |

RAHEJA DISTRICT

Live Where

**HAPPINESS IS
A PROMISE**

A well defined mixed use development with a soothing sense of an upgraded blissful living. From striking commercial spaces, to homes redefining luxury and a lifestyle matching your class & status.

This uniquely designed 'IITT' township has a captivating appeal stapled with not just luxury but Luxury with Soul. Experience the oneness of living at a place that has it all.



RESIDENTIAL



COMMERCIAL



RETAIL



LEISURE



IT



Stock Image

ADD SOUL TO YOUR INNER PURSUIT



After embodying the essence of opulence, by launching Solaris - 1, Raheja Universal is now coming up with a two-tower addition to the residential space of the Raheja District, codename SouLuxe is where we add soul to luxury. A variety of 2, 3 & 4 BHK soulful apartments with decks en-suited to living rooms.

A living experience that is parallel to no other with eco-decks, clubhouse, landscaped amenities, grand entrance lobbies, stilted amenities, and many more conveniences.

Codename

SouLuxe

2, 3 & 4 BHK SOULFUL RESIDENCES

AT RAHEJA DISTRICT, JUINAGAR

ADD SOUL TO LUXURY

Add Soul TO YOUR INNER PURSUIT

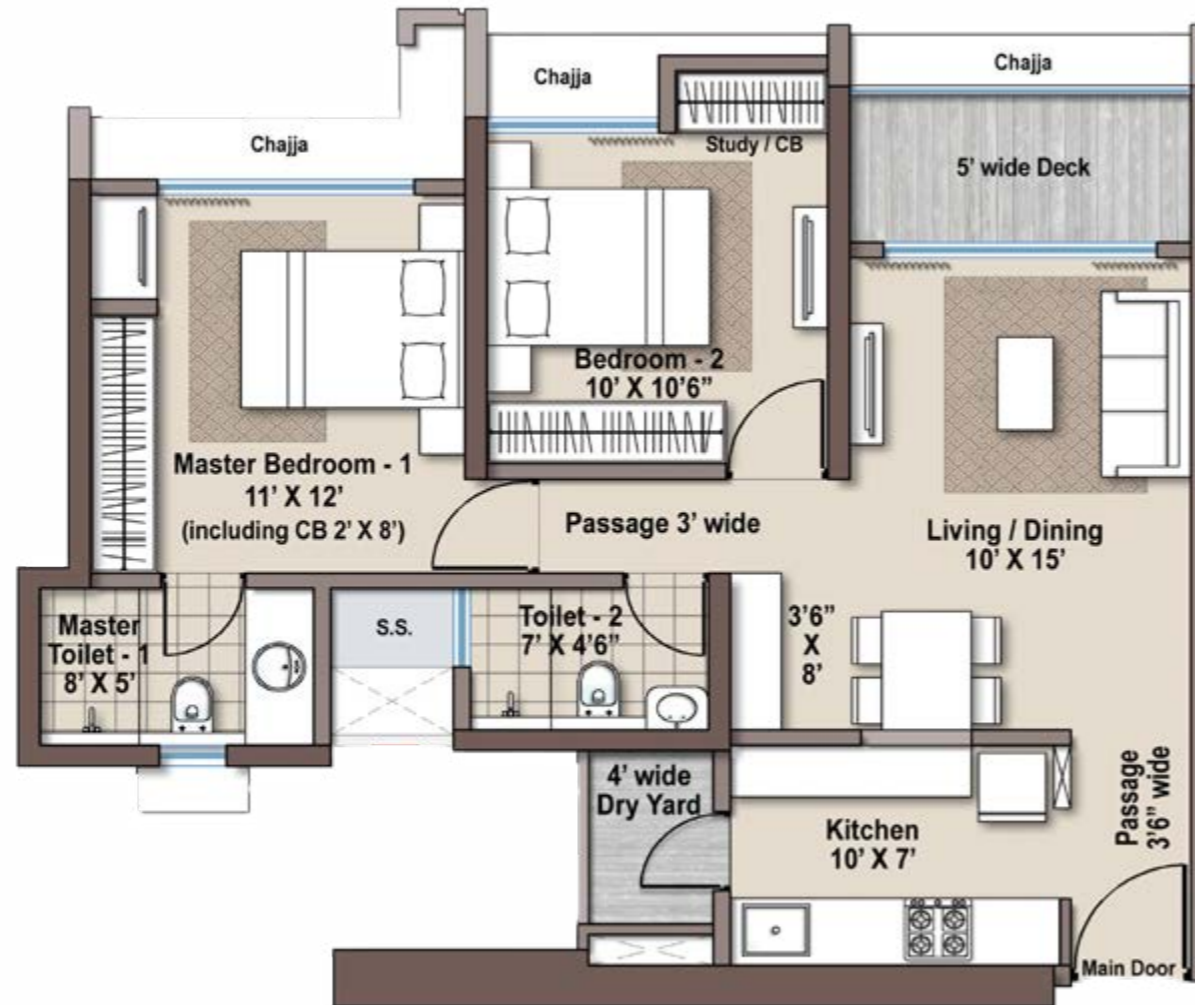
AMENITIES FOR YOUR EVERY PRICELESS MEMORY

- | | |
|-------------------------------------|--|
| 1. Zen Garden | 16. Toddler's Play Area |
| 2. Party Plaza | 17. Gazebo |
| 3. Interaction Zone | 18. Multipurpose Lawn |
| 4. Readers Nook Multiple Lawn | 19. Board Games Plaza |
| 5. Meditation Zone with Yoga Lawn | 20. Indoor Games |
| 6. Feature Paved Area | 21. Adventure Park / Teenager Garden |
| 7. Kids Play Area | 22. Amphitheatre With Performance Deck |
| 8. Senior Citizen Area with Pergola | 23. Party Deck |
| 9. Outdoor Gym | 24. Business Centre |
| 10. Jogging Track | 25. Tennis Court |
| 11. Reflexology Pathway | 26. Half Basketball Court |
| 12. Clubhouse | 27. Net Cricket |
| 13. Swimming Pool and Kid's Pool | 28. Palm Court with Seating |
| 14. Pool Deck | 29. Music Garden |
| 15. Party Lawn | 30. Multipurpose Hall |



Unit Plan

2 BHK - ELEGANTE



RCA = 637 SQ.FT.
 DECK/DRY YARD AREA = 67 SQ.FT.
 C.B. AREA = 24 SQ.FT.
 TOTAL AREA = 728 SQ.FT.

Unit Plan

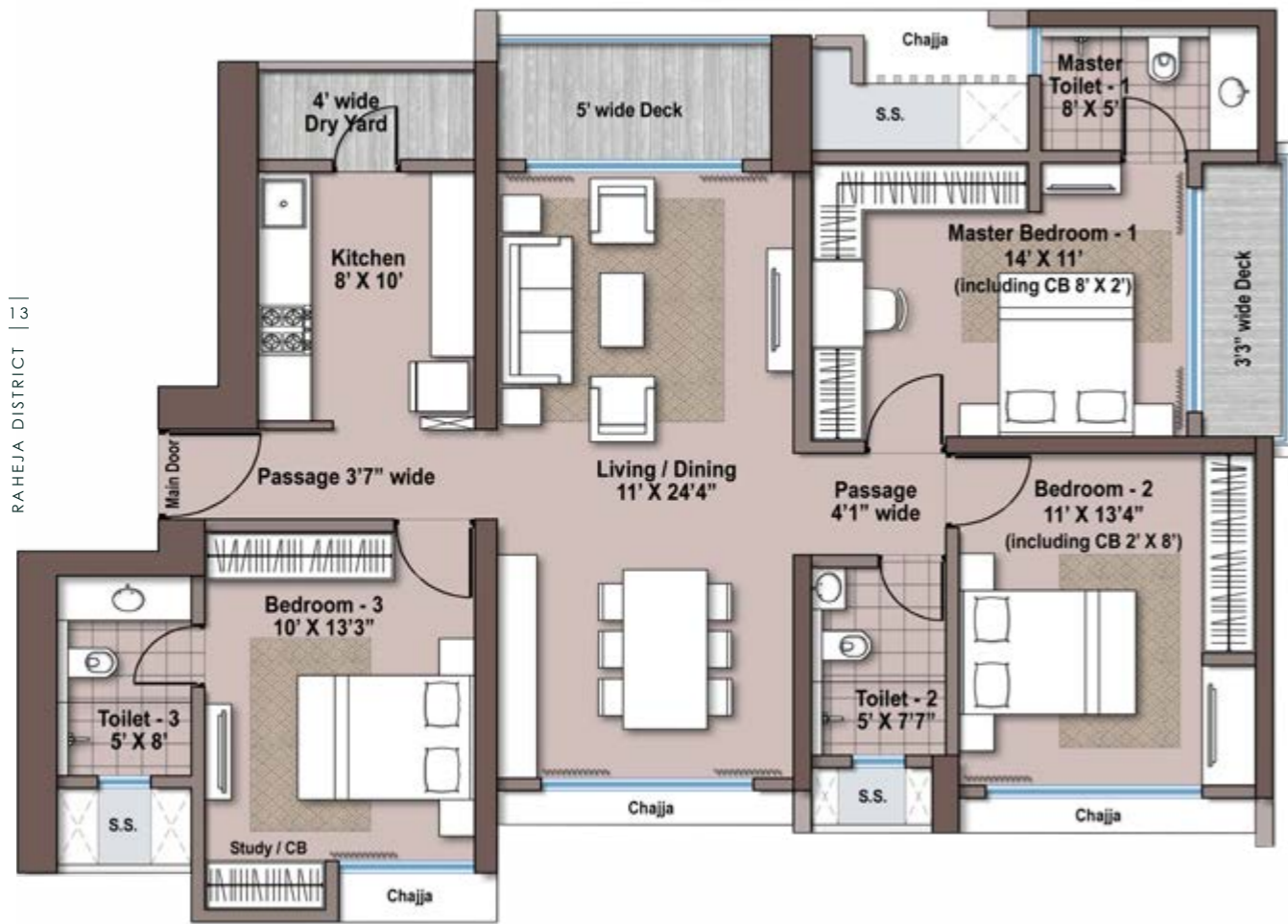
2 BHK - EMPRESASSA



RCA = 660 SQ.FT.
 DECK/DRY YARD AREA = 82 SQ.FT.
 C.B. AREA = 24 SQ.FT.
 TOTAL AREA = 766 SQ.FT.

Unit Plan

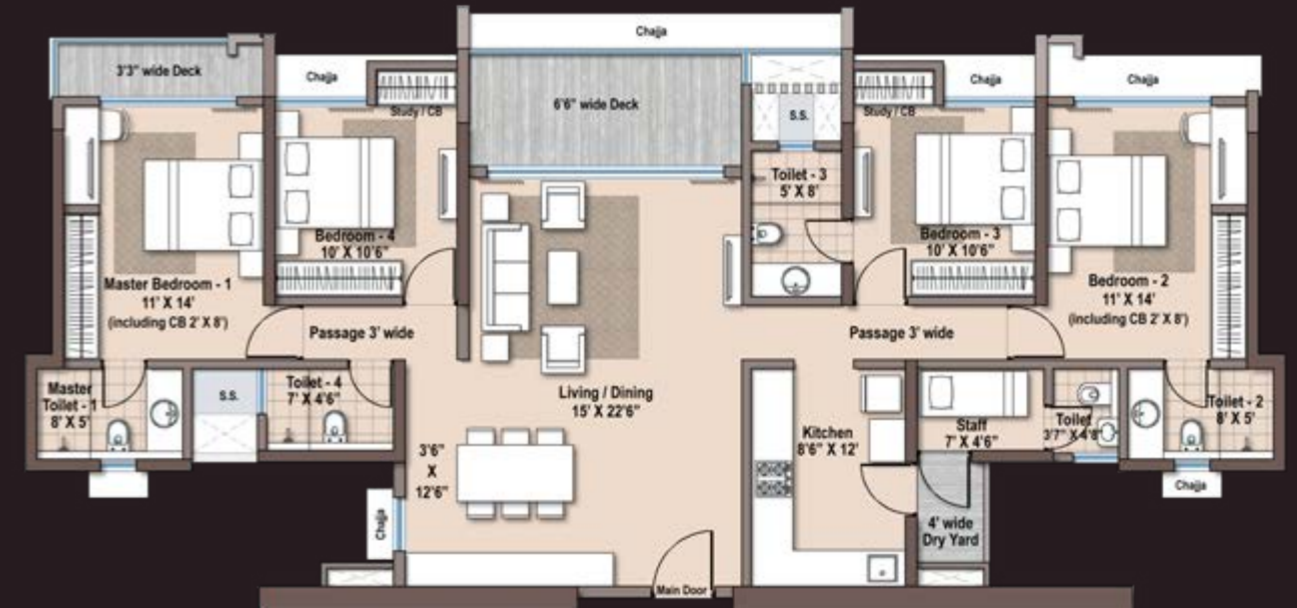
3 BHK - SUPREMO



RCA = 1012 SQ.FT.
 DECK/DRY YARD AREA = 109 SQ.FT.
 C.B. AREA = 40 SQ.FT.
 TOTAL AREA = 1161 SQ.FT.

Unit Plan

4 BHK - SKYPLEX



RCA = 1353 SQ.FT.
 DECK/DRY YARD AREA = 147 SQ.FT.
 C.B. AREA = 49 SQ.FT.
 TOTAL AREA = 1549 SQ.FT.



CORPORATE ADDRESS: RAHEJA UNIVERSAL PVT. LTD. RAHEJA CENTRE-POINT, 294, C.S.T. ROAD KALINA, SANTACRUZ (E) MUMBAI-400 098.

SITE ADDRESS: RAHEJA SOLARIS SALES OFFICE, RAHEJA DISTRICT, OPP. JUINAGAR STATION, JUINAGAR, NAVI MUMBAI, 400705

Raheja Solaris-2 MahaRERA Registration No. P51700046184. ANAROCK Property Consultants Pvt. Ltd. MahaRERA Registration No. A51900000108 available at maharera.mahaonline.gov.in

Strategic Sales Alliance
ANAROCK
RESIDENTIAL

Disclaimer: The specifications and other details herein are only indicative and the Developer/Lessee reserves the right to change any or all of these at its / their sole discretion subject to the approval of the authorities as required by the developer in the interest of continuing improvement without prior notice or obligation. All maps, images and views are indicative of architect's impressions and may not be to scale and are for illustrative purposes only. Proposed infrastructure are presently proposed by the government of Maharashtra and the developer shall not be liable for any change in the policy, rule or notification of the Government of Maharashtra as regards the same. This document is purely conceptual and does not constitute an offer and/or a contract of any type between the Developer/Lessee & the recipients and acquisition in this project shall strictly be governed by the terms and conditions of the Agreement to be executed between the parties. This is for selected circulation and cannot be recirculated.
Note: The Project Raheja Solaris is mortgaged with HDFC Limited. Raheja Universal Pvt. Ltd. would obtain/provide No Objection Certificate from HDFC Limited for transfer of flats/units.

Designed by ACA