



Seawoods
—Residences—

📍 NAVI MUMBAI



One & Only

Seawoods Residences is a landmark project by L&T, built on India's first Transit Oriented Development. It is the most modern gated community in the vicinity.

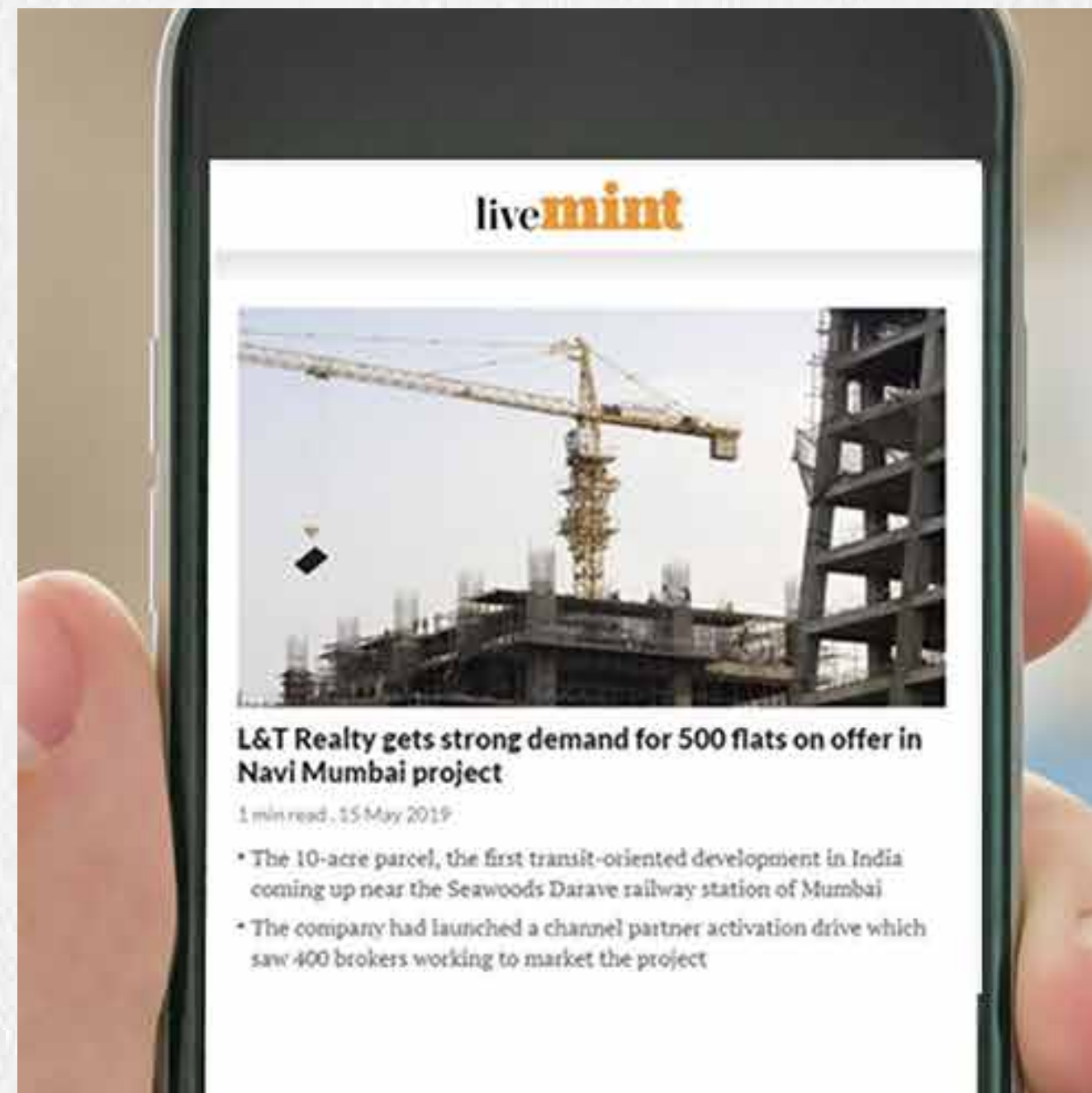


BIGGEST
SUCCESS
OF 2019



1800+ EOIS RECEIVED IN JUST 5 DAYS

IN THE NEWS - MAKING HEADLINES



500 HOMES SOLD
WITHIN A RECORD
1 MONTH TIME



A photograph of four pink flamingos standing in shallow, calm water. The water is a light blue color, and the flamingos are reflected in it. A semi-transparent blue rectangular box is overlaid in the center of the image, containing white text. The flamingos are positioned on the left, center, and right sides of the frame.

**This Landmark opens its door again.
Your Second chance to be a part of it.**



Seawoods
—Residences—

NOW PRESENTS

NORTH TOWERS

A HOME TO YOU &
A LANDMARK TO OTHERS



**INDIA'S FIRST TOD -
HERE LIFE IS MEASURED
IN FOOTSTEPS**



**THE MOST MODERN
GATED COMMUNITY OF
NAVI MUMBAI**



**ABUNDANT GREENERY,
IT'S SECOND
NATURE TO US**



A LIFESTYLE THAT'S
ALMOST INDULGENT &
ABSOLUTELY ADDICTIVE



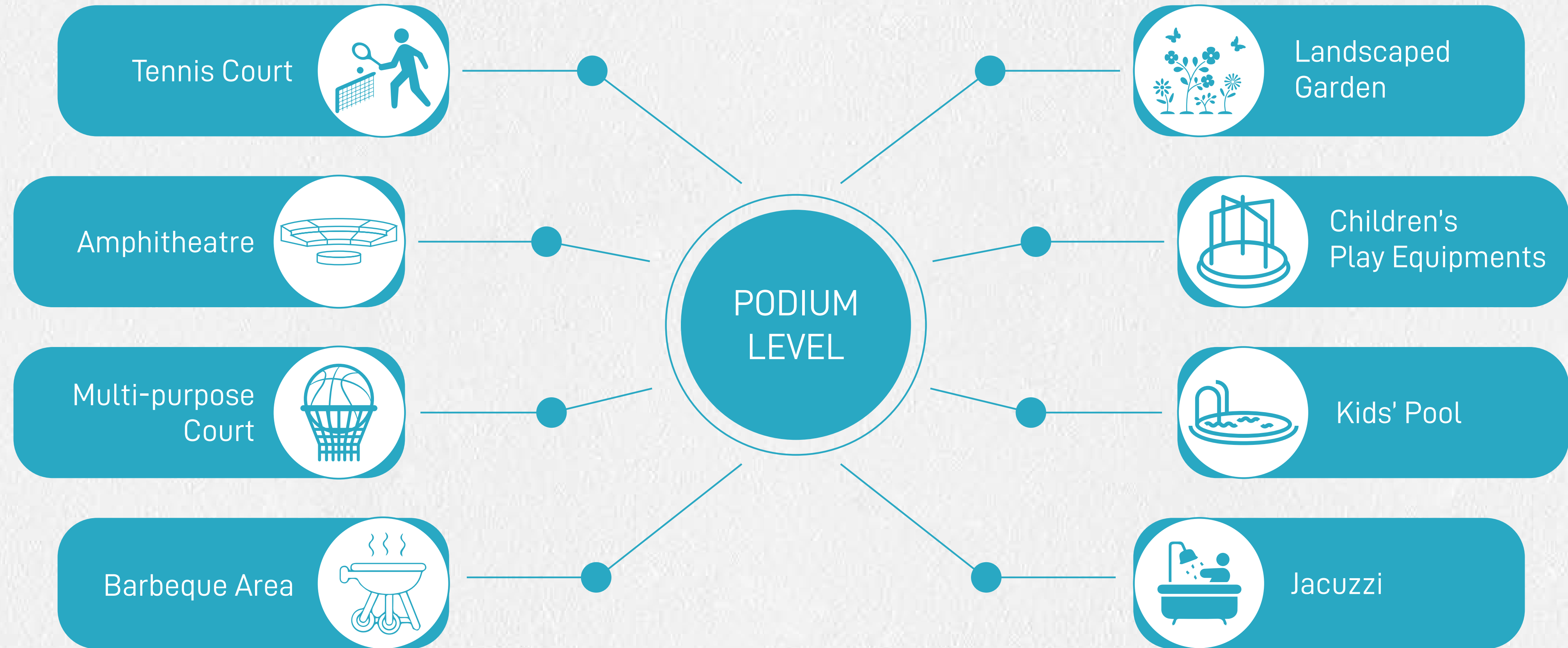
**TRAINING GROUND TO SOME,
PICTURESQUE BACKDROP TO OTHERS**
Olympic Length Swimming Pool

Woods Club



Artistic Impression

OTHER OUTDOOR AMENITIES



**FOR YOUR BUSY EVENINGS
WOODS CLUB**

20,000 Sq. Ft.



**LET YOUR CONFIDENCE
PLAY IN THE COURT**

3 Badminton Courts



A GAME FOR THE CHAMPIONS

Billiards



GIVE YOUR BEST SHOT

Table Tennis

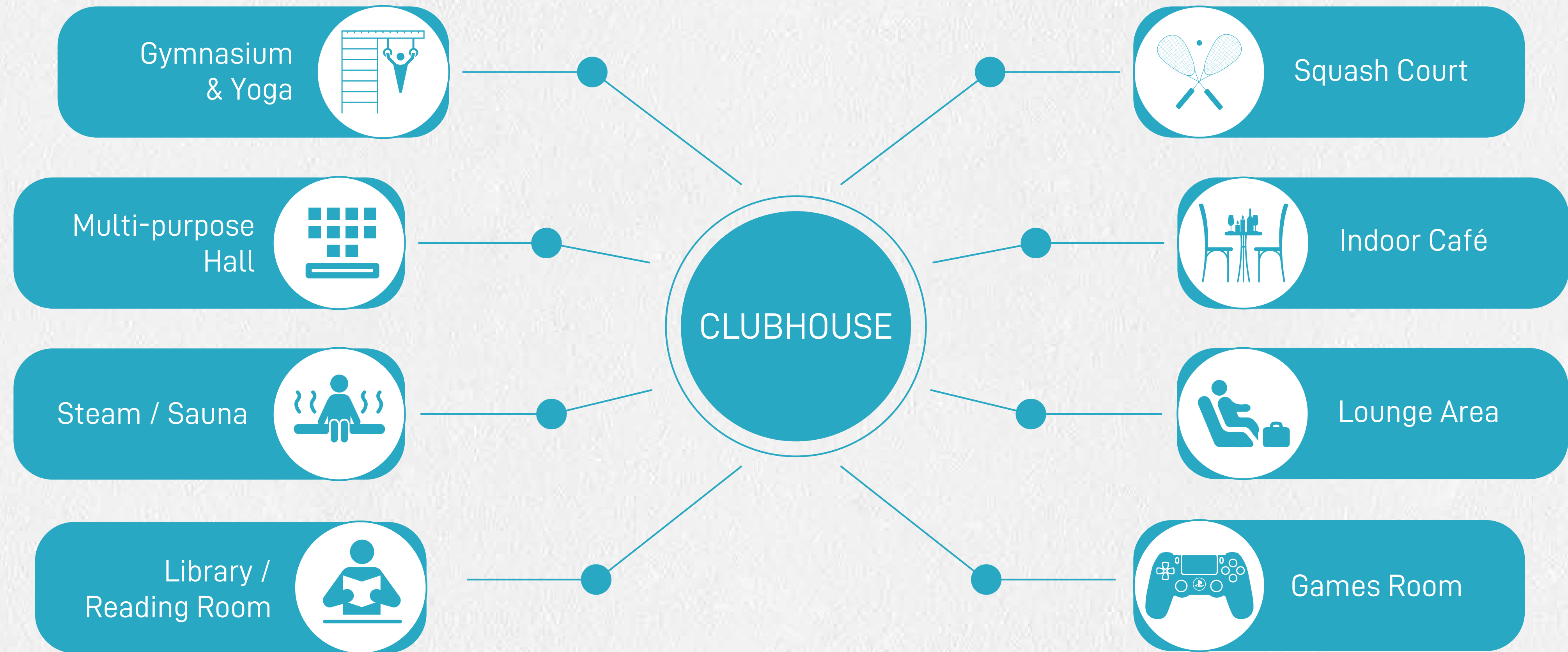


FOR YOUR LOVE FOR MOVIES

Mini Theatre

Woods Club
CINEMAS

OTHER INDOOR AMENITIES

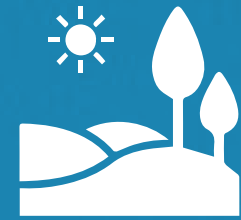


REASONS TO CHOOSE NORTH TOWERS



Thoughtful Design

Spacious
Apartments &
Efficient Layouts



Mesmerising Views

Unobstructed
views of the hills
& landscape



Locational Advantage

Footsteps away from
mall, station &
office spaces



L&T's Assurance

Hallmark in Quality,
Timely Delivery
& Transparency

**MADE FOR SATURDAY NIGHT HOSTING,
AND SUNDAY LOUNGING**
Living Room



YOUR PRIVATE GETAWAY

Master Bedroom



**CRAVE TO COOK,
AND NOT JUST EAT**

Kitchen



A LOCATION THAT MAKES EVERYTHING ACCESSIBLE, EVEN ENVY

65 min. MUMBAI INTERNATIONAL AIRPORT

12 min. to Vashi
54 min. to Colaba
65 min. to Mumbai International Airport
180 min. to Pune

MUMBAI

NAVI MUMBAI

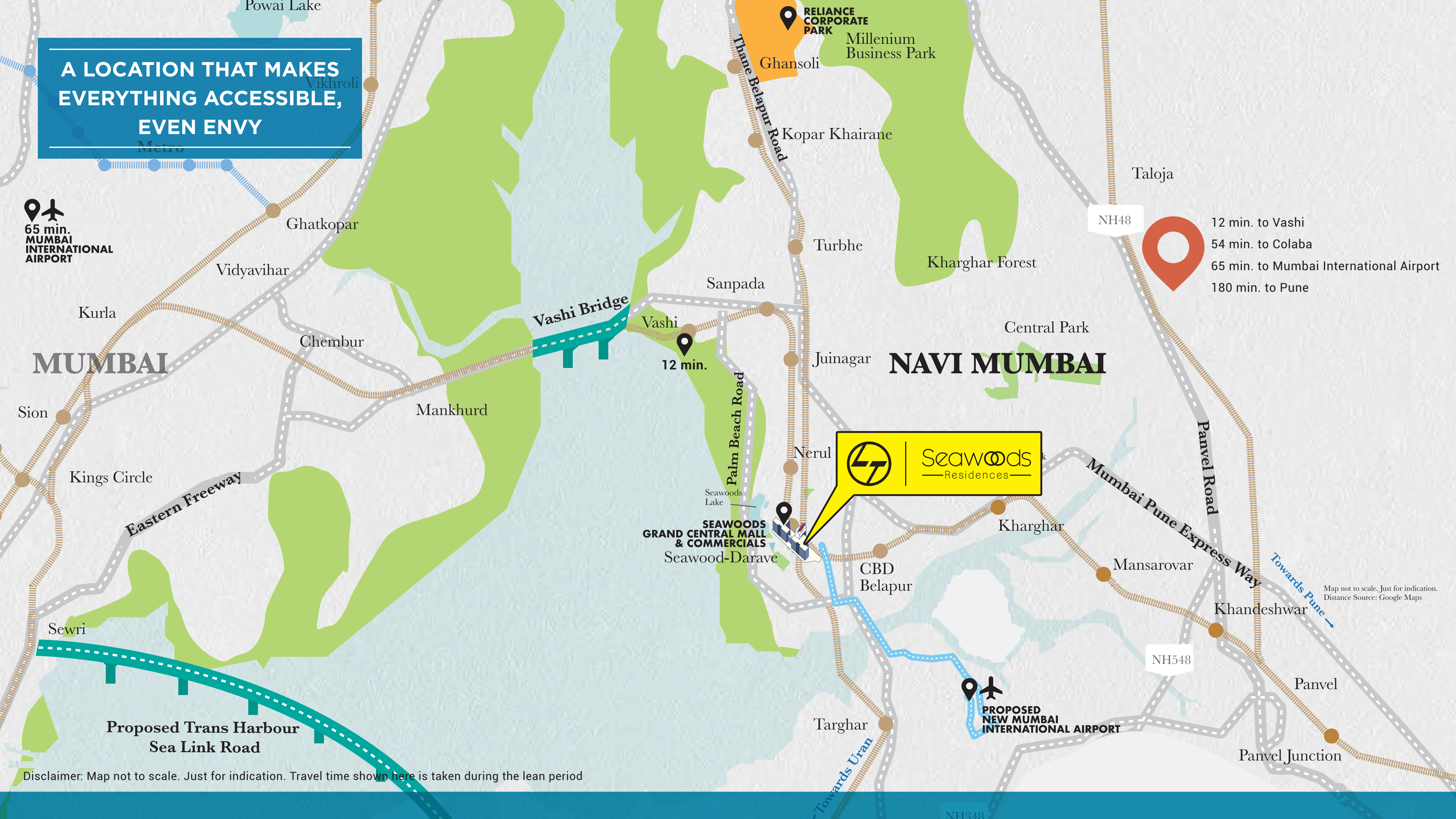
 **Seawoods Residences**

SEAWOODS GRAND CENTRAL MALL & COMMERCIALS
Seawood-Darave

PROPOSED NEW MUMBAI INTERNATIONAL AIRPORT

Disclaimer: Map not to scale. Just for indication. Travel time shown here is taken during the lean period

Map not to scale. Just for indication. Distance Source: Google Maps



THE PLACE FOR YOU TO BE

EDUCATIONAL INSTITUTES:

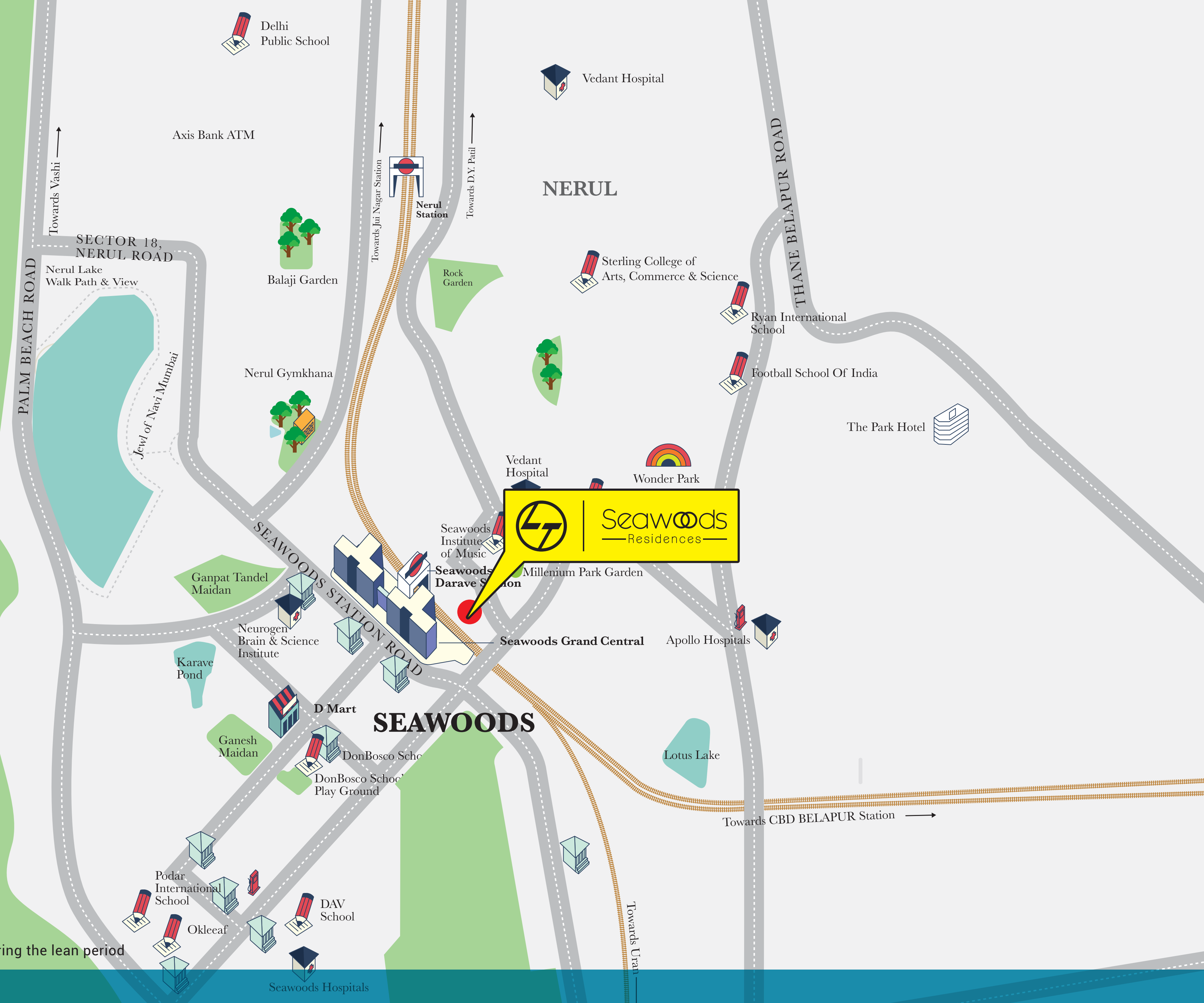
- Don Bosco School - 5 min
- Podar International School - 8 min
- Delhi Public School - 10 min
- DY Patil University - 10 min

HEALTHCARE FACILITIES:

- Vedant Hospital - 1 min
- Terna Speciality Hospital - 9 min
- DY Patil Hospital - 10 min

SHOPPING & ENTERTAINMENT:

- Seawoods Grand Central Mall - 1 min
- Wonders Park - 3 min
- D Mart - 4 min
- Nerul Gymkhana - 7 min



Disclaimer: Map not to scale. Just for indication. Travel time shown here is taken during the lean period

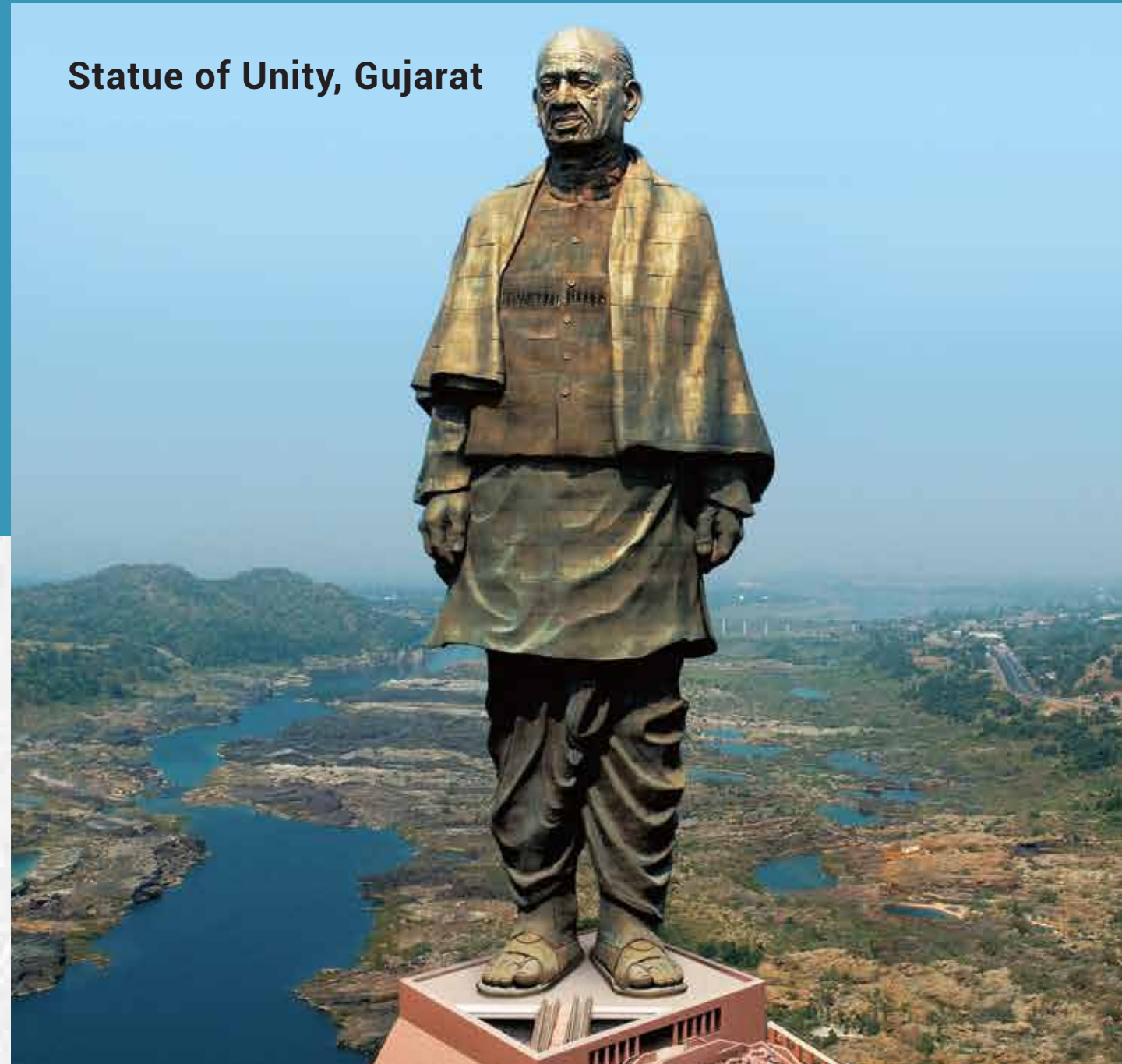
LIMITLESS POSSIBILITIES WITHIN THE BOUNDARIES



- A. Main Entry
- B. The Grove Walk
- C. Retails Plazas
- D. Access to Seawoods Station
- E. Jogging Track
- F. Kid's Outdoor Gaming Zone
- G. Multi-Pupose Court
- H. 50m Lap Pool
- I. Kids' Pool
- J. Open Air Amphitheatre
- K. Clubhouse Roof Top Garden and Barbecue Area
- L. Jacuzzi
- M. Toddlers Play Area
- N. Kids Play Area
- O. Seniors Area
- P. Tennis Court

Disclaimer: Size & location of development is subject to change

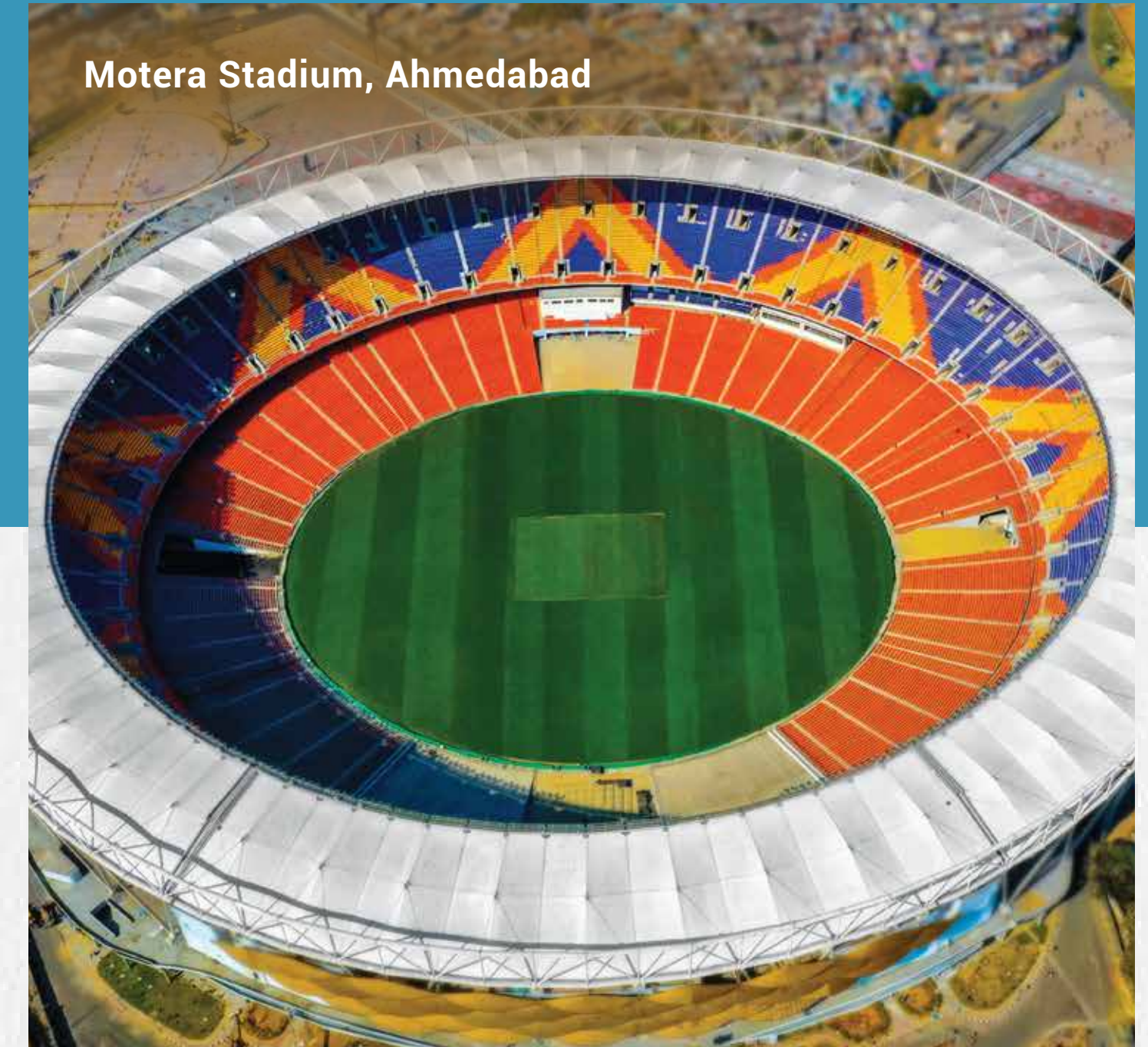
Statue of Unity, Gujarat



Chhatrapati Shivaji International Airport Terminal 2, Mumbai



Motera Stadium, Ahmedabad



Larsen & Toubro, a USD 20 Billion conglomerate. You've seen this name on megastructures, gigantic construction sites and in the headlines - reporting benchmark setting projects in India and abroad. From our earliest days of manufacture to our most recent projects, L&T has been a critical part of India's growth. Today, many of India's iconic buildings, airports to IT parks, malls to monuments, carry our signature of excellence.

CRESCENT BAY, PAREL



- **Founded in 2011**
- **70mn. Sq. ft. Development Portfolio**

REJUVE 360, MULUND



- **47mn. Sq. ft. Gated communities**
- **13+ Mixed Use Development**

EMERALD ISLE, POWAI



- **23mn. Sq. ft. Commercial & Retail Development**