



PURAVANKARA



IT'S A DIFFERENT WORLD IN HERE



Off Sarjapur Road

The pioneers of community living!

EXCLUSIVE. ELEVATING. EXALTING.

The minute you step into Purva Skywood, your senses will encompass you into an experience that is truly out of the ordinary. Feel the breeze caress your face with silken strokes. Watch your eyes widen as they soak in an entire spectrum of never-seen-before colours. And listen with muted awe as exotic birds perched on tree tops recite their own compositions. With seven imposing towers that greet you from a distance, 12.75 acres of serenity that transport your senses to a different world, 728 aesthetically designed 2, 3 and 4 BHK apartments that range from 1263 to 2340 sq. ft. and amenities that are straight out of a dream, it truly is a different world in here.



MASTER PLAN



Master plan is subject to change

Legend

1.0.	Entry Precinct	3.4.	Lily Pool	5.0.	Club / Amenities	6.1.	Stony Brook
1.1.	Entry Gate	4.0.	Central Garden	5.1.	Entry Square	6.2.	South Meadow
1.2.	Exit Gate	4.1.	Skywood Promenade	5.2.	Swimming Pool	6.3.	Golden Woods
1.3.	Concierge & Security	4.2.	Tennis Court	5.3.	Kids' Pool	7.0.	Kids' Play Zone
2.0.	Foyer Garden	4.3.	Multi-purpose Court	5.4.	Entrance Pathway	8.0.	Cricket Lawns
3.0.	North Garden	4.4.	Basketball Court	5.5.	Yoga Lawns	9.0.	Aroma Garden
3.1.	Lazy Brook	4.5.	Picnic Lawns	5.6.	Amenity Plaza / Supermarket Entry	10.0.	Old Folks' Corner
3.2.	North Meadow	4.6.	Amphitheatre	5.7.	Barbecue Lawn	11.0.	Meditation Court
3.3.	Silverwoods with Jogging Track	4.7.	Skating Rink	6.0.	South Garden	12.0.	Sports Facilities
		4.8.	Paw Park (Dog Park)				



AMENITIES

Amphitheatre | Cricket Pitch | Skating Rink | Meditation / Aerobics Room | Squash Court | Billiards / Pool Table | Table Tennis | Jogging Track | Gymnasium | Steam and Sauna | Jacuzzi | Swimming Pool | Toddlers' Pool (with associated changing rooms and toilets) | Party Hall | Basketball Court (mini court) | Tennis

Court | Multi-Purpose Court (Volleyball Court / Badminton Court) | Children's Play Area | Well-lighted Landscaped Garden | Water Treatment Plant | Fire Protection System | Sewerage Treatment Plant | Organic Waste Converter | Provision for Supermarket | Provision for Restaurant | Provision For Crèche

PROJECT SPECIFICATIONS

FIXTURES AND FITTINGS

Doors

Your apartment doors are made of engineered wood frame and shutter. These doors are fitted with fine quality hinges, lock and door handles. For security purposes there is a peephole installed on your main door. The living and dining balcony door is heavy gauge, UPVC / Aluminium framed glazed French windows with sliding or hinged shutters and a mosquito mesh is provided with the windows. The utility door is made of heavy gauge, UPVC / Aluminium frames, glazed door and window with either sliding or hinged shutters.

Windows

Heavy gauge, Aluminium / UPVC framed glazed windows along with sliding or hinged shutters and accompanied with a mosquito mesh and Mild Steel grills.

Ventilators

Heavy gauge, Aluminium / UPVC framed with glazed, louvered, hinged or fixed ventilators accompanied with provision for an exhaust fan.

PLUMBING AND SANITARY FITTINGS

Toilets

Premium quality chromium plated fittings such as Roca, Jaquar, Kohler or equivalent and sanitary fixtures such as Kohler, Toto, Roca, Hindware or equivalent in quality are fixed in all bathrooms of your apartment. A head rose or rain shower with a wall mixer / diverter will be installed in the shower area while the European Water Closet is wall mounted and has a button type flush valve. This includes a seat cover and a health faucet. The granite counter top wash basin comes with a bottle trap. A hot and cold mixer has been included in the master bathroom while there is a pillar cock for other bathrooms.

Kitchen

The counter-top is made from highly polished bull-nosed granite. A stainless-steel double bowl, single drain sink from Frankie or of equivalent quality is fitted in the kitchen. To add to this, there will be a Roca, Jaquar, Kohler or equivalent premium quality hot and cold basin mixer and a water outlet provision for a water purifier above the drain board.

Utility

We have provided a water outlet provision for a washing machine and a good quality long body bib cock in the utility area.

ELECTRICAL

Your apartment has been provided with good quality cables, wiring is done through PVC conduits that are concealed in walls and the ceiling. There are light, fan, exhaust, power, call-bell, TV and telephone points. There is an air conditioning point in the master bedroom and the guest bedroom while provision of dummy air-conditioning points will be made for the other bedrooms. The electrical room will have panel boards, meters, etc. as per KPTCL norms. Each 2 bedroom apt. to have 5000 W KPTCL power supply, 3 bedroom apt. will have 6000 W KPTCL power supply and each 4 bedroom apt. to have 7000 W KPTCL power supply.

TV, TELEPHONE AND INTERNET POINTS

Each apartment will have one internet outlet in all the bedrooms. One outlet for TV, telephone and provision for cable TV connection in the living area and in all the bedrooms.

ELEVATORS

There are hi-speed automatic lifts with designer finish car cabins and an intercom facility which is connected to the security cabin.

D.G.

Back-up for common area lighting, pumps, lifts and 2000 W back-up for 2 bedroom apts., 3000 W back-up for 3 bedroom apts. and 4 bedroom apts.

INTRA-COMMUNICATION SYSTEM

There is an intra-communication facility provided from security to each apartment and among apartments in the complex.

HI-TECH SECURITY

Integrated security system for each apartment. Gas leak detector in kitchens and panic button in master bedroom and dining area. Peripheral Vigilance through CCTV / cameras and patrolling by security guards.

FINISHES

Flooring

Each blocks' main entrance lobby is aesthetically balanced with imported, Italian marble or highly polished granite flooring. Vitrified tiles are laid in most of the remaining rooms, namely, the living and dining area, passages leading to bedrooms along with the bedroom floors, balcony, kitchen and the utility area. The toilet is laid with anti-skid / matt ceramic designer tiles.

Walls

All interior wall faces and ceiling is plastered smoothly and painted with acrylic emulsion paint. The dado over the kitchen counter-top is laid with vitrified tiles (600 X 600 mm) / ceramic tiles up to 600 mm ht (2'0"). The bathroom walls are laid with colour glazed designer tiles from the floor to the roof / false ceiling. Exterior fascia of the building is plastered and painted with acrylic based paint and textured surfaces in selective places as per the architect's design to give an elegant look.

Ceilings

Cornices in the living, dining, passages and foyer areas.

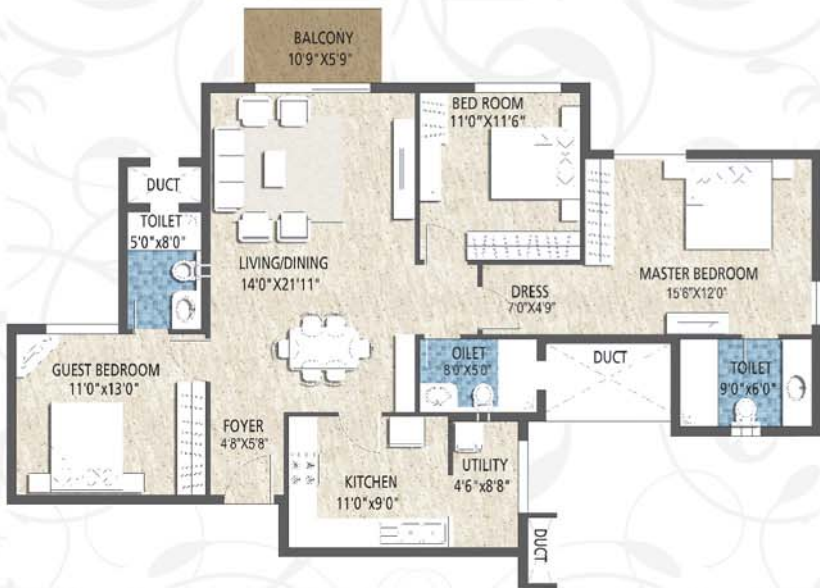
STRUCTURE

The building structure is a reinforced cement concrete framed multi-storied structure. In addition to the open car parking, there is parking in the basement and partly on the ground floor. Apartments are spread over from the second to the tenth floor / eighteenth floor / twentieth floor. Staircase and lifts in each block can be used to access all floors.

2 BHK - 1309 Sq. Ft.



3 BHK - 1690 Sq. Ft.



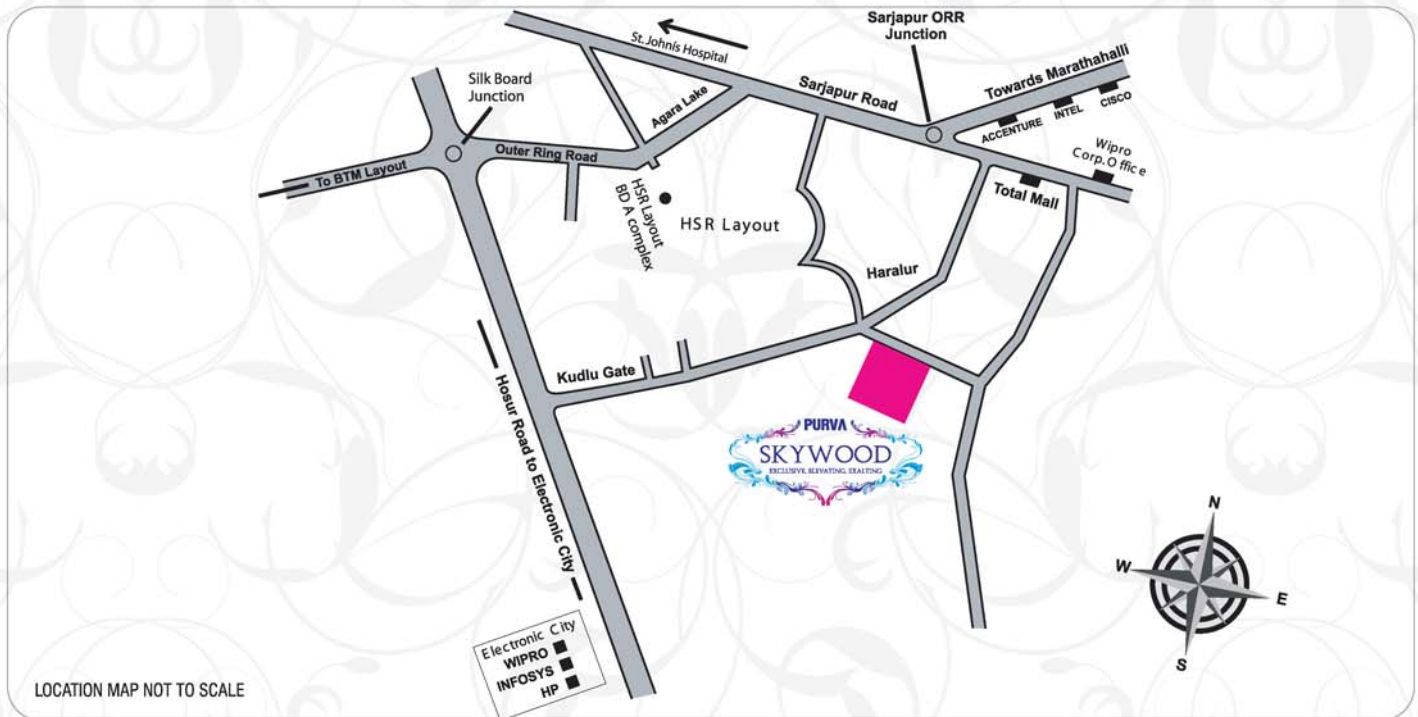
3 BHK - 1860 Sq. Ft.



4 BHK - 2330 Sq. Ft.



LOCATION MAP



PROXIMITY TO PURVA SKYWOOD

2.5 km off Hosur Road | 3 km from HSR Layout | 4 km from Sarjapur Road-Outer Ring Road Junction | 5 km from Electronic City | 8 km from Silk Board Junction | 9 km from Marathahalli | 10 km from Forum Mall (Koramangala)

IN YOUR NEIGHBOURHOOD

Nearby Entertainment Centres and Restaurants

Total Mall | Nilgiris | Innovative Multiplex | Home Store | Forum Value Mall | More | Spencer's | Reliance Fresh | Domino's | Barbeque Nation | Bhagini | La Casa | Kusum Family Restaurant | Beijing Bites | Orchid Suites Hotel | Sagar Deluxe Restaurant | Kanva Restaurant | Nanda's

Nearby Educational Institutions

Indus International School | The International School Bangalore (TISB) | GEAR International School | Ryan International School | DPS - East | Cambridge High School | Inventure Academy | New Horizon Engineering College | Sophia School | B.R.S. Global

Centre for Excellence | Anand Shiksha Kendra | Amrita Vishwa Vidyapeetam | ALT Training College | R.K. Institute of Management & Computer Science | Kidzee | Kalataru Fine Art Academy

Nearby Hospitals

Sagar Apollo Hospital | Lake View Hospital | Starr Hospital | Green View Medical Centre | The Bmax Hospital | Hridhaya Shakthi | Shri Ramachandra Meditation Centre | Punarjani Ayurvedic Speciality Hospital

On-going projects across India

Purva Venezia

Yelahanka,
Bengaluru

Purva Midtown Residences

Off Old Madras Road,
Bengaluru

Purva Atria

RMV IInd Stage,
Bengaluru

Purva Atria Platina

RMV IInd Stage,
Bengaluru

Purva Highland

Off Kanakapura Road,
Bengaluru

Purva Season

C.V. Raman Nagar,
Bengaluru

Purva Oceana

Marine Drive,
Kochi

Purva Eternity

Kakkanad,
Kochi

Purva GrandBay

Marine Drive,
Kochi

Purva Moonreach

On Seaport-Airport Road,
Kochi

Purva Swanlake

OMR,
Chennai

Purva Windermere

Pallikaranai,
Chennai

Purva Bluemont

Singanallur, Trichy Road,
Coimbatore

Chennai

Call: +91-44- 44 55 55 55

E-mail: chennaisales@puravankara.com

Coimbatore

Call: +91-422- 44 55 55 55

E-mail: coimbatoresales@puravankara.com

Kochi

Call: +91-484- 44 55 55 55

E-mail: sales@puravankara.com

Dubai

Call: +971 43595818

E-mail: dubaisales@puravankara.com

Saudi Arabia

Call: 00966 508520407

E-mail: ksa@puravankara.com

PURAVANKARA



The pioneers of community living!

ON CALL 24X7

+ 91 80 44 55 55 55

Any project. Any time. Any place.

Corporate sales office on Ulsoor Road open from 8 a.m and 10 p.m on all days

Corporate / Regional Office: Puravankara Projects Limited, 130/1, Ulsoor Road, Bengaluru - 560 042.

Site Address: Survey No. 92, Off Kudlu Village, Haralur Road, Sarjapur Hubli, Annekal Taluk, Bengaluru - 560 102.

Website: www.puravankara.com | Email: sales@puravankara.com

Purva Skywood is financed by Standard Chartered bank. Loans available from all leading banks.



Scan this QR code
to know more about
Puravankara

CREDAI
BENGALURU