



LIFE AS YOU DREAMT

LIFESTYLE AS YOU ASPIRED  
LOCATION AS YOU DESIRED

1 | 2 | 2.5 BED HOMES



SHILPHATA, MUMBAI

## A LEGACY OF EXCELLENCE

Puravankara Limited is one of India's leading listed real estate companies headquartered in Bengaluru.

47+ years of building some of the India's most recognised landmarks has helped us build homes loved by millions across 9 cities in India.

Puravankara's signature is its luxury themed projects inspired by the most beautiful places and experiences curated from around the world. The group's legacy is one of excellence delivered on time. And often much ahead of time. Adopting advanced construction science and innovation technology long before it has become an industry trend.

At Puravankara, all our endeavors revolve around just one entity - our customers. Their needs, dreams and aspirations are pivotal to our decisions. We call it "The You Philosophy".

47+  
YEARS  
OF BRILLIANCE

09  
INDIAN CITIES  
ON OUR MAP  
& MORE INLINE

1<sup>st</sup>  
TO INITIATE  
THEME BASED  
RESIDENTIAL LIVING

42,500+  
HOMES  
DELIVERED

43  
MILLION SQ.FT.  
DELIVERED  
SUCCESSFULLY

150+  
AWARDS OF  
EXCELLENCE

## OUR ICONIC BRANDS

ENSURING  
EXCELLENCE ACROSS  
THE VALUE CHAIN



**PURAVANKARA** RESIDENTIAL

Luxury apartments | Villas



**PURAVANKARA** COMMERCIAL

Tech/Business parks | Iconic office buildings | Facility management



**PROVIDENT** RESIDENTIAL

Premium developments



**PURVA LAND** PLOTTED DEVELOPMENT

Theme based unique plotted developments



**STARWORTH**  
INFRASTRUCTURE & CONSTRUCTION LTD.

Engineering and construction



**PURVA® STREAKS**

Interior Design



**propmart**

Real estate services

# OUR PORTFOLIO PROJECTS

THAT TESTIFY TO OUR EMINENCE



## Purva Atmosphere

Near Manyata Tech Park, Bengaluru  
2, 3 & 4 BHK Apartments

RERA No.: PRM/KA/RERA/1251/472/PR/190204/002350



## Purva Zenium

International Airport Road,  
Bengaluru  
2 & 3 BHK Apartments

RERA No.: PRM/KA/RERA/1251/309/PR/190129/002311



## Promenade

A Part Of Purva Palm Beach

Off Hennur Road, Bengaluru  
2 & 3 BHK Apartments

RERA No.: PRM/KA/RERA/1251/446/PR/200205/003243



## Purva Somerset House

Five Furlong Road, Guindy, Chennai  
3, 4 & 5 BHK Apartments

RERA No.:TN/29/Building/013/2019



## Purva Clermont

Chembur, Mumbai  
2, 3 & 4 BHK Apartments

Maha RERA No.(P51800028571), (P51800028427),  
(P51800028428), (P51800028494), (P51800028492)



## Purva Sparkling Springs

At The Sound of Water

Off Bannerghatta Road  
3 & 4 BHK Villas

RERA No. PRM/KA/RERA/1251/310/PR/210907/004300

# A JOURNEY OF CREATING

## EXTRAORDINARY SPACES

Founded in 2008, **Provident Housing Limited** has one purpose: to make premium homes that provide a holistic lifestyle accessible to every aspiring home-buyer.

Provident is a subsidiary of Puravankara Limited, one of the leading real estate companies in India. Equipped with 14 years of experience, Provident has used revolutionary construction methods and a customer-centric approach to become a leading developer across India.



14  
YEARS  
OF BRILLIANCE

09  
INDIAN CITIES  
ON OUR MAP  
& MORE INLINE

15,000+  
HOMES  
DELIVERED

60,000+  
HAPPY  
RESIDENTS

11  
MILLION SQ.FT.  
DELIVERED  
SUCCESSFULLY

# OUR PORTFOLIO PROJECTS

## THAT TESTIFY TO OUR EMINENCE



### Provident Equinox

Off Mysore Road, Bengaluru  
2 & 3 BHK Apartments

RERA No. PRM/KA/RERA/1251/310/PR/190525/002576



### Provident Park Square

Off Kanakapura Road, Bengaluru  
1, 2 & 3 BHK Apartments

RERA No. PRM/KA/RERA/1251/310/PR/200226/003305



### Provident Capella

Whitefield, Bengaluru  
Pods, 1, 2 & 3 BHK Apartments

RERA No. PRM/KA/RERA/1250/304/PR/190719/002702

# OUR PORTFOLIO PROJECTS

THAT TESTIFY TO OUR EMINENCE



## Provident Neora

Near Manyata Tech Park, Bengaluru  
2 BHK Apartments

RERA No. PRM/KA/RERA/1251/472/PR/180808/001982



## Kenworth By Provident

Rajendranagar, Hyderabad  
2 & 3 BHK Apartments

OC No: 1/c11/09822/2020



## Provident Skyworth

Behind A J Hospital, Derebail,  
Mangalore  
2 & 3 BHK Apartments

RERA No. PRM/KA/RERA/1257/334/PR/170916/000400



## Provident Aroha Goa

Dabolim, Central Goa  
1, 2 & 3 BHK Apartments

RERA No. PRGO07201071 (Row 7 & 8)



## Provident Winworth

Edappally, Kochi  
2.5 BHK Apartments

RERA No. K-RERA/PRJ/ERN/020/2022



## Provident Palm Vista

Shilphata, Mumbai  
1, 2 & 2.5 BHK Apartments

Maharera Rera No. P51700025841

# THE GROWING IMPORTANCE

## OF SHILPHATA AND YOU

Shilphata is a premium neighbourhood near Thane and Mumbai, a convergence junction connecting Thane city to Navi Mumbai and Kalyan-Dombivali. With the proposed Navi-Mumbai International Airport (NMIA) just 20 mins away, Shilphata is strategically located with the potential to emerge as the next economic powerhouse in Mumbai. It also enjoys proximity to popular weekend destinations like Lonavala & Alibaug which are less than 100 km away.

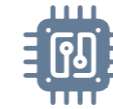
The upcoming Mumbai-Panvel Road Underpass will ease the traffic significantly. Airoli-Katai tunnel to be ready by 2023 will enhance connectivity to Airoli. Virar- Alibaug Multimodal Corridor will be up & running by 2026. With exemplary connectivity by road, rail & the upcoming metro between Kalyan-Taloja by 2024, Shilphata is easily accessible and is the most attractive as both - A FIRST ASPIRATIONAL DREAM HOME AND A LONG-TERM INVESTMENT OPTION.



Stock Image

# VIBRANT, PHYSICAL, SOCIAL

## INFRASTRUCTURE WITH YOU IN THE MIDDLE



### TECH PARKS SEZs

CWD Limited | United Info Tech Park | Dhirubhai Ambani Knowledge City | United Info Tech Park Greenscape Technocity | LOMA IT PARK (Aurum Q Parc) | Hexaware Technology - Approx 15 mins away



### SCHOOLS | COLLEGES

Euro Kids Pre-School - 2.3 km | Gurukul English School - 1.5 km | Lodha World School - 4.7 km | Pawar Public School - 6.6 km | Gurukul Bright World School - 3.4 km | Guardians School (CBSE Board) - 2.3 km



### MEDICAL FACILITIES

Neon Hospital - 4.5 km | Jeevdani Hospital - 3.7 km | Ovi Hospital - 4.4 km | Hopewell Hospital - 5.9 km | Shri Manav Kalyan Hospital - 5.4 km | AIIMS Hospital - 11 km



### STAR HOTELS RESORTS

Entertainment Country Inn & Suites by Radisson - 8.3 km | Sarovar Portico - 5.2 km | Ramada - 7.5 km | Fortune Select - 12 km

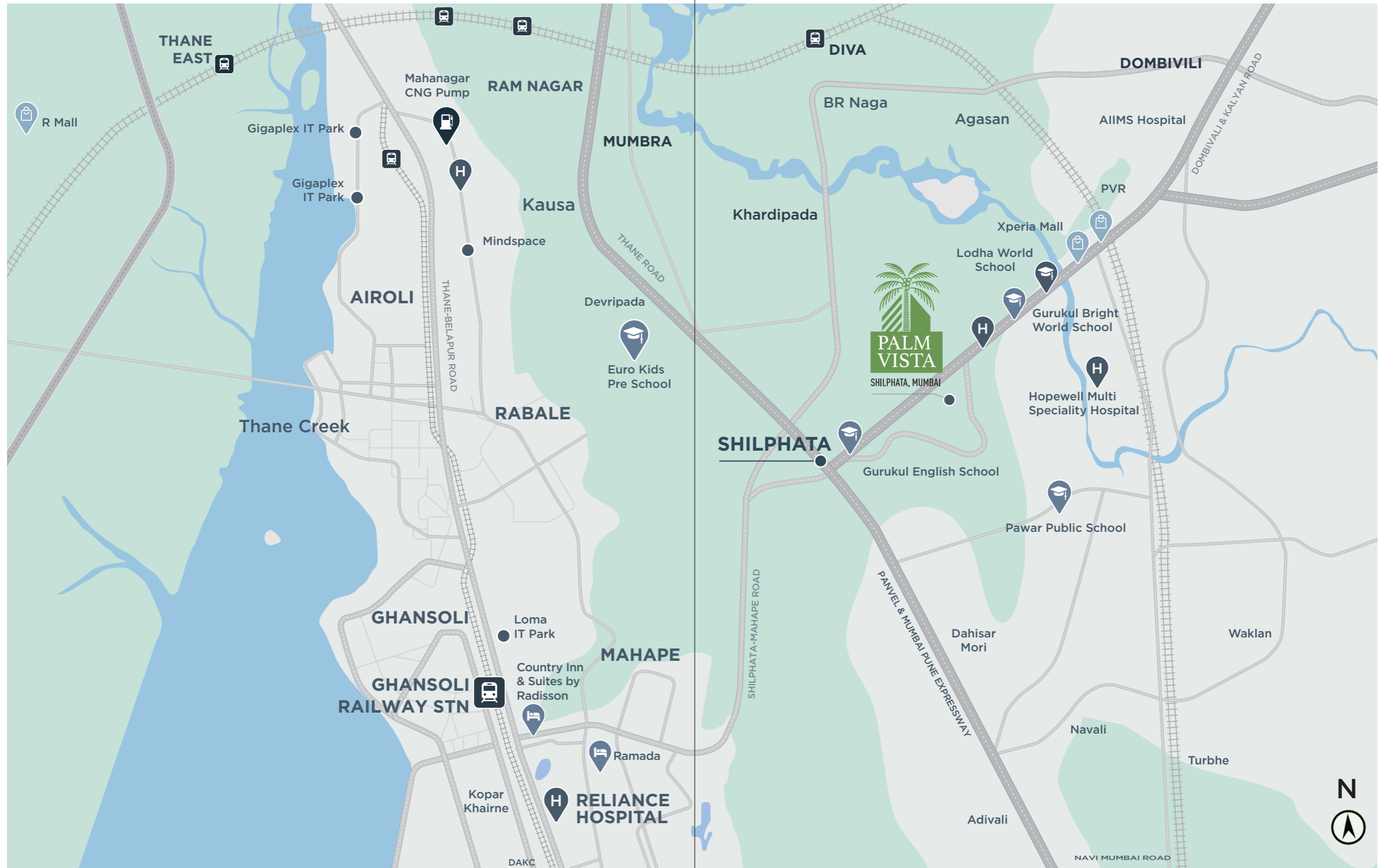


### SHOPPING

Xperia Mall - 4.9 km | R Mall - 7 km

# HERE EVERYTHING EVOLVES

AND REVOLVES AROUND YOU



Not to scale

# DISCOVER PALM VISTA

WELCOME TO YOUR SMART, VIBRANT  
AND FUTURE-READY WORLD

Located in the heart of Shilphata, Palm Vista is the most innovative theme-based lifestyle habitat. Thrive right in the middle of everything nice and yet stay away from the hustle and bustle of the maddening mundane. It is curated to nurture your body, transcend your mind, and elevate your soul; lifting your purpose of life to the highest level.

## SALIENT FEATURES :

- 16 acres of pristine land featuring green landscaped lifespaces
- 8 towering benchmarks spread over 7 acres of luxury living in phase – 1
- 30 varieties of palm trees swaying in the refreshingly cooling breeze
- 60+ state-of-the-art lifestyle amenities that ensure integrated living
- Quintessential apartments that feature smart home automation





# 10 UNIQUE PALM VISTA PROPOSITIONS

FOR THE UNIQUE YOU



Well-connected location of Shilphata



No MLCP. Dedicated parking space in the building



Huge open amenity space



Dedicated clubhouse for residents' use only



Social Infrastructure / schools / hospitals in the vicinity



No extra maintenance costs



Natural light & ventilation streaming from large balconies



Design efficiencies



Under TMC jurisdiction with striking advantage over KDMC



Enhanced privacy with just 4-6 apartments per floor



Artistic Impression

# THE FINESSE OF A MASTERPIECE

IS FINEST ATTENTION TO DETAILS

At Palm Vista, from the outstanding architectural splendour that complements quality structural construction, nothing is left to chance. There are no compromises on quality material, world class processes, customer focused landscaping, best-in-class amenities, refreshingly curated biophilia, environment-friendly sustainable ecosystem and the enduring delivery of ultimate customer delight through product and service excellence.

EXCITING LIMITED PERIOD OFFER!

PAY **20%** NOW &  
ENJOY PAYMENT HOLIDAY  
FOR THE NEXT **12** MONTHS\*

\*T&C APPLY



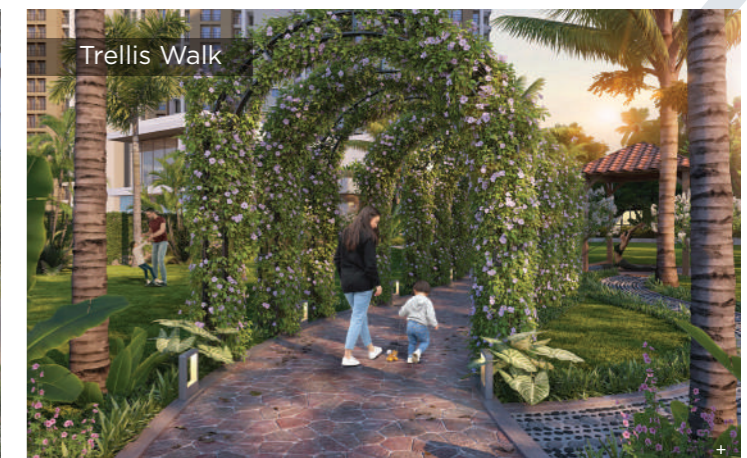
# SOMETHING FOR EVERYBODY

## EVERYTHING FOR SOMEBODY

At Palm Vista, you can give your children the childhood they deserve. Teenagers can enjoy their own space and time in the evergreen lifespaces, or as a newly-married working couple, you can romance the ideal, stress-free work-life balance. A splash in the invigorating pool after a cardio and workout in the gym, is everyone's dream! A game of skill at the courts where purposely losing to win enduring friendships is the key.

### CLUBHOUSE AMENITIES :

- Day Care
- Reading Room / Library
- Outdoor Café
- Multipurpose Hall
- Indoor Games – (Cards, Carrom, Foosball, Table Tennis & Chess)
- Hobby Room / Music Room
- Gymnasium
- Dance Studio
- AV Room



# AMENITIES THAT RECHARGE YOU

365 DAYS, 24 X 7

Jog your tensions away or brisk walk to your favourite workout song. There is something exceptional for everybody and everything fantastic for somebody. At the ground level, podium level and clubhouse, your days will be filled with leisure and recreation!

## GROUND LEVEL AMENITIES :

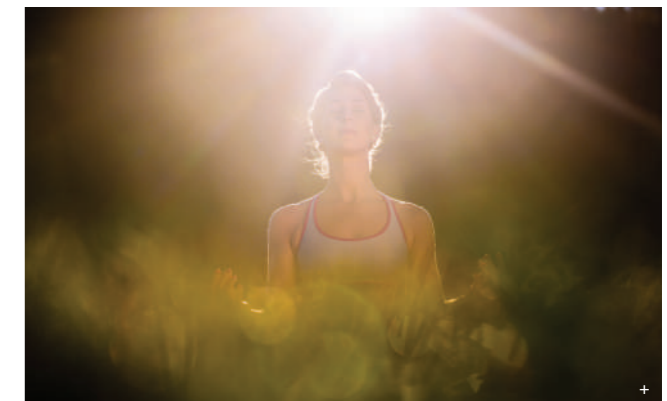
- Jogging Track
- Cricket Net
- Multiplay Court
- Tricycle Track
- Spectator's Seating
- Floor Games
- Kids' Play Area
- Play Wall
- Sensory Trail
- Plantation Island
- Outdoor Reading/Workstation
- Café Deck & Spill Over Lawn
- Wi-fi Lounge
- Senior Citizen's Deck & Lawn
- Seating Coves



Stock Images used for representation purpose only

## PODIUM LEVEL AMENITIES :

- Activity Lawn
- Music Pavilion
- Evening Tents
- Seating Coves
- Yoga Pavilion
- Reflexology Path
- Walking Track
- Putting Lawn
- Barbeque Pavilion
- Pool Deck
- Kids' Pool
- Swimming Pool
- Party Pavilion
- Party Lawn
- Flag Hoisting Platform
- Festival Lawn
- Congregation Lawn
- Amphitheatre
- Gazebo
- Connecting Staircase



+ Stock Images used for representation purpose only



**PALM  
VISTA**

SHILPHATA, MUMBAI

☎ **022-64807900**

Site Address : Provident Palm Vista, Main Kalyan-Shilphata Road, Shilphata,  
Mumbai - 421204, Maharashtra

Strategic Partner

**ANAROCK**  
RESIDENTIAL

For more information, visit <https://maharera.mahaonline.gov.in/> MahaRERA No. P51700025841.  
ANAROCK Property Consultants Pvt. Ltd. MahaRERA Registration No. A51900000108 available on  
<https://maharera.mahaonline.gov.in/>

Disclaimer: The photographs of the interiors, surrounding views and location may have been digitally enhanced or altered and do not represent actual or surrounding views. Standard fittings and finishes are subject to availability and vendor discretion. The images shown in the brochure are not standard and will not be provided as a part of an apartment. The information contained herein is believed to be true but not guaranteed. The colours of the buildings are indicative. This is a reference document intended only to provide generic information and does not constitute an offer or contract.