

NINE ACES

18th Road, Khar, Bandra

Boutique 8 Storey Residences
with 2, 3 and 4 BHK Apartments.
Experience true luxury and
space with a ground to
ceiling height of 10ft.



SENIOR CITIZENS AREA
WITH LANDSCAPE
TERRACE GARDEN

EXTRAVAGANT SKY LOUNGE
& RECREATIONAL AREA

AEROBICS &
YOGA TERRACE

ROOFTOP PREVIEW
OPEN THEATRE

UBER-MODERN
24X7 GYMNASIUM

KIDS PLAY AREA

Nine Aces is the culmination of elegance and luxury with well planned amenities and connectivity.

Nine Aces is an ultra-premium Boutique Residential Tower that offers the best comfort and a lavish lifestyle.





RR Parkon puzzle parking with valet service
Hassle-free and quick way to park your car.



On door video security
Completely secure your home and your loved ones.



Business lounge and library
Maintain the perfect work life balance.



Elegant double heighted lobby

Wait in luxury and refined double heighted lobbies at Nine Aces.



2 Thyssenkurp elevators with terrace access

Reach your home's in sheer elegance.



Kids play area

A safe and secure environment for your children to flourish in.



Fully equipped gymnasium designed by Leena Mogre
Begin your day with a refreshing workout.



Aerobics and yoga terrace
Balance and embrace your inner peace at the yoga terrace.

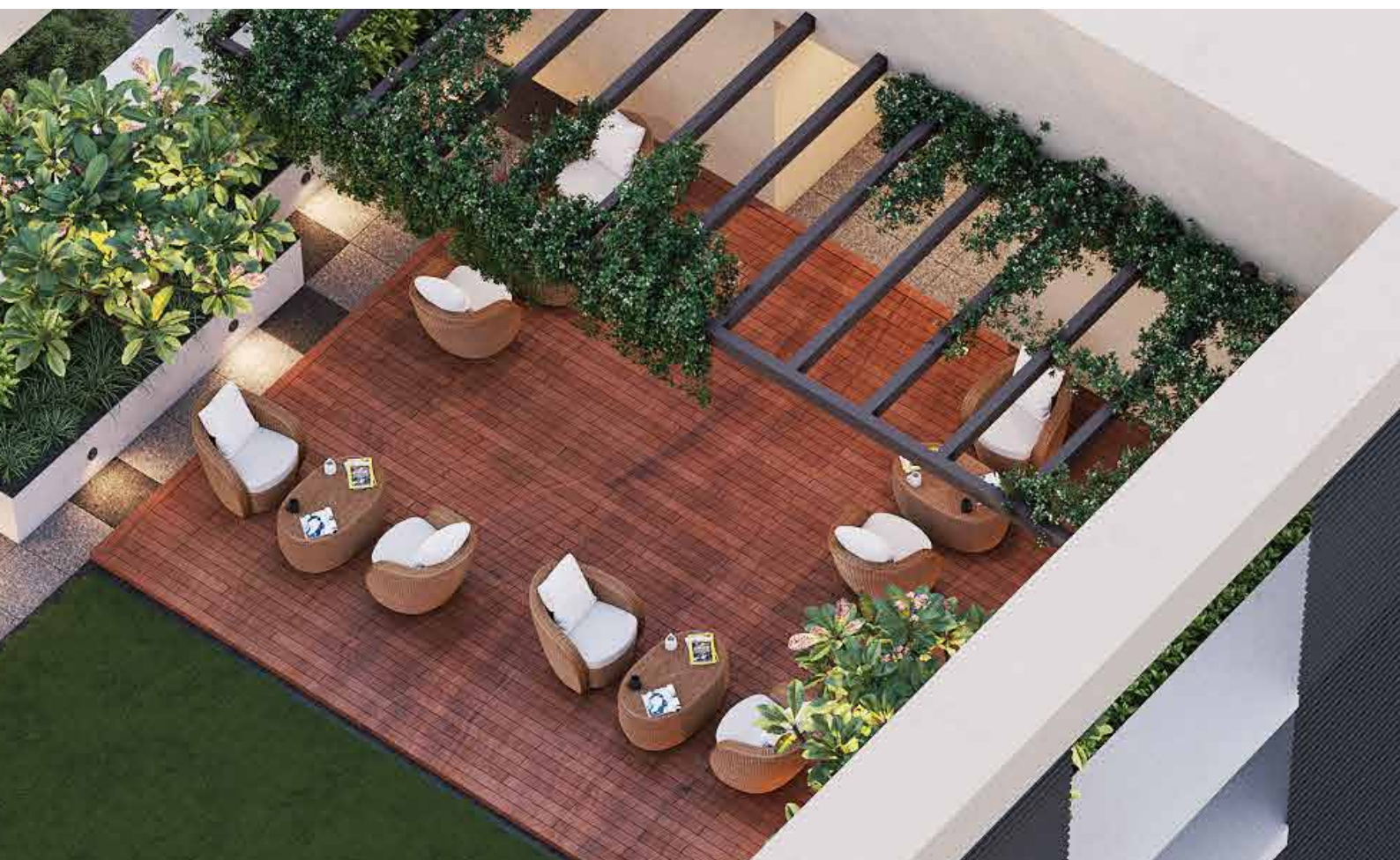


Rooftop preview open theatre
Unwind with your loved ones after a busy day.



Senior citizens area with landscaped terrace garden

Take a breather from the hustle bustle of the city.



Extravagant sky lounge with recreational area

1,500 sq.ft. elegant sky lounge to sit back and relax with family.



Air conditioned smart homes with automation

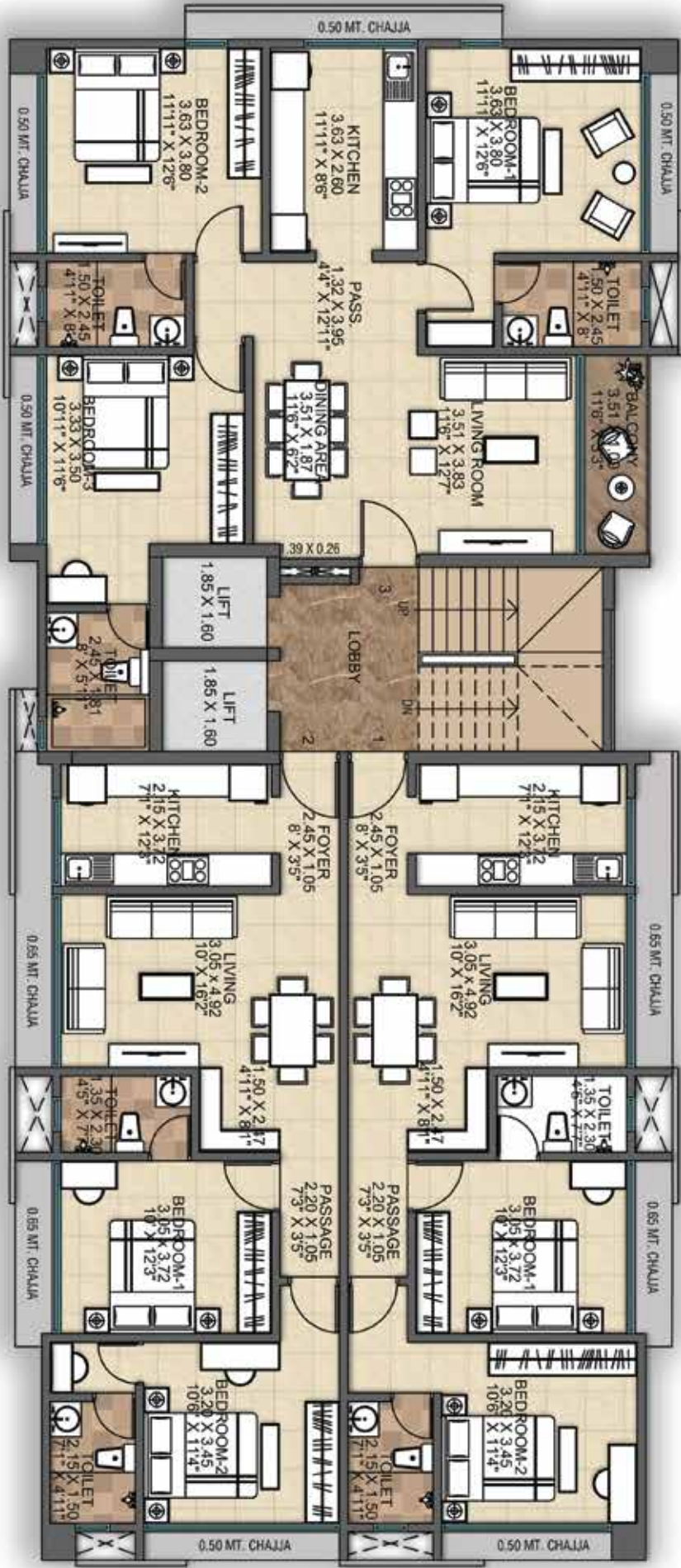
Embrace the future and have complete control of your homes.



Luxurious 2,3 and 4 BHKs with modular kitchens

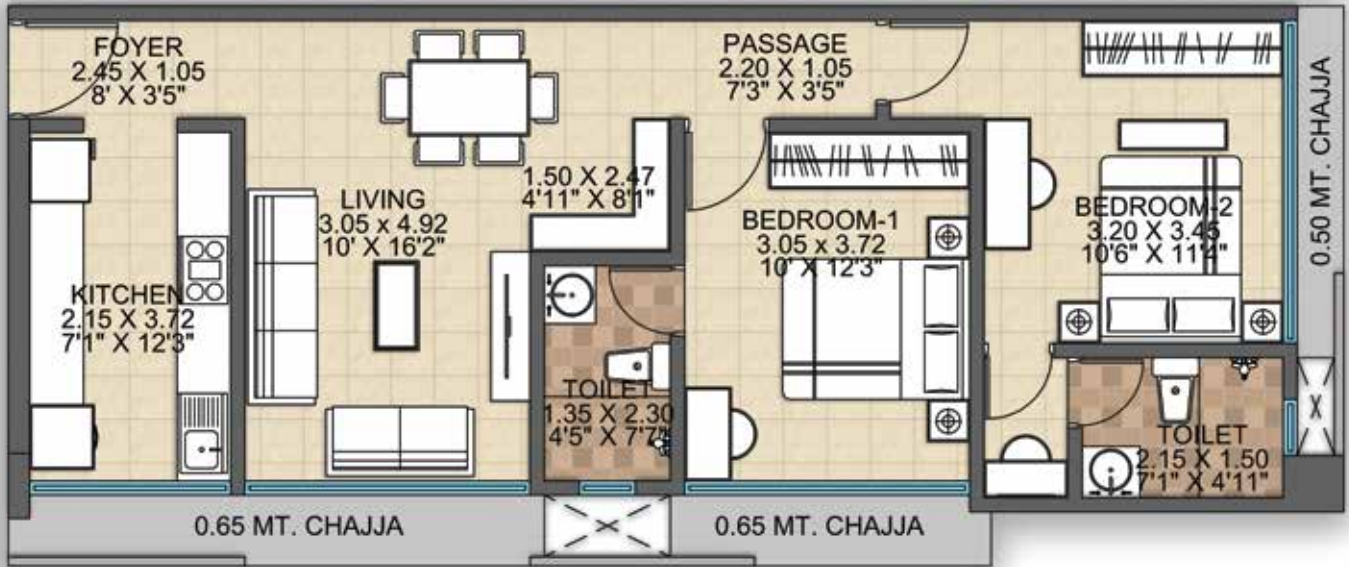
Enjoy cooking delicacies in thoughtfully designed kitchens.

Complete Floor Plan



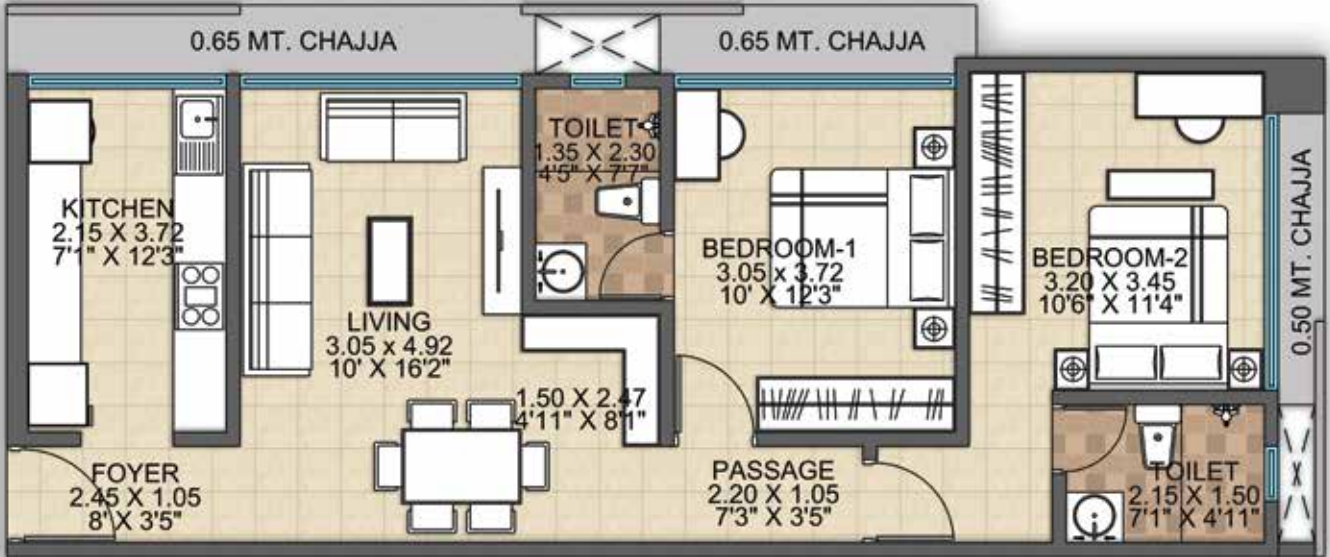
2 BHK Floor Plan (Option A)

718 sq.ft. Rera Carpet



2 BHK Floor Plan (Option B)

718 sq.ft. Rera Carpet



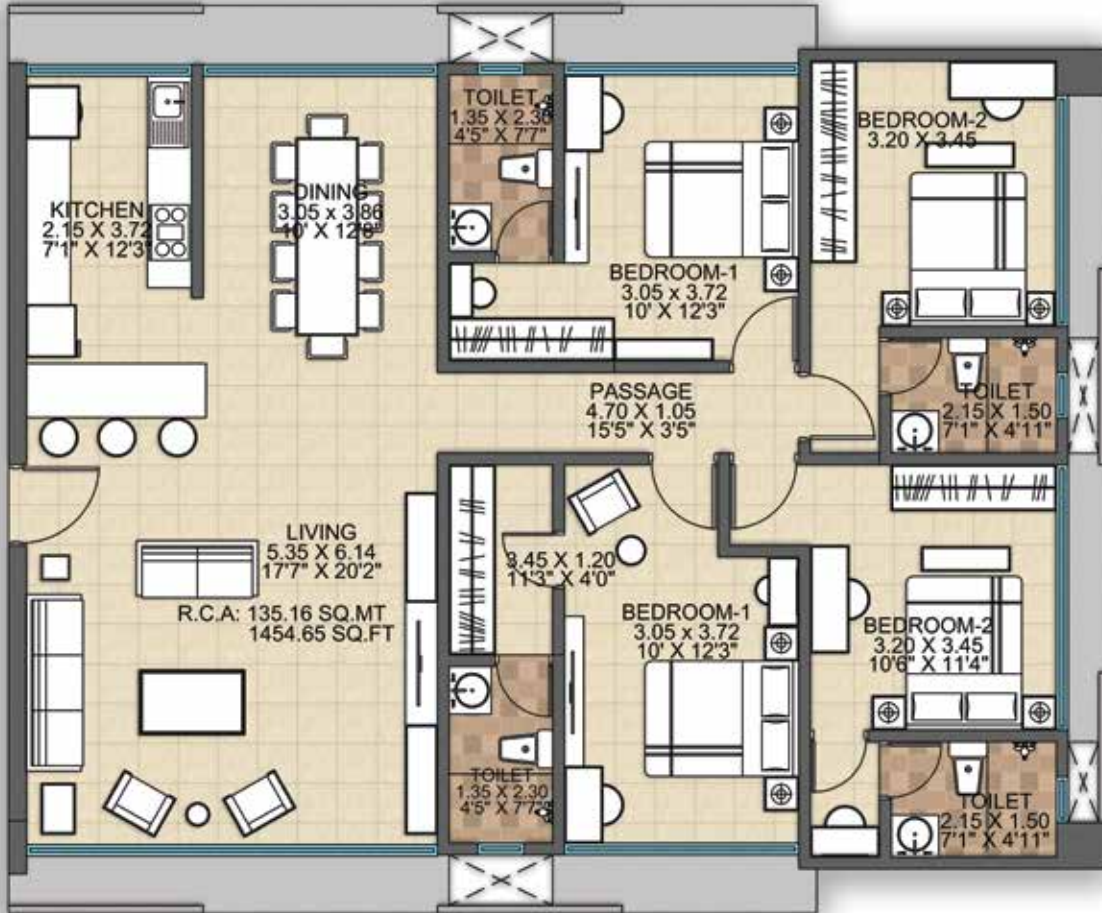
3 BHK Floor Plan

1077 sq.ft. Rera Carpet



4 BHK Floor Plan

1455 sq.ft. Rera Carpet



ABOUT US

The word **Maxrich** derives from two meaningful and impactful words - '**Maximise**' and '**Enrich**'.

In our commitment to do so, we keep Innovation, Quality and Versatility at the forefronts of our mission.

It is our passion to build better standards of living, while also being conscious of the ripples we create as developers of the world.

Our Promoters **Mr. Bhanushali** and **Mr. Aswani** strongly believe that Maxrich is here to deliver a fundamental change in the realty business, delivering true quality and striving for perfection.

We are committed to bringing the functional and the elegant together in all our endeavours by striving for perfection in real estate

We take pride in our integrity towards providing realty that truly inspires the world.

www.maxrichrealty.com

OUR TEAM

Architectural Design Architect :
Concept Architects

Project Approval Architect :
Sohail S. Hajjani

Legal Advisor :
**Law Origin, P. Vas
& Solicis Lex**

Vastu :
Hemant N. Jethwa

MEP Design Consultant :
Invenio Consulting Engineers

Structure Design Consultant :
Sunil R. Shah

PMC :
**Phatarpekar & Associates,
Supreme Engicons**

Interior Design Consultants :
Care Designs



Parks

Rajesh Khanna Garden - 240m
Anad Vihar Park - 600m

Banks

Axis Bank ATM - 220m
ICICI Bank ATM - 400m
Bank of Baroda ATM - 600m
IDBI Bank ATM - 550m
Bank of India ATM - 750m
HDFC Bank ATM - 600m

Hospitals

Mahavir Hospital - 550m
Ramakrishna Mision Hospital - 750m
Daily Care Hospital - 1.8km
Kumar Nursing Home - 450m

Schools

Santacruz West Mun. School - 450m
Podar Jumbo Kids Plus - 450m
St. Elias high School - 550m
B.P.M. High School - 300m

Transport

Koliwada Jetty - 1.4km
Proposed Metro
Aarya Samaj Chowk - 800m
Khar - 1.1km

Other Facilities

Starbucks - 300m
Carter Road - 1.3km
Gurudwara - 550m
Jain House - 230m
Rustomjee Paramount - 110m
Foodhall - 650m
Neelam Food Land - 350m



Maharera Registration No.: P51800045486

Project: NINE ACES CHS LTD , Plot Bearing / CTS / Survey / Final Plot No.:625/8 at Andheri, Andheri, Mumbai Suburban, 400052; Jmj Maxrich Buildcon having its registered office / principal place of business at Tehsil: Andheri, District: Mumbai Suburban, Pin: 400053.



Address: 207, Sri Krishna Complex ,
Opp. Laxmi Industrial Estate,
New Link Road, Andheri West,
Mumbai 400053

E-mail: support@maxrichrealty.com

Website: www.maxrichrealty.com

Contact: +91 8767 442 442



Narayan Bhanushali Group Alliance