

An Unparallel Amenities

Project Amenities

- Eco-friendly Environment
- Secured Campus
- Grand Entrance Gate
- Landscaped Gardens
- Kids Play Area
- Rain Water Harvesting System
- Power Backup for lift
- Lights in Entire Campus

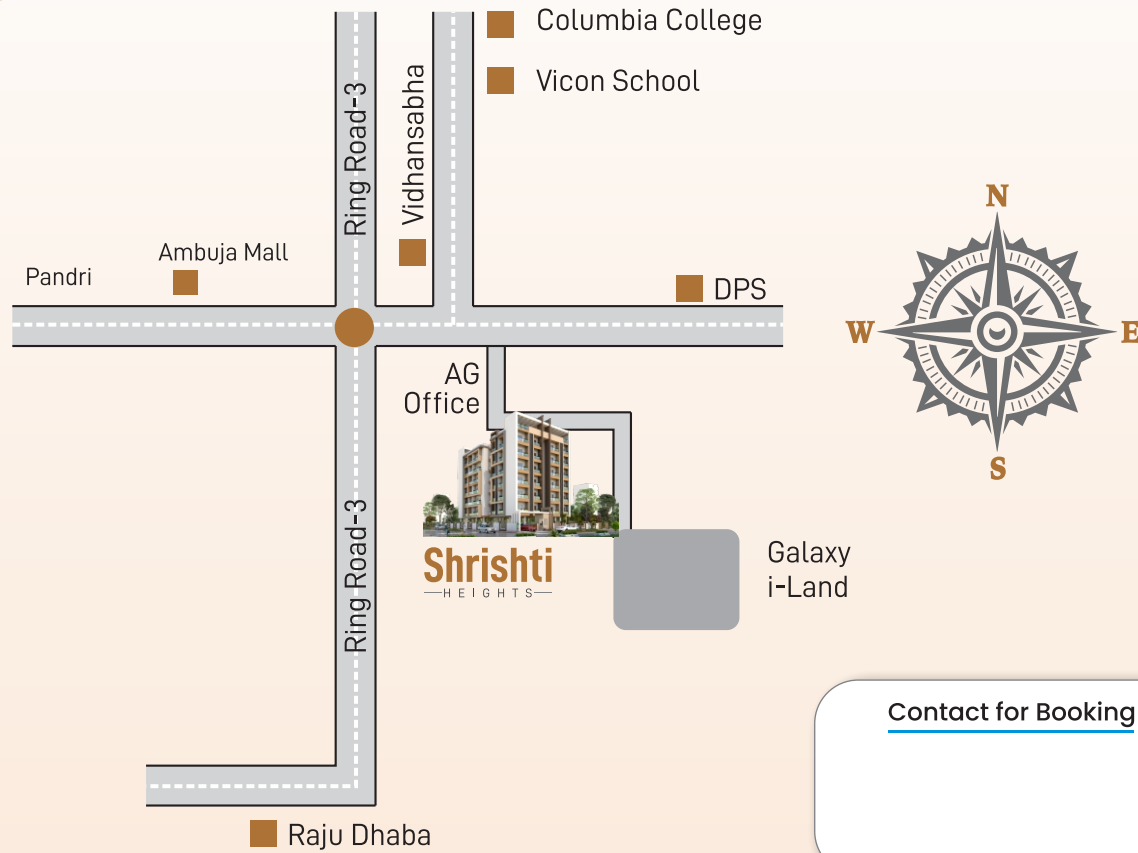
Club House Amenities

- Multipurpose Party Hall
- Gym

Building Amenities

- Stretcher Lift
- Spacious Lobby
- Ventilated flats
- Overheard tank for water supply

Location Map



[Contact for Booking](#)

RERA No.: PCGRERA130422001396



Shrishti

— H E I G H T S —



Project by :
Galaxy
Infraventure

Marketed by :
Paridhi Realities
RERA No.: CGRERA271021A000603

Office Address : 4008/09/10, 4th Floor, Currency Tower, VIP Chowk , Raipuri

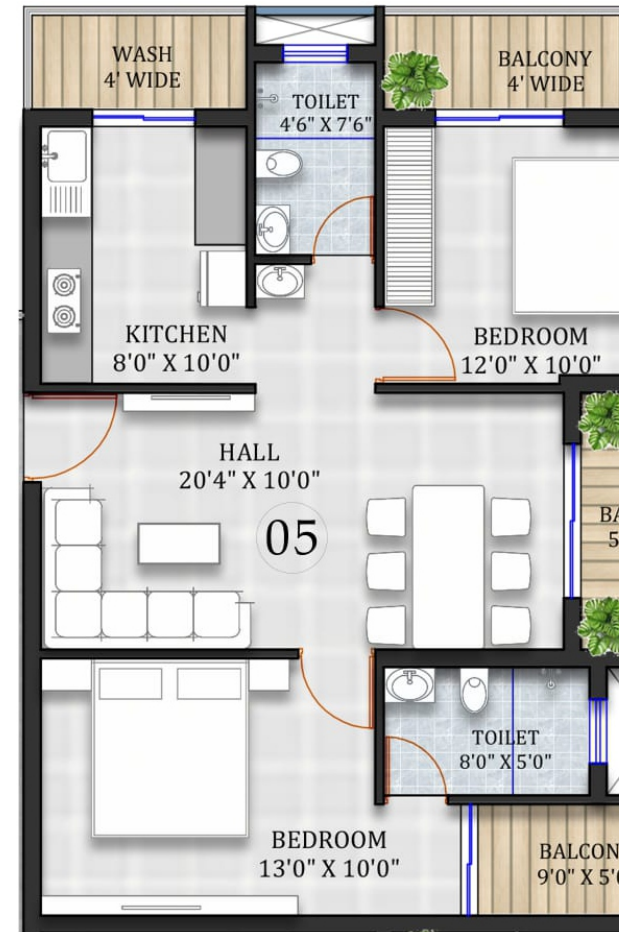
Built-up area | Super Built-up area
909 Sq. ft. | 1111 Sq. ft.



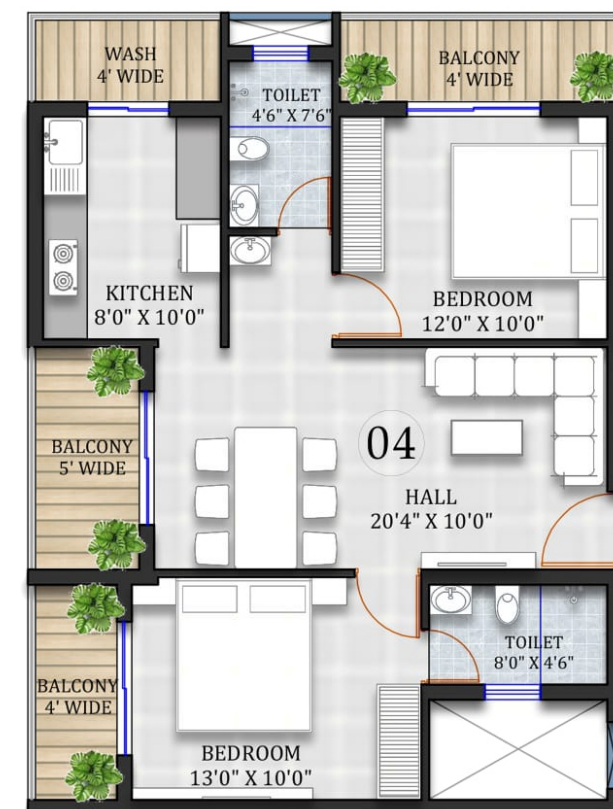
Built-up area | Super Built-up area
932 Sq. ft. | 1139 Sq. ft.



Built-up area | Super Built-up area
928 Sq. ft. | 1134 Sq. ft.



Built-up area | Super Built-up area
729 Sq. ft. | 903 Sq. ft.



Built-up area | Super Built-up area
732 Sq. ft. | 906 Sq. ft.

Built-up area | Super Built-up area
902 Sq. ft. | 1102 Sq. ft.

Specification

- BCC framed structure made up of ISI mark steel
- Inner Wall will be finished with two coat of putty
- Outer Wall will be finished with double coat paint
- Elevation of Building will be finished with Texture Paint
- Floor of living, Dining, Bedrooms will be covered by 2x2 (vitrified Tiles)
- Fitted with granite countertop and Branded Sink
- Triple Channel powder coated Aluminium window
- All door from made up of wood/granite with height of 8 feet
- Only Reputed Brands will be used for all cables modular switches
- Perfectly designed toilets
- Alert security guard along with the CCTV Camera protects will be available.

