



# VERSACE Residencies

New Delhi, India

Concept Stage 100% Report amended as per meeting 03/09/2015



uhalondon

# Contents

Location

Existing Masterplan

Inspiration

Versace Legacy

Development of Tower Form

Tower Setting Out

Development of plan and volume

Materiality

Site Setting Out

Site plan

Elevations

Perspective views

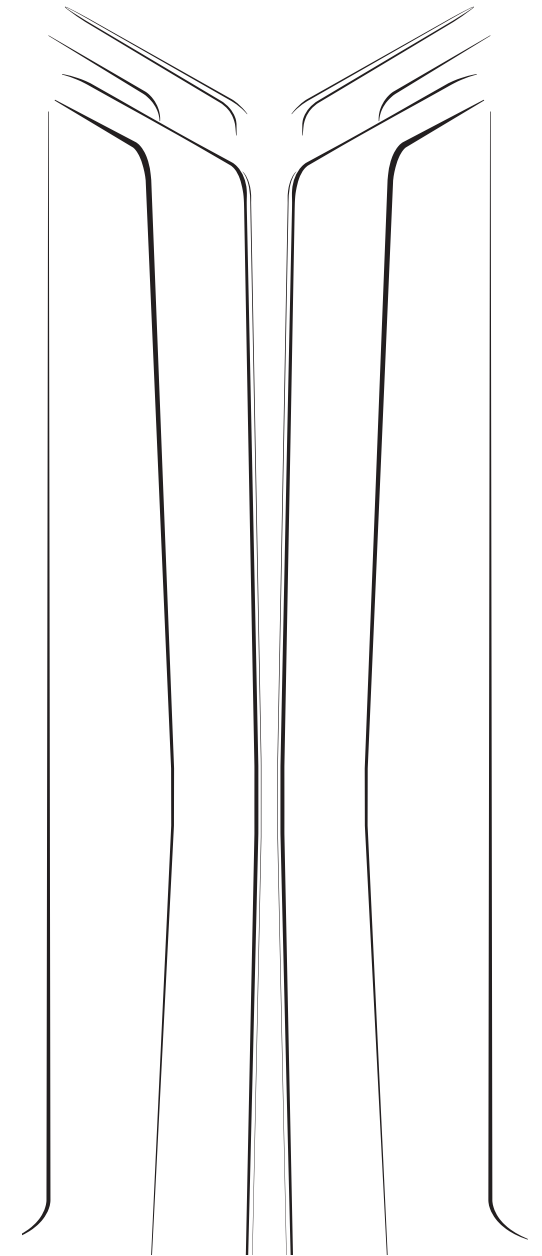
Grand Arrival

Typical Floor plans

Upper Levels of the Tower

Sections

Views



## Location

### Site location - Kishan Ganj, Karol Bagh, New Delhi

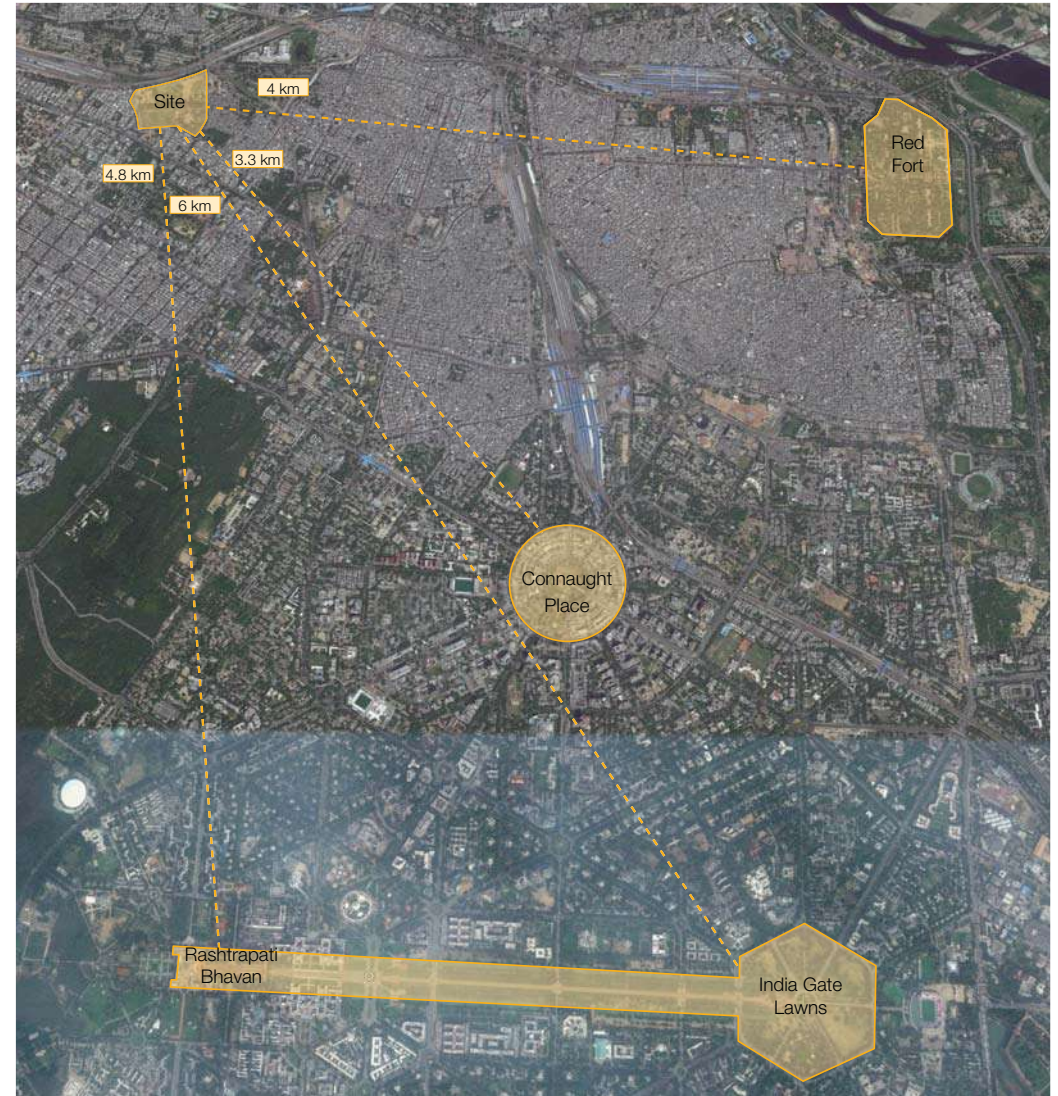
New Delhi serves as the capital of India and seat of the executive, legislative and judiciary branches of the Government of India. It is also the centre of the Government of the National Capital Territory of Delhi. New Delhi is situated within the metropolis of Delhi and is one of the eleven districts of the National Capital Territory of Delhi. Although colloquially Delhi and New Delhi as names are used interchangeably to refer to the jurisdiction of NCT of Delhi, these are two distinct entities, and the latter is a small part of the former.

The foundation stone of the city was laid by George V. Emperor of India during the Delhi Durbar of 1911. It was designed by British Architects, Sir Edwin Lutyens and Sir Herbert Baker. The New Capital was inaugurated on 13 February 1931 by India's Viceroy Lord Irwin.

Although colloquially Delhi and New Delhi as names are used interchangeably to refer to the jurisdiction of NCT of Delhi, these are two distinct entities, and the latter is a small part of the former.

The climate of New Delhi is a monsoon-influenced humid subtropical climate with high variation between summer and winter in terms of both temperature and rainfall. The temperature varies from 46 °C (115 °F) in summers to around 0 °C (32 °F) in winters.

The site at Kishan Ganj in Karol Bagh, is located in close proximity to Connaught Place and other national monuments such as Red Fort, India Gate and Rashtrapati Bhavan. Future residents of the Versace Tower will benefit from generous views of these key city locations year round as well as the pageantry and splendour of the annual Republic Day Military Parade.



Proximity of site to key locations in New Delhi

# Location

Site Photos



# Location

Overall Site Dimensions



# Existing Masterplan

Masterplan provided by GPM



# Inspiration

Delhi monuments - Indian fashion



India Gate



Red Fort



Lotus Temple



Swaminaryan Temple, Akshardham



Traditional + Modern Indian Fashion



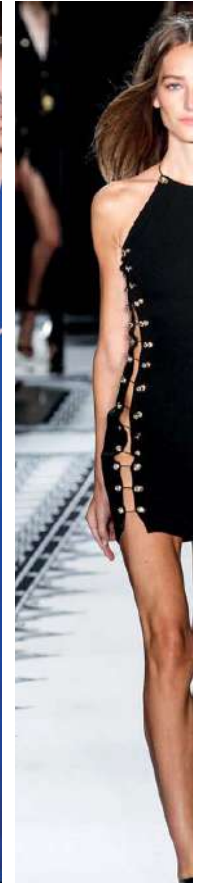
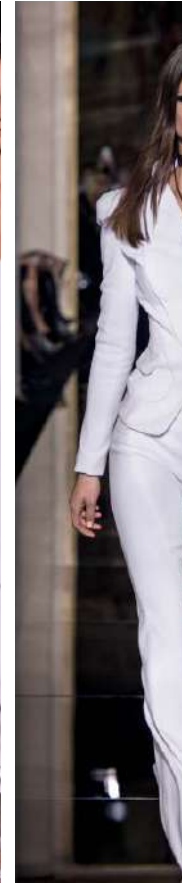
## Versace Legacy



### Versace Interior Design Studio and Versace Home

Gianni Versace (1946–1997) is one of the most colourful and talented designers of the late 20th-century. Versace was born in Reggio Calabria in Southern Italy. His first independent collection was launched in Milan in 1978 followed shortly afterwards by the opening of Versace's first Boutique in Milan. Versace had instant success and was not afraid to combine fashion with art, music and theatre. The following year the long collaboration with the famous American photographer Richard Avedon began for Versace's first advertising campaign. Aided by the talents of his brother Santo and sister Donatella, he forged the vastly successful Versace empire.

Since the untimely death in 1997 of Gianni Versace, his sister Donatella Versace has assumed the role of brand Creative Director. She has since created the 'Young Versace' children's line, alongside their men's and women's collections, and subsequently branched out to establish the highly regarded Versace Interior Design Studio and Versace Home, bringing the fashion house's glamour and luxury into everyday living.





# Development of Tower form

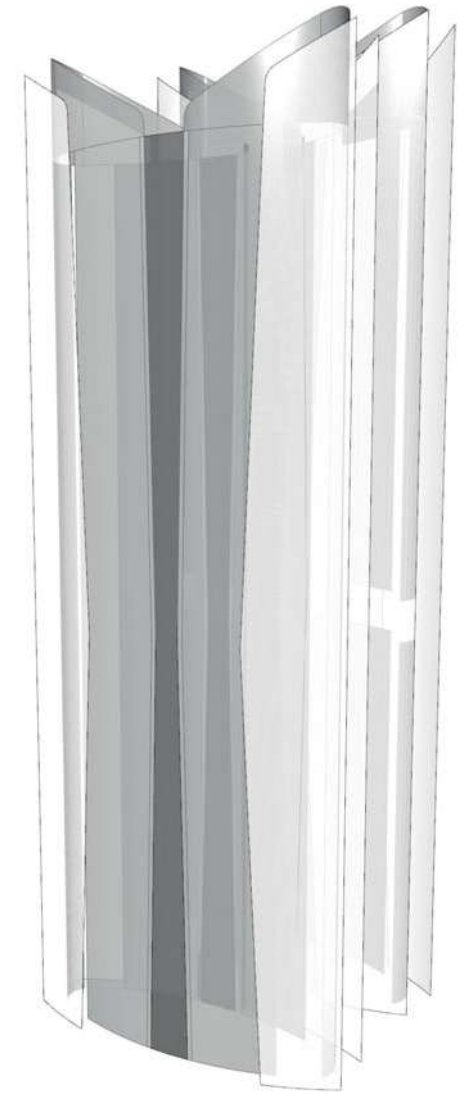
Multiple Layering - Transparency and translucency



Multiple layers

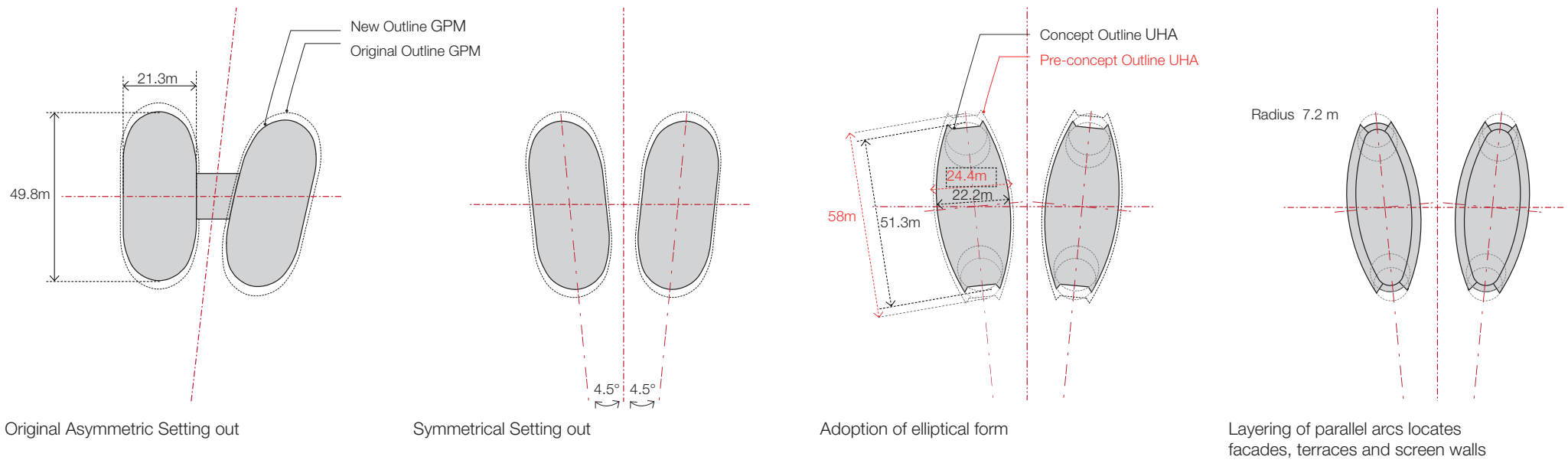


Sculpting of layers



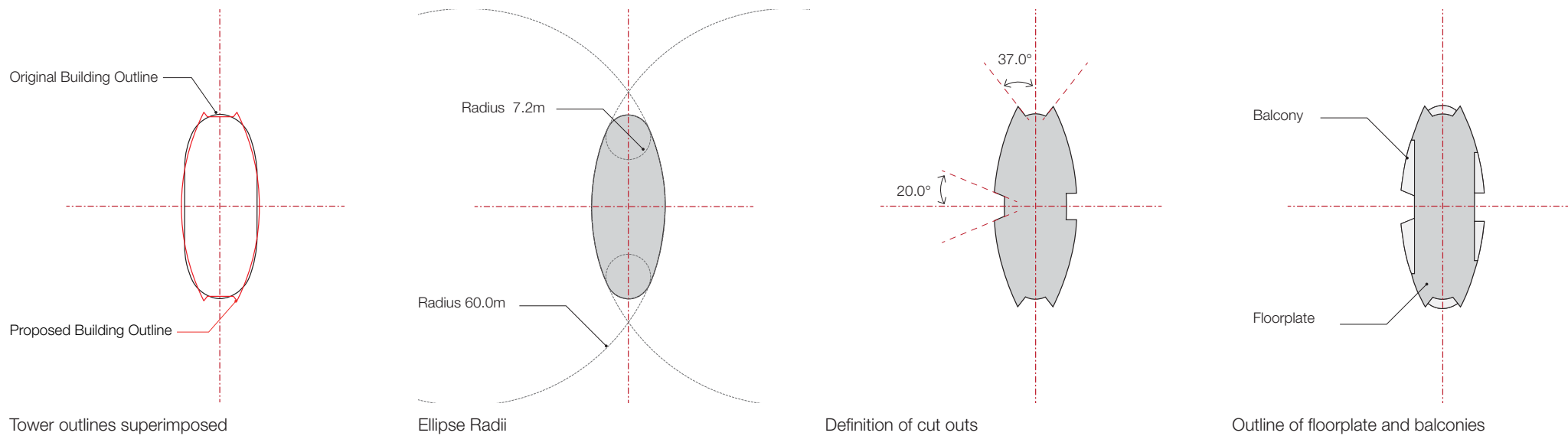
Transparency and translucency

# Tower plan development

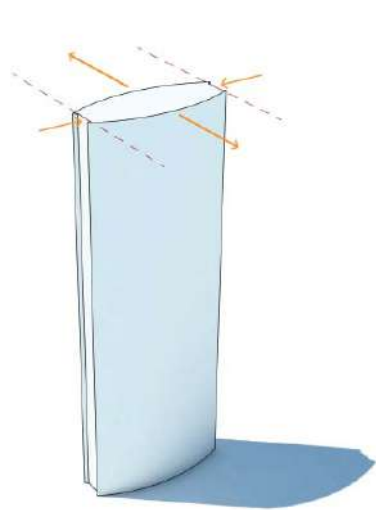


# Development of plan and volume

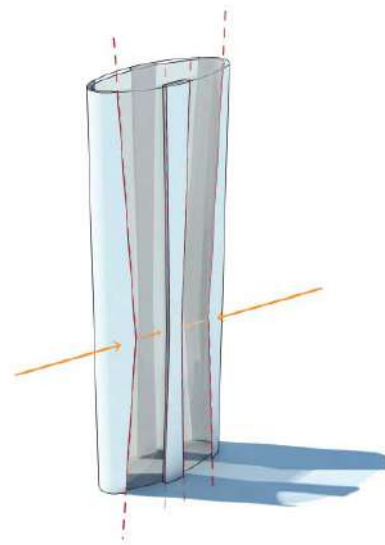
Multiple layers and cutaways



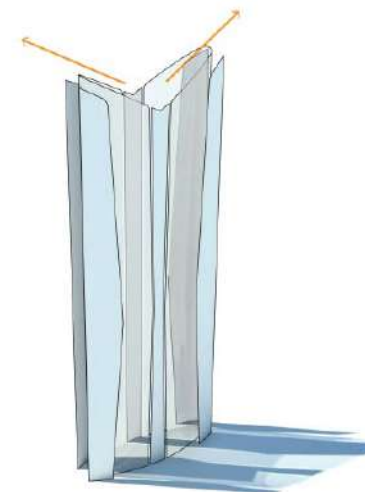
Original massing



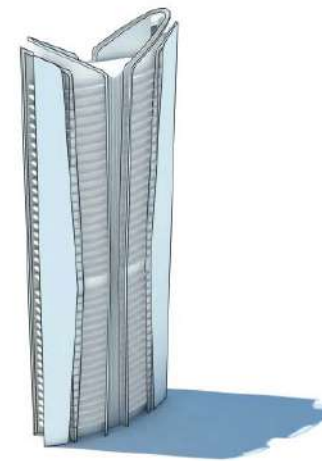
Proposed massing



Articulation of facade layers



Cut out of roofscape

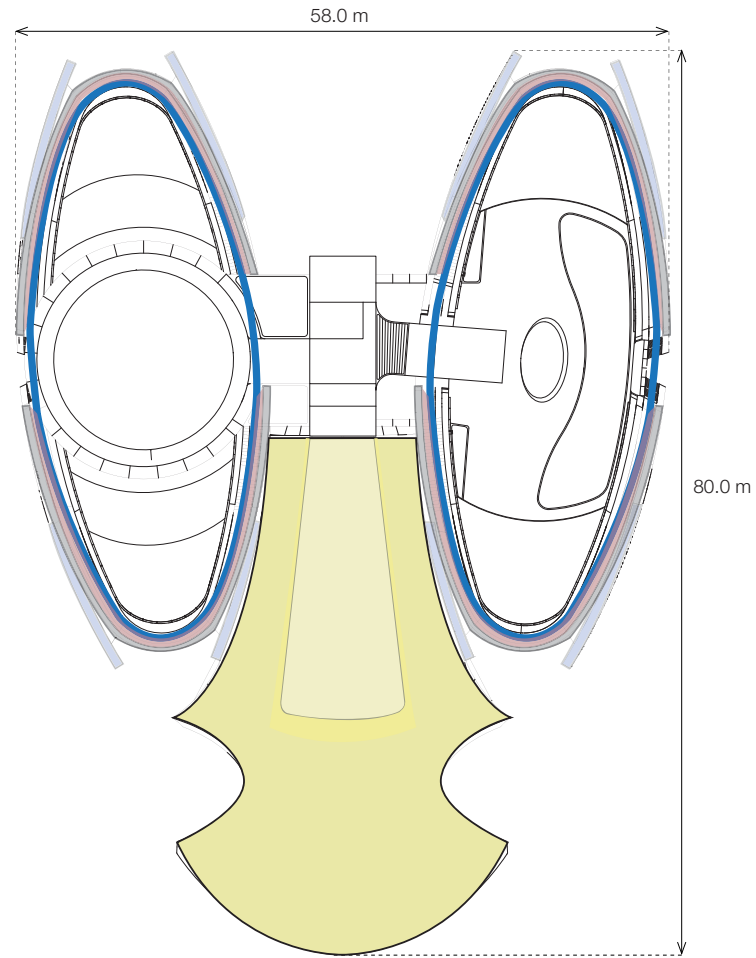


Balconies, ribbons and louvers

# Materials

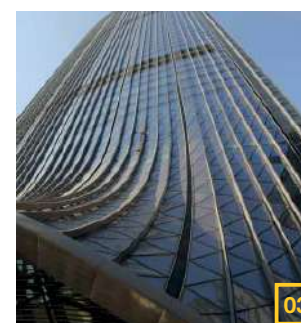
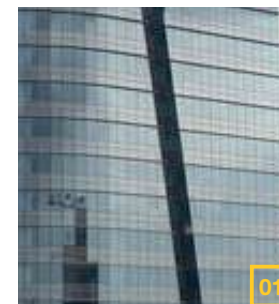
## Material Layers

- Curtain Wall
- Unitized cladding
- Louvers
- Mesh
- Alu. Panels



# Materiality

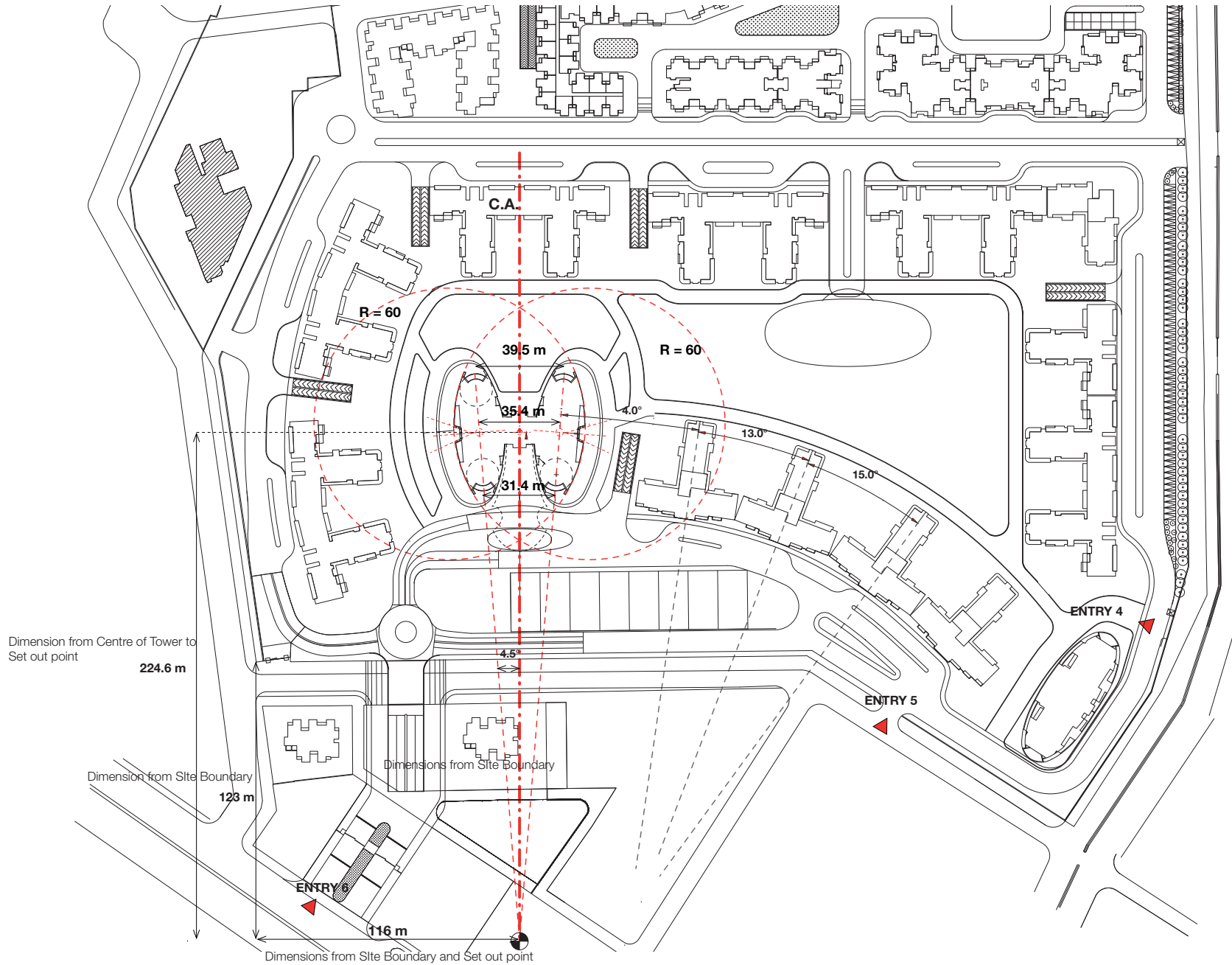
Material Layers - reference images



- 01. Curtain Wall
- 02. Balconies
- 03. Louvers
- 04. Canopy Mesh
- 05. Aluminium Panels

# Site Setting out

## Setting out of Tower within Masterplan



# Site Plan

Integration into Masterplan Landscape

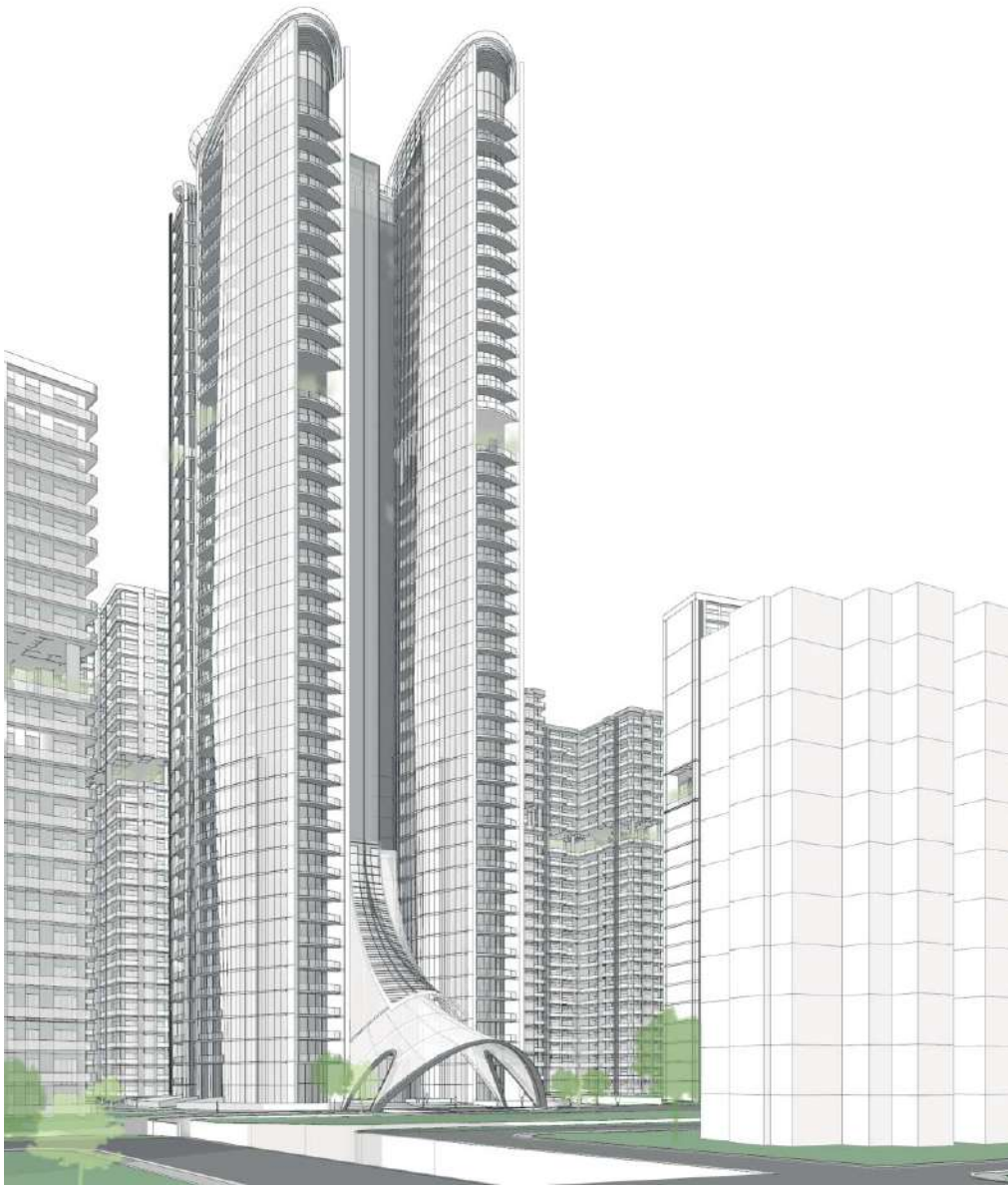


Versace Residencies

Adjacent Residential Towers



## Perspective Views

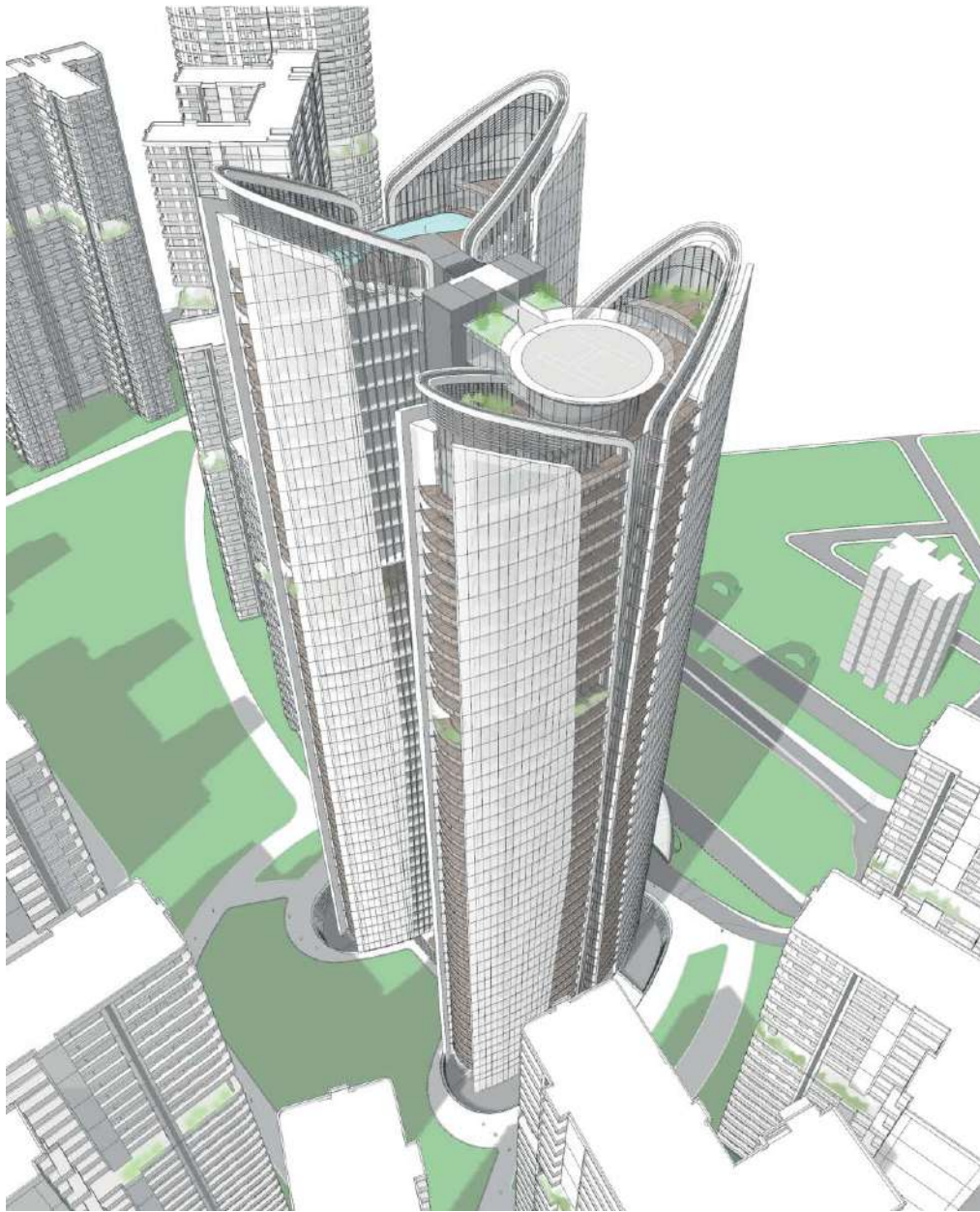


Street level view from South West

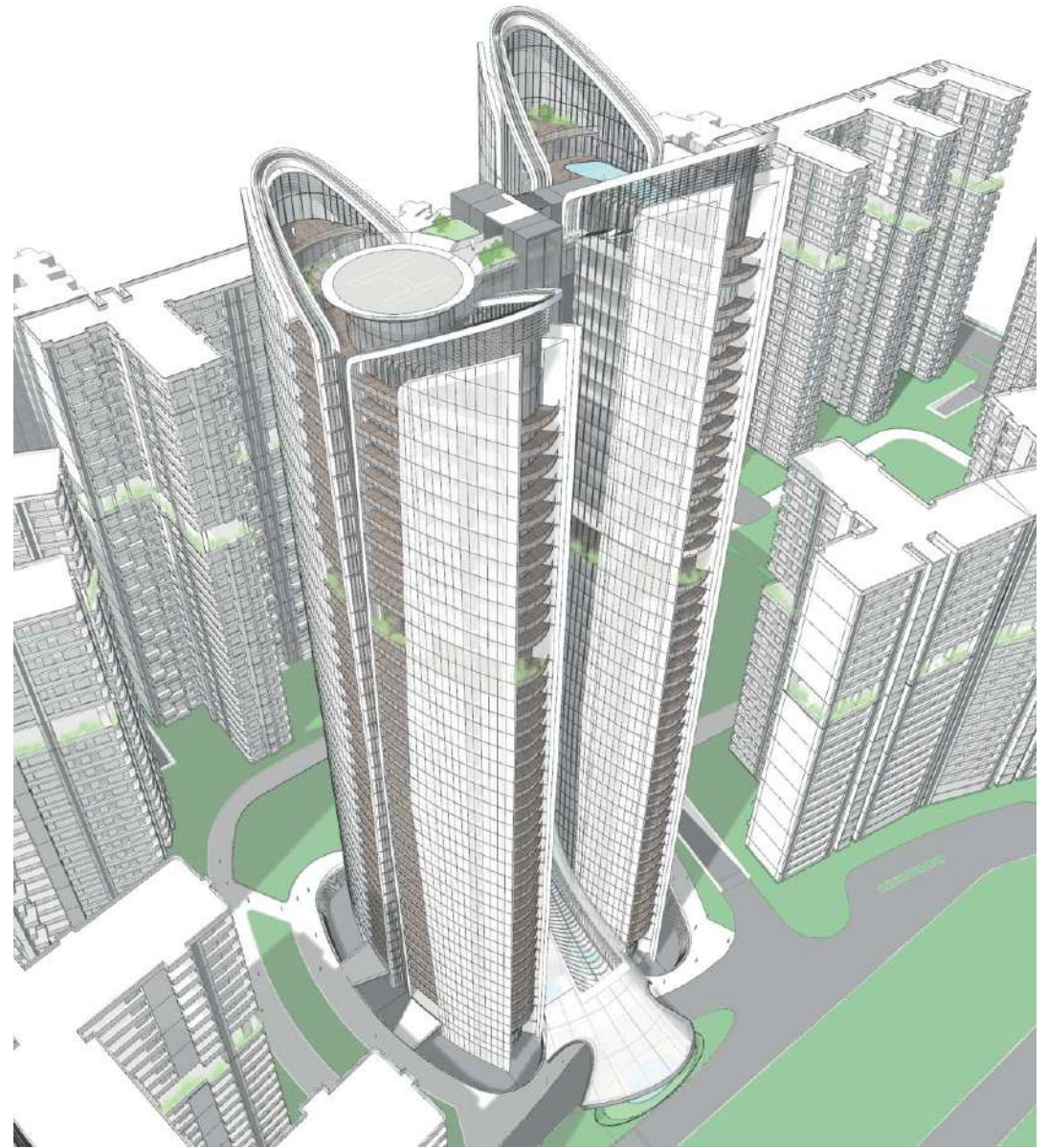


Street level view from South East





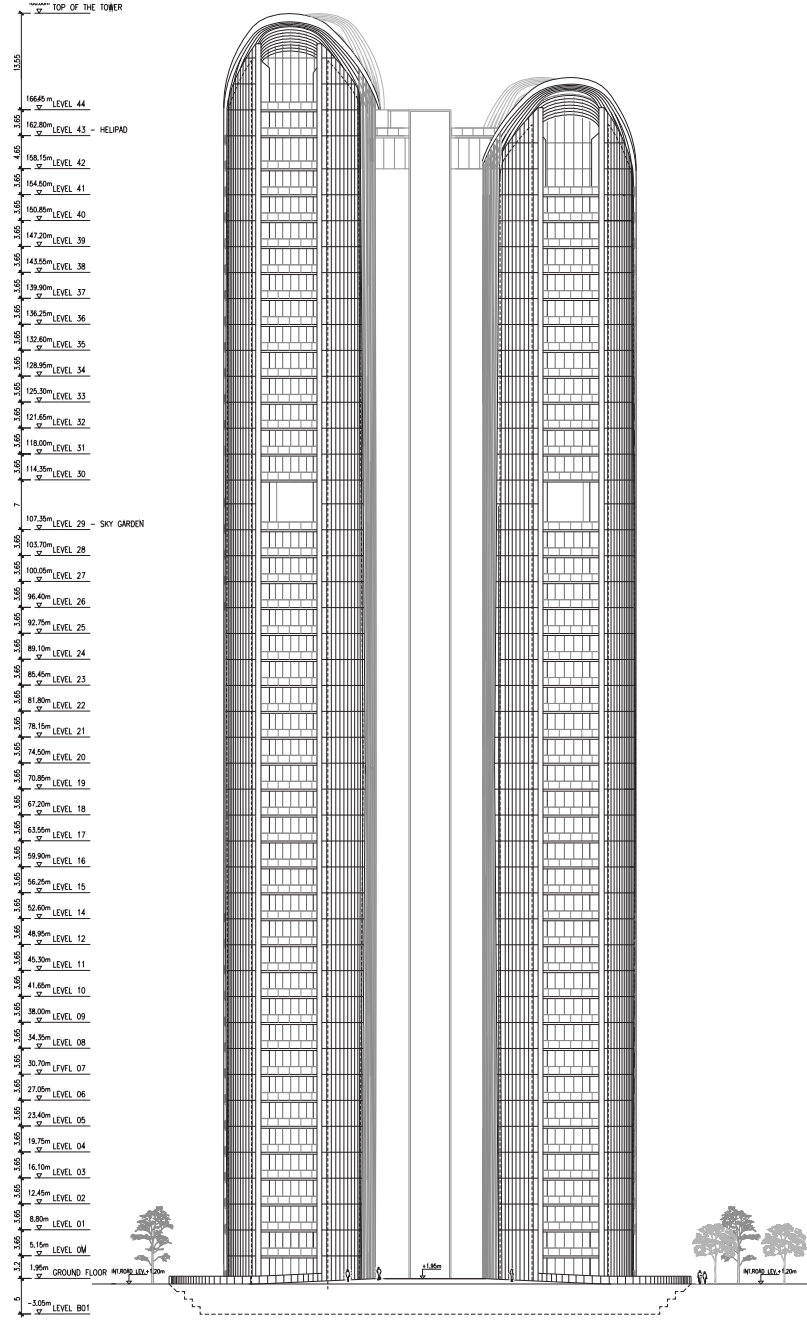
Top view from North West



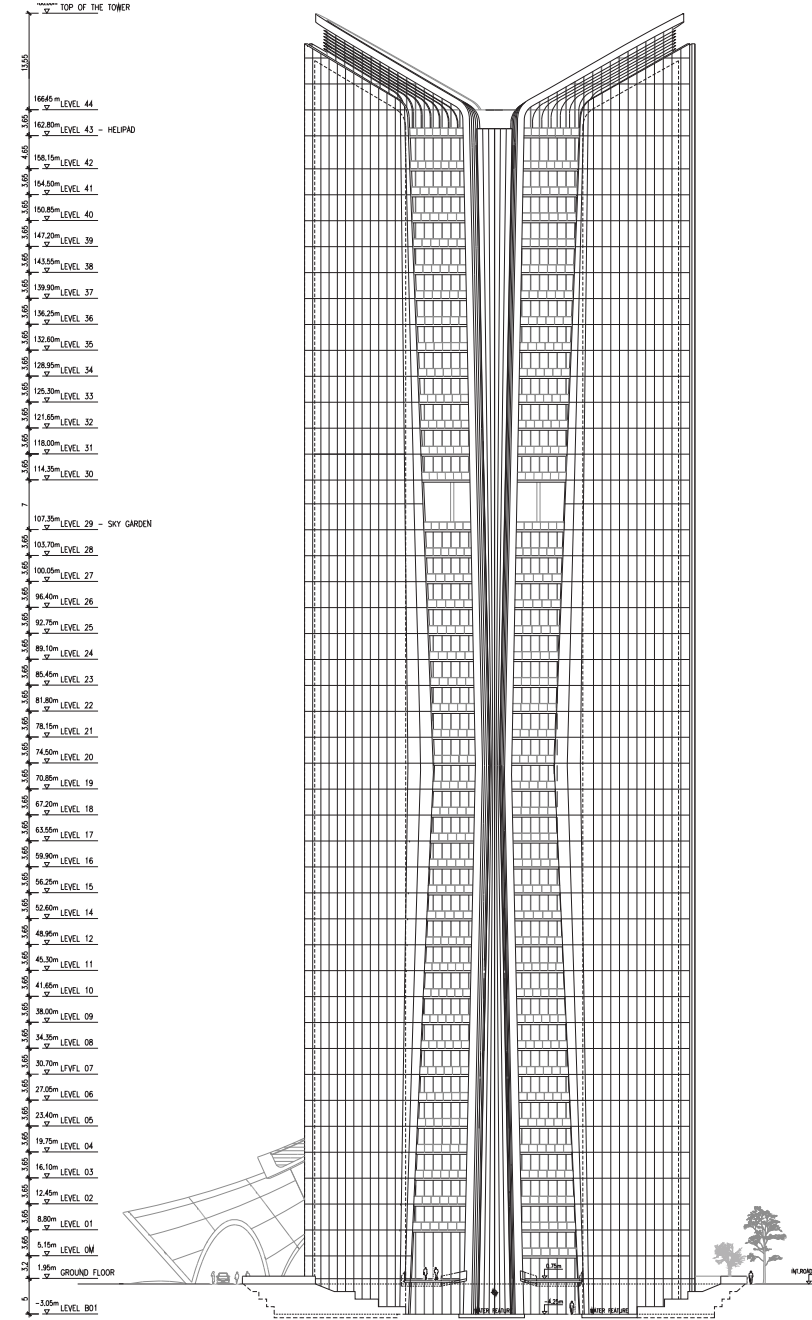
Top view from South West



# Elevations



North Elevation



East Elevation

3. ALL DIMENSIONS TO BE FIELD VERIFIED BEFORE PROCEEDING WITH WORK.
4. UHA-LONDON TO BE NOTIFIED OF ANY DISCREPANCIES IN WRITING.
5. ALL AREAS ARE INDICATIVE AND APPROXIMATE ONLY.

Legend:

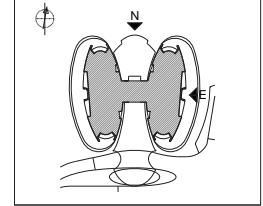
NOT FOR CONSTRUCTION

UHA PLOT DATE: 07 September 2015 14:16:21


03/09/2015 100% Concept Design

Rev Date Description

Key:



Project: **VERSACE RESIDENCES**

Location: Manharal Khurana Marg, New Delhi, India

Client:

**UNITY GROUP**

G-3, Aggarwal Corporate Tower, Plot No.-23,  
Rajendra Place New Delhi - 110 058, India.

Design Architect:

**uhalondon**  
Upton-Hansen Architects Ltd.

Executive Architect:

**gpo**  
Gian P. Mathur & Associates Pvt. Ltd.

C-65, East of Kailash  
New Delhi, India, 110065

Tel: +91 11 46906999

Structural Engineer:

Address -city/state - Country- Misc. Info

Energy/Comfort Consultant and M.E.P. Engineers:

Address -city/state - Country- Misc. Info

Local Engineer: Structural, Mechanical, Civil:

Address -city/state - Country- Misc. Info

Phase: Concept Design

Title:  
**ELEVATION  
NORTH & EAST**

Proj. Nr.: 131002

Drawn: DA/GN/AL

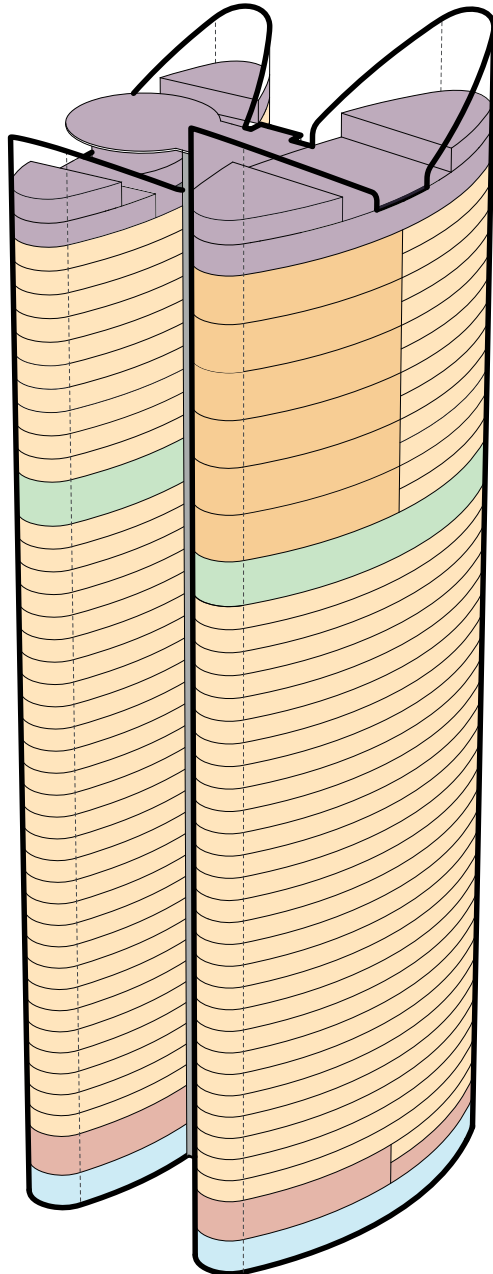
Checked: JUH/RM

Size: A0

SCALE: (1:250)

# Proposed Amenities

Location



LOWER GROUND FLOOR		
Amenities:	Notes:	Target area
SPA		
Treatment rooms	Male, female and couples treatment	
Changing room	Male and female	
Sauna, Hamman and Steam Rooms	Could include a variety of different types	
Consultation Rooms	Private training rooms	
Relaxation Lounge	Room with couches and TV 's to watch sports events	
Aqua Gym/ Aquaerobic	Special equipment, Pool	
Consultation rooms	Dietitian, Acupuncture, Herbalist, Chiropractor, Reflexology etc...	
Lap pool		
Hair Dressing Salon		
Changing rooms	Lockers, showers etc.	
Juice Bar		
Access to exterior jogging		
Washrooms		
Laundry Service		
Security Control Room		

RESIDENTIAL FLOORS		
Amenities:	Notes:	Target area
5 BHK Apartment		
Duplex Unit		

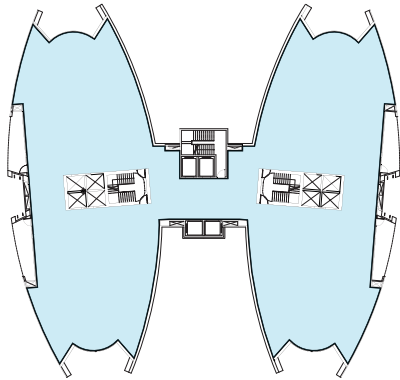
SKYGARDEN		
Amenities:	Notes:	Target area
Relaxation lounges		
Variety of pools and hot tubs	Cold, warm, hot	
Meditation / Yoga room	Space should open up to terrace / garden	
Zen garden		
Aromatic garden		
Café with Library	Easy reading, relaxation	
Crèche	Kids Room	Age 1-5 yrs.
GYM		
Cardio Room	Treadmills, VFX, rowing, step etc	
Weights Room		
Stretching Area		
Classrooms	Spinning, Pilates, dancing etc	
Table Tennis room		
Golf Simulation Room	Simulator	Approx. 35m2
Cricket Simulation Room	Simulator	
Washrooms		
Private Viewing Room / Cinema	Small Cinema room for special screenings (such as sports events, etc)	

GROUND FLOOR		
Amenities:	Notes:	Target area
Double Height Entrance Lobby		
Drop-Off	Covered drop-off	
Reception	Reception area with concierge	
Waiting lounge and guest area	Seating for guest	
Mail Room		
Gallery / Display space	Space for display art	
Versace History and display	Versace Memorabilia zone with historical dresses, photos etc and display of art	
Business Centre	Meeting rooms, printing and Video conferencing facilities	
Coffee Lounge		
Cafeteria		
Washrooms		

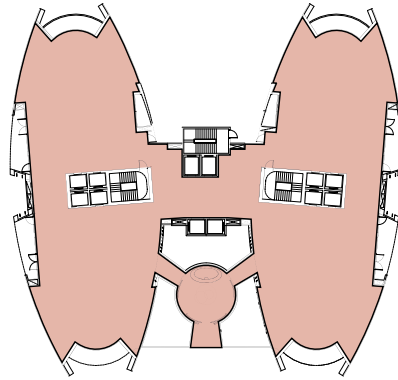
TOP FLOORS		
Amenities:	Notes:	Target area
Cocktail Bar	In proximity to pool and external terraces.	
VIP Cigar Lounge	Potential for whisky bar	
Games Room	Connected to Cigar lounge	
Pool / Snooker Room	Connected to Games room and cigar lounge	
'High Tea' lounge / Cafe	Luxury lounge to enjoy classic British 'High tea' or coffee	} CAN BE CLUBBED TOGETHER
Reading room / library	Place to read newspaper, magazines etc. Should offer free WI-FI	
Signature Restaurant	Possibility for feature restaurant with celebrity chef	
Private dining room(s)	Part of restaurant	
Live Music / Piano area	Raised area for piano	
Event Spaces for hire	Mid-sized spaces for VIP events	150-200 pax
Washrooms	Strategically placed to	
Kitchen	Kitchen will need to cater to both restaurant, bar, event spaces and lounge areas. Will need direct access to service elevators. Should potentially accommodate different types of cuisines (sushi, Asian fusion, etc)...	
BOH	Staff areas, storage, laundry etc...	
Helipad	Direct access to clubhouse amenities.	
External 'sky' terraces and observation areas	Could be a range of terraces linked to the various amenities with ranging degrees of privacy	
Infinity pool	Pool should be in direct proximity to cocktail bar and deck.	
Pool deck with cabanas and loungers	Should have both shaded and exposed areas. Should have covered area for use during monsoon areas	
DJ booth	In proximity to cocktail bar and pool areas	
Changing rooms	Must be situated with direct access to pool area. Must be separate from restaurant and lounge areas	

# Programs

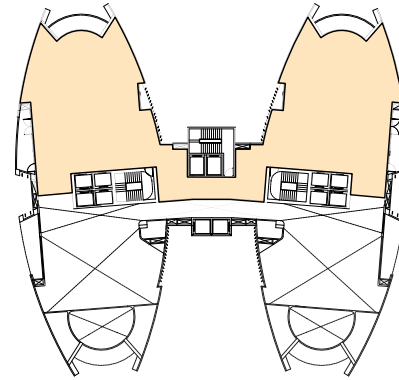
Programmatic distribution



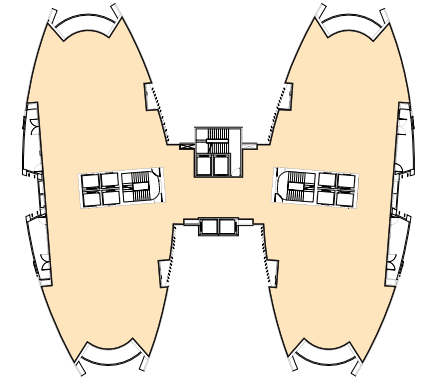
Lower Ground Floor



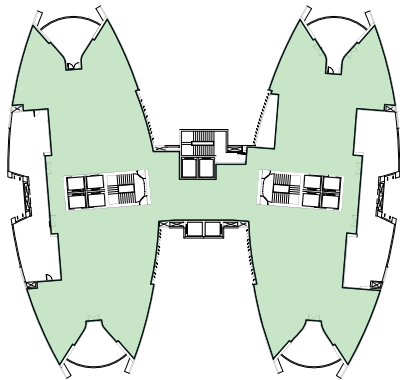
Ground Floor / Lobby Entrance



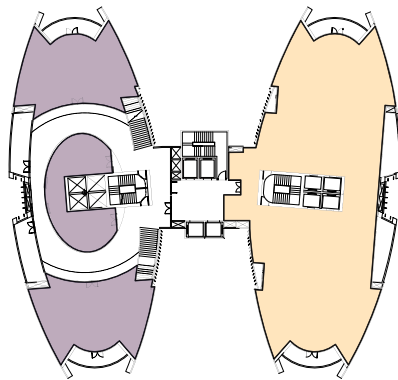
Mezzanine \_ 0.5 Residential Level



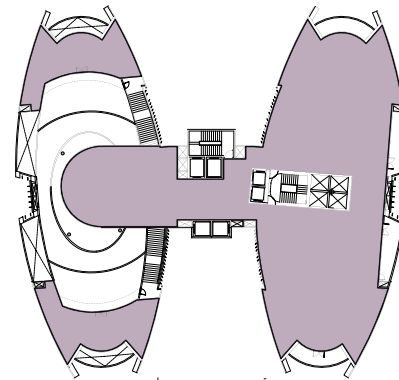
Residential Floors / Levels 1-28 and 30-41



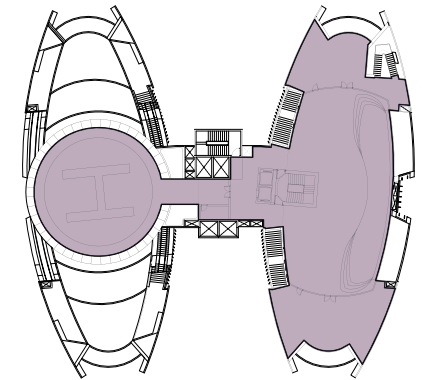
Skygarden Floor / Level 29



Amenity Floor / Residential Floor - Level 41



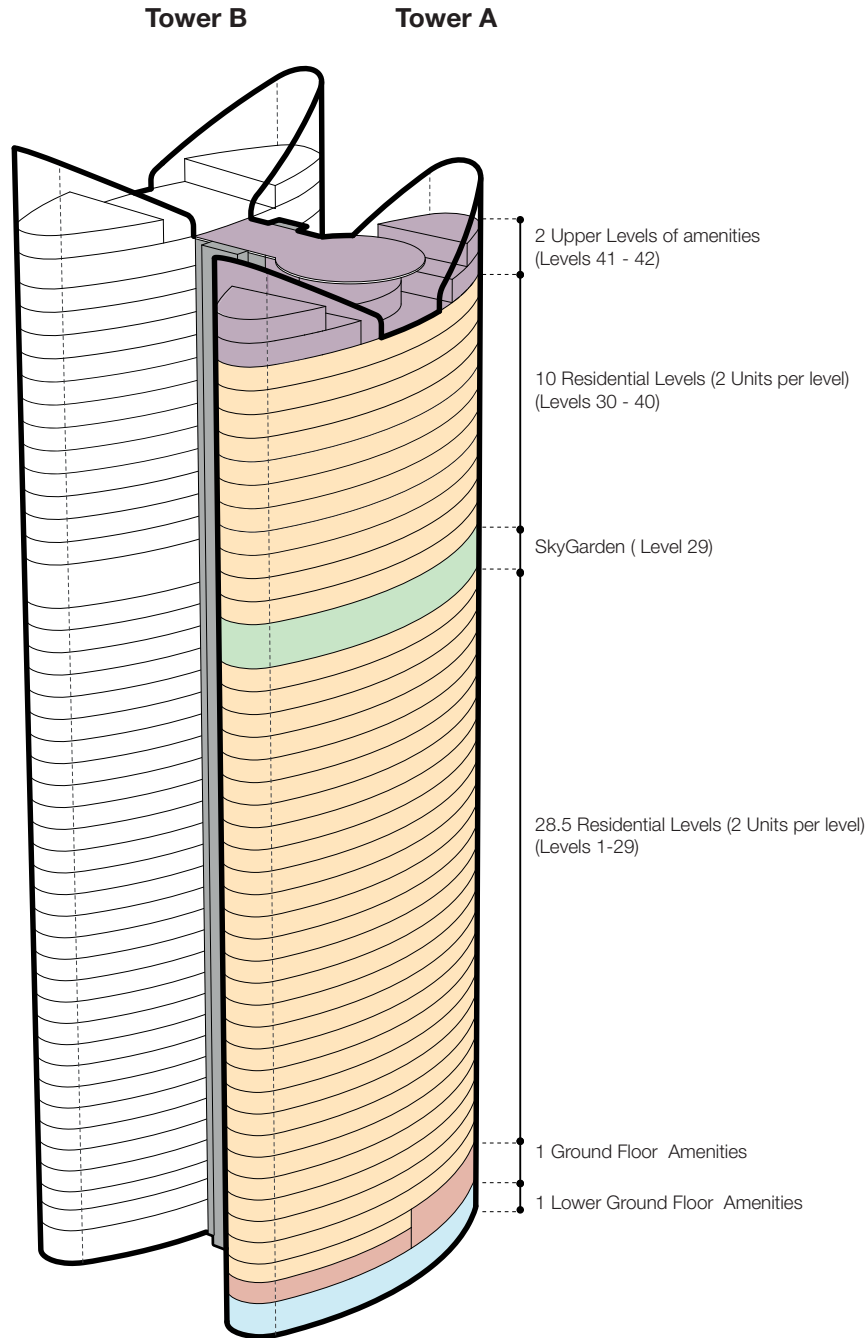
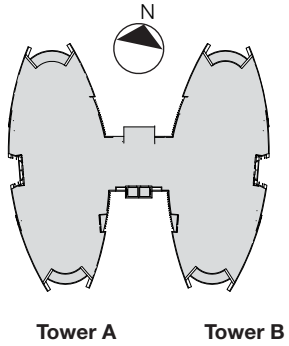
Level 42 - Amenities



Helipad level and Terrace Floor Amenities / Level 43

# Programmatic Massing

Tower A and Tower B programmatic distribution



- Amenities / Upper levels
- Single floor 5 BHK Apartments
- Skygarden / Amenities
- Ground Floor Main Lobby
- Lower Ground Level Amenities

## Tower A

Total Height: +171m  
 Total No. Levels = 44  
 No. Apartment Levels = 38,5  
 No. Amenities levels = 4

5 BHK Apartments = 77

**Sub Total Apartments = 77**

### Residential Floors

Level Mezzanine (0,5 Level) = 1 Unit  
 Level 01-28 (27 Levels) = 54 Units  
 Level 30-40 (11 levels) = 22 Units

### Ground Floor

Reception / Lobby  
 Business Lounge  
 Business Centre

### Lower Ground Floor

SPA facilities

### Skygarden floor

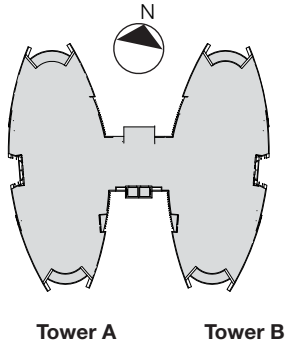
Gardens  
 GYM facilities

### Top Amenity Floors

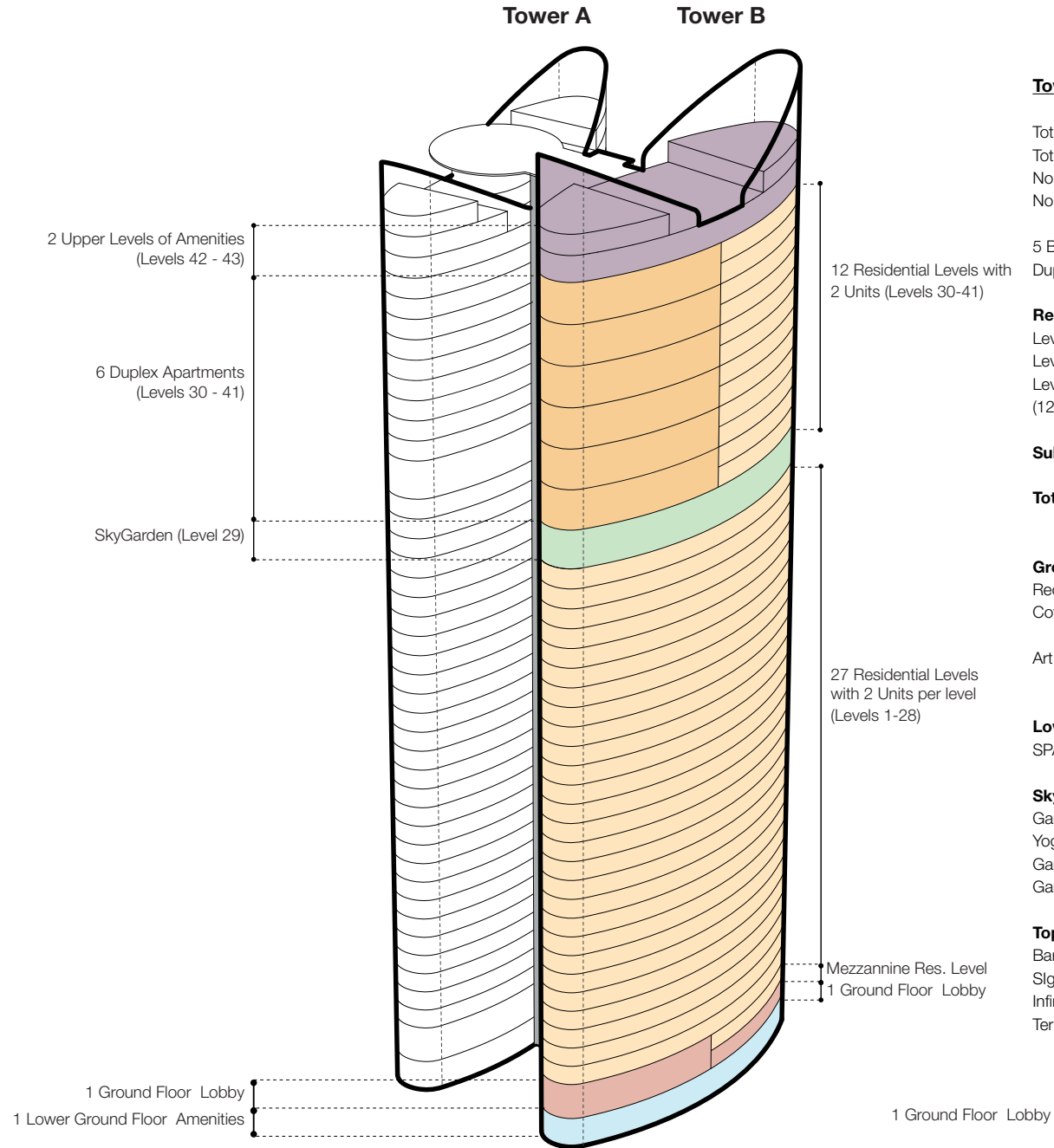
Library  
 Event Space  
 VIP Lounge  
 Infinity Pool  
 Game Rooms  
 Terraces

# Programmatic Massing

Tower A and Tower B programmatic distribution



- Amenities /Top levels
- Single floor 5 BHK Apartments
- Duplex Apartments
- Skygarden / Amenities
- Ground Floor Main Lobby
- Lower Ground Level Amenities



## Tower B

Total Height: +180m  
 Total No. Levels = 45  
 No. Apartment Levels = 39.5  
 No. Amenities levels = 4

5 BHK Apartments = 67  
 Duplex Apartments = 6

### Residential Floors

Level Mezzanine (0.5 Level) = 1 Unit  
 Level 01-28 (27 Levels) = 54 Units  
 Level 30-41 (12 Levels) = 18 Units  
 (12 Single + 6 Duplex)

**Sub Total Apartments = 73**

**Total Apartments ( Tower A+B)= 150**

### Ground Floor

Reception / Lobby  
 Coffee Lounge

Art Gallery /Versace Display Space

### Lower Ground Floor

SPA facilities

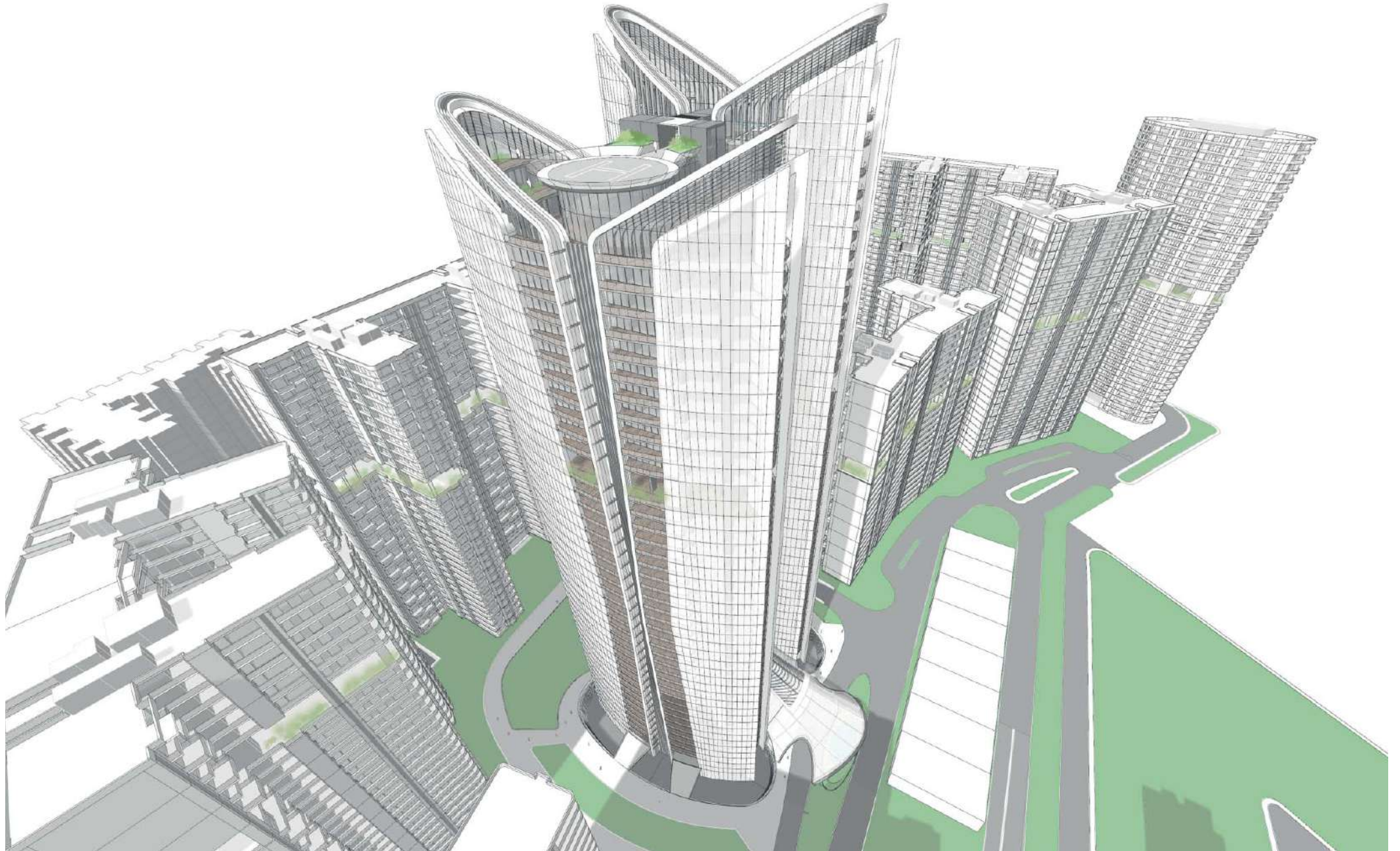
### Skygarden floor

Gardens  
 Yoga facilities  
 Game Simulation Rooms  
 Game Rooms

### Top Amenity Floors

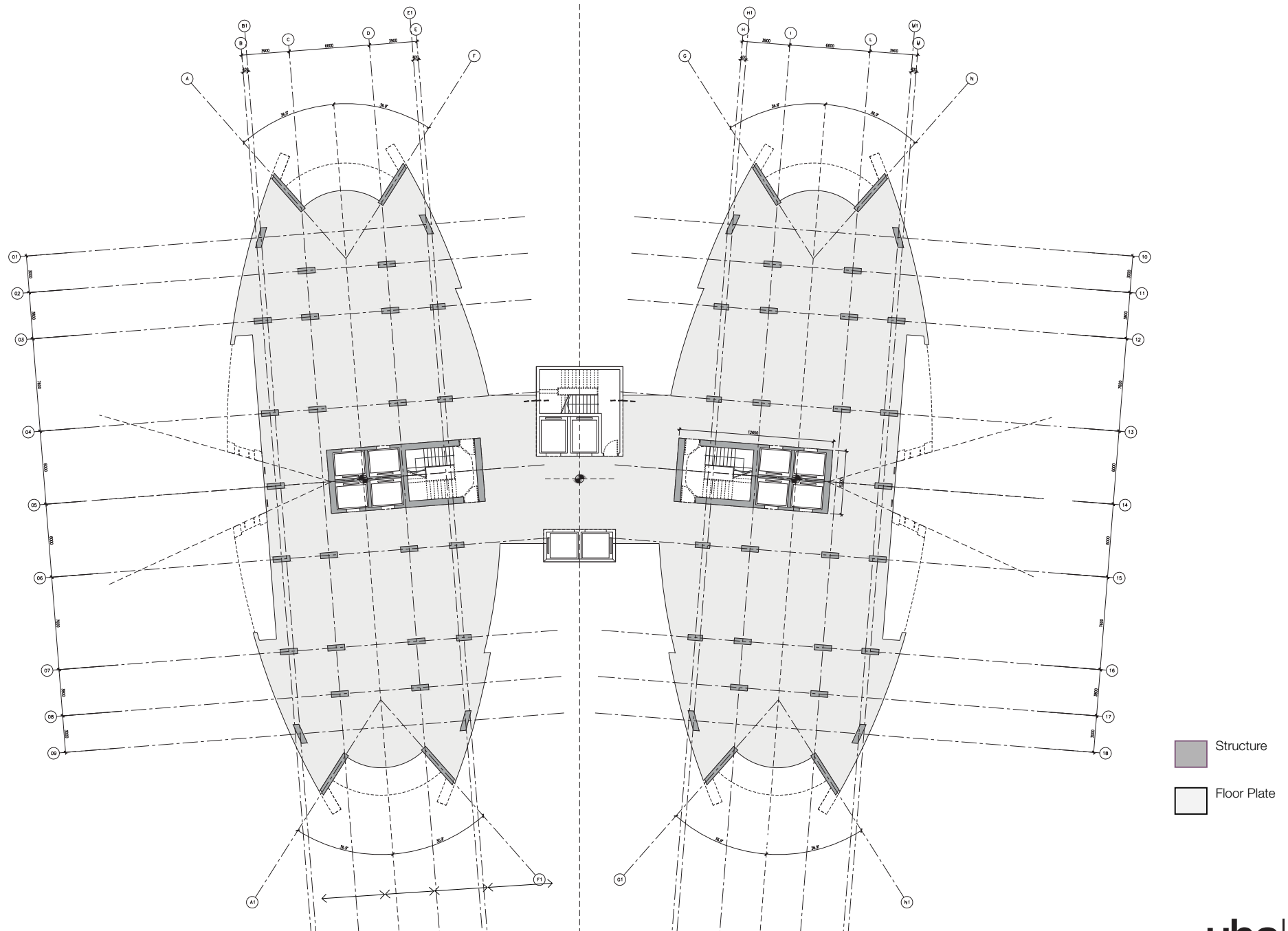
Bar (cocktail bar / VIP bar)  
 Signature Restaurant and facilities  
 Infinity Pool  
 Terrace

Top View South - East





Plan  
UHA Column Grid



- Structure
- Floor Plate

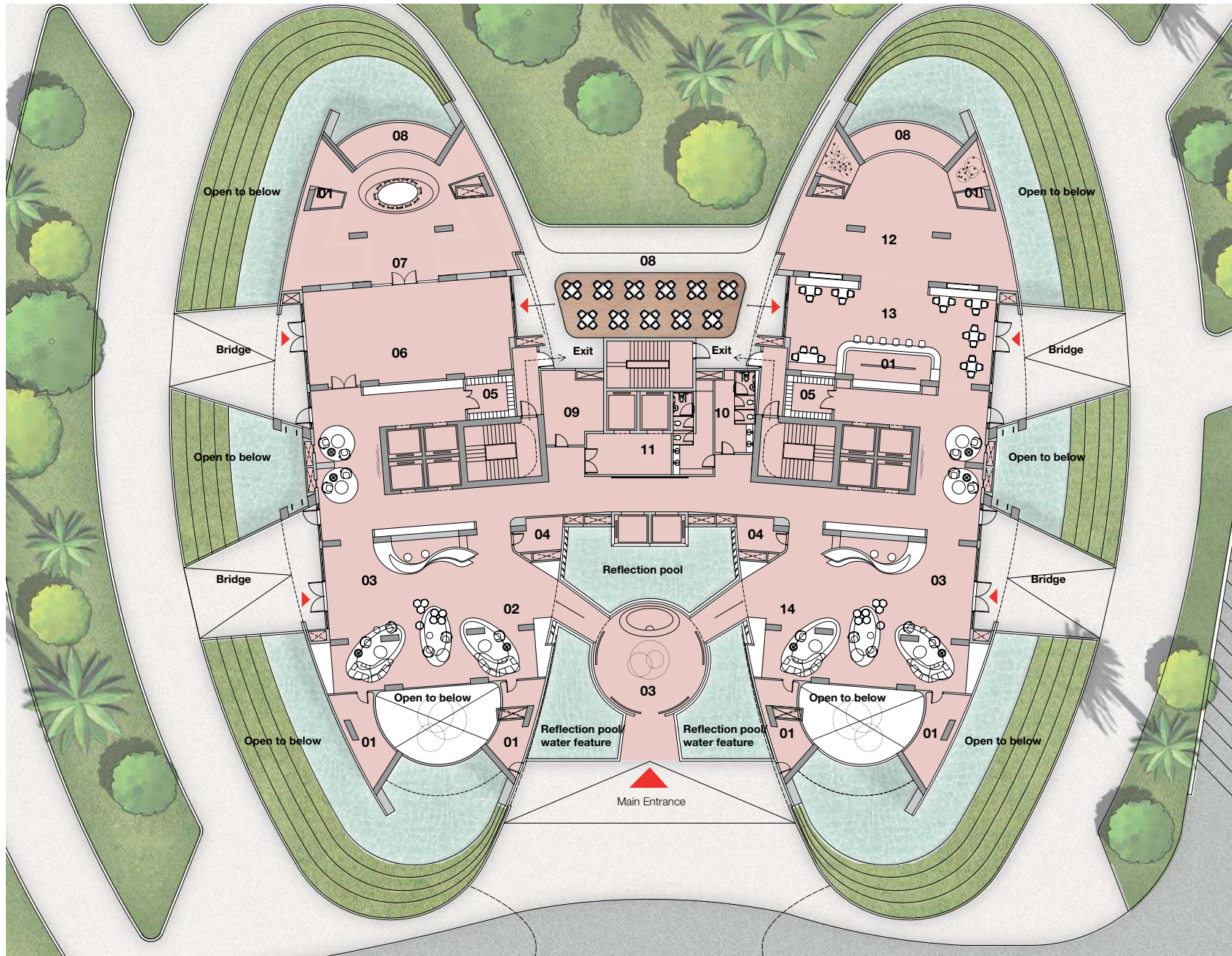
**A Grand Arrival**  
Vehicular drop-off /Extended Canopy



A Grand Arrival  
Reference images



# Ground Floor Plan Level + 1.95m



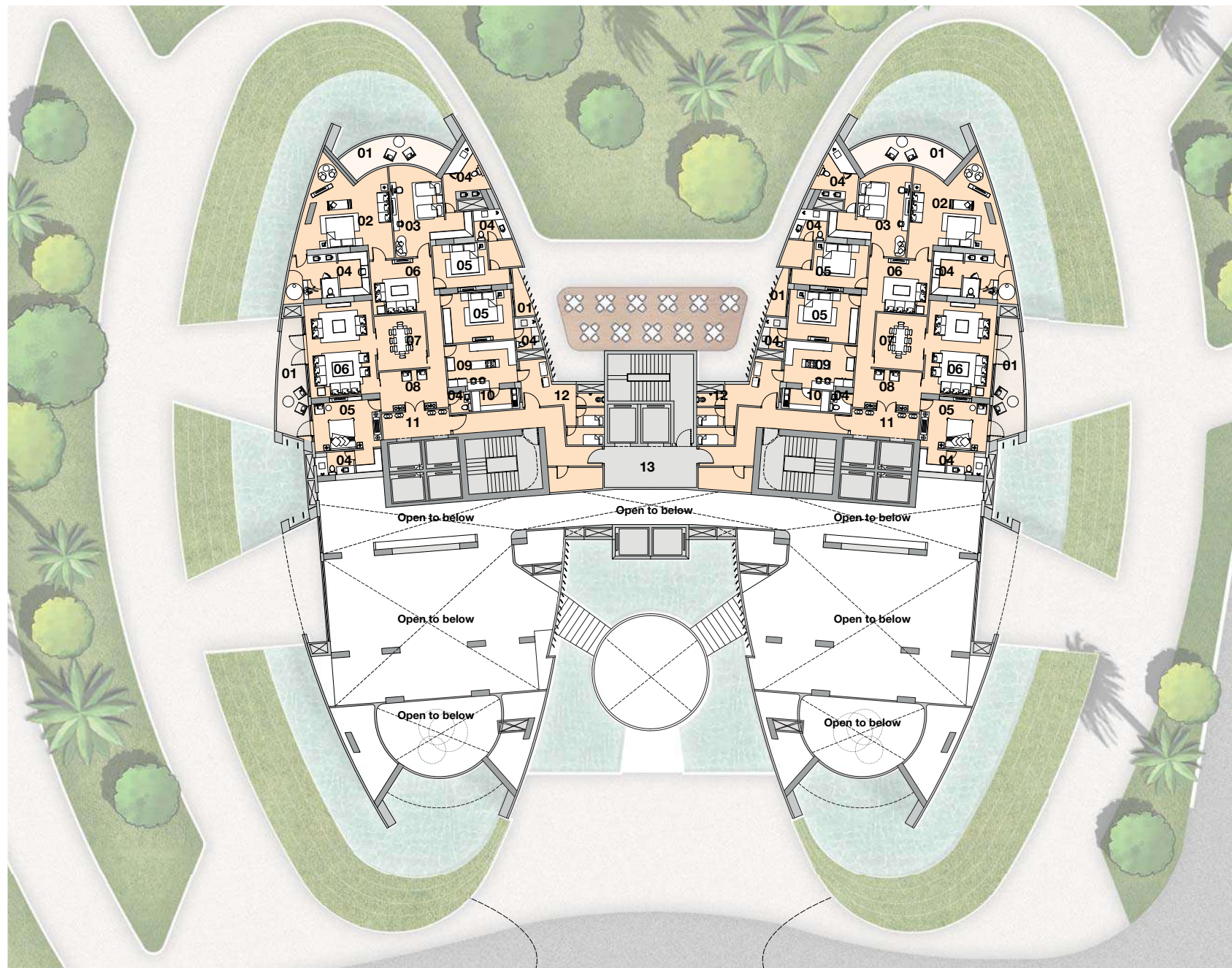
- 01. BOH
- 02. West Lobby
- 03. Reception / Concierge
- 04. Staff BOH
- 05. Mail Room
- 06. Business Lounge
- 07. Business Centre
- 08. Terrace
- 09. Fire Control Room
- 10. Washrooms
- 11. Service Lobby
- 12. Art Gallery / Display Space
- 13. Coffee / Lounge
- 14. East Lobby

## Amenities

Carpet Area = 1274 m2

Balcony / Terraces = 67 m2

# Mezzanine Plan Level +5.15m



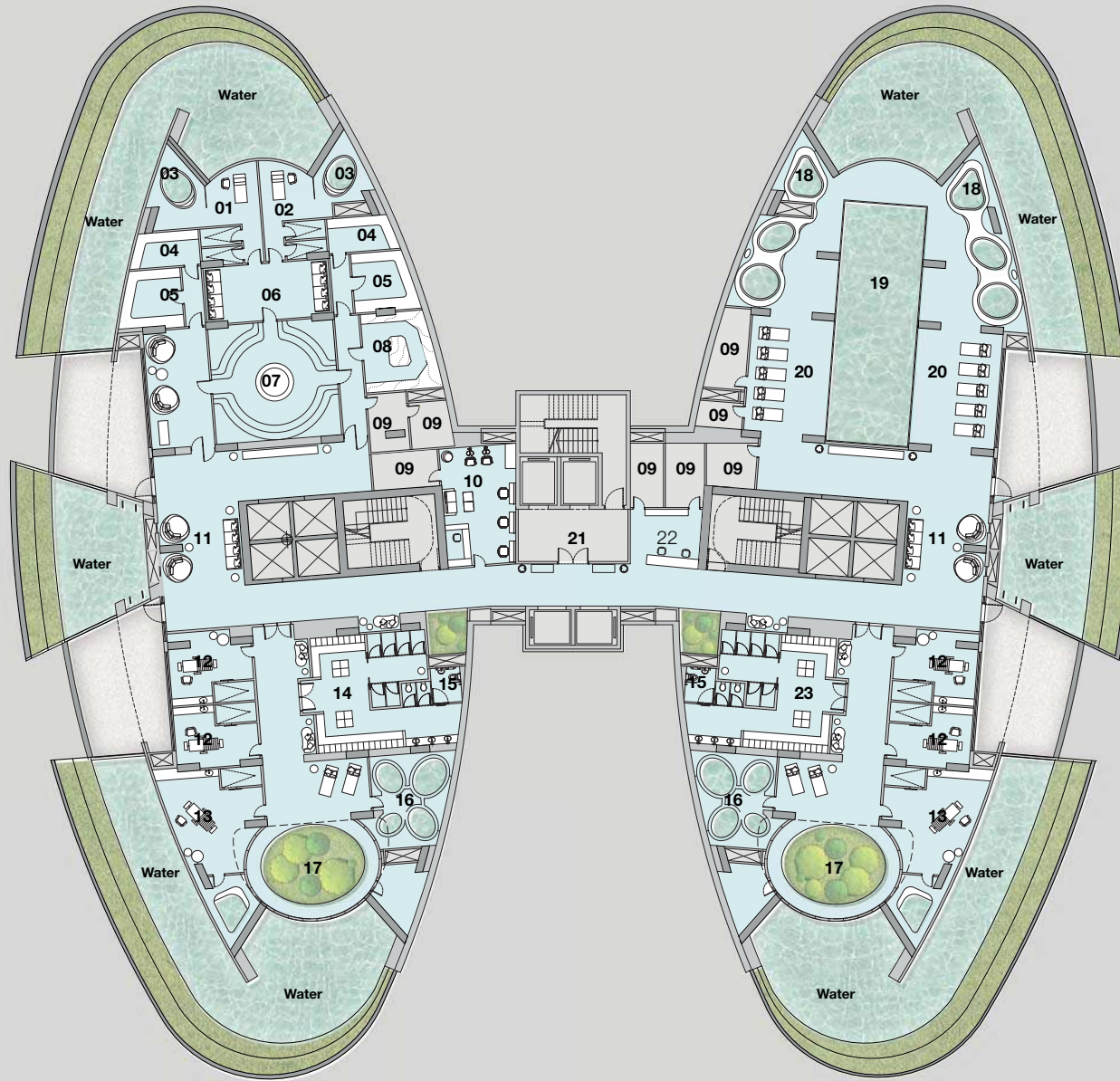
- 01. Balcony
- 02. Master Bedroom
- 03. Children's Bedroom
- 04. Washrooms
- 05. Bedroom
- 06. Living Area
- 07. Dining Area
- 08. Foyer
- 09. Kitchen
- 10. Utility
- 11. Private Lift Lobby
- 12. Servant Apartments
- 13. Service Lobby

## Amenities

Carpet Area = 761 m<sup>2</sup>

Balcony / Terraces = 83 m<sup>2</sup>

# Lower Ground Floor Plan Level -3.05 m



- 01. Scrub Room Female
- 02. Scrub Room Male
- 03. Tub
- 04. Steam
- 05. Sauna
- 06. Unisex Lounge
- 07. Unisex Hammam
- 08. Pink Hammam
- 09. BOH
- 10. Hair Dressing Salon
- 11. Waiting Lounge
- 12. Treatment Room
- 13. Vip Treatment Room
- 14. Female Changing Room
- 15. Washrooms
- 16. Relaxation Pods
- 17. Garden
- 18. Vitality Pods + Tubs
- 19. Long Lap Pool
- 20. Relaxation Area
- 21. Service Lobby
- 22. Reception
- 23. Male Changing Room

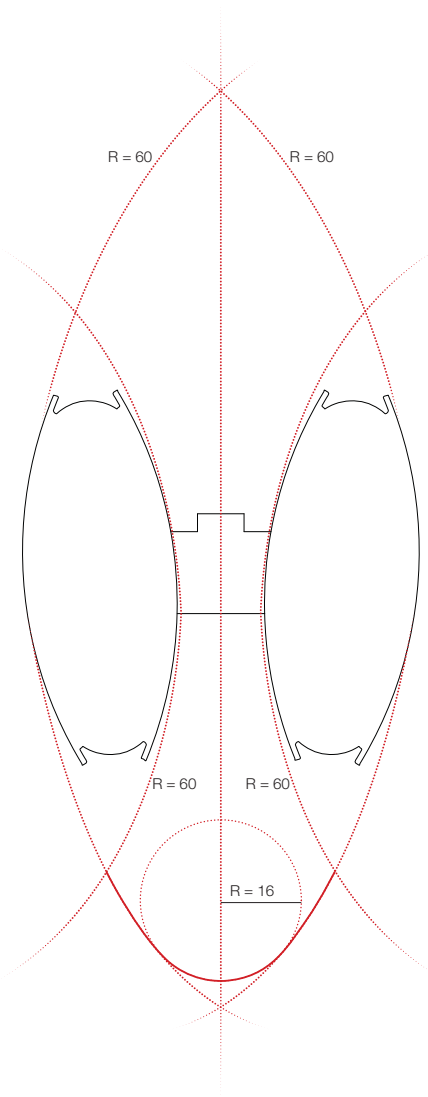
## Amenities

Carpet Area = 1369 m2

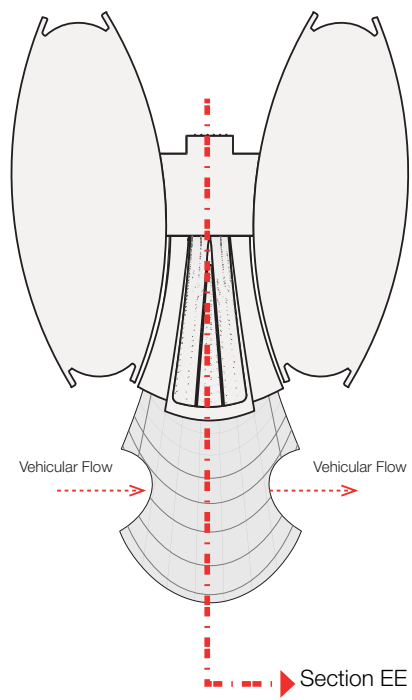
Balcony / Terraces = 188 m2

# Entrance Canopy

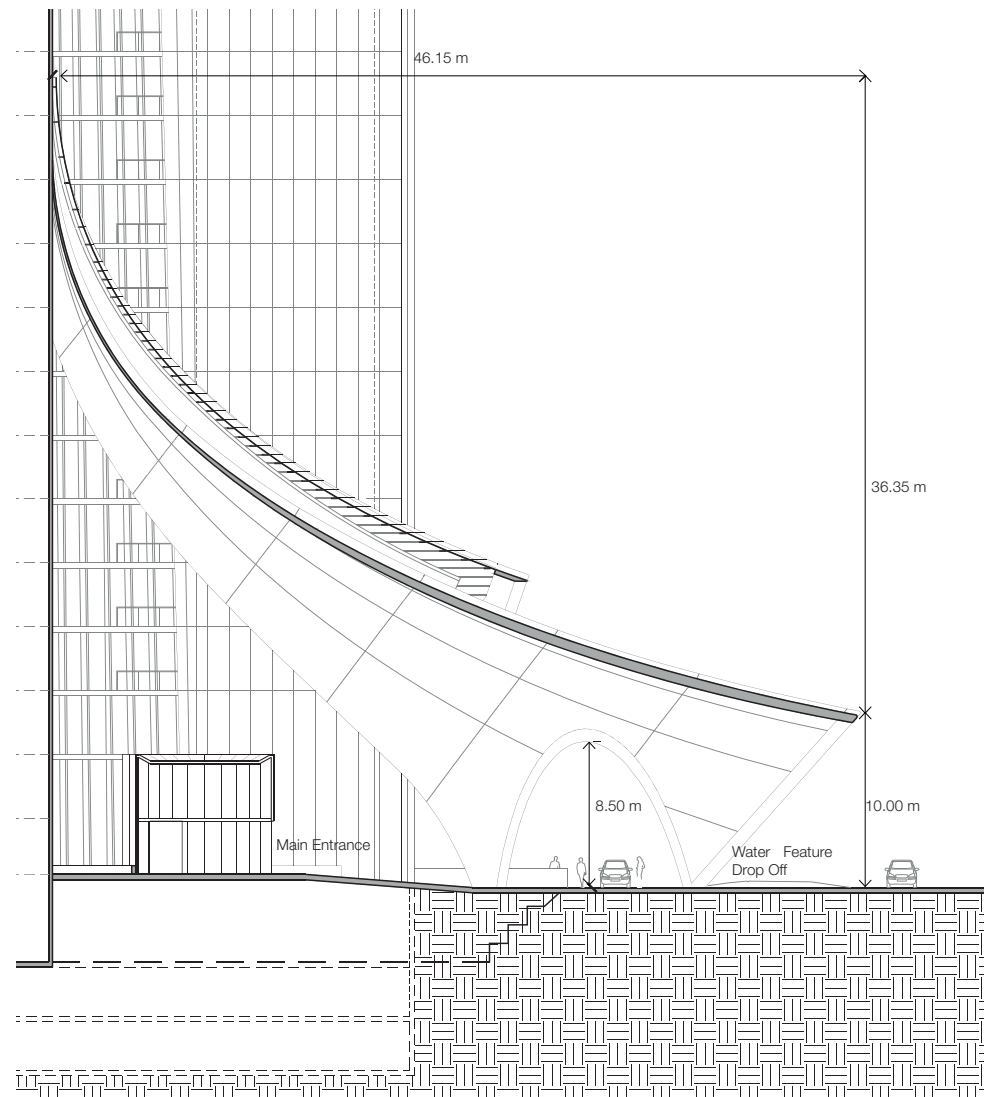
## Design Development



Geometric Relationship between canopy and Tower

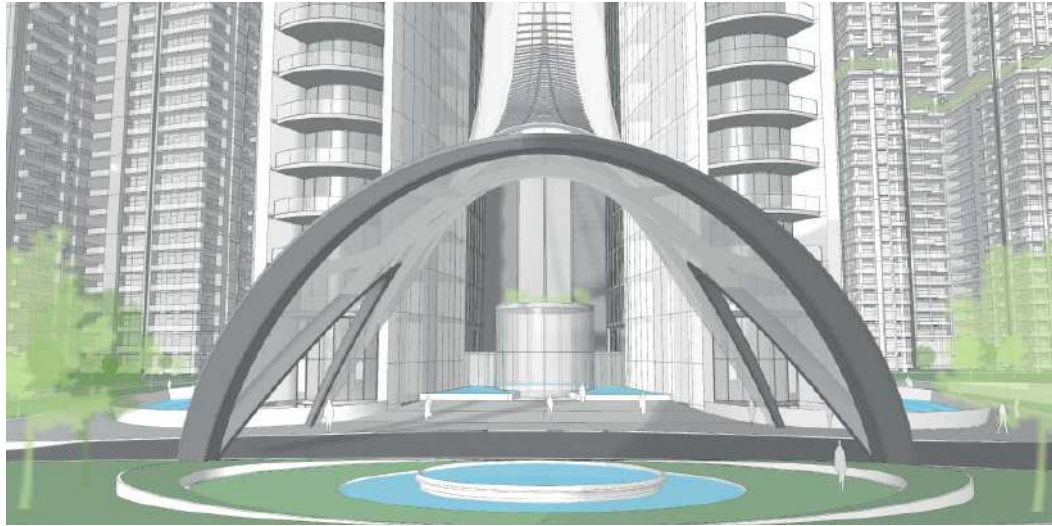


Ground level openings allow unobstructed vehicular flow on the drop off



Section EE  
Section Detail of the Main entrance from West to East

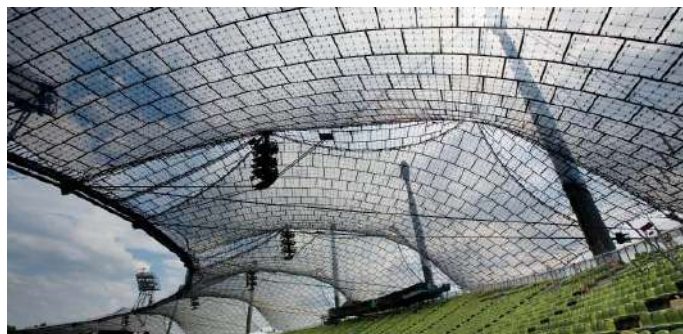
# Perspective Views



View from South / Drop-off with water feature



View from Grand Entrance Drop-off

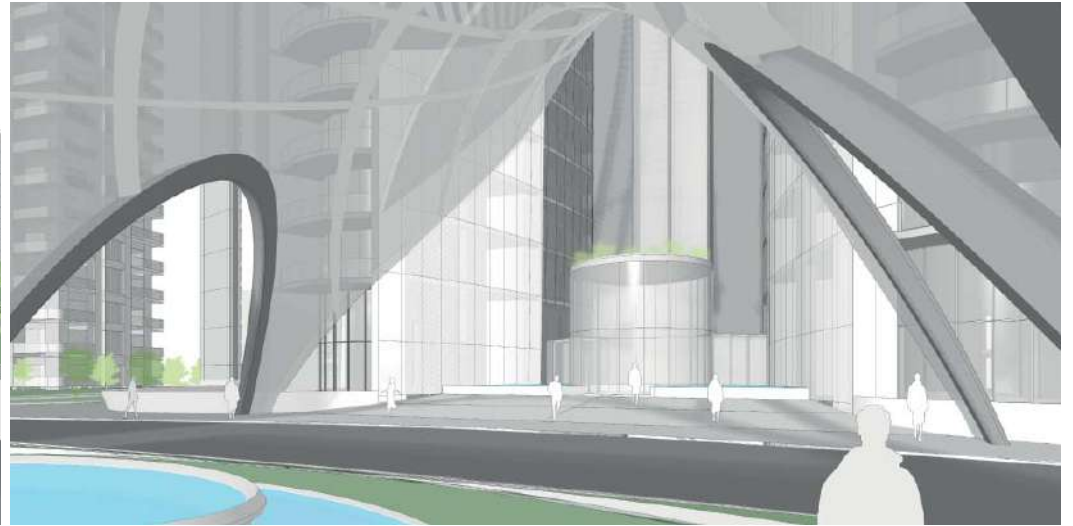




# Perspective Views



View from North East / Entrance from Park



View from below Entrance Canopy

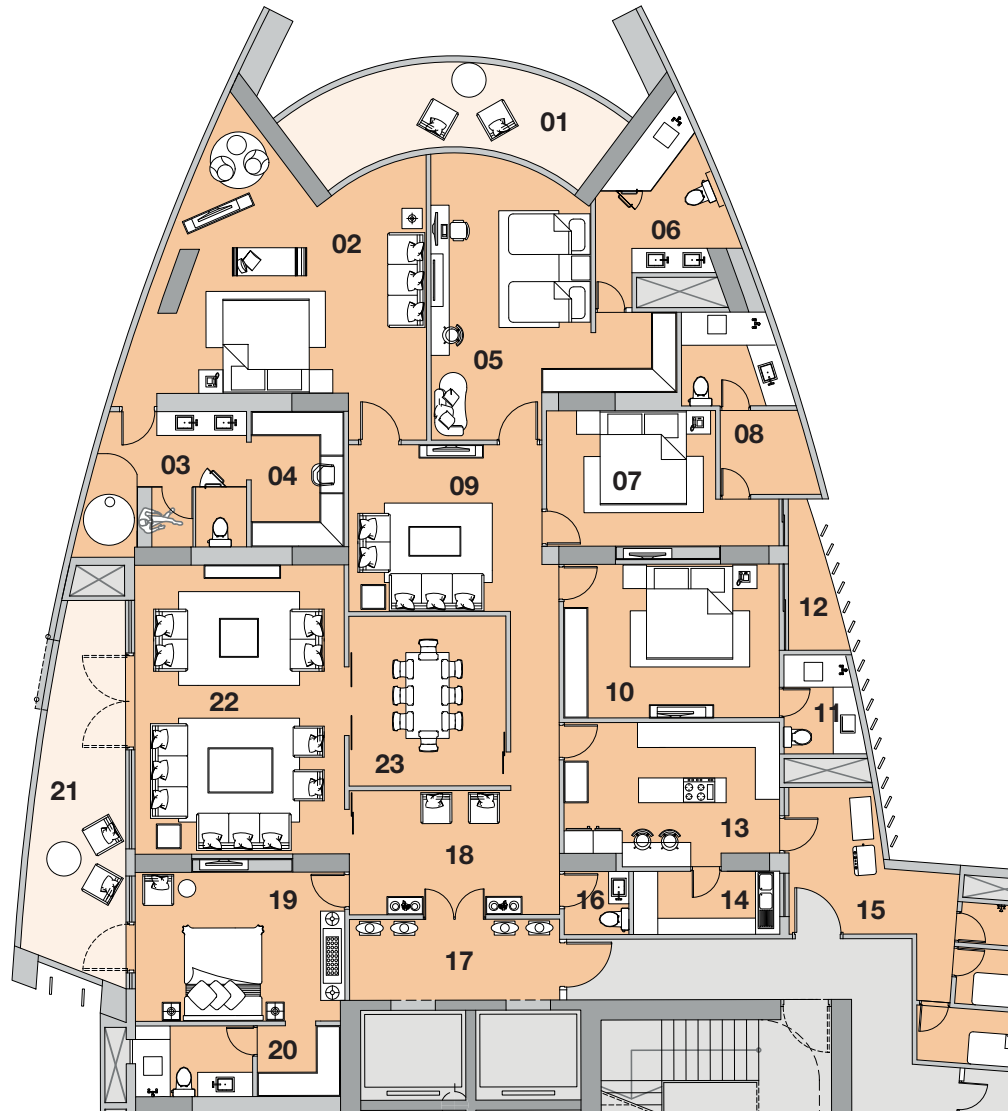


## Residential Levels



# Apartment Plan / Areas & Room Sizes

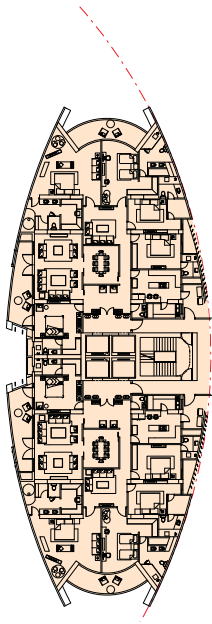
5 BHK Apartment (UHA)



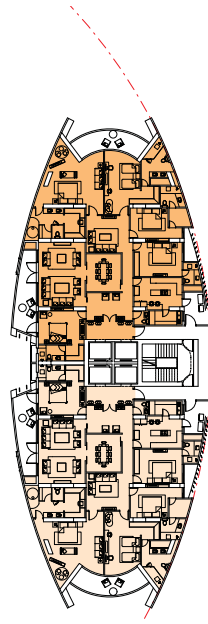
- |  |   |
|--|---|
| 01. Balcony<br>2.1 x 6.8m (14.3m <sup>2</sup> )            | 19. Bedroom 01<br>3.6x 5.1m (18.4m <sup>2</sup> )       |
| 02. Master Bedroom<br>7.7 x 6.4m (45.0m <sup>2</sup> )     | 20. En-Suite + Dress<br>1.8 x 5.1m (9.0m <sup>2</sup> ) |
| 03. En-Suite<br>3.4 x 3.4m (7.9m <sup>2</sup> )            | 21. Balcony<br>8.9 x 2.6m (23.4 m <sup>2</sup> )        |
| 04. Walk in Wardrobe<br>2.3 x 3.4m (7.9m <sup>2</sup> )    | 22. Living Area<br>7.2 x 5.2m (37.5m <sup>2</sup> )     |
| 05. Children's Bedroom<br>3.7 x 5.1m (18.9m <sup>2</sup> ) | 23. Dining Area<br>3.9 x 4.2m (16.4m <sup>2</sup> )     |
| 06. En-Suite<br>4.5 x 3.8m (17.1m <sup>2</sup> )           |   |
| 07. Bedroom 02<br>3.4 x 5.6m (19m <sup>2</sup> )           |   |
| 08. En-Suite + Dress<br>4.5 x 2.8m (11.2m <sup>2</sup> )   |   |
| 09. Tv Room<br>4.7 x 4.1m (19.3m <sup>2</sup> )            |   |
| 10. Bedroom 03<br>5.5 x 3.9m (20.9m <sup>2</sup> )         |   |
| 11. En-Suite<br>2.4 x 2.0m (4.8m <sup>2</sup> )            |   |
| 12. Balcony<br>3.7 x 1.5m (5.6m <sup>2</sup> )             |   |
| 13. Kitchen<br>5.3 x 3.6m (19.0m <sup>2</sup> )            |   |
| 14. Utility<br>1.8 x 4.0m (8.0m <sup>2</sup> )             |   |
| 15. Utility Balcony<br>3.5 x 4.1m (14.4m <sup>2</sup> )    |   |
| 16. Toilet<br>1.5 x 1.5m (2.3m <sup>2</sup> )              |   |
| 17. Lift Lobby<br>5.2 x 2.1m (10.4m <sup>2</sup> )         |   |
| 18. Entrance Lobby<br>5.1 x 3.2m (16.4m <sup>2</sup> )     |   |

# Area Table

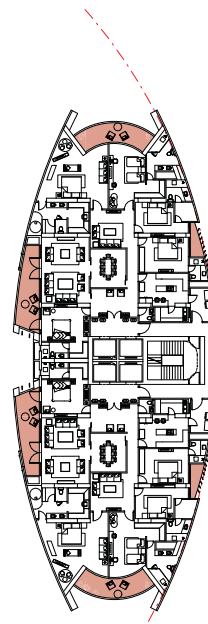
Typical Residential floor



Buildable Area - 904 m2



One 5BHK Apartment  
Carpet Area - 344 m2



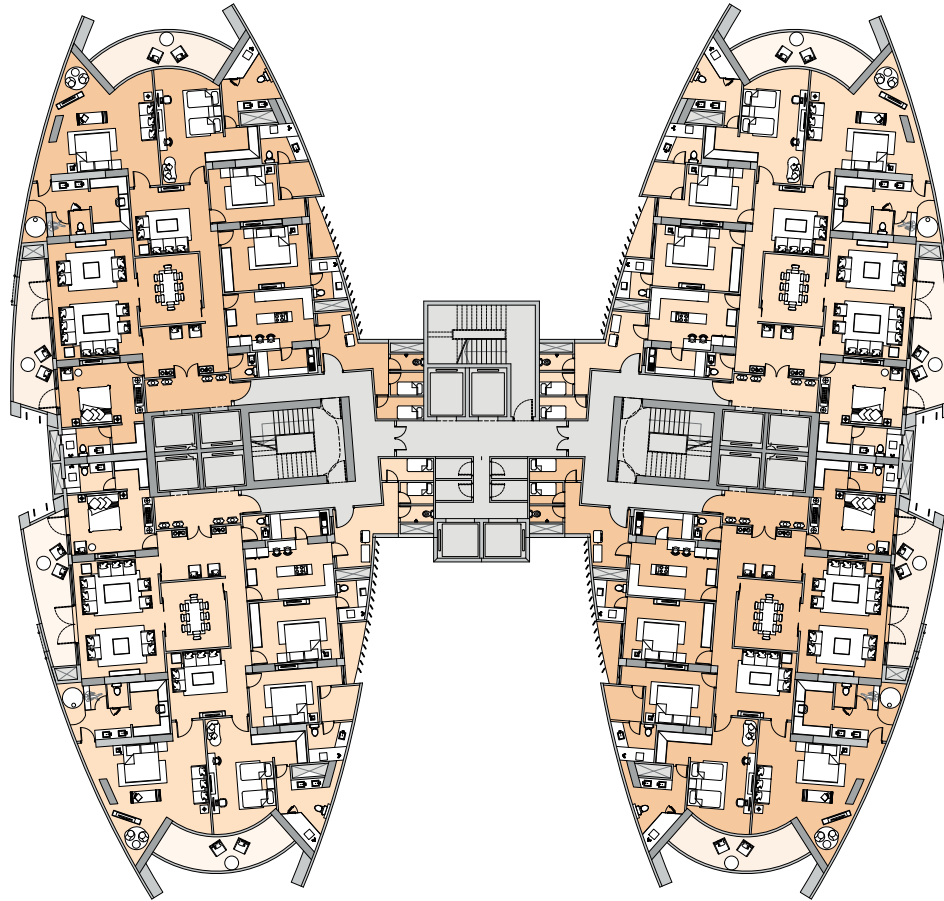
One 5 BHK Apartment  
Balcony Area - 43 m2



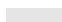

Single Unit	Previous	Proposed
Room	Size (m2)	
Balcony (Main)	27	23.9
Master Bedroom	30	45
Master En-suite	20	11.6
Master Wardrobe	9	7.9
Bedroom 02	20	19
En-Suite + Wardrobe 02	9	11.2
Bedroom 03	15	20.9
En-Suite + Wardrobe 03	12	4.8
Bedroom 04	20	18.4
En-Suite + Wardrobe 04	5	9
Children's Room	19	28.4
Childrens En-Suite	13	17.1
TV Room	16	19.3
Dining Room	15	16.4
Lounge	38	37.5
Lift Lobby	11	10.4
Entrance Lobby	15	16.4
Powder Room	3.4	2.9
Kitchen	18	19
Utility	2.4	5.8
Utility Balcony	7	14.4

1 Typical 5BHK Apartment Areas

# Residential Plan

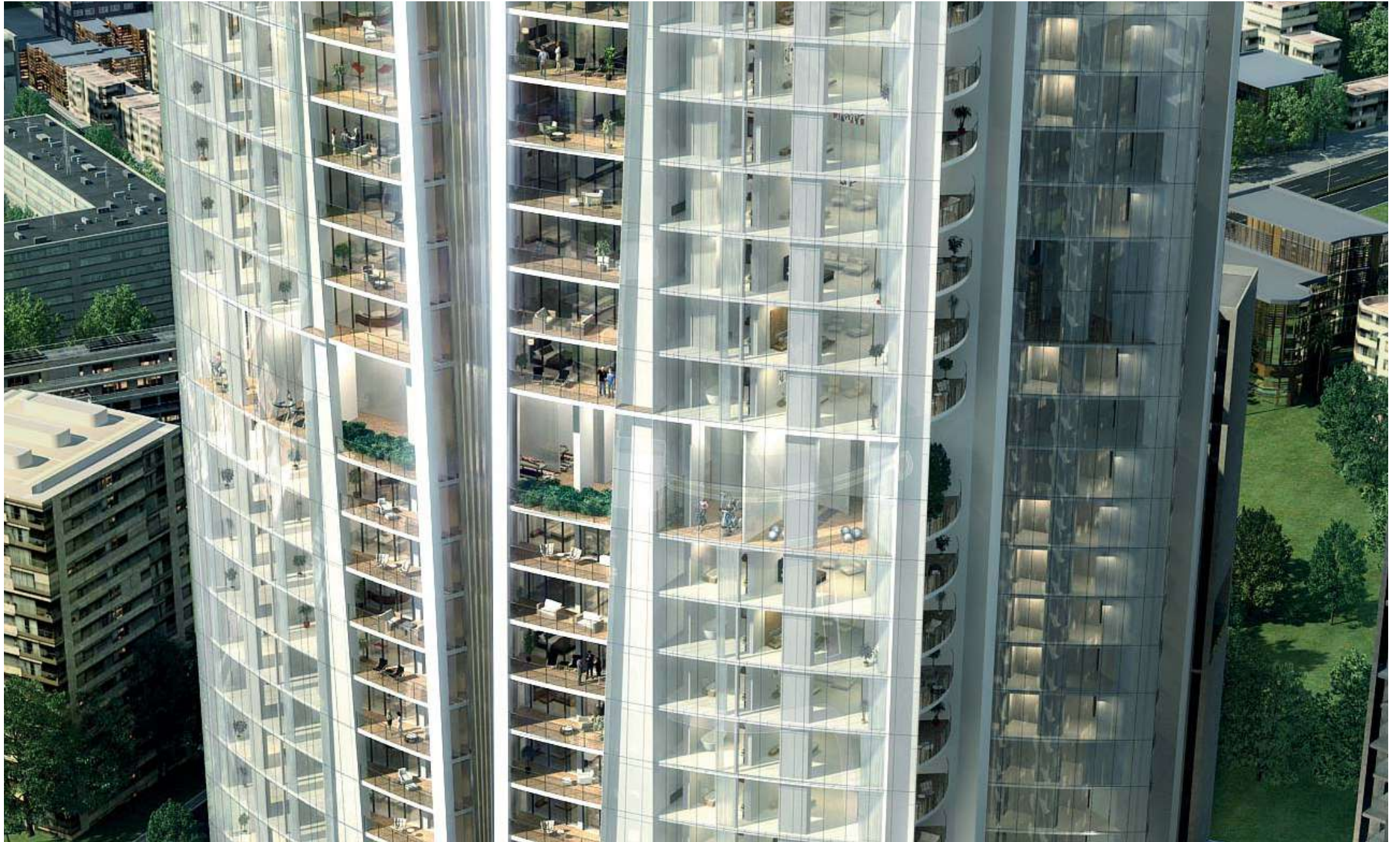
Typical residential floor (4 Units)



-  5 BHK Apartments
-  5 BHK Apartments
-  Central Core
-  Structure

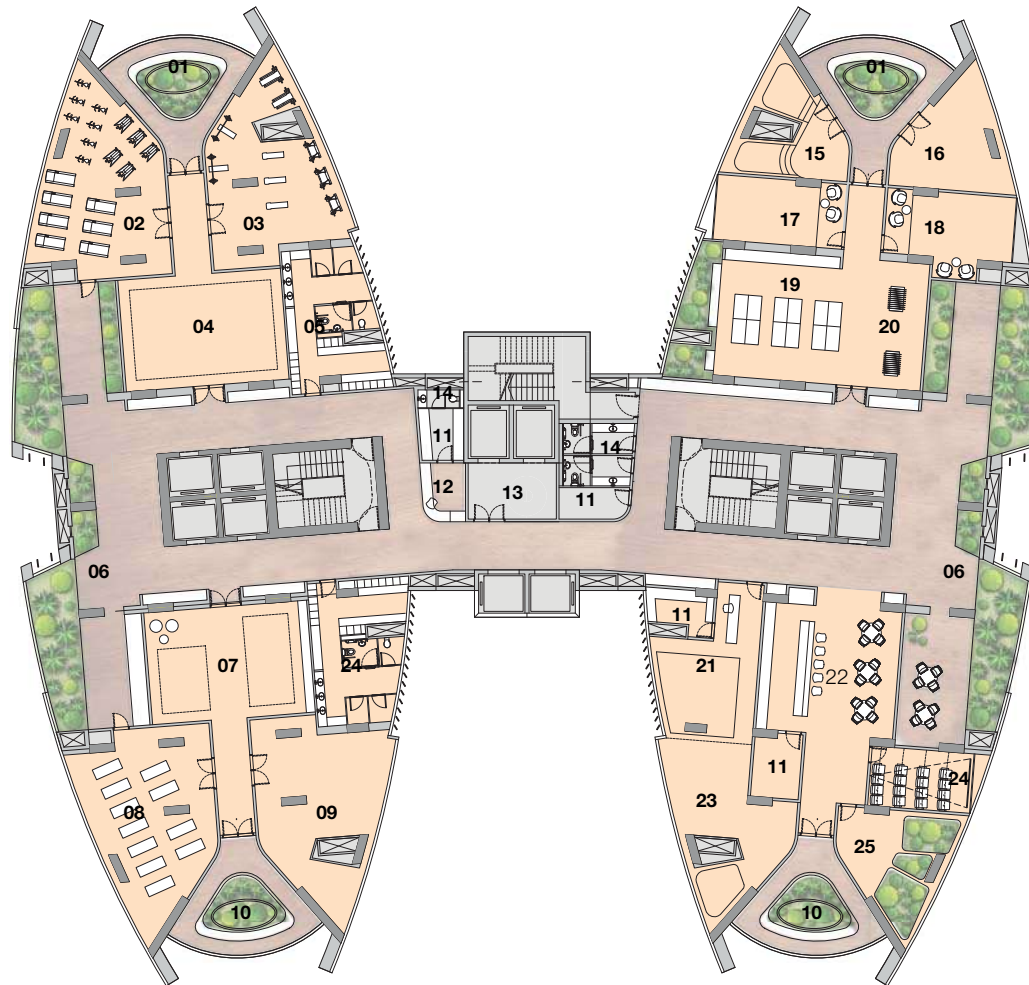
# Sky-Garden

Skygarden level and amenities





**Skygarden Level (Level 29 + 107.35)**  
Skygarden Plan



- 01. Aromatic Garden
- 02. Cardio Area
- 03. Weights Area
- 04. Gym General Area
- 05. Male Changing Room
- 06. Open air Non\_Conditioned
- 07. Gym Stretching Area
- 08. Class Room
- 09. Private Training Room
- 10. Flower Garden
- 11. Boh
- 12. Service Desk
- 13. Service Lobby
- 14. Washrooms
- 15. Meditation
- 16. Yoga
- 17. Golf Simulation Room
- 18. Cricket Simulation Room
- 19. Tennis Table
- 20. Fussball
- 21. Creche - Kid's Space
- 22. Juice Bar
- 23. Play - Room

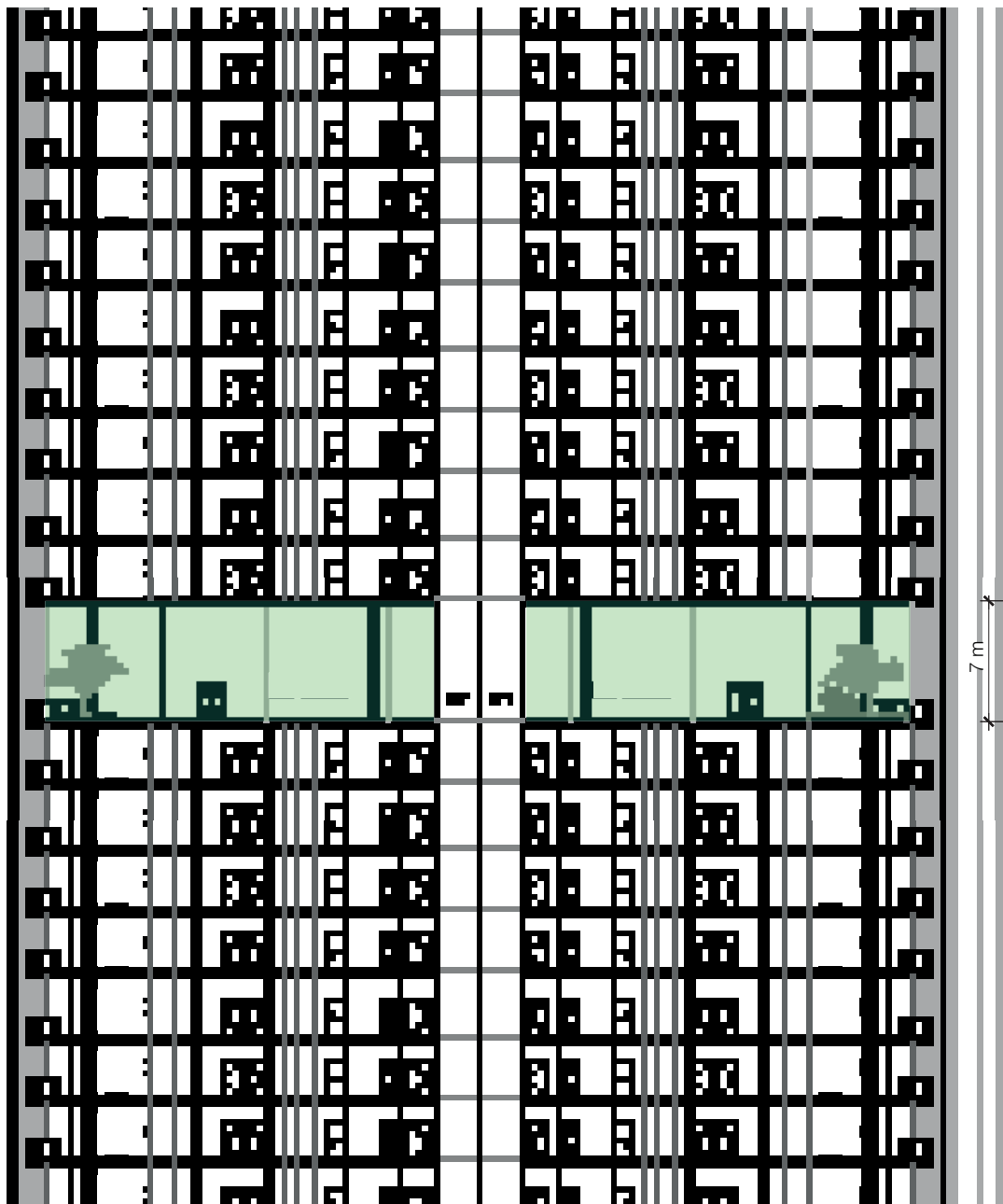
**Amenities**

Carpet Area = 859 m2

Balcony / Terraces /Open air areas = 680 m2



Skygarden  
Skygarden Level Section

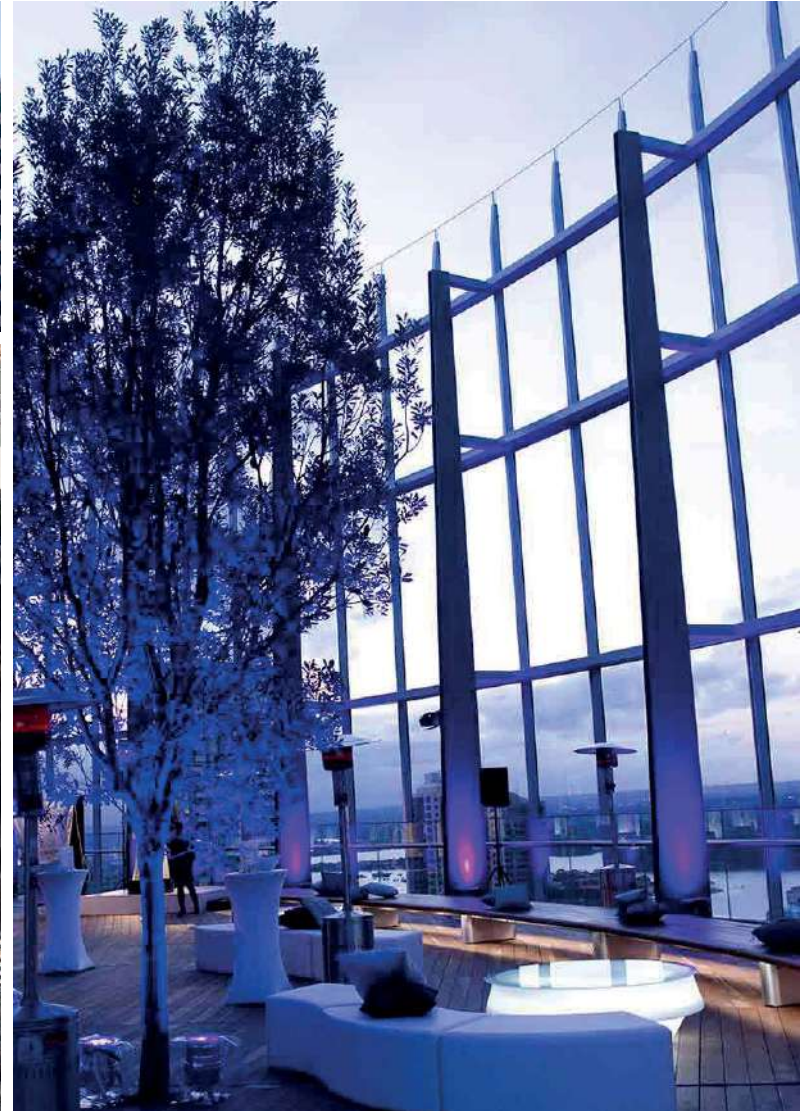


Upper Levels of the Tower  
Amenities Levels

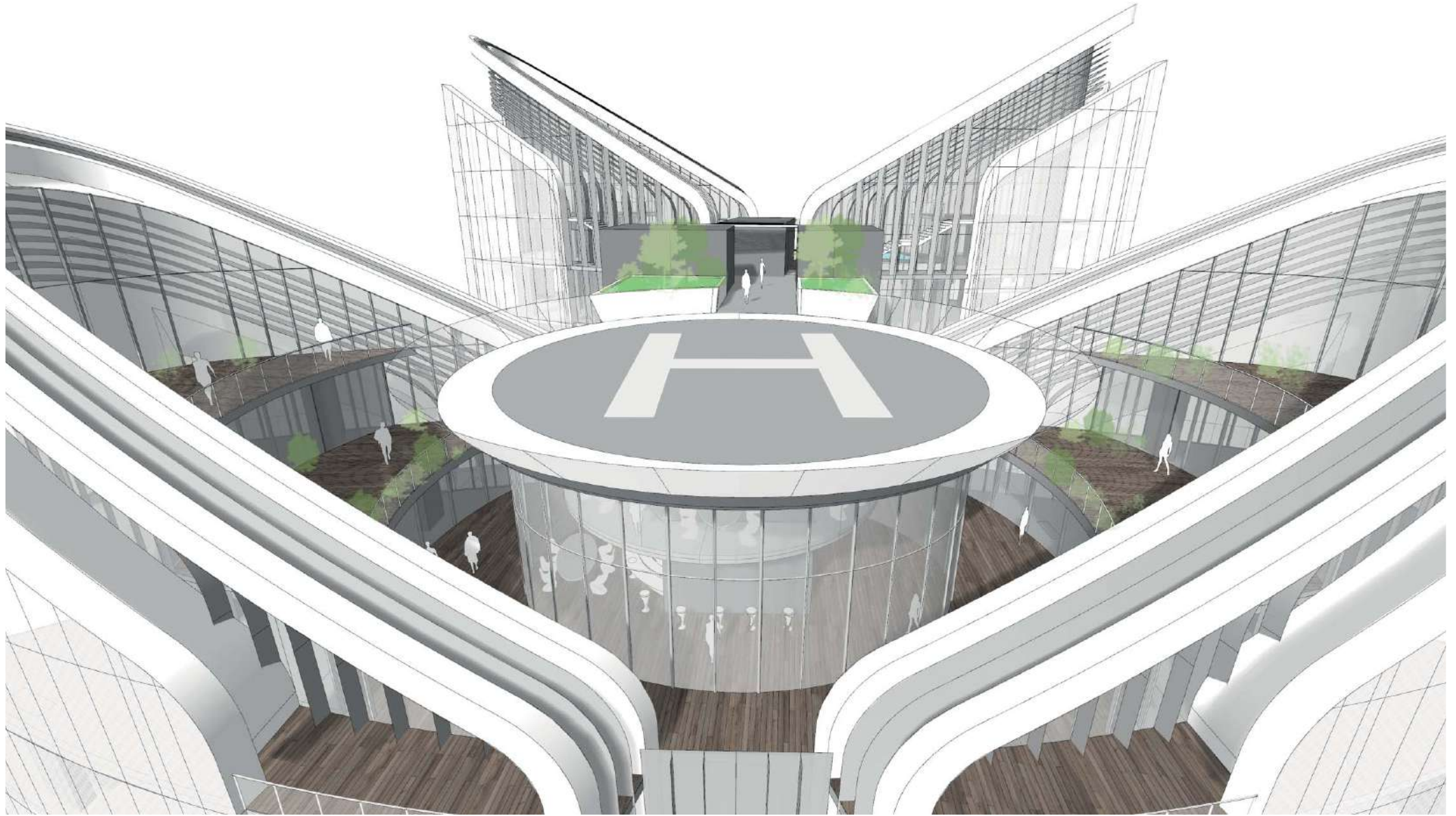


# Upper Levels of the Tower

Reference images



**Upper Levels of the Tower**  
VIP bar at Level 41 with Helipad above



## Upper Levels of the Tower

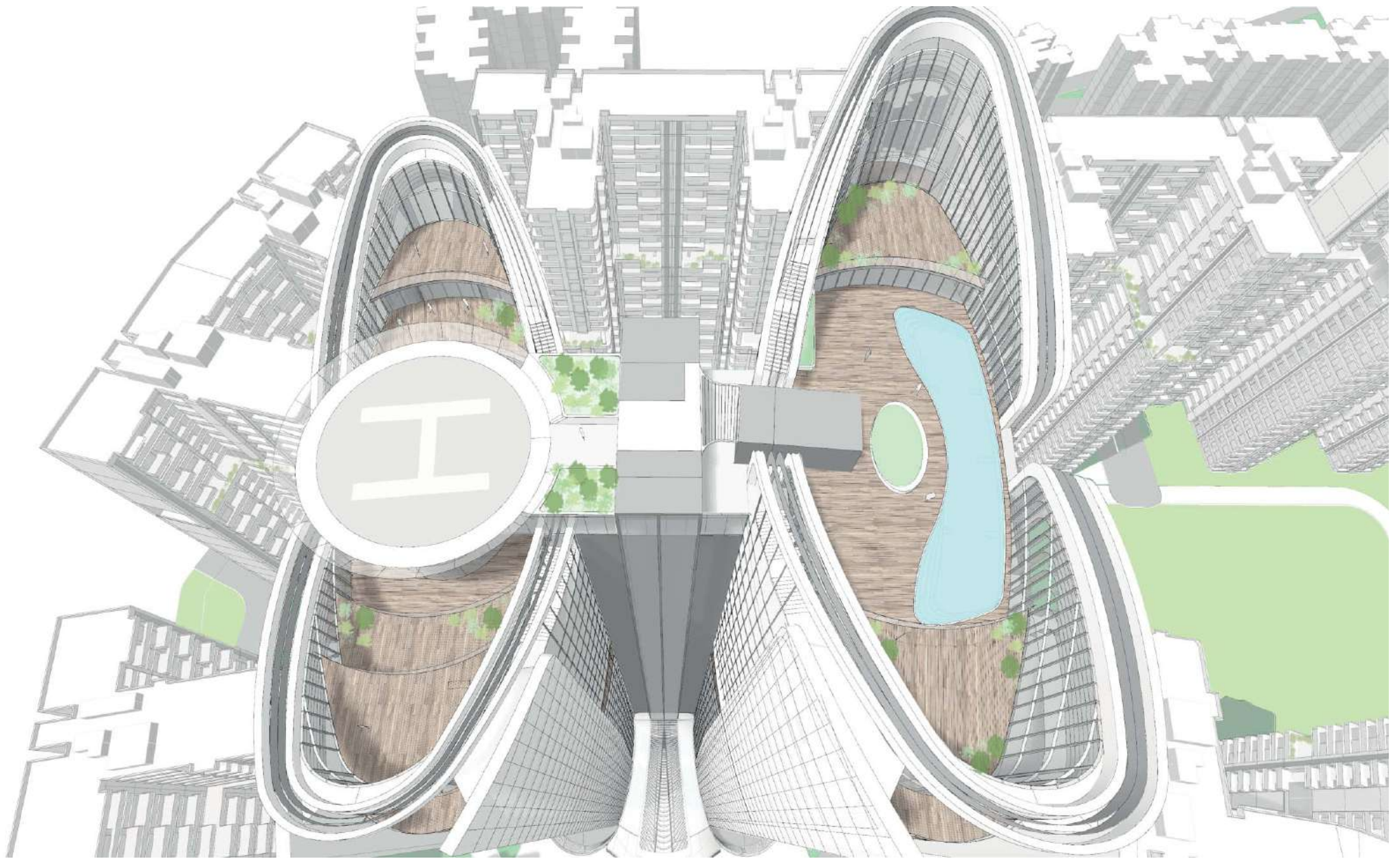
VIP bar at Level 41



**Upper Levels of the Tower**  
Level 43 - Infinity Pool terrace



**Upper Levels of the Tower**  
Restaurant Terrace - reference images

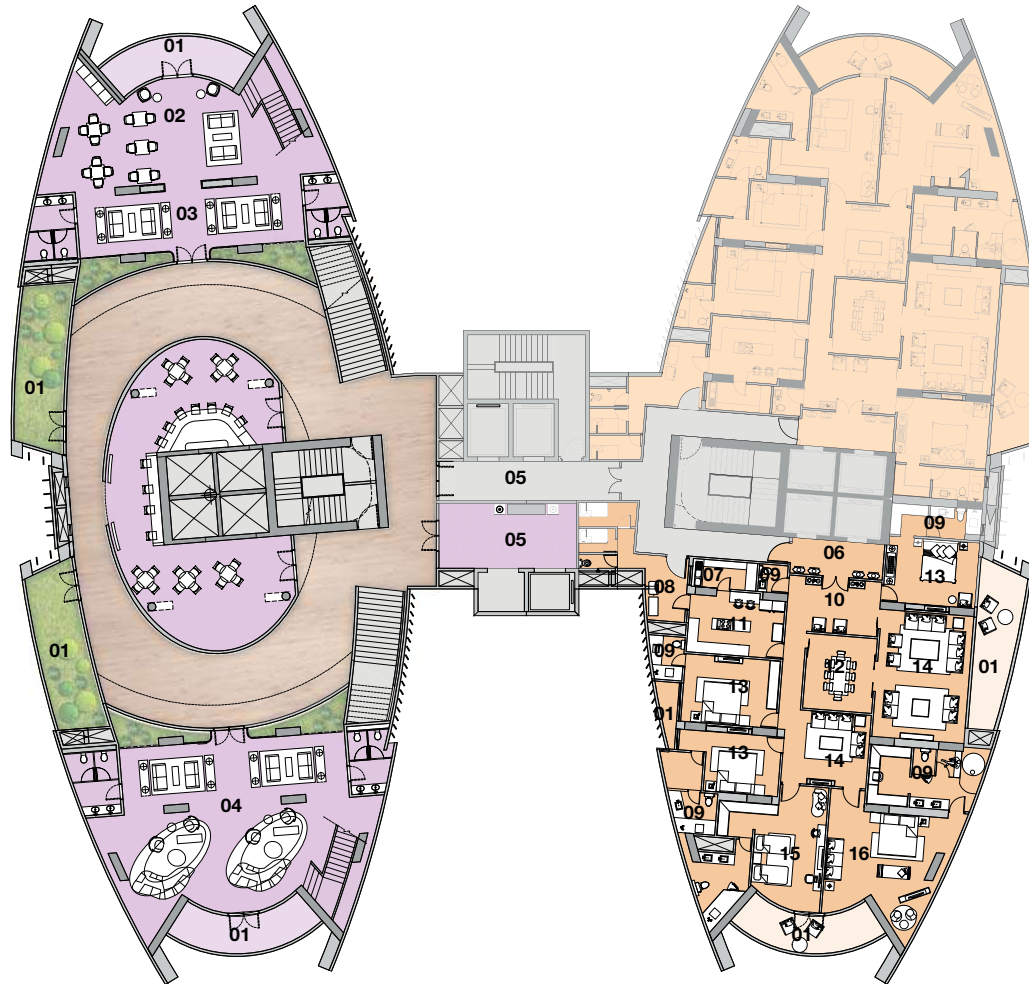


# Level 41 Plan

Upper Level Amenities + Residential Level



- 01. Balcony
- 02. Library
- 03. Game Room
- 04. Cigar Vip lounge
- 05. Entry lobby
- 06. Private Lift Lobby
- 07. Utility
- 08. Servant Apartments
- 09. Washrooms
- 10. Foyer
- 11. Kitchen
- 12. Dining Area
- 13. Bedroom
- 14. Living Area
- 15. Children's Bedroom
- 16. Master Bedroom



## Amenities

Carpet Area = 257 m<sup>2</sup>

Balcony / Terraces = 376 m<sup>2</sup>



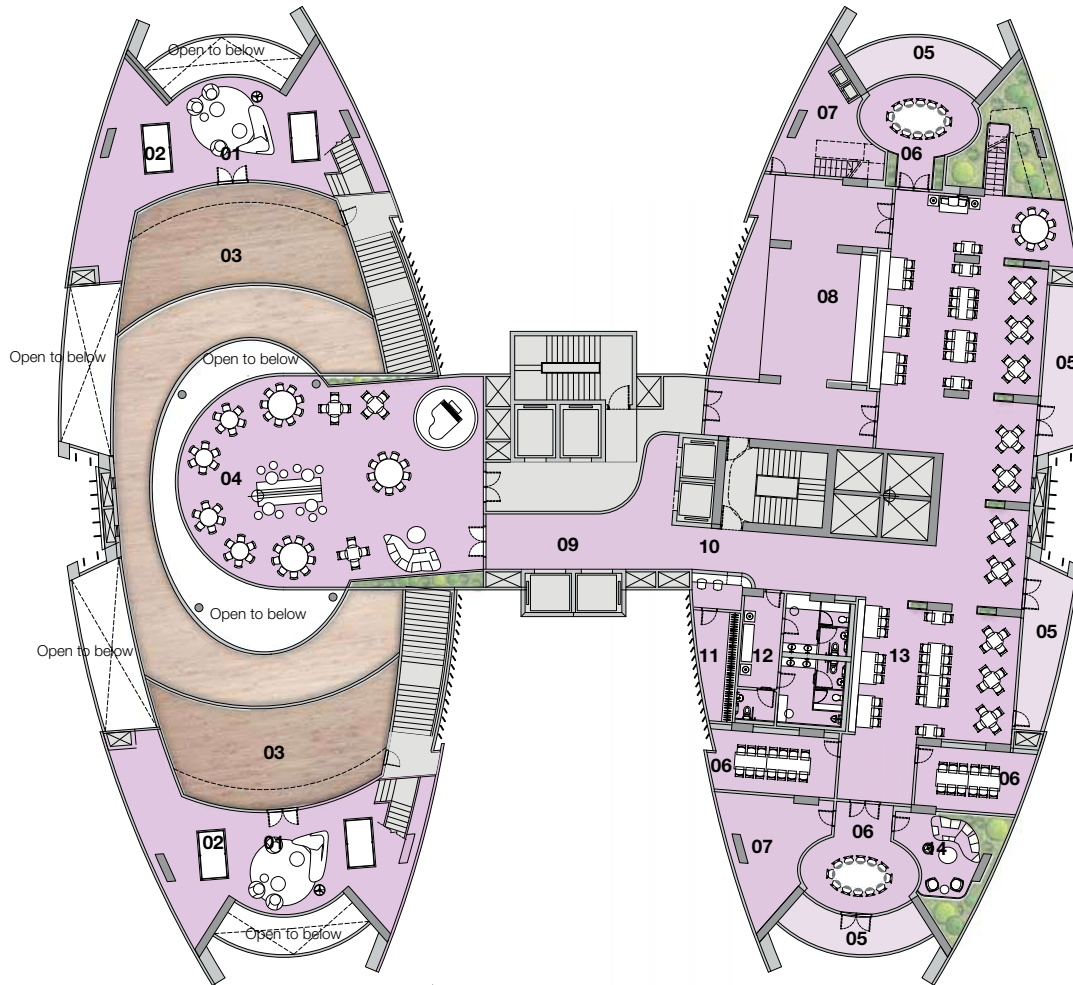


# Level 42 Plan

## Upper Level Amenities level



- 01. Game Room
- 02. Snooker
- 03. Sky Terrace and Greenery
- 04. Event Space
- 05. Balcony
- 06. Private Dining Room
- 07. Boh
- 08. Kitchen
- 09. Entry Lobby
- 10. Reception
- 11. Cloak Room
- 12. Washrooms
- 13. Signature Restaurant
- 14. Lounge



### Amenities

Carpet Area = 1200 m<sup>2</sup>

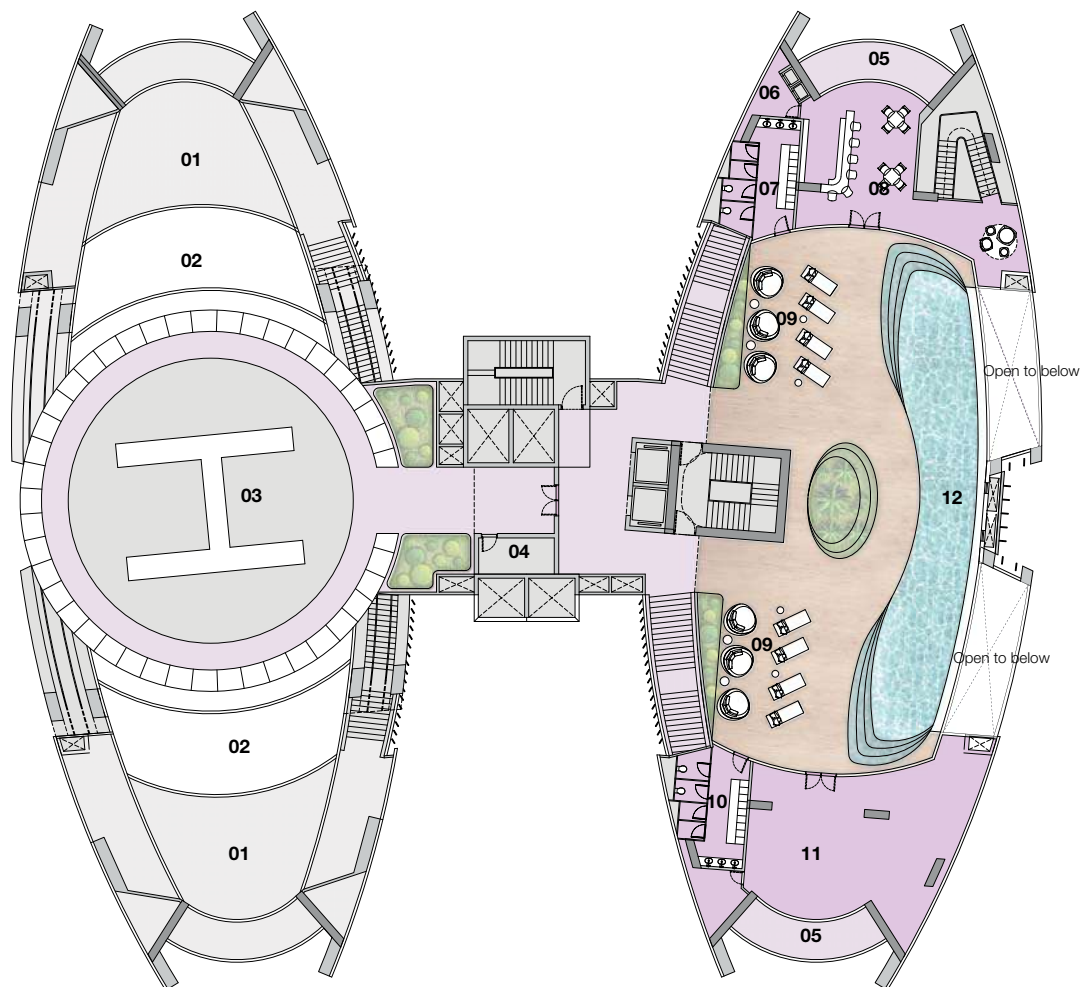
Balcony / Terraces = 180 m<sup>2</sup>



# Level 43 plan

## Upper Level Amenities + Helipad

- 01. Mechanical Floor
- 02. Sky Terrace and Greenery Below
- 03. Helipad
- 04. LMR
- 05. Balcony
- 06. Dumbwaiters - Connection with Kitchen
- 07. Changing Room Female
- 08. Cocktail Bar
- 09. Relaxation Lounge
- 10. Changing Room Male
- 11. Dj Booth and Dancing Area
- 12. Infinity Pool



### Amenities

Carpet Area = 270 m<sup>2</sup>

Balcony / Terraces = 850 m<sup>2</sup>

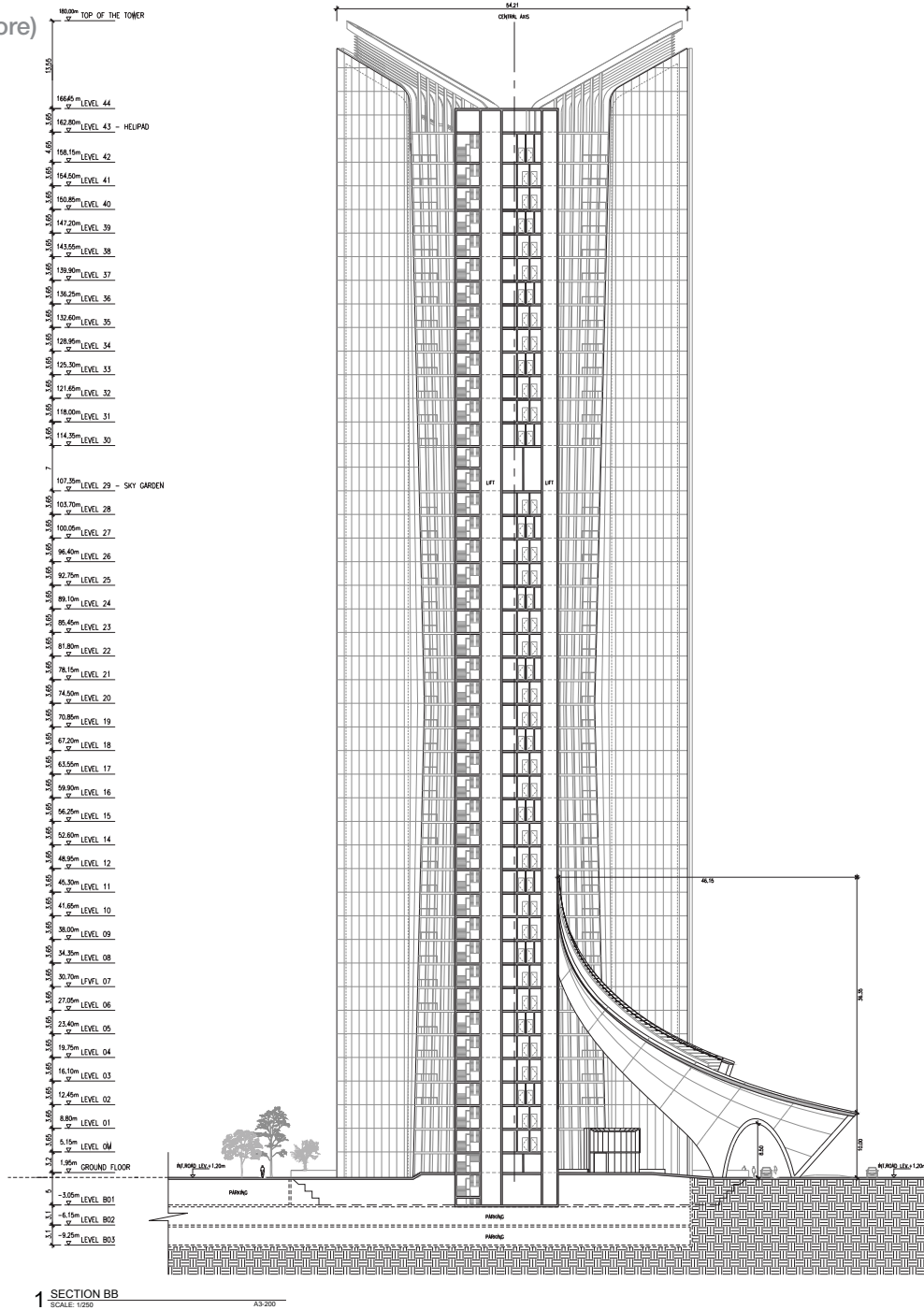






# Sections

## West East Section (through Core)



**GENERAL NOTES:**

1. DO NOT SCALE DRAWINGS, DIMENSIONS GOVERN.
2. ALL DIMENSIONS ARE IN MILLIMETERS UNLESS NOTED OTHERWISE.
3. ALL DIMENSIONS TO BE FIELD VERIFIED BEFORE PROCEEDING WITH WORK.
4. UHA-LOGOS TO BE NOTIFIED OF ANY OCCURRENCES IN WRITING.
5. ALL AREAS ARE INDICATIVE AND APPROXIMATE ONLY.

**Legend:**

**NOT FOR CONSTRUCTION**

UHA PLOT DATE: 02 September 2015 12:21:58

---		
---		
---		
---		
---		
---		
---		
---		
---		
A	02/09/2015	100% Concept Design

Rev Date Description

**Key:**

**Project:**  
VERSACE RESIDENCES

**Location:** Monharial Khurana Marg, New Delhi, India

**Client:**  
UNITY GROUP

G-5, Apporale Corporate Tower, Plot No.-23,  
Rajendra Place New Delhi - 110 008, India

**Design Architect:**  
17 Micawber Street  
London N1 7TB  
Tel: +44 20 3387 3471  
Upton-Hansen Architects Ltd.

**Executive Architect:**  
C-65, East of Kailash  
New Delhi, India, 110065  
Tel: +91 11 46099599  
Gian P.Mathur & Associates Pvt. Ltd.

**Structural Engineer:**

Address -city/state - Country- Misc. info  
Energy/Comfort Consultant and M.E.P Engineers:

Address -city/state - Country- Misc. info  
Local Engineer: Structural, Mechanical, Civil:

Address -city/state - Country- Misc. info  
Phase: Concept Design

**Title:**  
BUILDING SECTION BB

Proj. Nr.: 131002

Drawn: DA/GN/AL

Checked: JUH/RM

Size: A0

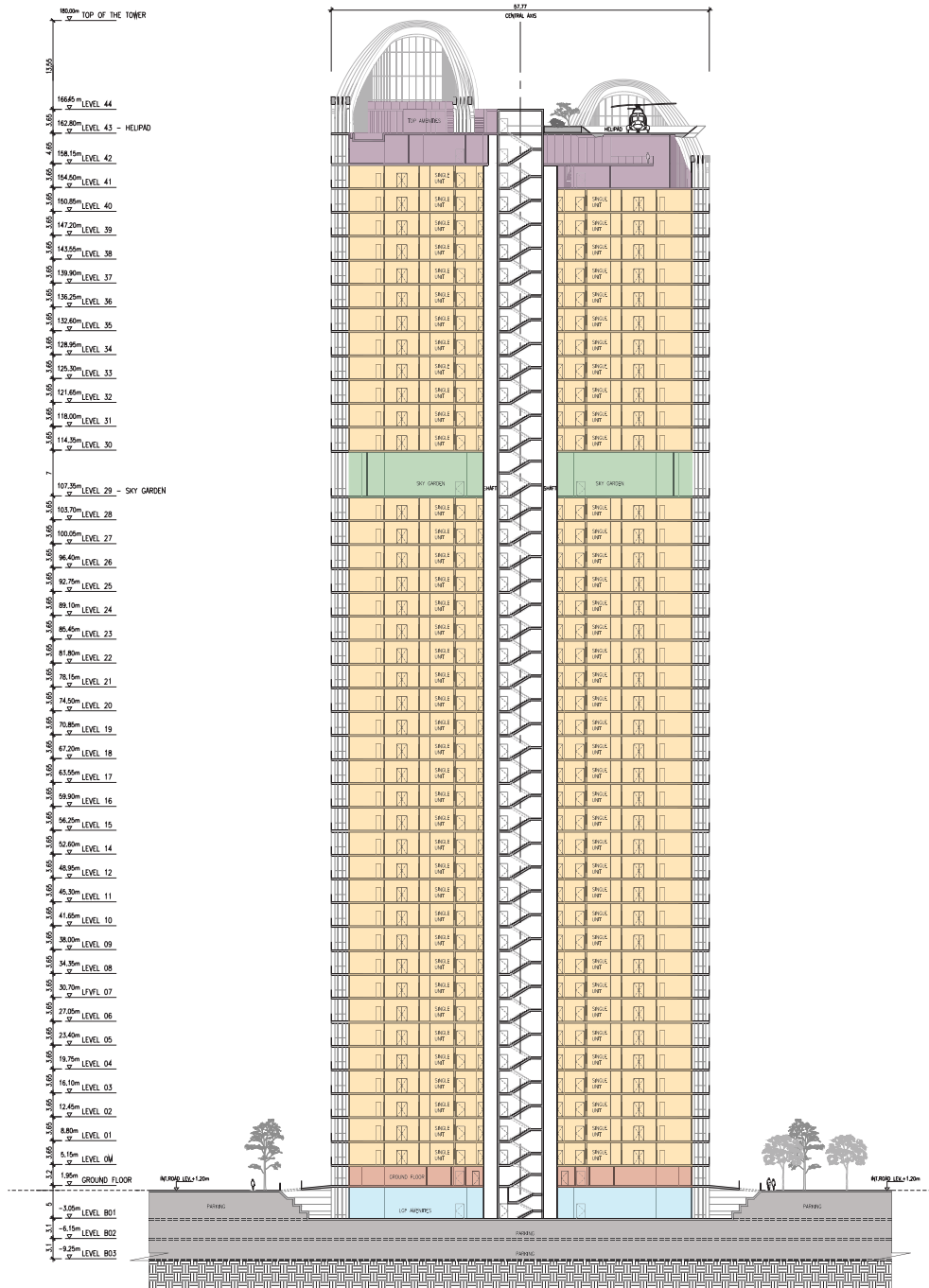
**SCALE:** (1:250)

A3-201 A

Bldg. | Sheet No. | Rev

# Sections

## North - South Section

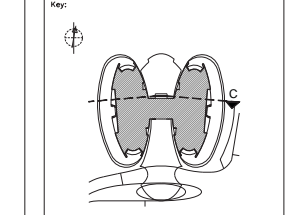


1 SECTION CC  
SCALE: 1/250

GENERAL NOTES:  
 1. DO NOT SCALE DRAWINGS, DIMENSIONS GOVERN.  
 2. ALL DIMENSIONS ARE IN MILLIMETERS UNLESS NOTED OTHERWISE.  
 3. ALL DIMENSIONS TO BE FIELD VERIFIED BEFORE PROCEEDING WITH WORK.  
 4. UHA-LONDON TO BE NOTIFIED OF ANY DISCREPANCIES IN WRITING.  
 5. ALL AREAS ARE INDICATIVE AND APPROXIMATE ONLY.

Legend:

Rev	Date	Description
A	02/09/2015	100% Concept Design



Project:  
**VERSACE RESIDENCES**  
 Location: Monharial Khurana Marg, New Delhi, India  
 Client:  
**UNITY GROUP**  
 G-3, Appagal Corporate Tower, Plot No.-23,  
 Rojendra Place New Delhi - 110 008, India  
 Design Architect:  
  
 17 Micaamber Street  
 London N11 7TB  
 Tel: +44 20 5387 3471  
 Upton-Hansen Architects Ltd.  
 Executive Architect:  
  
 C-65, East of Kailash  
 New Delhi, India, 110065  
 Tel: +91 11 46599599  
 Gian P.Mathur & Associates Pvt. Ltd.  
 Structural Engineer:  
 Address -city/state - Country- Misc. info  
 Energy/Comfort Consultant and M.E.P. Engineers:

Address -city/state - Country- Misc. info  
 Local Engineer: Structural, Mechanical, Civil

Address -city/state - Country- Misc. info  
 Phase: Concept Design

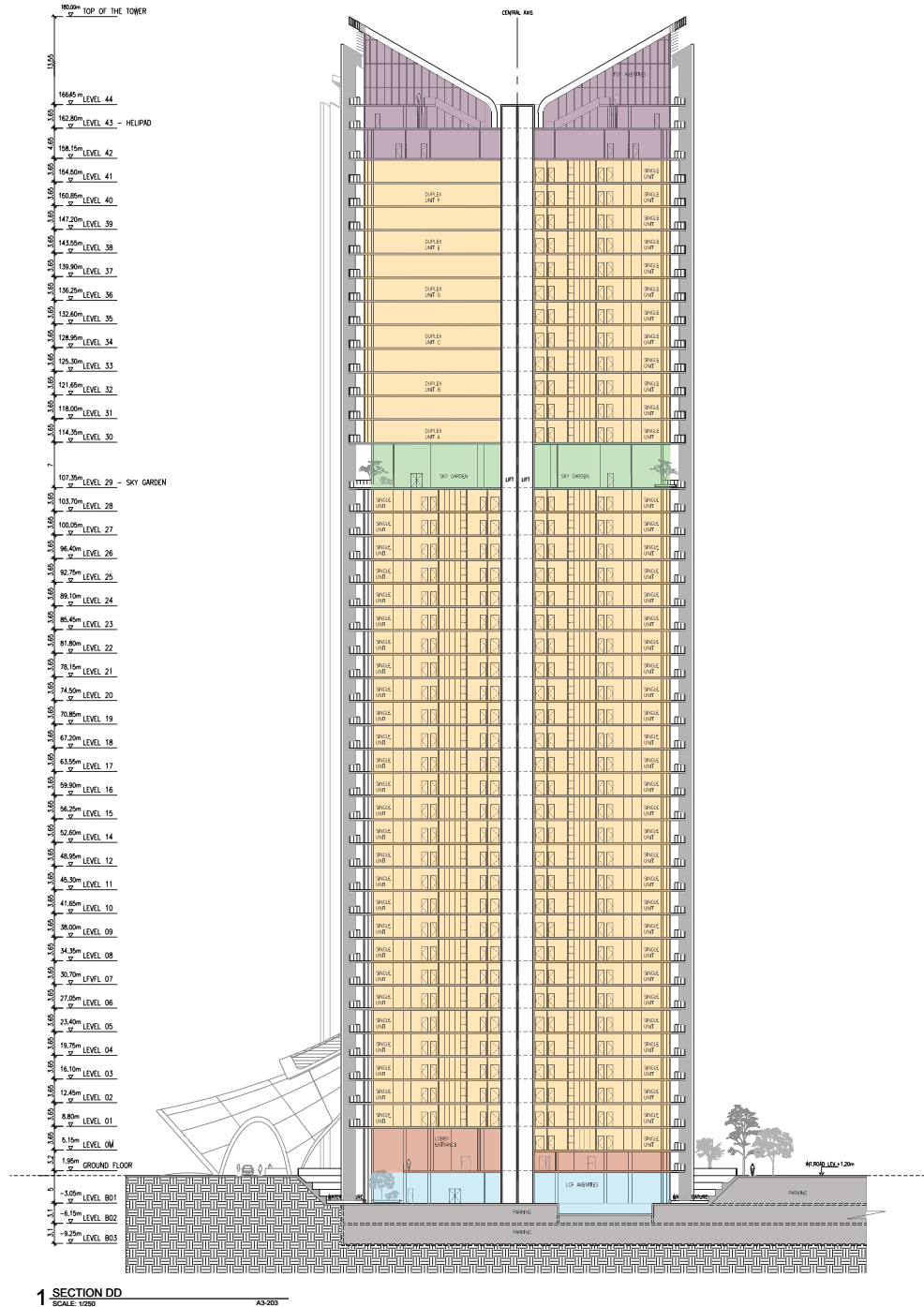
Title:  
**BUILDING SECTION CC**

Proj. Nr.: 131002  
 Drawn: DA/GN/AL  
 Checked: JUH/RM  
 Size: A0  
 SCALE: (1:250)

-	<b>A3-202</b>	<b>A</b>
Bldg.   Sheet No.		Rev

# Sections

## East- West Section



1 SECTION DD  
SCALE: 1/250

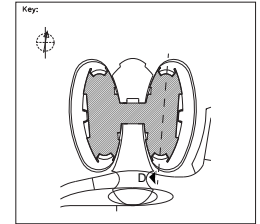
- GENERAL NOTES:
1. DO NOT SCALE DIMENSIONS. DIMENSIONS GIVEN.
  2. ALL DIMENSIONS ARE IN MILLIMETERS UNLESS NOTED OTHERWISE.
  3. ALL DIMENSIONS TO BE FIELD VERIFIED BEFORE PROCEEDING WITH WORK.
  4. UHA-LONDON TO BE NOTIFIED OF ANY DISCREPANCIES IN WRITING.
  5. ALL AREAS ARE INDICATIVE AND APPROXIMATE ONLY.

Legend:

NOT FOR CONSTRUCTION

UHA PLOT DATE: 02 September 2015 14:28:59

Rev	Date	Description
A	02/09/2015	100% Concept Design



Project:  
**VERSACE RESIDENCES**

Location: Monharia Khurana Marg, New Delhi, India

Client:  
**UNITY GROUP**

G-3, Aggarwal Corporate Tower, Plot No.-23,  
Rajendra Place New Delhi - 110 008, India

Design Architect:  
**uhalondon**  
17 Micawber Street  
London N1 7TB  
Tel: +44 20 3397 3471  
Upton-Hansen Architects Ltd.

Executive Architect:  
**ojp**  
C-55, East of Kailash  
New Delhi, India, 110065  
Tel: +91 11 46599599  
Gian P.Mishra & Associates Pvt. Ltd.

Structural Engineer:

Address -city/state - Country- Masc. info  
Energy,Comfort Consultant and M.E.P Engineers:

Address -city/state - Country- Masc. info  
Local Engineer: Structural, Mechanical, Civil:

Address -city/state - Country- Masc. info  
Phase: Concept Design

Title:  
**BUILDING SECTION DD**

-

Proj. Nr.: 131002

Drawn: DA/GN/AL

Checked: JUH/RM

Size: AO

SCALE: (1:250)

- | **A3-203** | **A** |  
| Bldg. | Sheet No. | | Rev |









**uhal**london

Unit 101, 17 Micawber Street  
London, N1 1TB, England  
Tel: +44 (0) 203 397 3471  
Fax: +44 (0) 203397 3472  
Contact@uh-architects.com

UPTON-HANSEN ARCHITECTS LIMITED  
Registered in England 07600973

**uhal**london