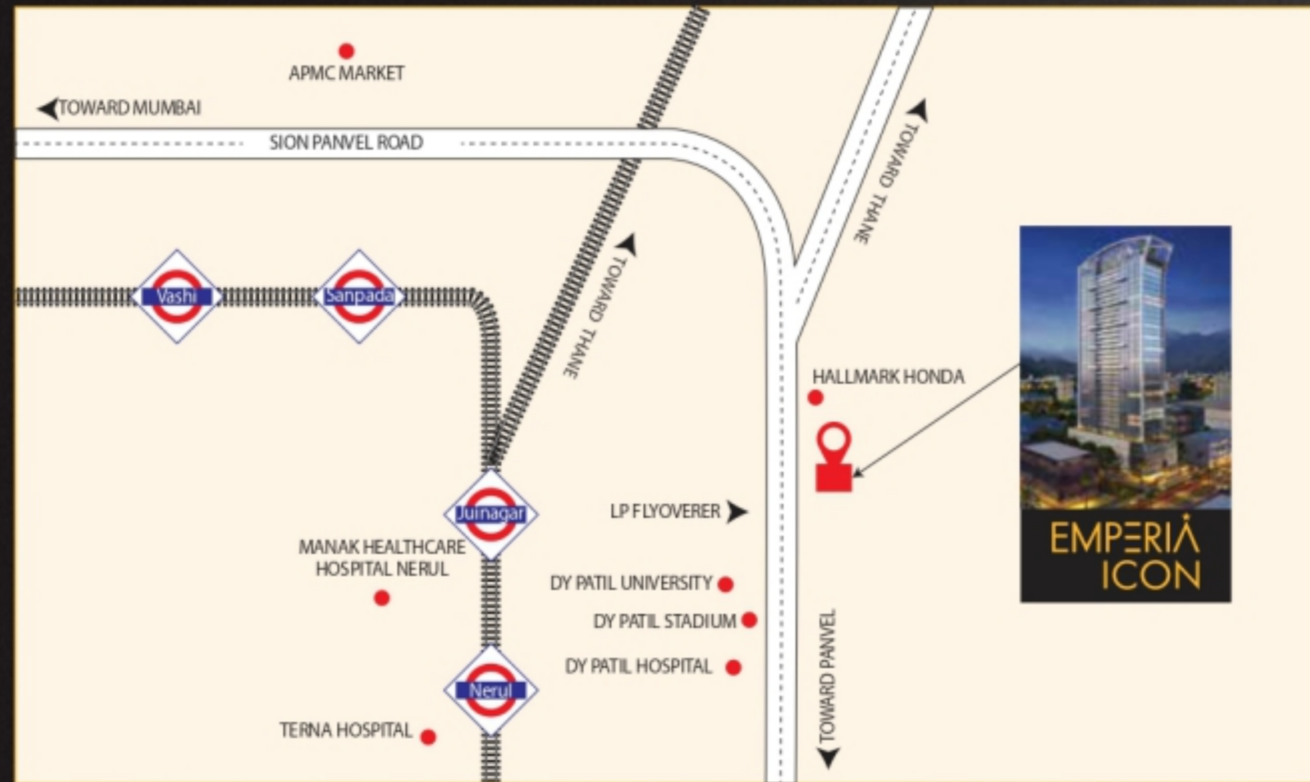


### Location Map



Site Add.: D-113, MIDC TTC AREA, Opp: DY Patil Stadium, Navi Mumbai - 400706.

# EMPERIA ICON

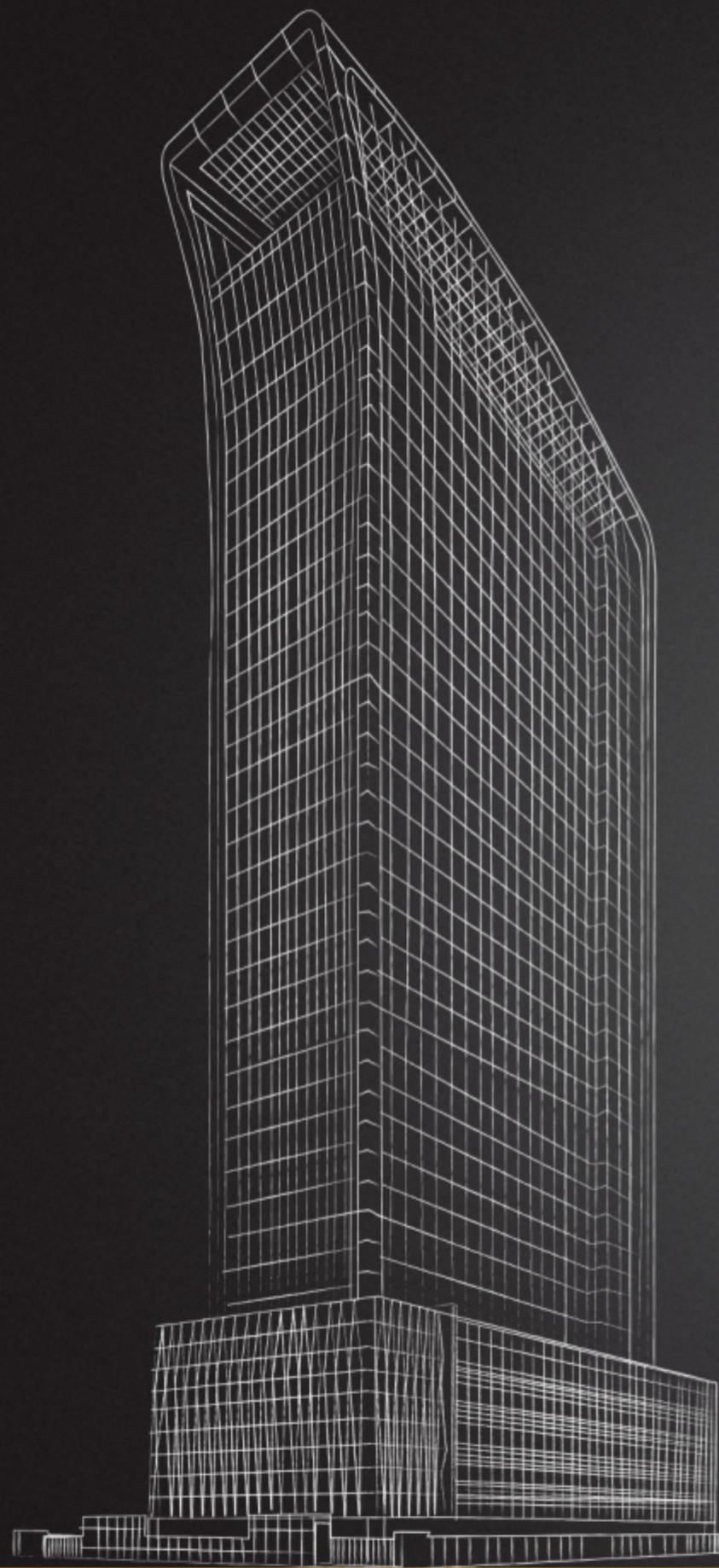
# EMPERIA PROJECTS

MahaRERA Registration Number: P51700029339  
 Corp. Off. : Mahavir Icon, Plot 89/90 Sector-15, CBD Belapur, Navi Mumbai - 400614.  
 Email : emperiaprojects@gmail.com

### FOR BOOKING AND ENQUIRES

☎ 022- 27434629 📞 +91 74063 00700 🌐 [www.emperiaprojects.in](http://www.emperiaprojects.in)

Disclaimer: All plans, drawings, amenities, facilities, etc. are subject to the approval of the respective authorities and would be changed, if necessary. The discretion remains with the developer. All rendering, floor plans, pictures, and maps are the artist's conceptions and not actual depictions of the building, it's walls, roadways, or landscaping. This brochure is for guidance and not a legal document. This brochure should also not be rendered, copied, or made available to others in any form of transmission. The Design & Specifications depicted in the brochure are subject to change without prior notice. Proposed development as mentioned in the brochure is subject to the approval of competent authorities.



**G+36 FLOORS**  
**COMMERCIAL WORKSPACE**  
**5 FLOORS OF PARKING**

# Innovative. Beacon. Boundless

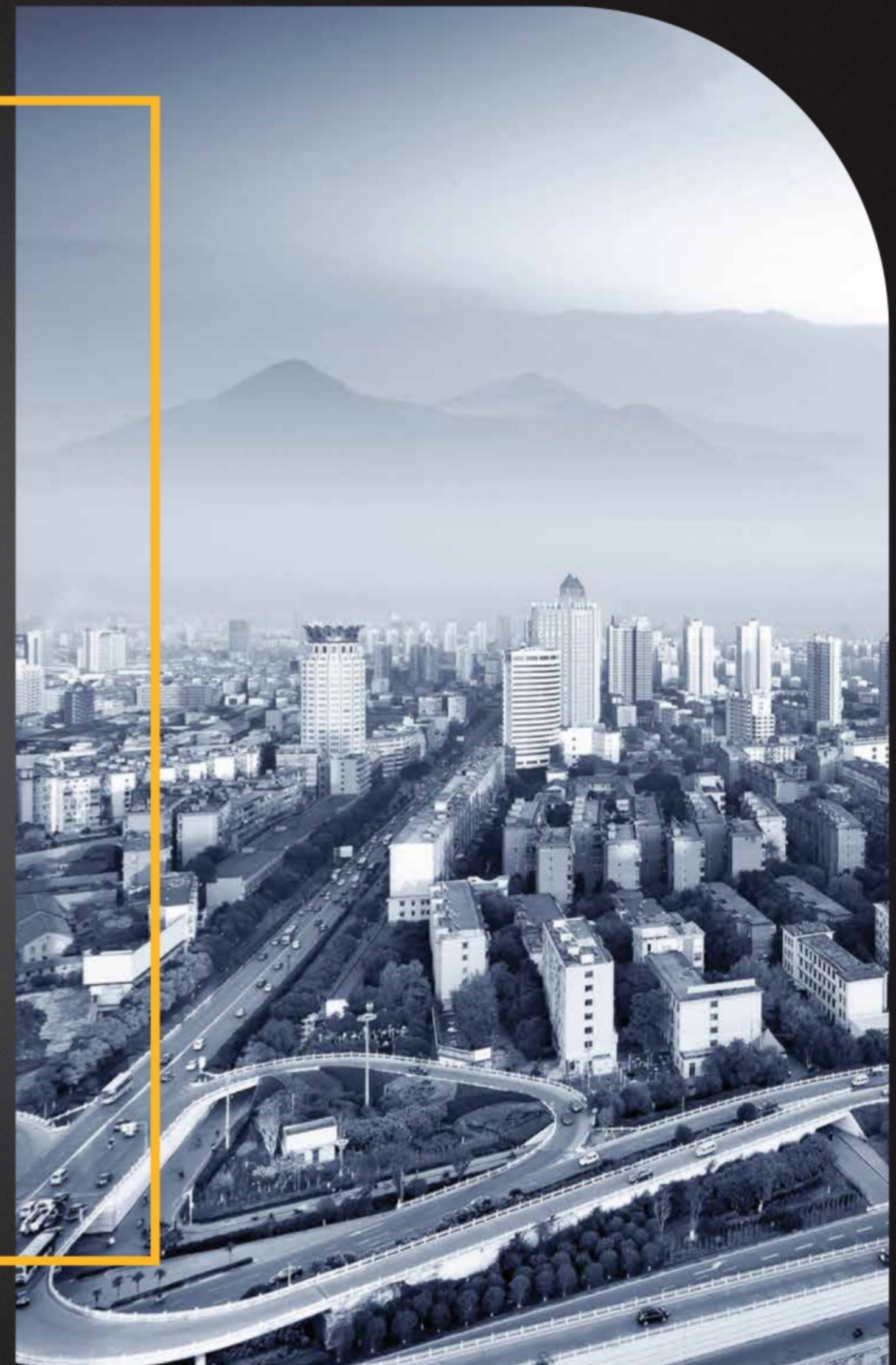
“ICON” is about being magnificent.  
Being pioneering & Exclusive.  
It’s about Inspiration.  
Giving limitless desires.

# The Iconic & Futuristic City

## THE INGRESS TO THE FUTURE... ★

Navi Mumbai is the largest planned city in the world, situated on the west coast of the Indian subcontinent, in the Konkan division of Maharashtra state. Today Navi Mumbai has grown into a full-fledged township and have seamless connectivity to all iconic destination of Navi Mumbai including the expressway connectivity to Mumbai and Pune.

The overwhelming growth of Navi Mumbai right from the education, hospitality, hospitals, superb connectivity have created an excellent habitat for people to live in this planned city. The residential projects have blossomed in the last decades and hence many of the corporate, Medium Scale enterprises have set their offices too. This has paved a way for commercial complex today as many of the commercial Business houses have a success story to tell because of the excellent connectivity to outstations and many are still earnestly looking at Navi Mumbai as a futuristic destination and well-planned infrastructure.





## Expressway Connectivity

- ★ NH4 and Mumbai Pune Expressway begin at the eastern end of the expressway, at Kalamboli junction near Panvel
- ★ High-speed expressway which stretches across 94.5 km. connecting Mumbai with Pune
- ★ It connects Mumbai to Pune, Lonavala, Goa, and Hubli & Bangalore

## Rail-Road Connectivity

- ★ Excellent train connectivity for CST, Andheri, Thane, Panvel (Navi Mumbai), and Dronagiri, Uran and Ulwe, making travel easy
- ★ Electric & AC Buses run across the city thus connecting Mumbai and Navi Mumbai

## Infrastructural Growth

- ★ Jawaharlal Nehru Port Trust
- ★ Mumbai Trans Harbour Link (MTHL)
- ★ Upcoming Navi Mumbai International Airport (NMIA)
- ★ Bank & Financial Institution
- ★ Captive Services
- ★ IKEA Store in Navi Mumbai
- ★ Shopping Malls at Vashi, Seawoods
- ★ Parks & Recreational Area
- ★ Metro Rails
- ★ Dy Patil International Stadium
- ★ Educational Hubs
- ★ Super Medical Speciality & Hospitality

# The Epicenter of Connectivity to destinations

Emperia ICON is Situated at Nerul which is Center of connectivity to nearest railway station Nerul, It has a great connectivity to other railway stations too like Vashi, CBD, Seawoods etc. The futuristic destination like International Airport is within 7 km. away.

**WHAT'S STOPPING YOU TO BE A  
PART OF THIS HABITAT?**



# EMPERIA ICON

NERUL

## The Iconic Top of the world life

Emperia ICON is truly magnificent and modern-day Business workspace. An enticing splendid facade along with state of the art amenities it's altogether great place to own. It consists of **G+36 Storey, 5 floors of parking** and stylish work space right from the boutique offices to large workspace.

### COME OWN A SPACE, IT'S YOUR WORLD

- ★ G+36 Storey Commercial IT/ITES Business Park
- ★ Glass Facade Elevation
- ★ 5 Level Covered Parking Area
- ★ Electric Charging Station on all Parking Floors
- ★ 5 Miconic High Speed Branded Elevators plus 2 Service lifts
- ★ Bare Shell Offices



# EMPERIA ICON

---

NERUL

---



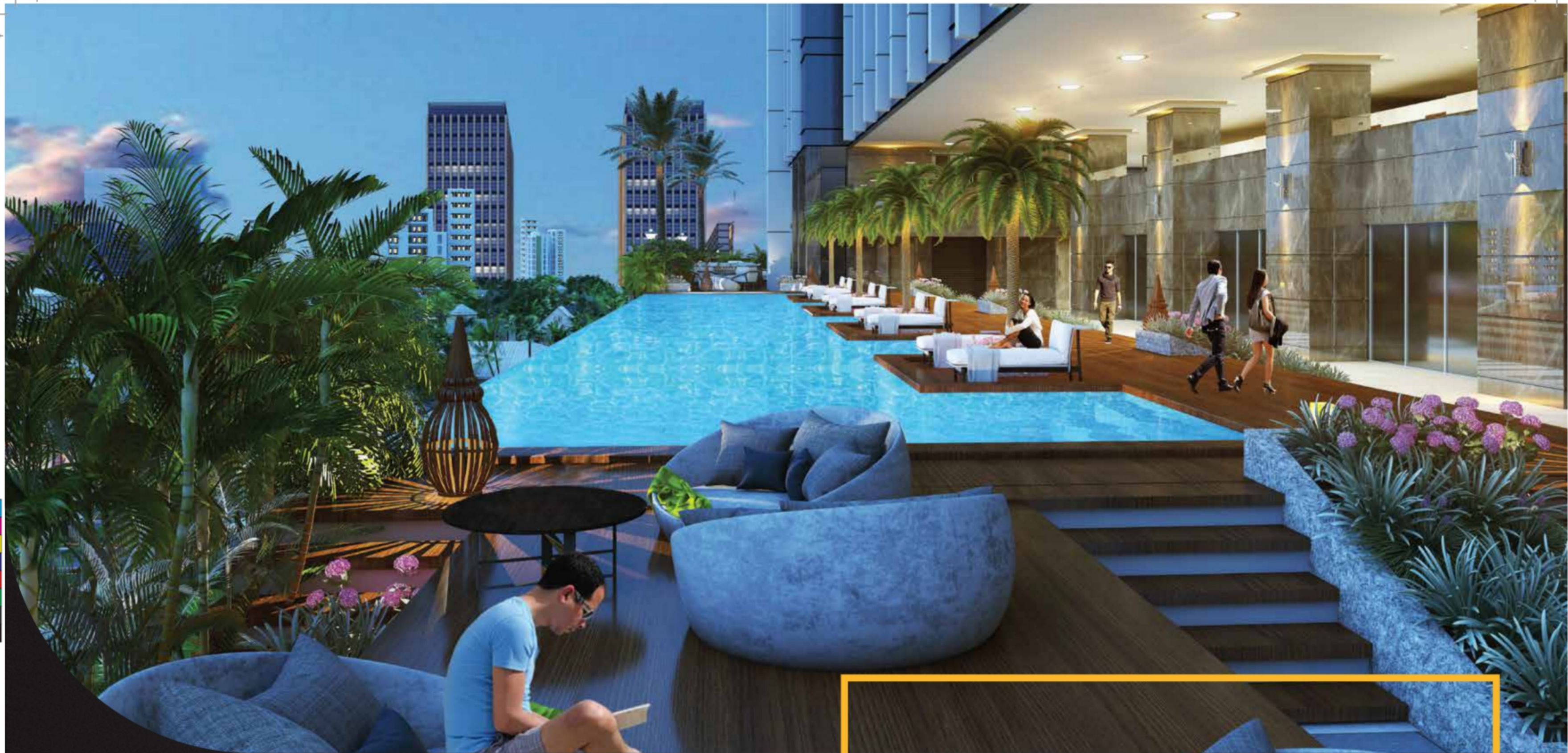


# Exquisite promise of indulgence

It stands sublimely in the most sought-after city of Navi Mumbai. Emperia ICON boasts of extravagant spectrum of majestic view right when you enter the grand lobby thus promising you a visual treat as you go up the floors. It would leave you spell bounded. It promises you great pleasure of spectacular beauty and indulgence.

**FEEL THE EXQUISITENESS WITHIN YOU.**





# Refresh & Rejuvenate at your work place

Take a dip at our podium pool when exhausted at work. Rejuvenate; refresh your mind body and soul. This indulgence would bring the best in you and your co-workers anytime you wish.

**WHAT A POSITIVE MIND CAN DO?,  
EXPERIENCE AT EMPERIA ICON .**



5 Level Covered Car Parking Area ★



Jogging track ★



Electric charging point



Spa



Firefighting



 Valet parking ★



 Miconic lift ★





# Over all Wellbeing, Look and feel your best

Daily fitness regime is about your optimal health and overall well-being. One needs to take care of physical health also rather than mental & emotional health. Energy to do what's important to you and to be more Productive.

**DE STRESS YOUR EMOTIONAL HIGHS &  
LOWS AT OUT FITNESS CENTER**





# Conference room Facility

Emperia ICON presents professional meeting rooms for workshops, seminars, or meetings with employees. It is also a perfect venue for exhibiting adulation and accolades to your employees or partners. It consists of state-of-art facilities along with technologically advanced features.

**THE PERFECT PLACE FOR  
MEETS AND ACCOLADES.**

# Experience Gastronomy

Restaurant symbolizes the spirit of keeping employees happy always. Good food always results in happiness and liking for the workplace. The restaurant would serve multiple cuisines, rich and delicate appetizing food along with the Cultural diversity of Indian taste.

**BUILD A RELATIONSHIP WITH  
CULTURALLY DIVERSE FOODS AT  
EMPERIA ICON**



# Emperia ICON Technical & Safety Specifications

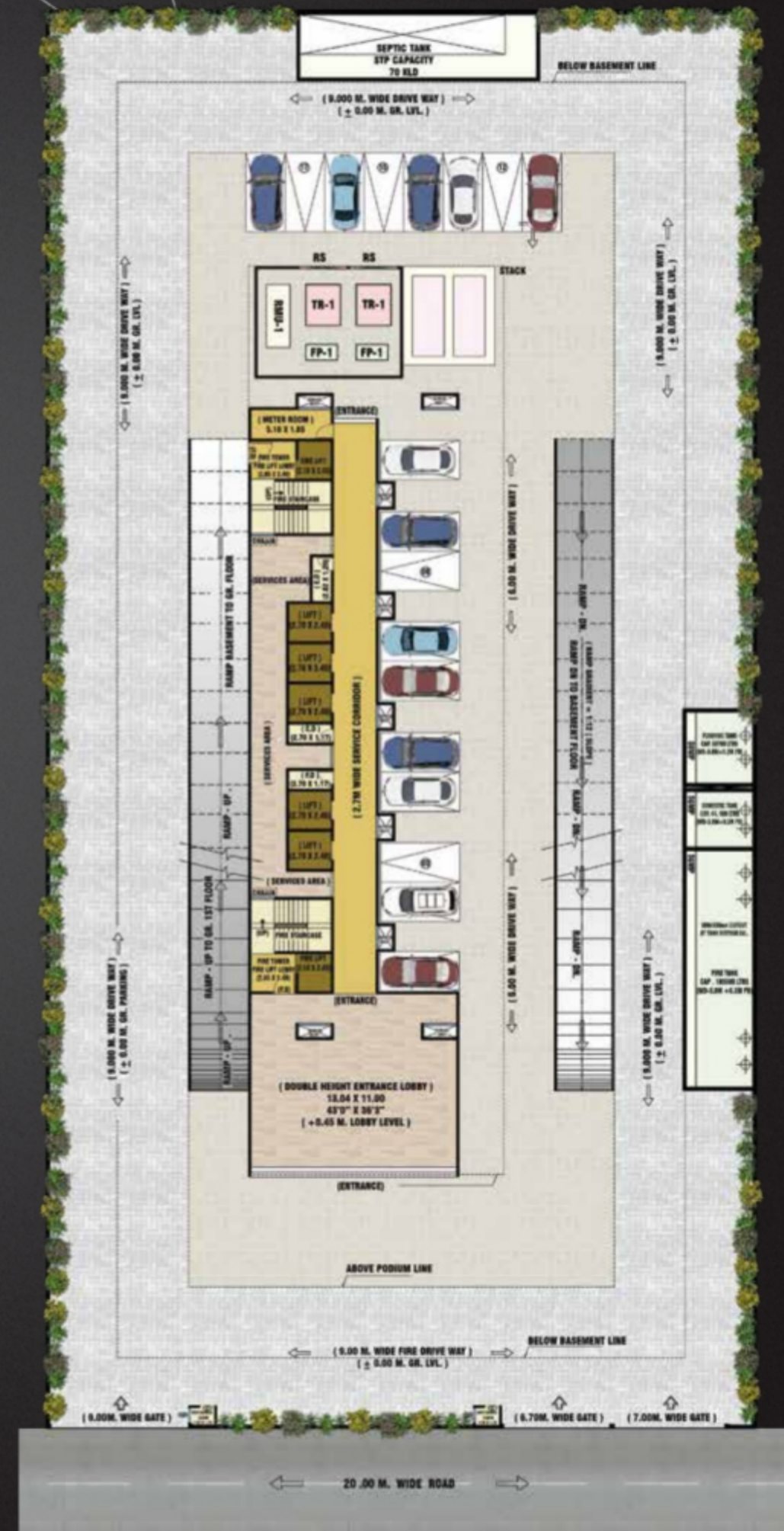
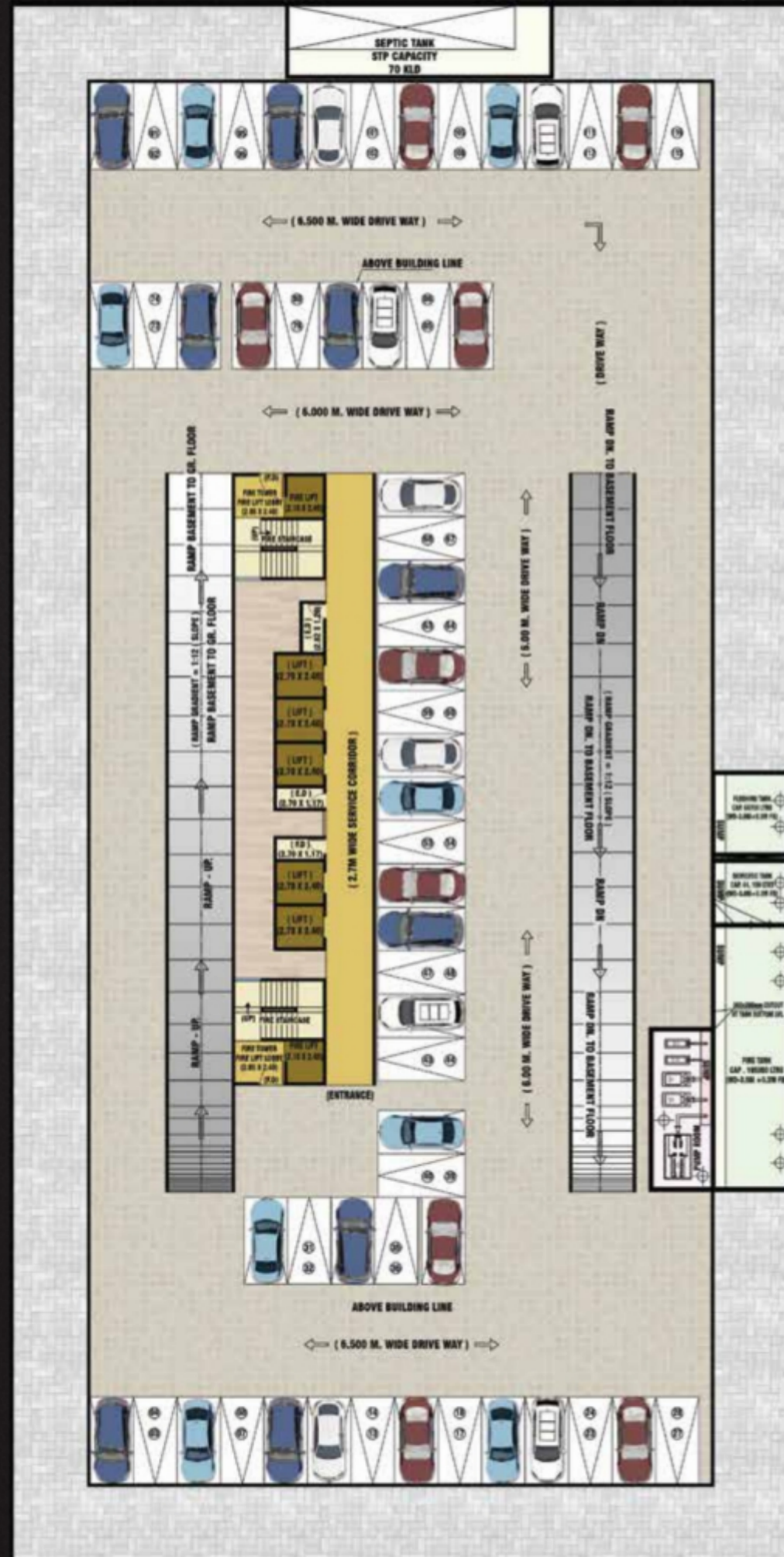
- UV reflective Quality Glass with Matching Structure
- High Tech Fire Fighting System
- Fire Exit Balconies as per regulations
- Fire Sprinklers in Common Areas and floor to floor Fire Protection
- Power Backup for Common Area
- Power Backup for 5 Lifts & 2 Service lifts
- Common Electrical Rooms on all Floors
- High Tech Security System (CCTV System)





# Basement Floor Plan For Parking

# Ground Floor Plan

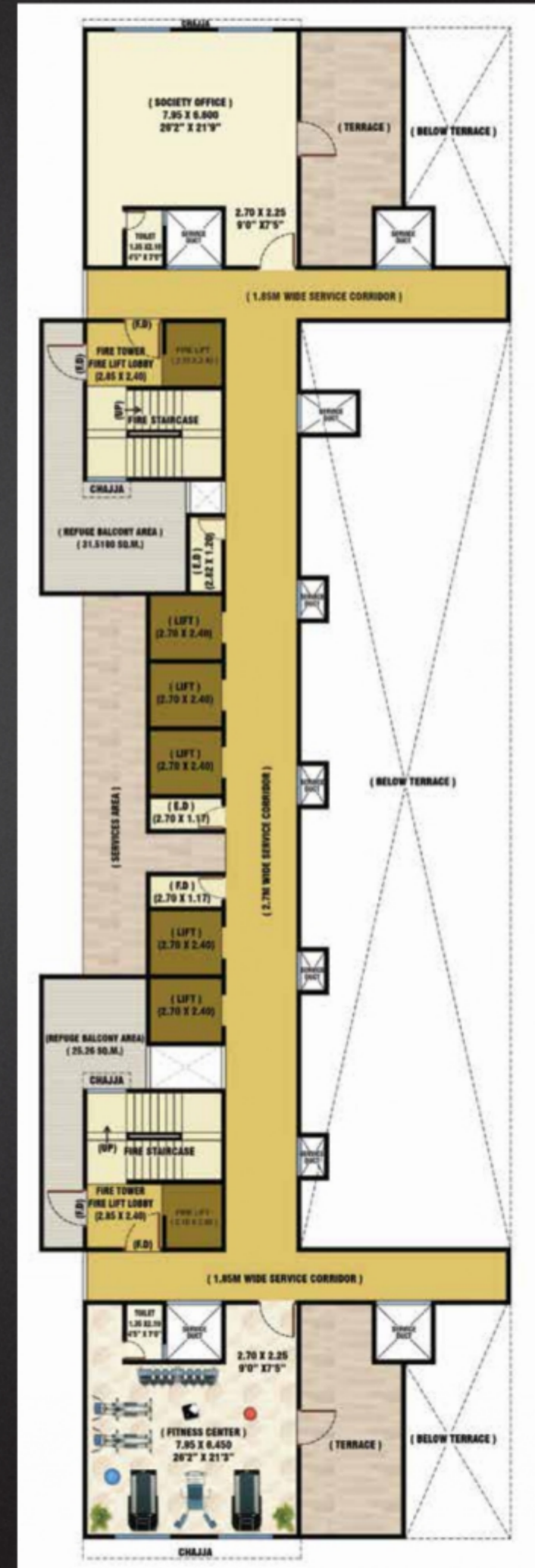




# 5th Floor Plan



# 6th Floor Plan





# 36th Floor Plan

# Isometric Plan 500 Sq Ft. Floor Plan



# Full Floor Plan

