

**dwārika  
valley**  
A HAFEEZ CONTRACTOR CREATION

**dwārika  
valley**  
A HAFEEZ CONTRACTOR CREATION

Neral



**हमारे सपनोंका घर, हमारी खुशियोंका घर**

Where my  
Happiness lives

*Serene & peaceful*  
environment



WORLD CLASS RESIDENCE

**dwarika  
valley**  
A HAFEEZ CONTRACTOR CREATION

Dwarika Valley a piece of art designed in such a way that it serves you with comforts of trending life style and lush green habitats.





## Complex Amenities



- Compound Wall with decorated Main Gate
- Checkered/premix Tiles in parking area & Paver Block around the building area
- PCC Internal Road with ample Street Lights
- Fitness Area
  - Badminton Court
  - Volley Ball Court
  - Basket Ball Court
  - Jogging Track
  - Senior Citizen Park
  - Kids Playing Area
- Advance Security Systems
  - CCTV in all lobbies
  - 24x7 Security Guards
- Club House with
  - Indoor Games
  - Community Hall
  - Swimming Pool
- Special Two-wheeler parking
- Society office
- Separate toilet for service staff
- Solar energy for outdoor lighting

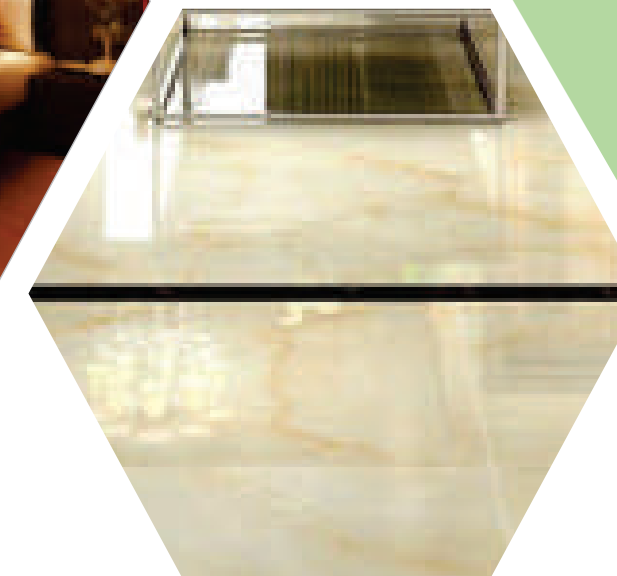
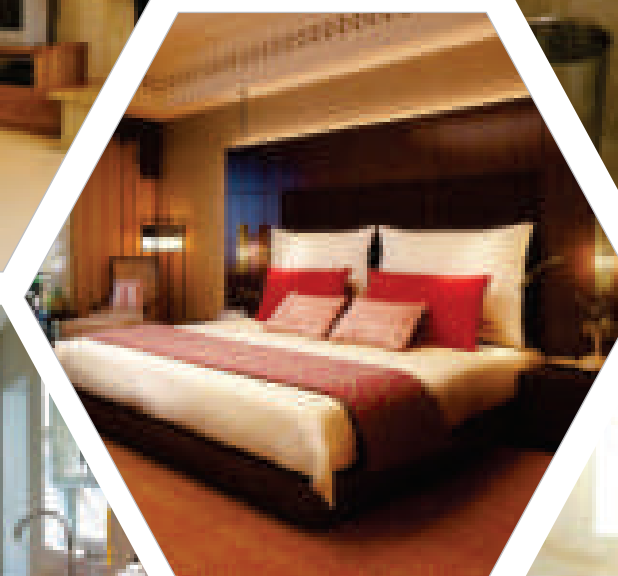
## Building Amenities

- Waterproofing with China Chips
- All Weather-Proof External Acrylic Paint
- Decorative Lobby
- Adequate Fire Protection Equipment
- Earthquake resistance building design
- Two Elevators per building. Total Ten elevator in the project



## Internal Amenities

- Living Room
  - Double Door Frame For Entrance
  - Plastic Emulsion Paint
  - Vitrified Tiles
- Bedroom
  - Sleeves in Beam for Split AC
- Bathroom / Toilets
  - Provision of Geyser Points
  - Branded bathroom Fittings
  - Anti-Skid Tiles
- Kitchen
  - 2 parallel kitchen platform
  - Provision of Water Filter & Exhaust fan point
  - 2 feet High Dado above & below platform
- Full height window in Hall & Bedroom
- Separate inverter points in all Units
- Laminated Finish Main door





*A piece of art by*  
~ Hafeez contractor





**dwarika**  
**valley**  
A HAFEEZ CONTRACTOR CREATION

## Neral - The Green Destination

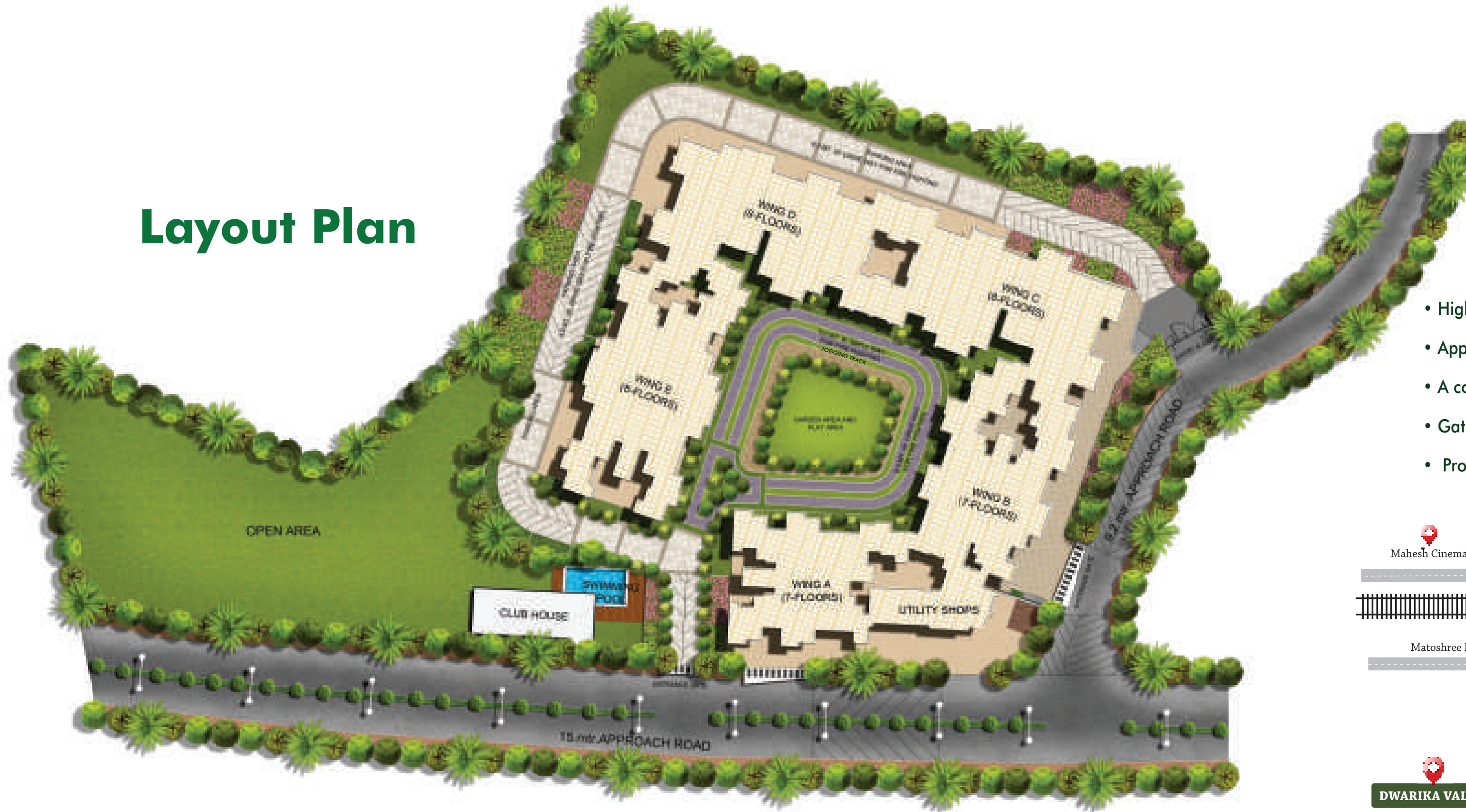
Situated on the outskirts of Mumbai, at only two hours drive, Neral invites you to discover the experience of blissful living. Engulfed in the the realms of the the great Sahyadris, rivulets, greenscape and the tourists' favourite destination - Matheran, the wonderful countryside proves to be a me change from the busy city life.

we have come up with this exceptional project that spread across 3.5 acres & offers you city life perks without disturbing the true beauty of nature.

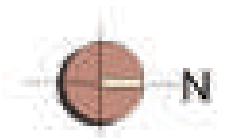
# dwarika valley

A HAFEZ CONTRACTOR CREATION

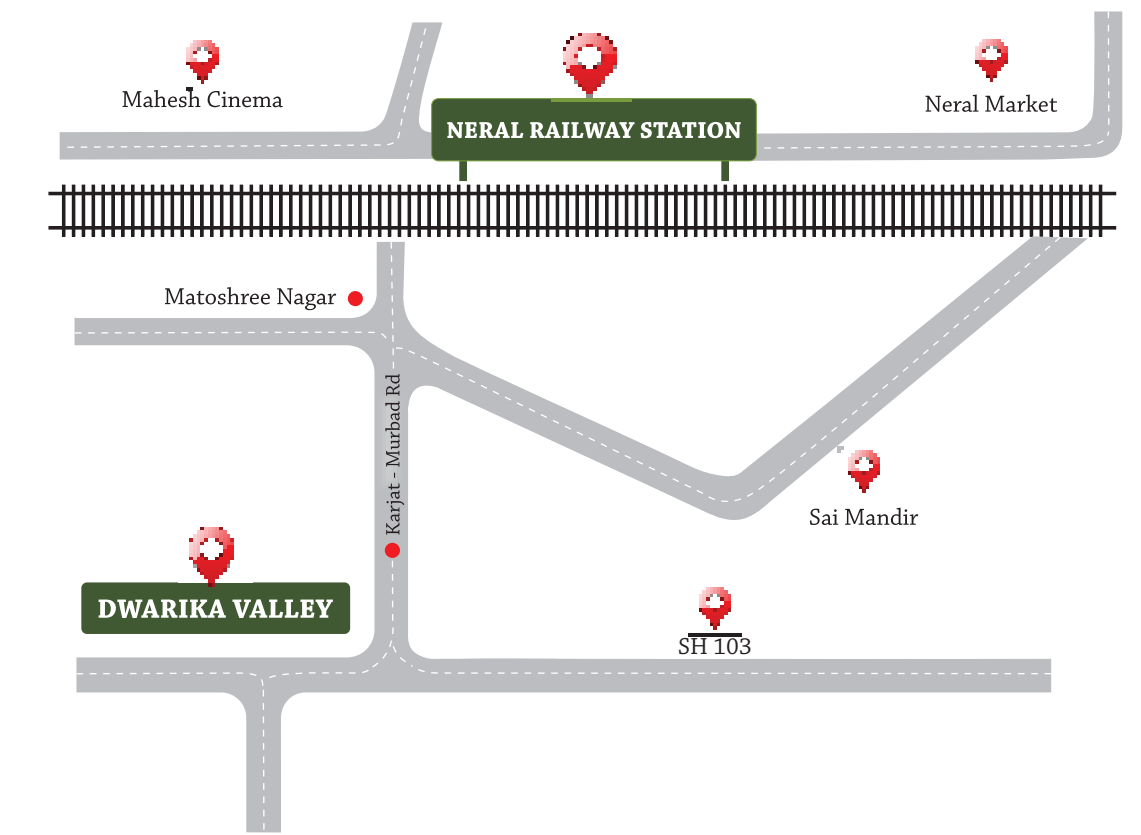
## Layout Plan



SITE PLAN



- High-rise 7/8 storeyed project in Neral
- Approx. 1.5 lakh sq.ft. plot area & 367 Dwelling units.
- A combination of 1RK, 1BHK & 2BHK Apartments.
- Gated Community - for enhanced security.
- Proximity to Neral Railway Station





# CONVENIENCES...

## AT DOOR STEP

DESTINATION  
OF CHOICE



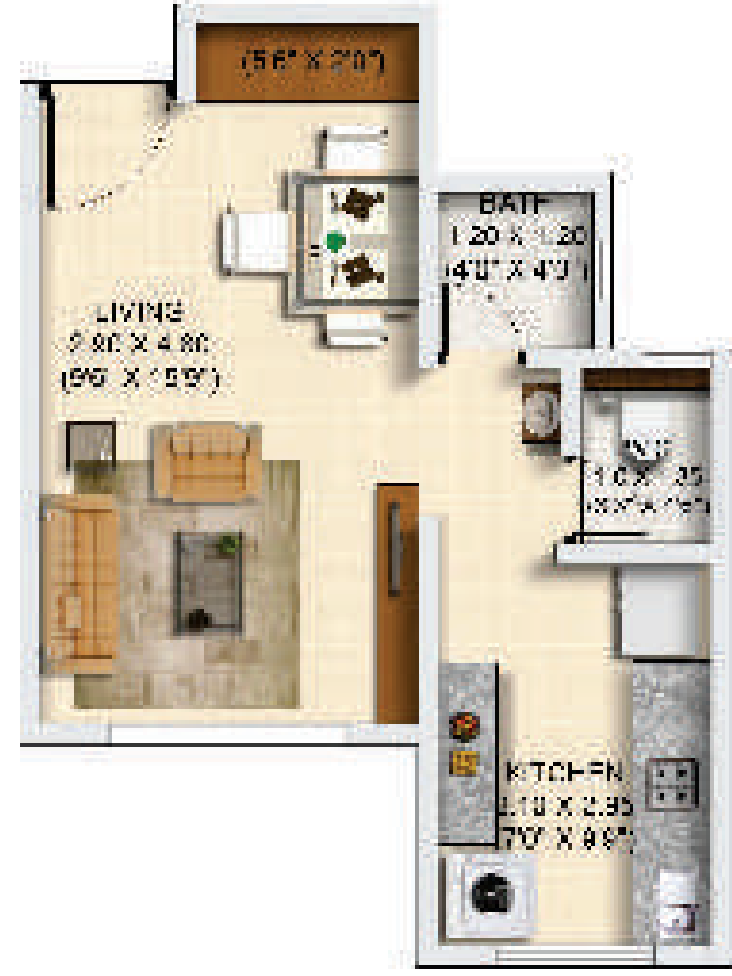
LOCATION  
ADVANTAGE



Dwarika valley is strategically located in the picturesque town of Neral near Matheran hill station.

- School, Colleges, hospital, super markets, theater at close proximity
- Approx. 300 meters walking distance from Neral railway station
- Approved state highway no. 103
- Local trains at good frequency from Neral
- Proposed Harbour Railway Line from Panvel To Karjat

1RK Apartment



1BHK Apartment

# 2BHK Apartment



