



Aastha

COZY APARTMENTS, ANANDAM WORLD CITY

RERA REG. NO. PCGRERA160718000552



If a lovely, cozy home is your heart's desire,
Well, we've got just the thing for you.

Welcome to a residential project where splendour and simplicity go hand in hand.
Where joys are plenty and comfort surrounds you. Where elegance is effortless
and everything is tailor-made to be a perfect fit for your dreams...

Welcome to this beautiful world called Aastha.

FUTURE DEVELOPMENT



Presenting

Aastha

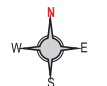
COZY APARTMENTS

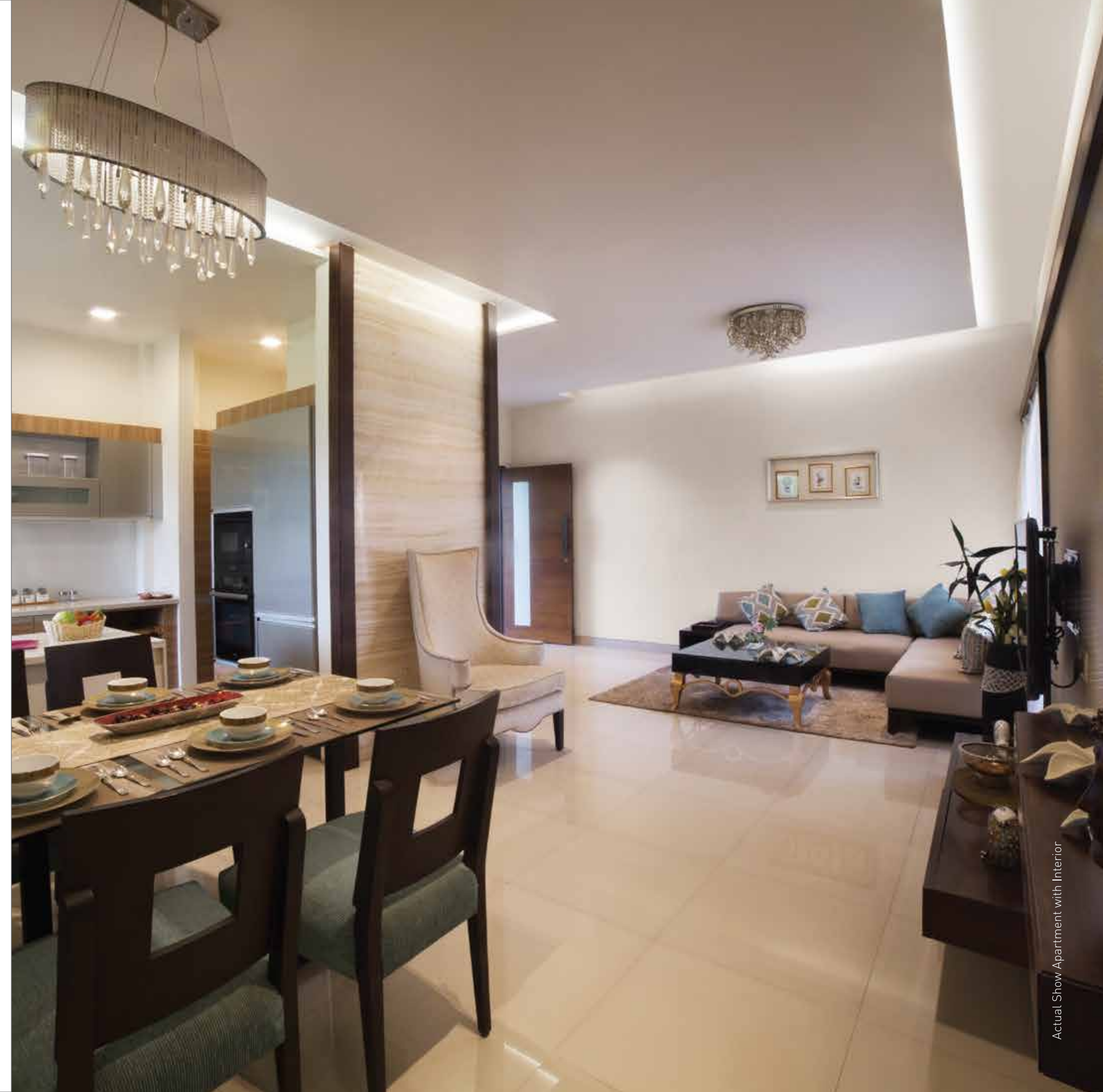
Located in the sprawling township of Anandam World City, Aastha is an affordable yet luxurious residential project that promises to be the perfect setting for a perfect family life. It boasts of 2 / 2.5 / 3 BHK residences in a 10 storey tower and a host of state of the art amenities. A perfect combination of ease and elegance, Aastha is everything you wanted in a home and more.



ANANDAM
WORLD CITY




 LAYOUT PLAN



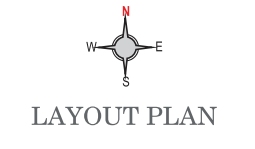
Actual Show Apartment with Interior



Aastha Amenities:
 Ten storied apartment
 Spacious parking
 Podium garden
 Two lifts
 Grand entrance lobby

Aastha Clubhouse:
 Swimming pool
 Badminton court
 Squash court
 Indoor Games
 Yoga & meditation
 Gym

Neighbourhood amenities:
 Majestic entrance gate
 Fountain area
 Pocket gardens
 Town gardens
 Two check point entry system
 Round the clock security system
 CCTV surveillance system
 24 hours water supply
 Wide road network
 Fire fighting system
 Storm water drainage system
 Sewerage system











THE PERFECT LIFE AWAITS...

APARTMENT SPECIFICATION

FLOORINGS

- Living / dining / drawing - vitrified tiles
- Bedrooms - vitrified / ceramic tiles
- Balconies - vitrified / ceramic tiles
- Utility area - vitrified / ceramic tiles
- All toilets - vitrified / ceramic tiles
- Kitchen - vitrified / ceramic tiles

DOOR / WINDOWS

- All doors - masonite / laminated flush door
- Door frames - sal wood
- Windows - aluminum windows

KITCHEN

- Granite counter with ss bowl sink
- Wall cladding with glazed tiles 2 ft. above counter
- Provision for aquaguard & exhaust

TOILET

- Sanitary ware - branded good quality
- CP fittings - branded good quality
- Wall cladding - vitrified / ceramic tile upto lintel level
- Basin counter - granite
- Provision for exhaust in all bathrooms

ELECTRICALS

- Modular switches - branded good quality
- Provision for AC points in all rooms

RAILINGS

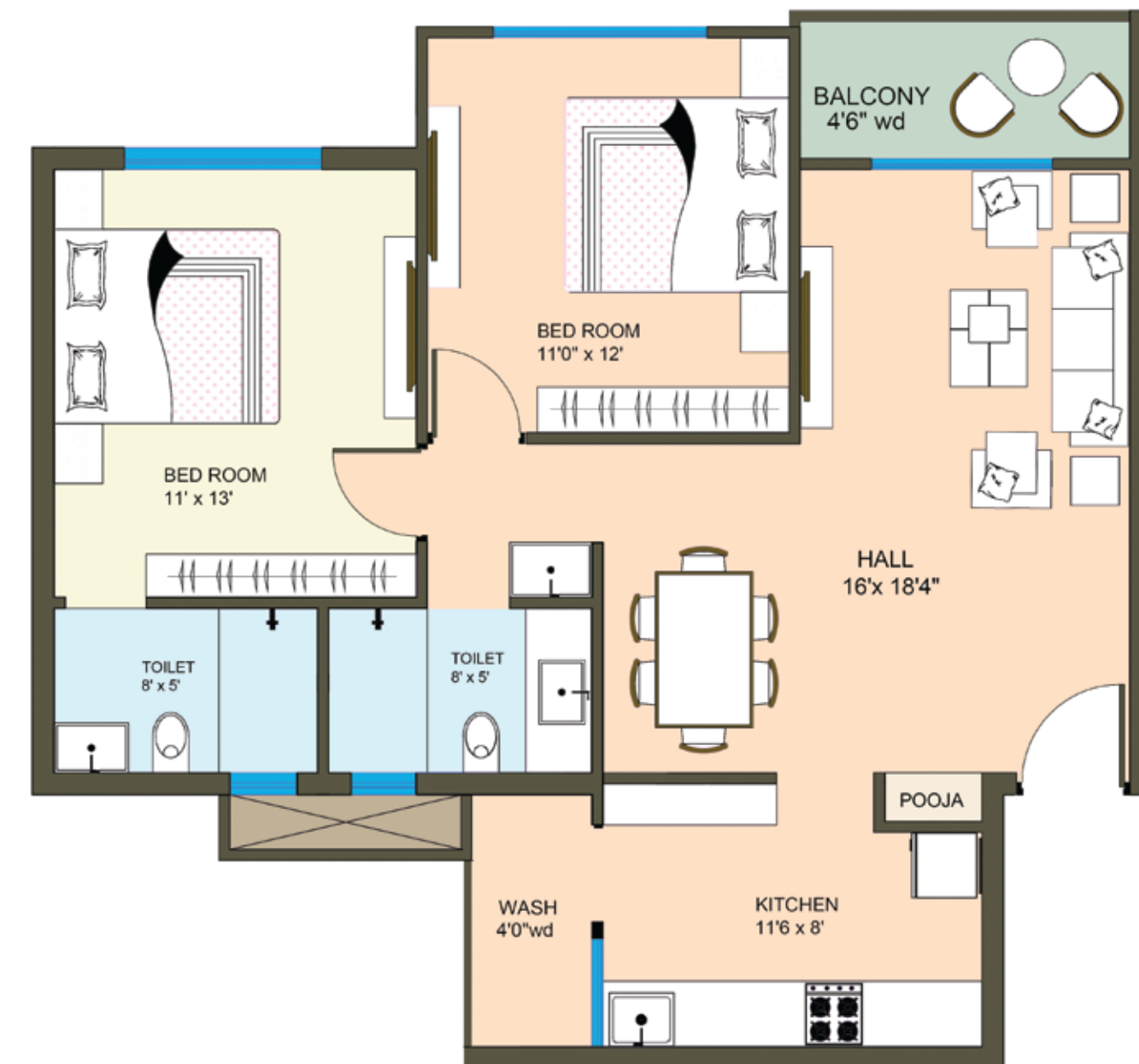
- M.S. painted railings

WALL FINISH

- Interior walls - putty finish
- Exterior walls - all weather proof paint

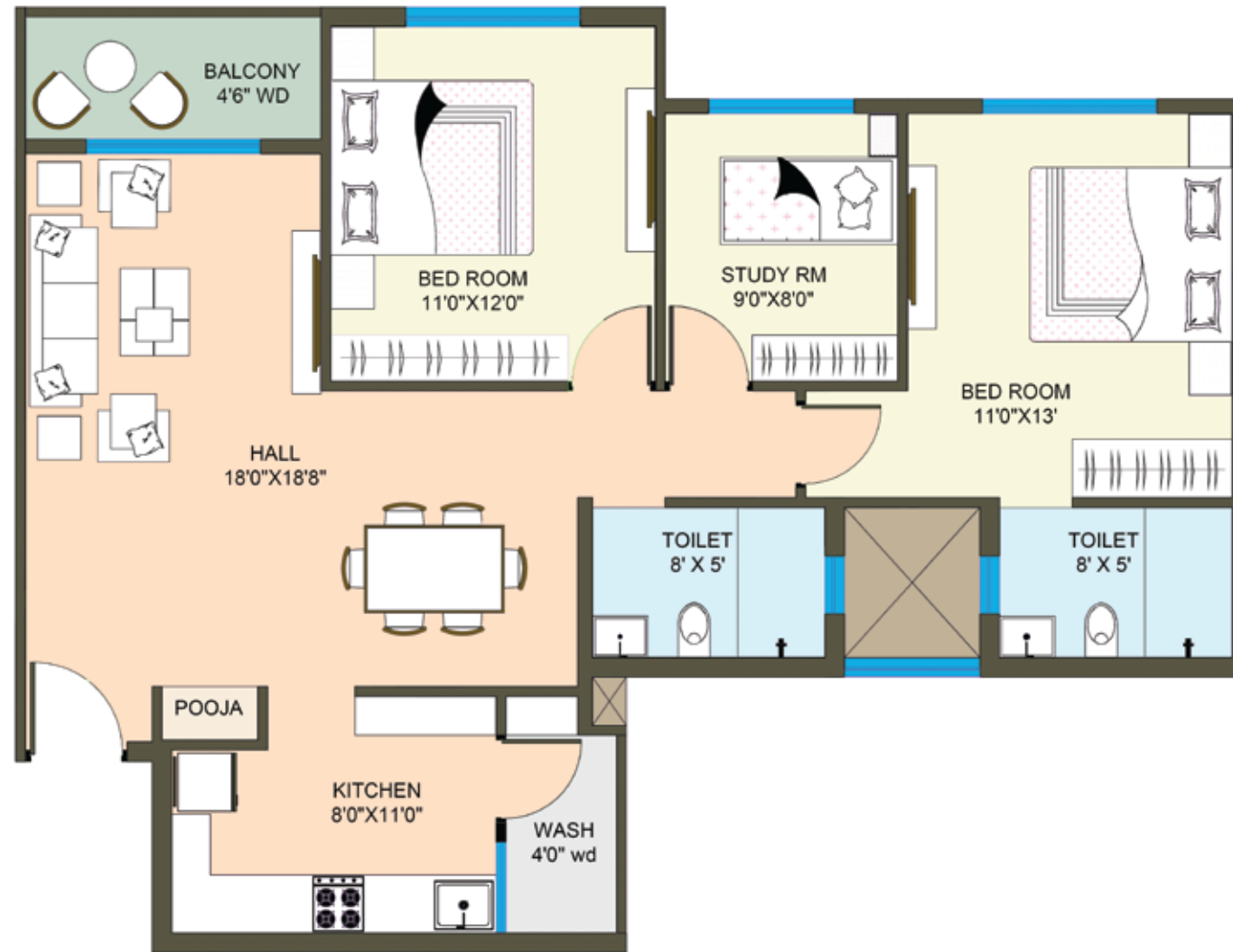
* The above specification may change subject to non-availability of materials.

Aastha | 2 BHK



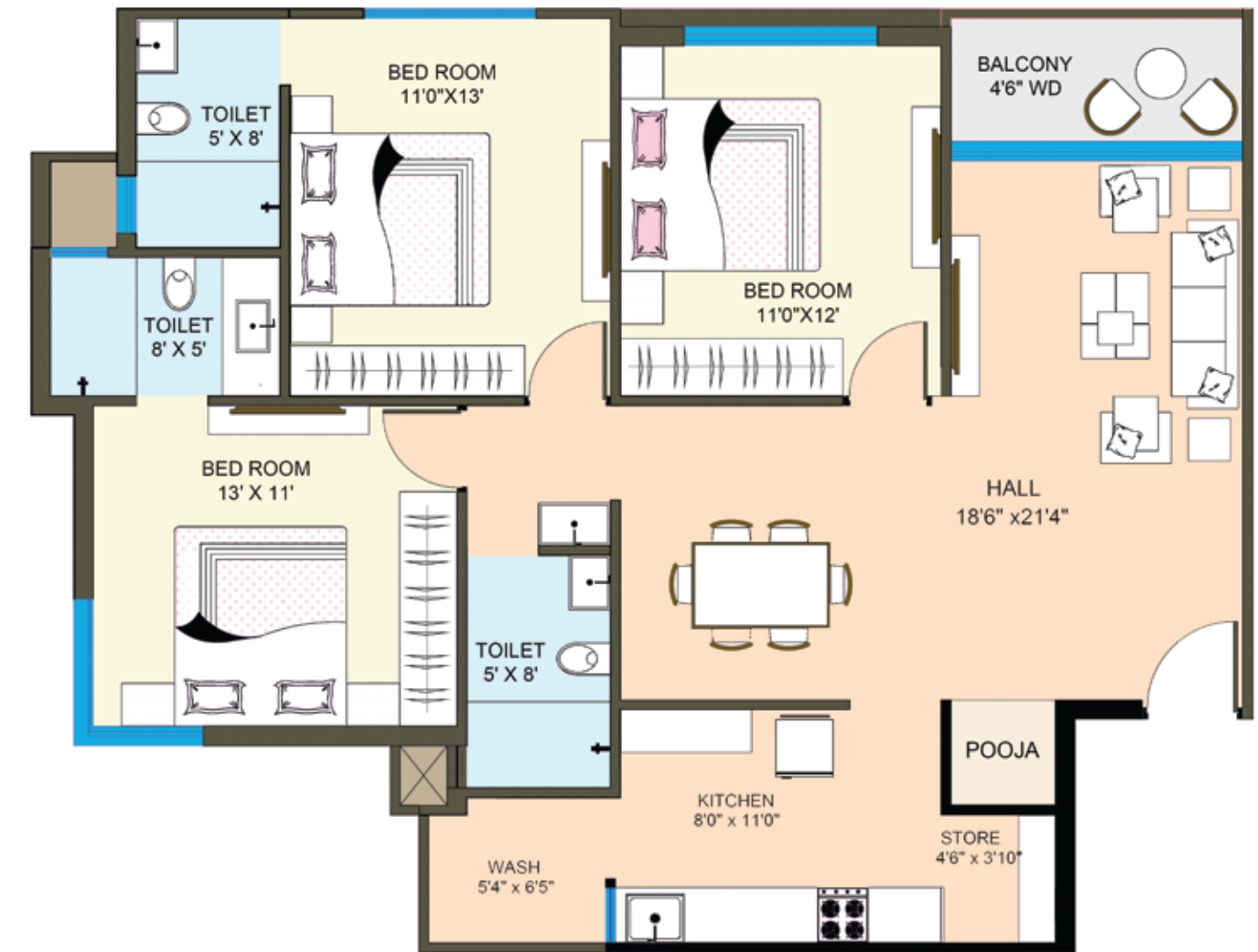
*The interiors, furniture, fittings, fixtures, etc. shown in the images/drawings are only artist's conception and not part of actual amenities provided. All Internal Dimensions of carpet area are from unfinished wall surface. Minor variations/ tolerance of 5% in carpet area may occur on account of design and/or construction exigencies. Conversion : 1Sq. Mt. = 10.764Sqft "

Aastha | 2.5 BHK



"The interiors, furniture, fittings, fixtures, etc. shown in the images/drawings are only artist's conception and not part of actual amenities provided. All Internal Dimensions of carpet area are from unfinished wall surface. Minor variations/ tolerance of 5% in carpet area may occur on account of design and/or construction exigencies. Conversion : 1Sq. Mt. = 10.764Sqft "

Aastha | 3 BHK



"The interiors, furniture, fittings, fixtures, etc. shown in the images/drawings are only artist's conception and not part of actual amenities provided. All Internal Dimensions of carpet area are from unfinished wall surface. Minor variations/ tolerance of 5% in carpet area may occur on account of design and/or construction exigencies. Conversion : 1Sq. Mt. = 10.764Sqft "



Majestic Gate



Central Townsquare



Wide Roads

A Neighbourhood Befitting Your Stature

It is often said that a residence is only as good as the neighbourhood it's in. And rightly so. A neighbourhood is the reflection of your stature and style. So, it comes as no surprise that a project as resplendent as Aastha, should be located in a neighbourhood that holds a mirror to its luxury. Anandam World City, one of the most coveted addresses in all of Raipur is a haven of 'good living'. It is a sprawling development that has countless attractions and amenities such as a majestic entrance, an extravagant clubhouse and also facilities for education, healthcare entertainment and more.

Located in the heart of Raipur, Anandam World City is the epitome of a happy and holistic life.



Private Villas



— COME EXPERIENCE —

Life at

ANANDAM
WORLD CITY



LOCATION MAP

- Anandam World City, Raipur is well connected with all key areas of Raipur.
- 15 kms from Airport
 - 9.5 kms from Railway Station
 - 8 kms from City Center Jaisthambh Chowk
 - 4 kms from Main Residential Colonies