



M/s KARYAN INFRA TECH LLP (Promoter of the Project) | RERA Regn. No.: UPRERAPRJ848589 | [www.up-rera.in](http://www.up-rera.in)  
Corp. Office: A-27, Third Floor, Sector-67, Noida, UP-201301. | Site Office: 1A, Sector-02 (Pinewood Enclave) Wave City, NH-24, Ghaziabad  
Contact: 9206-001-002 | Email: [info@karyaninfotech.co.in](mailto:info@karyaninfotech.co.in) | Web.: [www.karyaninfotech.co.in](http://www.karyaninfotech.co.in)

Disclaimer: Images in the brochure used for artistic impression to give the conceptual sense of possible lifestyle. It can be changed at the discretion of the developer and is not a legal commitment on design or specifications. | 1sq. mtr. = 10.764 sq. ft. and 1 acre = 4047 sq. mtr. (approx.). \* Terms & Conditions apply.



CityWalk

PROUDLY BROUGHT TO YOU BY:



WE COLLABORATE | WE INNOVATE | WE EXCEL

Karyan Infratech is backed by over 15 years of experience and expertise of the Karyan Group along with select promoters of the Saviour Group - premier real estate developers of Delhi/NCR, offering residential, commercial, retail projects and warehousing in PAN India.



*Happiness*  
ALL AROUND

Artistic Impression



# STUDIO LOTUS

NEW DELHI

# AWARD WINNING DESIGN FIRM

DEVELOPED ULTRA MODERN FACADE FOR THE PROJECT

Studio Lotus is an international award-winning design firm. They master in planning, architecture and interiors of large-scale development and commercial spaces, hotels and resorts, government projects. The most significant clientele includes Max Estates, Royal Enfield, Godrej Properties, DLF, RAAS Group of Hotels, Taj Hotels, Radisson Hotels, Aloft Hotels, Oberoi Realty & many more renowned companies.



Artistic Impression

# A PLUS DESIGN ASSOCIATES

A Plus Design Associates is accomplished in the field of planning, design, and execution of urban projects. They have designed and built around 7 million sq. mtr. built-up area which includes townships, commercial complexes, residential developments, hospitals and entertainment centers.

# CESPL

With over 33 years of experience, in mechanical, electrical, plumbing, engineering design and consultancy, CESPL has handled more than 500 projects which include group housing, commercial, institutional and township planning projects.



Artistic Impression

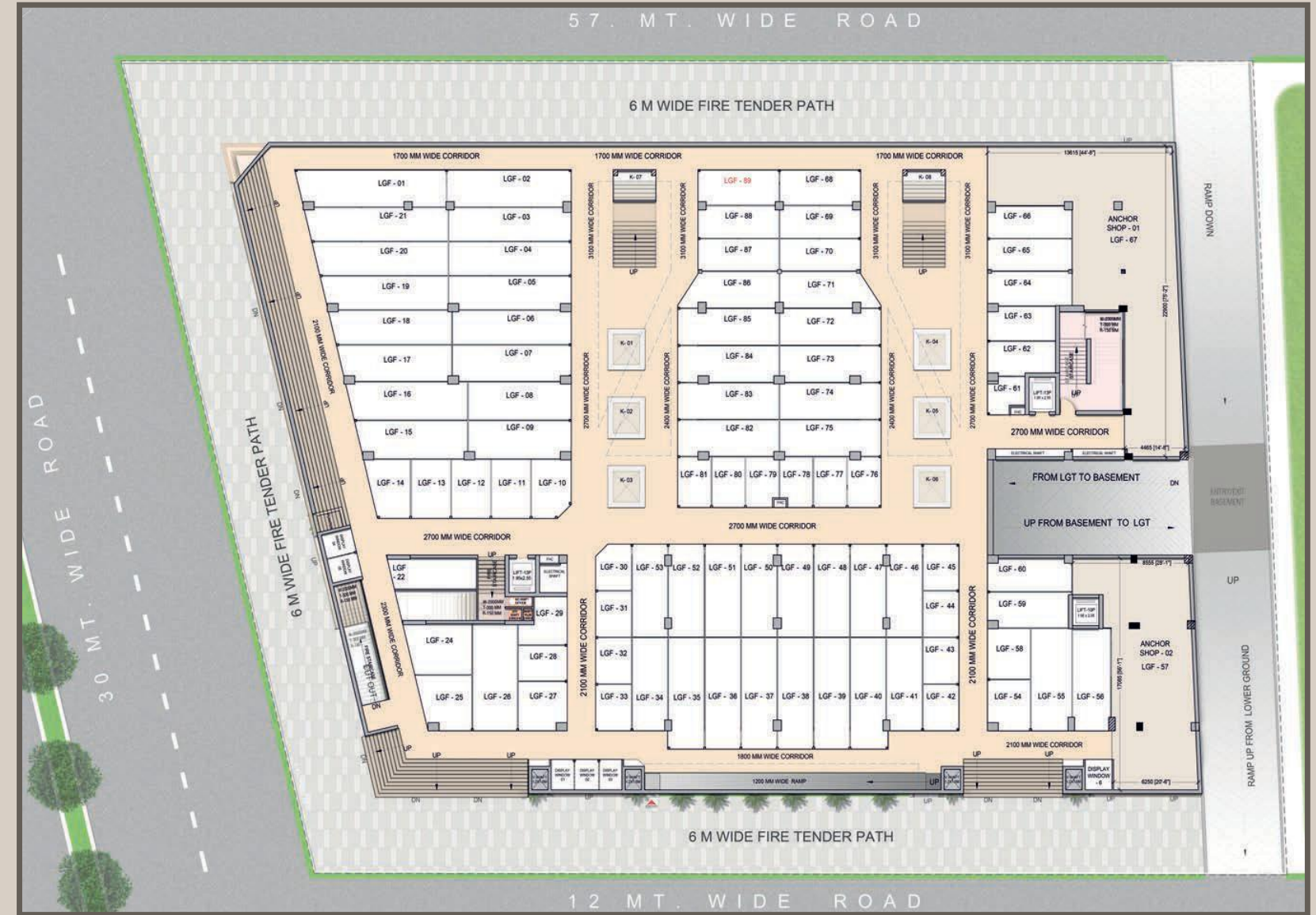
# EXCELLING EXPECTATIONS



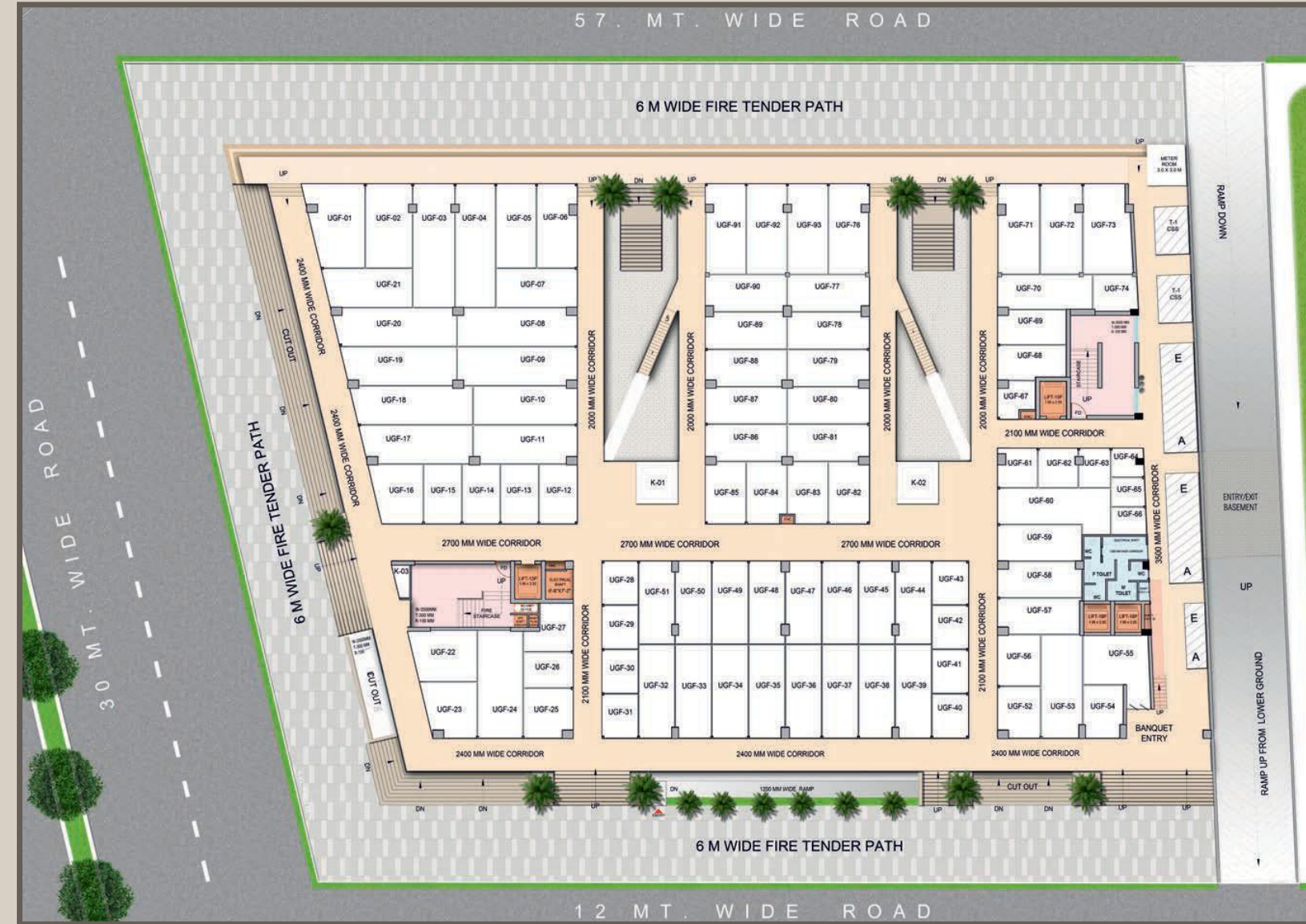
LOCATED AT WAVE CITY WITH MODERN AMENITIES  
& STATE OF THE ART INFRASTRUCTURE

 <p>PRIME LOCATION AT NH-24 14 LANE EXPRESSWAY</p>	 <p>PREMIUM LIFESTYLE BRANDS</p>	 <p>AMPLE CAR PARKING SPACE</p>	 <p>RAIN WATER HARVESTING</p>
 <p>WIDE CORRIDORS</p>	 <p>DEDICATED LIFTS &amp; ESCALATORS</p>	 <p>SURROUNDED BY DEVELOPED SECTORS</p>	 <p>BEAUTIFULLY DESIGNED GLASS FACADE BY LOTUS DESIGN</p>
 <p>LUSH GREEN LANDSCAPING</p>	 <p>24X7 POWER BACKUP</p>	 <p>24X7 ADVANCED SECURITY</p>	

LOWER GROUND FLOOR PLAN



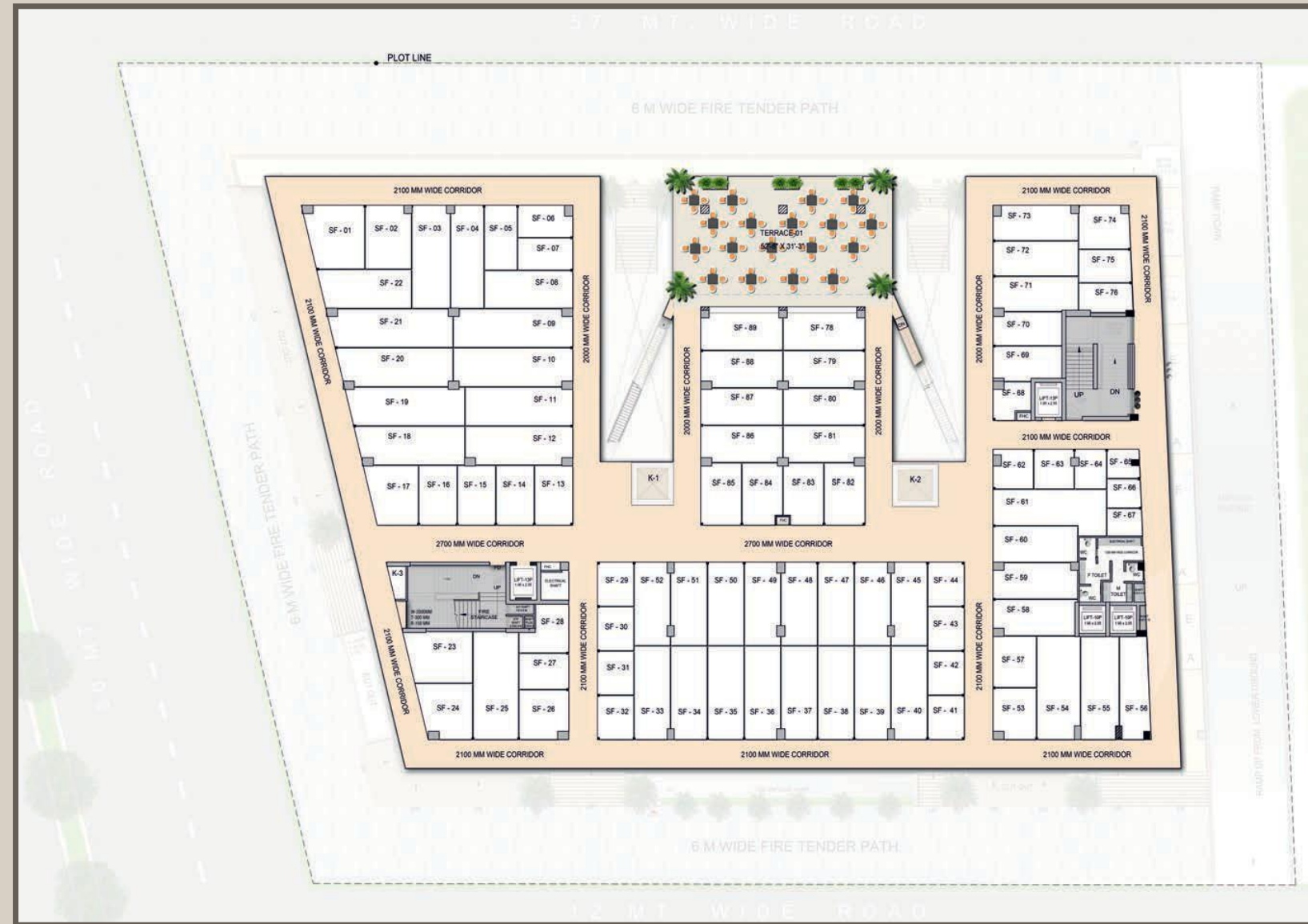
UPPER GROUND FLOOR PLAN



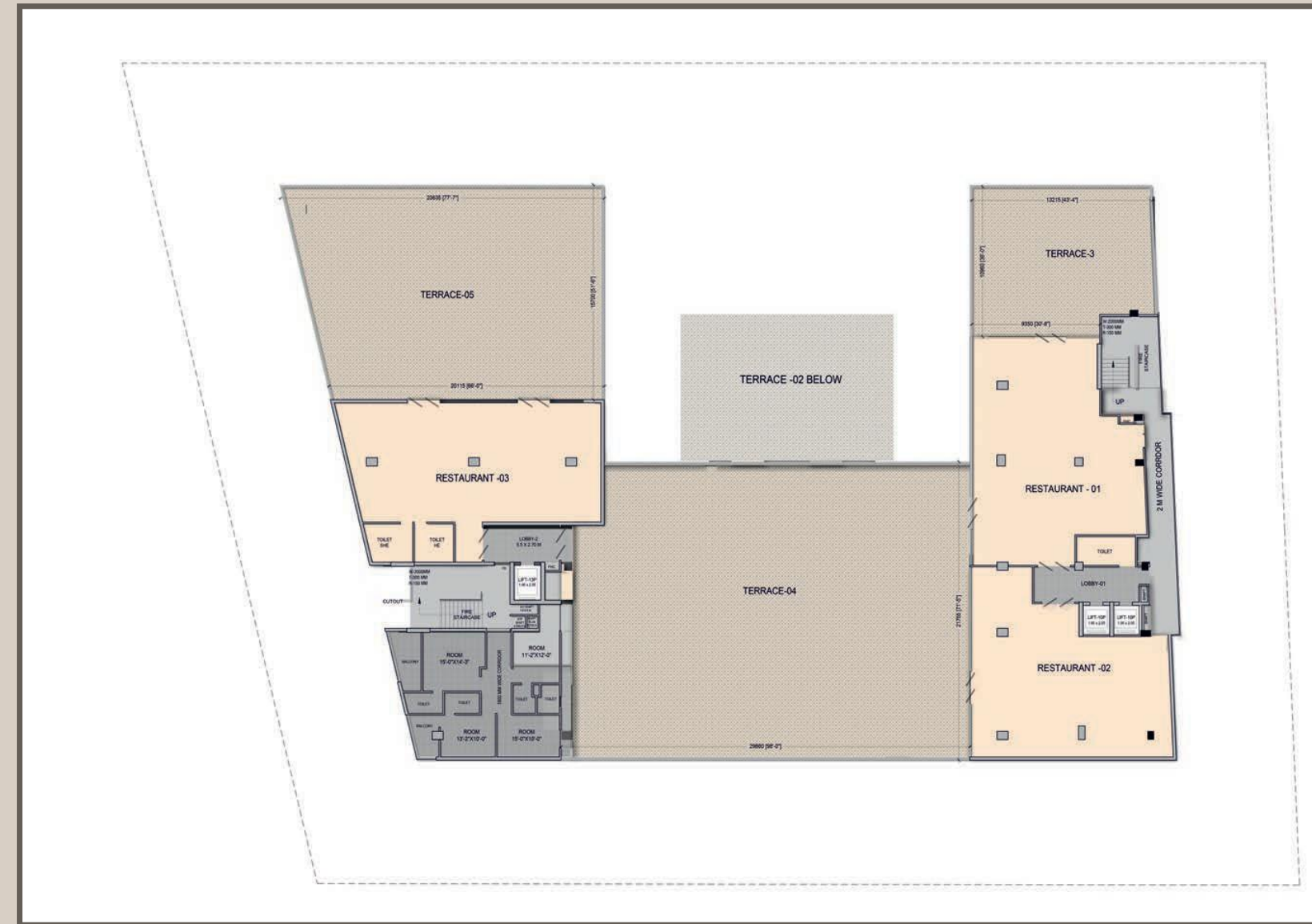
FIRST FLOOR PLAN



## SECOND FLOOR PLAN



## FOURTH FLOOR PLAN



STRATEGICALLY POSITIONED

AT NH 24

PIVOTAL

TO WAVE CITY

A 4500 ACRE TOWNSHIP, LARGEST IN NORTH INDIA.



KARYAN

CityWalk



5 min from Eastern Peripheral Expressway



20 min drive from Delhi



15 min from Ghaziabad Railway Station



5 min from Manipal Hospital (Columbia Asia)

KARYAN

SAVIOUR