



ONE  
INTERNATIONAL  
DISTRICT  
KALYAN'S FINEST LIFESTYLE DESTINATION



# PREMIUM OFFICE AND COMMERCIAL SPACES STARTING FROM **400 Sq.ft** at **₹ 75 Lakh\*** onwards



Artist's Impression

A JOINT VENTURE WITH  
**Mehta**  
Your space. Your story.



This project is registered with Maharashtra Real Estate Regulatory Authority with MahaRERA registration number **P51700056196**, **P51700056000** and **P51700055668** is available on the website - [maharera.mahaonline.gov.in](http://maharera.mahaonline.gov.in)



# WORLD-CLASS WORKSPACES

## Locational Advantages

- Shahad Railway Station - 02 mins
- Ulhasnagar Railway Station - 10 mins
- Alibaug Vasai Corridor – 15 mins
- Airport - 30 mins
- Kalyan Railway Station - 10 mins
- Proposed Metro Station - 10 mins
- Proposed Navi Mumbai International

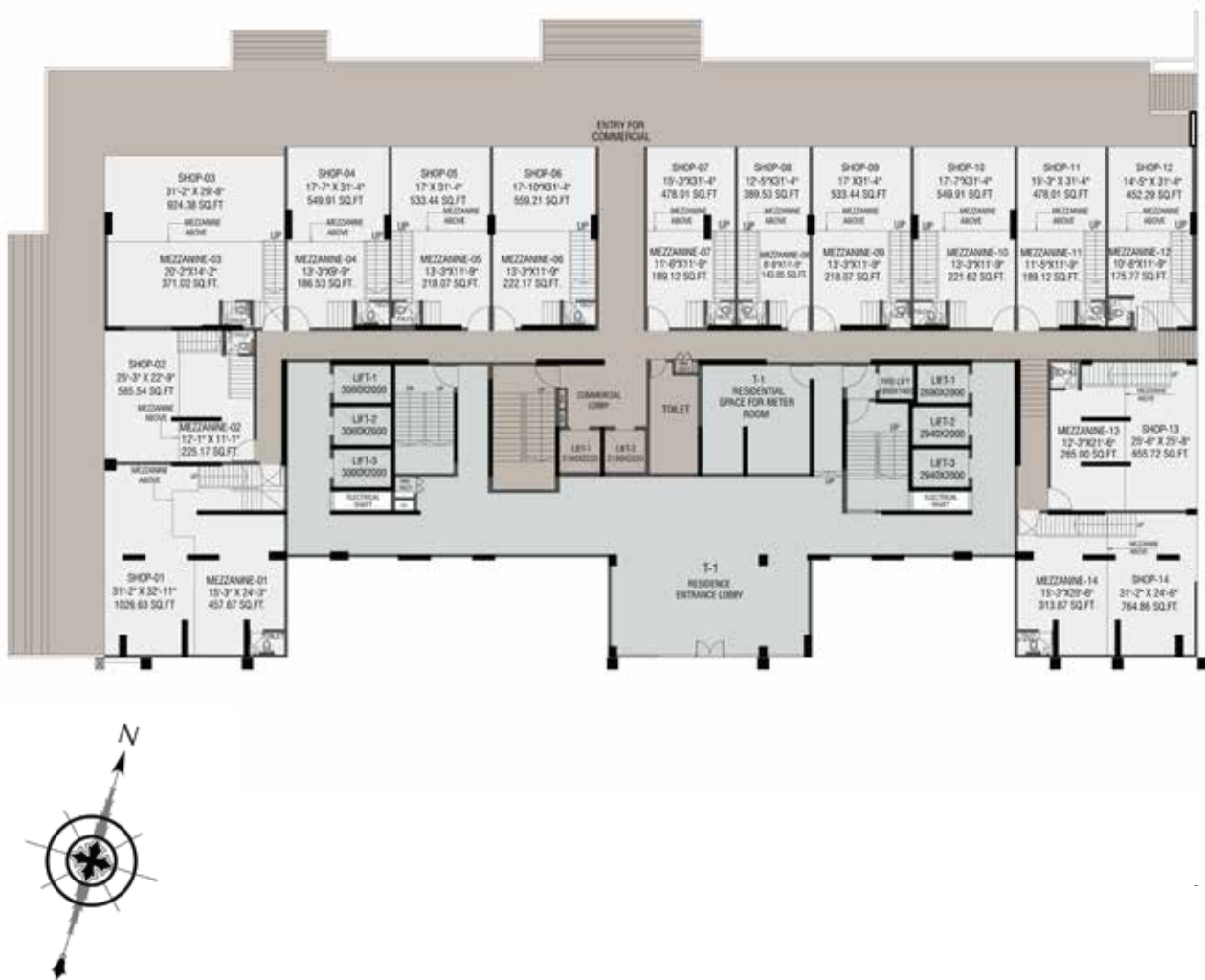
Reference Image.

## Where Opportunities Become MILESTONES

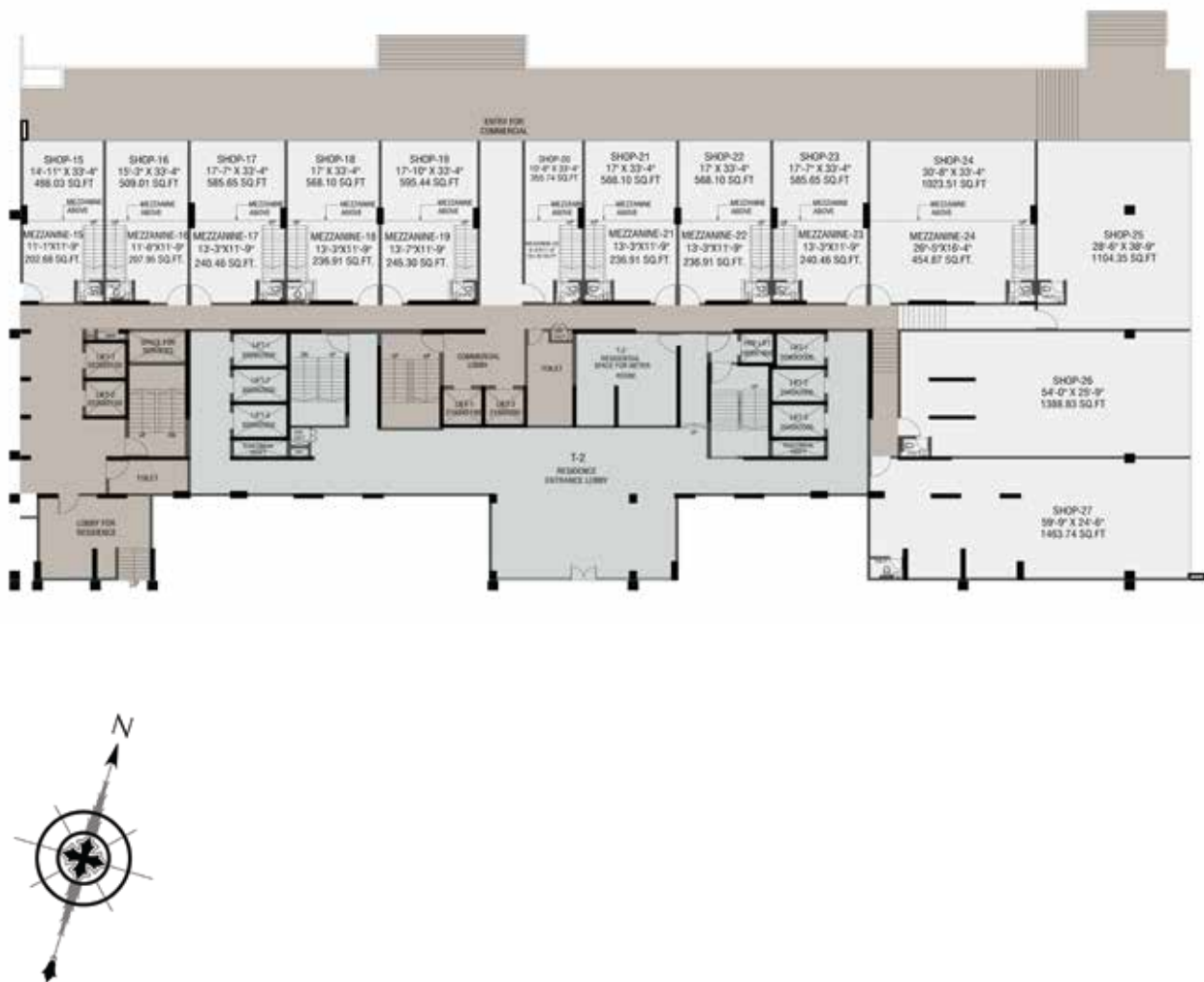


Artist's Impression

GROUND LEVEL PLAN TOWER-1



GROUND LEVEL PLAN TOWER-2



# GROUND LEVEL PLAN TOWER-3



# 1ST & 2ND COMMERCIAL FLOOR PLAN TOWER - 1





# 1ST & 2ND COMMERCIAL FLOOR PLAN TOWER - 2



# 1ST & 2ND COMMERCIAL FLOOR PLAN TOWER - 3





ONE  
INTERNATIONAL  
DISTRICT  
KALYAN'S FINEST LIFESTYLE DESTINATION



# Creating Landmarks is our LEGACY



55+ Years



Presence in  
2 Countries & 6 Cities



100+ Projects  
Delivered



31 million Sq. Ft.  
Delivered



46,000+  
Happy Families

A JOINT VENTURE WITH  
**Mehta**  
Your space. Your story.



This project is registered with Maharashtra Real Estate Regulatory Authority with MahaRERA registration number **P51700056196**, **P51700056000** and **P51700055668** is available on the website - [maharera.mahaonline.gov.in](http://maharera.mahaonline.gov.in)