



EXPRESS
ASTRA

There's **More** To Life





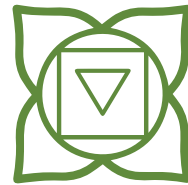
EXPRESS ASTRA

Life here is more than just about convenience and comfort; it is the ultimate bliss of living to the fullest. Express Astra is an epitome of good living where the elements of nature are perfectly amalgamated with Vastu Shastra.

Express Astra is a complete life experience. Here 'Panch Tattva - The Essence Of Life' forms the foundation of an incredible lifestyle. Together Earth, Water, Fire (Light), Air and Space are the foundations of living life full of joy and ecstasy. It offers everything you need to live, an elevated lifestyle, including ample greenery, good ventilation, beautiful water bodies, clean environment and abundant space.

With grand architecture and world-class facilities, living here will fill your life with freshness, vibrancy, prosperity, love and leisure.





EARTH is the life bearer which represents a solid state - the soil, flora and fauna.

MORE VERDURE

A harmonization of Nature and Modern Living, Express Astra boasts of beauty and bliss. The expanse of greenery in and around Express Astra enhances the living experience with fresh air.

Vaastu compliant layout

Signature orchard with seating

Beautiful landscaped garden

75% open green area

**Central landscaped greens
with flower beds**





WATER is the driving force of nature. It has a purifying force which keeps us in spirit.

MORE SPARKLE

Water is crucial for our existence, it is an everlasting source of inspiration to become versatile and fluid with limitless boundaries. Our Swimming Pool and Fountain add a sense of bliss to the landscape, whilst becoming a perfect escape spot from the mundane life in quest of joy.

Swimming pool with separate pool for children

Cascading wall

Rain water harvesting





FIRE discards darkness and welcomes light. Sunrays are the 'Light Of Life' filling everything with joy.

MORE SUNSHINE

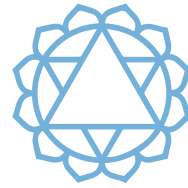
With sunlit homes, reduce your power consumption and welcome the sunrays each morning with open arms. The natural sunlight promotes a healthy living environment, which is rare to find in the compact homes of urban settlements.

Sunlit apartments for healthy living.

Enjoy winter sun

Gold rated green building





AIR is symbolic to the liveners that stimulates our consciousness to rekindle our mind, body and soul.

MORE VENTILATION

At Astra, your home is designed to facilitate ample ventilation, which is crucial for a fresh and clean environment. Move to a ventilated space that promotes health and well-being, and ditch the compact urbane life.

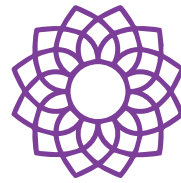
Ventilated interiors for a healthy environment

Large glass windows

Airy rooms







SPACE is symbolic of peace and freedom. It is necessary to live a quality life.

MORE CAPACIOUSNESS

Living in a neighborhood that allows you the space to move freely is truly a blessing. Express Astra will offer just this, away from the hustle and bustle. Come home to spaciousness and let the child in you - Out.

Designated hangout spots

Only 2/4 flats on each floor in every tower

Kids play area with separate TOT LOT

Jogging track

Corner plot with wide approachable roads



EXPRESS
ASTRA





CLUB KOSHA

40,000 SQ. FT.

Just like the five Kosha's that encapsulate our existence, our residential club is built to facilitate perfect harmony of the five basic elements to lead an incredible life. It is an amalgamation of bliss, activity, wellness, comfort, and joy.



EXPRESS BUILDERS



EXPRESS
ASTRA



CLUB
KOSHA


Euphoria Of Life

Our clubhouse brings you close to life's euphoria with amenities that make living at home more enjoyable than ever; while our Baoli and Prayer Area within the premises add life to every celebration and festival.

 **State-of-the-art Gymnasium**

 **Yoga Room**

 **Banquet Hall**

 **Steam/Sauna**

 **Space For Restaurant/Coffee & Tea Lounge**

 **Multipurpose Room**

 **Dance & Zumba Room**

 **Kids Play Area**
(Swings, Slides etc.)

 **Swimming Pool**
(Separate Kids Pool)

 **Mini Movie Screening Hall**

 **Indoor TOT LOT**

Indoor Games
(Chess, Carrom)

 **Cricket Net Practice**

 **Temple**

 **Pool Table**

 **Badminton Courts**
(Indoor & Outdoor)

 **Baoli**

 **Guest Rooms**

 **Lawn Tennis**

 **Jogging Track**

 **Card Room**

E-Gaming

TT Tables In Each Tower



LEGENDS

- | | |
|-----------------------------------|-----------------------|
| 01 Vehicular Entry To Housing | 19 Baoli |
| 02 Gaurd Hut | 20 Hedge |
| 03 Pedestrian Entry For Housing | 21 Pavillion |
| 04 Vehicular Exit | 22 Cascade feature |
| 05 Bond Street | 23 Hangout spot |
| 06 Pedestrian Plaza | 24 Grand staircase |
| 07 Public Entry To Bond Street | 25 Swimming pool |
| 08 Security Gate | 26 Kids swimming pool |
| 09 Outdoor Badminton Court | 27 Pool Deck |
| 10 Cricket Pitch | 28 Club |
| 11 Lawn Tennis Court | 29 Drop off |
| 12 Lawn | 30 Cul-de-sac |
| 13 Signature Orchard with seating | 31 Interactive spaces |
| 14 Pedestrian pathway | 32 Parking |
| 15 Feature wall | 33 Jogging track |
| 16 Temple | |
| 17 Sacred portal | |
| 18 Signature peepal tree | |

- 2 BR + TOILET
- 3 BR + 2 TOILET (SMALL)
- 3 BR + 2 TOILET
- 3 BR + 3 TOILET + POWDER ROOM



SITE PLAN

UNIT TYPE - 01

3 BEDROOM + 3 TOILET + POWDER ROOM

SUPER AREA- 2005 SQ. FT.

RERA AREA- 107.361 SQ. MTR.

BALCONY AREA- 30.114 SQ. MTR.





EXPRESS BUILDERS

UNIT TYPE - 02

3 BEDROOM + 2 TOILET
SUPER AREA- 1570 SQ. FT.
RERA AREA- 87.893 SQ. MTR.
BALCONY AREA- 16.288 SQ. MTR.



EXPRESS
ASTRA

UNIT TYPE - 03

3 BEDROOM + 2 TOILET (SMALL)

SUPER AREA- 1350 SQ. FT.

RERA AREA- 73.746 SQ. MTR.

BALCONY AREA- 15.426 SQ. MTR.





EXPRESS BUILDERS

UNIT TYPE - 04

2 BEDROOM + 2 TOILET
SUPER AREA- 1150 SQ. FT.
RERA AREA- 64.213 SQ. MTR.
BALCONY AREA- 12.088 SQ. MTR.



EXPRESS
ASTRA

SPECIFICATIONS



STRUCTURE

- Earthquake resistant R.C.C. frame structure using Aluminum Shuttering.



FLOORING

- Drawing/Dining/Bedroom & Kitchen: Vitrified Tiles.
- Master Bedroom: Laminated Wooden Flooring.
- Bathrooms & Balconies: Anti Skid Tiles.



ELECTRICAL

- Modular switches, sufficient light and power points.
- Cable TV and telephone points in drawing room and master bedroom.
- Copper wires in concealed PVC conduits.
- 100% power back-up in common areas.



TOWER LOBBY

- High end specs. in common areas.



DOORS & WINDOWS

- UPVC/Aluminium windows.
- Main door: both side laminated door.
- All other doors shall be duly painted/laminated.



KITCHEN

- Polished granite kitchen counter.
- Ceramic glazed tiles dado up to 2 feet height upon kitchen counter.
- Stainless steel sink with drain board.



INTERNAL & EXTERNAL FINISH

- Oil bound distemper in pastel shades on inner walls.
- POP punning/Putty on walls in drawing, dining, and bedrooms.



TOILETS

- Provision of hot and cold water supply in all toilets.
- Ceramic glazed tiles dado up to 7 feet height.
- White sanitary ware.



LIFTS

- 2/3 Spacious decorative lifts in all towers.



MORE CONNECTIVITY

The **strategic location** of your new home will certainly reduce your travelling woes. Express Astra is in proximity to prominent locales of **Delhi NCR**, helping you commute with ease.





EXPRESS BUILDERS

45 YEARS OF LEGACY

THE EXPRESS GROUP

When it comes to premium commercial and residential properties, Express Builders has been standing tall with a reputation unlike any in the league. With properties spread nationwide, we are striving to construct infrastructure with a promise of quality and commitment of a lifetime. With more than **70** projects delivered till date, we boast of an exemplary track record of 100% completion and satisfaction across the board. We have a wide footprint with prominent projects in cities such as Delhi, Noida, Bangalore and Hyderabad.

From on-time delivery to world-class architecture, we are moving towards the next level of enriching our legacy with Express Astra. The project boasts of exceptional features that can certainly fulfill the dreams of modern homebuyers.





EXPRESS BUILDERS

PAN INDIA COMPLETED PROJECTS

DELHI

AASHIRWAD ENCLAVE
EXPRESS BUILDING
EXPRESS MARKET - I
EXPRESS MARKET -II
EXPRESS MARKET - III
EXPRESS PLAZA - I
EXPRESS PLAZA -II
EXPRESS TOWER

NOIDA

EXPRESS ZENITH

VAISHALI

EXPRESS APARTMENTS

INDIRAPURAM

EXPRESS GARDEN
EXPRESS MARKET

MORADABAD

SUPER BAZAR

SONIPAT

EXPRESS CITY
EXPRESS HOMZ
EXPRESS ROYAL

HYDERABAD

EXPRESS APARTMENTS

BANGALORE

DAFFODILS
EXPRESS APARTMENTS
EXPRESS ELEGANCE
EXPRESS HOUSE
EXPRESS NEW CITY
EXPRESS RESIDENCY
GITANJALI APARTMENTS
GITANJALI CORNER
GITANJALI LAYOUT
PALM COURT

ONGOING PROJECTS

NOIDA

EXPRESS ASTRA
EXPRESS ZENITH 2

SONIPAT

EXPRESS ENCLAVE
EXPRESS VILLAS

VASUNDHARA

EXPRESS ONE



EXPRESS ONE
VASUNDHARA



EXPRESS ZENITH
NOIDA



EXPRESS CITY SONIPAT



EXPRESS
ASTRA

TESTIMONIALS



- ★ I have taken over keys of my flat. It gives me immense pleasure to be a part of the Express Family. Thanks to the Director and his team, without their support it was not possible to own such a flat built with best of material and specifications. Thanks to Express team for their support and advice, well done!

- GARUDA DHWAJAN
Palm Court, Bangalore

- ★ Express Builders not only provide a place to live, it provides a better way of living with good quality of homes and services.

- N.K SINGH
Daffodils, Bangalore

- ★ We have been dealt by staff of Express Builders very well with full support, transparency and friendly manner. Overall we are happy to be a part of Express Family.

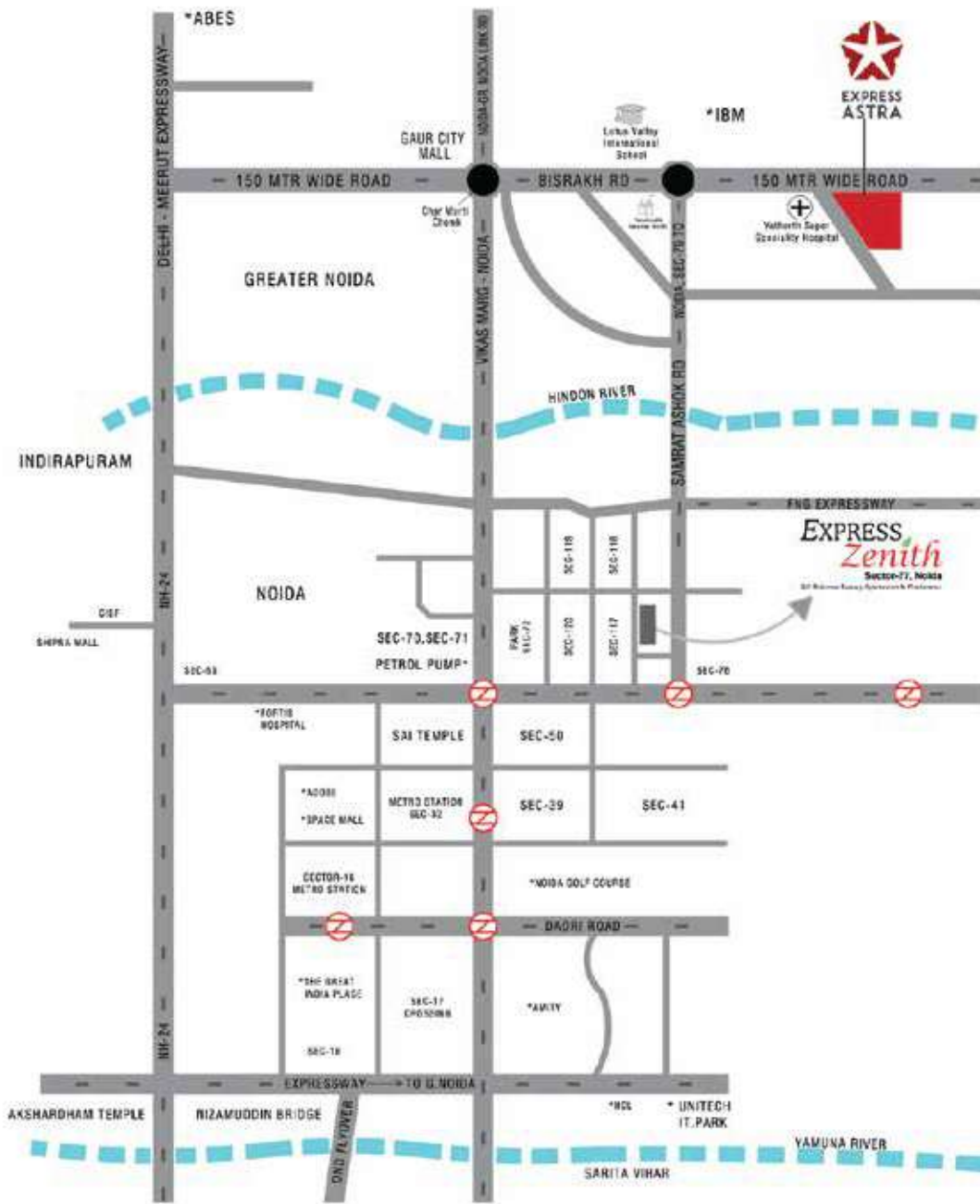
- G. RANGANATHAN
Express Elegance, Bangalore

- ★ Got timely possession. Better than other builders of Delhi NCR.

- SANTOSH KUMARI
Delhi

Strategic Location, Countless Conveniences

- ★ Situated on 150m wide road Connecting Delhi Meerut Expressway to Greater Noida
- ★ Near FNG Corridor
- ★ Adjacent to Yatharth Hospital and Lotus Valley International school
- ★ Five minutes from major shopping malls
- ★ Five minutes from Delhi Meerut Expressway



EXPRESS BUILDERS

SITE OFFICE: Plot No. GH-06A, Sector- 1, Greater Noida (West)

HEAD OFFICE: H-139, Sector 63, Noida, Uttar Pradesh- 201301

W | www.expressbuildersltd.com

UP RERA Regn. Number UPRERAPRJ479698 | **Website of UP RERA -** www.up-rera.in