

CODENAME ONLY THE BEST

 **LODHA**

PLANS



SOUTH PUNE'S FINEST LANDMARK

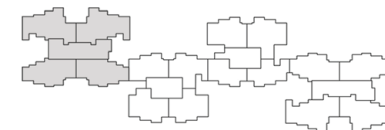
A truly premium living experience with world-class amenities, tallest towers in NIBM with unobstructed views, thoughtfully designed homes with large sun decks, high quality property management and the badge value of living in one of the finest developments in South Pune.

TOWER 1

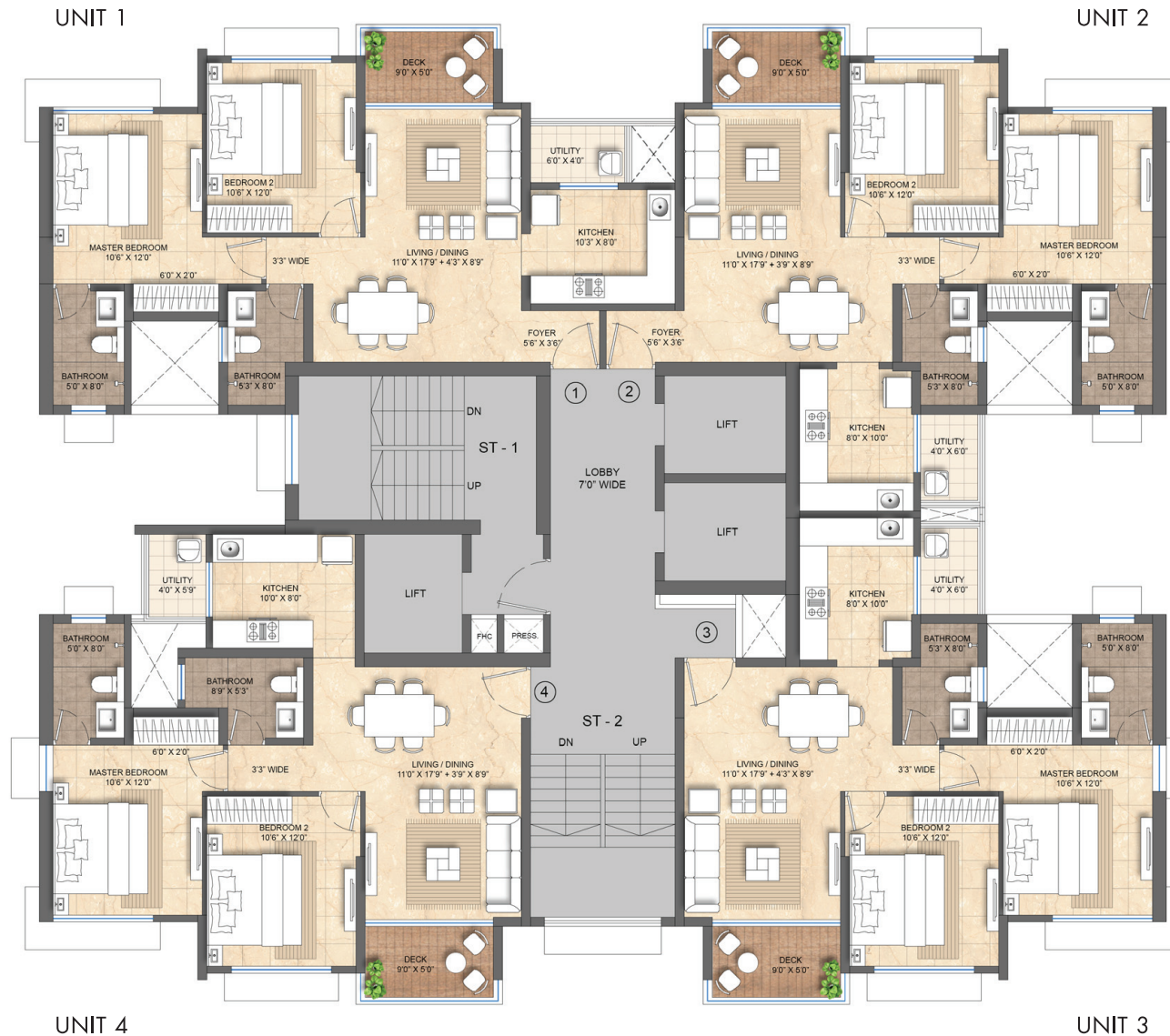


UNIT 1	3 BED WITH STUDY
UNIT 2	3 BED WITH STUDY
UNIT 3	3 BED
UNIT 4	3 BED

TYPICAL FLOOR PLAN

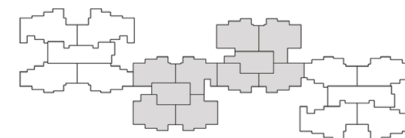


TOWER 2 & 3



UNIT 1	2 BED
UNIT 2	2 BED
UNIT 3	2 BED
UNIT 4	2 BED

TYPICAL FLOOR PLAN

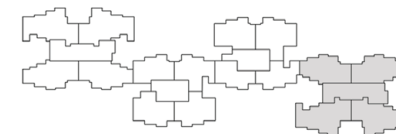


TOWER 4



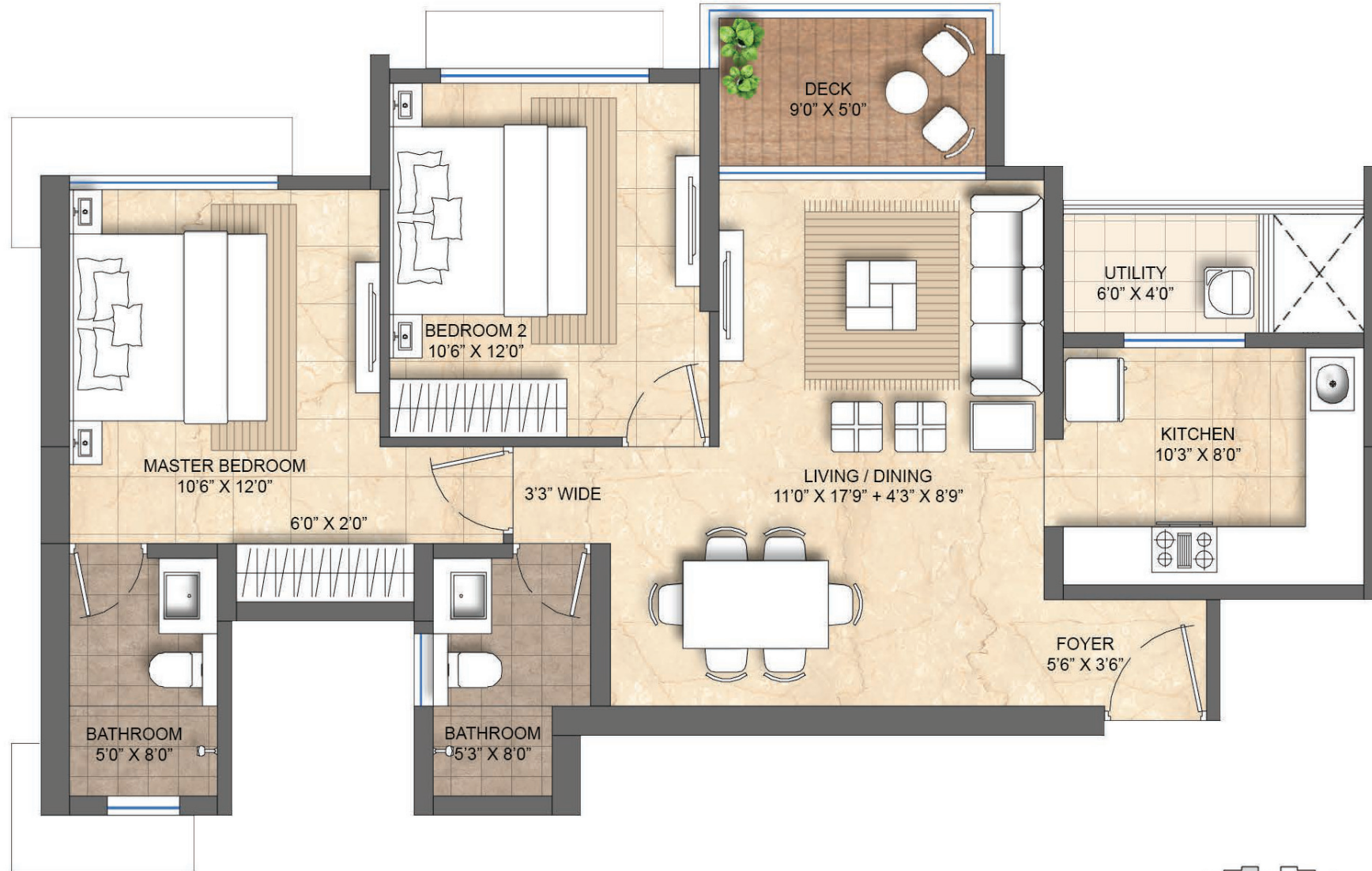
UNIT 1	3 BED
UNIT 2	3 BED
UNIT 3	3 BED WITH STUDY
UNIT 4	3 BED WITH STUDY

TYPICAL FLOOR PLAN

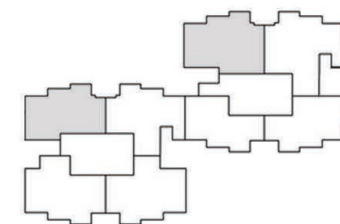


2 BED (UNIT - 1)

Area: 811 sq.ft



TOWER 2 & 3

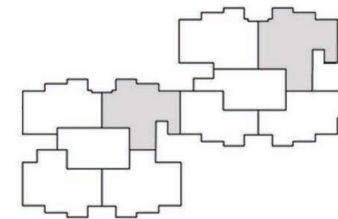


2 BED (UNIT - 2)

Area: 809 sq.ft



TOWER 2 & 3

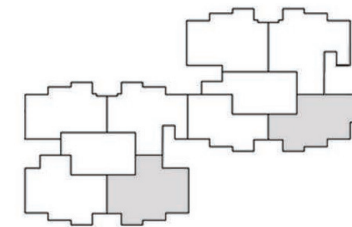


2 BED (UNIT - 3)

Area: 789 sq.ft

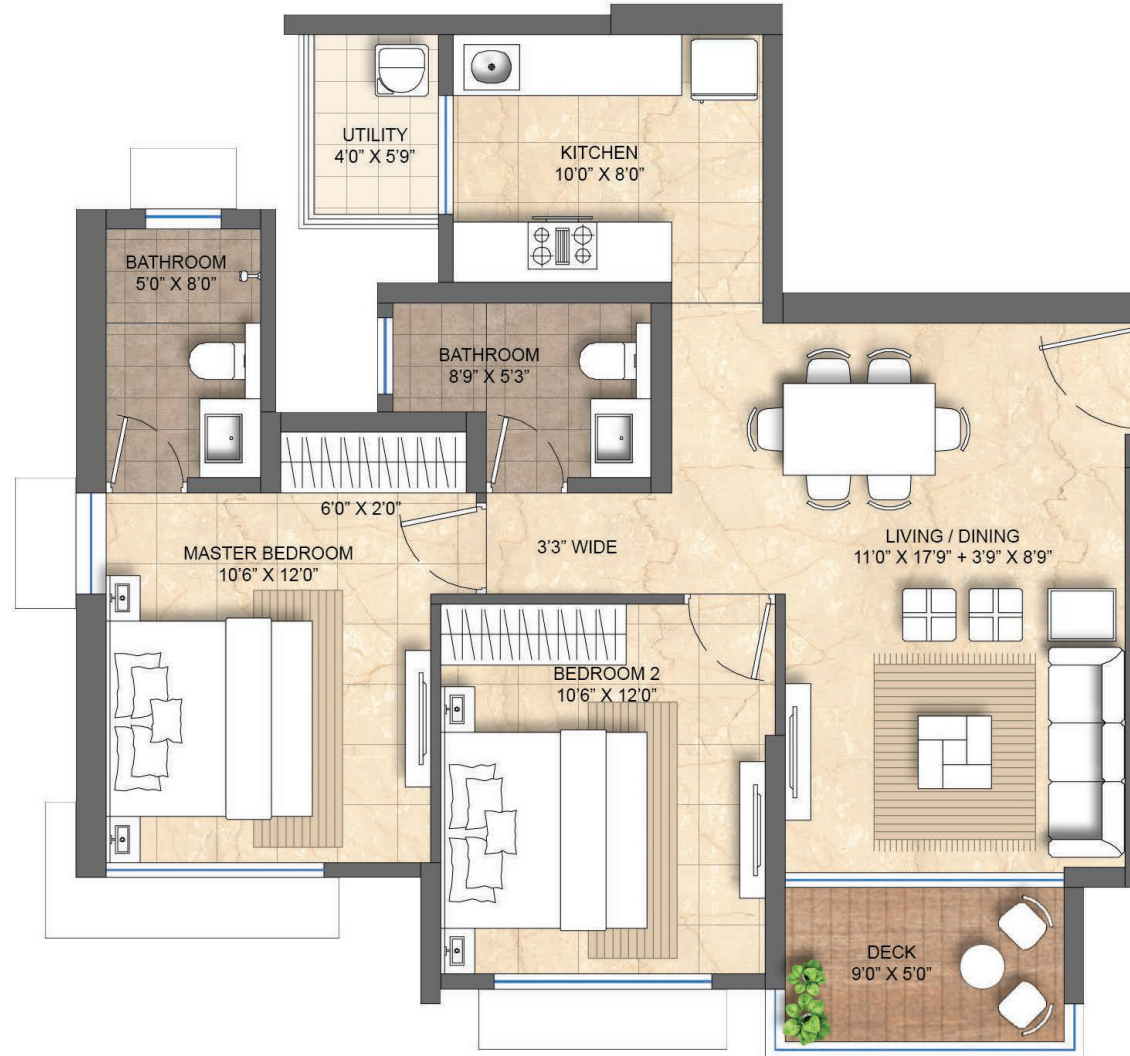


TOWER 2 & 3

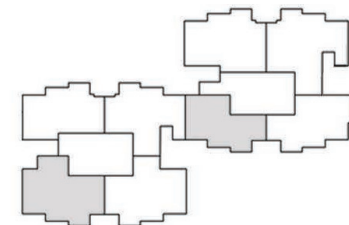


2 BED (UNIT - 4)

Area: 793 sq.ft



TOWER 2 & 3

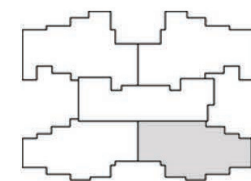


3 BED

Area: 1047 sq.ft



TOWER 1 - UNIT 3

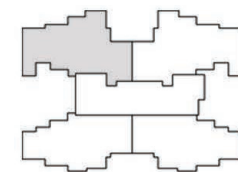


3 BED WITH STUDY

Area: 1181 sq.ft



TOWER 1 - UNIT 1





Partnering
GOEL GANGA DEVELOPMENTS

Site Address: Codename Only The Best, Off NIBM Road, Pune, Maharashtra, 411 028.

Corporate Office: Lodha Excelus, N M Joshi Marg, Mahalaxmi, Mumbai- 400 011.

MahaRERA Registration No. P52100024215 and is available on the website <https://maharera.mahaonline.gov.in> under registered projects.