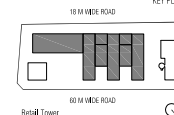
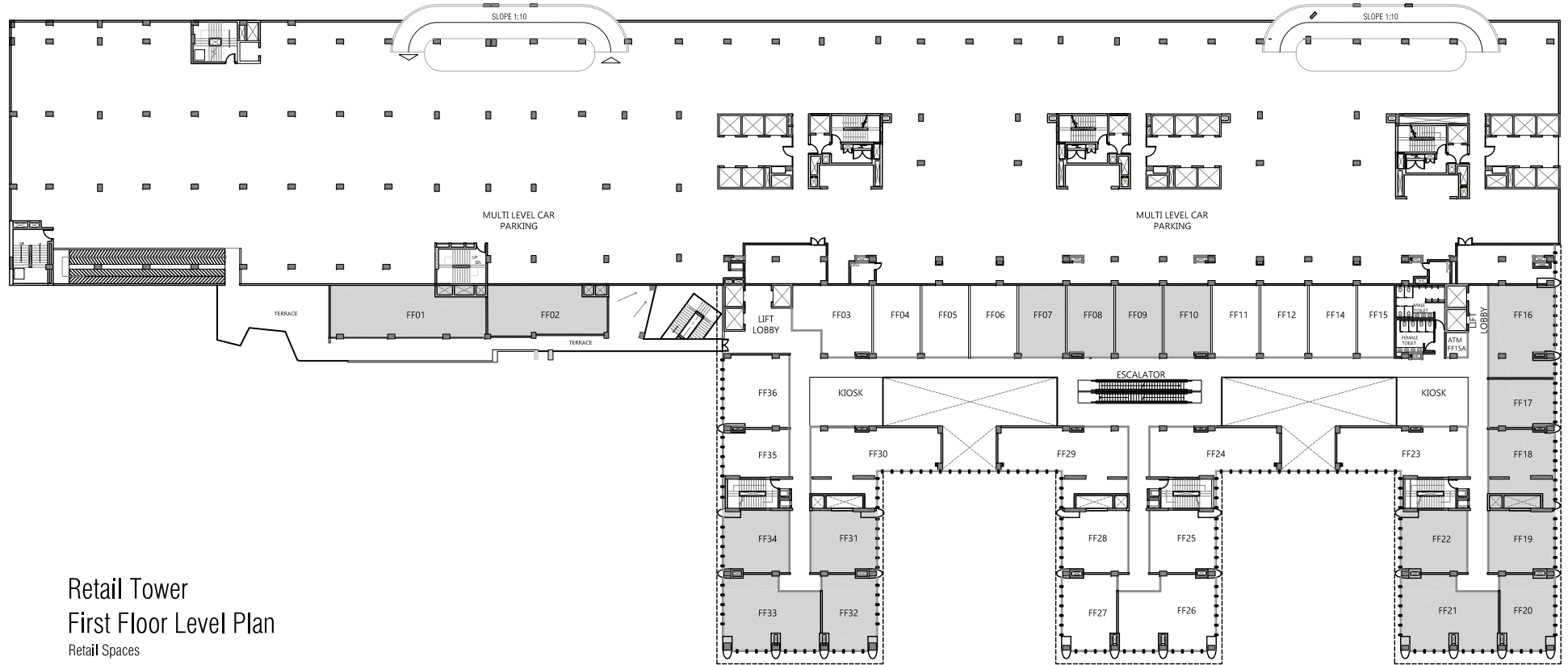


Retail Tower  
Ground Floor Level Plan  
Retail Spaces

DISCLAIMER- All the Images and Information provided herein is Indicative in nature, and are used for representative purpose only. Areas and sizes mentioned are tentative and illustrative only and not intended to be exhaustive. In our endeavour to improve the project, the project manager, architects and/or consultants reserve the right to change or alter any of the specifications, plans and areas mentioned herein. Layout of the project, building and unit may change at any time at the developer's discretion or as per regulatory requirements. World Trade Center, WTC and Map Design Logo are the registered trademarks of the World Trade Centers Association, Inc., New York (WTC), and WTC Noida Development Company Pvt. Ltd. - a group company of Viridian, having its office at GF-09 Plaza M6 District Centre, Jasola, New Delhi- 110025, has entered into a licence agreement with World Trade Centers Association, Inc., to use the name of 'World Trade Center', 'WTC' and Map Design Logo of World Trade Center for the Chandigarh project as "World Trade Center Chandigarh" and "WTC Chandigarh". The brand names and logos used herein are registered trademarks of their respective companies. Any unauthorized use thereof in any manner is prohibited. Please refer to the booking application and agreement issued by the company for detailed terms and conditions.

1 sq.ft. = 0.093 sq.m.





Retail Tower  
First Floor Level Plan  
Retail Spaces

DISCLAIMER- All the images and information provided herein is indicative in nature, and are used for representative purpose only. Areas and sizes mentioned are tentative and illustrative only and not intended to be exhaustive. In our endeavour to improve the project, the project manager, architects and/or consultants reserve the right to change or alter any of the specifications, plans and areas mentioned herein. Layout of the project, building and unit may change at any time at the developer's discretion or as per regulatory requirements. World Trade Center, WTC and Map Design Logo are the registered trademarks of the World Trade Centers Association, Inc., New York (WTCA), and WTC Noida Development Company Pvt. Ltd.- a group company of Vitiolan, having its office at Gf-09 Plaza M6 District Centre, Jasola, New Delhi- 110025, has entered into a license agreement with World Trade Centers Association, Inc., to use the name of 'World Trade Center', 'WTC' and Map Design Logo of World Trade Center for the Chandigarh project as 'World Trade Center Chandigarh' and 'WTC Chandigarh'. The brand names and logos used herein are registered trademarks of their respective companies. Any unauthorized use thereof in any manner is prohibited. Please refer to the booking application and agreement issued by the company for detailed terms and conditions.

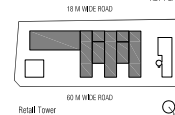
1 sq.ft. = 0.093 sq.m.

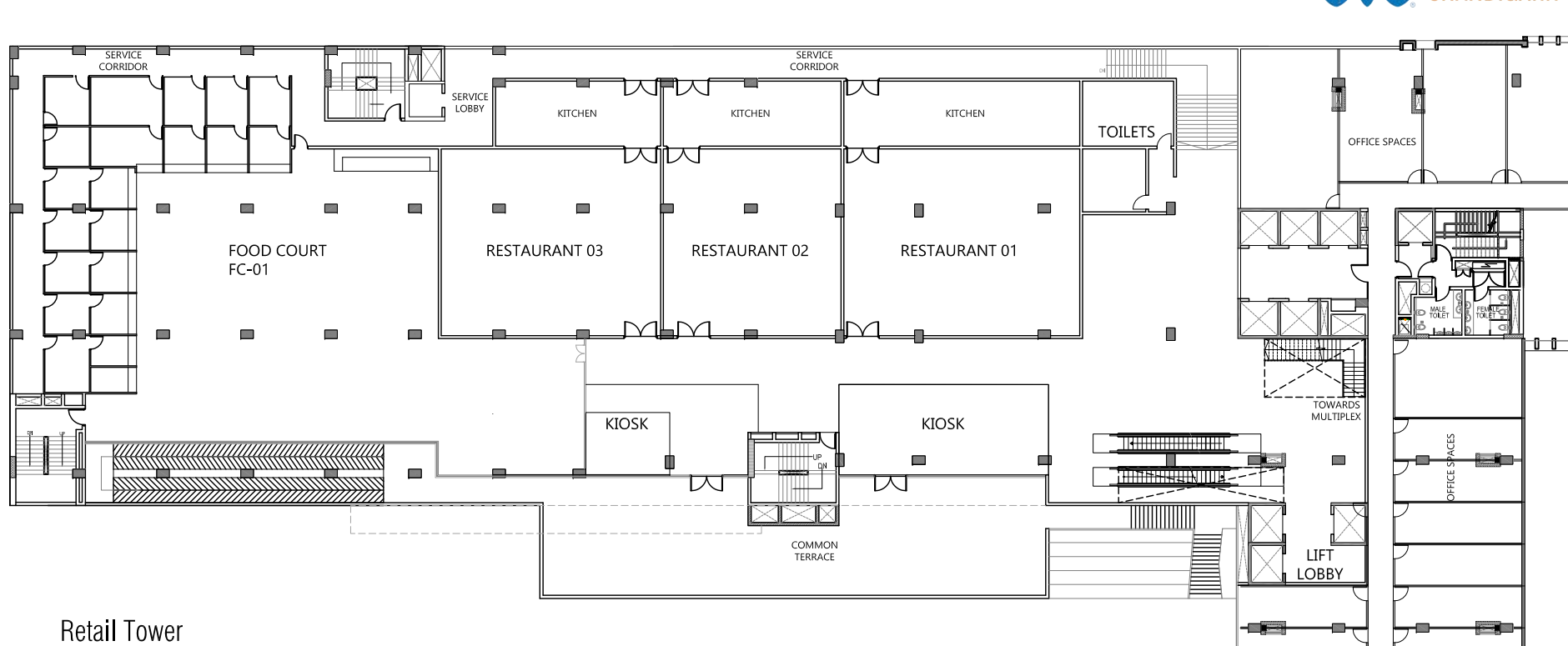


Retail Tower  
Second Floor Level Plan  
Retail Spaces

DISCLAIMER- All the Images and Information provided herein is Indicative in nature, and are used for representative purpose only. Areas and sizes mentioned are tentative and illustrative only and not intended to be exhaustive. In our endeavour to improve the project, the project manager, architects and/or consultants reserve the right to change or alter any of the specifications, plans and areas mentioned herein. Layout of the project, building and unit may change at any time at the developer's discretion or as per regulatory requirements. World Trade Center, WTC and Map Design Logo are the registered trademarks of the World Trade Centers Association, Inc., New York (WTCA), and WTC Noida Development Company Pvt. Ltd. - a group company of Viridian, having its office at GF-09 Plaza M6 District Centre, Jasola, New Delhi-110025, has entered into a licence agreement with World Trade Centers Association, Inc., to use the name of "World Trade Center", "WTC" and Map Design Logo of World Trade Center for the Chandigarh project as "World Trade Center Chandigarh" and "WTC Chandigarh". The brand names and logos used herein are registered trademarks of their respective companies. Any unauthorized use thereof in any manner is prohibited. Please refer to the booking application and agreement issued by the company for detailed terms and conditions.

1 sq.ft. = 0.093 sq.m.





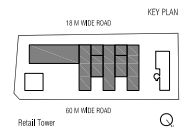
## Retail Tower

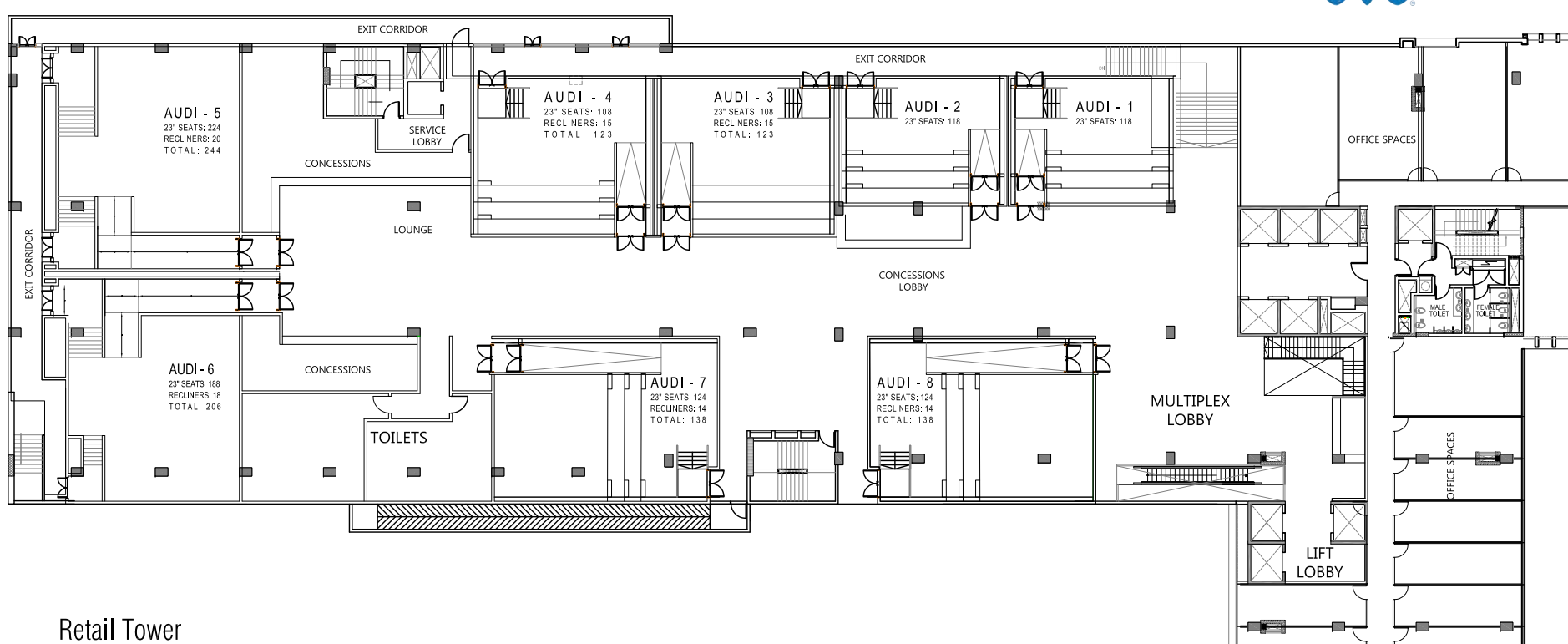
### Third Floor Level Plan

Retail Spaces

DISCLAIMER- All the images and information provided herein is indicative in nature, and are used for representative purpose only. Areas and sizes mentioned are tentative and illustrative only and not intended to be exhaustive. In our endeavour to improve the project, the project manager, architects and/or consultants reserve the right to change or alter any of the specifications, plans and areas mentioned herein. Layout of the project, building and unit may change at any time at the developer's discretion or as per regulatory requirements. World Trade Center, WTC and Map Design Logo are the registered trademarks of the World Trade Centers Association, Inc., New York (WTCA), and WTC Noida Development Company Pvt. Ltd. - a group company of Viridian, having its office at GF-09 Plaza M6 District Centre, Jasola, New Delhi- 110025, has entered into a licence agreement with World Trade Centers Association, Inc., to use the name of "World Trade Center", "WTC" and Map Design Logo of World Trade Center for the Chandigarh project as "World Trade Center Chandigarh" and "WTC Chandigarh". The brand names and logos used herein are registered trademarks of their respective companies. Any unauthorized use thereof in any manner is prohibited. Please refer to the booking application and agreement issued by the company for detailed terms and conditions.

1 sq.ft. = 0.093 sq.m.





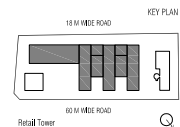
## Retail Tower

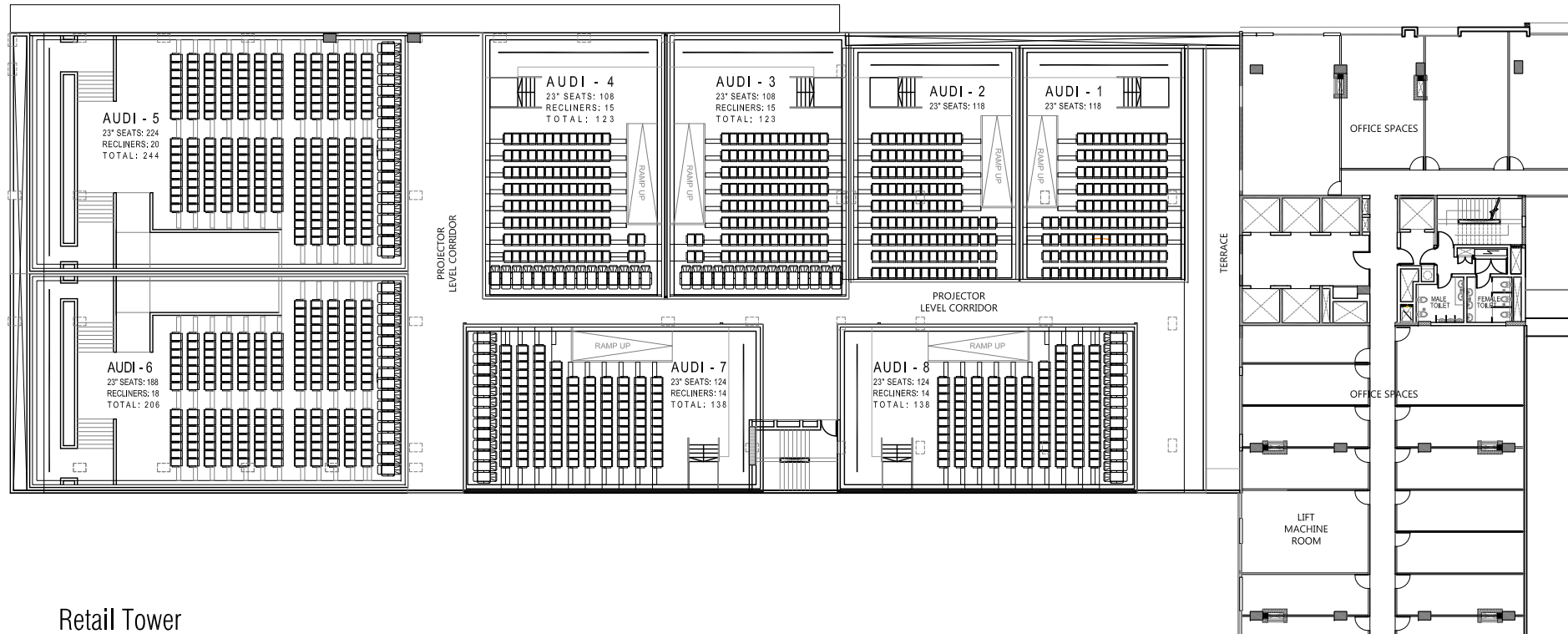
### Fourth Floor Level Plan

Retail Spaces

DISCLAIMER- All the images and information provided herein is indicative in nature, and are used for representative purpose only. Areas and sizes mentioned are tentative and illustrative only and not intended to be exhaustive. In our endeavour to improve the project, the project manager, architects and/or consultants reserve the right to change or alter any of the specifications, plans and areas mentioned herein. Layout of the project, building and unit may change at any time at the developer's discretion or as per regulatory requirements. World Trade Center, WTC and Map Design Logo are the registered trademarks of the World Trade Centers Association, Inc., New York (WTC), and WTC Noida Development Company Pvt. Ltd. - a group company of Viridian, having it's office at GF-09 Plaza M6 District Centre, Jasola, New Delhi-110025, has entered into a licence agreement with World Trade Centers Association, Inc., to use the name of 'World Trade Center', 'WTC' and Map Design Logo of World Trade Center for the Chandigarh project as "World Trade Center Chandigarh" and "WTC Chandigarh". The brand names and logos used herein are registered trademarks of their respective companies. Any unauthorized use thereof in any manner is prohibited. Please refer to the booking application and agreement issued by the company for detailed terms and conditions.

1 sq.ft. = 0.093 sq.m.





## Retail Tower

### Fifth Floor Level Plan

Retail Spaces

DISCLAIMER- All the images and information provided herein is indicative in nature, and are used for representative purpose only. Areas and sizes mentioned are tentative and illustrative only and not intended to be exhaustive. In our endeavour to improve the project, the project manager, architects and/or consultants reserve the right to change or alter any of the specifications, plans and areas mentioned herein. Layout of the project, building and unit may change at any time at the developer's discretion or as per regulatory requirements. World Trade Center, WTC and Map Design Logo are the registered trademarks of the World Trade Centers Association, Inc., New York (WTCA), and WTC Noida Development Company Pvt. Ltd., a group company of Viridian, having it's office at GF-09 Plaza M6 District Centre, Jasola, New Delhi-110025, has entered into a license agreement with World Trade Centers Association, Inc., to use the name of "World Trade Center", "WTC" and Map Design Logo of World Trade Center for the Chandigarh project as "World Trade Center Chandigarh" and "WTC Chandigarh". The brand names and logos used herein are registered trademarks of their respective companies. Any unauthorized use thereof in any manner is prohibited. Please refer to the booking application and agreement issued by the company for detailed terms and conditions.

1 sq.ft. = 0.093 sq.m.

