



Stone Gold
Industrial Park

A TYPE PLOT	
PLOT NO.	PLOT AREA SQ.
1	201
2	270
3	220
4	435
5	484
6	484
7	200
8	200
9	200
10	200
11	200
12	200
13	200
14	200
15	200
16	200
17	200
18	200
19	200
20	200
21	200
22	200
23	200
24	200
25	200
26	200
27	200
28	200
29	200
30	200
31	200
32	200
33	200
34	200
35	200
36	200
37	200
38	200
39	200
40	200
41	200
42	200
43	200
44	200
45	200
46	200
47	200
48	200
49	200
50	200
51	200
52	200
53	200
54	200
55	200
56	200
57	200
58	200
59	200
60	200
61	200
62	200
63	200
64	200
65	200
66	200
67	200
68	200
69	200
70	200
71	200
72	200
73	200
74	200
75	200
76	200
77	200
78	200

B TYPE PLOT	
PLOT NO.	PLOT AREA SQ.
1	287
2	224
3	270
4	284
5	233
6	233
7	241
8	242
9	249
10	239
11	244
12	229
13	229
14	234
15	234
16	234
17	234
18	234
19	234
20	234
21	234

C TYPE PLOT	
PLOT NO.	PLOT AREA SQ.
1	288
2	270
3	222
4	222
5	222
6	227
7	224
8	224
9	220
10	214
11	209
12	203



Layout Plan



Common Amenities



Security



Grand Main Gate



Street Light



Drainage



RCC Road



CCTV Surveillance



Garden

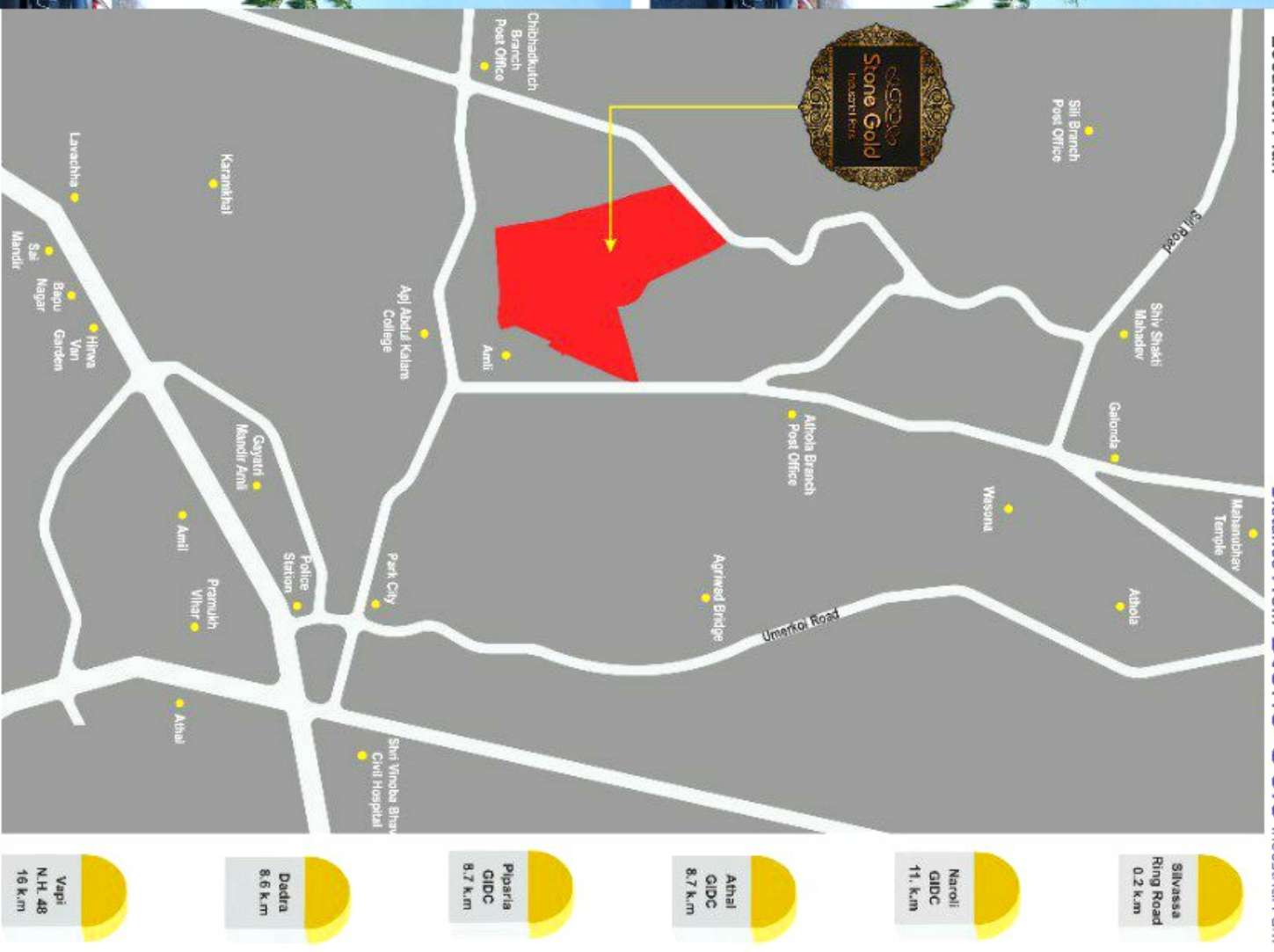


WE WILL IDENTIFY YOUR NEEDS
AND ENHANCE YOUR BUSINESS GROWTH.



Location Plan

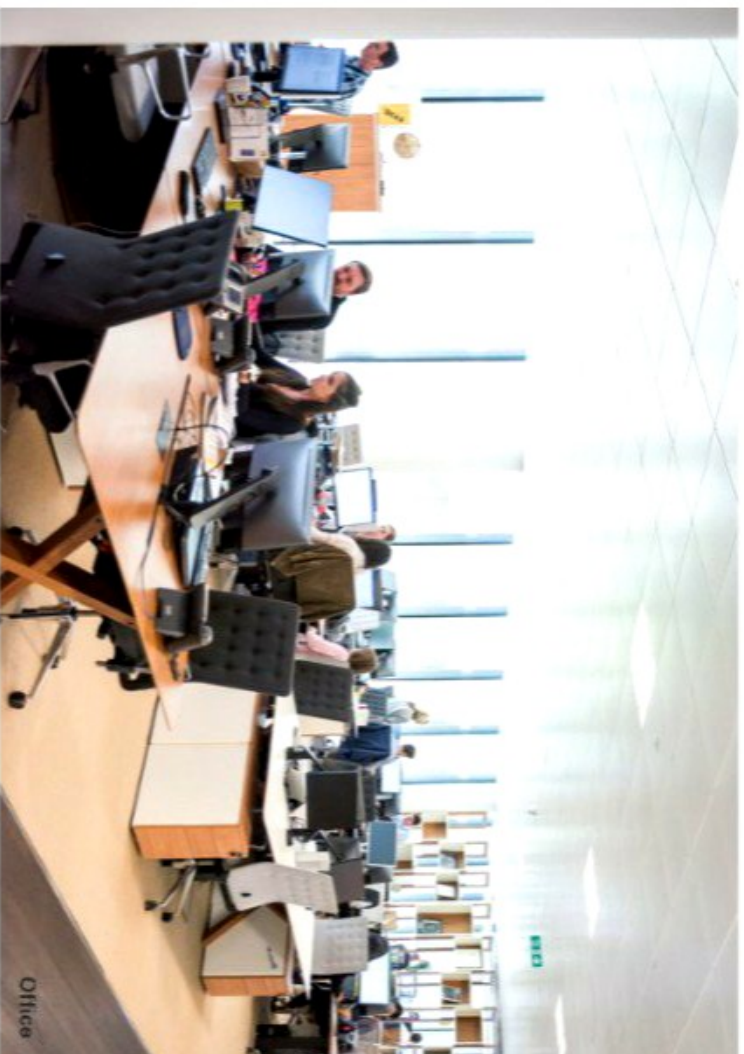
Distance From Stone Gold Industrial Park





SUITABLE LOCATION FOR

Labor Quarters - Godown - Packaging - Engineering - Electrical -
Fabrication - Automobile - Office - Shop - Workshop



Electric Industries



Factory



Fabric Industries



Packaging



Godown



Pharma Industries

Workshop



Paper Industries





Fabric Industries



Workshop

Paper Industries



Packaging Industries

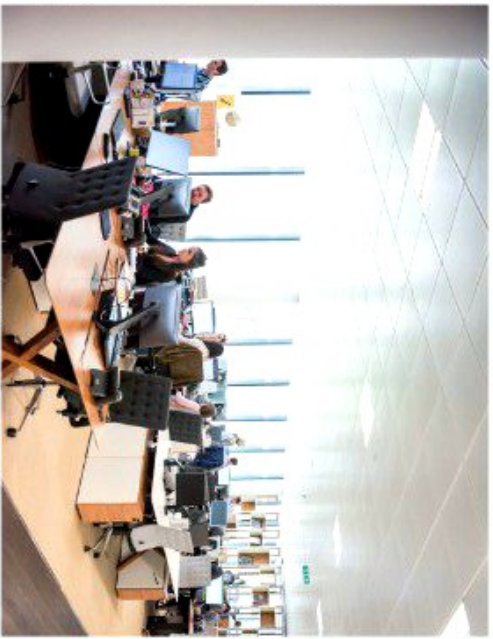
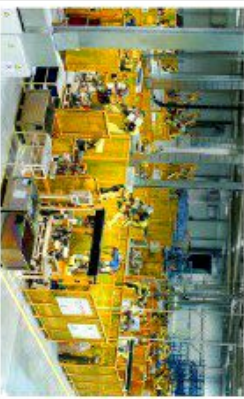
Labour Colony

Godown



Electric Industries

Pharma Industries



Office

Common Amenities



Sheet Light



Grand Main Gate



Security



CCTV Surveillance



Feeding

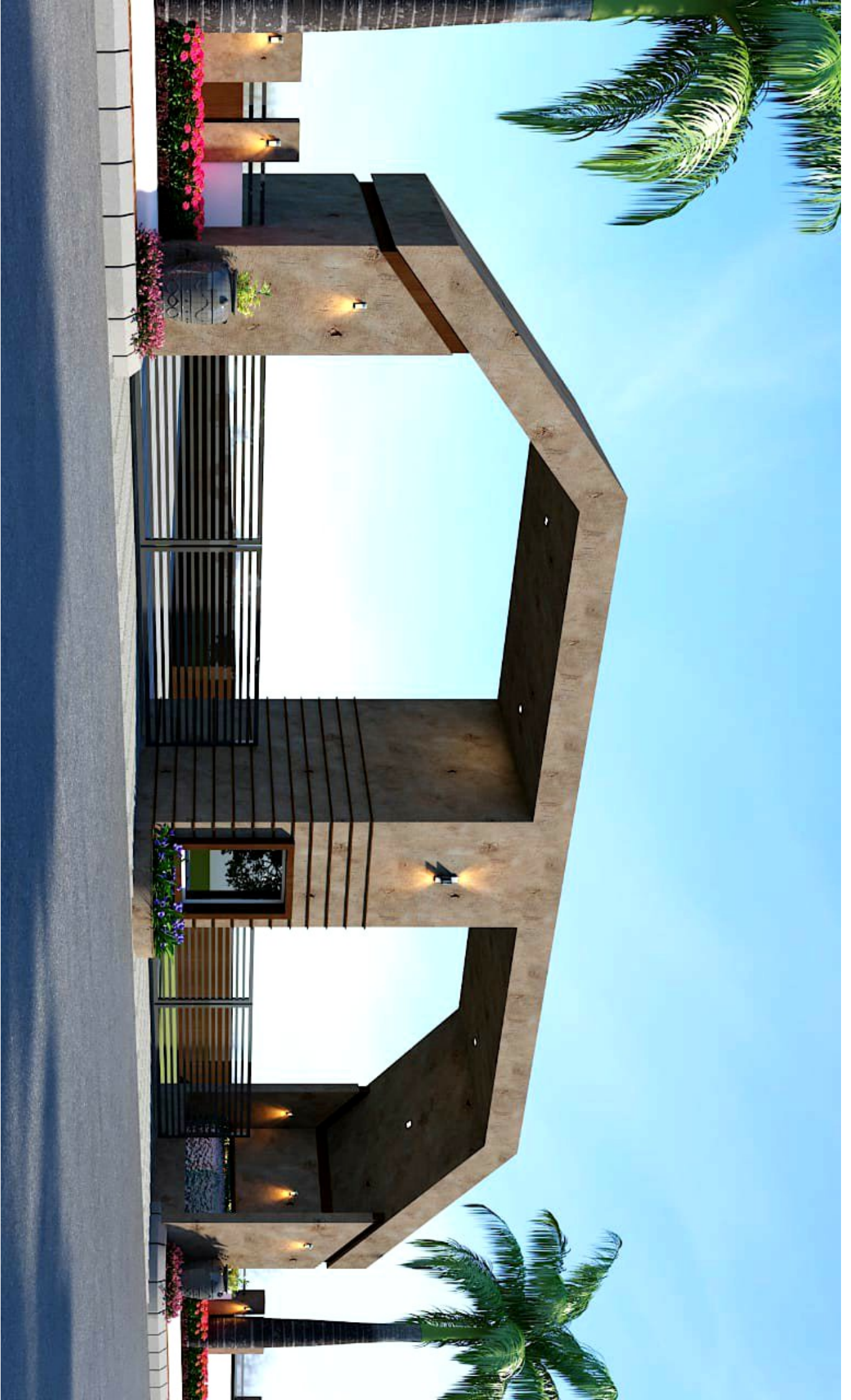


RCC Board



Greener





SUITABLE LOCATION FOR

Labor Quarters - Godown - Packaging - Engineering - Electrical -
Fabrication - Automobile - Office - Shop - Workshop



Electric Industries



Factory



Fabric Industries



Packaging



Godown



Pharma Industries

Workshop



Paper Industries





Stone Gold
Industrial Park

Developers : Sun Enterprise

Email : stonegoldindustrialpark@gmail.com

Booking Contact :

Manish Patel : +91 90990 98123

Ashish Patel : +91 9016777374

Legal Advisor :

Mukesh M. Thumar : +91 98251 45085

Site Address :

Stone Gold Industrial Park, Chibhdkach (Gujarat), Near Kadakia Plastic, Plot No-6-C Dokmardi,
Village Amla, Silvassa, Dadra And Nagar Haveli - 39230

NOTE : (1) Sale deed, Stamp duty, Registration charges, Legal charges, MSEB, GST, Society maintenance & all others charges shall be born by the purchaser. (2) Any additional charges or duties levied by the Government / Local authorities during or after completion of the scheme like betterment charge (deposit) will be born by the purchaser. (3) In the interest of continual development in design & quality of construction, the developer reserve all rights to make any changes, in the scheme including technical specifications, design, planning, layout & all purchasers shall abide by such changes. (4) This brochure is intended only for easy display & information of the scheme & does not form part of the legal documents. (5) Any new taxes announced by the government / Nagarpalika / Authority will be born by the buyer during the project.