

Commercial Complex | Strategic location | National Highway 8

Waterways & Rail network between Tripura & Bangladesh

A new waterway connect is expected to come up before the end of the year 2020, for movement of container ships between Sonamura (44.3 KM from Suryamani Nagar) and Ashuganj river port in eastern Bangladesh.

- The Ministry of shipping has included this in the Action Plan for north East Vision 2020.
- A proposal for a railway link between Akhaura in Bangladesh and Agartala passes nearby Agartala Land Customs Station has been made.
- The proposed railway link between Agartala to Sabroom (Southernmost tip of Tripura) shall have a railway station at Bishramganj (point of National Highway 8) which is 28 – 30 kms from Srimantapur Land Customs Station.
- This translates into reality the vision to make Tripura as a gateway to other North.



CCP Realto – The Business Advantage

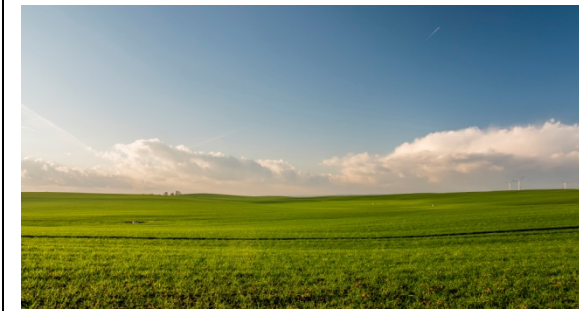
Situated in West Tripura District about 9 km from Agartala town and 20 km from Agartala Airport, it is one of the 60 assembly constituencies of the picturesque state of Tripura.

Cross Country projects – Realto, is a High – end, storey commercial complex located opposite the prestigious Tripura Central University on National Highway 8, (in Suryamani Nagar), the only connecting road to the South sub division of Tripura.

Approved by leading Nationalised Bank (SBI, UBI & HDFC Ltd.).

Proposed area is approx 15,000 sq. ft with 5 floors, each of 3,000 sq. ft approx. all of which can be customized as per needs.

Ideal for Banks, Multinationals, IT Firms, Retail establishments, Restaurants, Offices and much more. The entire development of Tripura is happening towards the south of the state, with the proposed highway to be converted to a 4 lane one.



TRIPURA

The state is well connected with Guwahati – Assam, Silchar & Shilong by road (both AC and Non-AC buses). A daily bus service from Agartala to Kolkata is also available for which a transit visa is needed through Bangladesh. Agartala is also directly connected with Guwahati, Kolkata, other North-Eastern cities and other metros via Guwahati or Kolkata by air route.

Agartala is also connected with Lumding and Guwahati by railway. Tripura has a 865 km long border with Bangladesh (surrounds the state on three sides) which constitutes 85% of its total border.

Inland Waterways Authority of India (IWAI) – jetty service

A new India – Bangladesh waterway has been proposed between Ashuganj river port, on Meghna river (37 km from Agartala) in eastern Bangladesh and Sonamura in Sipahijala Dist. Of Tripura through rivers Gomati and Meghna.

Distances from CCP – Realto:
The International fairground–3.5km
Science City – 2.5 km
Agartala Railway Station – 4 Km.

The commercial complex incorporates all facilities and amenities, including Central air – conditioning, sprinkler system, fire alarm system, public address system.

CCP Realto is part of the three high – end constructions of Cross Country Projects, which include two-Residential projects with aesthetically designed studio, 1/2/3 BHKs and Duplexes, designed to suit the varying needs of the market.

Suryamani Nagar

Bangladesh is one of the Asian region, with technology projects being similar to those in India.

Apart from Banking & financial services, Bangladesh's wide network of inland waterways connected through river ports offers ample scope for a plethora of services.

A 250 feet long bridge on the Feni river in Sabroom (75 km from Chittagong) sub-division of South Tripura dist. Will connect the Chittagong international sea port in Bangladesh.

With the twin advantage of International Internet Gateway (IIG) and uninterrupted power supply (state is now power surplus), Tripura is moving fast on the road towards a Digital State as part of Digital India. Cross Country Projects invites you to bring your business to Tripura and be a part of the Growth of the State, Country and your business.

Contact Details

+91.9431704308/ +91.8974422036
e-mail.: ccprojects.999@ gmail.com



CROSS COUNTRY PROJECTS



PROPOSED FLOOR PLAN
FOR QUICK SERVICE RESTAURANT



PROPOSED FLOOR PLAN
FOR BANK



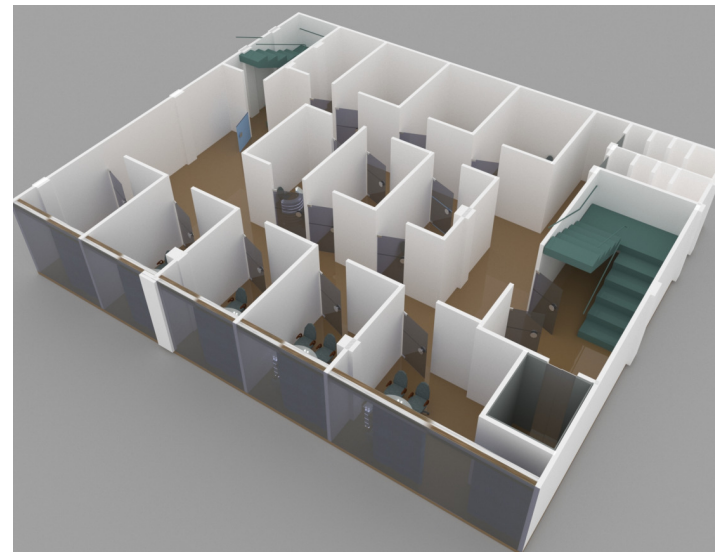
PROPOSED FLOOR PLAN
FOR CORPORATE OFFICE



PROPOSED FLOOR PLAN
FOR OUT PATIENT DOOR (OPD)



PROPOSED FLOOR PLAN
FOR SHOWROOM



PROPOSED FLOOR PLAN
FOR SHOP/ INDIVIDUAL OFFICES



PROPOSED FLOOR PLAN
FOR OPEN SKY RESTAURANT

SPECIAL AMENITIES

- 24 Hours Water & Electricity
- Generator Backup.
- 24 Hours Security.
- CCTV Surveillance.
- IRP.
- Modern Fire Fighting System
- Commercial Lift.
- Underground Parking.
- Road Side Parking.
- Centralized AC.