

SAHIL

Yashika

1 & 2 BHK Homes

A Project By
SAHIL DEVELOPERS
Committed to making a difference



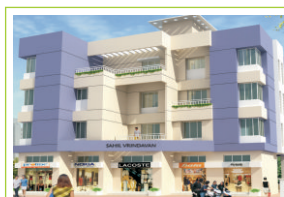
About us....

RELATIONSHIP - INTEGRITY - TRUST

M/s Sahil Developers starts its activity with a commitment of "Relationship.....Integrity.....Trust". We believe in delivering value to one-and-all, by creating products and services that enhance the appreciation of life. While real estate is our business, we consider ourselves a service industry... and our service is to design and deliver a 'better living'. We aim to create spaces that enable you to focus on the things you consider important – whether it is building a career or a business, growing a family, connecting with friends, or simply finding the time and space to pursue your dreams. Our vision is to create Homes, Commercial Spaces and Business Centers that uphold quality and withstand the test of time. Our commitment to quality and our reputation for reliability and integrity has won us the faith of our customers, Our mission is to create efficient Housing Complex leading to 'Better Living', as well as best value appreciation for our clients.



● SAHIL APARTMENT ●



● SAHIL VRINDAVAN ●



● SAHIL SANGAM ●



● SAHIL KOHINOOR ●



● SAHIL SPARSH ●



● SAHIL ANAND ●



● SAHIL PRIDE ●

SAHIL
Yashika
1 & 2 BHK Homes

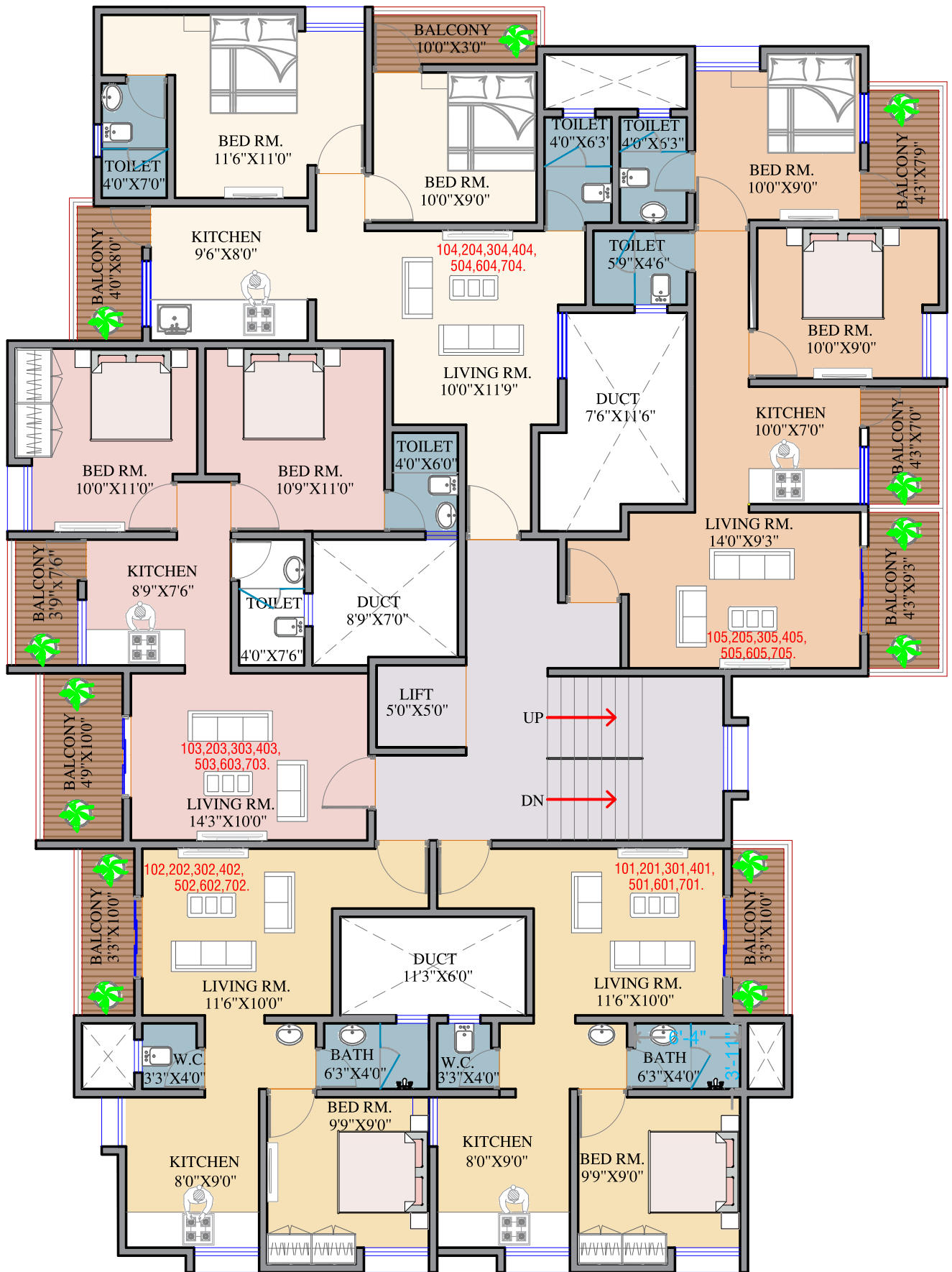




1 BHK Layout



2 BHK Layout



FLAT NO.	FLAT TYPE	CARPET AREA
101,201,301,401, 501,601,701.	1 BHK	411.00
102,202,302,402, 502,602,702.	1 BHK	411.00
103,203,303,403, 503,603,703.	2 BHK	584.00
104,204,304,404, 504,604,704.	2 BHK	612.00
105,205,305,405, 505,605,705.	2 BHK	603.00





STRUCTURE & MASONARY :

- * Earthquake resistant RCC Structure
- * 6" external walls & 4" internal walls.
- * Sand Faced plaster for external & POP finished internal walls.

ELECTRICAL FITTINGS :

- * Electrical concealed copper wiring with modular switch with adequate points in all rooms.
- * Ceiling Fan points in all rooms.
- * Provision of Electrical exhaust fan in kitchen.
- * Miniature circuits breaker (MCB).
- * T.V. & Telephone points in living room.
- * Provision for water purifier electrical point in kitchen.

LIFT :

- * One elevators with backup.

KITCHEN :

- * Granite kitchen platform with stainless steel sink.
- * Provision for water purifier.
- * Glazed tile dado upto lintel level above kitchen otta.

DOORS :

- * Attractive main entrance door with both sides laminate & fittings.
- * Toilet & bathroom door frame in marble / granite.
- * All Bedrooms, toilets and terraces doors will be water proof flush doors.

PAINTINGS :

- * Superior quality oil bond distemper for all internal walls.

- * External wall in waterproof cement paint
- * Oil painted M.S. safety grills.
- * Oil painted M.S. Railing for Terrace.
- *

WASHROOMS :

- * Designer Glazed tiles dado upto lintel height
- * Ceramic flooring in all toilets.
- * Concealed internal plumbing.
- * Provision for water Geyser.
- * Premium quality make bathroom C.P. fittings.
- * Premium quality bathroom sanitaryware fittings.

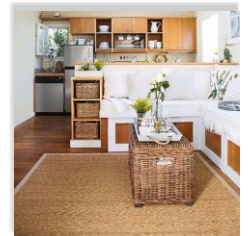
FLOORING :

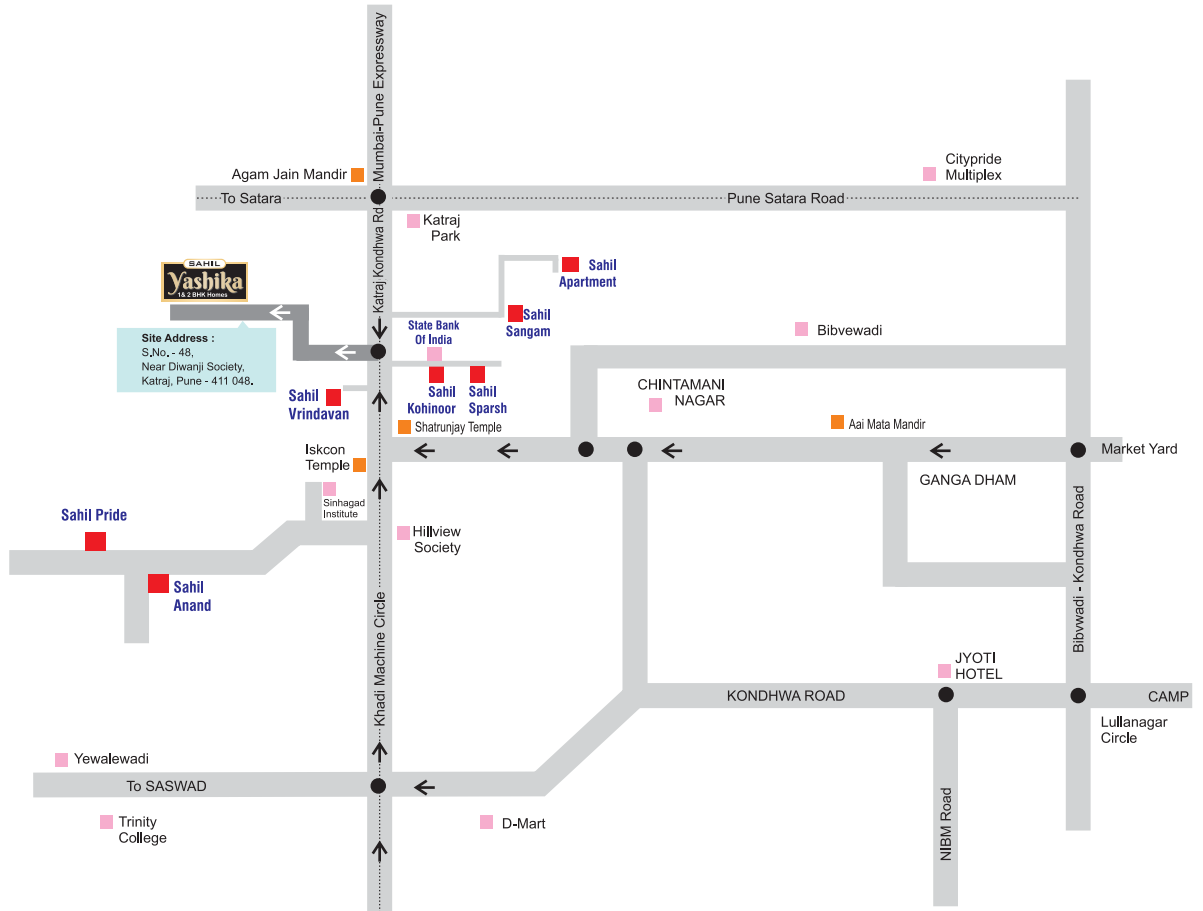
- * 600 mm x 600 mm vitrified flooring in all rooms
- * Anti skid flooring in the terraces, dry balcony & washrooms.

WINDOWS :

- * 3 Track Powder coated aluminium sliding windows.
- * Safety grills in all windows.
- * Granite / Marble window sills

- ◆ Attractive Main Entrance Gate
- ◆ Internal Concrete Drive Ways
- ◆ Power Back-up For All Common Areas & Lifts
- ◆ Rainwater Harvesting
- ◆ CCTV Camera at Main Entrance Gate.
- ◆ Letter Box For Each Flat
- ◆ Name Directory In The Lobby
- ◆ Project with well designed compound wall for protection & safety





TEMPLES	
New Iskcon Temple	02 Min
Balaji Mandir	02 Min
Shatrunjay Mandir	02 Min
Agam Mandir	10 Min

SCHOOL & COLLEGE	
Bishop's School	10 Min
Delhi Public School	15 Min
Sinhgad Institute	03 Min
VIT College of Eng	05 Min

ENTERTAINMENT & MALL	
Corinthians Club	15 Min
City Pride Multiplex	20 Min
Royal Heritage Mall	10 Min
D-Mart	8 Min

CONNECTIVITY	
Mumbai - Pune Bypass	10 Min
Pune - Solapur (NH 9)	20 Min
Pune - Satara Bypass	10 Min
Katraj - Kondhwa Road	01 Min

Rera Registration No.: Applied

C R E D I T S

Architect
Vikas Dhere

R.C.C. Consultant
Shishir Dhawade

Legal Advisor
Rajesh R. Khaladkar

Project Manager
Pentagon Enterprises

A project by



SAHIL DEVELOPERS
PROMOTERS, BUILDERS & CONTRACTORS

Committed to making a difference

✉ : sales.sahildevelopers@gmail.com
🌐 : www.sahildevelopers.com

M : 8237706060 / 8237406060

Note : The plans, specification, Amenities, Furniture, Number of flats, number of floor, area & photographs in the brochure are only indicative. The brochure is conceptual in nature & is by means a legal offering. The promoters have right to change, alter, remove or add any specification without prejudice.