

Lilium 
LUXURIOUS ROW VILLAS

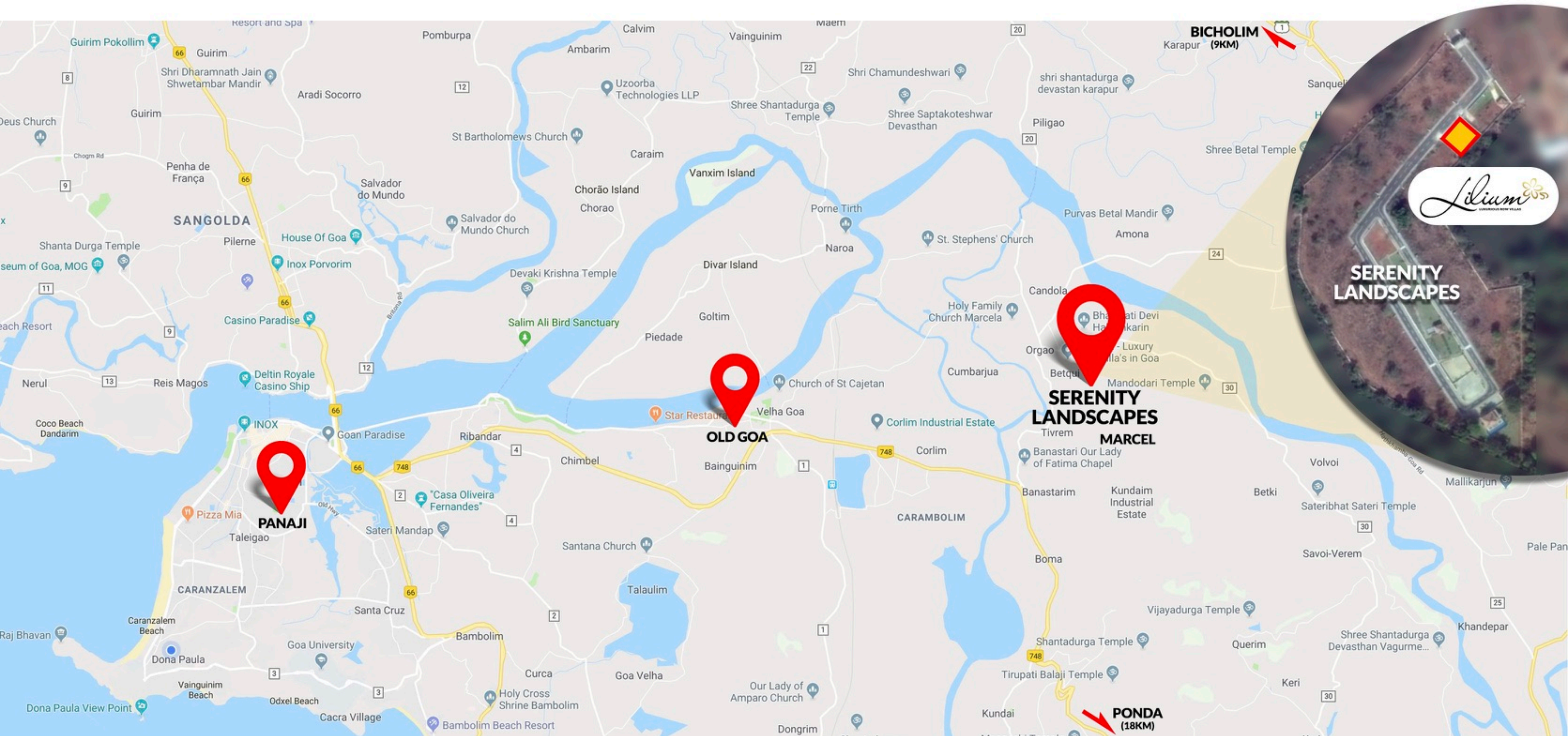
Serene abodes by *Goan Paradise*



ACTUAL SERENITY LANDSCAPES SITE PHOTO

Lilium 
LUXURIOUS ROW VILLAS

Goan Paradise brings you exclusive Four Luxury Row Villas located at **Serenity Landscapes**, a gated residential estate, at Marcel, Goa. Built on a plot of 457sq.m. in the lap of nature these spacious 4BHK villas offer the comfort and relaxation only a luxurious home can bring! Each 4BHK row villa comes with its own private terrace and a private garden.



Marcel is conveniently located between the cities of Panjim, Ponda and Bicholim at a distance of 21km, 18km and 9km respectively. UNESCO World Heritage Sites of Old Goa, the Spice Plantations and famous Temples of Goa are within a 10min drive from your Liliam Row Villa.

Liliam has excellent connectivity by road and rail. Dabolim Airport is 30km away. The supermarket, fish and vegetable market, bakeries and pharmacies are a mere 5min walk from your Liliam Row Villa. Private and Public schools, colleges and hospitals are in the neighbourhood.

Lilium



LUXURIOUS ROW VILLAS

Serenity Landscapes is a place for those yearning for tranquility in the lap of nature. As you enter this secure gated estate and drive down the Central Avenue to your home at Lilium get transported into a world of peace and oneness with nature.

Feel the gentle breeze as you take a stroll on the lush green lawns. Laze around and relax in the gazebos overlooking the fishponds. Spot the occasional peacocks and take up bird watching as your next hobby spotting the wide variety of birds that have made Serenity Landscapes their home.

For the fitness enthusiast, take a jog or cycle around on the well engineered and laid-out roads and footpaths of the estate. Kids can safely enjoy their childhood in the sand pit and create unforgettable adventures amidst the country landscape.

Come experience the serenity that surrounds Lilium Villas with the beauty of greenery engulfing your senses!

LILIUM SPECIFICATIONS

- ✓ 4 Bedroom-Hall-Kitchen
- ✓ Ground+2 Configuration
- ✓ Single car parking slot
- ✓ Entrance porch
- ✓ Picket-fenced garden space
- ✓ Large open terrace
- ✓ RCC framed structure
- ✓ High-strength brickwork
- ✓ Double-coat external plaster
- ✓ Apex or equivalent exterior paint
- ✓ Single-coat internal plaster
- ✓ Double-coat wallcare (Birla White)
- ✓ Oil-bound distemper for interiors
- ✓ Overhead water-tank for each villa
- ✓ Granite kitchen counter top
- ✓ Vitrified kitchen dado tiles
- ✓ Stainless steel kitchen sink
- ✓ Double-charged vitrified floor tiling
- ✓ Anti-skid tiling for terrace & balcony
- ✓ Cera/Jaguar/Kerovit sanitaryware
- ✓ Finolex plumbing pipework
- ✓ Finolex concealed electrical wiring
- ✓ Honeywell & Legrand switchgear
- ✓ Designer bathroom tilework
- ✓ Teakwood main door





Lilium 4BHK Row Villas are designed to be the luxurious setting for you to create, cherish and celebrate the greatest memories of your life combining elegance with functionality, superior design with quality construction and luxury with affordability.



FIRST FLOOR



SECOND FLOOR

Each Row Villa has two bedrooms on the first floor and a large master bedroom on the second floor with a spacious balcony. Second floor has a spacious Private Terrace to relax as you enjoy the greenery of the estate and entertain your loved ones and friends over a barbeque in your home at Liliun.

Liliun 
LUXURIOUS ROW VILLAS



AREA STATEMENT

LILIUM - VILLAS 1 & 4

Super built-up area: 170.13 sq.m.

Carpet area: 125 sq.m.

Garden area: 20-24 sq.m.

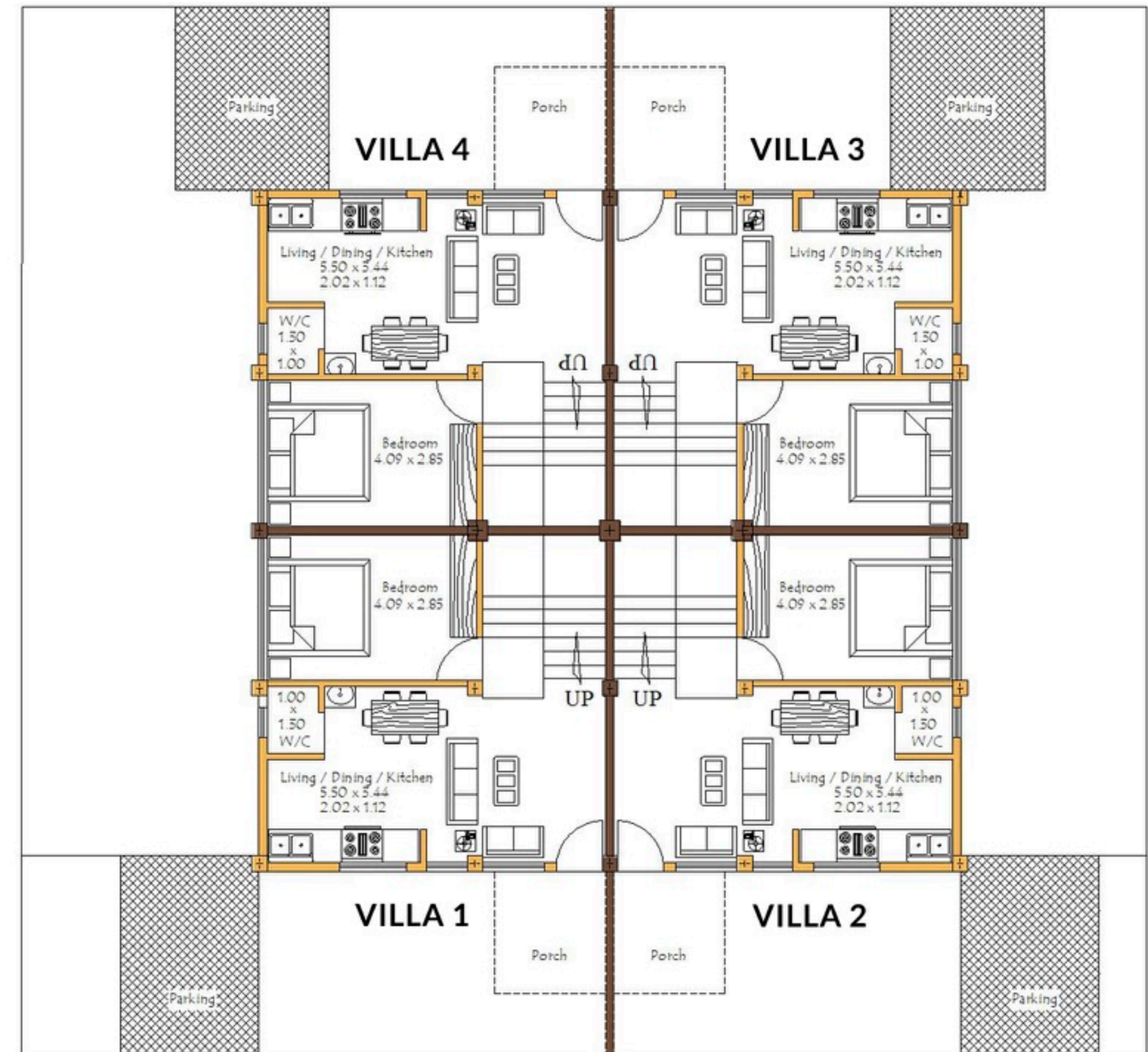
LILIUM - VILLAS 2 & 3

Super built-up area: 180.24 sq.m.

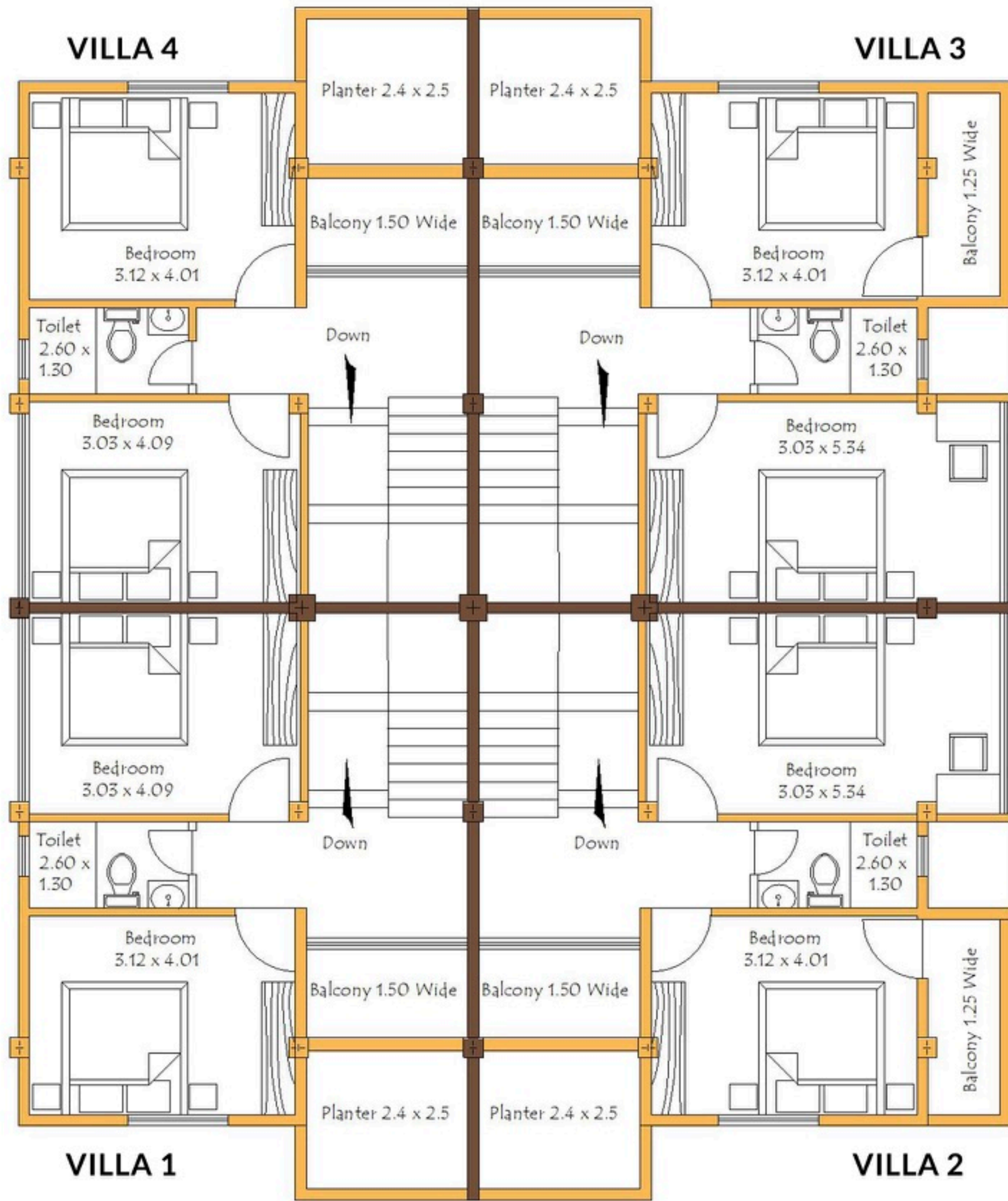
Carpet area: 127 sq.m.

Garden area: 20-24 sq.m.

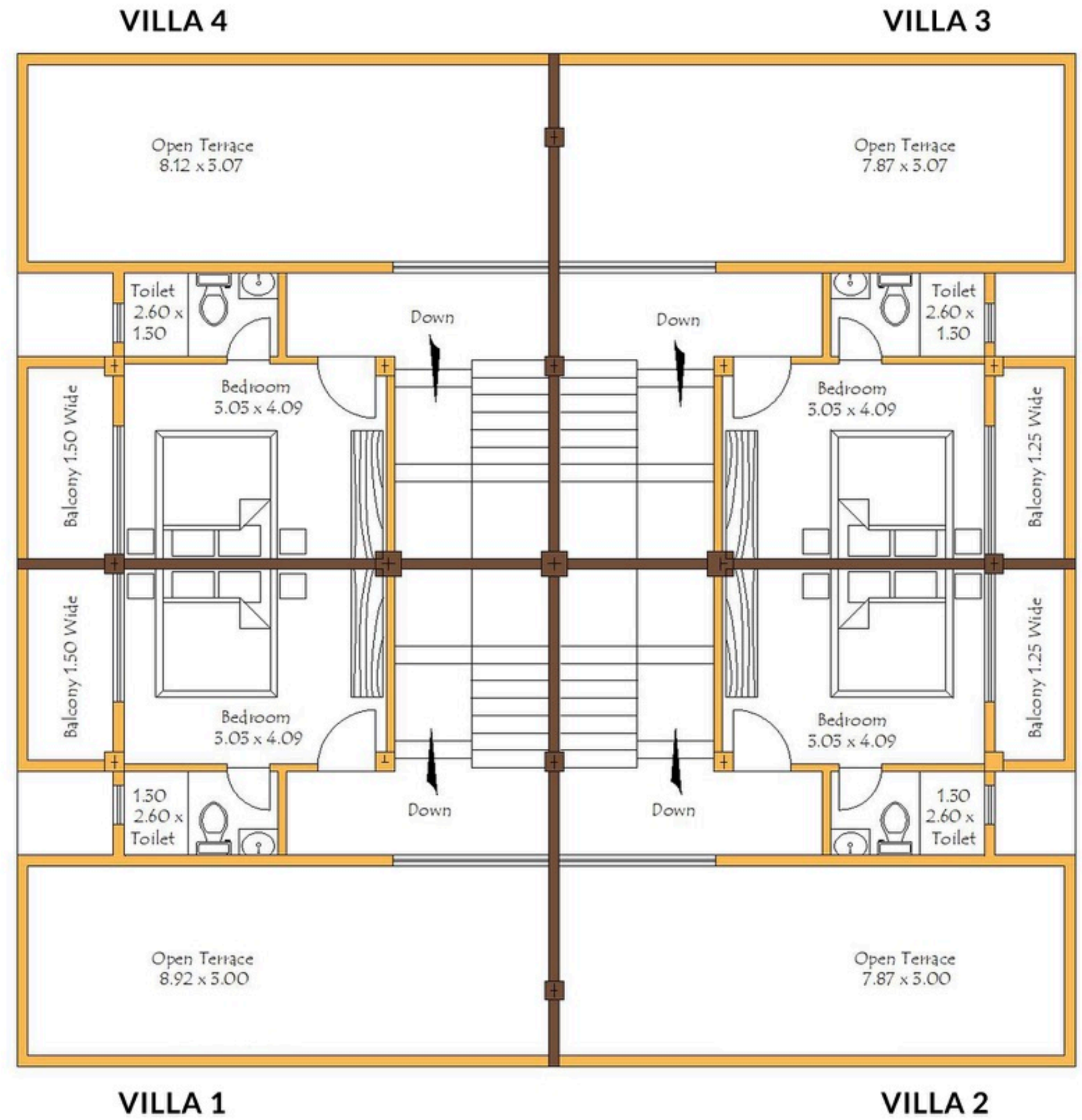
CENTRAL AVENUE (10m wide)



GROUND FLOOR PLAN - VILLAS 1, 2, 3 & 4



FIRST FLOOR PLAN - VILLAS 1, 2, 3 & 4



SECOND FLOOR PLAN - VILLAS 1, 2, 3 & 4



FLOOR #3, PATTO CENTRE BUILDING,
EDC COMPLEX, PATTO, PANAJI, GOA - 403001
info@goanparadise.com | liliu.goanparadise.com
+91 9922413356, +91 9822702333

DISCLAIMER: The material and visuals in this brochure are artist illustrations and impressions of the proposed project in the development. The areas, villas, floors, layouts, demarcations, plans, amenities, accesses, descriptions, dimensions, elevations, facilities, spaces, specifications, fittings, fixtures, furniture and various other features relating to the project, are all provisional, tentative and under finalization; not part of standard premises, and are subject to change and variations from time to time at the developer's/builder's sole discretion (without prior notice or obligation). This brochure is issued for general guidance only and does not constitute any assurances, claims, offers, inducements, invitations or representations for any purpose whatsoever.