

Project by:



DISCOVER A WORLD  
BEYOND LIMITATIONS...


**Corporate Address:**

Tulip Developers La Casita,  
Office No. 16-18, Sector No. 32A, Ravet, Pune 412101  
Contact : +91 7276 711 166 / 853 035 6111 / 7038 666 111

**Site Address:**

Behind Madhura Lawns, Near Ravet Basket Bridge  
Aundh-Ravet BRT Road, Punawale, Pune - 411033

sales@tulipproperties.in | www.tulipproperties.in  
Contact No. : 7083 666 111

 This project registered via  
MAHARERA NO. P52100021151 <https://maharera.mahaonline.gov.in/>

**Credits:**

<b>Architect</b> Landmark Design Group	<b>RCC Consultant</b> J.W. Consultants LLP
<b>Legal Advisor</b> Legal Realty	<b>Branding</b> Bright Brain

**Disclaimer:** The contents of this brochure are conceptual. Furniture, amenities and fixtures shown may not be part of actual offering. The developer reserves the rights to amend layouts, plans, number of floors specifications, colors scheme, amenities etc. without any notice.

A MEMBER OF  
**CREDAI**  
PUNE METRO



 **INFINITY  
WORLD**

2, 3 & 4 BHK @ PUNAWALE



A B O U T U S

## A masterpiece of cosmic proportions...

Infinity World offers an array of 2, 3 and 4 BHK homes that are crafted to give you a feeling of being boundless. Experience the joy of living with endless reasons to celebrate life like precious relationships, countless moments and much more. The thoughtful designs, specifications and amenities make the homes limitless in size, space and extent. Welcome to the gateway to infinite!







## Homes offering infinite avenues...

Life gives us infinite opportunities to experience happiness and one such opportunity is a home at Infinity World. Every corner is designed to host the infinite moments that you will be living every day with your loved ones. Embrace infinite joy, infinite comfort and infinite convenience at Infinity World.

E M B R A C E I N F I N I T Y



## Umpteen reasons to unwind...

A life with limitless joy and convenience is what makes it worth living. Homes are a beautiful part of your life. The finest version of you is shaped by the surroundings you live in and homes are the space where you spend most of your precious time with yourself and your loved ones. Every corner will reflect emotions, bonds and moments that make your life magnanimous, that you want to keep for a lifetime.

### STRUCTURE

- RCC framed earthquake resistance structure

### EXTERNAL FINISH

- Sand faced plaster
- Apex Paint-Asian / Equivalent

### INTERNAL FINISH

- Plastic Emulsion Paint-Asian / Equivalent

### HOME AUTOMATION

- Video door Phone-Hik-vision make / Equivalent
- Intercom facility
- 24 Hour Security through CCTV camera- Hik-vision make / Equivalent

### ELECTRIFICATION

- Concealed copper wiring with circuit breakers-Polycab make / Equivalent
- Electrical points along with switches
- TV and telephone points in living and telephone points in master bedroom
- Provision of AC points in living room and one bedroom for 2 BHK two bedroom in 3 BHK and three bedrooms in 4 BHK
- Provision for Inverter in each flat
- Genset power backup for lift, staircase, parking and pumping (Kirloskar)

### DOORS / WINDOWS

- Italiano composite marble door frame, with water proof laminated flush doors
- Powder coated aluminum sliding windows with mosquito net
- Aluminum adjustable louvers for bathroom
- Italiano composite marble window sill
- MS powder coated French doors with glass and grill for terraces.
- Aluminum sliding door for terraces



### ELEVATORS

- Three nos. Lifts with V3F drive-Otis / Equivalent

### FLOORING

- Vitrified double charge tile flooring
- Wooden finish tiles for terraces
- Antiskid tiles for dry terrace, bathrooms & toilets

### KITCHEN

- "L" Shaped / parallel granite kitchen platform
- Printed Glazed tile on wall till ceiling level
- Dry/Utility terrace with provision for washing machine in all flats
- Provision for exhaust fan
- Provision for water purifier

### BATHROOM

- Bathroom fittings from Cera / Equivalent

- Wash basins with Italiano composite marble counter in passage
- Sanitary fittings from Cera / Equivalent
- Italiano composite marble door frame
- Printed wall tiles till ceiling level
- Hot & cold water mixer-Cera / Equivalent
- Provision for exhaust fan
- Provision for geyser in Master Bathroom

### PROJECT HIGHLIGHTS

- Entrance lobby
- Internal roads with street lights
- Rain water harvesting system
- Solar water heater as per PCMC norms
- Security cabin
- Fire Fighting System on Each Floor/Each Flat





## Limitless at its finest...

Amenities at the Infinity World are chosen after a lot of careful thinking. It not only uplifts your lifestyle but also ensures luxury and comfort for all. The impressive amenities make sure you experience the best of living at all times. From children's play area to fancy party lawn to a dedicated zone for senior citizen, Infinity World has everything that your family needs.



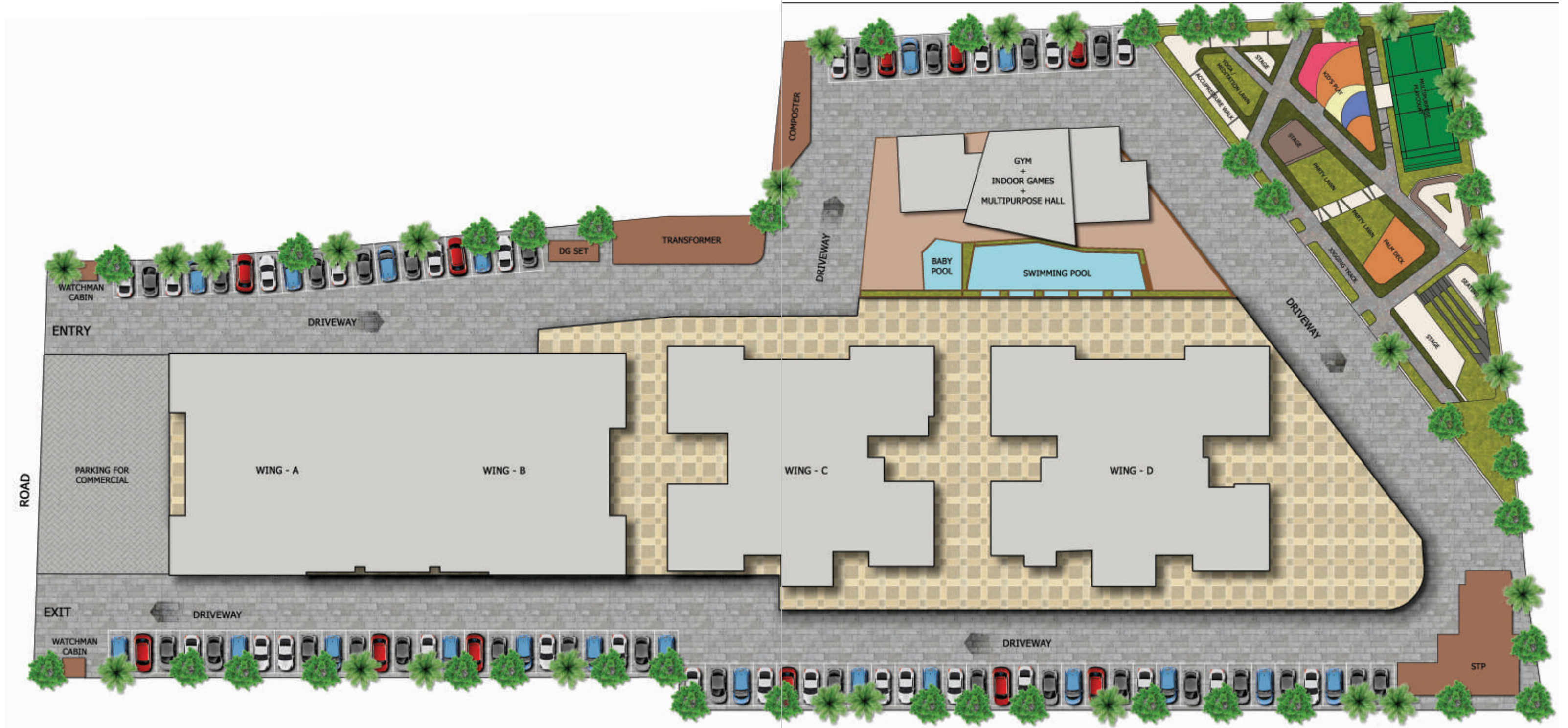


A M E N I T I E S

 Amphitheatre	 Baby Pool	 Club House	 Gymnasium	 Gathering space & senior citizen zone	 Jogging Track
 Garbage Chute	 Kid's play area	 Meditation area	 Mother's den	 Multipurpose court	 Party Lawn
 Palm court	 Tree Cluster	 Swimming Pool	 Space For Yoga	 Society Office with Miniflex	 Provision of MNGL gas pipe line in each flat



# LAYOUT





UNIT PLANS

3 BHK



2 BHK





## ONGOING PROJECTS



 INFINITY  
PRIDE

1 & 2 BHK at Punawale



 INFINITY  
PLANET

1 & 2 BHK at Moshi

## COMPLETED PROJECTS



 INFINITY  
TOWER

1, 2 & 3 BHK at Punawale



**EXOTICA.**

1, 1.5, 2 & 2.5 BHK at Punawale



 TULIP PURPLE  
Rise above the Rest

1, 1.5, 2 & 2.5 BHK at Punawale

## GRAFTING LUXURY AT INFINITY WORLD

- Usha Rangarajan



Infinity world is well- planned and designed by an eminent architect Ms. Usha Rangarajan, CEO, Landmark Design Group

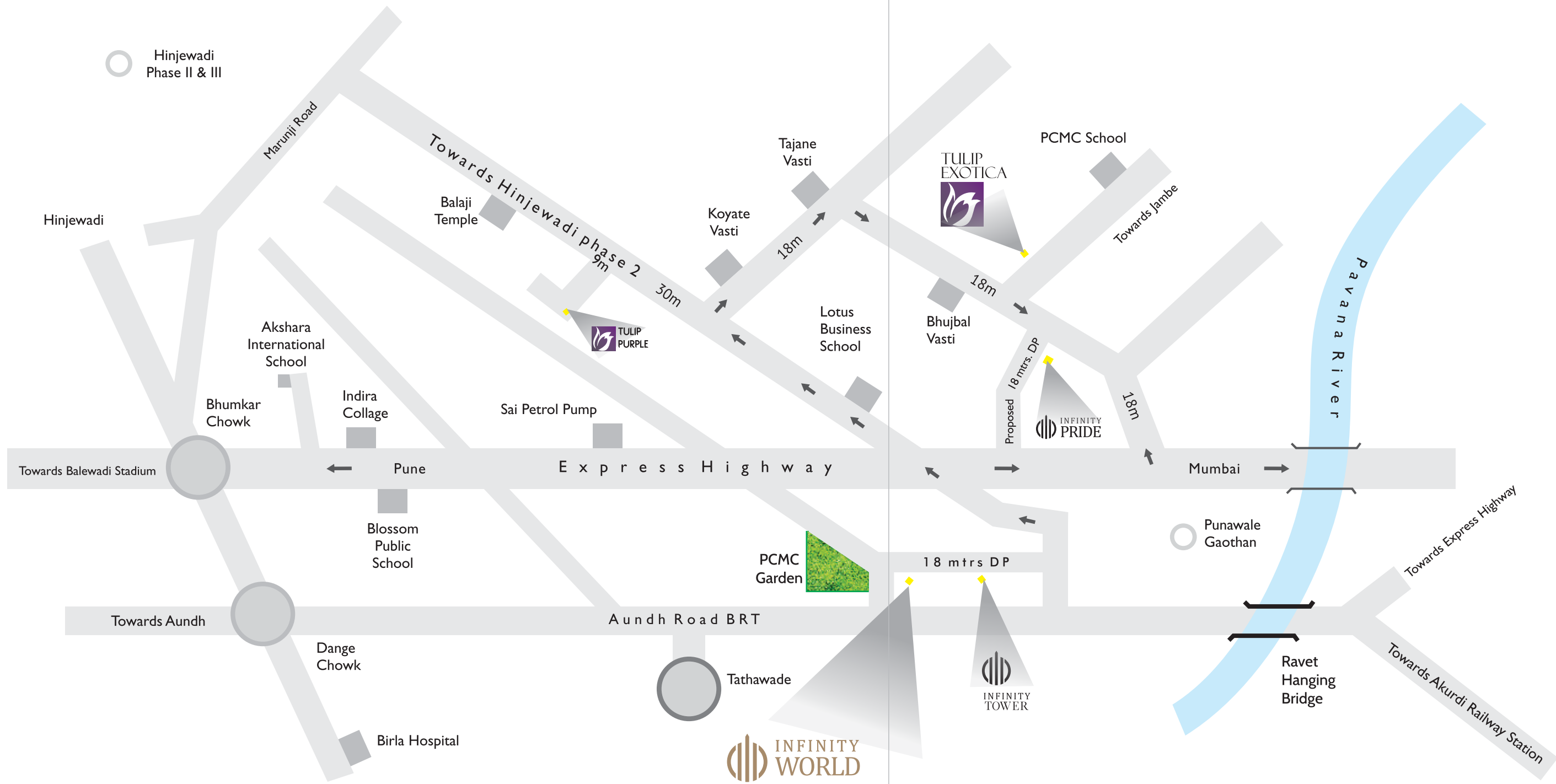
The challenge of Infinity World was to design a project with 2, 3 and 4 BHK luxury homes.

According to me, luxury is not only about premium amenities and finishes but also about spacious interiors and meaningful space division. Infinity world is designed with living spaces that respect your privacy and merge your interiors with exteriors to provide ample natural light and air. I believe in constructing homes that let the energy flow freely and intensify the living experience.

## AWARDS AND RECOGNITION

- AESA Jury Award for group housing project
- AESA Jury Award for 'Private Residences'
- AESA Award 2015 in the 'Commercial Building' category
- AESA Award for institutional building -Administrative building for PCNTDA at Akurdi
- 5 Star GRIHA rating awarded at the hands of Hon. President of India, Mr. Pranab Mukherjee to 'Administrative building for PCNTDA' the first govt. sector building to receive this rating
- Commendation Award by Indian Institute of Architects National Award 2016 in the Institutional Building category
- Corporate office for SKF India - received Platinum LEED rating
- Tune's Pride' - awarded by Ishanya for contribution in the field of sustainable architecture
- 'Pride of Design Award' from A&I magazine
- International Property Awards (UK based) for office interiors in India
- Entrepreneur of the Year 2015 in service sector by the Entrepreneurs International





INFINITY WORLD



## A neighbourhood of boundless joy...

Punawale is one of the most preferred neighbourhood with soaring possibilities for your future. It is one of the fastest developing locales of Pune with futuristic social infrastructures for supreme conveniences and comforts.