



PURVA
CLERMONT
ART OF WORLD LIVING

EXPLORE THE
WORLD *of* CURATED
EXPERIENCES



WorldHome Collection is a holistic perspective to life-spaces in providing conducive, healthy, smart and luxurious living experiences under a unique brand name. Envisioned by industry stalwarts, the idea is to provide an ecosystem where design, nature, technology along with luxuries inspired from world over, are curated with utmost care and passion.

Here is an experience where life cherishes every moment submerged in finest of luxuries. Adding to this evolving lifestyle is a name of trust, Purvankara that has a proven track record of delivering quality lifestyle for more than 4 decades. When experiences from across the world come home, it becomes a true Worldhome.

IT'S TIME TO
EXPERIENCE AND EVOLVE.

PURAVANKARA®



WORLDHOME
COLLECTION



CREDOS THAT MAKE IT A WORLDHOME.



PARTNERING WITH THE BEST

Internationally acclaimed architects, interior designers, landscape planners and globally recognized brands come together to make a masterpiece called WorldHome.



INTEGRATED PLANNING

Created with an integrated planning process where health, wellness, technology and lifestyle are built as an essential part of your life.



SUSTAINABLE AND ENVIRONMENTALLY CONSCIOUS.

Striking a balance with nature is of prime importance to every WorldHome project to ensure that, spaces are built to provide a healthy & thriving environment including sustainable practices.



EXPERIENCES BEYOND AMENITIES.

Every amenity is designed and planned with utmost passion and attention to detail to elevate your living experience.



TECHNOLOGY TO ENABLE SMART LIVING.

A home that responds to your touch. Powered by the cutting edge BluNex Technology, takes smart living to the next level of comfort and sophistication.



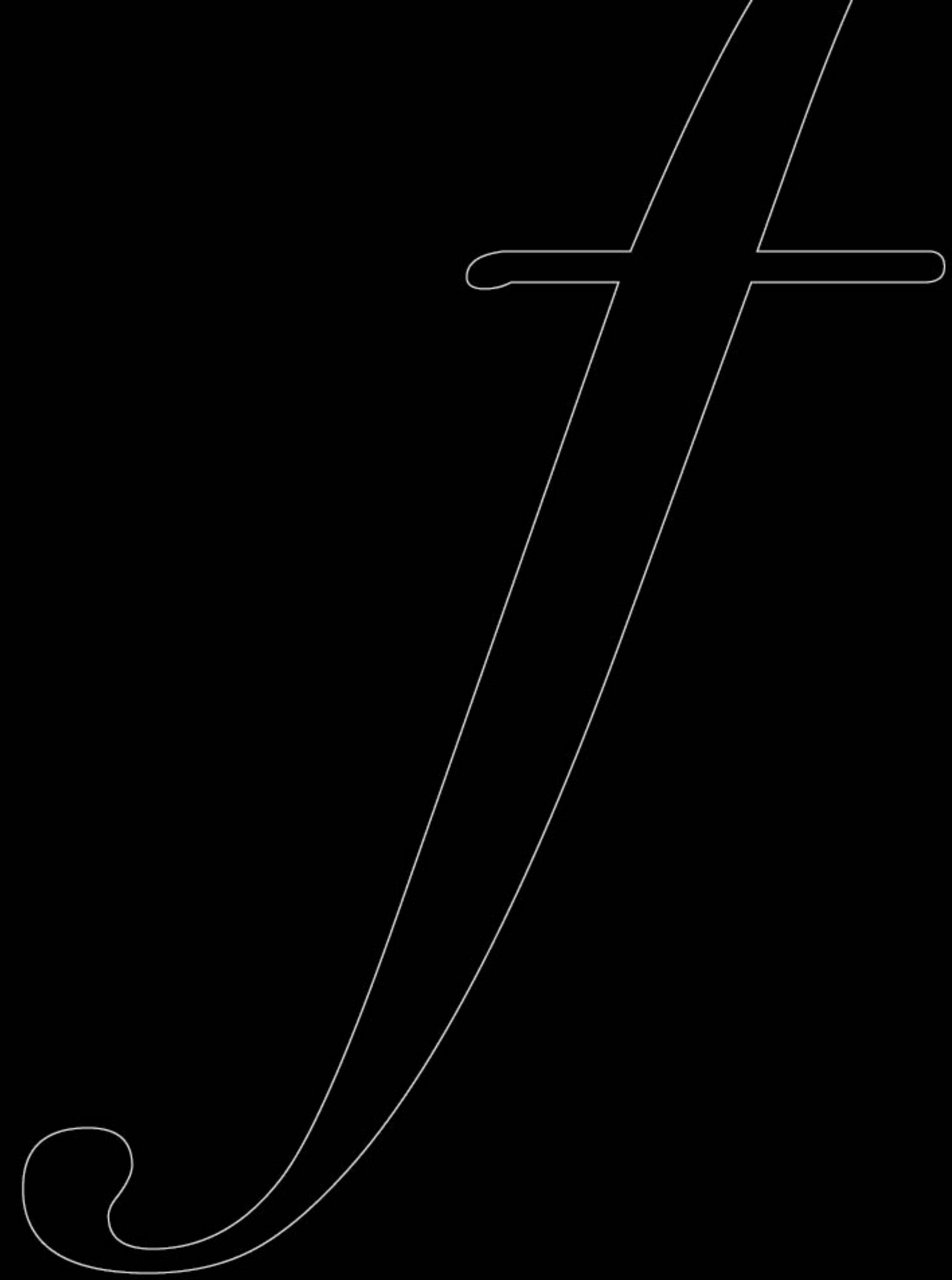
ELITE-LUXURY AND CRAFTSMANSHIP.

Luxury is a matter of superior choice that reflects in every aspect of your WorldHome. Right from grand entrances to a hand picked choice of fittings and flooring, every corner reflects exclusivity and an impeccable craftsmanship.



INTRODUCING
MUMBAI'S

first
WORLDHOME





PURVA
CLERMONT
ART OF WORLD LIVING

Located in the heart of Mumbai, Purva Clermont is an icon of exquisite lifestyle. Conceived by global maestros and inspired by contemporary and sustainable ideas from across the world; this worldhome is truly a collection of global experiences. Presenting a well-connected world with amenities curated from across the globe.

Welcome to Purva Clermont at Chembur. It's time to make the world your home.

IT'S TIME TO
MASTER THE ART
of WORLD
LIVING

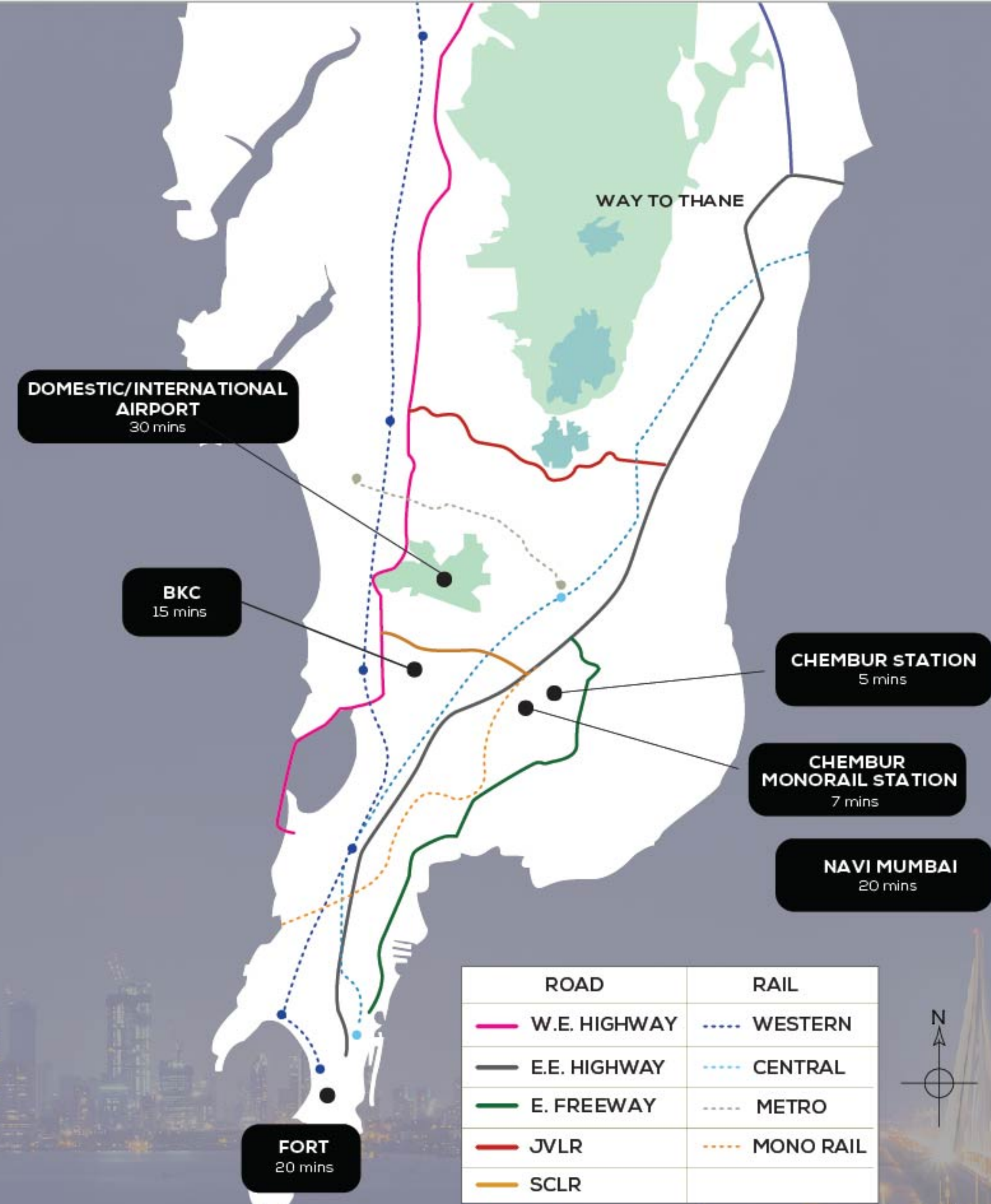


THE
ART
of WORLD
LIVING

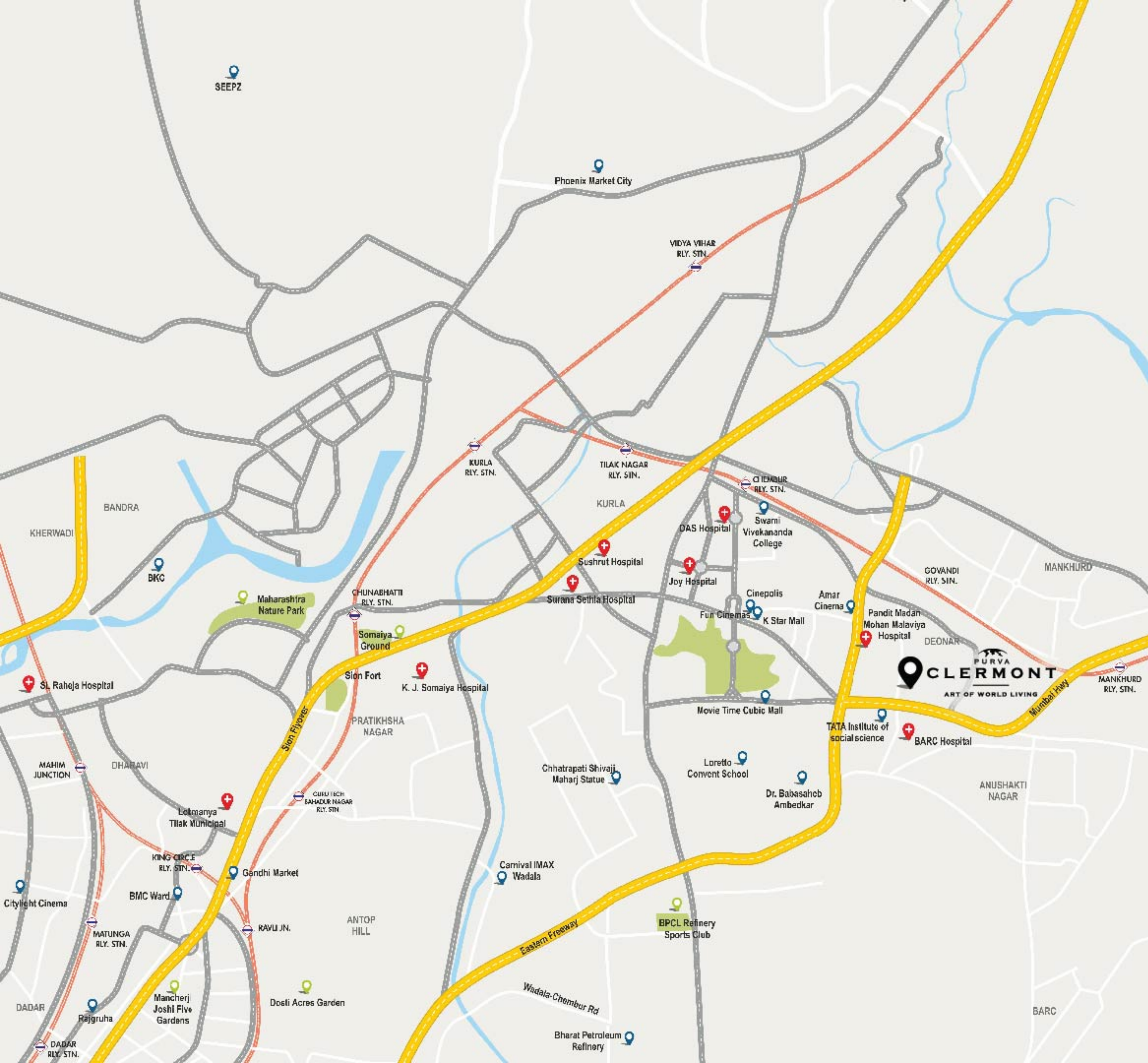
Image is an artistic rendering of the Project and its surroundings. No photos have been shot on site.

EXPERIENCE A WORLD WITH YOU IN THE CENTRE

Chembur. Also known as the heart of Mumbai, will now have you at the heart of it. From work to entertainment, life is well-connected in all avenues. It true when we say, all roads lead through here. From eastern express freeway connecting Navi Mumbai to easter express highway connecting South Mumbai, it's an easy access to all parts of the city. At Purva Clermont we believe, you can't truly be a World citizen if you are not well-connected to your world.



Location map is a digital rendered image. Map not to scale.



WORK

BKC: 15 mins | Fort : 20 mins | Lower Parel: 30 mins
Seepz: 35 mins



TRAVEL

Lokmanya Tilak Terminus: 15 mins | Kurla Station: 15 mins
Proposed Chembur Metro Station : 5 mins | Ghatkopar Metro Station: 20 mins
Monorail: 7 mins | Domestic Airport: 30 mins



CONNECT

SCLR: 10 mins | BKC-Chunabhatti Flyover: 7 mins | Eastern Freeway: 3 mins
Eastern Expressway: 10 mins | Sion Panvel Highway: 15 mins



LEISURE

Short drive to all the prime locations like Powai, Bandra and Colaba

*The travel times mentioned here are estimated and not to be considered as actual as it may vary depending on the day, time and traffic conditions.

TAKING THE

global

EXPERIENCE
TO NEWER HEIGHTS



A world of fine experiences across 3 levels.



EXPERIENCES CRAFTED BY
THE GLOBALLY ACCLAIMED
ANDY FISHER (SINGAPORE)

With 30+ years of experience in Europe and Asia, Andy Fisher is a creative mastermind of unique and environmentally responsive buildings. With projects ranging from resorts to residential complexes, his designs express deep understanding of the environment and locality. His design outcomes are based on innovation and impressions of global diversity. At Purva Clermont, Mumbai's first Worldhome, Andy Fisher has truly redrawn the boundaries of a global lifestyle.

WORLD CITIZENS. WELCOME!

WIDEN YOUR WORLD VIEW. *The Terrace*

Experience a world of fitness to the highest level. Literally. From integrated fitness loop to indoor workout avenues, the rooftop fitness space is a world inspired from global trends.

At 18th floor, fitness is an art not a routine.



THE ZEN DECK

Inspired by New York's notable yoga avenue



HILLPOINT VIEW

An uninterrupted 180-degree view of Chembur



THE ROASTERY URBAN GRILLE

An exclusive BBQ Pit inspired by South Korean culinary Trails

MASTER THE
fine
ART OF FITNESS



Experience a world of fitness to the highest level. Literally. From integrated fitness loop to wellness avenues, the rooftop fitness space is a world inspired by global trends. At 18th floor, fitness is an art, not a routine. Invoke your inner bliss & cherish never before peace of mind in the Zen Deck.



CORE FITNESS

An indoor workout space inspired by Monaco's Fitness Avenues

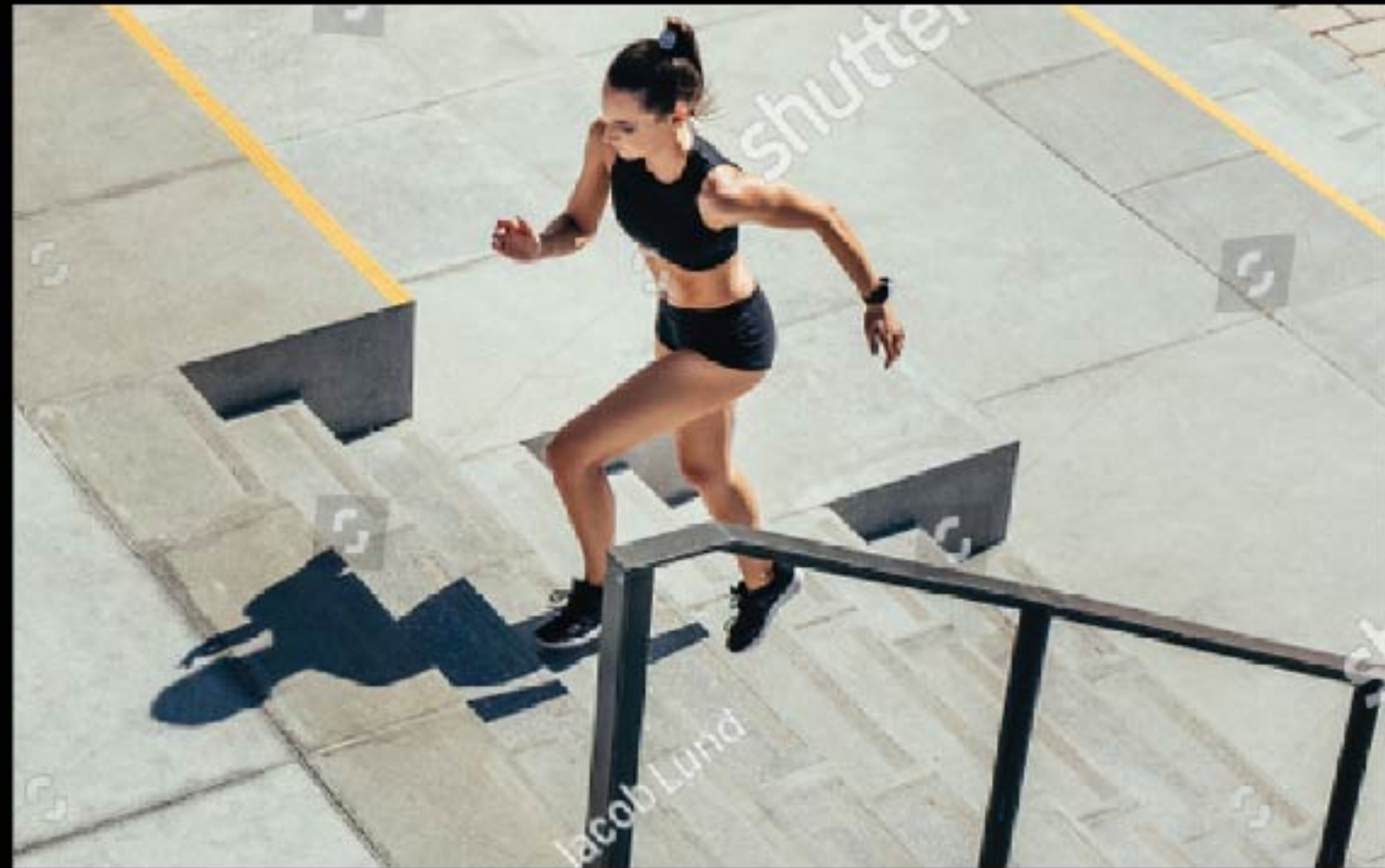
EXHALE

A boutique gymnasium with top-notch luxury equipment

URBAN RUNNER

An integrated fitness loop is inspired by Skyrunner Worldseries

Urban Runner is an integrated fitness loop inspired by the renowned Skyrunner Worldseries. With a 400-meter ground level loop connecting to a 200-meter rooftop track & a 333 stepped vertical climb, here is a fitness avenue to hone your muscles & fitness goals.



DISCOVER
THE *world*
OF GLOBAL
INDULGENCES

The epicentre of entertainment and class, the leisure lounge is exquisitely designed to give you a world experience. This thoughtfully conceived space is dedicated for socialising and leisurely activities. Take a dip or tee it off, be ready to cherish a class apart lifestyle.



INFINITY POOL

Expansive swimming pool at podium level

THE MOUNT ROOM

Indoor party hall for 30 people.



Images of amenities and facilities are a digital rendering and do not depict actual facilities and amenities to be provided. Amenities and facilities provisioned will be as per sanctioned plan and specifications.

THE LINKS

The handpicked lounge powered by Trackman Virtual Golf Simulator



gettyimages®
Aksonov



RENDEZVOUS

with

NATURE'S OWN WORLD

N

BREATHE THE ESSENCE OF NATURE

Inspired by aromatic gardens of **Kyoto, Japan**; is a world of exotic fragrance design for you. Evoking emotions and memories every time you take a walk in this blossoming garden Gardenia, Jasmine & Rose. Nurture the finer details of life.



A ROUTE MAP OF RELAXATION

Inspired by every local park in **Taipei, Taiwan**; the reflexology path help in stimulating various pressure points by walking on an intricate pattern of stones. The way to world living is paved with wellness. It's time to experience it.





MOTHER NATURE IS THE FINEST TEACHER

Inspired by **David Hamilton Park, Ontario**; this nature-inspired play area is set in woodland-featuring log rickety walkways, tree trunk climbing frames and willow branch sculptures in the trees. Let natural curiosity be the best teacher for your child.

Images of amenities and facilities are a digital rendering and do not depict actual facilities and amenities to be provided. Amenities and facilities provisioned will be as per sanctioned plan and specifications.



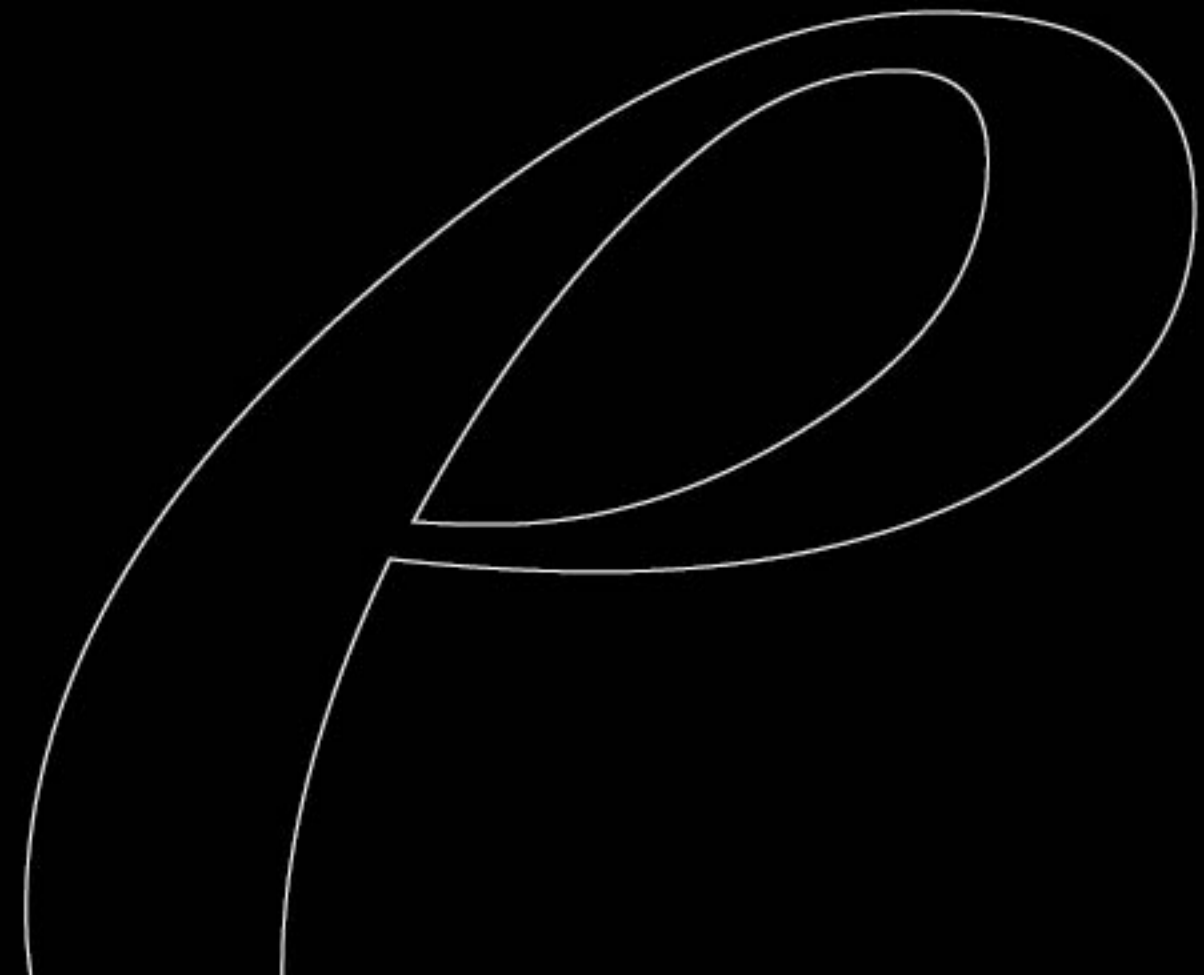
A FINE SETTING FOR A LAZY EVENING

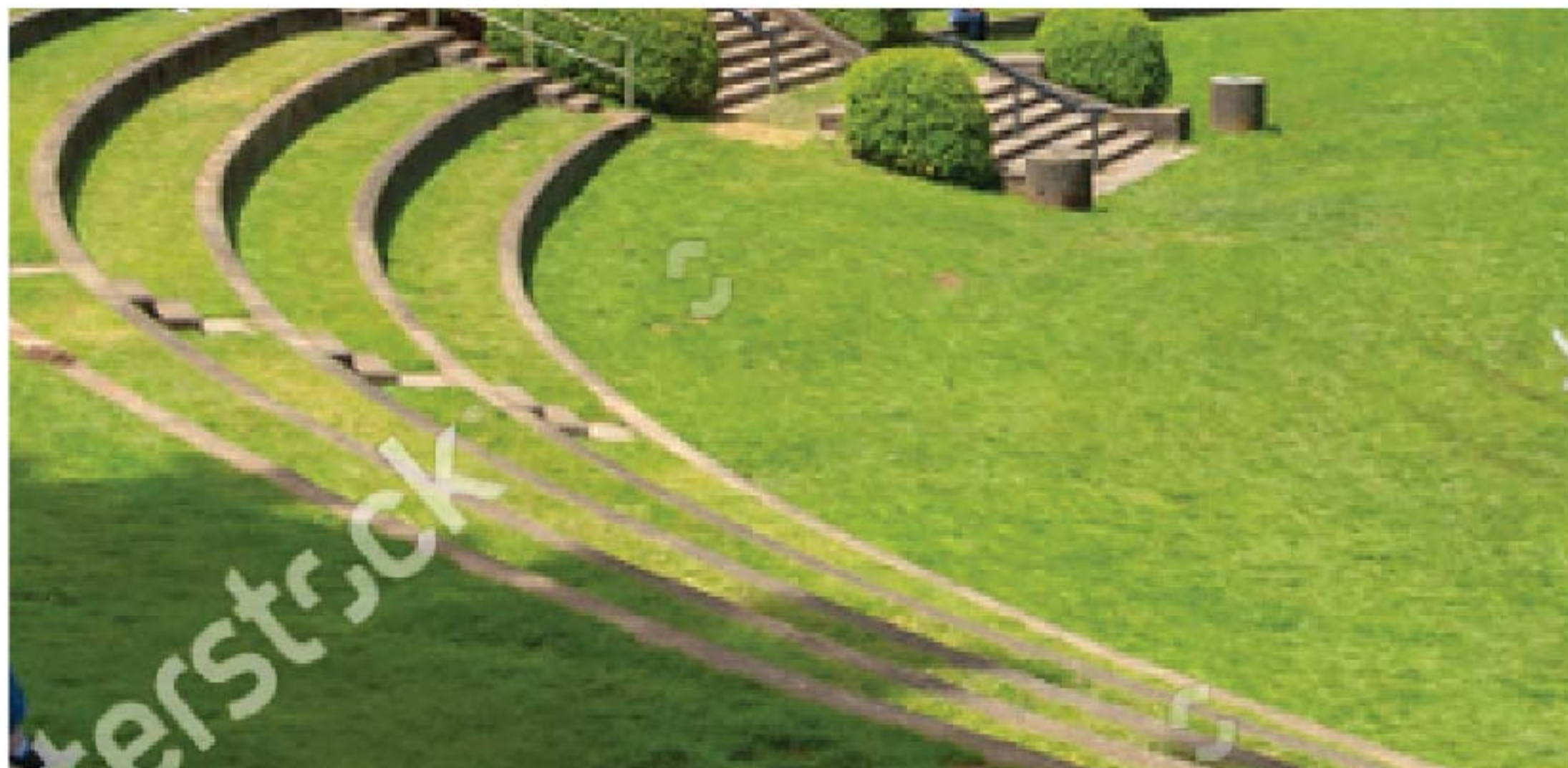
Inspired by the most popular **Asian** tropical architecture, is this well-conceived landscape space with a distinct flair for being in harmony with nature. They say, when the setting is right, sunsets look even better. It's time to unwind in style.

A VIBRANT
ENVIRONMENT

where

YOUR WORLD COMES
ALIVE





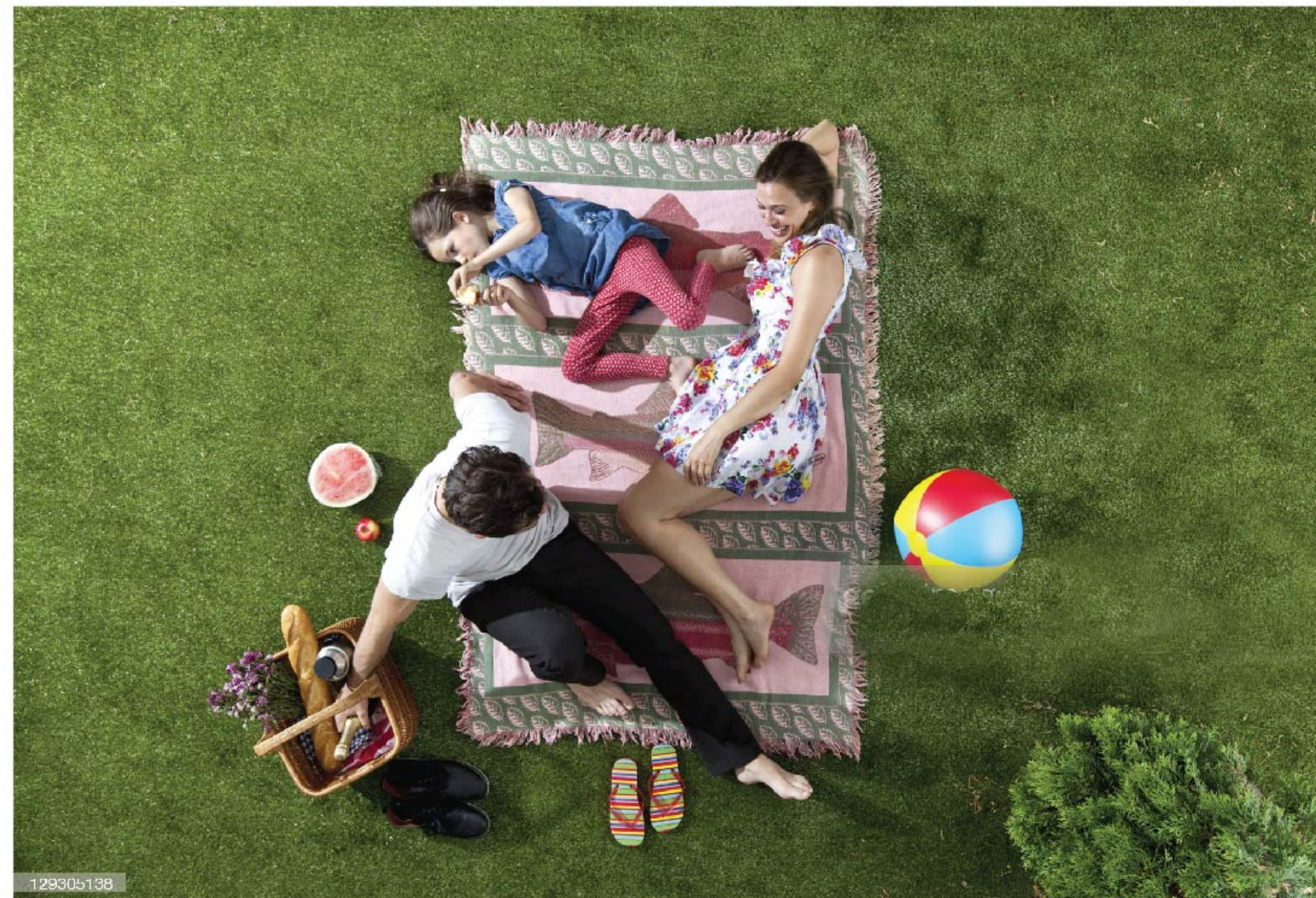
LIFE IS A STAGE WITH A BEAUTIFUL VIEW

A modern style amphitheatre inspired by **Roman Architecture**, acoustic and vibrant performance space, making it ideal place for musical or theatrical performances. The art of merrymaking is also a part world living.

Images of amenities and facilities are a digital rendering and do not depict actual facilities and amenities to be provided. Amenities and facilities provisioned will be as per sanctioned plan and specifications.

EXPERIENCE A FIELD TRIP AT HOME

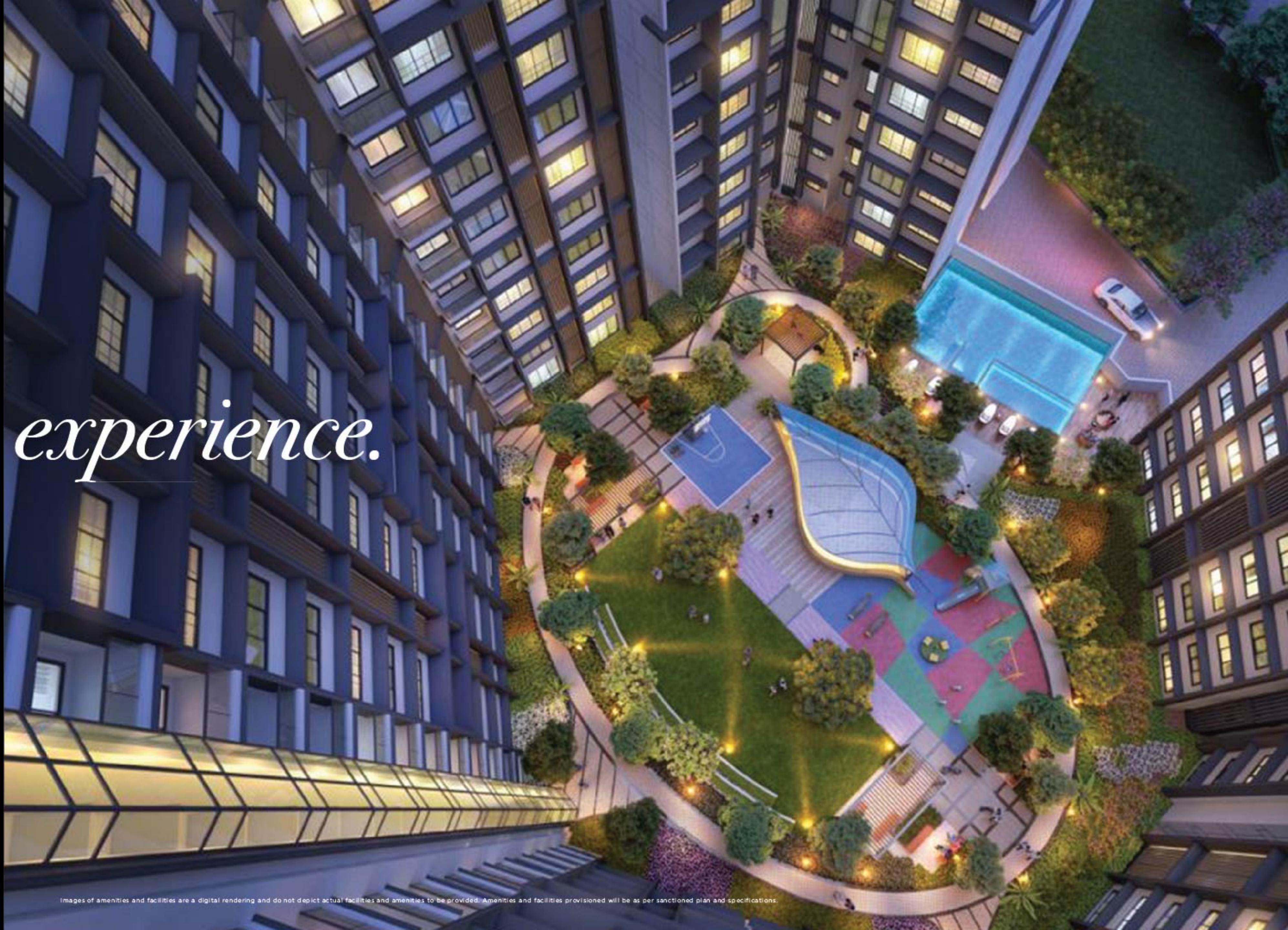
Multipurpose lawns for games, dramatic play, stories of nostalgia or just a place to lay immersed in the earth smell of the grass while watching clouds drift across the sky gives you an experience of countryside picnics and camping in your own yard.



129305138

EXPLORE. INDULGE.

experience.



Images of amenities and facilities are a digital rendering and do not depict actual facilities and amenities to be provided. Amenities and facilities provisioned will be as per sanctioned plan and specifications.

Adventure
AVENUES



Revitalizing
AVENUES

Blissful
AVENUES



WALKWAY & JOGGING TRACK



REFLEXOLOGY PATH



PET ZONE



PARTY LAWN



SWIMMING POOL & KID'S POOL



CHILDREN'S PLAY AREA



AMPHITHEATRE FESTIVE PLAZA



SENIOR CITIZEN SPACE



BASKETBALL HOOP



EVERY STEP
IN A WORLDHOME IS



an

EXPERIENCE TO
CHERISH

Immerse yourself in the delight of world living



ARRIVE IN
style

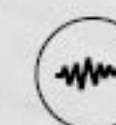


Image is an artistic rendering of the Project and its surroundings. No photos have been shot on site.

THE ART *of* INTELLIGENT HOMES

Introducing BluNex Life, the next generation of intelligent homes. Put together by some of the best technical talent in the country, using Artificial Intelligence solutions and Internet of Things (IOT) to transform the way you live. With a fine blend of cutting-edge technology and easy-to-use innovations, your smart home welcomes you to step into the future.

BluNex Life™
Intelligent Next Gen Homes



INTELLIGENT HOME CONTROLS
BY VOICE & BLUNEX LIFE APP



24X7 CONNECTIVITY TO YOUR HOME
FROM ANY PART OF THE WORLD

Photographs of interiors, surrounding or location are digitally enhanced unless otherwise mentioned. No photos have been shot on site. The user interface on the BluNex app and on other home automation devices including the Google Home may change with time. BluNex Life come with Google Home Device. Please refer to the terms, conditions and relevant disclaimers pertaining to the BluNex Life Package in the specifications document. Requires Wi-Fi, a nearby electrical output and compatible devices.



EMBRACE HOMES REplete WITH FUTURISTIC COMFORTS

Mobile App Enabled Home Automation

High-Tech Main Door Security System

Biometric Main Door Lock

Multiple Lighting & Cooling Settings

Voice Enabled Help

Hands free Music Device

Google Chrome Cast

Hands Free Master Switch

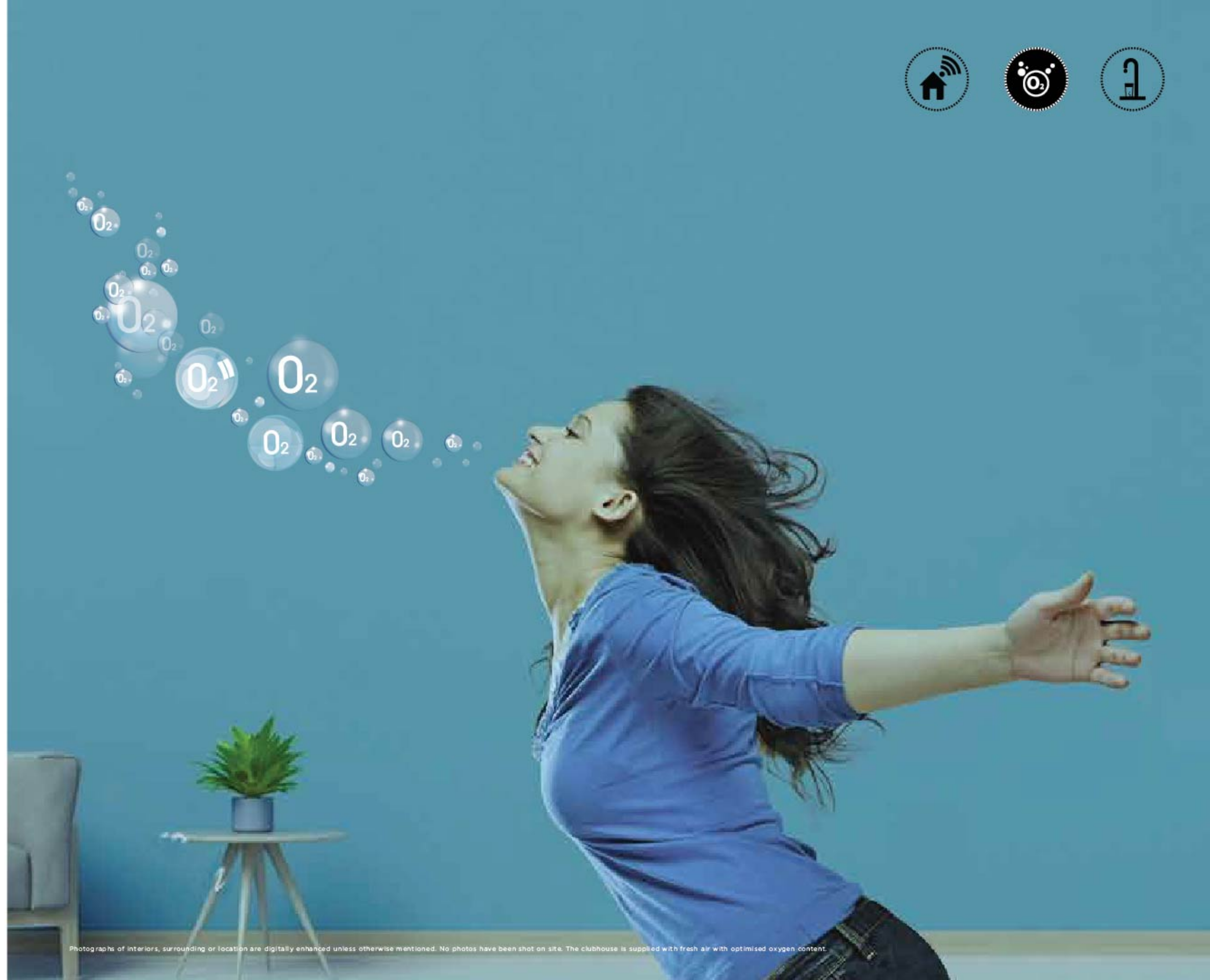
Pre-programmed Morning Settings

Automated Security Features

Wi-Fi Boosters, Intelligent Curtain Control,
Gas Detector, Sensor Lights in Foyer area

THE ART *of* OXYGENATED LUXURY

Air that's rich with oxygen Offers many health benefits including relaxed mental & physical health for your overall well-being. At Purva Clermont, this is exactly why we supply a fresh dose of oxygen at regular intervals at your clubhouse. Visit the oxygen clubhouse and feel rejuvenated.



TAP ON TO
PURE WAY
of LIFE

Gone are the days when you need to put up a water purifier. We have proficiently brought together two state-of-the-art technologies - UF, and UV to ensure you consume the cleanest water right off your kitchen tap. Processed through a centralised treatment plant, the water is filtered multiple times with sediment filters, activated carbon filters and membrane filters, and stored in a stainless steel tank, so you enjoy the purest access to high quality drinking water.



LET ELEGANCE
TAKE OVER
WHEREVER *you*
STEP



LIVING ROOM

CHERISH
OPULENCE
at ITS BEST



Image is an indicative digital rendering for representational purposes only. Furniture, fittings, decorative items, and accessories shown in the picture will not be provided with the apartment.

REVERE A
MAGNIFICENT
ENCLAVE
of LEISURE



Image is an indicative digital rendering for representational purposes only. Furniture, fittings, decorative items, and accessories shown in the picture will not be provided with the apartment.

Masterplan

LEGEND

ENJOY THE BLISS OF NATURAL ESCAPDES AT ZERO LEVEL

1. Log Benches
2. Wood Play
3. Climbing Log
4. Fallen Tree Play
5. Camping Area
6. Hammock Zone
7. Barbeque Deck
8. Picnic Area
9. Tree Climbing / Zip-lining
10. Drop-off and Waiting
11. Pet Zone
12. Security Gate
13. Walkway / Jogging Track
14. Reflexology Path
15. Car Wash

PODIUM INDULGENCES TO REVERE A REWARDING LIFE

16. Amphitheatre
17. Lawn
18. Plaza
19. Seating Alcove
20. Children Play Area
21. Practice Basket Ball Court
22. Gathering Space
23. Skylight
24. Senior Citizen Space
25. Pool Deck
26. Kids Pool
27. Swimming Pool
28. Walkway / Jogging Track
29. Green Zone

ROOFTOP INDULGENCES TO EMBRACE A SIGNATURE LIFESTYLE

30. Yoga Deck
31. Tranquillity Zone
32. Gazebo with Seating
33. Viewing Deck
34. Barbeque
35. Outdoor Media Wall
36. Seating Space
37. Workspace Area



PURAVANKARA®

Putting people first is at the heart of Puravankara. With over 45 years in real estate, Puravankara stands tall as one of the top 4 developers in India. A credo of uncompromising values, customer-centricity, robust engineering, and transparent business operations, has earned the company many accolades; from both customers and the stakeholders at large. Popular for its unique conceptualizing sensibilities, Puravankara is not just exploring theme-based projects but also adapting and executing bold new living concepts. Over the years, brand Puravankara has grown from strength to strength and has completed close to 45 million square feet (both Puravankara and Provident) out of which 66 projects are residential. Not surprisingly, today Puravankara is home to over 45,000 happy families.



AMONGST THE TOP 4 LISTED DEVELOPERS IN INDIA



REDEFINING SKYLINES OF 9 MAJOR CITIES



45 YEARS OF REAL ESTATE DEVELOPMENT



WINNER OF INNUMERABLE AWARDS



45 MN. SQ. FT. DELIVERED



60+ ICONIC PROJECTS



1 LAC+ HAPPY RESIDENTS

Image is an artistic rendering of the Project and its surroundings. No photos have been shot on site.

COME,
BE A PART
of A RICH
LEGACY



TAP ON TO
PURE WAY
of
LIFE

PURAVANKARA®

Site address: Off. SION Panvel Highway, China Bistro Lane, Chembur, Mumbai

Corporate address: Puravankara Limited, 130/1, Ulsoor Road, Bangalore - 560042

Call: 080 44 555 555 / 1860 208 0000

Web: www.puravankara.com | Mail: sales@puravankara.com

This project is registered via Maha RERA No. (P51800028427), (P51800028428), (P51800028494), (P51800028492) and is available on the website <https://maharera.mahaonline.gov.in>
This project is financed by L & T finance Ltd.

The images used in the brochure is indicative of style only. The photographs of the interiors, surrounding views and location may have been digitally enhanced or altered and do not represent actual or surrounding views. Standard fittings and finishes are subject to availability and vendor discretion. The images shown in the brochure are not standard and will not be provided as a part of an apartment. The information contained herein is believed to be true but not guaranteed. The colors of the buildings are indicative. This is a reference document intended only to provide generic information and does not constitute an offer or contract.