

**Mahindra**®  
Happinest











---


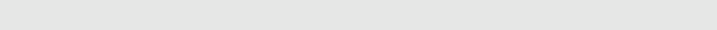
**Tathawade**

The RERA number must be reflected in the top right corner of all the advt. as follows:

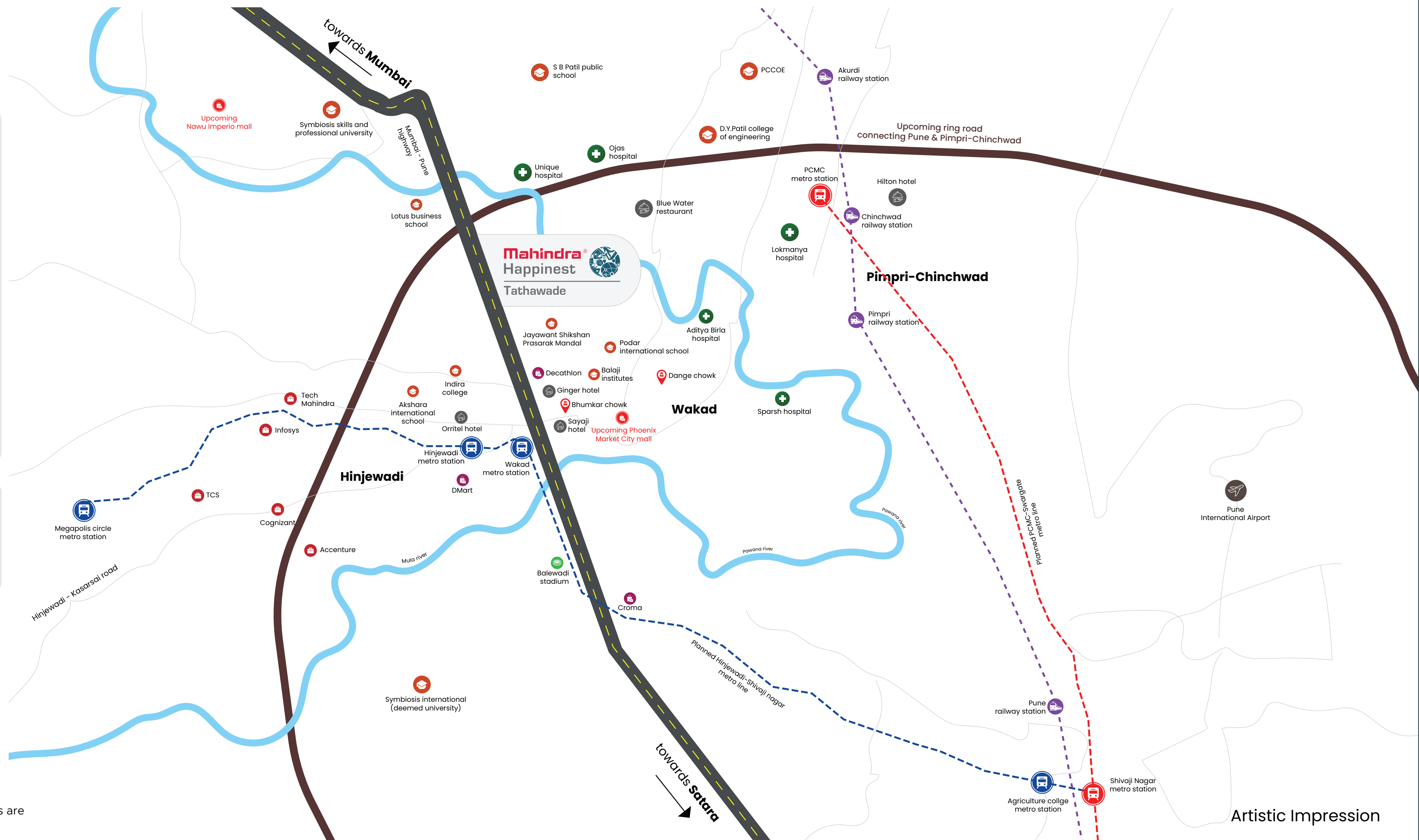
MahaRERA no.: Phase 1 - P52100028049 | Phase 2 - P52100045388. For more details visit <http://maharera.mahaonline.gov.in>

# LOCATION MAP

-  Educational institute
-  Railway station
-  Retail
-  Hospital
-  Office
-  Hotel & restaurant
-  Airport
-  Stadium

-  Planned Hinjewadi-Shivaji nagar metro line
-  Planned PCMC-Swargate metro line

- Upcoming infrastructure :
1. 170 km ring road encircling Pune & Pimpri-Chinchwad
  2. Upcoming Phoenix mall
  3. Upcoming Nawu mall



Artistic Impression

\*Map not to scale. Landmarks and upcoming developments are indicative and as per data available in the public domain

# MASTER PLAN

## 1. CLUB HOUSE IN OPEN SPACE

### Ground Floor

- (a) Multipurpose hall with options for Party Hall, Yoga & meditation

### First Floor

- (b) Indoor games room with Table tennis table, Carrom Area cum Library, Pool game, Putting green

## 2. FITNESS CENTER (CLUB HOUSE) IN MLCP BUILDING

### Ground Floor

- (a) Badminton court
- (b) Indoor games area
- (c) Squash Court
- (d) Gym

## 3. GROUND RG OPEN SPACE

- |                               |                     |                             |
|-------------------------------|---------------------|-----------------------------|
| (a) Organic farm              | (n) Obstacle course | (a) Multipurpose court      |
| (b) Fruit orchard             | (o) Rope walk       | (b) Party Lawn              |
| (c) Pavilion seating          | (p) Ladder walk     | (c) Children's' Play Area   |
| (d) Forest trail              | (q) Swing bridge    | (d) Meditation lawn         |
| (e) Clubhouse spill over lawn | (r) Tarzan poles    | (e) Fragrance garden        |
| (f) Cricket pitch             | (s) Climbing planks | (f) Informal working pods   |
| (g) Medicinal Groove walk     | (t) Adventure walk  | (g) Active - Passive ribbon |
| (h) Reflexology path          | (u) Balance walk    | (h) Leisure Lawn            |
| (i) Butterfly Garden          | (v) Mud walk        | (i) Outdoor Gym             |
| (j) Pet walk                  | (w) Rope bridge     | (j) Reflexology path        |
| (k) Fragrance garden          | (x) Obstacle run    | (k) Futsal court            |
| (l) Tent & camping arena      | (y) Running course  | (l) Kabbadi court           |
| (m) Floral walk               |                     | (m) Fitness activity wall   |

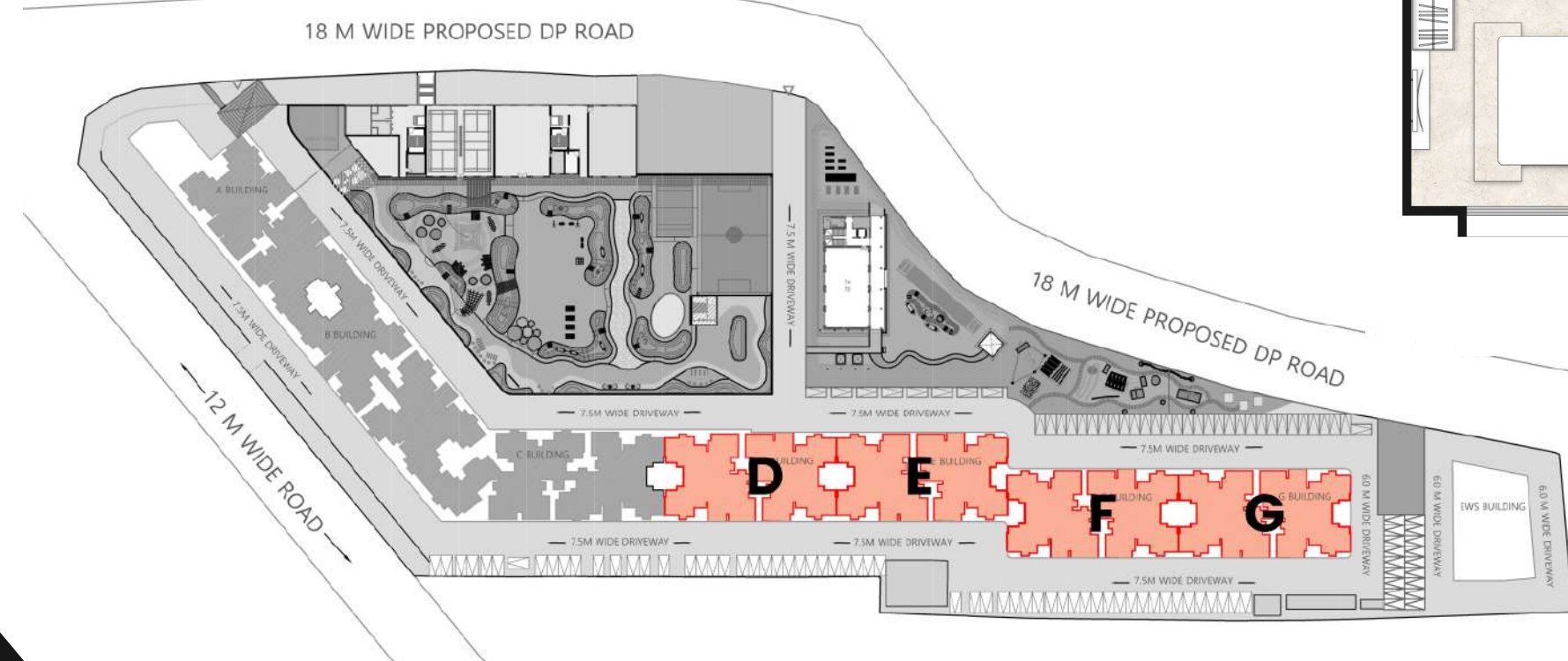
## 4. MLCP TOP

- |                                     |                                    |
|-------------------------------------|------------------------------------|
| (n) Skating Rink                    | (aa) Climbing rings                |
| (o) Obstacle course                 | (bb) Amphitheatre                  |
| (p) Meeting and event zone          | (cc) Open Theatre                  |
| (q) Climbing pyramid with rope      | (dd) Kids climbing & graffiti wall |
| (r) Slide & wooden plank with holds |                                    |
| (s) Climbing Net                    |                                    |
| (t) Hola hoops                      |                                    |
| (u) Play wall with rings            |                                    |
| (v) Trampoline                      |                                    |
| (w) Barrel walk                     |                                    |
| (x) Wave bar with rope net          |                                    |
| (y) Xylophone                       |                                    |
| (z) Lifesize board game             |                                    |



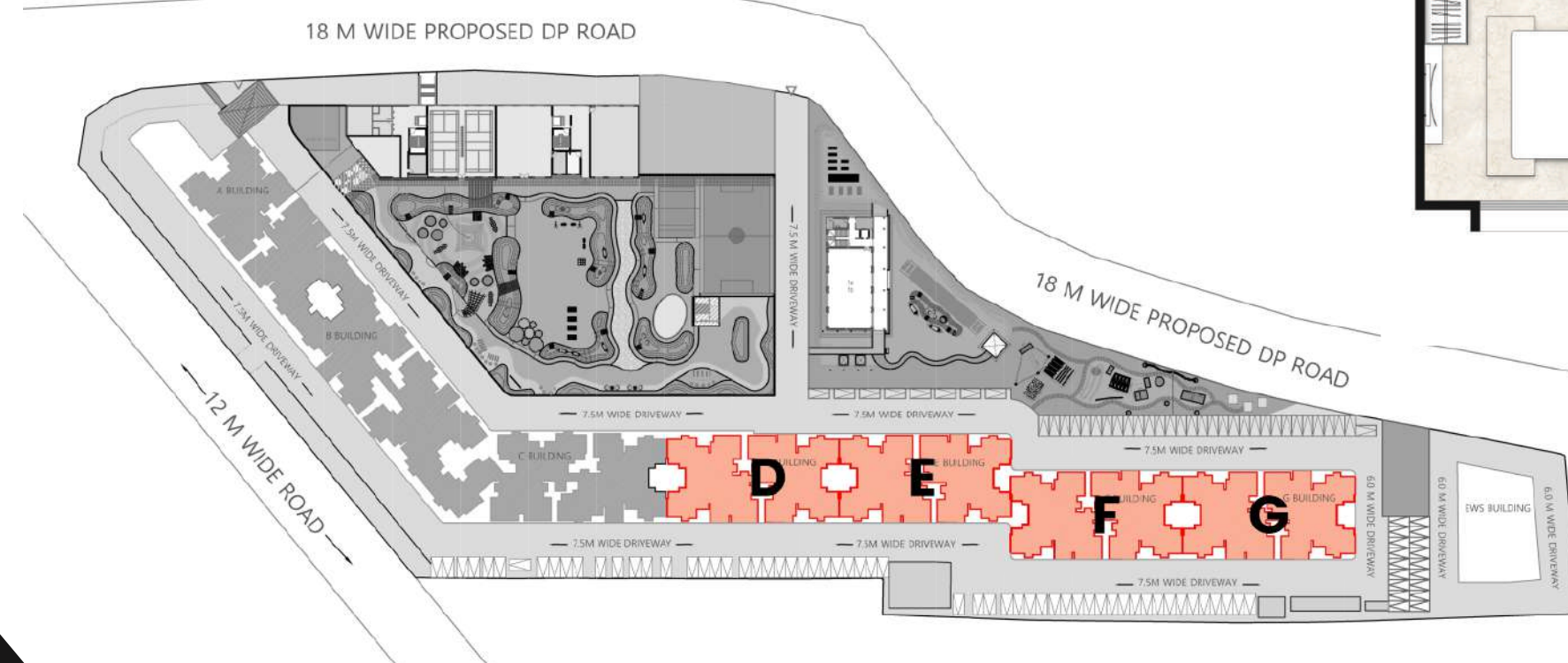
Artistic Impression

# TYPICAL FLOOR PLAN TOWER D, E, F & G



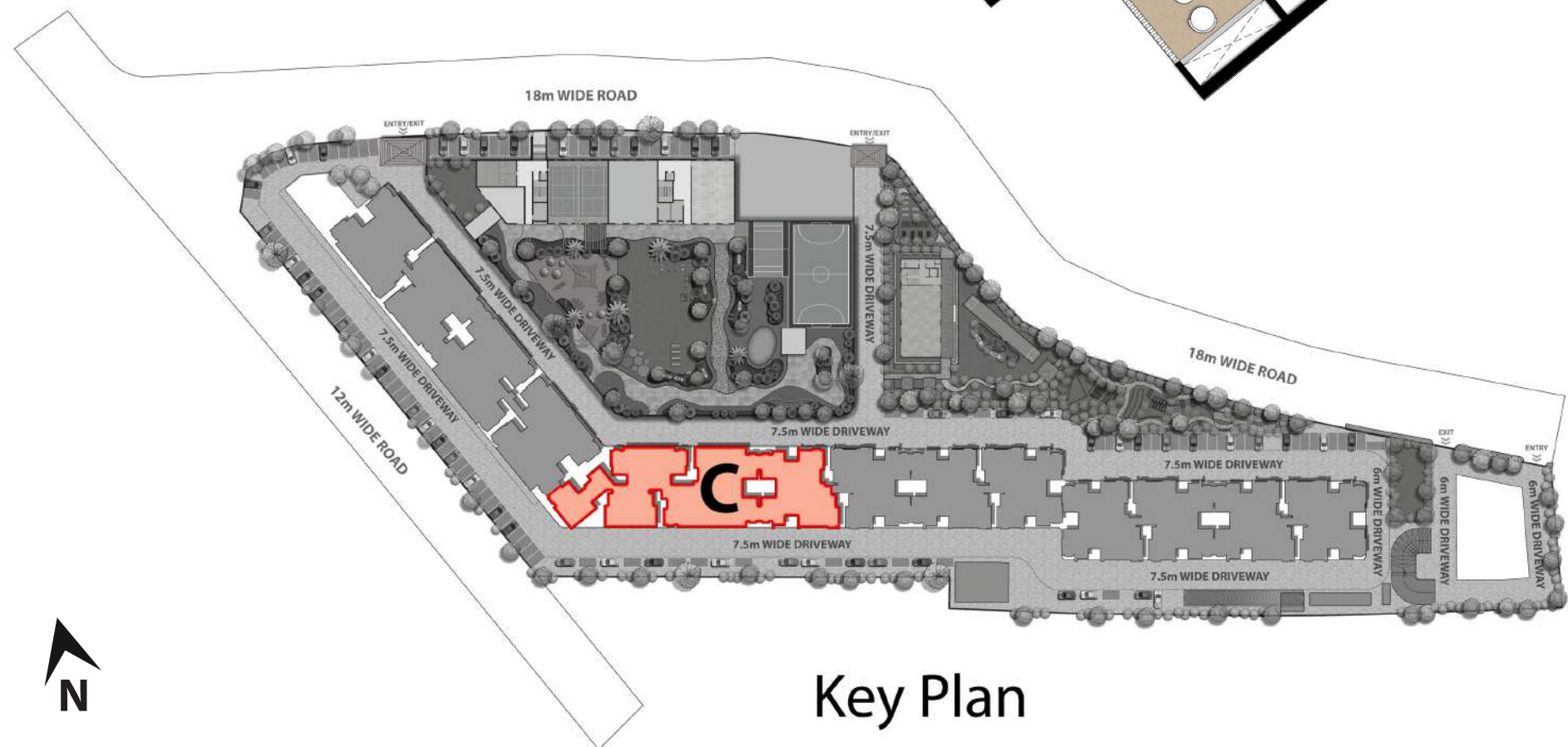
Artistic Impression

# REFUGE FLOOR PLAN TOWER D, E, F & G



Artistic Impression

# TYPICAL FLOOR PLAN TOWER C



Key Plan

Artistic Impression

# REFUGE FLOOR PLAN TOWER C



Key Plan

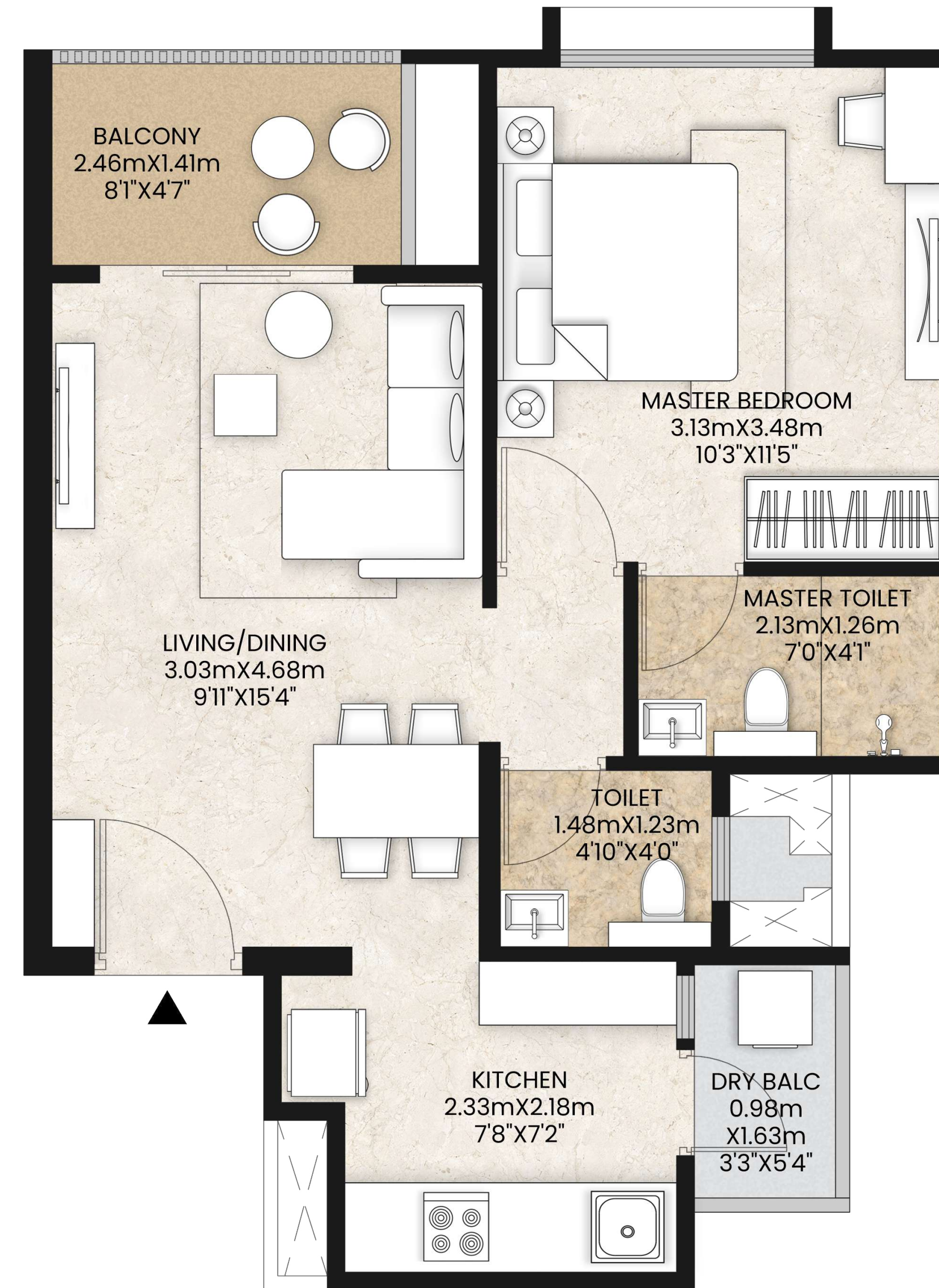
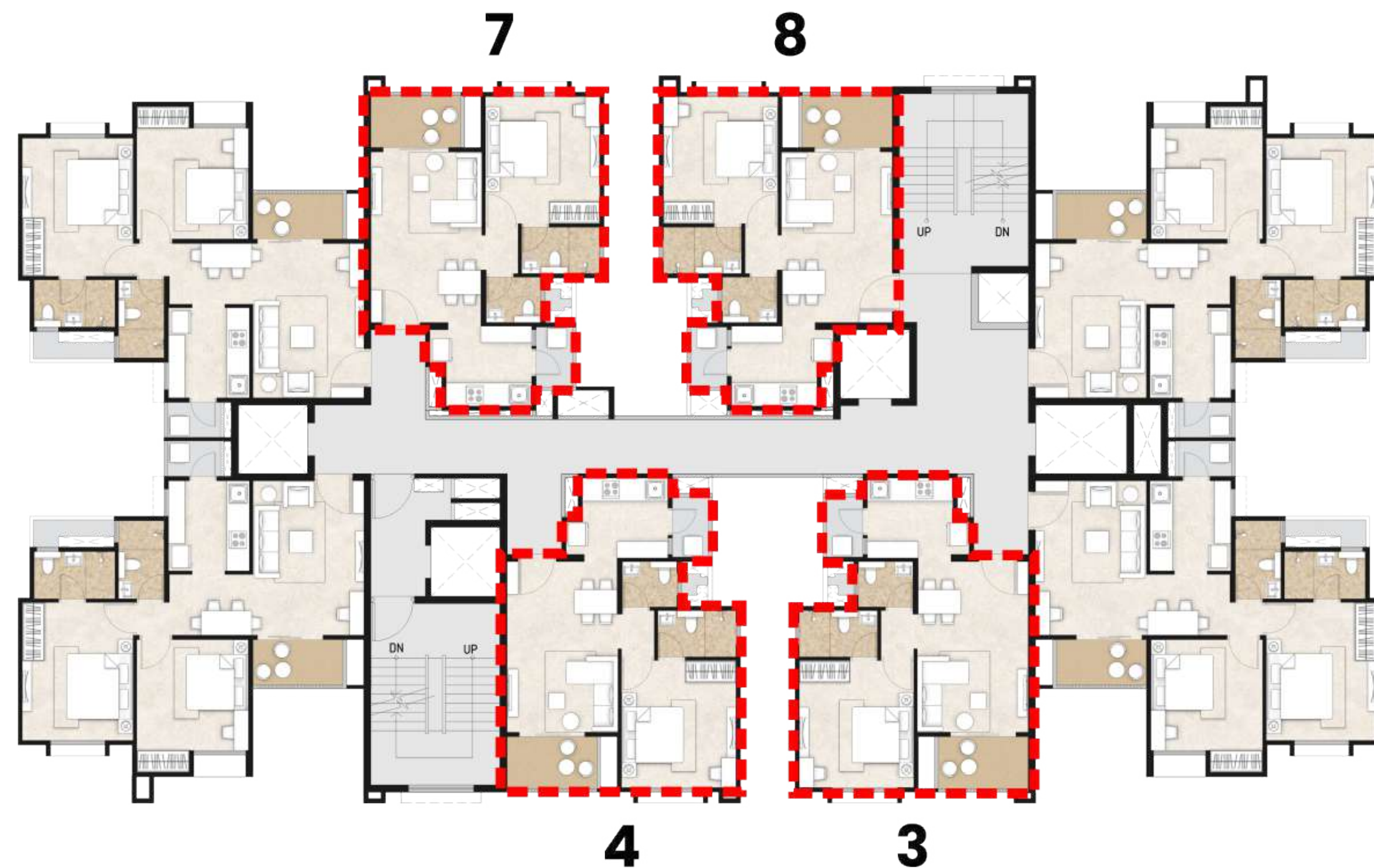


Artistic Impression

# 1 BHK | Tower D, E, F & G

	m <sup>2</sup>	Sq.ft.
RERA Carpet Area	38.62	415.71
Balcony	3.45	37.13
Dry Balcony	1.60	17.19
<b>Aggregate Area<sup>7</sup></b>	<b>43.67</b>	<b>470.03</b>

<sup>7</sup>>Aggregate Area includes RERA Carpet Area, Balcony and Dry Balcony



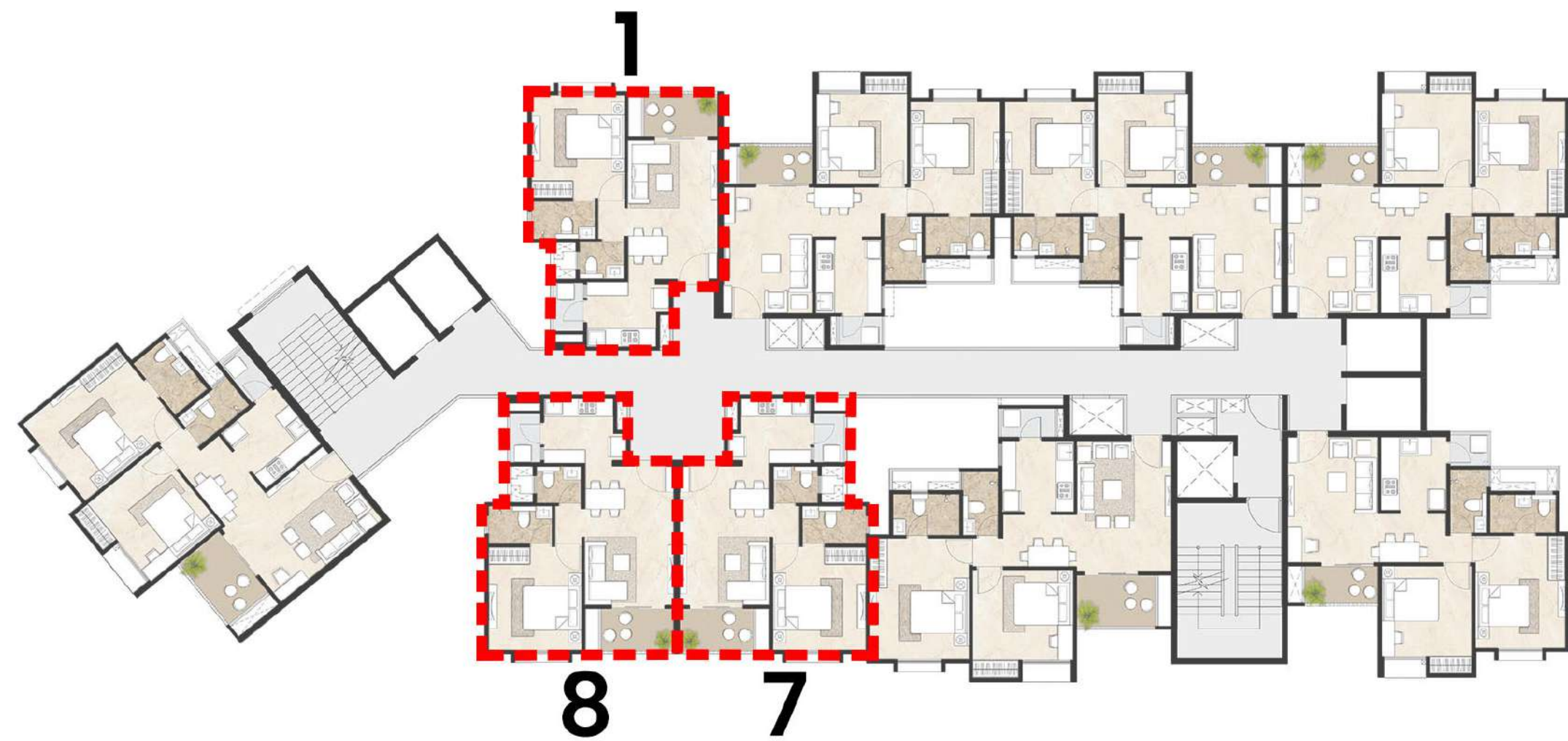
Artistic Impression



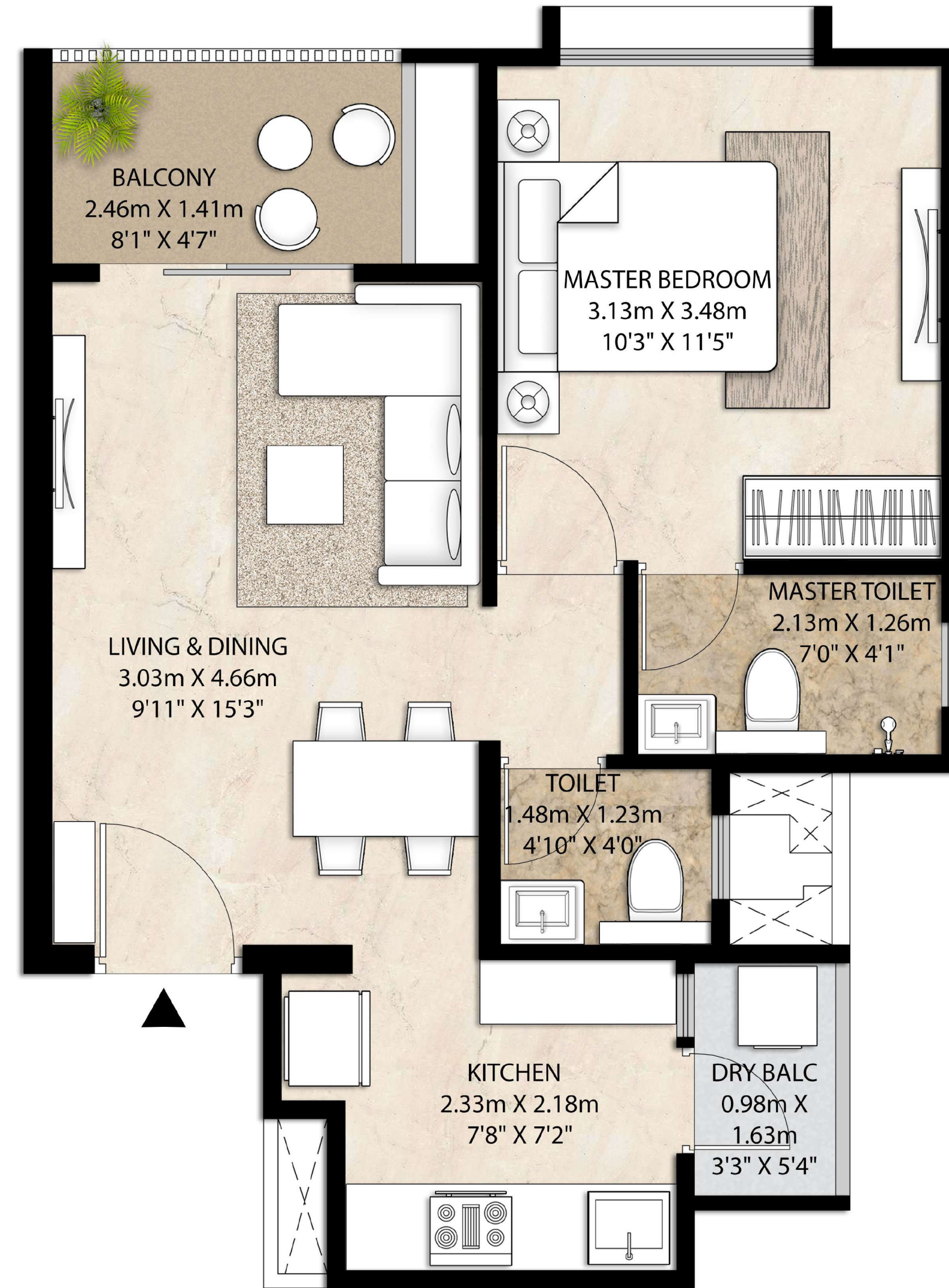
# 1 BHK | Tower C

	m <sup>2</sup>	Sq.ft.
RERA Carpet Area	38.62	415.71
Balcony	3.45	37.13
Dry Balcony	1.60	17.19
<b>Aggregate Area<sup>2</sup></b>	<b>43.67</b>	<b>470.03</b>

<sup>2</sup>>Aggregate Area includes RERA Carpet Area, Balcony and Dry Balcony



KEY PLAN

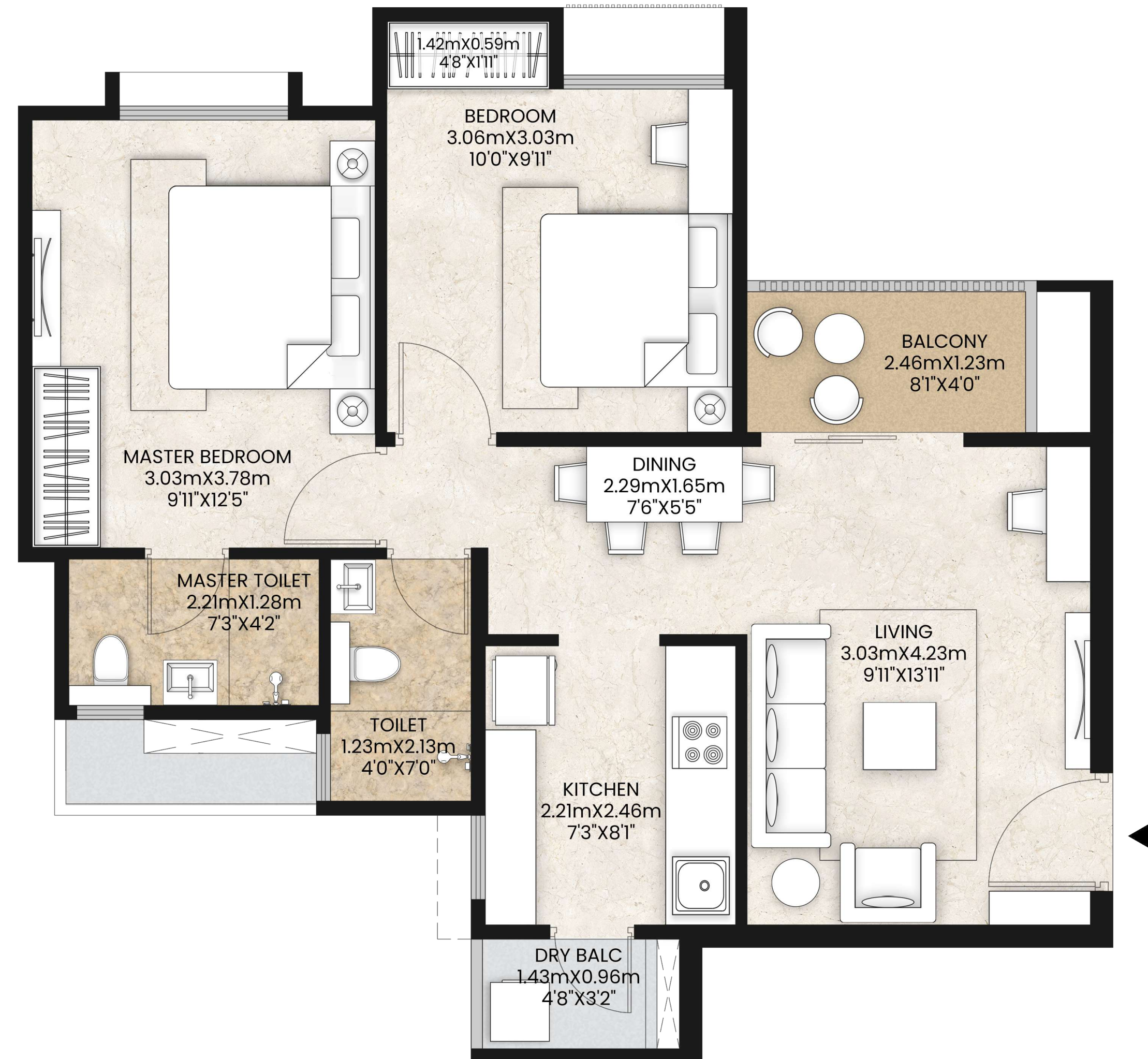


Artistic Impression

# 2 BHK A | Tower D, E, F & G

	m <sup>2</sup>	Sq.ft.
RERA Carpet Area	53.15	572.11
Balcony	3.02	32.51
Dry Balcony	1.37	14.70
<b>Aggregate Area<sup>7</sup></b>	<b>57.54</b>	<b>619.32</b>

<sup>7</sup>>Aggregate Area includes RERA Carpet Area, Balcony and Dry Balcony



Artistic Impression

# 2 BHK A | Tower C

	m <sup>2</sup>	Sq.ft.
RERA Carpet Area	53.15	572.11
Balcony	3.02	32.51
Dry Balcony	1.37	14.70
<b>Aggregate Area<sup>2</sup></b>	<b>57.54</b>	<b>619.32</b>

<sup>2</sup>>Aggregate Area includes RERA Carpet Area, Balcony and Dry Balcony



KEY PLAN

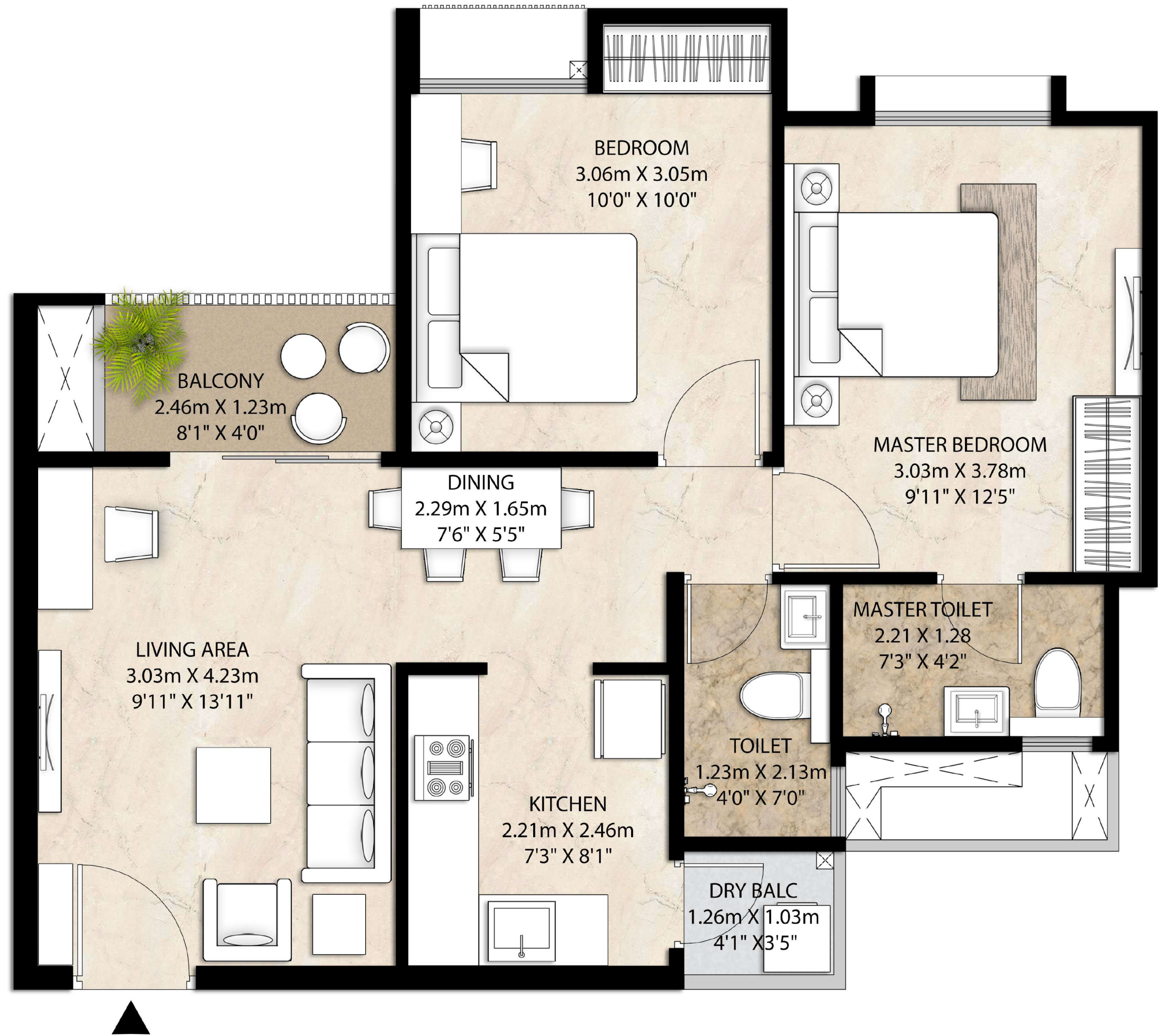


Artistic Impression

# 2 BHK D | Tower C

	m <sup>2</sup>	Sq.ft.
RERA Carpet Area	53.15	572.11
Balcony	3.02	32.51
Dry Balcony	1.37	14.70
<b>Aggregate Area<sup>2</sup></b>	<b>57.54</b>	<b>619.32</b>

<sup>2</sup>>Aggregate Area includes RERA Carpet Area, Balcony and Dry Balcony



KEY PLAN

Artistic Impression

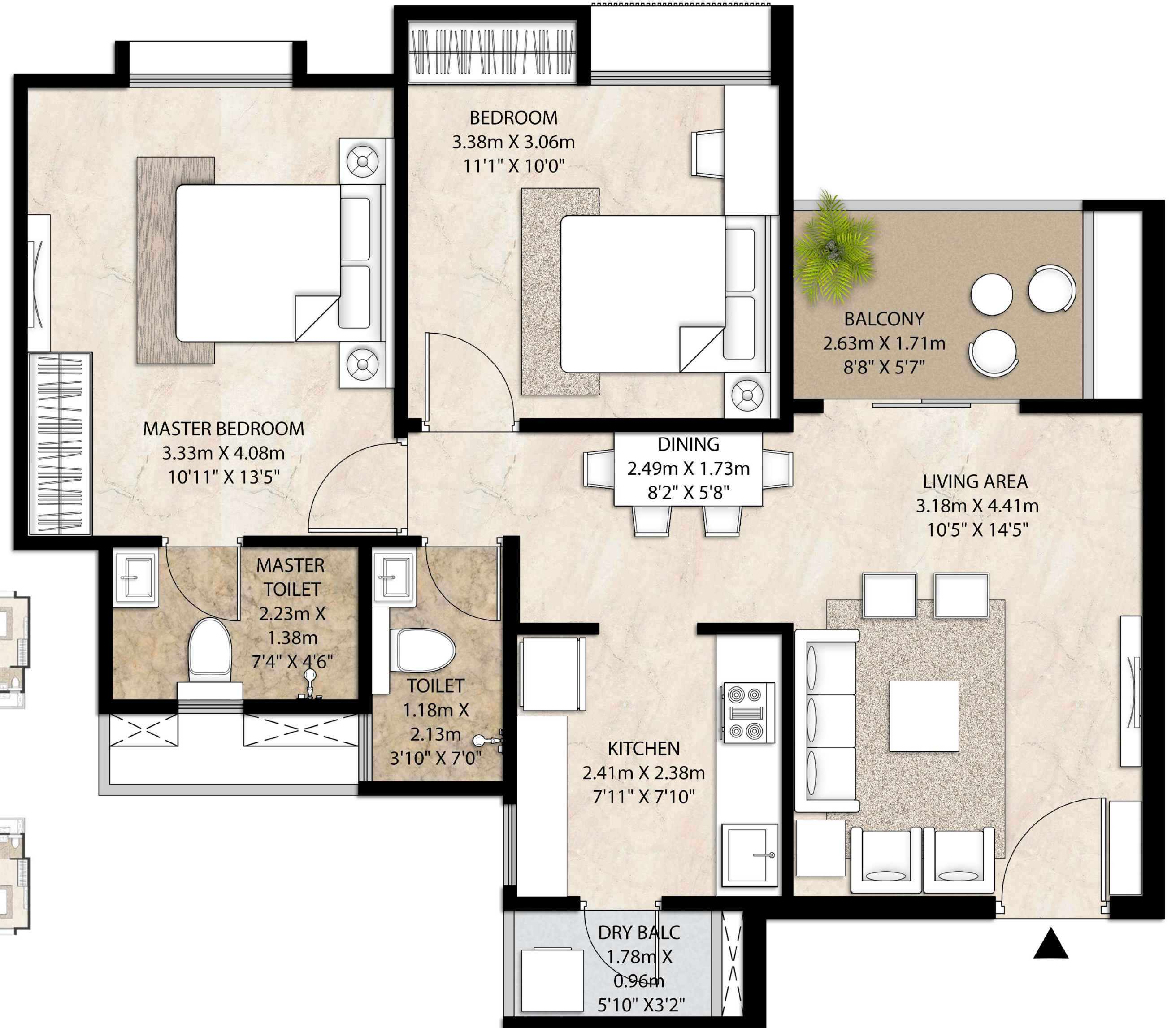
# 2 BHK B | Tower C

	m <sup>2</sup>	Sq.ft.
RERA Carpet Area	59.08	635.88
Balcony	4.48	48.27
Dry Balcony	1.70	18.30
<b>Aggregate Area<sup>2</sup></b>	<b>65.26</b>	<b>702.45</b>

<sup>2</sup>>Aggregate Area includes RERA Carpet Area, Balcony and Dry Balcony



KEY PLAN

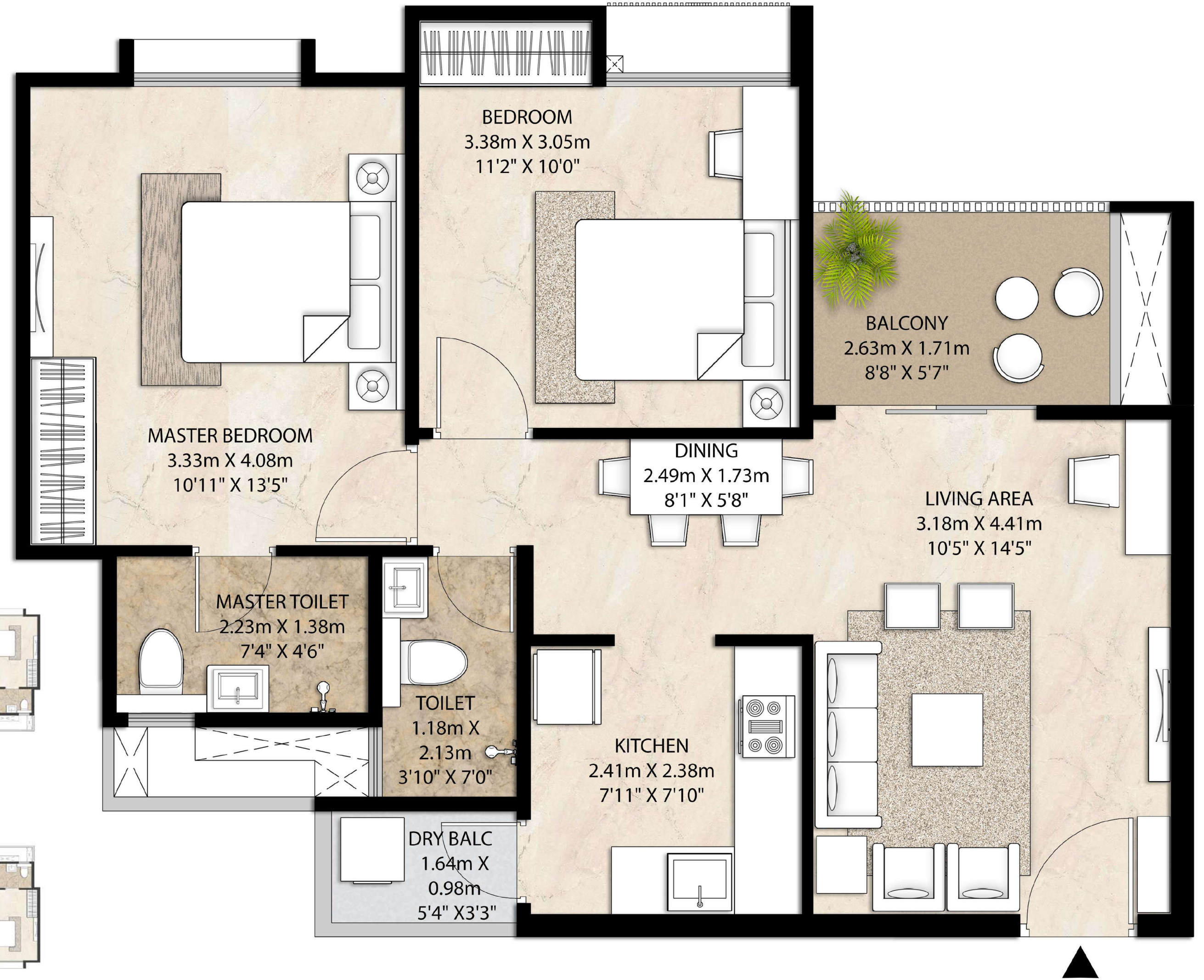


Artistic Impression

# 2 BHK C | Tower C

	m <sup>2</sup>	Sq.ft.
RERA Carpet Area	59.08	635.88
Balcony	4.48	48.27
Dry Balcony	1.70	18.30
<b>Aggregate Area<sup>2</sup></b>	<b>65.26</b>	<b>702.45</b>

<sup>2</sup>>Aggregate Area includes RERA Carpet Area, Balcony and Dry Balcony



KEY PLAN



Artistic Impression

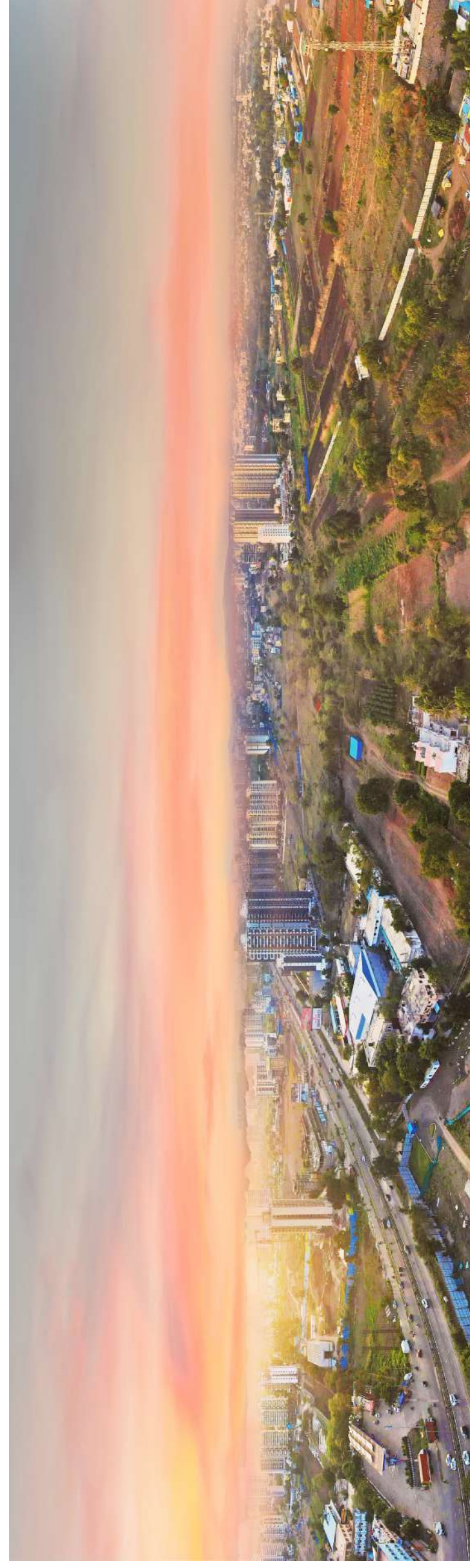
# Discover great views

**North view - day**



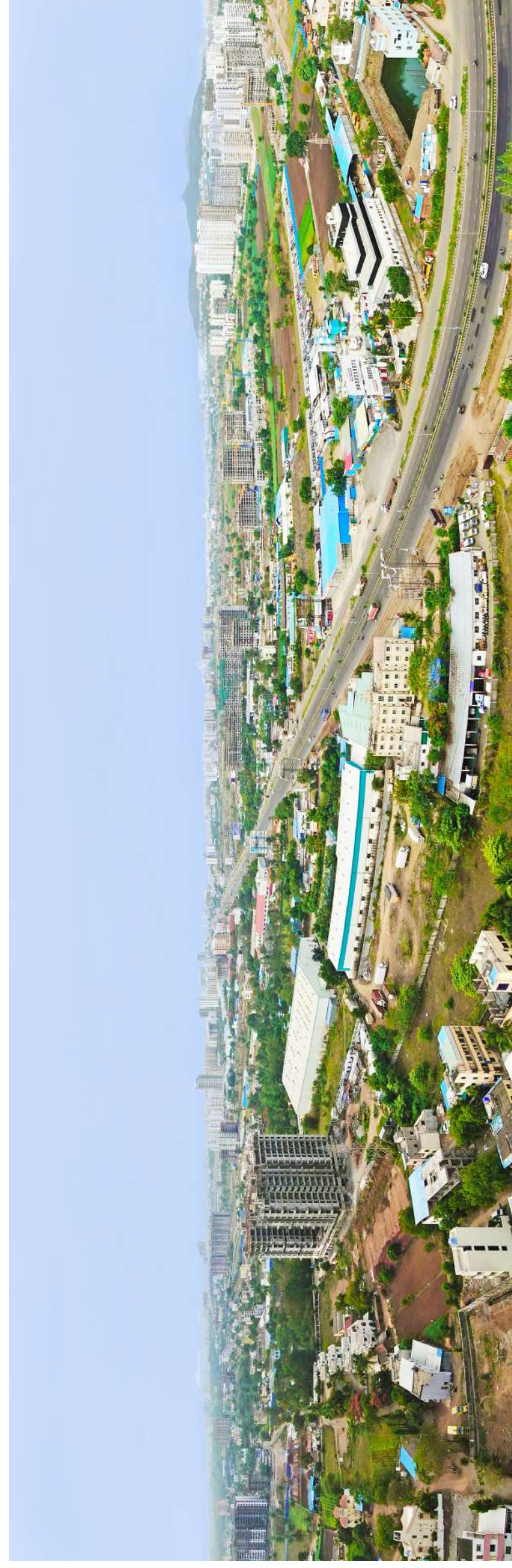
Actual image

**North view - evening**



Actual image

**South view - day**



Actual image

Actual view shot on location at the height of 70 m (equivalent to approx. 22<sup>nd</sup> floor).  
Shoot date: 28<sup>th</sup> May 2021



Artistic impression





Artistic impression



Artistic impression



Artistic impression

# Mahindra<sup>®</sup> Happinest



---

## Tathawade

The RERA number must be reflected in the top right corner of all the advt. as follows:  
MahaRERA no.: Phase 1 - P52100028049 | Phase 2 - P52100045388. For more details visit <http://maharera.mahaonline.gov.in>

Site address: Mahindra Happinest Tathawade, Besides MTU, Opposite HP Petrol Pump,  
Pune-Mumbai Highway, Jeevan Nagar, Tathawade, Pune-411033

Corporate Office:  
Mahindra Towers, 5<sup>th</sup> Floor, Dr. G. M. Bhosale Marg,  
Worli, Mumbai 400 018, India

*\*T&Cs apply. The Project Mahindra Happinest Tathawade is being developed by Mahindra Lifespace Developers Limited (“MLDL”) in a phase-wise manner. MLDL reserves the right to make changes or alterations with requisite approvals. Amenities are being developed for use across all project phases. The official website of the company is <https://www.mahindralifespaces.com>.*