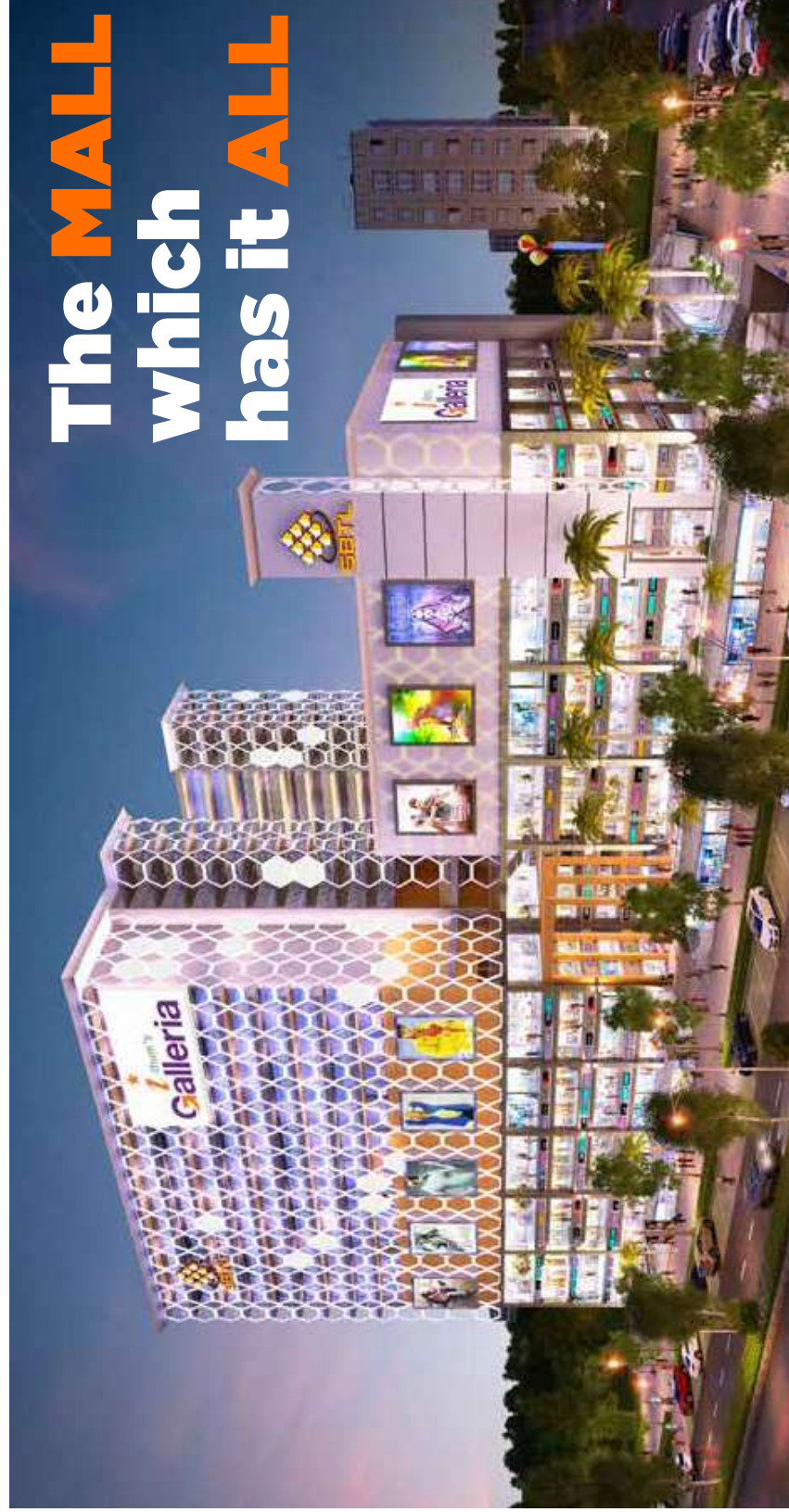
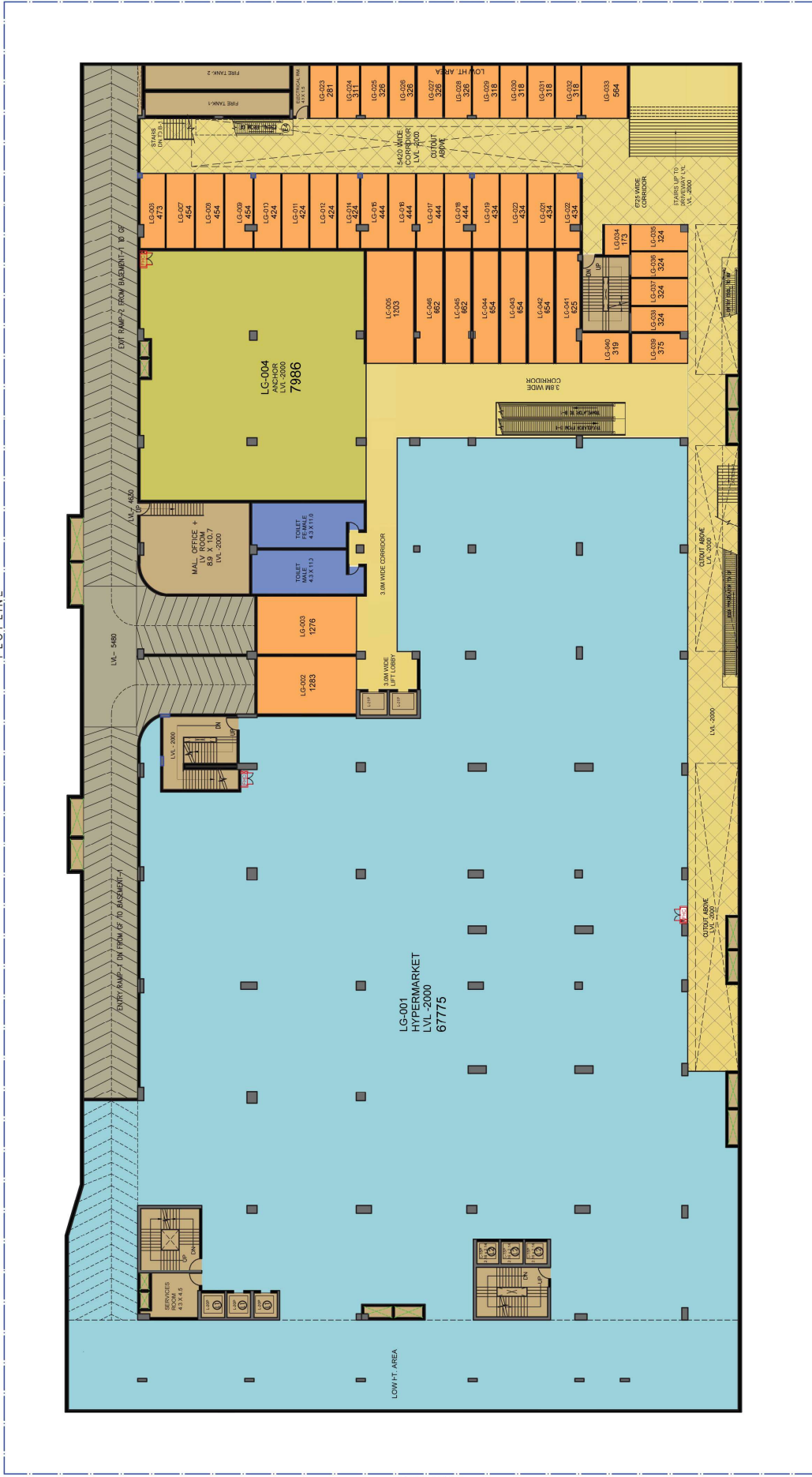


★  
-thum's  
**Galleria**

**The MALL**  
**which**  
**has it ALL**



PLOT LINE



## LOWER GROUND FLOOR PLAN

NOTE: ALL AREAS MENTIONED BELOW SHOP/ AUDI'S/ BANQUET ARE SUPER AREAS IN SQ.FT



SCALE : N.T.S



RESIDENTIAL COLONY



GROUND FLOOR PLAN

NOTE: ALL AREAS MENTIONED BELOW SHOP/AUDI/SI/ BANQUET ARE SUPER AREAS IN SQ.FT



SCALE : N.T.S

OTHER'S PROPERTY



## FIRST FLOOR PLAN

NOTE: ALL AREAS MENTIONED BELOW SHOP/AUDI/IS/ BANQUET ARE SUPER AREAS IN SQ.FT



SCALE : N.T.S



## SECOND FLOOR PLAN



SCALE : N.T.S

NOTE: ALL AREAS MENTIONED BELOW SHOP/AUDI'S/ BANQUET ARE SUPER AREAS IN SQ.FT

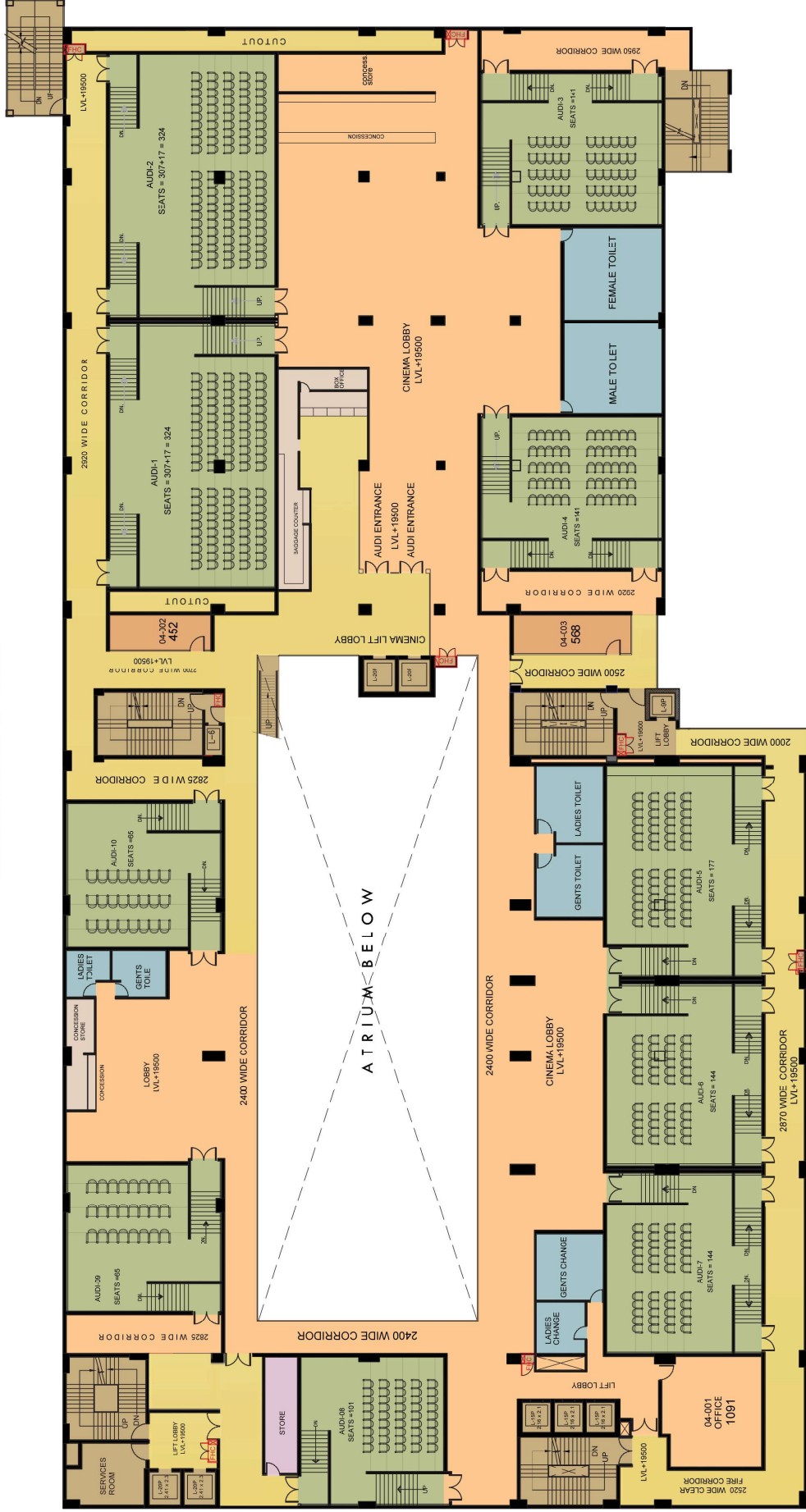


### THIRD FLOOR PLAN



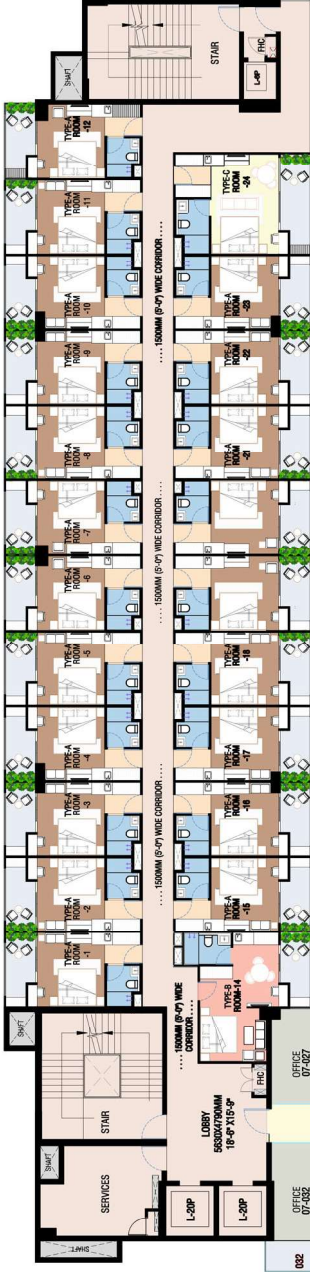
SCALE : N.T.S

NOTE ALL AREAS MENTIONED BELOW SHOP/ AUDI/S/ BANQUET ARE SUPER AREAS IN SQ.FT



**FOURTH FLOOR PLAN - CINEMA LOBBY LVL.**

NOTE: ALL AREAS MENTIONED BELOW SHOP/ AUDI'S/ BANQUET ARE SUPER AREAS IN SQ.FT



LEGEND	TYPE - A	TYPE - B	TYPE - C	OFFICES
	STUDIO APARTMENT	STUDIO APARTMENT	STUDIO APARTMENT	OFFICES

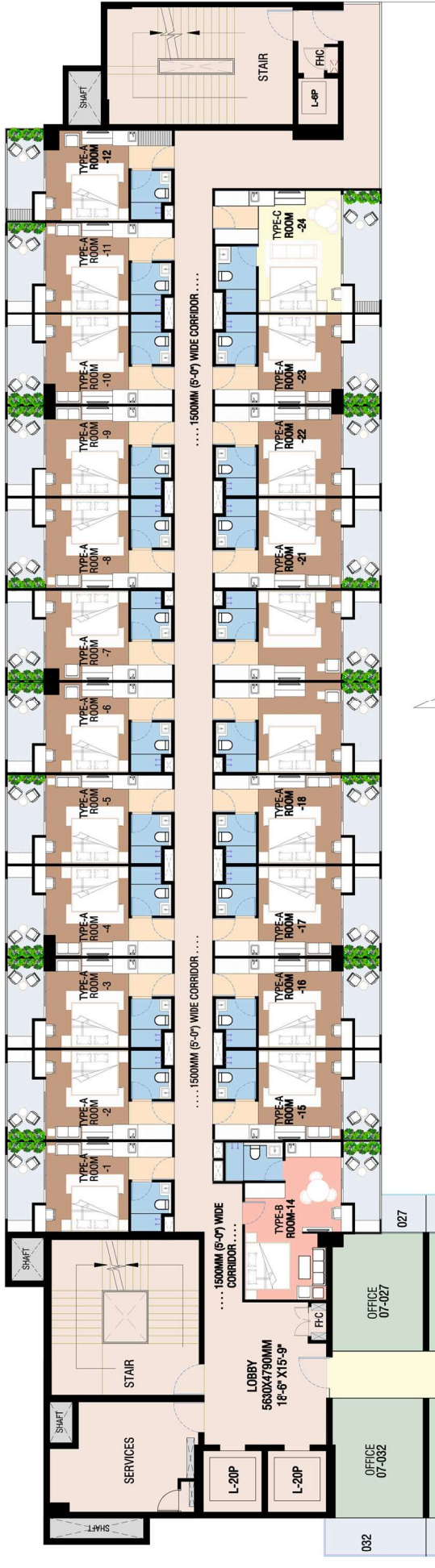


**TYPICAL FLOOR LAYOUT - OFFICES AND STUDIO APARTMENT**  
 TOTAL NO. OF FLOORS - 7 FLOORS INCLUDING -8th, 9th, 10th, 11th, 12th, 13th & 14th FLOOR.





RESIDENTIAL COLONY



**LEGEND**

<span style="display:inline-block; width:15px; height:10px; background-color: #8B4513; border: 1px solid black;"></span>	<b>TYPE - A</b> STUDIO APARTMENT
<span style="display:inline-block; width:15px; height:10px; background-color: #FF6347; border: 1px solid black;"></span>	<b>TYPE - B</b> STUDIO APARTMENT
<span style="display:inline-block; width:15px; height:10px; background-color: #FFD700; border: 1px solid black;"></span>	<b>TYPE - C</b> STUDIO APARTMENT
<span style="display:inline-block; width:15px; height:10px; background-color: #90EE90; border: 1px solid black;"></span>	<b>OFFICES</b>

ATRIUM

**TYPICAL FLOOR LAYOUT STUDIO APARTMENT**

TOTAL NO. OF FLOORS - 7 FLOORS INCLUDING -8th, 9th, 10th, 11th, 12th, 13th & 14th FLOOR.

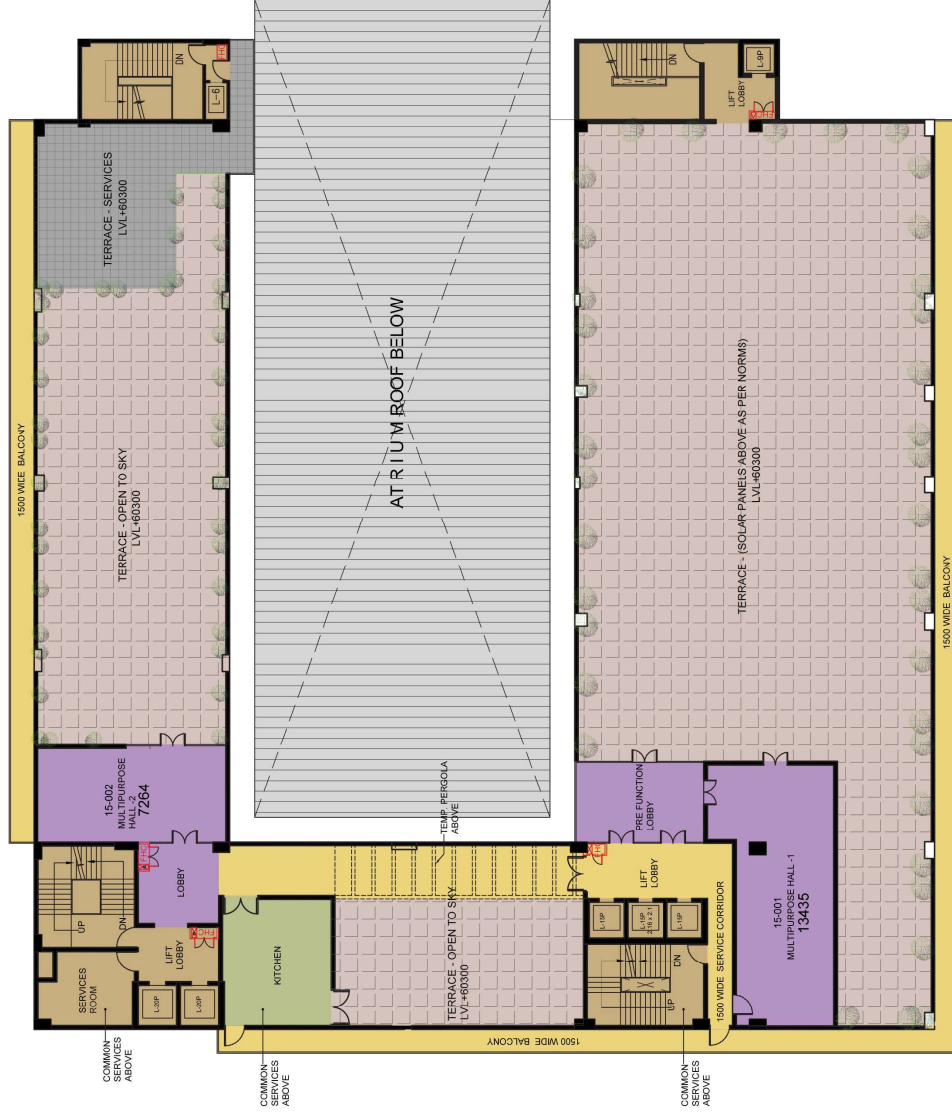


## TYPICAL OFFICE FLOOR

NOTE: ALL AREAS MENTIONED BELOW SHOP/ AUDI S/ BANQUET ARE SUPER AREAS IN SQ.FT



SCALE : N.T.S



## FIFTEENTH FLOOR - MULTIPURPOSE AREA

NOTE: ALL AREAS MENTIONED BELOW SHOP/ AUDI'S/ BANQUET ARE SUPER AREAS IN SQ.FT

## I-thum's Galleria - Greater Noida - Office

### PRICE LIST

1	Basic Sale Price With Assured Return	6000	Per Sq. ft.
2	Basic Sale Price With CLP	5150	Per Sq. ft.
<b>Additional Charges</b>			
	Metro Facing PLC	300	Per Sq. ft. on Super Area
	Road Facing PLC	150	Per Sq. ft. on Super Area
	EEC/FFC	100	Per Sq. ft. on Super Area
	IFMS	100	Per Sq. ft. on Super Area
	Lease Rent	125	Per Sq. ft. on Super Area
	Power Back-up	25,000	Per KVA

### PAYMENT PLANS

<b>Down Payment Plan(10: 85:5)</b>		Assured return - 12% PA	
1	On booking	10% of BSP	
2	Within 45 Days of Booking	85% of BSP	
3	On offer of Possession	5% of BSP	PLC+ Additional Charges
<b>Flexi Payment Plan : 1 (10:40:25:20:5)</b>		Assured return - 9% PA	
1	On booking	10% of BSP	
2	Within 45 Days of Booking	40% of BSP	
3	On Casting of 6th Floor Slab	25% of BSP	
4	On Completion of Structure	20% of BSP	
5	On Possession	5% of BSP	PLC+ Additional Charges
<b>TLP Payment Plan (40:30:20:10)</b>			
1	On booking	10%	of BSP
2	Within 45 Days of Booking	30%	of BSP
3	Within 9 month	30%	of BSP
4	Within 18 month	20%	of BSP
5	On Possession	10%	of BSP + PLC+ Additional Charges
<b>Construction Linked Payment Plan</b>			
1	On booking	10% of BSP	
2	Within 45 days of booking	10% of BSP	
3	On Start of Excavation	10% of BSP	
4	On Casting of Lower Basement Slab	10% of BSP	
5	On Casting of 3rd Floor Roof Slab	10% of BSP	
6	On Casting of 6th Floor Roof Slab	10% of BSP	
7	On Casting of 9th Floor Roof Slab	10% of BSP	
8	On Casting of 12th Floor Roof Slab	10% of BSP	
9	On Completion of Facade	10% of BSP	
10	On Offer of Possession	10% of BSP	PLC+ Additional Charges
<b>NOTE</b>			
1	Prices are subject to revision at company's discretion.		
2	All the payments to be made through Cheque/DD in favour of "Adihm Developers Private Limited RST Galleria Collection Account"		
3	All the additional charges to be paid on offer of possession		
4	HVAC charges to be charged extra, if applicable.		
5	Govt. Taxes as applicable		
6	RERA Registration Number : UPRERAPRJ15652		

## I-thum's Galleria - Greater Noida - Retail

### PRICE LIST

	Basic Sale Price (BSP)	Facing	Rs. Per Sq. ft.
			<b>CLP Plan</b>
<b>1</b>	<b>Lower Ground Floor</b>	Road	17700
		Inner	15100
<b>2</b>	<b>Ground Floor</b>	Ground	17700
<b>3</b>	<b>First Floor</b>	Road	11700
		Atrium	10800
		Inner	10000
<b>4</b>	<b>Second Floor</b>	Road	10600
		Atrium	9840
		Inner	9100
<b>5</b>	<b>Third Floor</b>	Road	9700
		Atrium	9000
		Inner	8290

### Additional Charges

	EEC/FFC	100	Per Sq. ft. on Super Area
	IFMS	100	Per Sq. ft. on Super Area
	Lease Rent	125	Per Sq. ft. on Super Area
	Power Back-Up	25,000	Per KVA
	Corner PLC (Road Facing)	15%	Per Sq. ft. of BSP
	Corner PLC (Atrium & Inner Facing)	10%	Per Sq. ft. of BSP

### PAYMENT PLANS

<b>Down Payment Plan ( 95:5)</b>		Assured return - 12% PA	
1	On booking	10%	of BSP
2	Within 45 Days of Booking	85%	of BSP
3	On offer of Possession	5%	of BSP + PLC+ Extra Charges

<b>Flexi Payment Plan : 1 (10:40:25:20:5)</b>		Assured return - 9% PA	
1	On booking	10% of BSP	
2	Within 45 Days of Booking	40% of BSP	
3	On Casting of 6th Floor Slab	25% of BSP	
4	On Completion of Structure	20% of BSP	
5	On Possession	5% of BSP	PLC+ Additional Charges

<b>TLP Payment Plan (40:30:20:10)</b>			
1	On booking	10%	of BSP
2	Within 45 Days of Booking	30%	of BSP
3	Within 9 month	30%	of BSP
4	Within 18 month	20%	of BSP
5	On Possession	10%	of BSP + PLC+ Additional Charges

<b>Construction Linked Payment Plan</b>			
1	On booking	10%	of BSP
2	Within 45 days of booking	10%	of BSP
3	On Start of Excavation	10%	of BSP
4	On Casting of Lower Basement Slab	10%	of BSP
5	On Casting of Lower Ground Floor Roof Slab	10%	of BSP
6	On Casting of 1st Floor Roof Slab	10%	of BSP
7	On Casting of 3rd Floor Roof Slab	10%	of BSP
8	On Casting of 6th Floor Roof Slab	10%	of BSP
9	On Completion of Facade	10%	of BSP
10	On Offer of Possession	10%	of BSP + PLC + Additional Charges

### NOTE

1	Prices are subject to revision at company's discretion.
2	All the payments to be made through Cheque/DD in favour of "Adihm Developers Private Limited RST Galleria Collection Account"
3	All the additional charges to be paid on offer of possession
4	HVAC charges to be charged extra, if applicable.
5	Govt. Taxes as applicable
6	RERA Registration Number : UPRERAPRJ15652

## I-thum's Galleria - Greater Noida - Work @ Galleria

### PRICE LIST

	Basic Sale Price (BSP)	Rs. Per Sq. ft.	
	CLP	5,690	
<b>Additional Charges</b>			
	EEC/FFC	100	free
	Ac charge	100	free
	IFMS	100	free
	Lease Rent	125	free
	Power Back-up	25,000	free
	PLC ( Inner 50/- , Road/Green Facing 100/- )		

### PAYMENT PLANS

#### Down Payment Plan(10: 85:5)

1	On booking	10% of BSP	
2	Within 45 Days of Booking	85% of BSP	
3	On offer of Possession	5% of BSP	PLC

#### Flexi Payment Plan : 1 (10:40:25:20:5)

1	On booking	10% of BSP	
2	Within 45 Days of Booking	40% of BSP	
3	On Casting of 6th Floor Slab	25% of BSP	
4	On Completion of Structure	20% of BSP	
5	On Possession	5% of BSP	PLC

#### TLP Payment Plan (20:20:20:20:20)

1	On booking	20%	of BSP
2	Within 90 Days of Booking	20%	of BSP
3	Within 12 month	20%	of BSP
4	Within 18 month	20%	of BSP
5	On Possession	20%	of BSP +PLC

#### NOTE

1	Prices are subject to revision at company's discretion.
2	All the payments to be made through Cheque/DD in favour of " <b>Adihm Developers Private Limited RST Galleria Collection Account</b> "
3	All the additional charges to be paid on offer of possession
4	HVAC charges to be charged extra, if applicable.
5	Govt. Taxes as applicable
6	RERA Registration Number : UPRERAPRJ15652

## I-thum's Galleria - Greater Noida - Food Court

### PRICE LIST

	Basic Sale Price (BSP)	Rs. Per Sq. ft.	
	<b>Food Court</b>	<b>11,100</b>	
<b>Additional Charges</b>			
	EEC/FFC	100	Per Sq. ft. on Super Area
	IFMS	100	Per Sq. ft. on Super Area
	Lease Rent	125	Per Sq. ft. on Super Area
	power backup	25000	per kva

### PAYMENT PLANS

<b>Down Payment Plan( 95:5)</b>		Assured return - 12% PA	
1	On booking	10%	of BSP
2	Within 45 Days of Booking	85%	of BSP
3	On offer of Possession	5%	of BSP + Additional Charges
<b>Flexi Payment Plan (50:25:25)</b>		Assured return - 9% PA	
1	On booking	10%	of BSP
2	Within 45 Days of Booking	40%	of BSP
3	On Completion of Structure	25%	of BSP
4	On Completion of Facade	20%	of BSP
5	On Possession	5%	of BSP + Additional Charges

### NOTE

1	Prices are subject to revision at company's discretion.
2	All the payments to be made through Cheque/DD in favour of " <b>Adihm Developers Private Limited RST Galleria Collection Account</b> "
3	All the additional charges to be paid on offer of possession
4	HVAC charges to be charged extra, if applicable.
5	Govt. Taxes as applicable
6	RERA Registration Number : UPRERAPRJ15652