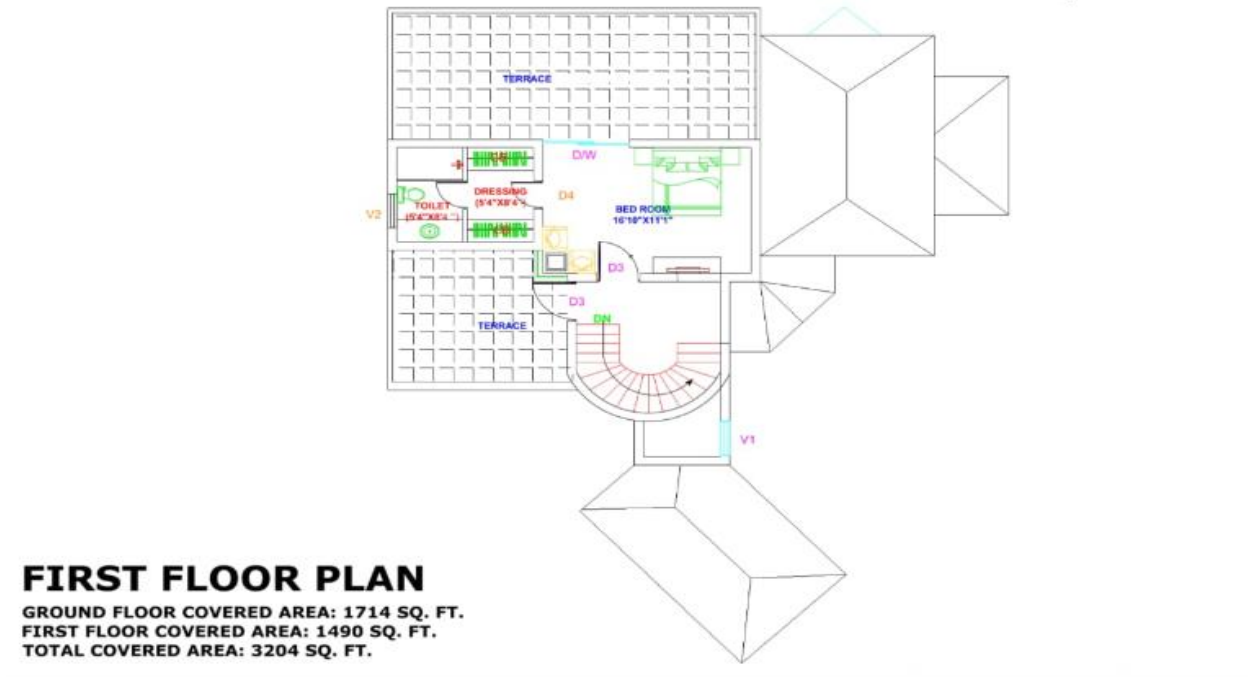
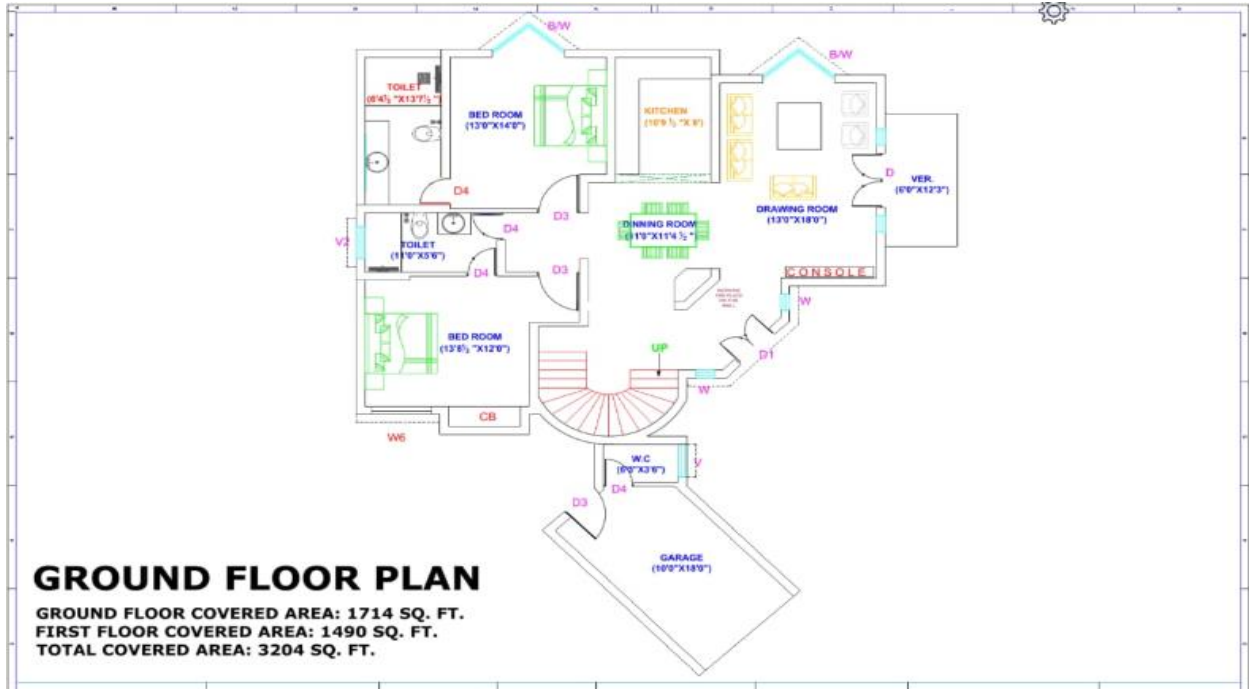


**Specifications and Price**

**Cottage No. 103**

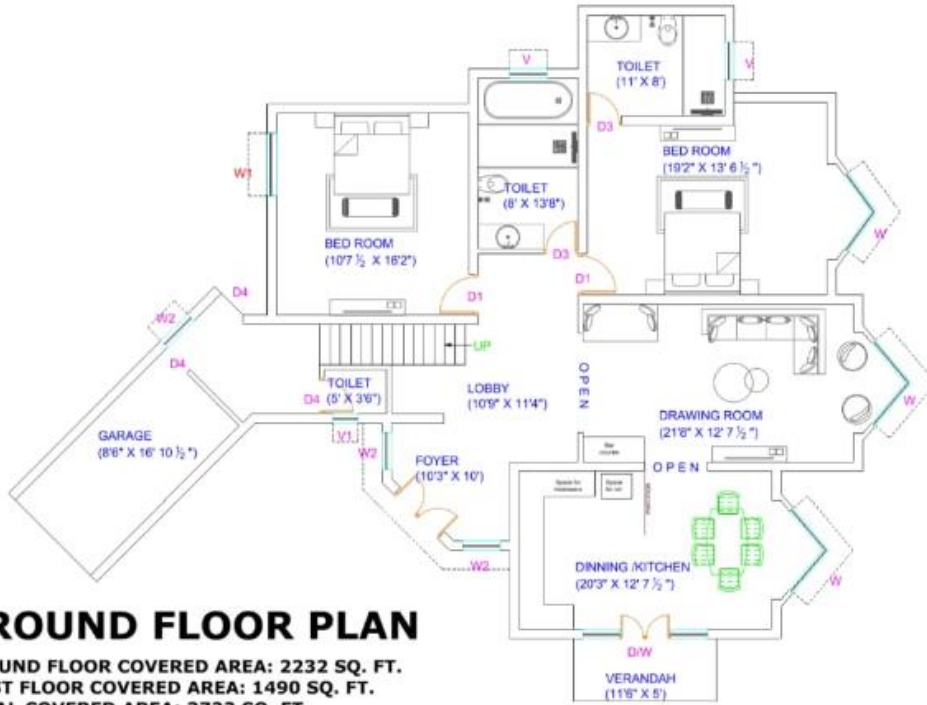
**Naturoville– Plot area - 876 Sq yards (Covered area 3204 Sq. Ft. – 3 BHK) priced at INR 1.85 Cr.**



## Specifications and Price

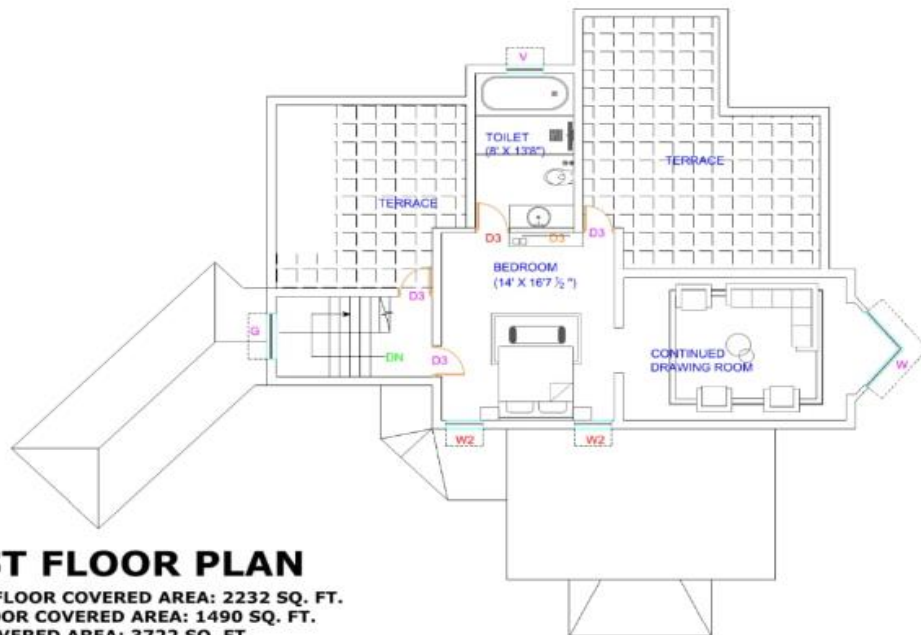
### Cottage number 145

Naturoville – Plot area -1083 Sq yards (Covered area 3722 Sq. Ft. – 3 BHK) priced at INR 2.10 Cr.



### GROUND FLOOR PLAN

GROUND FLOOR COVERED AREA: 2232 SQ. FT.  
FIRST FLOOR COVERED AREA: 1490 SQ. FT.  
TOTAL COVERED AREA: 3722 SQ. FT.



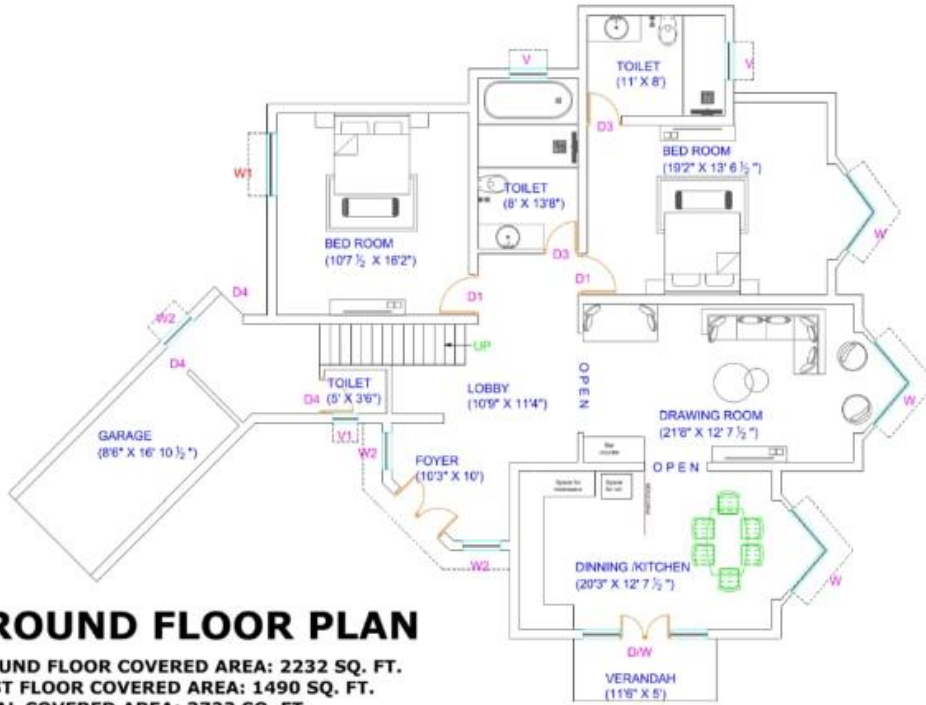
### FIRST FLOOR PLAN

GROUND FLOOR COVERED AREA: 2232 SQ. FT.  
FIRST FLOOR COVERED AREA: 1490 SQ. FT.  
TOTAL COVERED AREA: 3722 SQ. FT.

## Specifications and Price

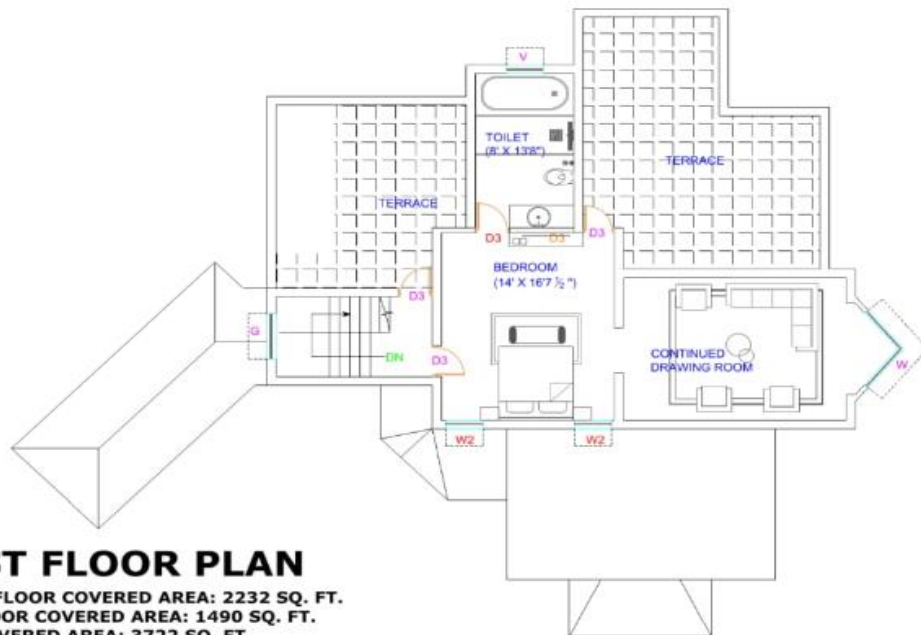
### Cottage number 129

**Naturoville– Plot area - 1380 Sq yards (Covered area 3722 Sq. Ft. – 3 BHK) priced at INR 2.40 Cr.**



### GROUND FLOOR PLAN

GROUND FLOOR COVERED AREA: 2232 SQ. FT.  
FIRST FLOOR COVERED AREA: 1490 SQ. FT.  
TOTAL COVERED AREA: 3722 SQ. FT.



### FIRST FLOOR PLAN

GROUND FLOOR COVERED AREA: 2232 SQ. FT.  
FIRST FLOOR COVERED AREA: 1490 SQ. FT.  
TOTAL COVERED AREA: 3722 SQ. FT.

### **COTTAGE 103- SPECIFICATIONS**

Windows	UPFC- Encraft
Flooring	Kajaria Tiles
False Ceiling	Pine Wood/ Wooden Battens
Switch Boards	Noris
Roofs	Shingles
Bathroom fittings	Kohler
Kitchen	Action-tesa UV Board

### **COTTAGE 145- SPECIFICATIONS**

Windows	Wooden
Flooring	Kajaria Tiles
Switch Boards	Vihan
Roofs	Shingles
Kitchen	Action-tesa UV Board
Wiring	Polycab
Bathroom fittings	Kohler

### **COTTAGE 129- SPECIFICATIONS**

Windows	Wooden
Flooring	Kajaria Tiles
Switch Boards	Anchor Penta
Roofs	Shingles
Bathroom fittings	Kohler
Kitchen	Action-tesa UV Board
Wiring	Polycab
False Ceiling	POP

**\*The Stamp Duty charges, Registration charges, Miscellaneous charges and 1 year advance CAM charges will be applicable additionally at the time of handover of the unit/s.**

