



**DMD PACCIFIC**  
Canal Road, Opp. L. P. Savani School, Vesu, Surat.  
M: +91 6355 051200, +91 7405 274569



**PACCIFIC**  
4 BHK Luxurious Home  
& Commercial Spaces



## Possibilities Galore

At DMD, possibilities galore and our philosophy revolves around this. Each opportunity is a new possibility here. Practical approach, meticulous planning, new age designing, innovative standards and technical brilliance remain key features that reflects in any of our projects. It's unsurpassed quality and enduring strength makes DMD outstanding in the construction industry. In addition to this, a perfect blend of quality and ethics make DMD a wise choice for the discerning.

DMD is one amongst the few privileged real estate companies in Gujarat that owe an in-house construction team led by experts. With more than 50% of the workforce being engineers and with an average age of 33 years, the group boasts of a young and technically strong team.

With commendable different categories of construction to its credit over a decade DMD has emerged as a group to reckon with IN REALTY.



Artistic Impression



Artistic Impression



**COMMERCIAL SPACES**

Starting from  
**300 sq.ft. to 3000 sq.ft.**



Artistic Impression



Artistic Impression

# Commercial Specifications

**STRUCTURE**  
Earthquake resistant R.C.C. frame structure

**WATER SUPPLY**  
S.M.C. Water supply for whole premise

**ELECTRIFICATION**  
Exclusive modular switches in all shops.  
Provision for cable, telephone, T.V., internet and A.C. points at individual shops as per consultant specification - FRLSH wire of RR cables

**TERMITE TREATMENT**  
Anti-termite treatment by specialized agency

**FIRE SAFETY**  
Fire extinguisher, fire hydrant, smoke detector in shops & passage and wet riser as per NBC

**POWER BACKUP FACILITY**  
Generator backup for 2 tube lights and 2 ceiling fans, power backup for passage area, lift and surrounding of building

**PARKING**  
Well planned visitor parking at both sides of the road on ground floor

**LANDSCAPE**  
Beautifully designed landscape area at ground floor

**SECURITY**  
24X7 whole campus under CCTV camera surveillance

# Internal unit finishes

**DOOR**  
Glass doors with lock and handle and glass partition

**FLOORING**  
Vitrified tiles of 32"x32" in all office & shops.  
Every passage with granite stone, granite cladding on lift facia wall

**COMMON TILES**  
Toilets floor and dedo finished with 2'x4' vetrified tiles of JHONSON make

**WALL FINISH**  
White putty on all internal walls

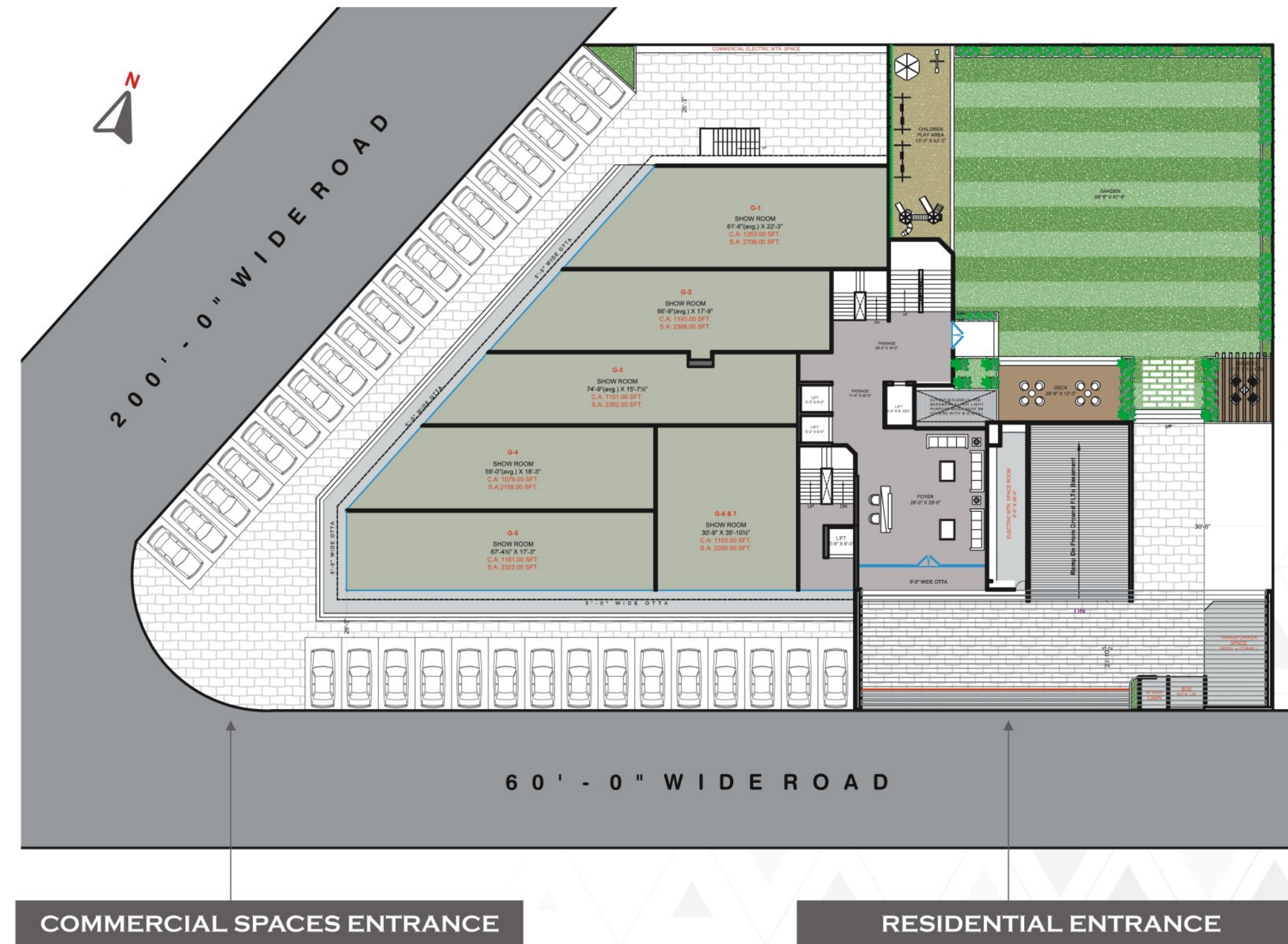
# Internal common area finishes

**STAIRCASE**  
Stair steps and landing finished in granite stone

**CEILING**  
Cement sheet at foyer and passage area

**ELEVATORS**  
Dedicated 2 passenger lifts & 1 good's lift of JOHNSON make

# GROUND FLOOR PLAN



# FIRST FLOOR PLAN



# SECOND FLOOR PLAN



**FINE LIVING AT ITS BEST**

Because you mean comfort and luxury in living more than a residence; we offer DMD Paccific. A residence built on our strength and your trust. With dramatic sky and scenery, residency is sure to transform your life.



Artistic Impression



Artistic Impression

# Residential Specifications

- 
**COMPOUND WALL & ENTRANCE**
  - Compound walls per architectural design
  - Attractive entrance gate as well as security cabin
  - Parking and internal roads
- 
**PARKING & INTERNAL ROADS**
  - 1st & 2nd basement for parking
  - 2 parking allotted per flat
  - Speed breaker and safety signage
- 
**SECURITY SYSTEM**
  - 24 x 7 Security within the campus
  - Intercom facilities
  - CCTV camera in ground floor, reception, lifts & basements
- 
**LAWN AREA**
  - Beautiful landscape garden with jogging track, senior citizen walking track, children play area, gazebo
- 
**ELEVATORS**
  - Dedicated 2 passenger lifts & 1 good's lift of JOHNSON make
- 
**STRUCTURE**
  - Structural design for seismic conditions as per regulations & cods
- 
**FIRE FIGHTING**
  - Fire fighting system as per regulation of urban local body
- 
**INTERNAL WALL FINISHES**
  - Plaster with wall putty

- 
**ELECTRIFICATION / LOW VOLTAGE SYSTEM**
  - Distribution board with "MCB" & "RCCB" to ensure maximum safety
  - Society intercom facility
  - FRLSH cables of RR cables
  - Modular switches of LEGRAND brand
  - Appropriated earthing & lightning protection
- 
**INTERNAL COMMON AREA FINISHES**
  - Stair steps and landing in granite stone flooring
  - Passage finished with vitrified tiles of 2' x 4'
  - Granite cladding on lift facia wall or frame
- 
**DOORS & RAILING**
  - Main door & Wash door to be provided with laminated flush door and handle by ENOX make
  - All balcony glass railing with aluminum top
  - Staircase railing is finishes with SS and glass
- 
**BATHROOMS SANITARY FITTINGS - C.P. FITTINGS**
  - Wall hung closet with seat cover in attached toilet by VARMORA make
  - Bath fittings by ISENBERG make
- 
**WINDOWS**
  - Aluminum powder coated with SAINT GOBAIN ST 167 reflective glass of high quality
- 
**POWER**
  - DG BACKUP for elevators, Water pumps & Lighting in common area
  - 2 Lights & 2 Fan points for each flat
- 
**WATER SUPPLY**
  - Under ground water tank
  - Concealed lines will CPVC Pipe by BIRLA make
- 
**FLOORING & DADO TILES**
  - Living, kitchen, dinning & passage area finished with Italian
  - One bedroom to be provided with wooden flooring & other bedrooms with vitrified tiles of 4' x 4' of AGL make
  - All bathroom finished with Vitrified tiles of 2' x 4'
  - All Balcony floor finished by Wooden Ceramic flooring of AGL make

# THIRD FLOOR PLAN WITH AMENITIES PLAN



SKY LOUNGE

INDOOR PLAY AREA

TODDLER'S AREA

HOME THEATRE

SPA

JACUZZI

CONFERENCE ROOM

GYM

PLAN FOR PRESENTATION PURPOSE ONLY.

# RESIDENTIAL FLOOR PLAN



5'-6 1/2" WIDE DECK

4'-6 1/2" WIDE DECK

2'-0" WIDE STANDING BALCONY

2'-0" WIDE STANDING BALCONY

# 4 BHK VARIANTS STARTING FROM

(1) 3782 SQ.FT. (2) 3820 SQ.FT. (3) 4347 SQ.FT. SKY DECK



LIVING ROOM - VIEW 1



LIVING ROOM - VIEW 2



BEDROOM WITH BALCONY



BEDROOM 2



BEDROOM 3



BEDROOM 4



ISOMETRIC VIEW  
SERIES - 401



RECEPTION FOYER



DINNING AREA



# INDOOR AMENITIES



TODDLERS PLAY AREA



HOME THEATRE



CONFERENCE/KITTY/LIBRARY ROOM



INDOOR GAME ZONE



SPA



JACUZZI



GYM

# OUTDOOR AMENITIES



**GAZEBO**



**OPEN YOGA AREA**



**OUTDOOR CHILDREN PLAY AREA**

# LOCATION MAP



## DISCLAIMER

(01) All rights are reserved by the developers. (02) Legal charges, stamp duties, registration charges, G.E.B., S.M.C., SUDA & gas connection charges etc. to be borne by the member. (03) Rights reserved by the developers to make any changes in plan, elevation and other details which will be binding to all the members. (04) Internal and external changes shall not be allowed. (05) Subject to Surat jurisdiction. (06) Any new taxes announced by the government / S.M.C. / Authority will be borne by the member / buyer during the project. (07) This information book is the property of developers. It cannot be used as a legal document or reproduce without their permission. (08) Changes in services of individual units will not be permissible. (09) Any external signages for offices shall not be permitted for all the time to come. (10) This brochure is only for private circulation for general information to the members and shall not form a part of any agreement. It can be changed without prior notice.