

The Envelope

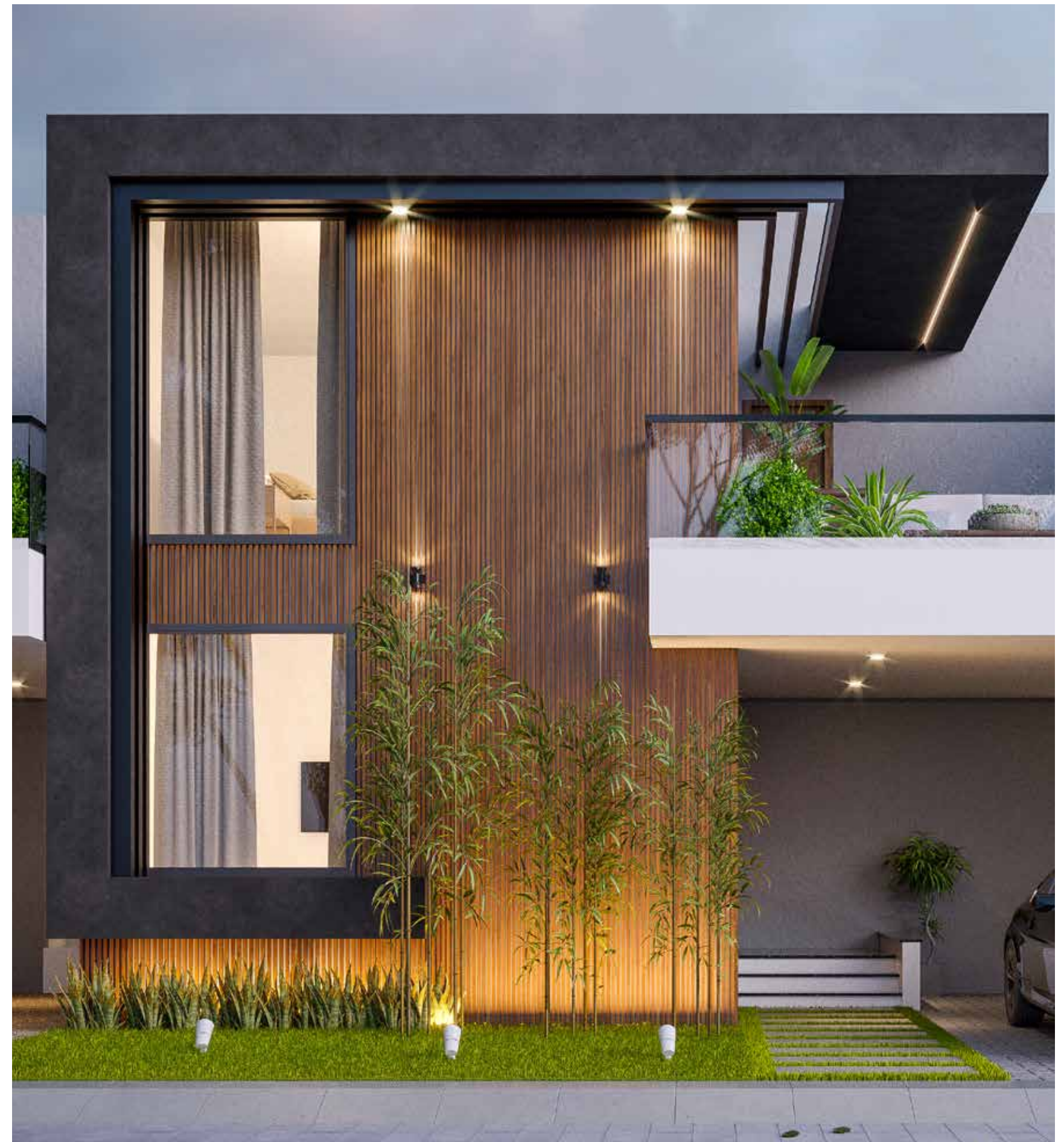
The Envelope

We know that the little things in life matter just as much as the larger ones. And at times, they may matter even more. Thus, you will find that we pride ourselves in our newest offering **The Envelope** as it incorporates specifications that have been specially designed to cater to all your aesthetic, smart-living, value-based and conscious-living needs.

You can think of The Envelope as a shiny cluster of 9 villas, each of which will help conscious living prosper. From motorized curtains to faucets which aid in saving water and more, life at Envelope will be in sync with your vision for a better planet and happier living.

HIGHER-ORDER LIVING

Homes that
grow on you



thoughtful architecture

The architecture of The Envelope is a perfect marriage of contemporary finishes and nature's green. With expansive exteriors, spacious interiors, and large windows ensuring ample ventilation - the homes are designed with a spark of elegance to let you experience a sense of grandeur at all times.

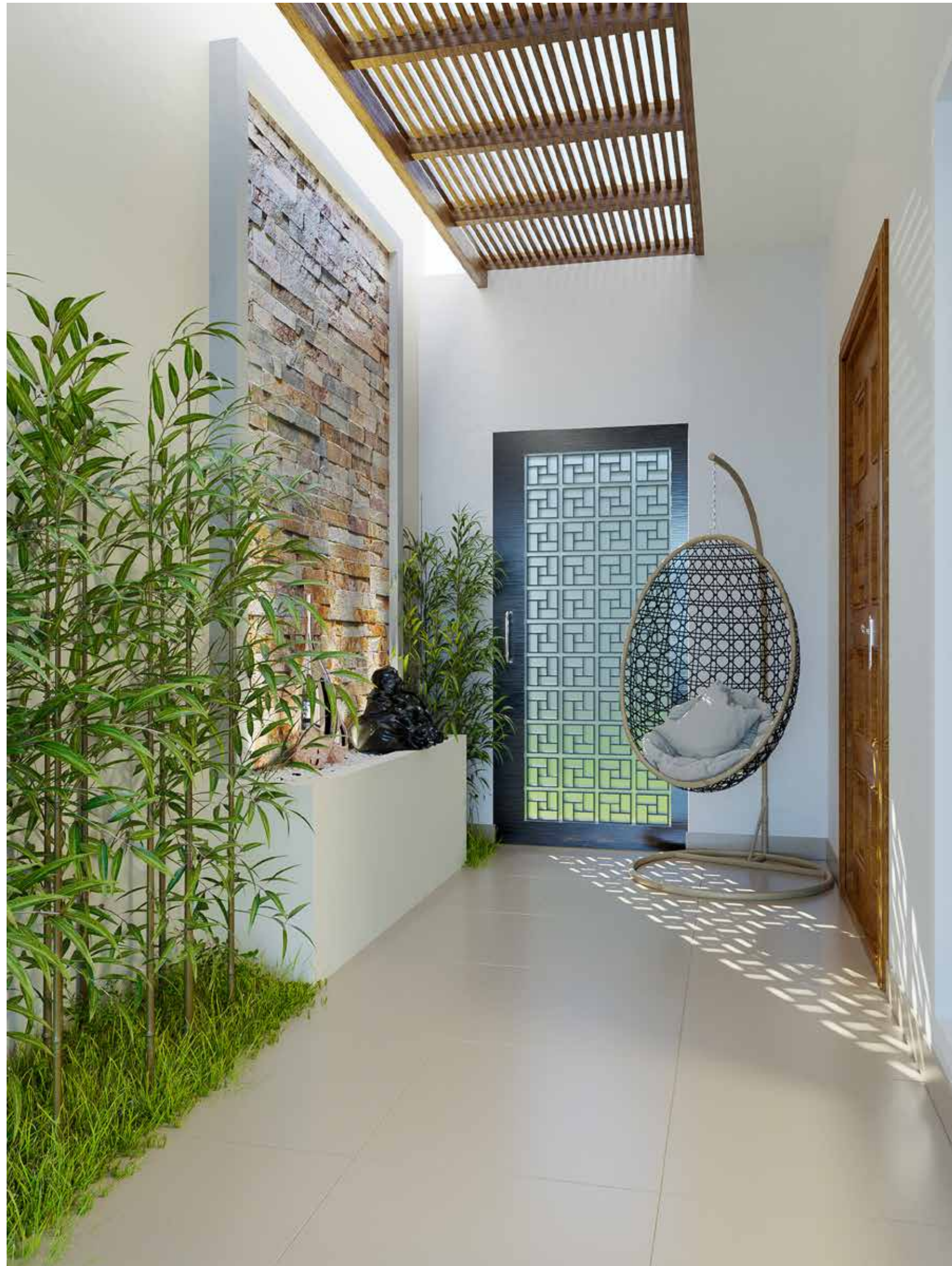
ideal for
good times

rear view

The villa's rear view is a sight to behold with its sunbathing garden and a vast arena of open space.



Rear View

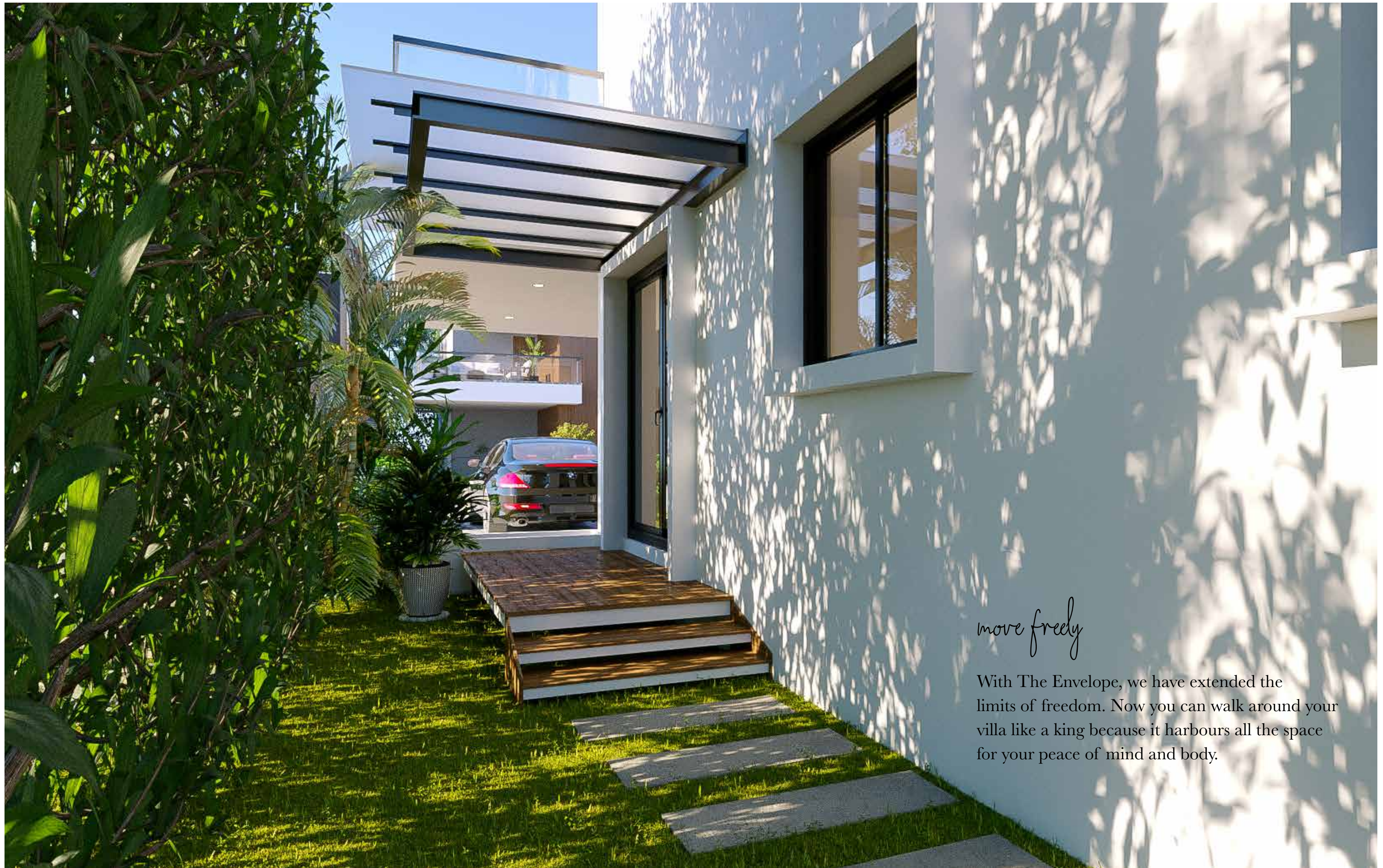


Main Entrance

Homes that say
Welcome

main entrance

Our main entrance is the place where you will leave your worries and stress behind.
Warm and welcoming its embrace will balm all tired minds.



move freely

With The Envelope, we have extended the limits of freedom. Now you can walk around your villa like a king because it harbours all the space for your peace of mind and body.



the face of ethereal beauty

It's a beauty as far as the eyes can see.
From the front, every Envelope home looks
like a place of such quietude and grace
that will inspire a moment of
silent admiration.

Villa - Front View



streets that invite a dekho

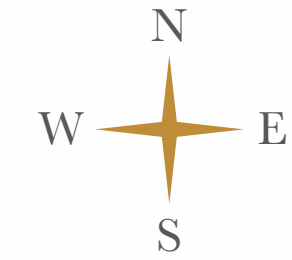
Streets that are a boulevard of boutique villas can only inspire a kind of living that expresses itself in complete and abundant fullness.



get
connected

As we aimed to perfect specifications, we made sure that our choice of location too aided us in our attempt to make life consciously engaging for you.

LOCATION MAP



closer to things that matter

Find yourself close to things that matter to you. We are only 5 minutes from the airport and close to several hospitals, colleges, shopping malls and more; thus making sure that your life is well integrated at all times.

living better

When all is well, it shows.

Our living room is the place best reserved for times when the going gets better. Its large windows, motorized curtains etc. will play a vital role in your well-being.



Living Room

be the master of your comfort

Your privacy is our personal concern.
Your bedroom, therefore, will become your
getaway and sanctuary in delightful ways.



Master Bedroom



Bathroom

Bathe in luxury

bathroom

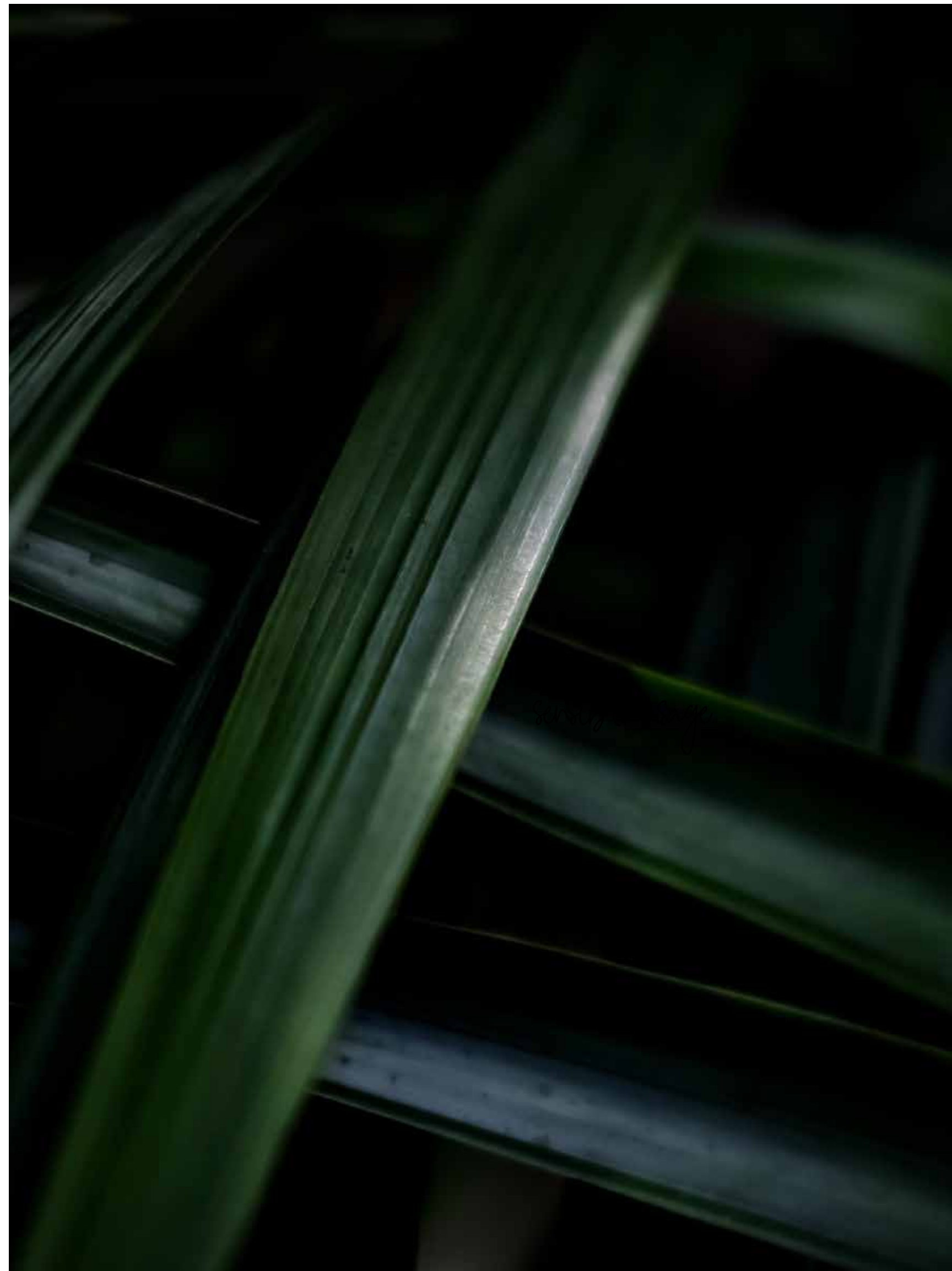
A great bathroom makes a great bath possible. And a great bath helps build superb days, delightful evenings and a good many memories. At The Envelope, bathrooms have been designed to rejuvenate every cell of your being, every time.



space that nourishes

We call it everyone's 'go-to' place. This has largely inspired our design aesthetics too. From automatic faucets to scintillating views, your kitchen will be a nook of wonder and joy.

conscious living
made possible





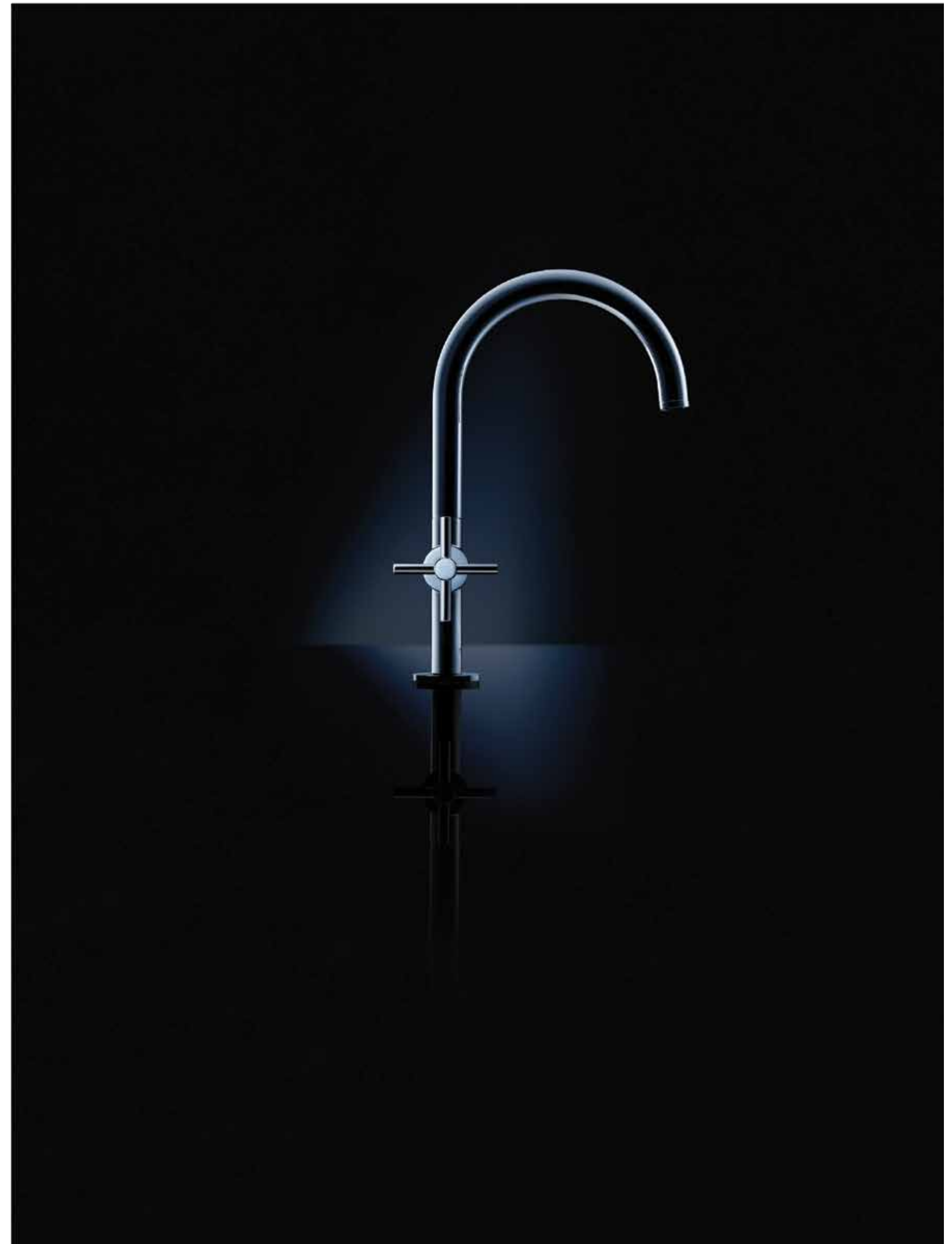
sensible usage

We are conscious consumers of life-sustaining energy. At Samridhi, we have used energy-efficient specifications.

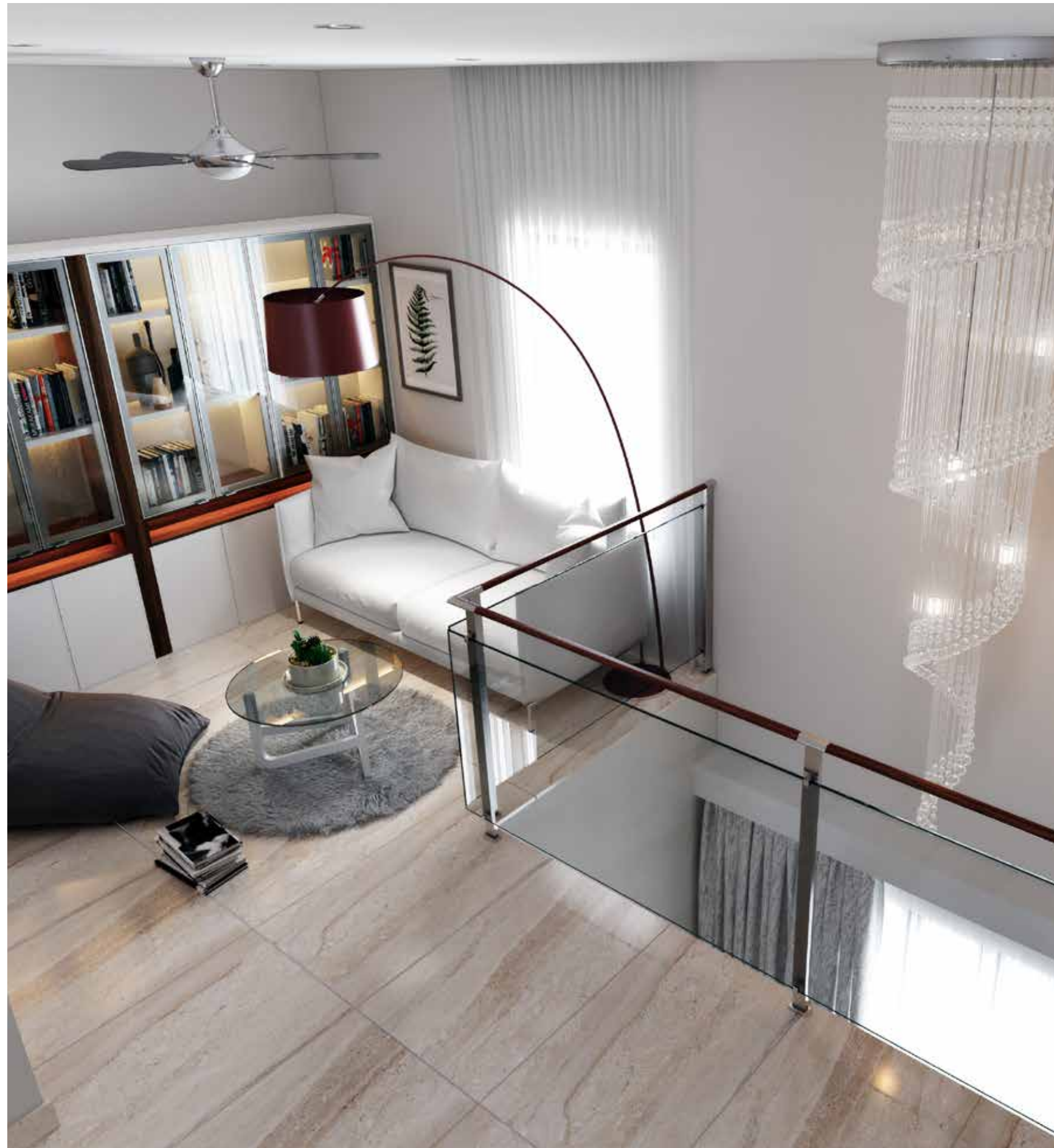
Our **solar-powered heaters** are best-in-class and will help you make the most of the sun's energy. Efficient and high-end, these heaters will help you thrive in the one-season world of warmth throughout the year.

Our **faucets** are enabled with automatic sensors and are smart enough to sense when you are done using it. When every drop matters, every measure to save it matters too.

Apart from solar heaters, automatic faucets, we have also incorporated **large windows** that will bring in ample natural light, thus reducing the use of electricity during daytime.



Automatic Faucet

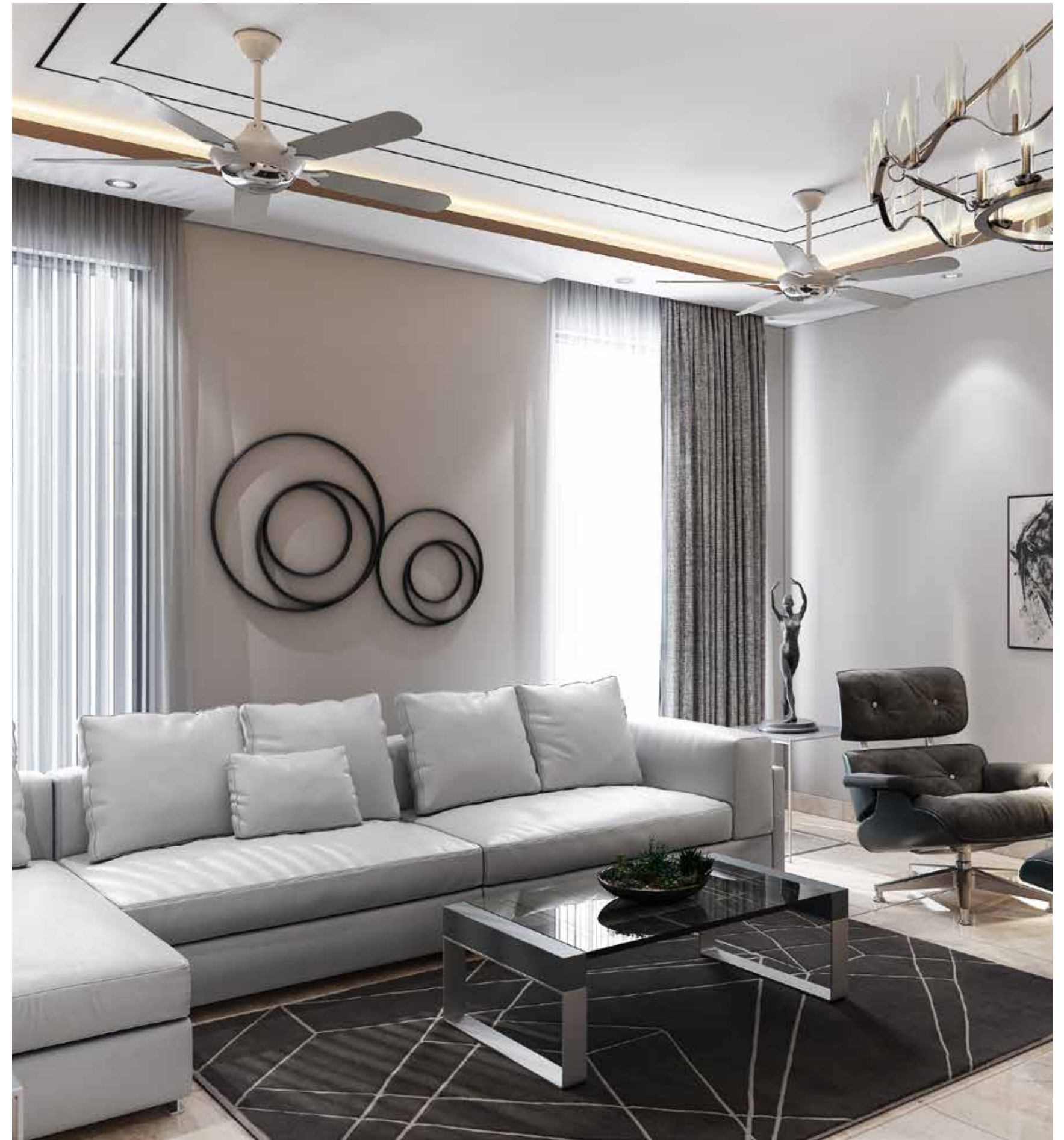


ance of
space

space management

At The Envelope, we have made sure that you are enveloped in freedom at all times. Our space management efforts will ensure privacy in an opulent living space. Enjoy our wide vistas of openness and the elusive silence which has become a rare indulgence these days.

Something
to look up to!



false ceiling

Can your ceiling inspire your day, elevate your mood and enthrall your senses? Yes. At Envelope, we have created eth real ceilings that will spark your imagination every time you look up.



natural light

Life's elemental. And to make all its elements come alive, we have installed large windows on the villa's front. Imagine yourself basking in the sun's warmth while experiencing the wind's gentle caress and you'll know you are home.

Let there
be light

Peace of mind
Secured

biometric yale locks

No compromise on quality is the cornerstone of our philosophy, so when we had to choose the brand of door security systems for the project, we chose YALE - the name deserving customers' trust. Yale's finest range of biometric lock systems has been installed to envelop you with complete peace of mind.



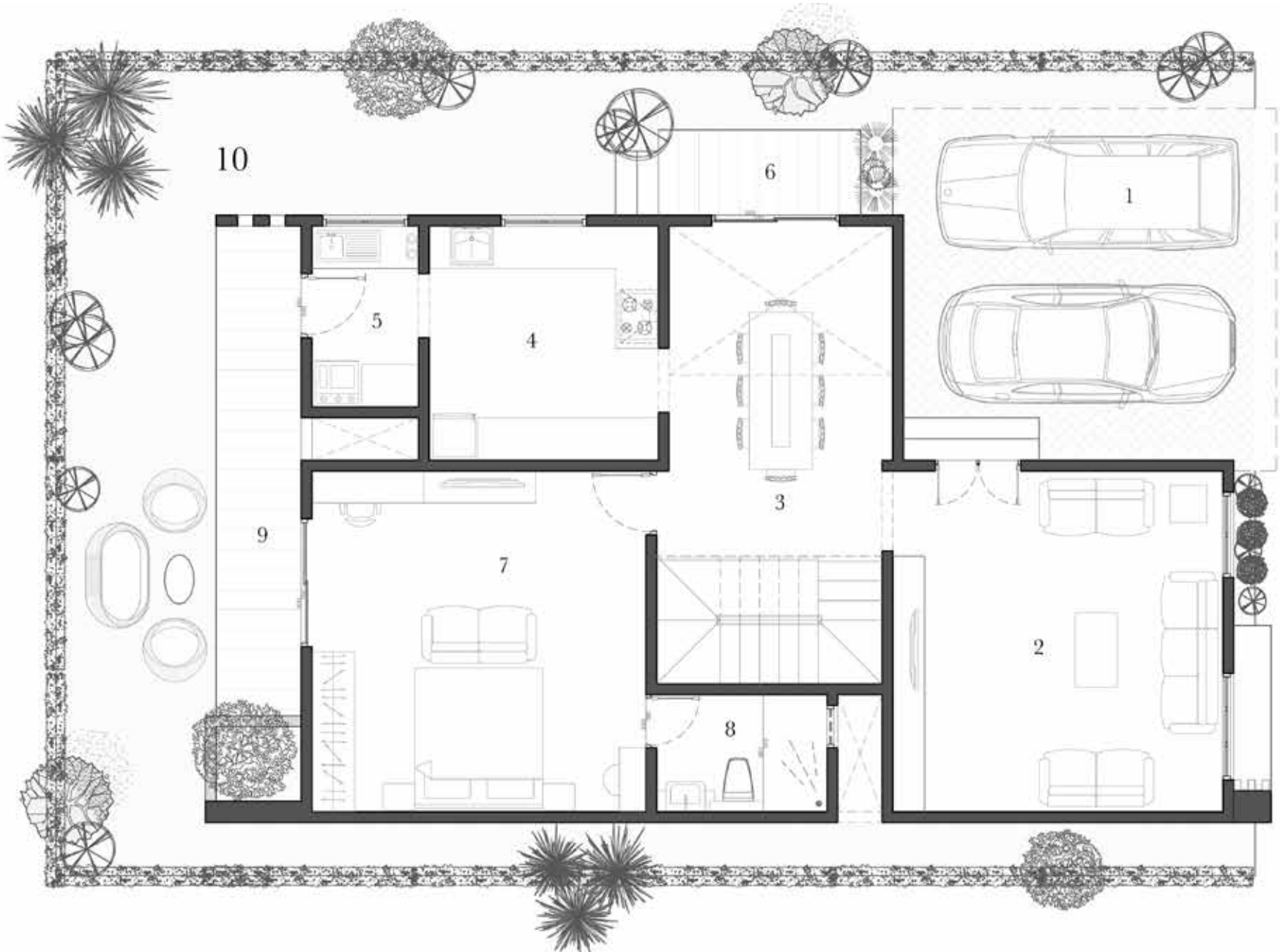


curtains at
your command

motorized curtains

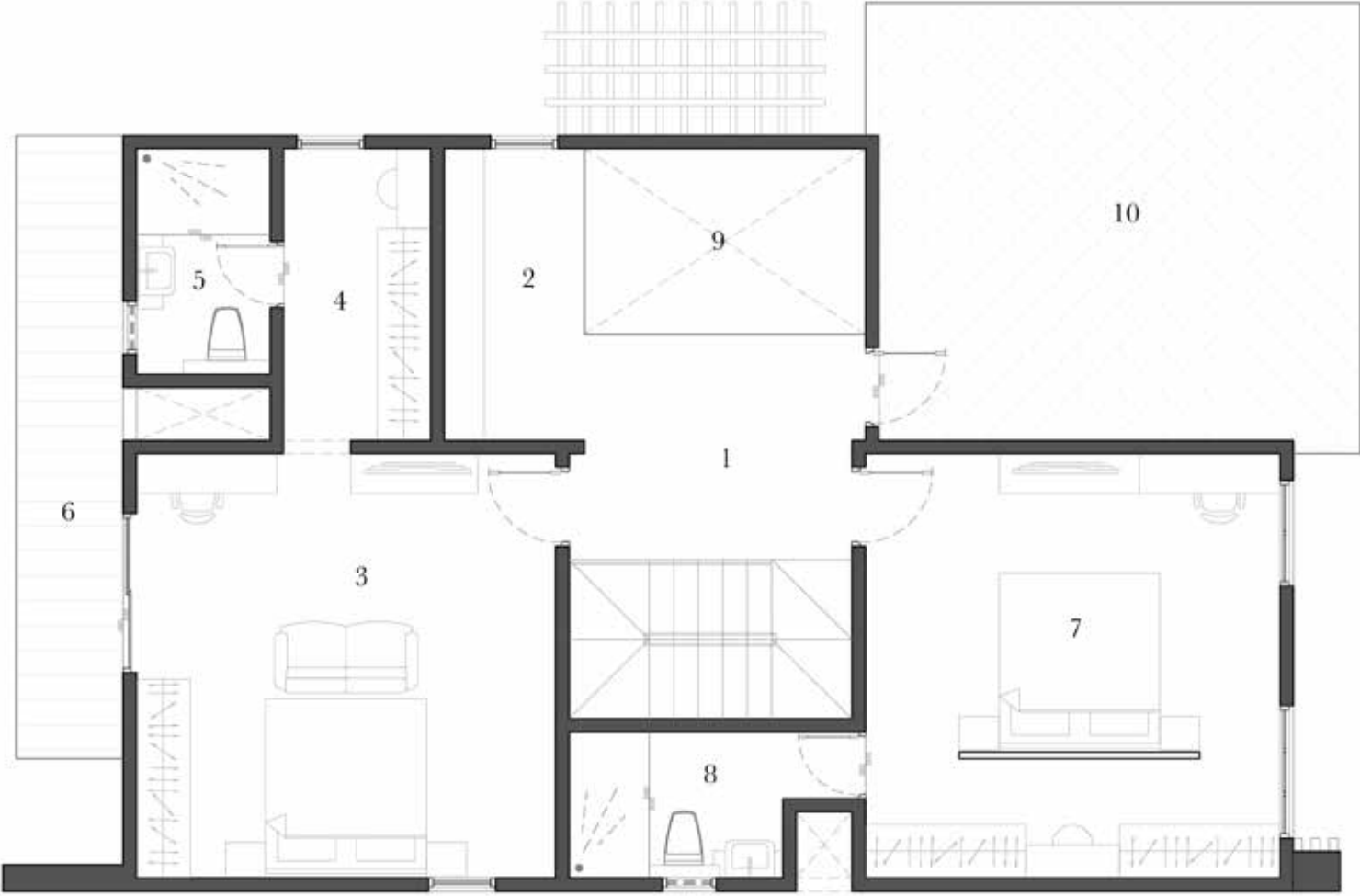
Make your curtains dance to the tune of your fingers.
Think of them as adding a bit of allure and romance to your living space.

VILLA 2E (SBA - 2506 Sft)



GROUND FLOOR PLAN

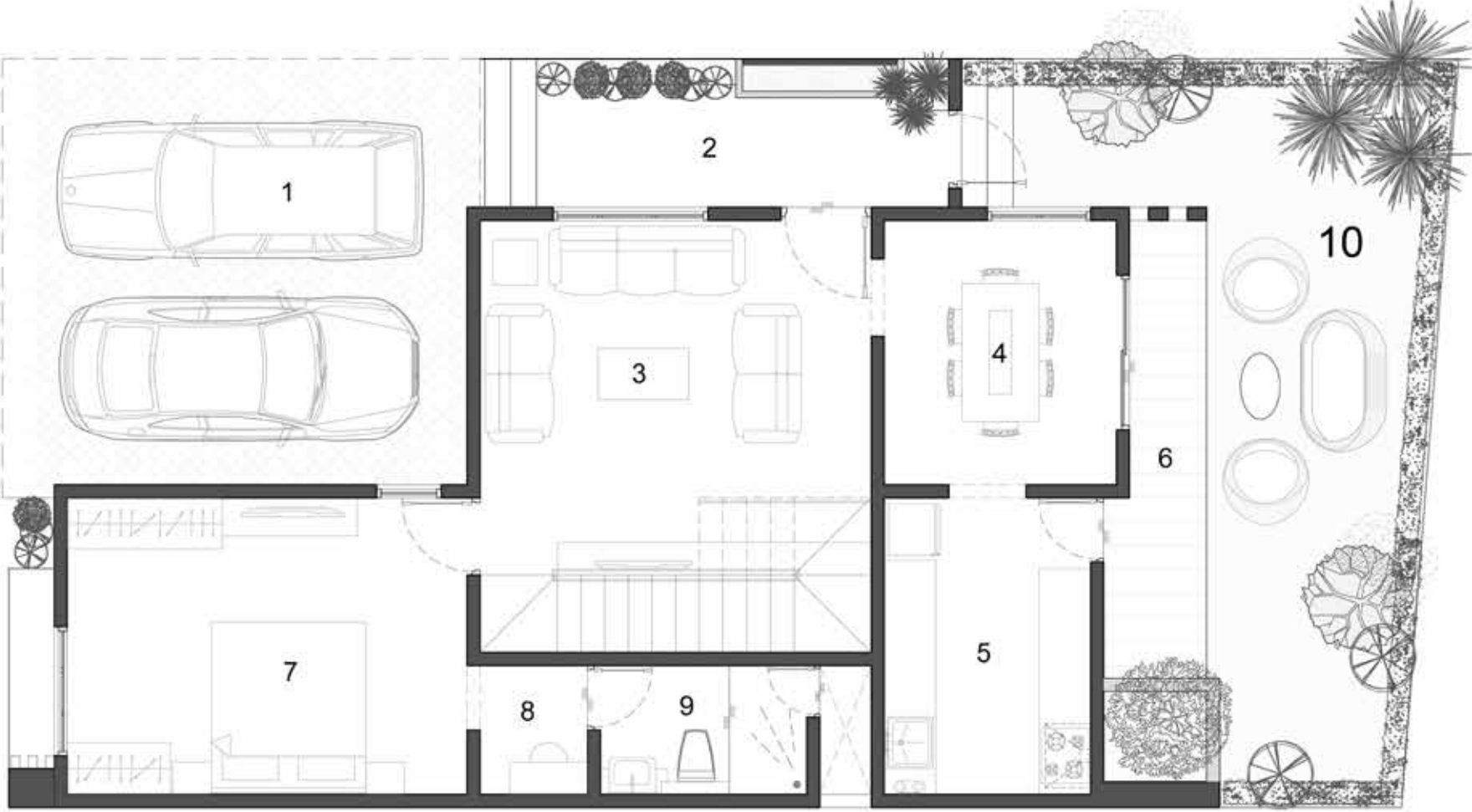
- 1. Car parking - 16'6"x16'6"2
- 2. Living - 15'6"x16'0"
- 3. Dining / Stair - 10'6"x21'6"
- 4. Kitchen - 10'9"x11'0"
- 5. Utility - 5'0"x8'6"
- 6. Deck - 4' wide
- 7. Bed room - 15'8"x16'0"
- 8. Toilet - 8'0"x5'6"
- 9. Deck
- 10. Landscape areas



FIRST FLOOR PLAN

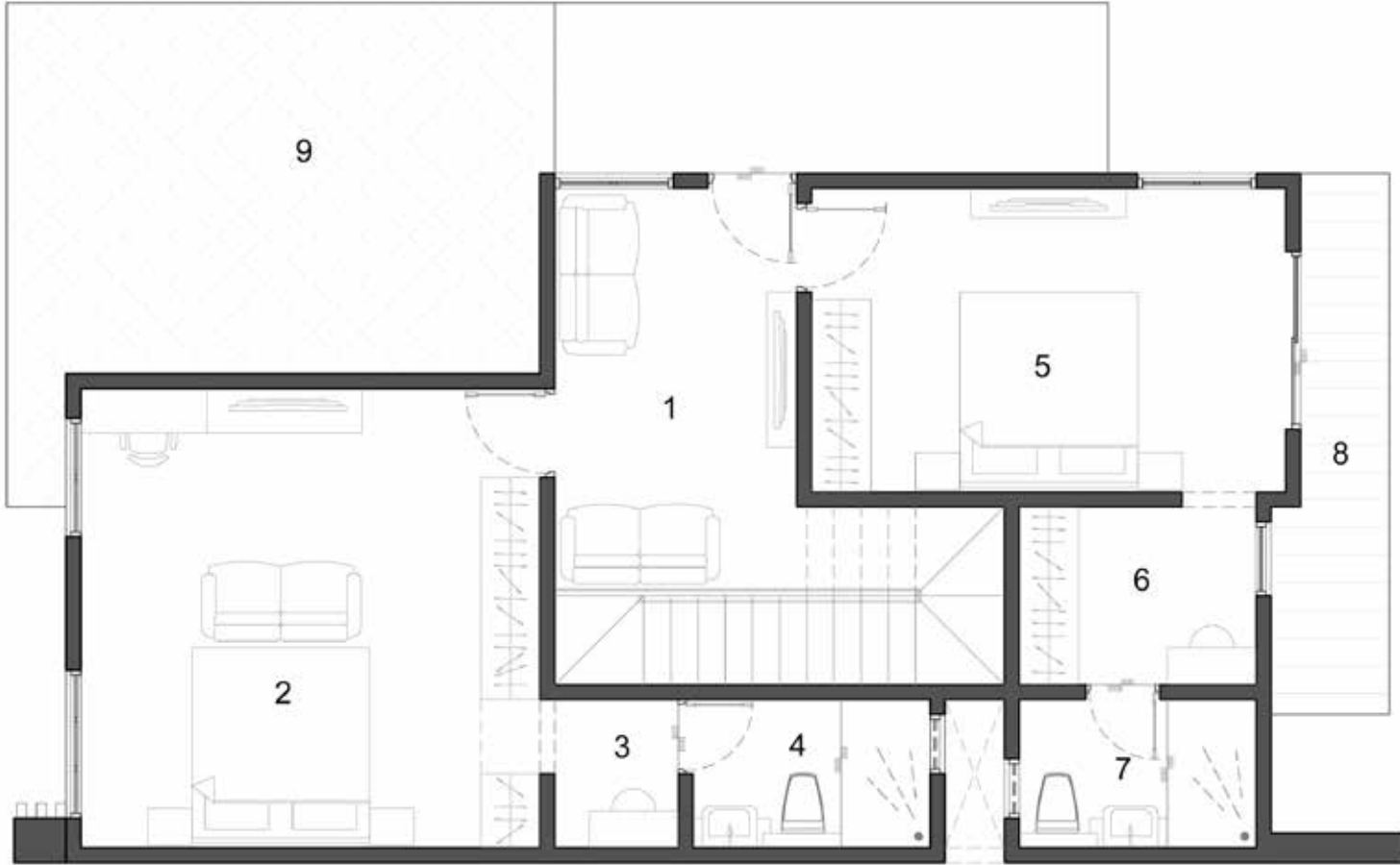
- 1. Lounge - 10'7"x8'6"
- 2. Reading / Library - 5'3"x11'0"
- 3. Bed room - 15'8"x16'0"
- 4. Walk in wardrobe - 5'6"x11'0"
- 5. Toilet - 5'0"x8'6"
- 6. Balcony - 4' Wide
- 7. Bed room -2 / WIR - 15'6"x16'0"
- 8. Toilet - 8'0"x5'6"
- 9. Living Below - Cut open
- 10. Terrace

VILLA 2W (SBA - 2126 Sft)



GROUND FLOOR PLAN

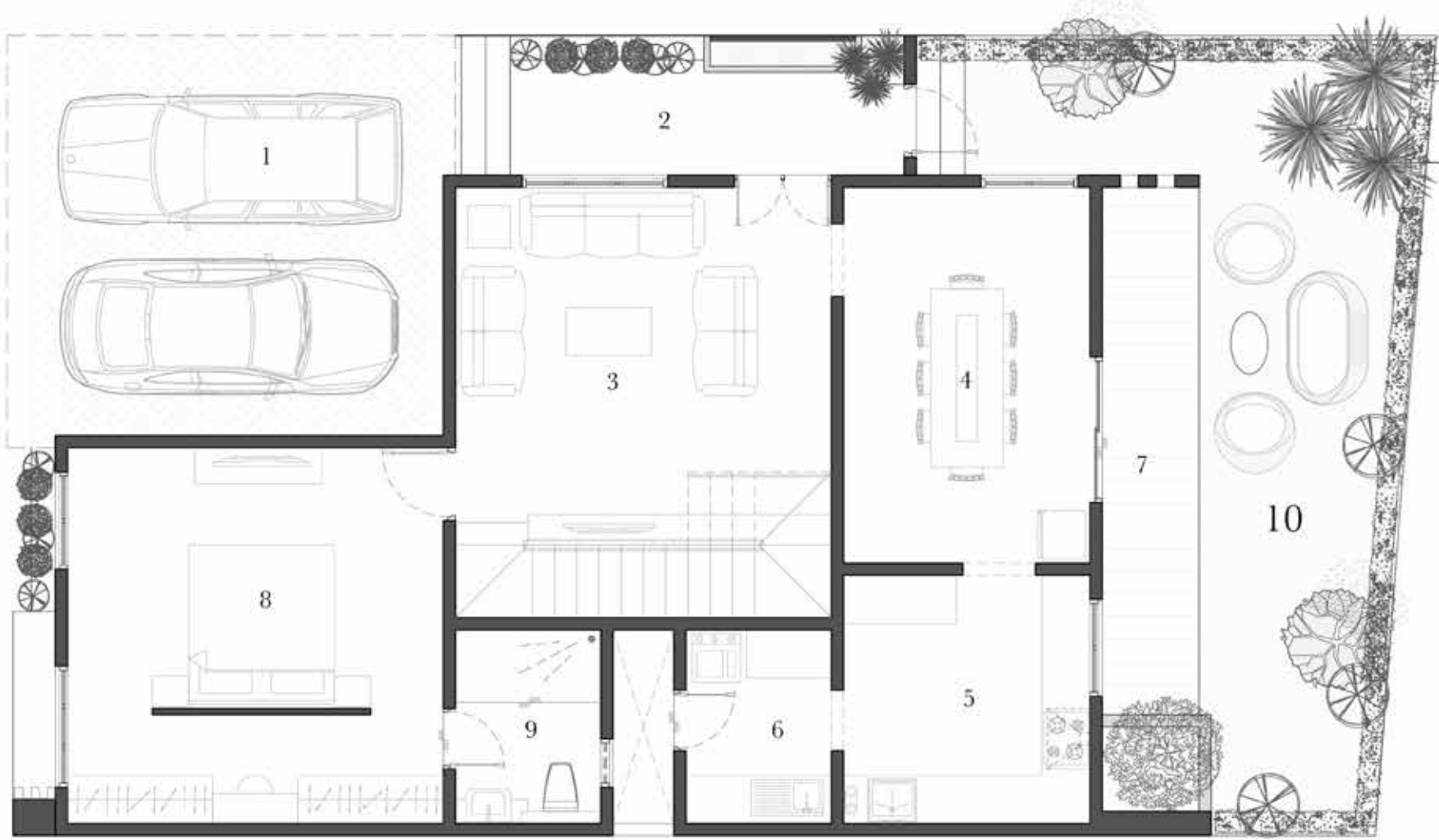
- 1. Car parking - 17'0"x16'6"
- 2. Patio - 5' wide
- 3. Living - 15'2"x16'9"
- 4. Dining - 9'0"x10'3"
- 5. Kitchen - 8'0"x11'6"
- 6. Deck
- 7. Bed room - 15'6"x11'6"
- 8. Dresser - 4'2"x5'0"
- 9. Toilet - 8'0"x5'0"
- 10. Landscape areas



FIRST FLOOR PLAN

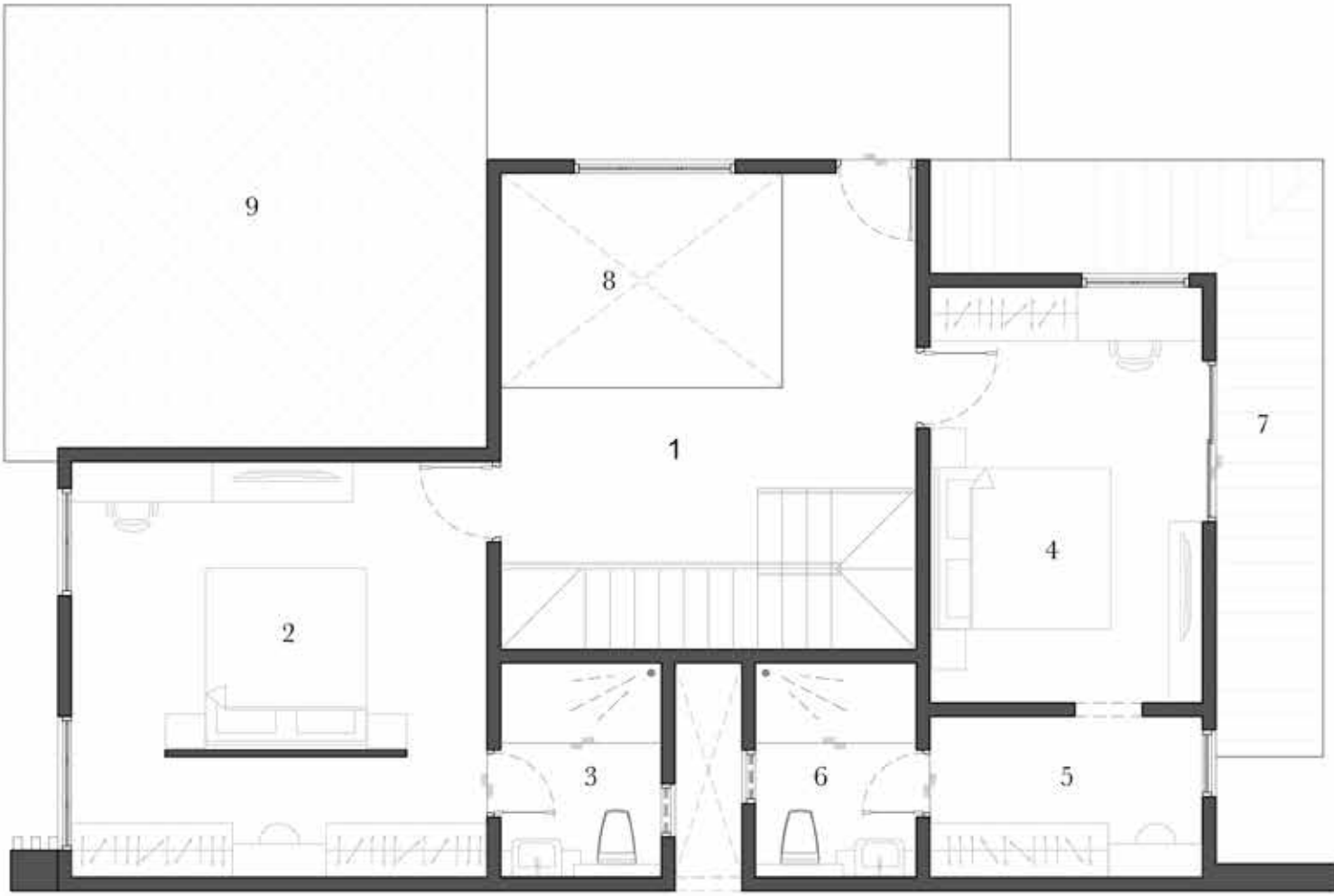
- 1. Lounge - 8'2"x13'9"
- 2. Bed room - 15'6"x15'6"
- 3. Dresser - 4'2"x5'0"
- 4. Toilet - 8'0"x5'0"
- 5. Kids Bed room - 16'0"x10'3"
- 6. Walk in wardrobe - 8'0"x6'0"
- 7. Toilet - 8'0"x5'0"
- 8. Balcony - 4' wide
- 9. Terrace

VILLA 3W (SBA - 2463 Sft)



GROUND FLOOR PLAN

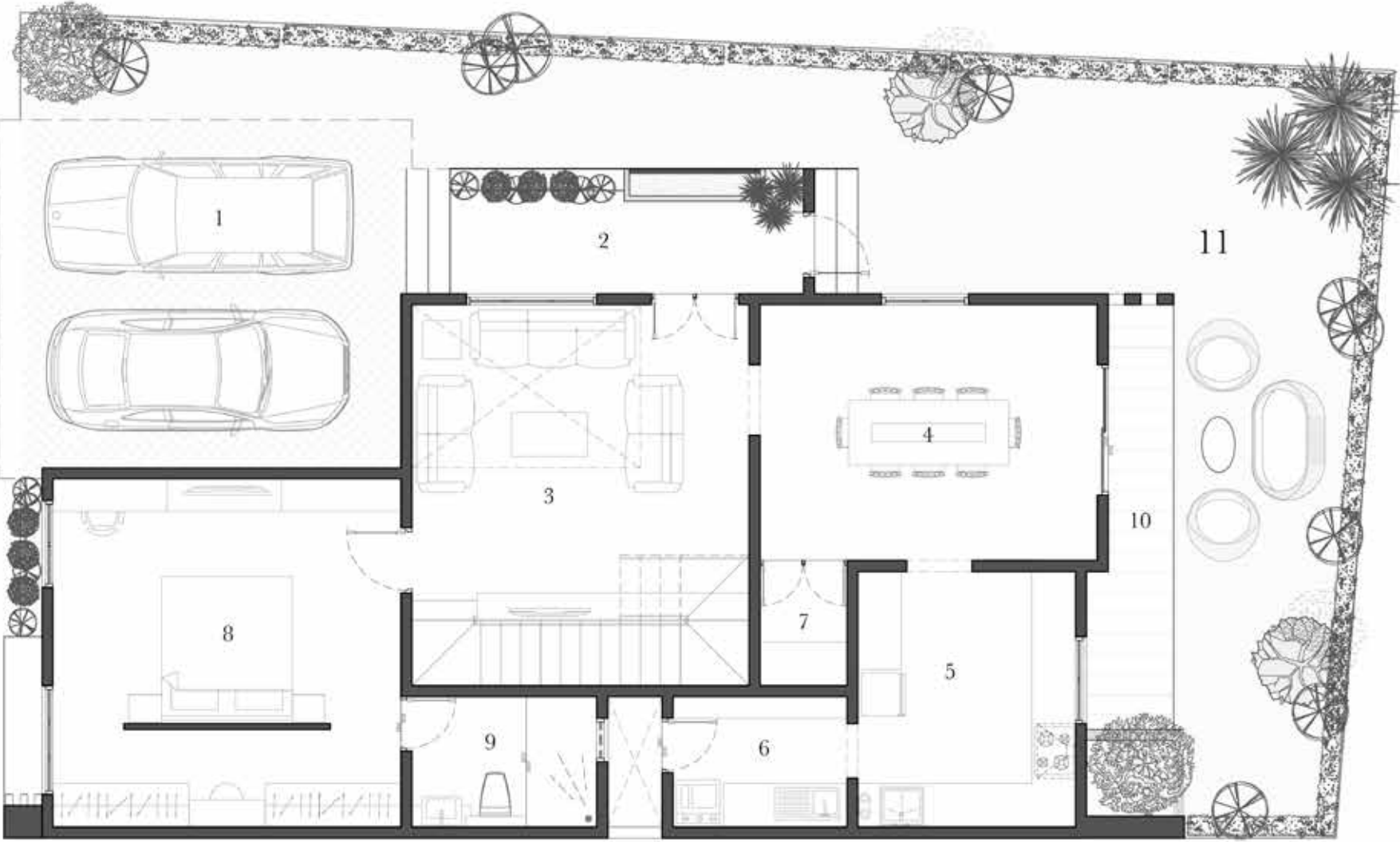
- 1. Car parking - 17'0"x16'6"
- 2. Patio - 5' wide
- 3. Living - 15'6"x17'9"
- 4. Dining - 10'2"x15'6"
- 5. Kitchen - 10'3"x10'2"
- 6. Utility - 6'0"x8'0"
- 7. Deck
- 8. Bed room / WIR - 15'6"x15'6"
- 9. Toilet - 6'0"x8'0"
- 10. Landscape areas



FIRST FLOOR PLAN

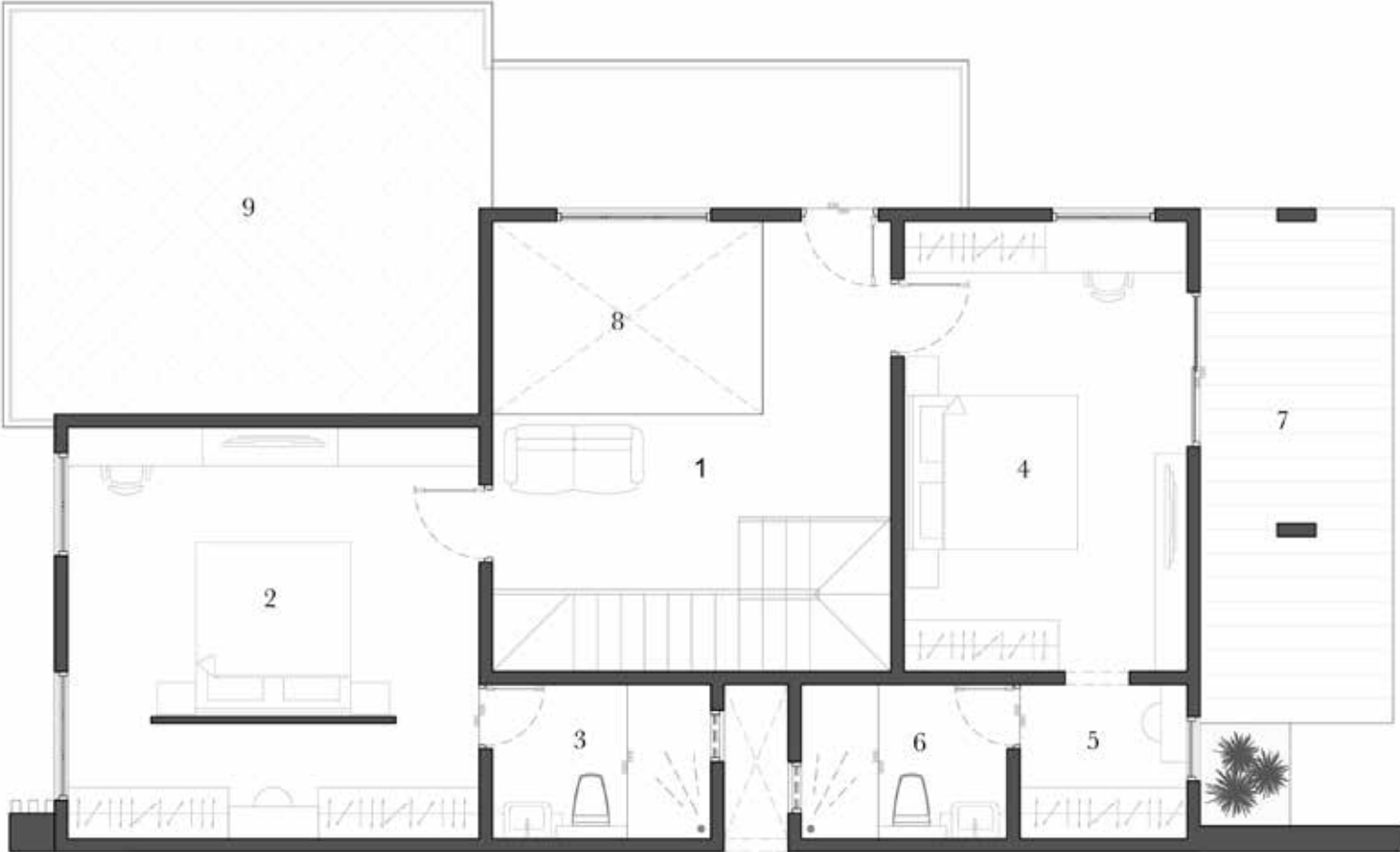
- 1. Passage
- 2. Bed room / WIR - 15'6"x15'6"
- 3. Toilet - 6'0"x8'0"
- 4. Kids Bed room - 10'2"x15'6"
- 5. Walk in wardrobe - 10'2"x6'0"
- 6. Toilet - 6'0"x8'0"
- 7. Balcony - 4' wide
- 8. Living Below - Cut open
- 9. Terrace

VILLA 5W (SBA - 2566 Sft)



GROUND FLOOR PLAN

- 1. Car parking - 17'6"x16'0"
- 2. Patio - 5' wide
- 3. Living - 15'6"x17'6"
- 4. Dining - 15'6"x11'9"
- 5. Kitchen - 10'0"x11'9"
- 6. Utility - 8'0"x6'0"
- 7. Pooja - 4'0"x5'9"
- 8. Bed room / WIR - 16'0"x16'0"
- 9. Toilet - 8'6"x6'0"
- 10. Deck
- 11. Landscape areas



FIRST FLOOR PLAN

- 1. Passage
- 2. Bed room / WIR - 16'0"x16'0"
- 3. Toilet - 8'6"x6'0"
- 4. Kids Bed room - 11'0"x17'6"
- 5. Dresser - 6'0"x6'6"
- 6. Toilet - 8'0"x6'0"
- 7. Balcony - 7'6"x20'0"
- 8. Living Below - Cut open
- 9. Terrace

specifications

STRUCTURE

Ground + 1 storey with optional second floor.

RCC Framed structure with earthquake resistant design - Seismic Zone III.

Steel- Fe500 Grade.

Blocks are internally finished with Gypsum Plaster & Externally finished with cement plaster with water proofing Components.

Clear unfinished ceiling height -10'.

Anti-termite treatment in Plinth area

Cement – PPC Grade.

WALL & CEILING FINISHES

Interior wall -1 Coat of Primer & 2 Coats of Premium Emulsion Paint. (Nippon or its Equivalent)

Exterior walls - 1 coat of primer and 2 coats of Weather-proof Exterior emulsion.

Grills/railings - Primer and 2 coats of Enamel paint.

Ceiling - False ceiling 2 Coats of Putty, 1 Coat of Primer & 2 Coats of Premium Emulsion Paint.

Note: Gypsum False ceiling with basic Electrical provisions

FLOORING

Living, Lounge, Dining, Bedroom (other than M.bed Room) and kitchen - 4' x 2' Double glazed vitrified flooring tiles.

Master bedroom & Deck - Engineered wooden flooring with skirting.

Balcony, Utility and Covered terrace - Anti-skid ceramic tile flooring.

Open Terrace - Weather resistant clay tile @Terrace Floor only.

Staircase – Granite Flooring with SS hand rail.

KITCHEN & UTILITY

Wall dado – Tile dado up to 2ft height from Counter top.

Copper Gas piping - from external gas bunk to hob provision area.

Others –

Provision for Chimney (Electrical only).

Provision of water purifier (Electrical & water Inlet only).

Utility -SS sink with faucet – Cold water inlet only

Washbasin provided in Dining with wall fixed.

BATHROOM

Wall : Dado tiles up to 8 feet height – 2x2 DGVT tiles.

Floor : 1x1 Antiskid Floor tiles

American Standard / TOTO-Wall mounted WC with concealed tank and CP fittings Etc,

Hot water provision for Shower and bath spout.

False Ceiling @8 feet height.

Provision of exhaust fan in all bathrooms.

All bathrooms are connected with solar water heater lines.

JOINERIES

Main Door –Teak wood frame and Designer Moulded Shutter with Biometric lock ,Antique finish Brass hardware.

Bedroom Doors – Seasoned wood frame with Plain moulded door shutters with Godrej locks, with matt finish SS hardware.

Bathroom Doors – Seasoned wood frame with (FRP) Door Shutter.

Utility Doors – Seasoned wood frame with water proof wooden flush door

Balcony Doors – UPVC with toughened Glass door.

Windows – UPVC Windows with see-through Plain Glass & MS Safety grill.

MS Grills will not be provided for Fixed windows. (for Elevation windows)

Ventilators – UPVC & Frosted Glass with Louvered Panels & exhaust provision.

ELECTRICAL

Underground Electrical Cables

Power Supply –3 Phase EB Connections.

Cables / wires – **Polycab** or its Equivalent brand.

Modular Switches & Sockets – **Legrand / Polycab.**

MCB, **ELCB** andDB with safe trip – **Siemens.**

Air Conditioner Points –Split AC provision inLiving and all Bedrooms.

Note: Does not involve any Copper / Drain Piping.

Intercom Point – Provision in Living& Master bedroom only.

DTH / TV Points – DTH / TV Point in Living & Master Bedroom.

PLUMBING

All CPVC/PVC/UPVC lines are from Finolex /Astral.

Concealed CPVC pipelines for hot & Drinking water Supply.

Other plumbing lines will be UPVC.

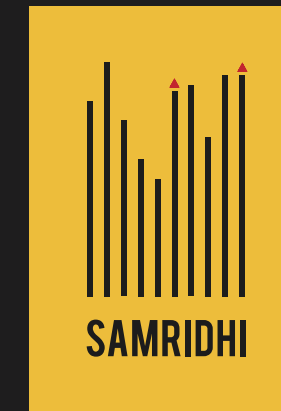
PVC pipeline for underground drainage.

Provision for a solar water heater on the terrace (Plumbing and electrical only).



about us

At Samridhi we are always in-step with developing trends and the minds behind them. And it's in reverence for such minds that steer the way to the future that we dedicate all our work. For us old-world values like honesty, diligence and discipline are not old at all, but bulwarks on which the new-world values of technology, aesthetics and design stand on. Every thought we have, every house we build, is done keeping our values and virtues at the core.



The Envelope

The Envelope, Kalapatti Road, Behind NGP School, Coimbatore - 641014
P: +91 90950 27000 | +91 90439 75000 E: sales@samridhi.com

theenvelope.in

Disclaimer: The information contained about the project in this brochure is very general in nature. The images, layout themes, project landscapes, interiors, lighting, amenities in this brochure/advertisement and promotional documents are only representational and informative. The information, images and visuals, drawing plans or sketches shown in this brochure/advertisement and other promotional documents are only an architect's impression and are only indicative of the envisaged developments. They may vary during the execution. The Promoter reserves the right to make additions, deletions, alterations or amendments as and when they deem fit and proper, without any prior notice. The furniture shown in the plans is only for the purpose of illustrating a possible layout and does not form a part of the offering or specification. The relationship between the Promoter and actual customers will be governed strictly by the agreements to be executed from time-to-time and not on the terms of this brochure/advertisement or other promotional documents. You are required to verify all the details of the project independently prior to concluding any decision of buying in Samridhi The Envelope. The content of this brochure should not be treated as any kind of an offer by the Promoter.