



BIG HIGH ON HIGHWAY





CITY SOUL

CITY OF LEGENDS : KURUKSHETRA

Kurukshetra is a place of great historical and religious importance, revered all over the country for its sacred association with the Vedas and the Vedic Culture. It was here that the battle of Mahabharat was fought and Lord Krishna preached his philosophy of 'KARMA' as enshrined in the Holy Bhagwad Gita, to Arjuna at Jyotisar.

KURUKSHETRA

In the very first verse of Bhagwad-Gita, Kurukshetra is described as DHARAMKSHETRA i.e., 'Region of righteousness'.

The land where Bhagvad Gita was preached, is today an important trade and business hub for the satellite towns in the district. Kurukshetra enjoys a location of convenience being within the network of roadways and railways. A large number of industrial units and MNC's are venturing in the region making this location pulsating with power.



RIISING OF ANOTHER LEGEND : SHREE VARDHMAN CITY



With growing affluence and changing aspirations, the city has also witnessed a tremendous influx of population from the satellite towns. All these factors have contributed to the increased demand for modern homes with all modern amenities and infrastructure.

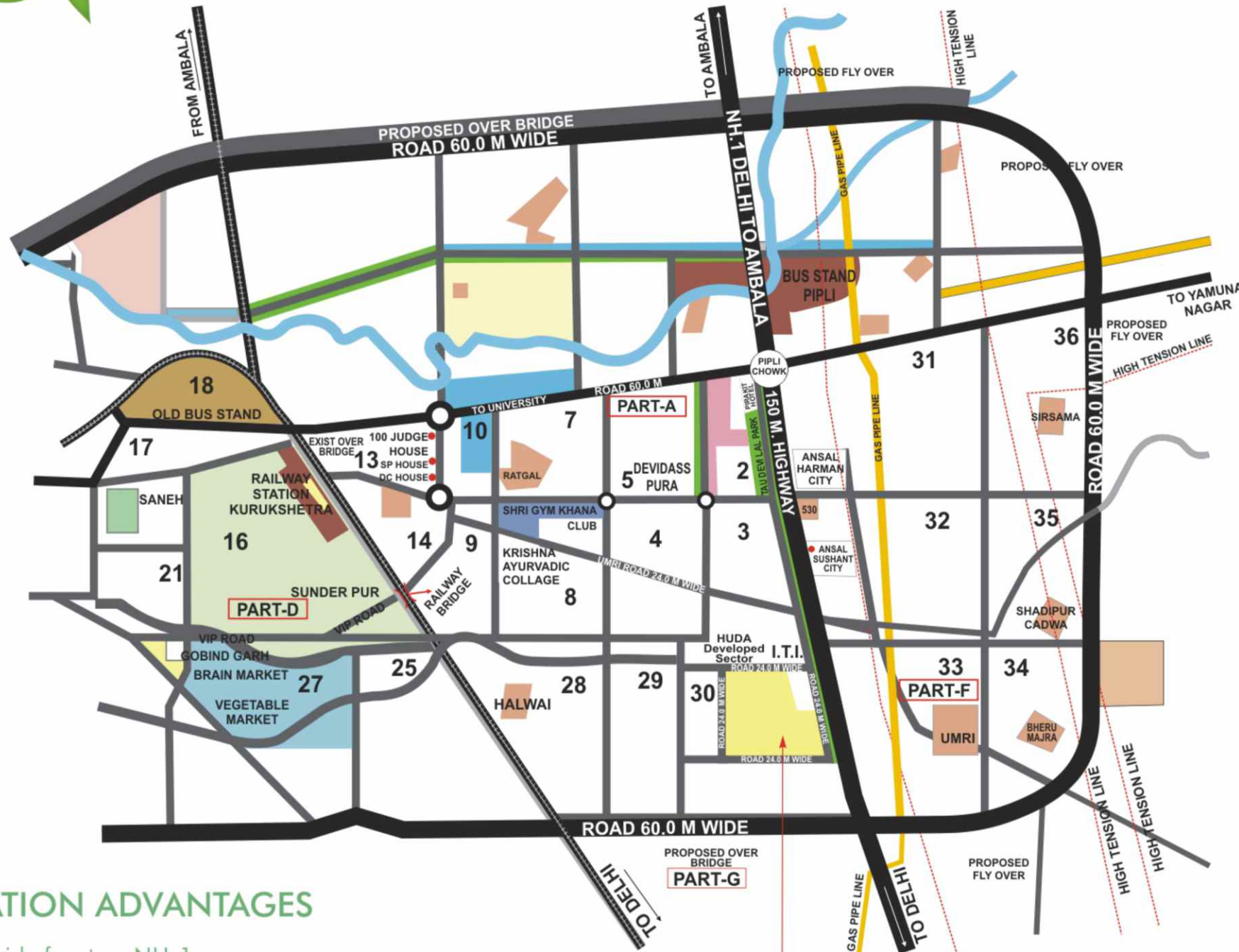
 with its strategic location is the first township of Kurukshetra on National Highway-I, adjacent to the developed HUDA sectors.

Project approved by Director, Town & Country Planning (DTCP, Haryana) vide Licence No. 15/2012 dt. 29/2/2012



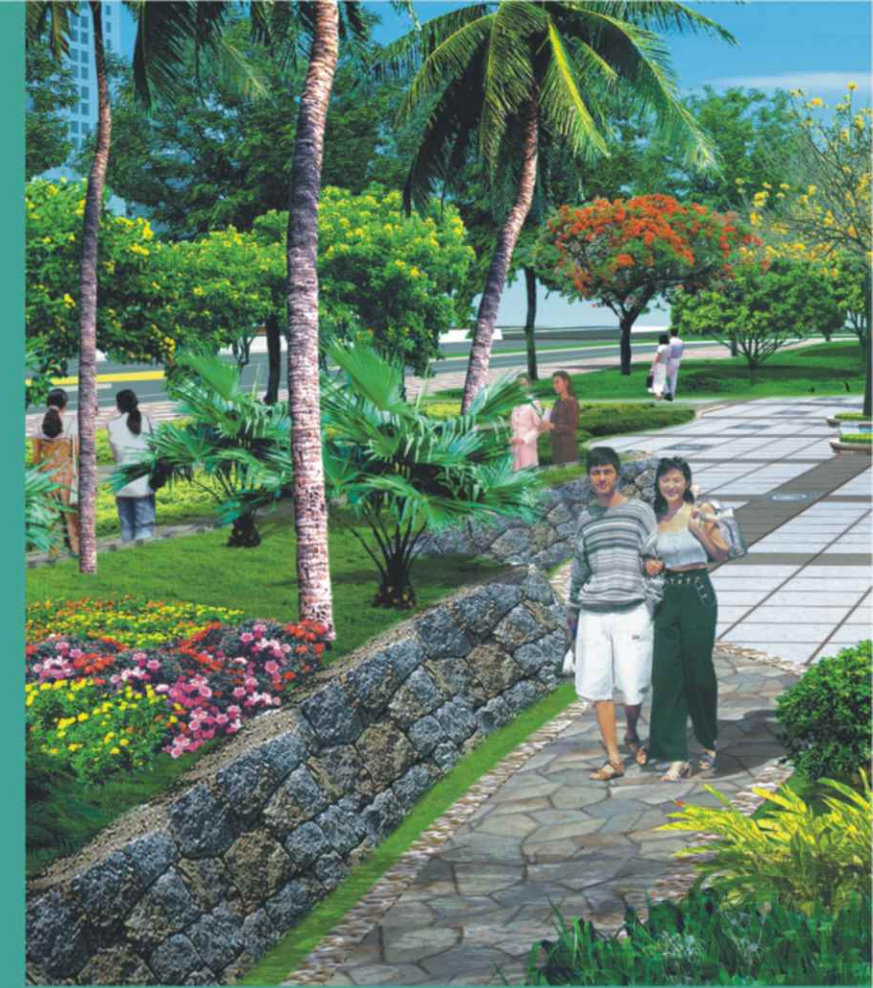
SHREE VARDHMAN City

SECTOR-30, NH-1, KURUKSHETRA



LOCATION ADVANTAGES

- 600 ft. wide front on NH-1
- Adjacent to Developed HUDA Sector-30
- Near ISBT & Railway station of Kurukshetra





- Planned township with wide streets
- Majestic entrance with water features
- Tree laned boulevards
- Paved walkways and Jogging tracks
- Beautifully landscaped gardens with water bodies
- Shopping centre and Health club with gym
- Nursery and Primary school
- Nursing homes

OVERVIEW

TOWNSHIP AT A GLANCE



is a state of the art township that aims to redefine standards of self-contained community living in India. It is your chance to live in the finest new address at surprisingly affordable prices.

Resounding with serenity and sophistication, Shree Vardhman City is an array of amazing abodes. Plots and Independent Floors have been customised to suit individual tastes and needs. Innovatively designed with aesthetics and eco friendly features, the wondrous homes complement all family needs.

Each dwelling is significantly surrounded by swinging greens, carpeted pathways and open spaces. Elegant exteriors and inviting interiors symbolise the spaciousness and clutter-free openness.

With every possible amenity, the city of pleasures stands out at an ideal location beckoning the urban dwellers with aspirations and dreams.





inside outside

INDEPENDENT FLOORS

The appealing floors at  would mesmerise the future residents. A harmonic blend of aesthetics and functionality, the floors are meticulously designed. The ultra premium independent floors are well laid out with maximum utilization of space.

A symphonic mix of grace and elegance, nature's naturalness floods each home at dawn and dusk, bestowing tranquility and harmony. Privacy, space and comfort have been the top priority in creation of the alluring floors at Shree Vardhman City.







wider world

GREAT SPACE FOR EVERYTHING

Observe how 'Gleeful Greenery' and 'Serene Sky' weave a magical carpet of spellbinding surroundings!

Landscaping and parks will be revered by one and all. Witness the happiness and sheer bliss on the innocent faces of children who will spend their delightful playtime in the arms of luxuriant flora. Breathe in rich and unadulterated air to pamper your system...Smell the fragrance of attractive flowers to sense the thrill of natural beauty.

Unbound conveniences and adorable amenities at **SHREE VARDHMAN City** add hues of happiness to everyday mundane life. Wide, brightly lit roads, pollution-free atmosphere, surrounding colonnade, wonderful water bodies, fantastic fountains, gardens, outstanding open areas for kids and adults - all the features elevate Shree Vardhman City to the status of a DREAM-DESTINATION.






- Grid street pattern
- Regular & geometrical shape of plots
- Maximum green area
- Tree laned boulevards
- Paved walkways and Jogging tracks
- Demarcation of residential & other areas to minimise noise, air and visual pollution
- Sophisticated sewage disposal and Drainage system
- Beautifully landscaped gardens with water bodies





OUT RUNS

SHOPPING & LEISURE ACTIVITIES

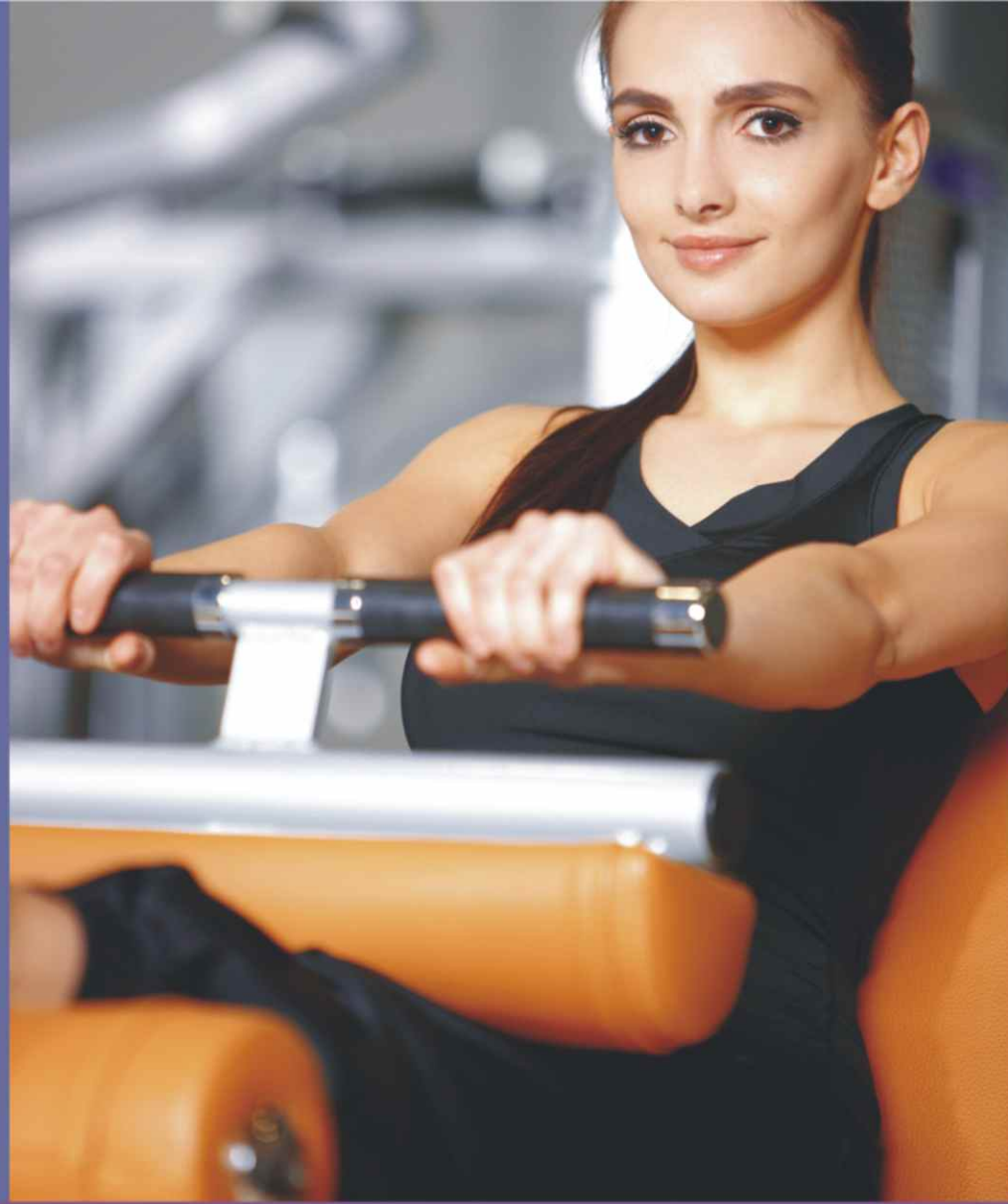
 is not merely residential township. It is a complete lifestyle destination. With a dedicated shopping centre within the township, Shree Vardhman City offers plethora of leisure and entertainment options.

While the convenience stores within the shopping centre take care of every day needs, the boutiques, video games parlour, cafeteria and an entire gamut of retail outlets take care of each and every need of the residents.

A gym with a recreational center within the shopping centre precincts would offer a complete "fitness-cum-fun" program, Refreshing, relaxing and rejuvenating the club area is destined to be abuzz with activity and amusements. It's the symbol of synergy, an enhancer of mood and spirit.

The focus of fun and fitness.





- Shopping center with convenience stores, boutiques, video games parlour, branded outlets, chemist, banks, ATM, Health club and gym equipped with latest equipment
- Milk & Vegetables booths





orbit | scan
THE AMENITIES SURROUND

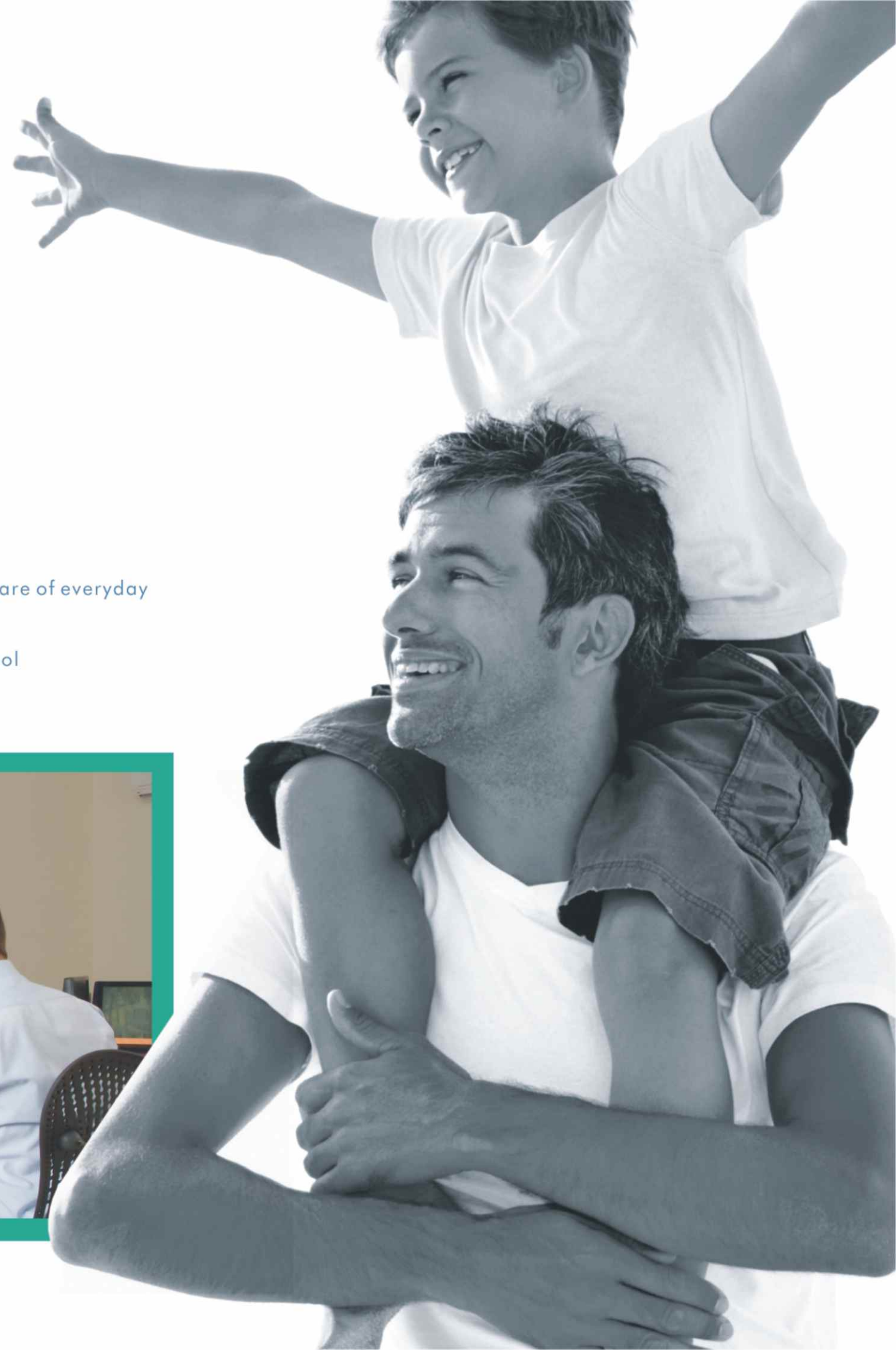
Perfectly planned and qualitatively constructed  is a treasure house of amicable amenities, lavish luxuries and cool conveniences. The residents enjoy all the benefits of fully developed infrastructure, as the township is surrounded by already developed HUDA sectors.

Play school, primary school, nursing home, 24 hours security are the distinguishing facets of the classic and elegant township. The array of amenities at Shree Vardhman City signifies that the needs of the potential residents have been the top-priority in the development of the township.






- 24 x 7 security
- Nursing home to take care of everyday medical emergencies
- Nursery & Primary school





the team

SOMETHING ABOUT US

 reflects another major milestone for Shree Vardhman Group. An organisation which has carved a niche for itself in the real estate development.

With more than two decades experience in marketing and promotion of various residential and commercial projects, the organisation has a strong investor base. The qualities that set this group apart amongst its contemporaries are its privileged viewpoint and daunting passion. Every endeavour and effort clearly emphasises the credibility and integrity that the group enjoys.



OTHER PROJECTS



SHREE VARDHMAN FLORA - Sector 90, Gurgaon ▲



SHREE VARDHMAN SHOPPING ARCADE - Gurgaon ▲



SHREE VARDHMAN MANTRA ARCADE - Gurgaon ▲



SHREE VARDHMAN GARDENIA - Sector-10, Sonapat ▲



SHREE VARDHMAN MANTRA - Sector 67, Gurgaon ▲





SHREE VARDHMAN TOWNSHIP PVT. LTD.
Regd. & Corporate Office : 301, 3rd Floor, Indraprakash Building,
21-Barakhamba Road, New Delhi - 110001 (INDIA)
Phone : +91-11-43605560 (100 Lines)
Fax : +91-11-23739599 • E-mail : vdil_05@yahoo.co.in
Website : www.shreevardhmandevelopers.com

• GROUP HOUSING • TOWNSHIPS • COMMERCIALS • SCHOOLS

Note : Visual representations shown in this brochure are purely conceptual. All Specifications, Layout Plans etc. are tentative and subject to variation & modification by the company or the competent authorities.