

BizMark
Setting Landmark



PRAGATI PEARL

Dream Home Comes True

RERA No.- PCGRERA280618000367





BIZMARK GROUP OUTLOOK

A young and dynamic entrepreneur Mr Pankaj Chopra who rose to fame when he skillfully engineered an opportunity to spearhead a Real Estate company that got him sterling success. With his profound business experience of around 21 years, he discovered his strengths in sales and marketing that galvanized him to enter into marketing business. He began his entrepreneurial journey with the computer world and later he entered into a Real Estate and instituted the Bizmark Group.

This Group has flourished under his leadership remarkably and augmented with its relentless vigour. Over the time this group has been successfully able to establish its hegemony in the sphere of marketing Real Estate in Raipur.



A PIVOTAL POINT OF RAIPUR

Pragati Pearl has been flawlessly located in the greens of Raipur. This location is pivotal for all significant spots in the vicinity that provides easy access to its inhabitants for every single important destination. Raipur's most delicate location that will arrest you with its exotica far from rush and closer to serenity.







THE NUCLEUS OF RISING PROSPERITY

Pragati Pearl offers a sumptuous lifestyle that is coveted for everyone. A lavish lifestyle that you are worthy of because your family is special. Meticulously planned an opulent lifestyle that will enrapture you with its captivating features and amenities. These flats are aimed at getting people ecstasy in their lives because it would be a unique blend of luxury, camaraderie and serenity.







Biz Mark

Pragati Pearl

Audi
#reelidomagnificence.com

#reelidomagnificence.com



RE-DEFINING LIFESTYLE

A pursuit of life seeking peace, prosperity and zest where you get an elaborate meaning of life. The spellbinding positive energy radiating through these lavish flats will make your life facile to savour its rarefied living standards. With 224 affordable flats of 2bhk in approximately 2 acres area having 4 towers ranging 985-1075 sqft with lots of modern amenities and structure.





EXPLORE THE BLISSFUL AMENITIES

We are here to create more than just flats that offer lavish lifestyle because we have been endeavouring to connect and nurture every emotion so as to bring solidarity and euphoric lifestyle. We strive to endow you with overall high-end benefits, utility and resources that stimulate to cultivate an ostentatious and luxurious livelihood as it encompasses the range of amenities.







AN UNPARALLELED CLUB HOUSE AMENITIES

We offer you stupendous club-house amenities that embrace a heavenly cluster which incorporates a modern facility club-house with waiting zone, multipurpose party Hall, yoga and meditation area, society activity area, dance-room, modern gym, spa, gaming zone, open terrace for the party. All these facilities ensure you with an unparalleled way of relishing life.





ELABORATE FLOOR PLAN

We strive that your expectation meets with our schematic floor plan, as it is uniquely designed to tailor your tastes and comfortable lifestyle. Floor plans have been designed so vividly and elaborately that it casts an enchanting spell to the observer.



SINGLE UNIT FLOOR PLAN

RERA CARPET AREA	55.20 SQM.
BUI AREA	59.90 SQM.
BUI+BAL/WASH AREA	72.60 SQM.
SUPER BUILTUP AREA	97.98 SQM.

SINGLE UNIT FLOOR PLAN

RERA CARPET AREA	55.00 SQM.
BUI AREA	59.70 SQM.
BUI+BAL/WASH AREA	76.60 SQM.
SUPER BUILTUP AREA	92.98 SQM.



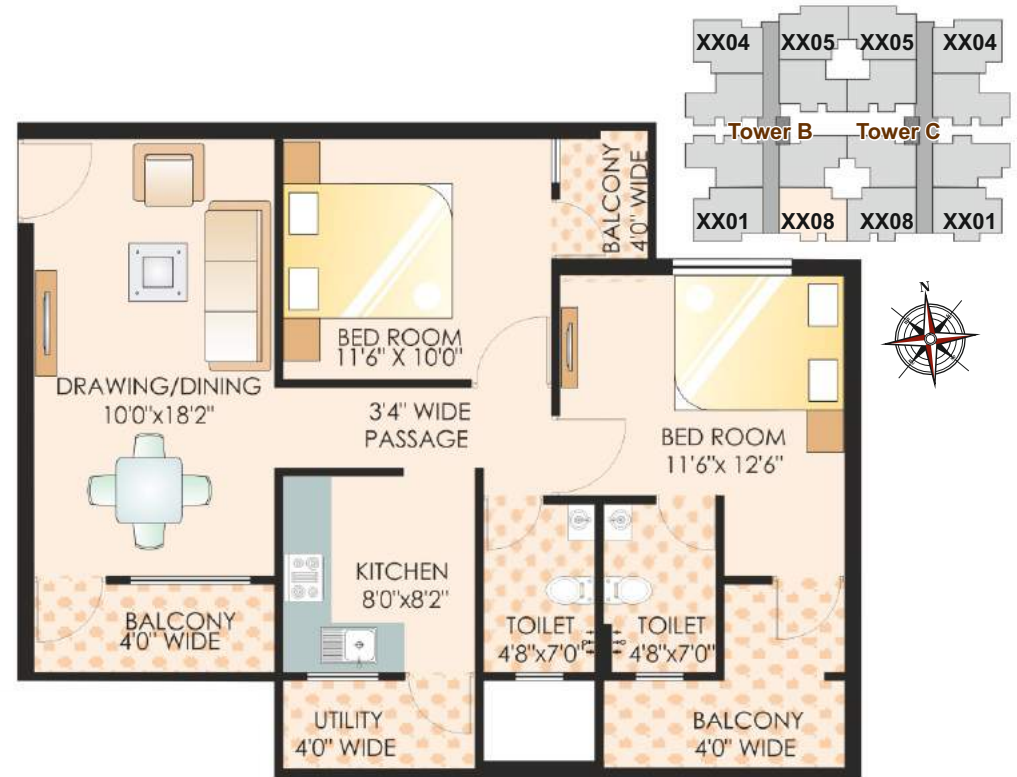
SINGLE UNIT FLOOR PLAN

RERA CARPET AREA	56.00 SQM.
BUI AREA	59.70 SQM.
BUI+BAL/WASH AREA	66.20 SQM.
SUPER BUILTUP AREA	91.58 SQM.



SINGLE UNIT FLOOR PLAN

RERA CARPET AREA	55.30 SQM.
BUI AREA	59.90 SQM.
BUI+BAL/WASH AREA	74.40 SQM.
SUPER BUILTUP AREA	99.78 SQM.



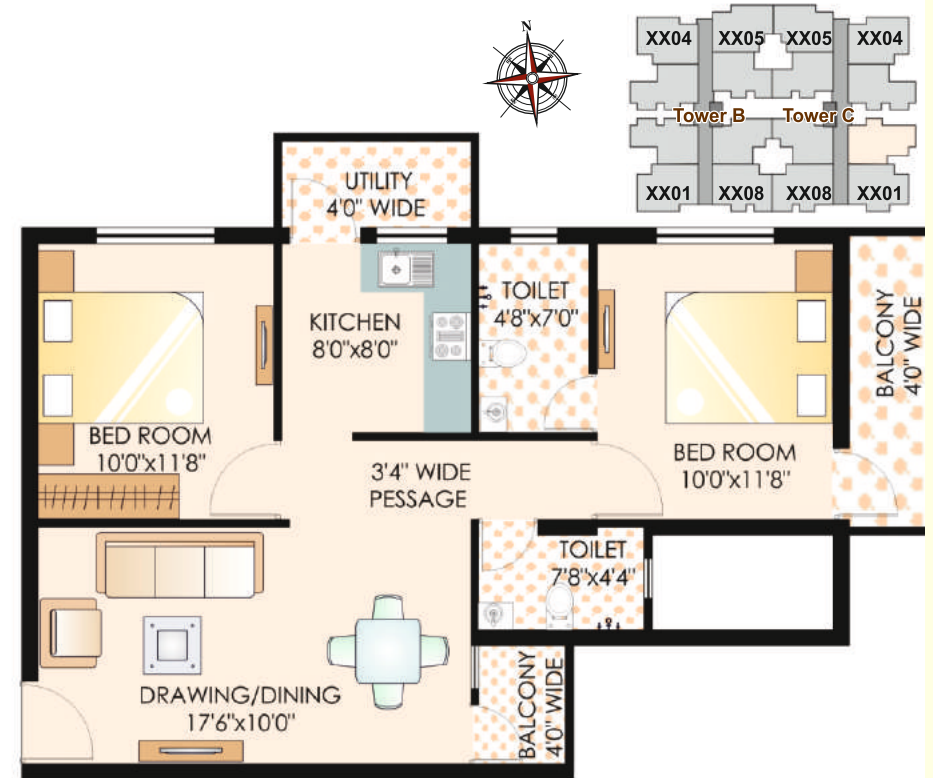
SINGLE UNIT FLOOR PLAN

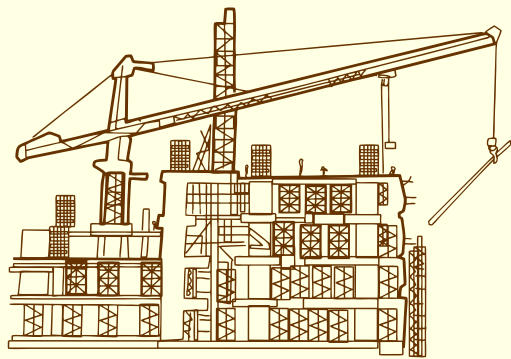
RERA CARPET AREA	55.10 SQM.
BUI AREA	59.90 SQM.
BUI+BAL/WASH AREA	70.90 SQM.
SUPER BUILTUP AREA	96.28 SQM.



SINGLE UNIT FLOOR PLAN

RERA CARPET AREA	55.50 SQM.
BUI AREA	59.80 SQM.
BUI+BAL/WASH AREA	69.50 SQM.
SUPER BUILTUP AREA	94.88 SQM.





FUSION OF RICH SPECIFICATIONS

Pragati Pearl has integrated all the useful commodities that are indispensable for a pleasant lifestyle. Raw materials and designs, used here are of high standards that strengthen the magnificence of awe-inspiring, 2BHK towering flats. Further, its material and design specifications, being made open to public scrutiny, makes it more delectable for people.



SPECIFICATION

- **STRUCTURE**

Enhanced structure for safety against earth quakes. The BCC framed structure made up of **TATA/SAIL Steel** and fine quality of both inside and outside faced plaster give a robust strength to your dream abode.

- **WALLS AND CELLINGS**

Internal walls & cellings of the hall, dining area and bedrooms will be smoothen by two coats of Birla putty.

- **FLOORS**

Floors of living, Dinning, Bedrooms will be covered by 2x2 (double charge) vitrified tiles. Floors of balcony & bath area will be covered by antiskid tiles.

- **KITCHEN**

Kitchen Platform will be of Granite & it will be equipped with branded sink. 2' dado will be fitted over granitite platform to give elegant look.

- **DOORS AND WINDOWS**

All doors frames made up of wood/Granite. All windows are triple channel powdered coated aluminium. Ventilation for exhaust fan in Kitchen and toilets. Doors are of pre-pressed and pre-tested quality and these are all boarded.

- **ELECTRIFICATION**

Only reputed brands will be used for all cables & modular switches. Electrical point for geyser in toilets & electrical point for equipments in wash area will be provided.

- **TOILET**

Perfectly designed toilets to separate dry & wet areas. 7' Dado will display designer look. All toilets will be equipped with wall hung WC, wash basin, Flush valve; Over head shower & sink taps.

- **LAUNDRY/WASH AREA**

Safe and dedicated space for washing and drying area of cloths. To meet the washing needs this space has appropriate plumbing points and electrical sockets.

- **WATER SUPPLY**

we have provided a separate overhead tank for each tower that will ensure its inhabitants water facility. further, underground tanks for water storage have been set-up to increase water resourcefulness and contingency.

- **EXTERNAL COLOUR**

Double coat water repellent colour along with weather textured paint maintain work like anti-aging therapy and maintain the outside beauty of your home for couple of yours.

- **ELEVATOR**

Make up and down without any fear as we equipped the building with the 2 elevators in each tower.

- **GENERAL SECURITY**

The entire campus is secured for all inmates and considering the vulnerability of women children and senior citizen the campus is under stage by boundary wall. To keep eye on every entry and exit alert security guards along with the CCTV cameras protects will be available.





CONNECTIVITY

CONNECTIVITY

- ISBT Bus Stand: 2-3 Minutes (Walk-in)
- Railway Station: 15-20 Minutes
- Jaistambh Chowk: 7-10 Minutes
- Airport : 18-20 Minutes

SCHOOLS

- Bhramhvid The Global School :3-5 Minutes
- Shivansh International School : 5-7 Minutes
- GD Goenka International School :7-10 Minutes
- R.K.Sarda Vidya Mandir:7-10 Minutes
- Krishna Public School: 7-10 Minutes
- Radiant Public School: 12-15 Minutes

COLLEGES

- Adarsh Nursing College: 5-7 Minutes
- KBT Joulisim University: 5-7 Minutes
- Present IIT, IIM & GEC Campus: 10-12 Minutes
- Shankracharya Engenering College : 10-12 Minutes
- Pt. Ravi Shankar University: 10-12 Minutes
- Science College: 10-12 Minutes
- Aurvedic College: 10-12 Minutes
- NIT : 10-12 Minutes

HOSPITAL

- Ramakrishna Care: 7-10 Minutes
- VY Hospital: 7-10 Minutes
- MMI Hospital: 7-10 Minutes
- Medicine Hospital: 7-10 Minutes
- DK Hospital: 7-10 Minutes
- Mekahara Hospital (Medical College): 7-10 Minutes

MARKET PLACE

- Bhatagaon :Walking Distance
- D-Mart: 7-10 Minutes
- All other Major Markets: 7-10 Minutes
- Colors Mall: 7-10 min
- Magneto: 12-15 mIn
- 36 City Mall: 12-15 Min

ENTERTAINMENT ZONE

- Laxman Jhula/Kharun River Front: 2-3 Minutes
- Inderaprasta Wonderland Water Park: 5-7 Minutes
- Oxy Zone & Central Library Parisar: 10-12 Miuntes
- International Swimming Center: 10-12 Minutes
- International Hockey Stadium: 10-12 Minutes
- Indoor & Outdoor Stadium: 5-7 Minutes
- Sapre School Play Ground: 5-7 Minutes



SITE /LAYOUT





Biz Mark

Pragati Pearl

Marketed By



RERA No. : CGRERA150518A000120

Corporate Office Address:

3rd Floor, PNB building, Tikrapara Chowk, Raipur, Chhattisgarh

Landline Number:

0771- 4915699/4915799

enquiry@bizmarkindia.com

www.bizmarkindia.com

Builders & Developers



Office Address:

303, Pitra Chhaya, Priyadarshini Nagar,
Raipur(C.G.)

Architect

Vivek Kumar Pandey

Office Address:

104, Commercial Complex Shrishti Palazzo
Avanti Vihar, Raipur (C.G.)

Call: 98261-25600 | **Email:** vkp_65@hotmail.com
