



platinum
corp.

platinum
CASA *Divine*
ANDHERI (W)

A PRECIOUS GIFT FOR YOUR LOVED ONES!

platinum
CASA *Divine*
ANDHERI (W)



WORLD-CLASS GYM FROM

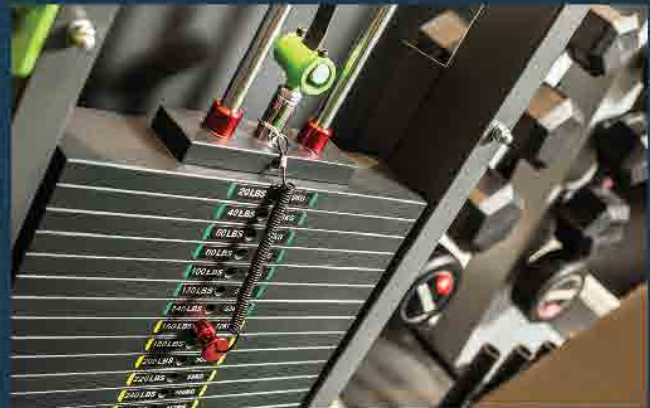
BEING STRONG[™]
FITNESS EQUIPMENT

by

SALMAN KHAN



ACTUAL GYM PHOTOS



PROJECT HIGHLIGHTS:



LAUNDERETTE



FITNESS CENTRE



GROUND
ASSISTANCE



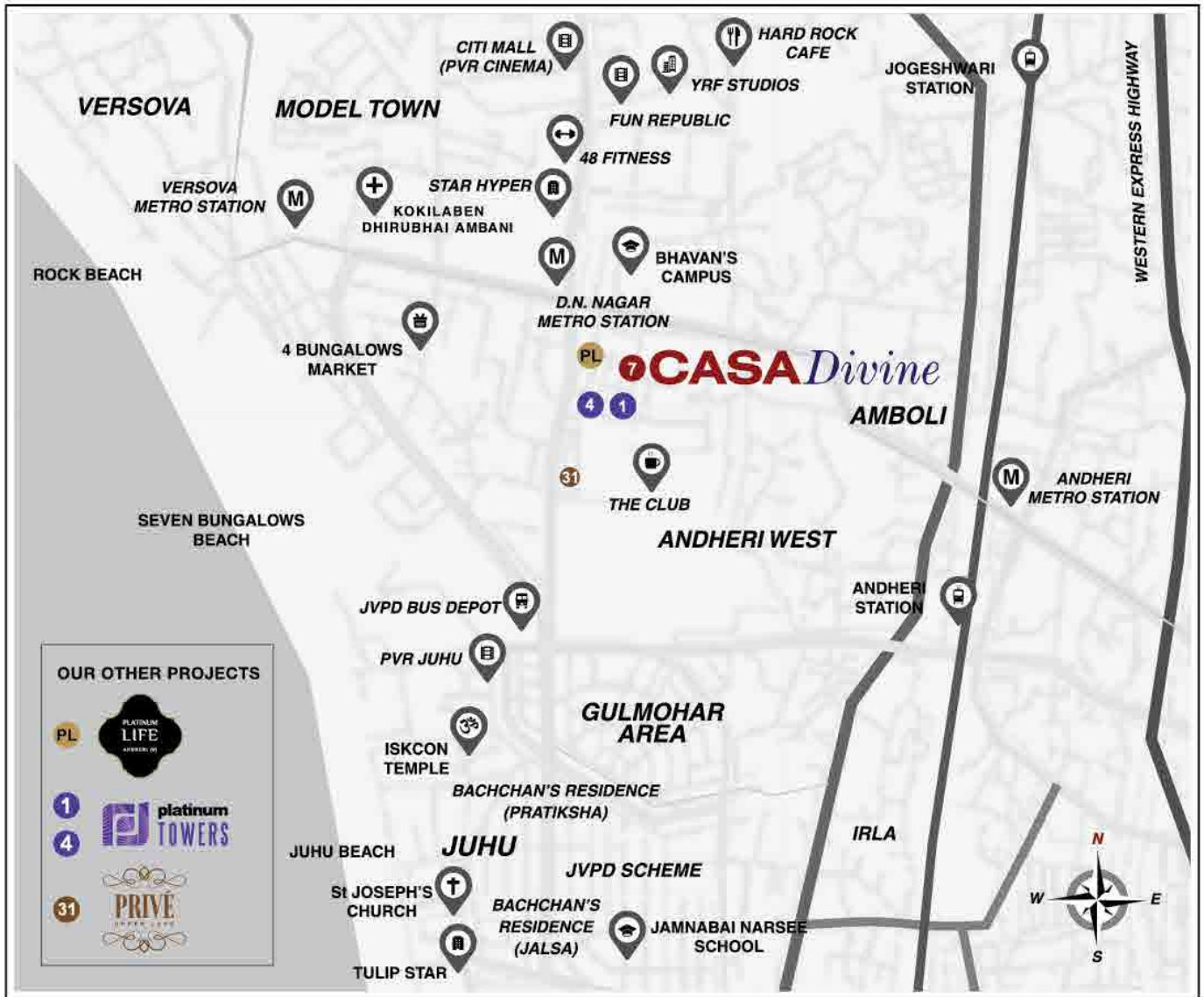
SECURITY
SURVEILLANCE



HOUSE-HOLD
REPAIRS



AUTOMATED
CAR PARKING



CONNECTIVITY

- DN Nagar & Azad Nagar Metros - 2 Mins Walk • Off New Link Road
- Andheri & Vile Parle Stations - 10 Mins • International & Domestic Airports - 15 Mins

LOCATION ADVANTAGES

- The Club & Andheri Sports Club - 5 Mins • Kokilaben Hospital - 5 Mins • Prithvi Theatre - 10 Mins • Infinity Mall - 10 Mins • YRF Studio - 10 Mins • Surrounded by Lounges, Pubs, etc.

A QUALITY LIFESTYLE



COMMON AMENITIES AND FACILITIES FOR THE ENTIRE PROPOSED BUILDING

- RCC framed structure with well-designed Elevation
- Underground Basements with Automated Car Parking system
- RCC Raft Footing
- Well-designed Compound Wall and Entrance Gate
- Well decorated Entrance Lobby
- Decorative paving at Ground Level and Stilt Area
- Mechanical Stack Parking system at Stilt Level
- Passenger Lifts of reputed make
- Well-equipped Gymnasium
- CCTV and Intercom system
- Planters and open-to-air seating at Terrace Level

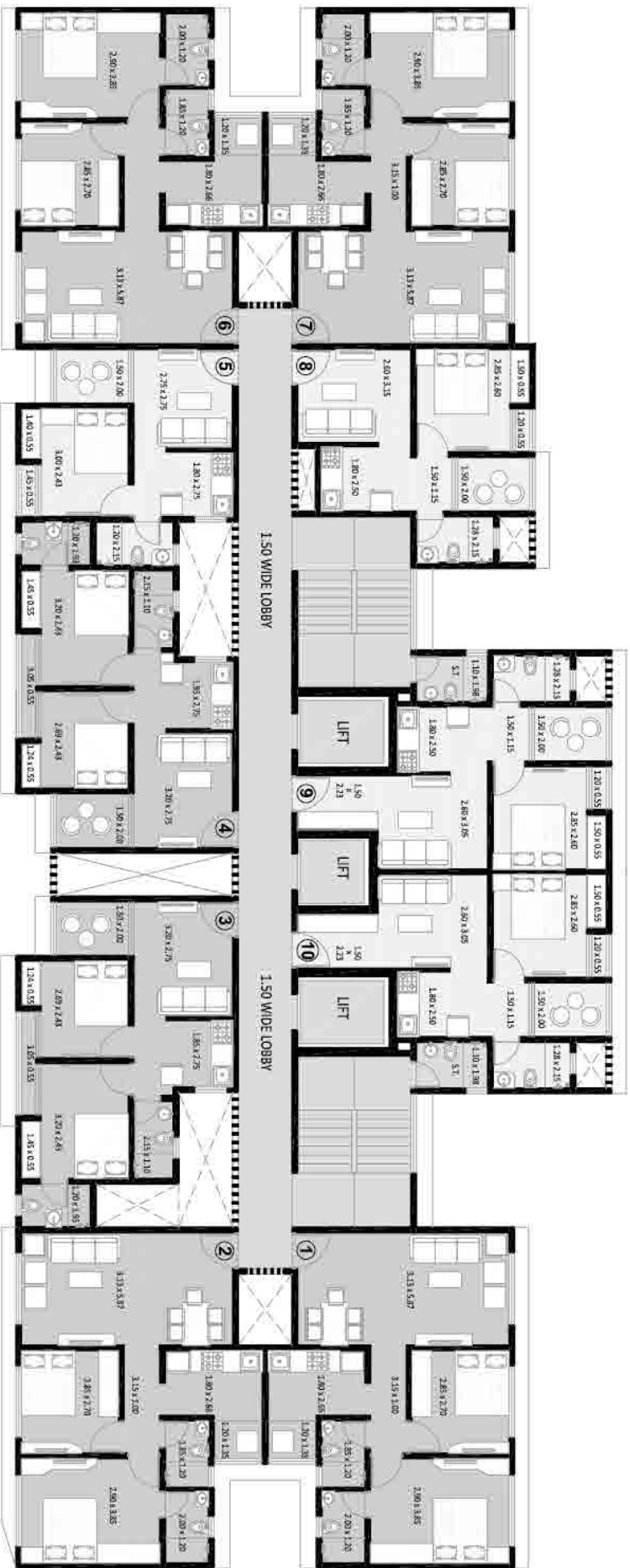
FIXTURES, FITTINGS, AND AMENITIES TO BE PROVIDED INSIDE THE FLATS

- Main entrance flush door with Godrej safety lock and quality branded hardware
- Marble/Granite jambs for bathroom doors and all windows
- Anodized/Powder coated aluminum sliding/louvered windows
- Partial False ceiling with LED lights in Living Room and Bedroom(s) - as per Developer 's design
- Concealed electrical points with MCB/ELCB for extra safety
- High-tech switches with touch/remote (Home Automation range)
- Provision of Telephone and Cable TV points
- POP/Gypsum finished Internal walls with quality paint
- Vitrified/PGVT flooring in all rooms
- Glazed tiles dado in bathroom(s) and kitchen
- Granite cooking/preparation platform in kitchen
- Modular storage cabinets under platform counter and overhead storage shelves in kitchen - as per Developer's design
- Stainless steel sink and 4 burner cooking hob/stove of reputed make in kitchen
- Concealed UPVC/ CPVC/ GI Plumbing
- Provision of water purifier connection in kitchen
- Provision of geyser and exhaust fan connection in bathroom(s)
- European WC, designer glass/ceramic washbasin(s) and C.P. fittings of reputed make in bathroom(s)



TYPICAL FLOOR PLAN

- | | | | |
|---|--------------|---|----------------|
| ① | 2 BHK GRANDE | ⑥ | 2 BHK GRANDE |
| ② | 2 BHK GRANDE | ⑦ | 2 BHK GRANDE |
| ③ | 2 BHK DELUXE | ⑧ | 1 BHK GRANDE |
| ④ | 2 BHK DELUXE | ⑨ | 1 BHK GRANDE + |
| ⑤ | 1 BHK DELUXE | ⑩ | 1 BHK GRANDE + |



platinum
CASA *Divine*
ANDHERI (W)

A Project by:



Call: 808080 6525

Site Office: Platinum CASA Divine, Off J.P. Road, D.N. Nagar, Andheri (W), Mumbai - 400 053



Project is Registered with MahaRERA as Platinum Tower 7.
MahaRERA Reg. No.: P5180000654 | Available at <https://maharera.mahaonline.gov.in>

This project is financed by & mortgaged to ICICI HFC **ICICI**
Home Finance

Commuting time, specifications, furniture, fixtures and visuals are indicative only. You are required to verify all the details, including approvals, areas, amenities, services, terms of sales, payments and other relevant terms independently with Developer's sales team / office, also by physically visiting the project site and from the authorized website of MahaRERA. The project is mortgaged to ICICI Home Finance. We shall obtain and provide No Objection Certificate (NOC) / permissions for sale of the units in the project, if required.