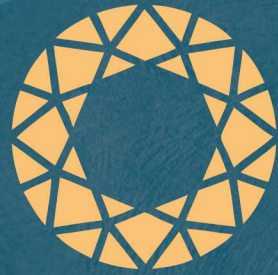


A product by GVT GROUP

PBRERA-SAS79-PR0394



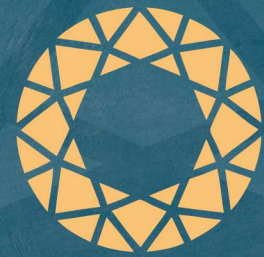
**BELISTON
AVENUE**

Bountiful Luxury for the chosen few.

A SYMBOL of

Awe-inspiring
LUXURY

3/4BHK & PENTHOUSES



BELISTON AVENUE

Bountiful Luxury for the chosen few.

Life is a sequential dream with never-ending desires and fantasies. How about a residential cocoon that wraps all the desirable elements which define a magnificent lifestyle in itself? Enter a world studded with luxury and elegance in every space designed for a deserving lifestyle.





Welcome to



A Symbol of
EXTRAVAGANT LIFESTYLE

A SYMBOL of a Awe-inspiring **L**uxury

3 | 4 BHK & PENTHOUSES

Greetings from Beliston Avenue!

Adding another jewel in Zirakpur's Crown, we welcome you to Beliston Avenue, an address built on the foundation of style, status, and eternal bliss. Here's a world that's waiting to enthrall you with the luxuries of an elite location that's well within reach, topped with the exotic ambiance of greens.



A SYMBOL **M**agnificence
of an enchanting

3 | 4 BHK
& PENTHOUSES



A SYMBOL **P**ossession of a Wishful

3 | 4 BHK
& PENTHOUSES



It has been ages since you have been looking for a home that fits in every aspect of your choices. Be it location, space, budget, quality construction, sophisticated lifestyle, luxury, comfort, urban neighborhood, serene surroundings, and much more. We have packed them all in Beliston Avenue.



A Secured, Gated
Community
of 5 Acres



A Truly
Staggering
Entrance Gate



An Enrapturing
Façade with
2 Sides Open



An Abundance
of Sunshine
and Fresh Air



An Acre of
Lush Green
Landscape



An Extravagant
Clubhouse
(10,000 Sq. ft.)
(approx)



Serene &
Peaceful
Living



Opposite to
Delhi Public
School



Close Proximity
to Markets,
Schools, Hospitals,
Banks, etc.

A SYMBOL of

ERA-DEFINING ARCHITECTURE

This awe-inspiring edifice stands testimony to a seamless blend of advanced engineering solutions and dramatic visual statements. Each feature of the project has an innate magnetism that is sure to attract your senses.

Your address to Beliston Avenue starts with a grand palatial facade followed by the verdant ambiance that leads you to your luxurious abode. The entrance is adorned by a captivating water sculpture ready to fill you with awe as soon as you enter.

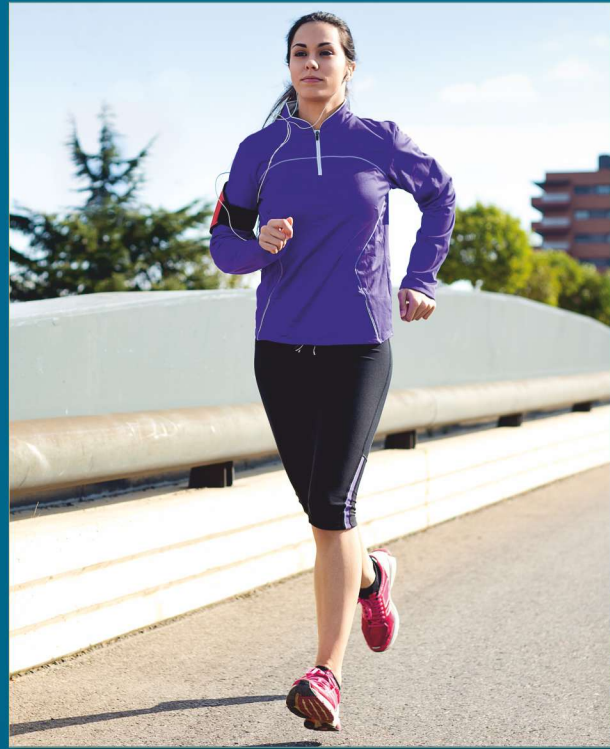
The floor plan is designed to send in vibes that invite the human senses to an opulent and enchanting lifestyle. The 2 Side open spacious apartments let the resident dive in the breathtaking outdoor views creating an illusion of bringing the outdoors in.







A SYMBOL of a Picturesque Landscape



The residences of Beliston Avenue don't mesmerizing charm in them. There is a large, modular kitchen to delight the MasterChef in you. Flanking it, are the ultra-luxe and cozy bedrooms with mesmerizing balcony views to let you enjoy life at its best. Rooms with high beamed ceilings and the thick wall spacing are surrounded by an airy and comfortable aura. These lavishly enriched and effectively priced residences are exclusively woven around your lifestyle needs.

- Spellbinding Views
- An Imposing Welcome Gate
- Breathtaking Water Sculptures
- Manicured Landscapes
- Panoramic Pergola Walkways
- Elegant Element Wall
- Enticing Lush-green Boundary
- Trellis with Lush Foliage
- Tree-lined Boulevards
- Enchanting Water Bodies
- Well-Covered Parking Space
- Rain-water Harvesting System
- Stimulating Space for Yoga
- Serene Gazebo Sitting for Elderly
- Glittering, Well-lit Streets
- 4-tier Security System



There are properties that are beautiful and there are properties that are exquisite. Beliston Avenue belongs to the latter. Heaven is the word to describe its lush green laid-back surroundings. It lies in the center of all things green, colorful, and panoramic. Shivalik hills, colorful flowers, beautiful shrubs, bushy trees, tweeting birds, and manicured gardens are the companions that accompany the residences of Beliston Avenue.

- A Palatial Double-Height Lobby.
- Avant-garde Swimming Pool
- Awe-inspiring Gymnasium
- Exclusive Aerobics room
- Grand Banquet-Hall & Kitchen.
- Tranquil Meditation Room.
- A Lively Kids Activity Room
- Well-stocked First-aid Room
- Sparkling Entertainment Room
- Cozy Card Room for Adults
- A Vast Library
- Expansively Breezy Terrace
- All indoor games like Billiards, Chess, Soccer Table, Table Tennis
- Earthquake-Resistant RCC Framed Structure



A SYMBOL of Enriching Experiences





A SYMBOL of Opulent Interiors

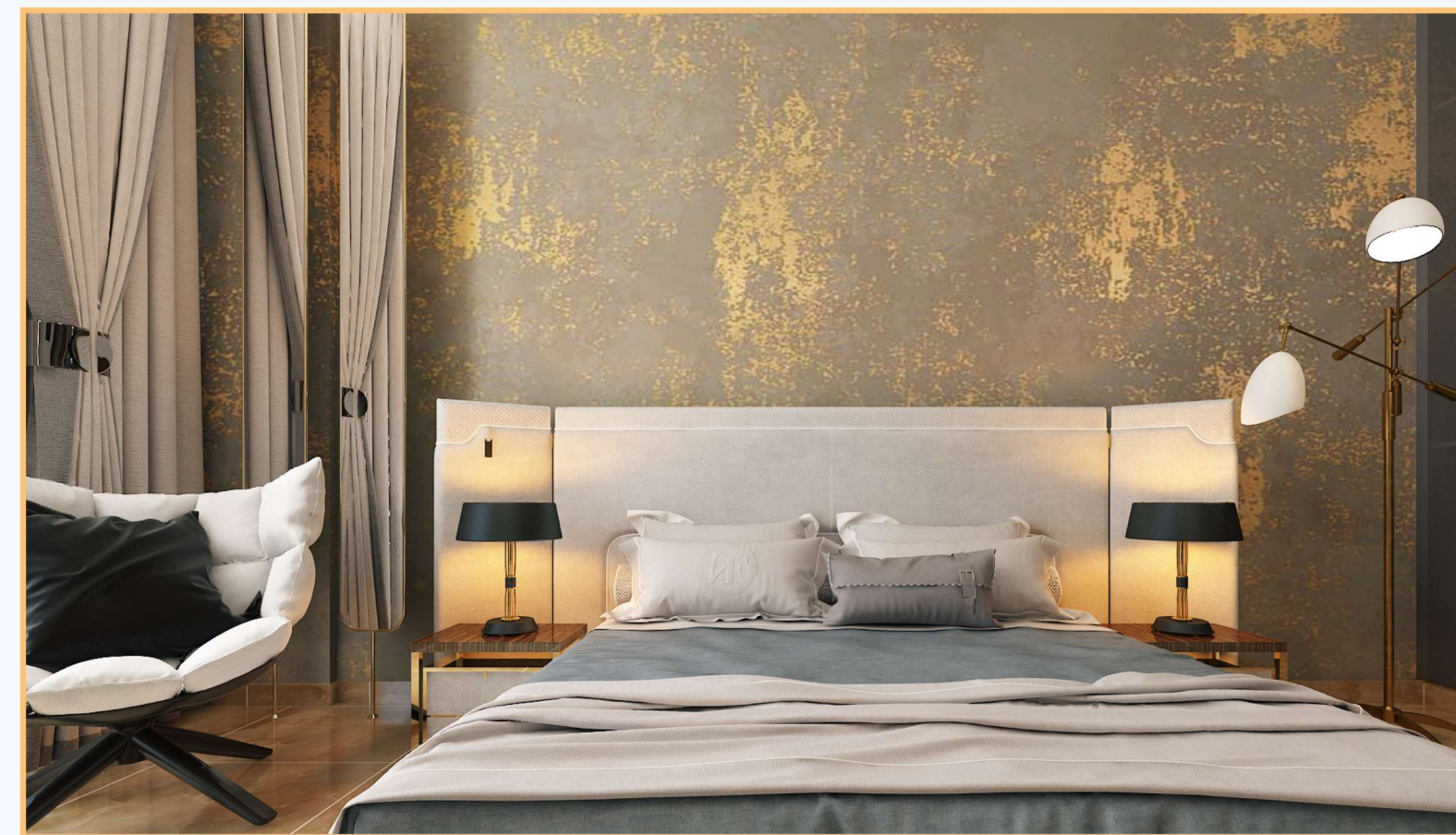
The residences of Beliston Avenue don mesmerizing charm in them. There is a large, modular kitchen to delight the MasterChef in you. Flanking it, are the ultra-luxe and cozy bedrooms with mesmerizing balcony views to let you enjoy life at its best. Rooms with high beamed ceilings and the thick wall spacing are surrounded by an airy and comfortable aura. These lavishly enriched and effectively priced residences are exclusively woven around your lifestyle needs.



R EDEFINING ELEGANCE



The expansive spaces reveal the generous scale and elegant proportions. This elegant eyrie is arguably one of the finest residences, with its classic setting. It radiates an understated elegance and features products that are sourced from our travels across the globe. Producing timeless living spaces with enduring values



The interior designs and decorations give life to a unique layout that is as prestigious as confidential. Truly a portrait of elegant modernity, timeless and trendy, the beliston style asserts itself through mixtures as subtle as harmonious where design and art reveal the comfort as well as the soul of the property.



A PERFECT SETTING FOR YOUR HOME



The interiors are highlighted by the choice of colors, the play of flat tints, and the marriage of raw materials where design furniture, family heirlooms, and art each have their place as well as their functionality. The diversity, originality, and accuracy in the research and selection of a whole range of products make the extravagant place to dwell in.



You can't agree more that it is more than a dramatic update to the classic interiors. One that's genuinely welcoming, warmly livable, highly enviable, and begging to be discovered. The features enfolded here are uniquely patterned that bestow dramatic dimensionality to the new high-rise building.

A SYMBOL of Spellbinding Specifications



ULTRA MODULAR KITCHEN

- Walls - Digital Ceramic Tiles up to 2 ft
- Flooring - Vitrified Best quality tiles
- External Window - UPVC Framed & Shutter / Powder Coated Aluminum
- Switches - Modular (High Quality)
- LPG - Gas pipeline supply
- Others - Granite Counter Top/ Other Superior Material Counter Top With Double Headship Providing Double Stainless Steel Sink



MISCELLANEOUS SPECIFICATIONS

- Structure & Design - Earthquake Resistant RCC Frame Structure
- Lifts - High-speed Lifts by Schindler/Kone/ Otis or Equivalent Brand
- Wi fiConnectivity - High-speed Wi-fi in the Premises*
- Spacious Parking - Covered Car parking
- Internal Wall Finish - Gypsum plaster/ plastic paint on walls & ceiling, POP Cornices in Drawing/Dining /Bedrooms
- Water Supply - Tubewell (Bore)
- Water Storage for Rainwater Harvesting
- Overhead Tanks to Ensure regular Running Water



DOORS/WINDOWS

- Internal Walls - Wooden Doors made with Well-seasoned Hardwood Timber
- External Walls - Windows/ glazing in UPVC / Powder Coated Aluminium
- Power Supply & Backup - 24x7 Power backup up to 3KWH*
- Concealed electrical wiring with fire-resistant copper wires
- Adequate plug points
- Safety & Security - Safety & Security (So you sleep Peacefully)
- 24x7 CCTV with recording & control room
- Latest fire-fighting equipment
- Intercom facility



BREATHING SPACE IN BALCONIES

- Flooring - Anti-skid Tiles
- Switches - Modular
- Others - Designer MS Railings (up to 3.5" -4")



TRENDY PAINTS

- Internal Walls - Acrylic Emulsion Washable paint of Asian /British / Nerolac or Equivalent.
- External Walls - Anti-fungal Weather Shield Paint



SAFE & STYLISH STAIRCASES

- Walls - Acrylic Emulsion Washable paint of Asian /British / Nerolac or Equivalent.
- Flooring - Granite/ Premium Kota Stone / Marble
- External Window - UPVC Frames & Shutters



LAVISH FLOOR DESIGNING

- Flooring - Superior quality Vitrified tiles
- Balconies & Utility Area - Ceramic Tiles
- Others - Anti-skid Ceramic Tile Floor



GLAMOROUS WASHROOMS

- Walls - Acrylic Emulsion Washable Paint & Ceramic Tiles up to 10 ft.
- Flooring - Anti-skid Tiles
- External Window - UPVC Frames & Shutters
- Switches - Modular
- Doors - Wooden Doors made with Well-seasoned Hardwood Timber
- Others - Provision of Geyser Points & Exhaust fans
- Fittings & Fixtures - Finest quality matching Grohe/Jaquar/Duravit or Equivalent

A SYMBOL of Convenient Accessibility

3 | 4 BHK & PENTHOUSES

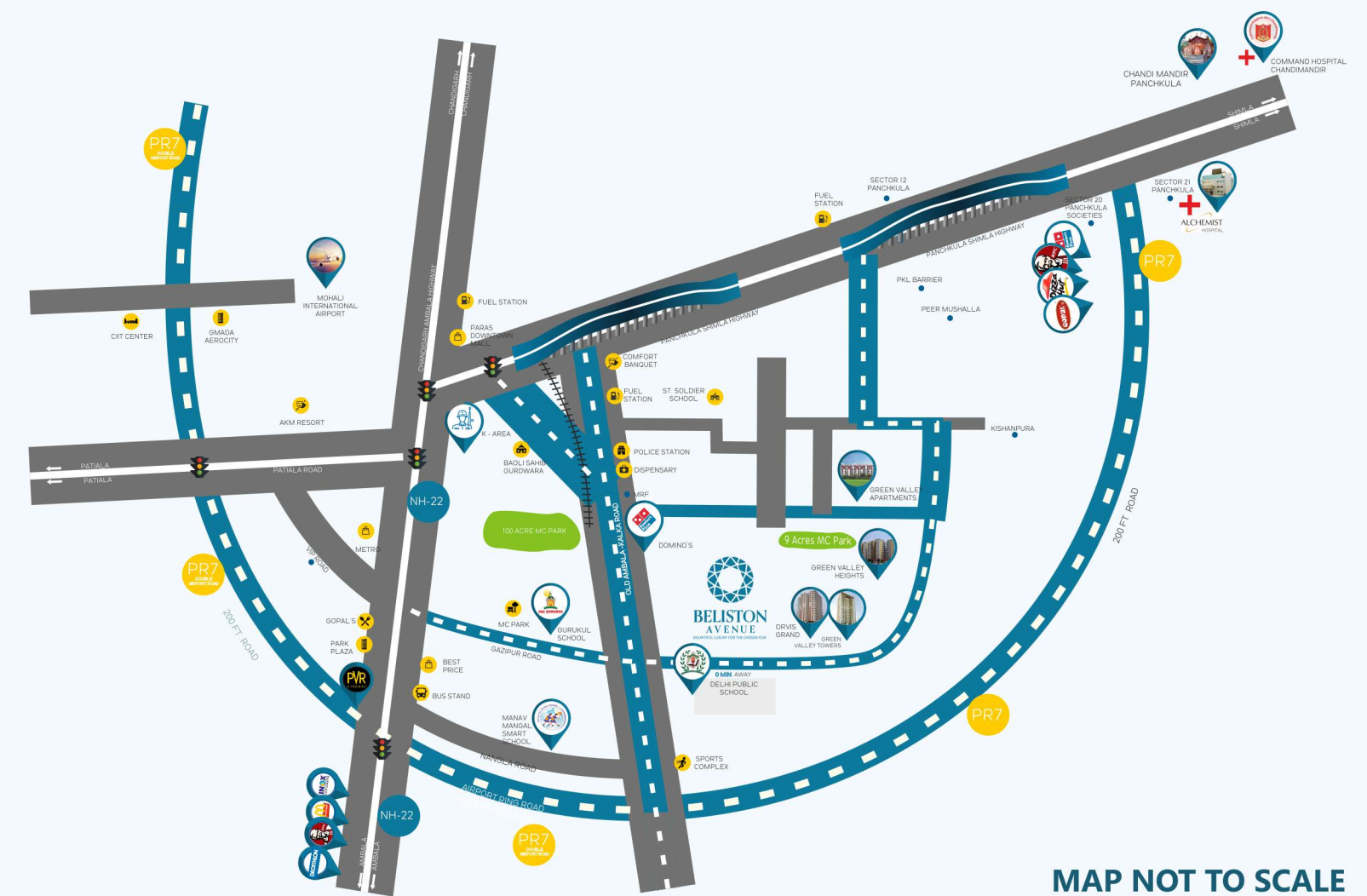
At Beliston Avenue, it is easy to fuel your regular visits to the city's metropolitan culture with convenience. The project is located within short distances to the city's major malls, hospitals, the airport, schools, and other urban connections. It lies opposite to the Delhi Public School.

While you will be spending your everyday life with serenity, there is no way we can take you away from urbanity. The premises of Beliston Avenue are comfortably accessible both for the daily commuters and occasional visitors.

 DPS World School 0 min	 Police Station 3 min	 Dispensary 3 min
 Kalka-Shimla Highway 5 min	 Sec 20 PKL 7 min	 Best Price 10 min
 Paras Downtown Mall 10 min	 Alchemist Hospital 10 min	 Pkl Golf Course 12 min

LOCATION MAP

 Chandimandir 15 Min	 Command Hospital 15 Min	 Railway Station/IT Park 20 min	 International Airport 25 min
---	---	--	--



MAP NOT TO SCALE

3 BHK Floor Plan

Super Built up Area: 1772 Sq ft Approx.



Drawing Area	17'-1.5" X 21'-0"
Kitchen	7'-6" X 11'-1.5"
Balcony	6'-0"
Bedroom 01	11'-0" X 14'-6"
Bedroom 02	10'-6" X 14'-0"
Bedroom 03	12'-0" X 12'-0"

4 BHK Floor Plan

Super Built up Area: 2281 Sq ft Approx.



Drawing Area	18'-6" X 14'-4.5"
Dining Area	10'-0" X 17'-6"
Kitchen	11'-6" X 8'-9"
Balcony	6'-0"
Bedroom 01	11'-0" X 14'-0"
Bedroom 02	15'-0" X 12'-0"
Bedroom 03	14'-6" X 11'-0"
Bedroom 04	12'-0" X 10'-0"

PENTHOUSE FLOOR PLAN



LOWER FLOOR PLAN

Super Built up Area: 3135 Sq. ft. Approx.

Drawing Area	17'-1.5" X 21'-0"
Kitchen	12'-0" X 12'-0"
Balcony	6'-0"
Bedroom 01	11'-0" X 14'-6"
Bedroom 02	12'-0" X 14'-6"



UPPER FLOOR PLAN

Super Built up Area: 3135 Sq. ft. Approx.

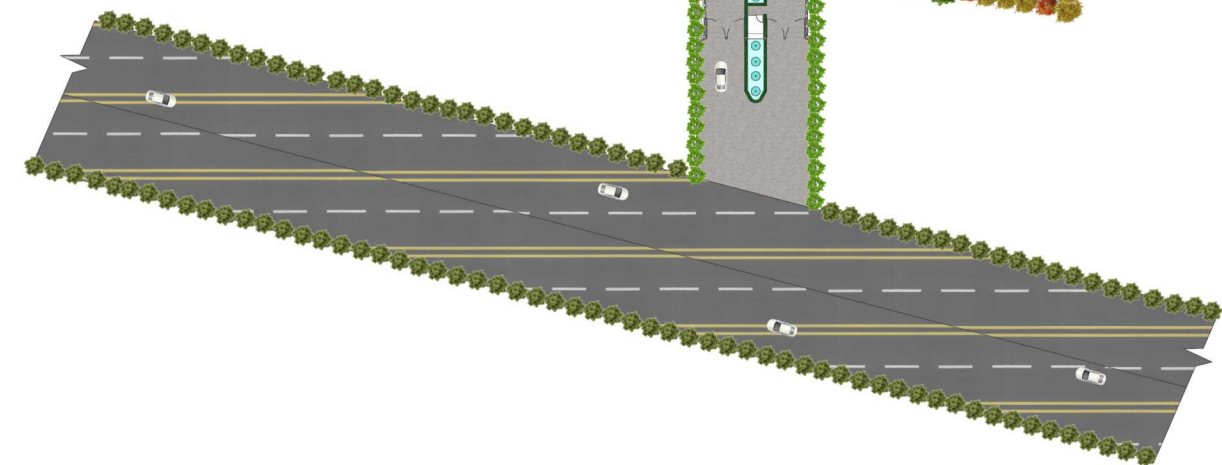
Lobby	10'-1.5" X 6'-0"
Balcony	6'-0"
Bedroom 01	11'-0" X 14'-6"
Bedroom 02	12'-0" X 14'-6"



SITE PLAN



- LEGEND**
1. DRIVEWAY/ DROP OFF
 2. ELEMENT WALL
 3. YOGA & MEDITATION AREA
 4. GAZEBO SITTING
 5. HERBAL GARDEN
 6. GREEN GRAND LAWN
 7. STEP LANDSCAPE
 8. SENIOR CITIZENS AREA
 9. DECK/ SCULPTURE AREA
 10. KIDS PLAY AREA WITH PLAY BOX
 11. TRELIS WITH GREEN
 12. FAMILY POOL
 13. KIDS POOL
 14. CENTER GAZEBO SITTING
 15. CLUB
 16. EXOTIC TREES AREA
 17. PERGOLA
 18. STEP SITTINGS
 19. ELDER SITTING AREA
- S+6/PENT HOUSE
 S+7
 S+10





A SYMBOL OF *Trust, Commitment & Quality*

We are happy to offer you residential happiness backed with quality, trust, and years of unwavering commitment. Every square inch of our construction is a testament to years of our professional experience and expertise. We follow strong work ethics giving attention to every minute detail in the real-estate development zone. We build our projects keeping in mind all your necessities topped with your preferences. Our projects are accentuated with wow factors to add that perfect touch of luxury and comfort packed together.



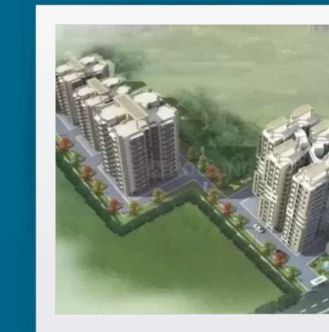
Other Esteemed Projects from the House of GVT

Due to its prime location and a promise of bountiful luxury that's well within reach, Beliston Avenue is bound to become the most sought-after project in Tri-city.

Come home to Beliston Avenue & feel the difference



ORVIS GRAND
Delivered



**GREEN VALLEY
TOWERS**
Delivered



**GREEN VALLEY
HEIGHTS**
Delivered



**GREEN VALLEY
APARTMENTS DHAKOLI**
Delivered



BELISTON AVENUE

Bountiful Luxury for the chosen few.

CORPORATE OFFICE:

📍 **Old Kalka Road, Opp. Delhi Public
World School, Gazipur, MC Zirakpur
Distt. Mohali 160104.**

📞 **+91 98555 73332**

✉ **sales@thebelistonavenue.com**

🌐 **www.thebelistonavenue.com**

Disclaimer:- Information, images or sketches shown in this billboard/ representation are indicative only and are architect's impression of the envisaged and the same are subject to change as may be necessary at the time of construction over the plots allotted to buyers.