

KALPATARU
VIENTA
KANDIVALI [E]

LIVE THE MAXIMIZED LIFE



Representational Image

Discover the island of luxury in the island city.

The bustling landscape of Kandivali has the advantage of connectivity with quaint and green residential belts. A myriad of shopping malls and entertainment hubs stay true to the cosmopolitan spirit. Important roadways and railways at close quarters with the upcoming Metro-Phase 2 makes every commute hassle-free. Kalpataru Vienta enshrines this serene yet well-connected locale for you to bask in the comforts of exemplary living.



Exclusiveness. In name and spirit.

Magnificent greens. Breathtaking views. Lavish homes. Bountiful avenues of recreation. Introducing Kalpataru Vienta. Strategically located in the green locale of Kandivali (E), this premium residential complex with twin residential towers offer luxury 2, 3 & 4 BHK homes. With the vision of providing luxurious living amidst magnificent greens, every facet of the project, be it the location, the design sensibilities or the open spaces, is crafted to maximize the residents' lifestyle.

> Highlights

- > Twin residential towers
- > Spacious 2, 3 & 4 BHK apartments
- > Lavish club facilities
- > Gymnasium with state-of-the-art facilities
- > Adjacent to Kandivali East-West flyover
- > Close to upcoming Metro Phase 2

Stay connected to everything.

 **03** mins to a movie

 **11** mins to shopping

 **01** min to worship

 **14** mins to fitness



^{5A}Source: Google Maps

All round connectivity.

Located strategically next to Kandivali East-West flyover, Kalpataru Vienta offers the best of both worlds. It connects well to the conveniences of the city & at the same time disconnects from the chaos of it.



A world of convenience.

> Schools

- > Children's Academy - 3 mins
- > Thakur International School - 8 mins
- > Orchids - The International School - 8 mins
- > Ryan International School - 12 mins

> Malls

- > Growels 101 - 9 mins
- > Inorbit Mall - 16 mins
- > Infiniti 2 Mall - 12 mins
- > Oberoi Mall - 14 mins

> Hospitals

- > ESIC hospital - 6 mins
- > Sanchaiti hospital - 10 mins
- > Namaha hospital - 2 mins

> Banks

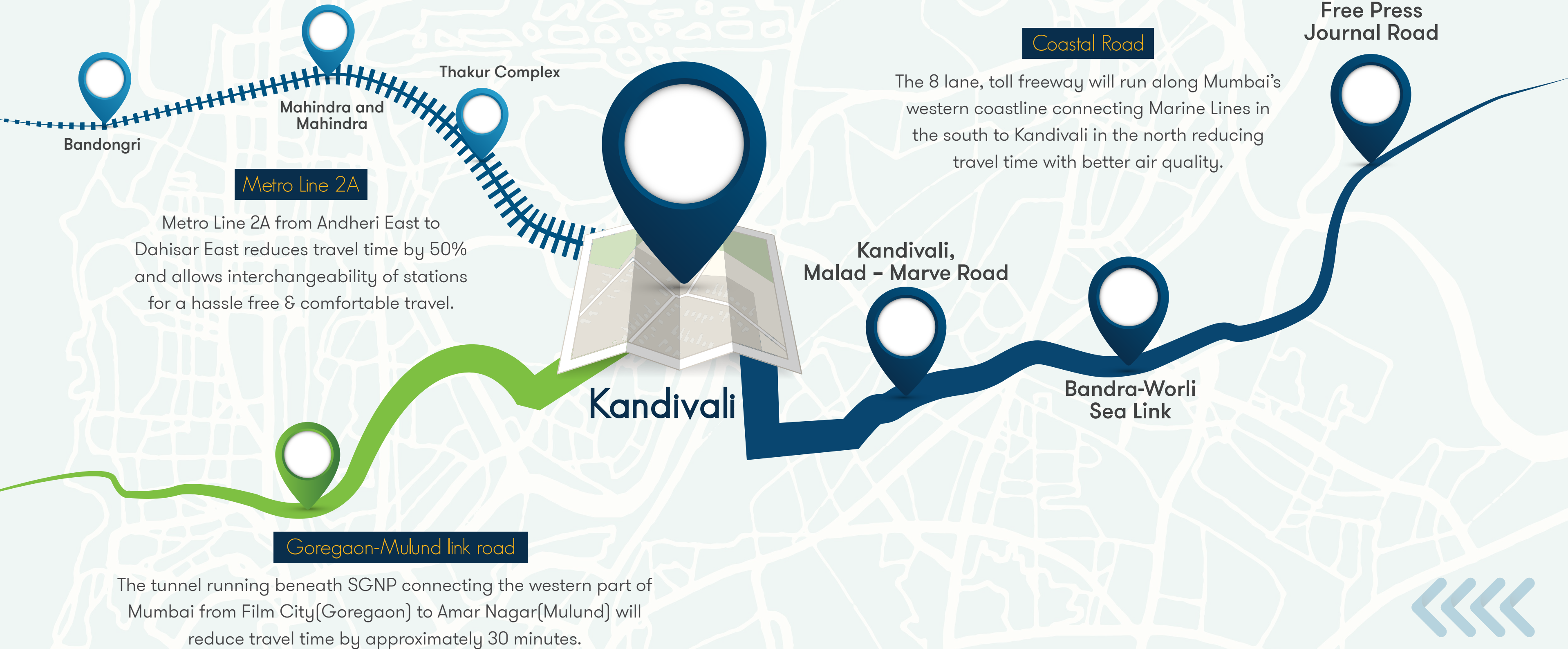
- > Dena Bank - 4 mins
- > Axis Bank - 8 mins
- > Bank of Baroda - 4 mins

> Jain Temples

- > Shri Shankheshwar Parshwanath Jain Temple - 7 mins
- > Vijapur Jain Temple - 5 mins



Time travel to the future.



Redefining the skyline of Western suburbs.

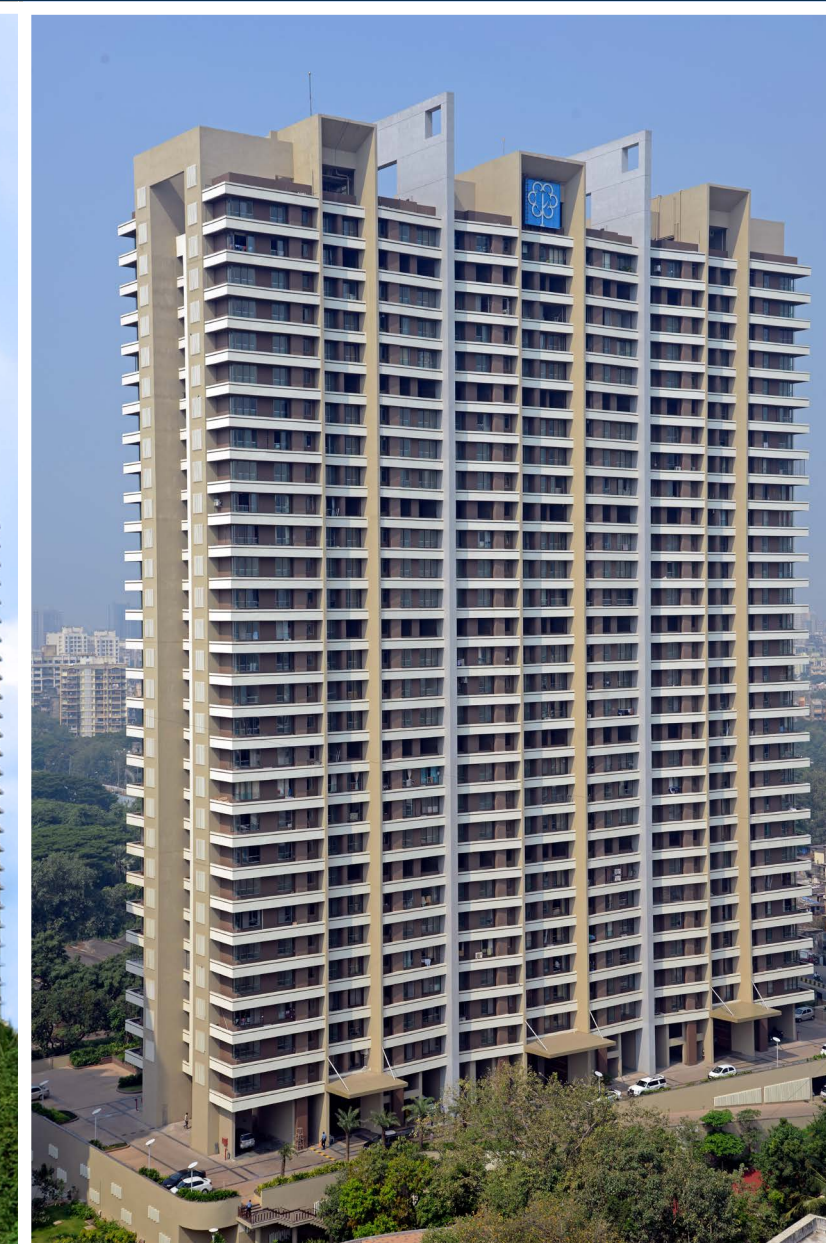
Kalpataru has several landmark projects to its credit that have crafted the skyline of western suburbs of Mumbai. Apart from providing an upgraded lifestyle to the residents, we can proudly say that these developments are known to have enhanced the locational value of the areas and turned them into preferred living destinations.



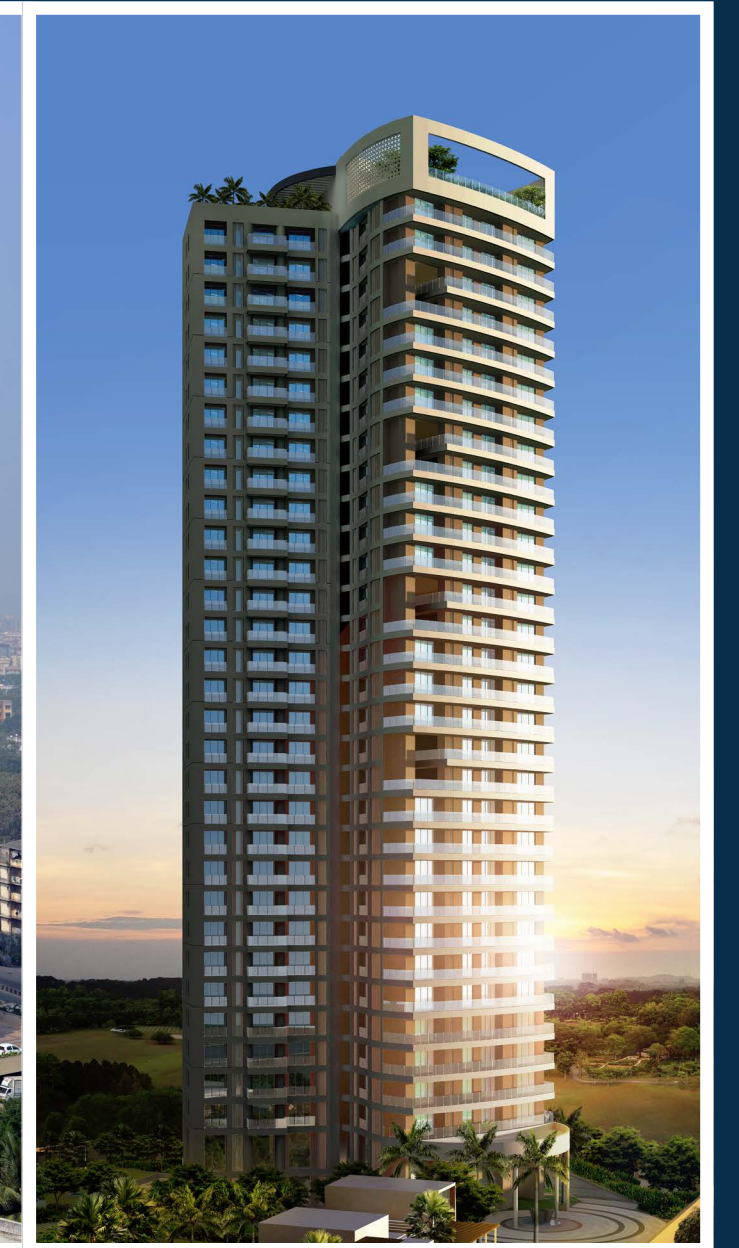
Kalpataru Estate
JVLR



Kalpataru Towers
Kandivali East



Kalpataru Gardens
Kandivali East



Kalpataru Pinnacle
Goregaon West





Representational Image

Discover endless avenues of recreation.

Kalpataru Vienta houses a host of club facilities with large community zones to promote holistic health & well-being of the residents. From plush gymnasium to a soothing spa, it offers something for everyone in the family.

- › Lavish club facilities for all age-groups
- › Maximum open spaces within the complex
- › Landscaped pedestrian friendly eco-deck area
- › Various recreational facilities:
 - Fitness
 - Leisure
 - Sports
 - Community
 - Kids

Membership to a lifetime of privileges.

1. Health



Spa



Yoga / Meditation room



Gymnasium with state-of-the-art facilities



Family pool with therapeutic loungers, Kids' pool and fitness pool



Jogging Tread

2. Leisure



The Centroid
- Celebration Hub,
Dusk lounge,
Tiered seating



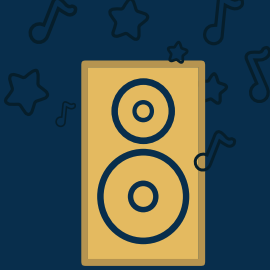
Mini theatre



Club Facilities
- Party deck, BBQ



Lounge



Party hall with pantry & store

3. Sports



Somersault
- Kids' square, Organic park,
Grandparent's Nook,
Tree pod and Adventure play



Indoor Badminton court



Multipurpose Sports court



Squash court



Live the maximized life.

01



Ready-to-live neighborhood

With everything at an arm's distance, the location offers an unmatched lifestyle with great connectivity.

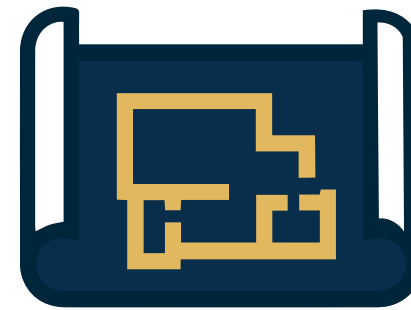
02



Exclusivity

Two exclusive towers, fewer apartments with grand greens gives every home a story of its own. The balconies provide breathtaking views making everyday a heyday.

03



Meticulous planning

Every apartment has been planned keeping circulation, ventilation and a happy family in mind promising to provide you the worth for every square feet you buy.

04



All-rounder life

Name an amenity and it is here. Start your day with a sunny jog at the jogging tread and end your day with a glorious jump in the swimming pool.





50

YEARS OF
BUILDING TRUST

MORE THAN
105

LANDMARK PROJECTS
& STILL GROWING

OVER
21

MILLION SQ.FT.
OF DELIVERED AREA

17,500

HAPPY
FAMILIES

A compelling opportunity by the most trusted brand

Kalpataru Limited is the flagship real estate company of the Kalpataru Group. Since its inception in 1969, under the aegis of Mr. Mofatraj Munot, the Kalpataru Group has grown from one milestone to another. Today, having completed 50 glorious years with 105 landmark projects the group's marvellous journey is only getting started, and is bound to reach great heights.



Head Office: 101, Kalpataru Synergy, Opp. Grand Hyatt, Santacruz (E), Mumbai - 400 055, India.

Site address: Kalpataru Vienta, Off Ashok Nagar Main Road, Near Kalpataru Gardens Phase 2, Kandivali (E), Mumbai – 400101

Tel: +91 22 3064 3065 | **Fax:** +91 22 3064 3131 | **Email:** sales@kalpataru.com | **Website:** www.kalpataru.com

MAHARERA Registration Number P51800023768. Details available at <https://maharera.mahaonline.gov.in/>

All image/s are strictly for representational purposes. The specifications, pictures, images, aesthetics, features, views, amenities, facilities and surroundings shown / mentioned are only for representational, illustrational and indicative purpose, and the terms of the agreement for sale (if any) if entered into by parties will solely govern, control and prevail. Features, fixtures, fittings, goods, accessories and furniture reflected / displayed in images are strictly for illustrative and representational purposes only and are not part of the standard final amenities & finishes and the actual amenities will vary in planning and upon actual construction. Prospective customers are requested to refer to the sanctioned plans for further information for the phase or visit <https://maharera.mahaonline.gov.in/> for further details. | The property is secured with JM Financial Credit Solutions Limited & the No Objection Certificate / Permission would be issued at the relevant time, if required. Conditions apply. ^{5A}Google maps as on January 2020