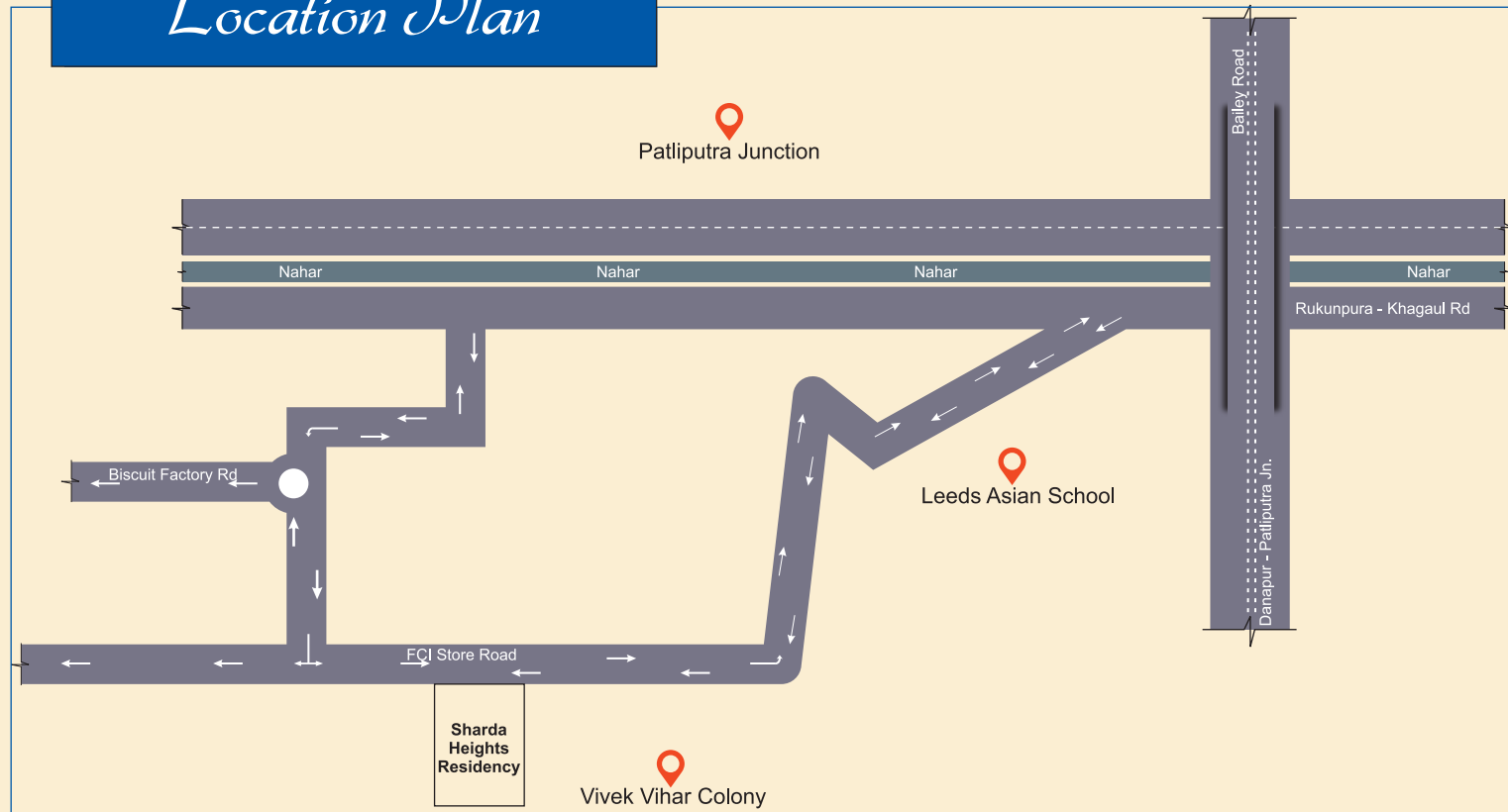


Location Plan



Distance from Project

Major Spot	Distance
Patliputra Junction	- 0.7 KM
Danapur Junction	- 6.0 KM
Phulwari Junction	- 7.0 KM
Airport	- 6.0 KM
Education Hub	
Leed Asina School	- 1.0 KM
St. Karen's High School	- 0.8 KM
sG.D.Goenka Public School	- 5.0 KM
Radiant international School	- 0.8 KM
J.D Women College	- 5.5 KM
Health	
AIIMS Hospital	- 7.0 KM
Paras Hospital	- 4.0 KM
IGIMS Hospital	- 5.0 KM
Park	
Golf Club	- 5.5 KM
Zoo	- 6.0 KM
Eco park	- 7.5 KM

Logo

Address

Trimurty K.b Raj Housing Cnstruction Pvt.ltd
Gabh Tal, Akhada Road, Danapur, patna

Contact :

Email :

Web. :



Architect
S P & Associates

204, Maharaja Kameshwar Complex,
Frazer Road, Frazer Road, Patna - 800001
Opp. Budhha Park
Mobile : +91 9431019653, 8544393003,

Note : All the building plans, layouts, specification etc. are tentative and subject to variation and modification as may be decided by the architect / company. Accessories shown in the layout plan of the bungalow / flats such as photo, picture, scene furniture, electric appliances etc purely indicated and not a part of the sale offerings

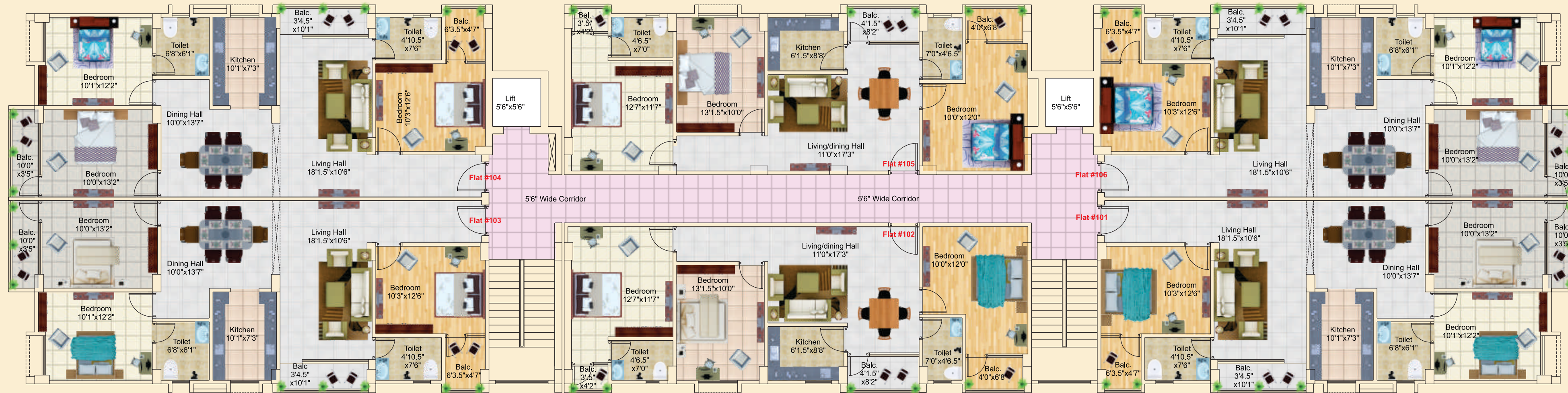
Sharda Heights Residency

Shajadpur, Danapur, Patna



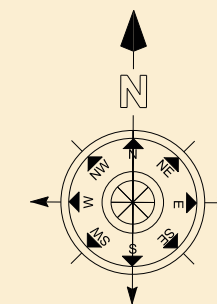
Design & Print : www.atlasstudio.in / 09939038209

Typical Floor Plan

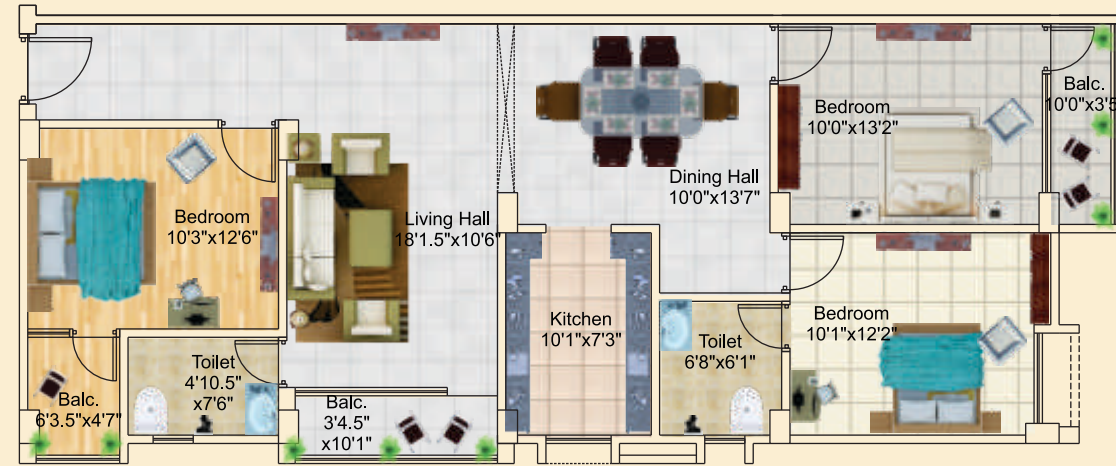
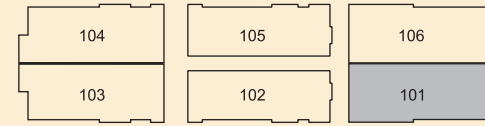


Area Statement

101 3 BHK	102 3 BHK	103 3 BHK	104 3 BHK	105 3 BHK	106 3 BHK
1430 Sq.ft	1254 Sq.ft	1430 Sq.ft	1430 Sq.ft	1254 Sq.ft	1430 Sq.ft



Flat No-101

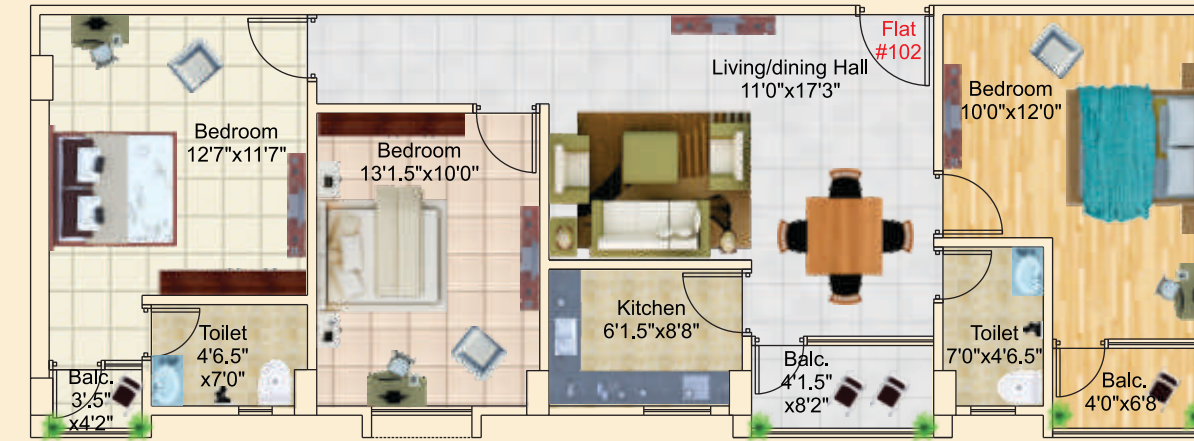
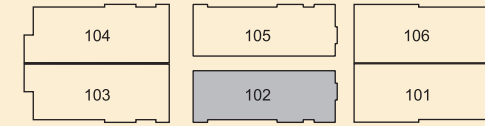


101,103,104,106 | 3 Bhk | 1430 Sft



Conceptual View

Flat No-102



102,105 | 3 Bhk | 1430 Sft



Conceptual View

Specifications

Structure

- Earthquake Resistant RCC Framework Structure
- **General**
- Two High Speed automatic Lifts of Reputed Make
- with Lift Cladding

Flooring

- All Lobbies and Staircases Finish
- Vitrified Tiles Flooring (2'x2') in entire flat
- Anti Skid Ceramic Tiles in Balconies & wet areas

Kitchen

- Black Granite Counter with Stainless Steel Sink
- Designer Ceramic Tiles upto ceiling above Kitchen Platform
- Kota Flooring & Ceramic Dado Utility

Toilets

- Anti Skid Ceramic Tiles for flooring
- Standard Quality Sanitary & Plumbing Fittings
- Designer Ceramic Tiles upto ceiling on walls
- Ceramic Washbasins with Granite Counters

Wall Finish & Painting

- Smoothe Plaster on Inside walls
- External Walls with premium weather resistant paint
- Fully Putty on Internal walls & Acrylic Emulsion Paint
- Enamel paint on Railings

Doors & Windows

- Anodized Aluminum Sliding windows with natural stone Frame
- Main Door With polished Decorative veneer
- Good Quality Laminated Internal Doors
- Sun reflective branded glass in all windows



Electrical

- Concealed Electrical wiring with PVC Insulation
- AC Point in each bedroom
- TV & Telephone Points in all Bedrooms & Living Area
- MCB Protected Electrification for each flat
- Modular Switches & Plates. Fire Resistant Copper wires of 'Anchor'
- or equivalent Brands

Plumbing

- CPVC Pives for water Supply
- UPVC Pipes for Dranage

Other

- Gated Community with 24 Hours Security
- Intercom Facility for Authorized Entry Control
- Uninterrupted water Supply through own Borewell & Municipal Supply
- Well Planned maintenance system for hassle - free living

Payment Schedule

At the time of booking	- 05%
After booking within 30 days	- 20%
On start of Foundation	- 10%
On start of ground floor slab	- 10%
On start of first floor slab	- 10%
On start of second floor slab	- 10%
On start of third floor slab	- 10%
On start of fourth floor slab	- 10%
On start of fifth floor slab	- 10%
On time of possession	- 05%

★ Other Miscellaneous Charges - As Applicable

Comman Aminities

Lift



Security



CCTV



Intercom facility



Reserve parking



Water Supply & Drainage



Maintenance Staff



Power Back up

