

# **NILAYA**

APARTMENTS

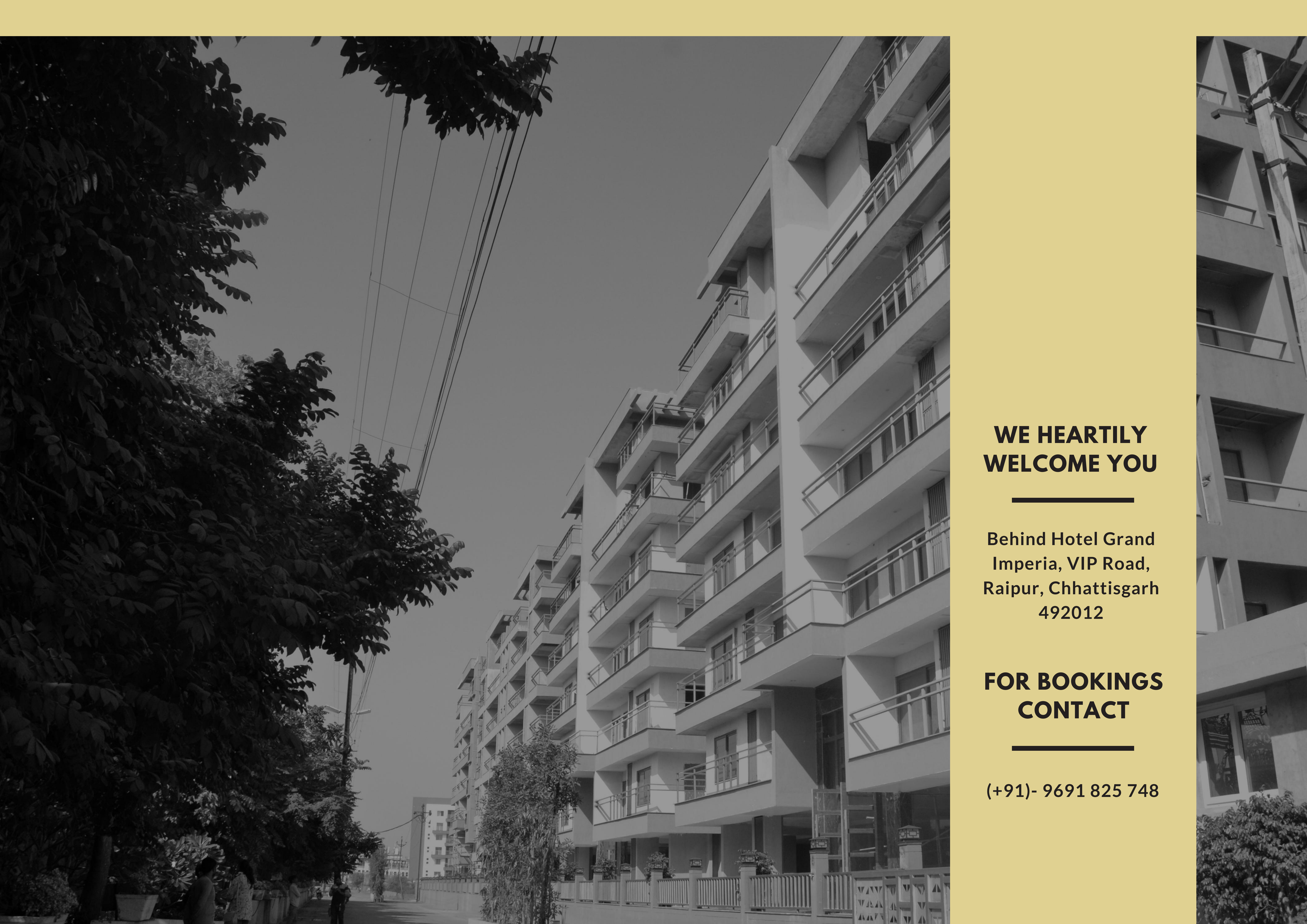
**RESIDING HERE  
IS REGAL LIVING**

---

An Exclusive  
Residential Concept

RERA NO.  
PCGRERA2006  
18000259





**WE HEARTILY  
WELCOME YOU**

---

Behind Hotel Grand  
Imperia, VIP Road,  
Raipur, Chhattisgarh  
492012

**FOR BOOKINGS  
CONTACT**

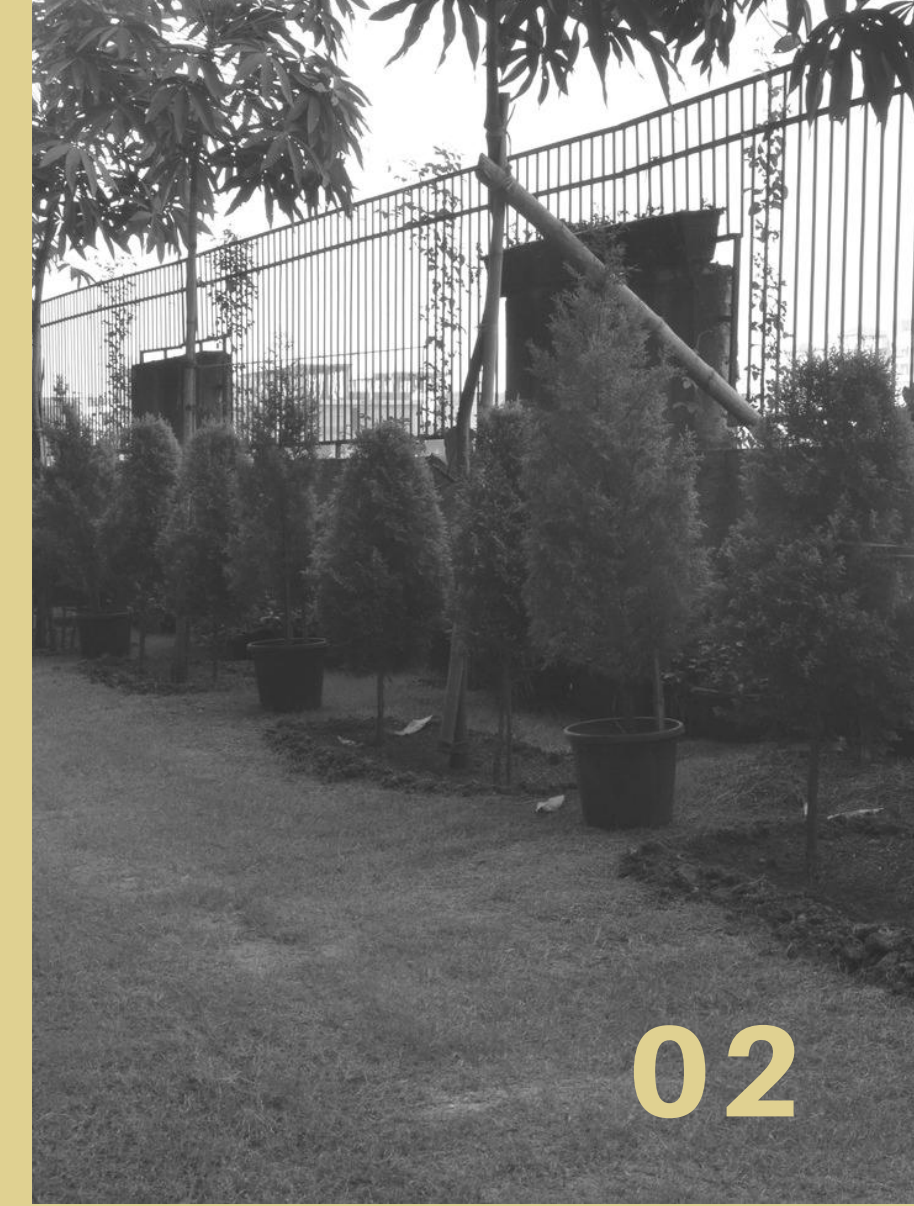
---

(+91)- 9691 825 748



# NILAYA

APARTMENTS



RERA NO.  
PCGRERA200618000259



It is truly wonderful to even think of a residence which is easily accessible but is far away from the hustle-bustle of the city. Nilaya Apartments is a unique creation that offers a splendid blend of breathing amidst international settings yet in a highly balanced fashion.

The visionaries behind the concept desired to bring architectural marvel and inspiring designing with a rock-solid foundation implemented with the latest techniques, technologies, and tools.



Every corner of the luxurious 3 BHK and 4 BHK apartments narrate an evident saga of tireless efforts made day-in and day-out to make this notion a tangible reality. It is not simply exteriors; the quality of materials used, the latest technology employed, and brains exhausted are of highest and finest standards. We have successfully attempted to bring a cozy, comfortable home of choice beyond your imagination. We heartily welcome you to pay us a visit to believe in every syllable that we have expressed.



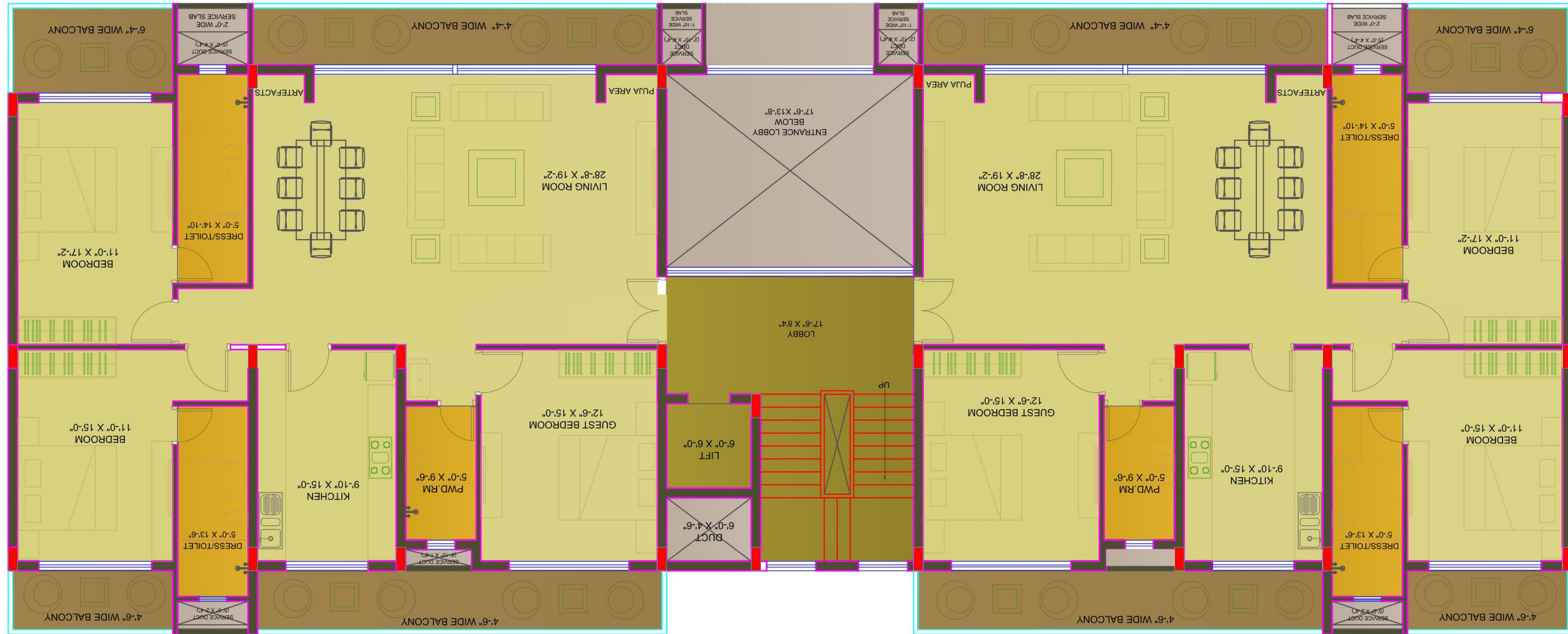
## A & B BLOCK FLOOR PLAN

1st Floor



## A & B BLOCK FLOOR PLAN

2nd, 3rd, 4th & 5th Floor



## C BLOCK FLOOR PLAN



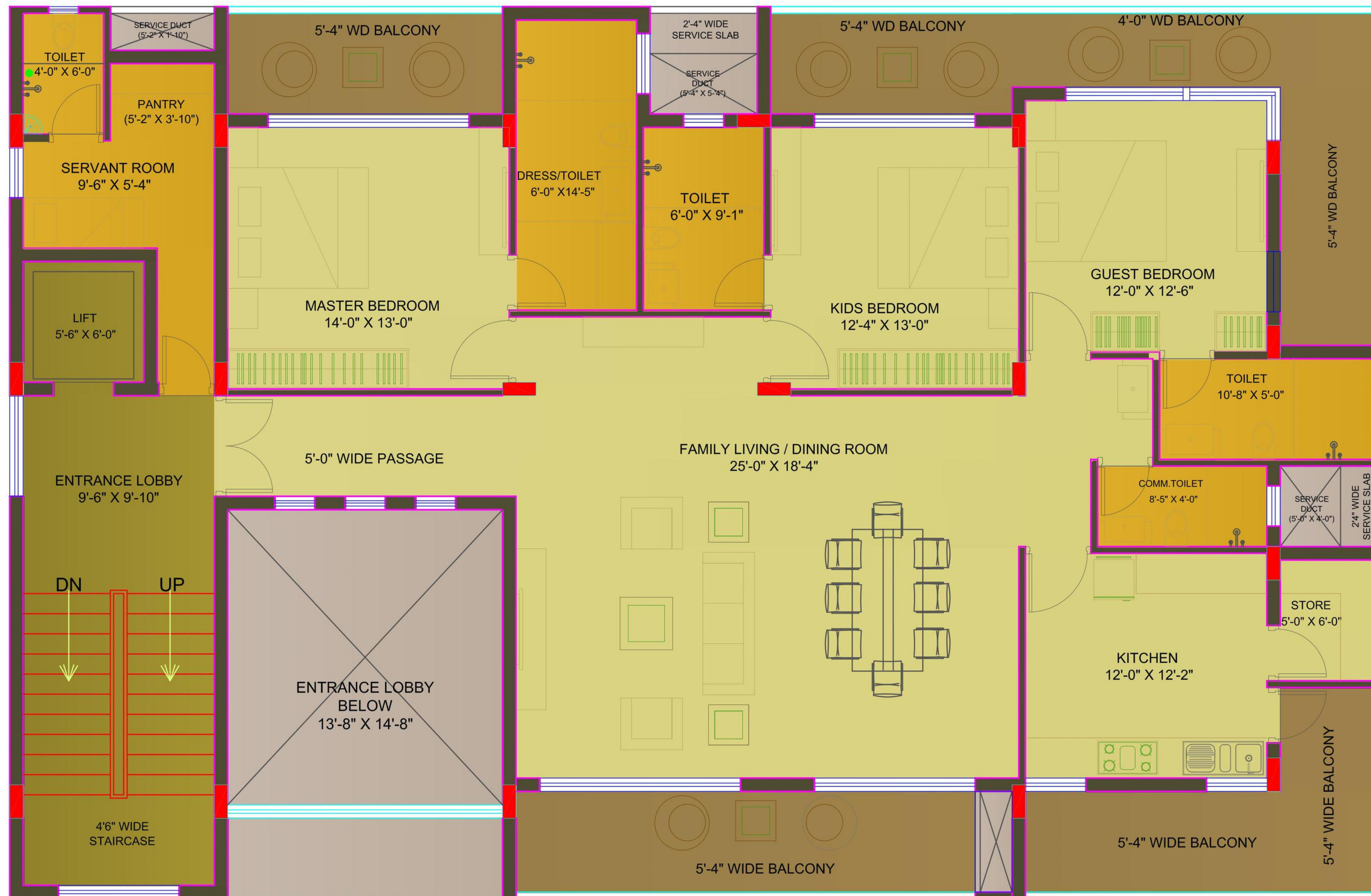
1st Floor



## C BLOCK FLOOR PLAN

2nd, 3rd, 4th & 5th Floor





## D BLOCK FLOOR PLAN



1st Floor



## D BLOCK FLOOR PLAN

2nd, 3rd, 4th & 5th Floor



## QUALITY IN EVERY DETAIL

Doors- The entrance door is made of teakwood frames with ply shutters and veneer finish. The quality of hinges, tower bolt, lock and security eye are of highest standards. The other doors of the home are laminated flush doors that add a beautiful tinge to the overall look and feel.

Windows- The windows have been kept sliding and full-sized They are made of powder-coated aluminium and UPVC braced with toughened glass.

Wall Finish- White premier wall with the POP can be seen in the homes that add a regal look. The living room has imported stone featured wall which makes the home look truly magnificent.



Floor Finish-The tiles and marble used for floor finishing gives an elegant touch to the entire home. We have used Italian Marble in beige color in Living Room, Dining space and Kitchen whereas ceramic tiles are used in children's bedroom and guest room. Anti-skid ceramic tiles are used in bathrooms and balcony.

Sanitary Fittings-The sanitary fittings in toilets comprise of granite counter top with one under counter wash hand basin which is white in color, one health faucet along with bath/shower mixer and shower head. The kitchen sink is a single bowl sink made up of stainless steel. It looks classic in a true sense.

**IT IS NOT SIMPLY THE EXTERIORS, LOOK & FEEL THAT WE HAVE PAID OUR ATTENTION TO. EACH AND EVERY CORNER HAS BEEN DEALT WITH EXTREME CARE.**





# AMENITIES

## BUILDING FEATURES

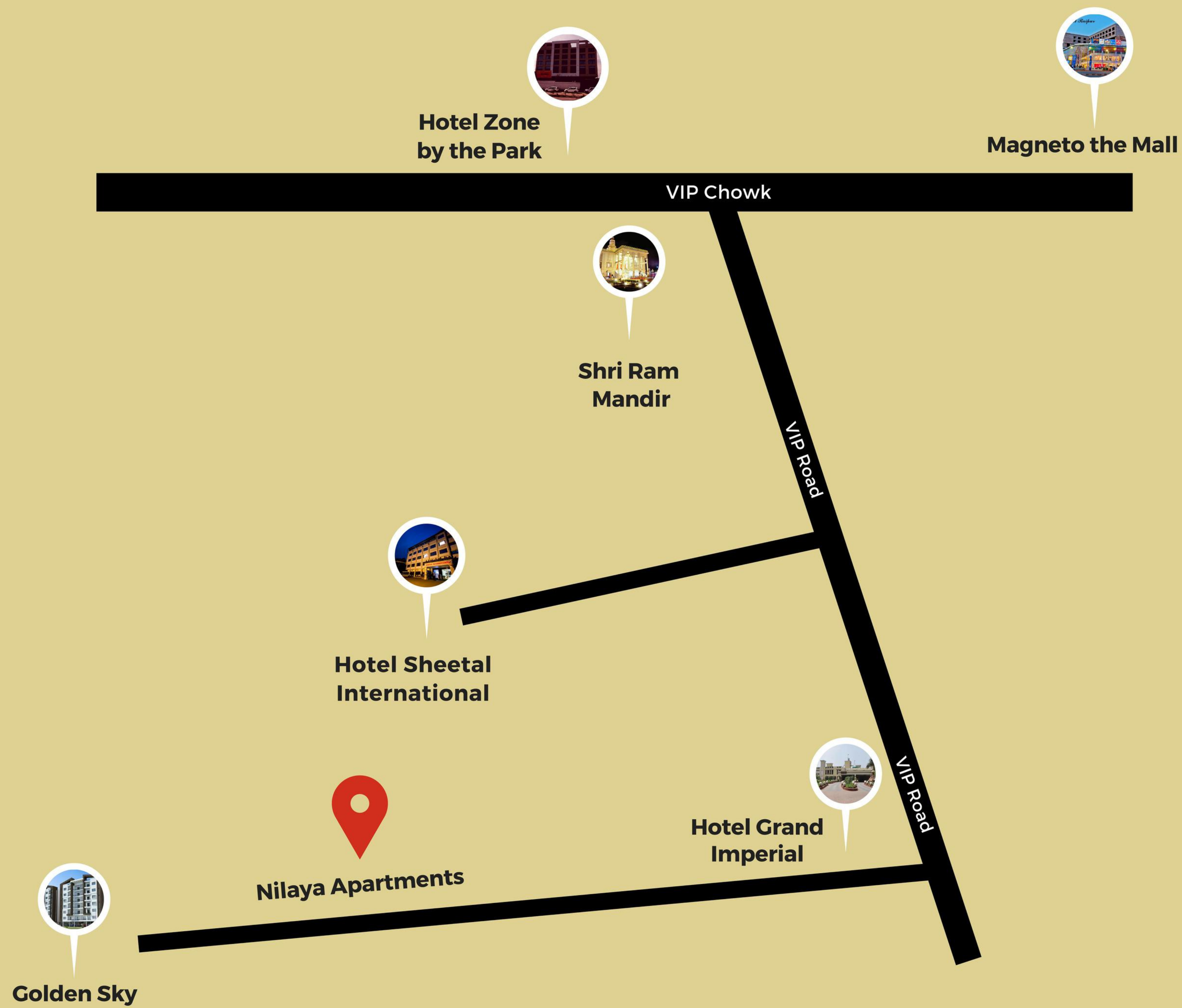
- Double Height Entrance Lobby
- Beautiful Landscape Garden
- 1 High-speed Elevator in each Block
- Well Paved internal roads
- Power Back Up (Common Area)
- Car Parking & two wheeler parking

## CLUB HOUSE AMENITIES

- Mini Theatre
- Gymnasium
- Temple
- Party Lawn
- Club House

## CLUB HOUSE AMENITIES

- Intercom System
- CCTV



# CONNECTIVITY

Railway Station	5.7 km
Raipur Airport	8.2 km
Magneto The Mall	1.9 km
Ram Krishna Care Hospital	3.3 km

# SITE

Nilaya Apartments  
 Behind Hotel Grand Imperia,  
 VIP Road, Raipur,  
 Chhattisgarh 492012

Ph- (+91)-9691 825 748