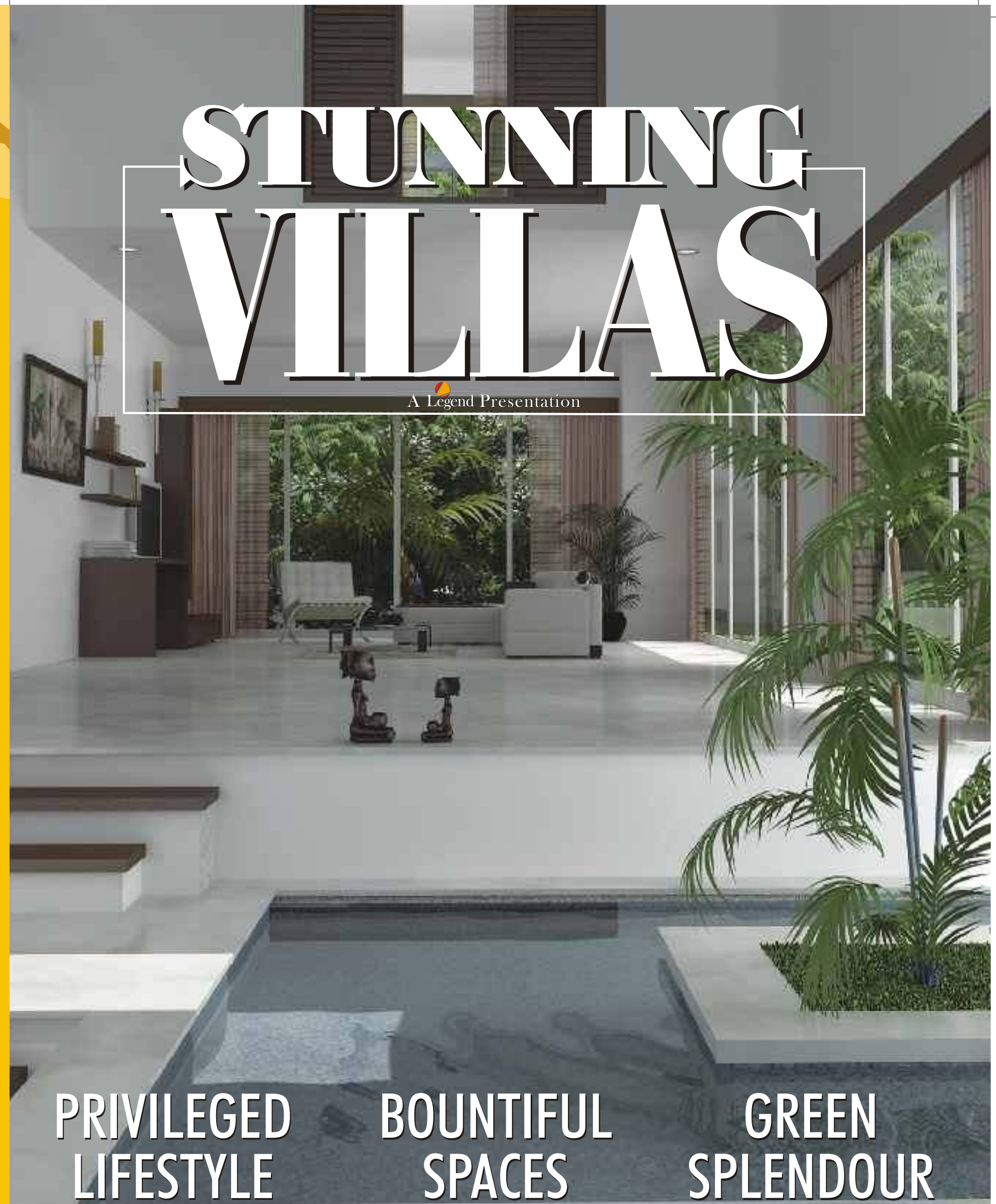


# STUNNING VILLAS

A Legend Presentation



PRIVILEGED  
LIFESTYLE

BOUNTIFUL  
SPACES

GREEN  
SPLENDOUR



ITS ALL ABOUT SMALL THINGS !

Sixth Floor, The Legend Apartment, Renuka Enclave, Raj Bhavan Road,  
Somajiguda, Hyderabad 500082 • Tel: 040 - 6663 0663 • Fax 040 - 6663 0992  
email: [marketing@legendindia.co.in](mailto:marketing@legendindia.co.in) [www.legendindia.co.in](http://www.legendindia.co.in)



Happy Family. Happier Lives.

This brochure is only a conceptual presentation of the project and not a legal offering. The promoters reserve the right to alter and make changes in elevation, specifications and plans as deemed fit.



## An Architect's Perspective

The villas in Legend Chimes are conceived as being 'without boundaries'. This concept of seamless spaces begins right from the exterior where the traditional compound walls give way to a landscape barrier providing the necessary privacy and security. On entering the villa, the entire space opens up in such a way that the transitional entry spaces expand into gathering spaces which in turn grow into more defined activity spaces like living and dining areas. Free-flowing interiors are thus achieved by removing the walls and barriers wherever possible and resorting to a sectional layering of spaces to ensure privacy.

In the process of conceiving architecture inside out, the exterior landscapes are ushered inside in the form of courts. Skylight provided above these courts bathe the interiors in the warmth of sunlight whilst directing an exciting drama of light and shade.

The spatial organisation and planning is done as an attempt to create 'happy' spaces and respect human emotions. The section reveals an interesting interplay of split levels with the primary spaces interlocking one another. Here it is levels, not walls, that define spaces. This scrupulously worked out barrier-free interiors allow visual connectivity and ensures positive levels of human interaction.

With this skillful 'putting together' of spaces, the cool air from outside is inhaled into the building and escapes at the higher level after absorbing the heat from the interiors. This continuous flow of cool air in the house throughout the day makes the building work as a machine that can 'breathe.'

Medappa & Sanjay Mohe

Partners  
MindSpace Architects

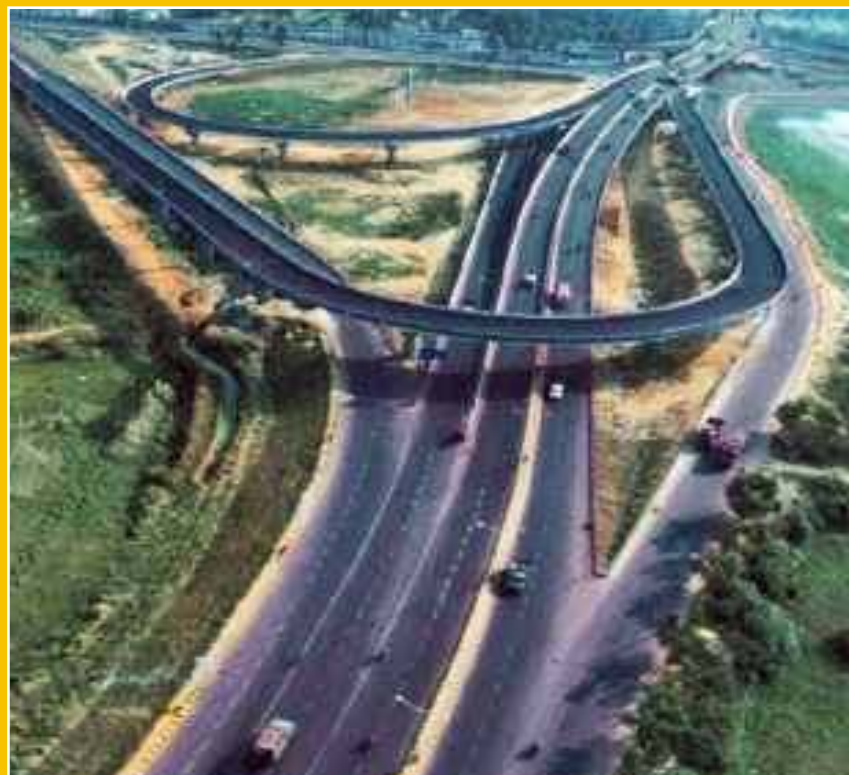


Happy Family. Happier Lives.

## Excellent Location

Chimes Villas are coming up in Kokapet which is already being touted as the city's most attractive location. Chimes is the closest Villa project to the Hyderabad Business District.

- Five Minutes away from Expressway connecting Hitec city with Shamshabad
- Five Minutes away from prominent schools like Oakridge, DPS and Sreenidhi
- Ten Minutes away from Hyderabad Golf Course and Jubilee Hills
- ISB / Microsoft / Wipro / Infosys are a few minutes drive away





## Front Garden

Be one with nature and rediscover  
the joys of walking barefoot on grass.



## Spacious Living Rooms

Nothing blends class and comfort quite like the voluminous living space.





# Beautifully Designed Bedrooms

An excellent way to unwind in the abundant comfort of cozy bedrooms!



# Lounge Around

Rejuvenate and pamper your senses by enjoying the green spaces outside.



# Naturally-Lit Kitchens With Kitchen Garden

A sumptuous experience of whipping up culinary delicacies in the naturally-lit kitchen with a garden adjoined!



Modern Fittings  
and Fixtures



World Class  
Modular Kitchens



Natural Lighting





## Chimes Villas

Chimes Villas is a prestigious venture by Legend Estates, Hyderabad. It is located in Kokapet, and is the closest Villa project to the Hyderabad Business District.

Tucked away from the city crowd and noise, Chimes Villas are a perfect luxurious haven with spectacular features like: Spacious Living Rooms, Lavish and Cozy Bedrooms, Luxurious Bathrooms, Naturally-Lit Kitchen with Garden, Relaxing Balcony Sit-Out, Front Lawn, Clubhouse, Swimming Pool, Spa, etc

Chimes Villas are available in two sizes - 500 sq. yds and 327 sq. yds with 4000 sq. ft and 2616 sq. ft spaces respectively.

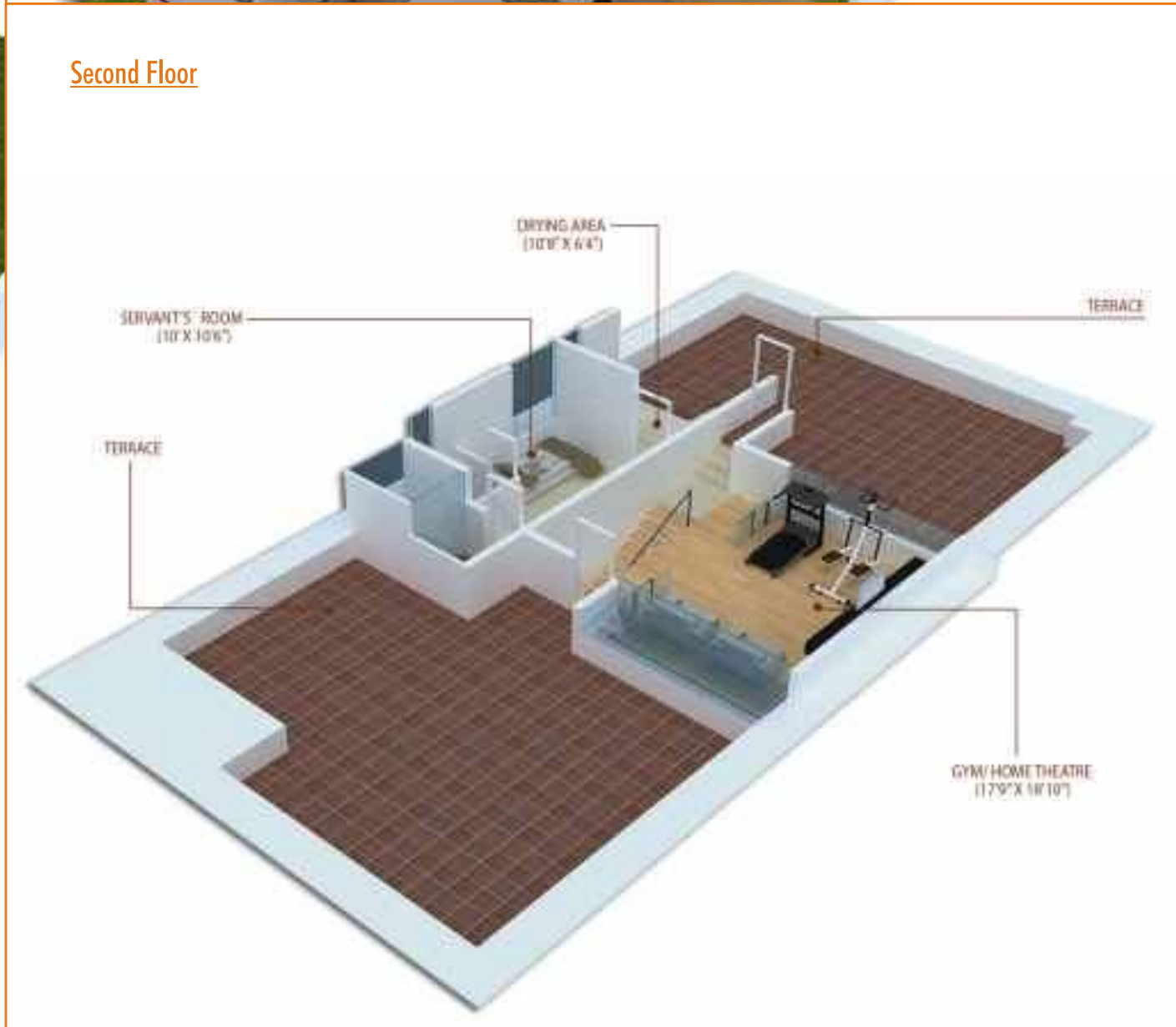
While Chimes Villas aim to foster a close-knit community of people who share similar tastes, it also offers its dwellers a private and peaceful ambience to bond and enjoy quality time with family and loved ones.



Happy Family. Happier Lives.

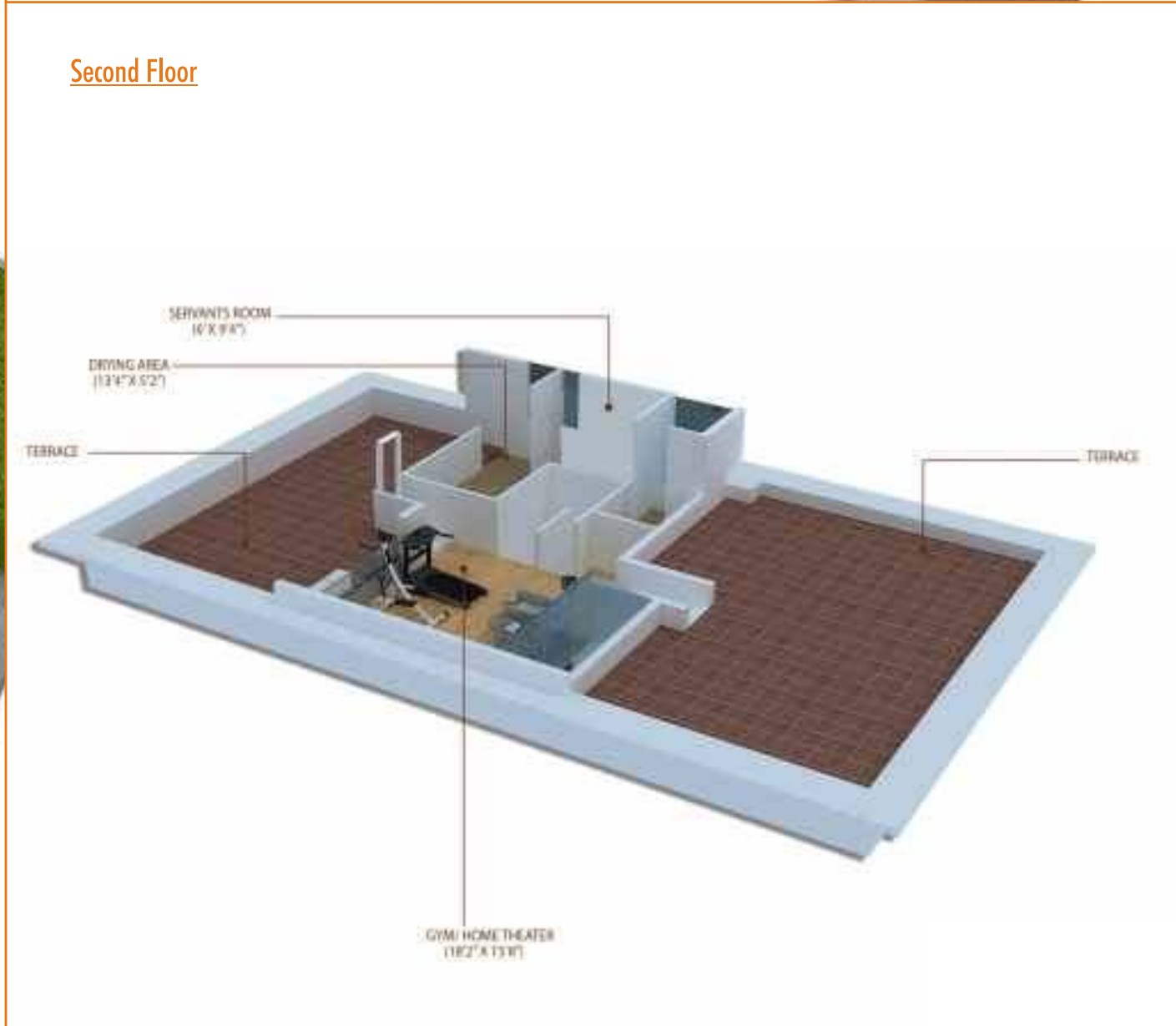
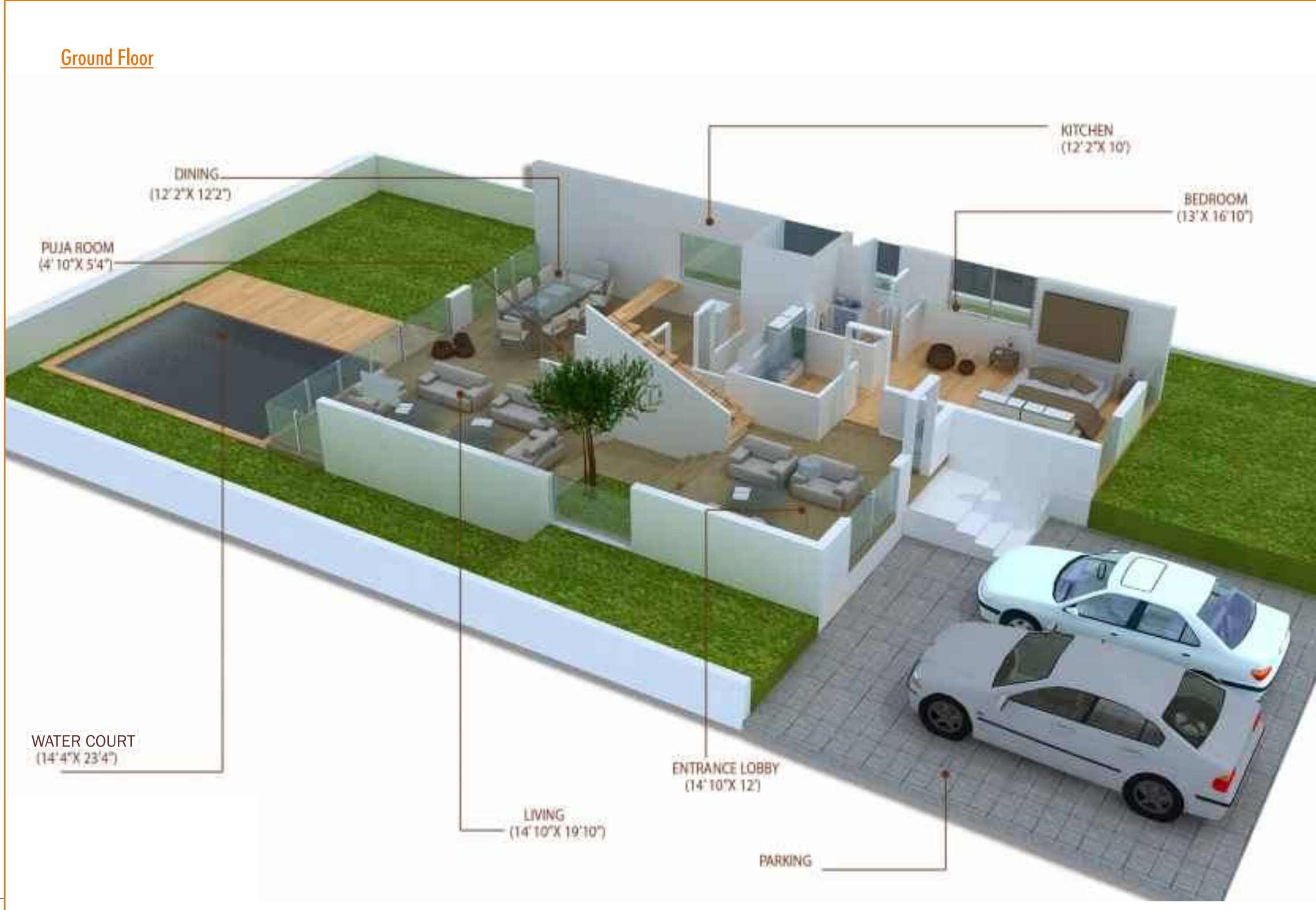
East Facing Elevation

500 sq.yds 4000 sq.ft 50' x 92'



West Facing Elevation

500 sq.yds 4000 sq.ft 50' x 92'



East Facing Elevation

327 sq.yds 2616 sq.ft 42' x 69'



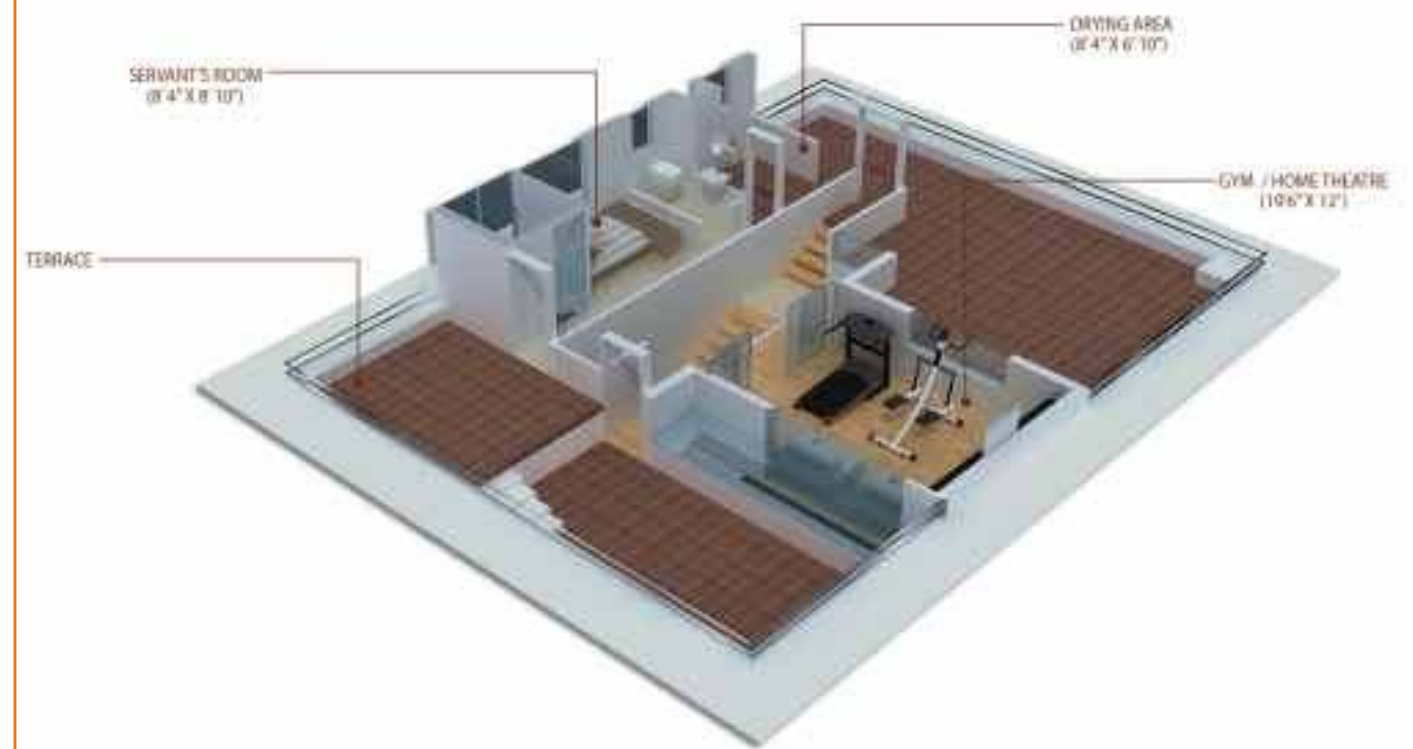
First Floor



Ground Floor

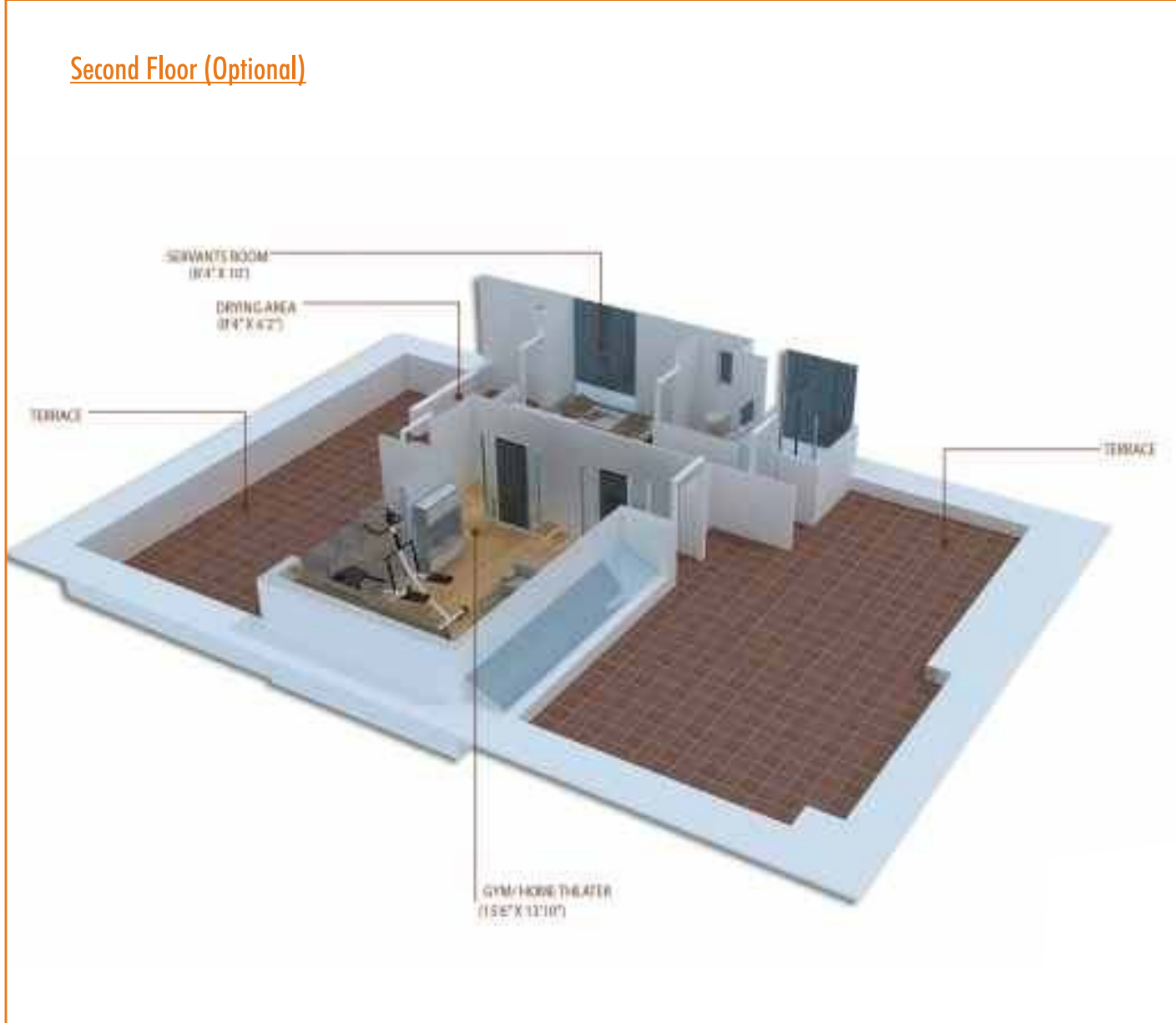


Second Floor (Optional)



# West Facing Elevation

327 sq.yds 2616 sq.ft 42' x 69'



## Wide Amenities

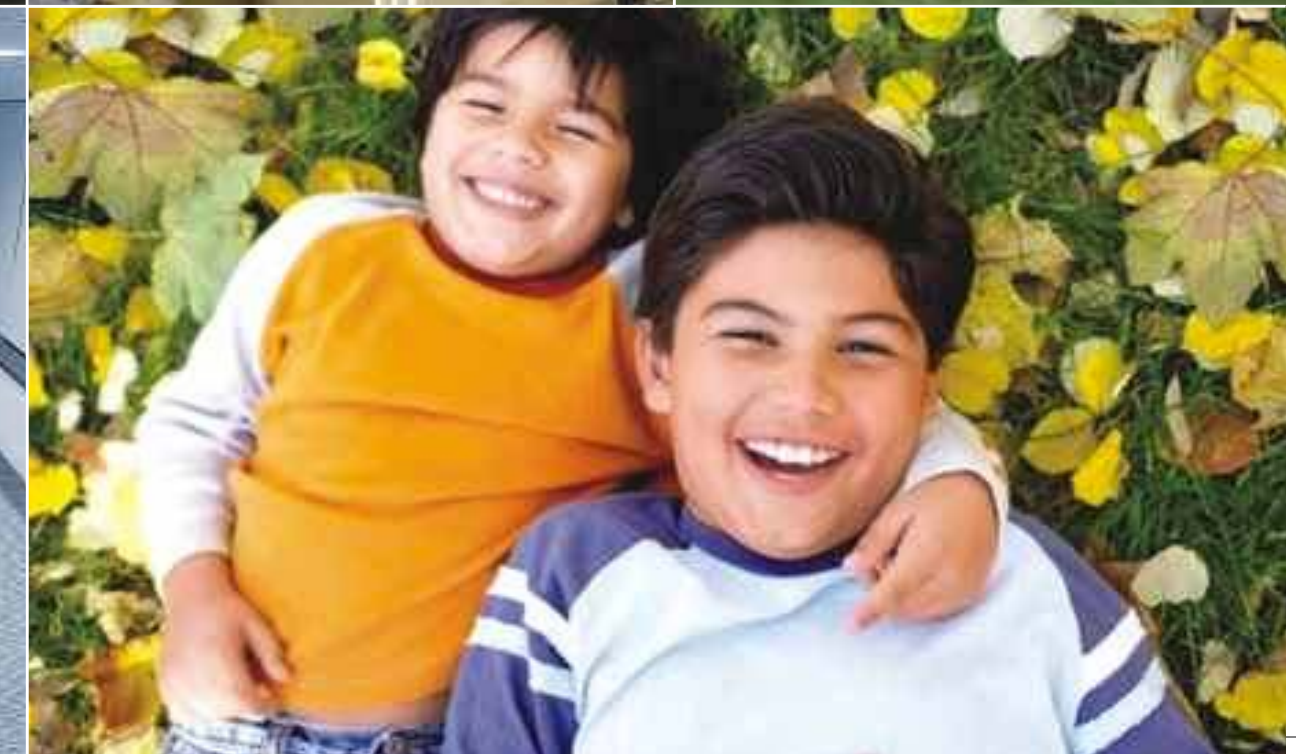
Enjoy a wholesome lifestyle with several amenities and luxuries to exploit!

- Landscaped Gardens
- Avenue Plantation
- State-of-the-Art Street Lighting
- Underground Cabling
- Broadband Connectivity
- Sewerage Treatment Plant
- Back-up Generator
- Water Treatment Plant
- Black-topped Wide Roads with Footpaths
- Solar Fencing
- Intercom Facility
- Poly Clinic
- Round-the-clock Security
- Supermarket
- Laundry

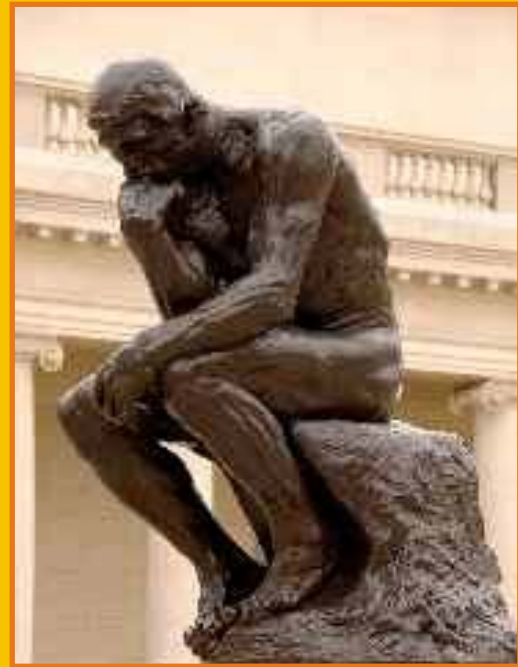


## Rich Clubhouse Facilities

- Air-conditioned Gym
- Tennis Court
- Squash Court
- Swimming Pool
- Library
- Business Centre
- Multi-cuisine Restaurant
- Wireless Internet
- Children Recreation Zone
- Party / Banquet Hall
- Guest Rooms
- Service Apartments
- Lounge
- Jogging Track
- Indoor Games
- Modern Spa
- Thinking Room







## Thinkers Room

Legend recognizes that people staying at Chimes are decision-makers. Hence we have created a novel Thinking Room in the Clubhouse.







An Aerial View  
Of Chimes Villas



Happy Family. Happier Lives.

# The Legend Story

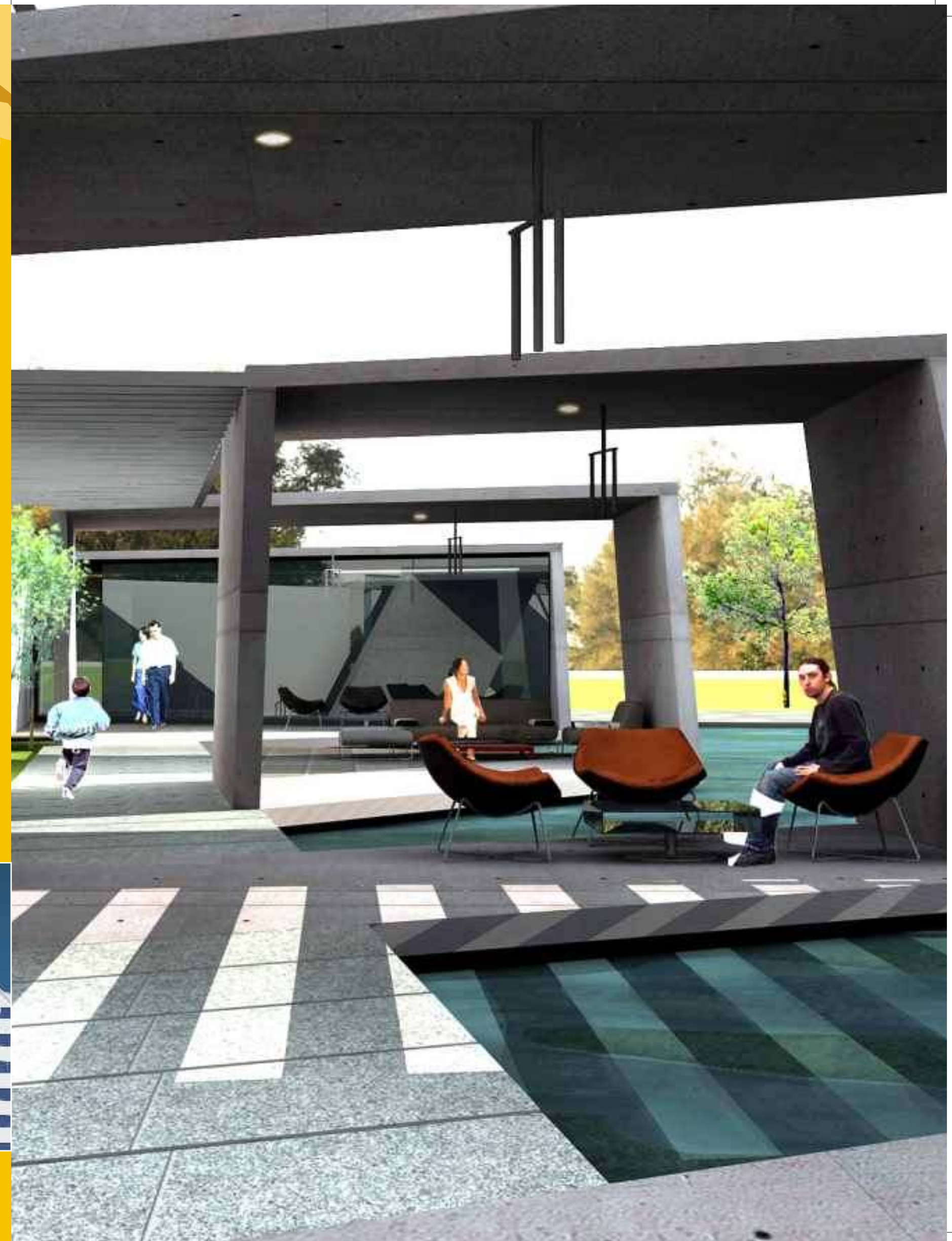
Legend started its successful journey in the world of real estate construction with a residential apartment complex in Hyderabad in 1998. Since then, it has delivered over 75 premium residential projects. As of 2008, more than 5000 people live happily in Legend built apartments. A dedicated team of 150 civil engineers, architects and other professionals at Legend are constantly creating high quality commercial, institutional and residential spaces that deliver the best value to customers.

Legend was the outcome of the promoter's belief that in the real estate market, there was a niche opportunity available for a strong values-based company.

Legend's projects are always best-in-class. The Legend brand enjoys trust and confidence of thousands of people in Hyderabad. It is this commitment to satisfying customer needs and exceeding their expectations that forms the crux of Legend's core value system. A system that's the guiding force behind every Legend initiative.

Legend's residential spaces reflect the best in aesthetics. With sufficient opportunity for customisation, the residential spaces are designed with maximum ventilation and keeping natural lighting in mind, factors that impact the happiness quotient. Legend is driven by distinctive design innovation, attention to the smallest details and quality craftsmanship. Legend's chosen locations have always had excellent potential for growth and this has brought happiness, peace and prosperity to each one of its customers.

Legend's ongoing and future projects include a magnificent IT park, premium lifestyle villas, gated communities, and sprawling residential complexes comprising 500 apartments among several other residential and commercial projects. Legend has extended its operations to Visakhapatnam too, where it is developing a premium residential layout and also constructing a large Residential and Commercial Complex in a prime area of the city.



Harmony



Coconut Grove



Mint