

East Facing

500 Sq.yds



Ground Floor Plan

500 Sq.yds - East Facing

Area - 1884 sq.ft



500 Sq.ydst - East Facing

Area - 1658 sq.ft

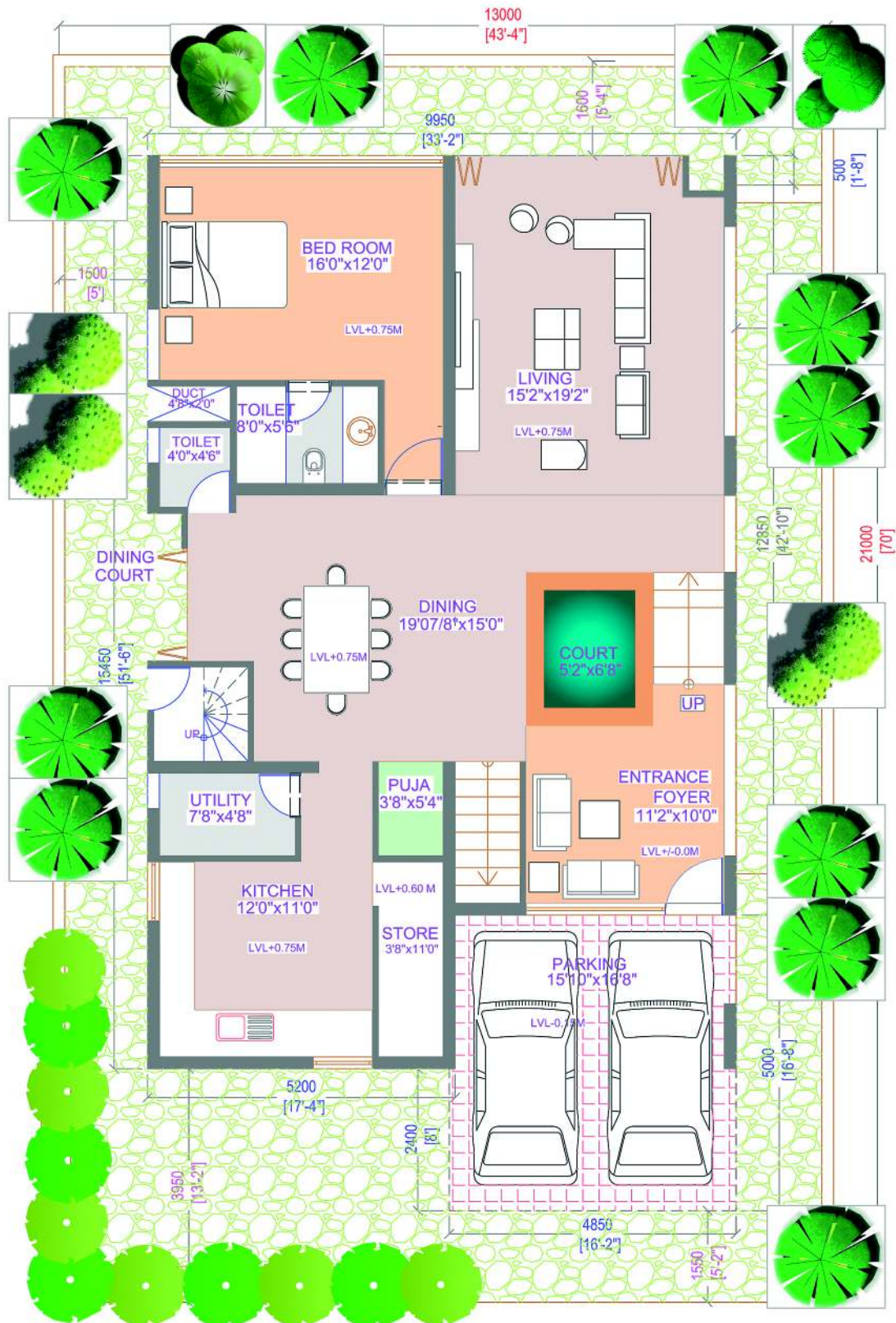


Second Floor Plan
500 Sq.yds - East Facing

Area - 667 sq.ft

East Facing

327 Sq.yds



Ground Floor Plan

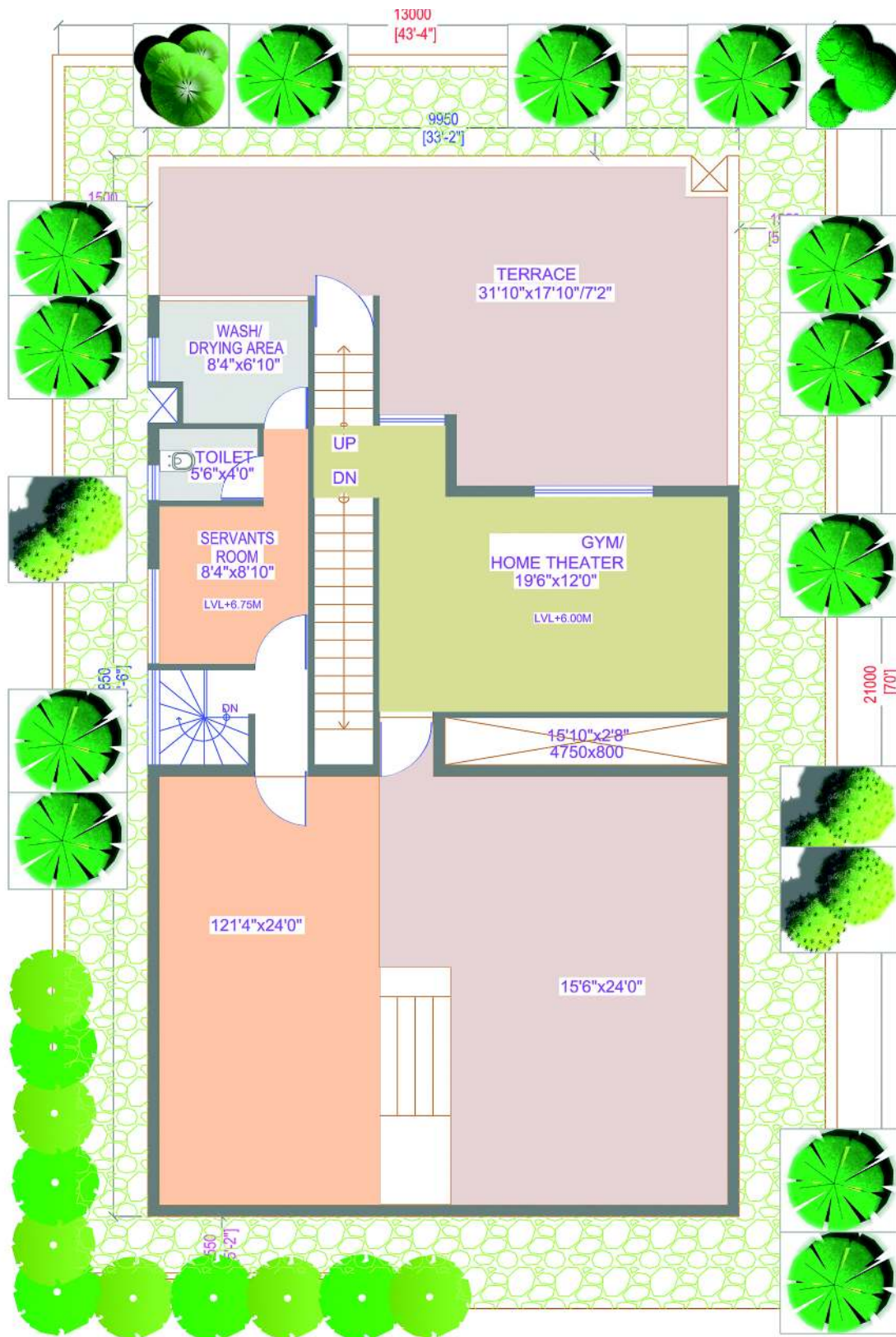
327 Sq.yds - East Facing

Area - 1485 sq.ft



First Floor Plan
327 Sq.yds - East Facing

Area - 1432 sq.ft

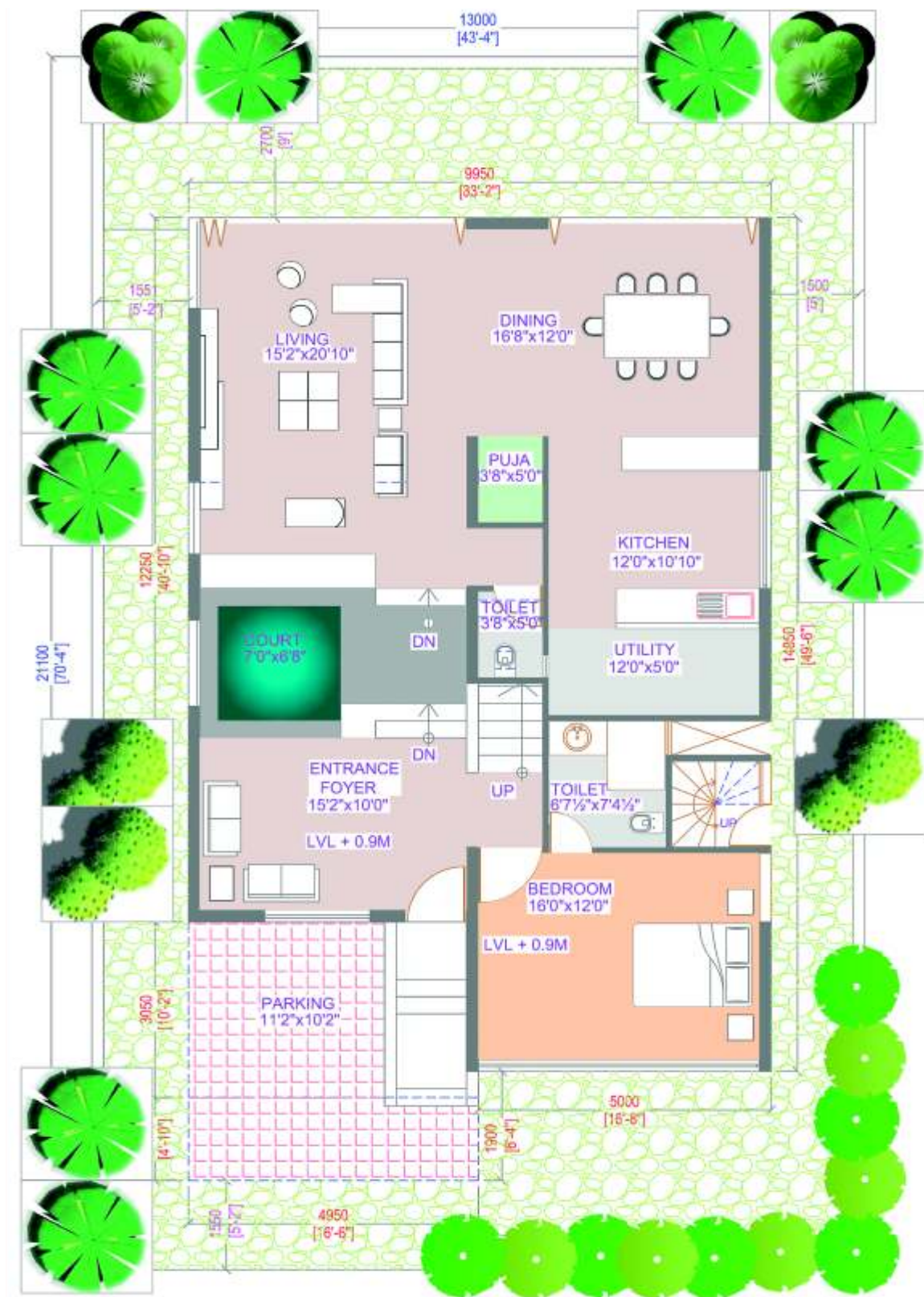


Second Floor Plan (Optional)
327 - East Facing

Area - 538 sq.ft

West Facing

327 Sq.yds



Ground Floor Plan

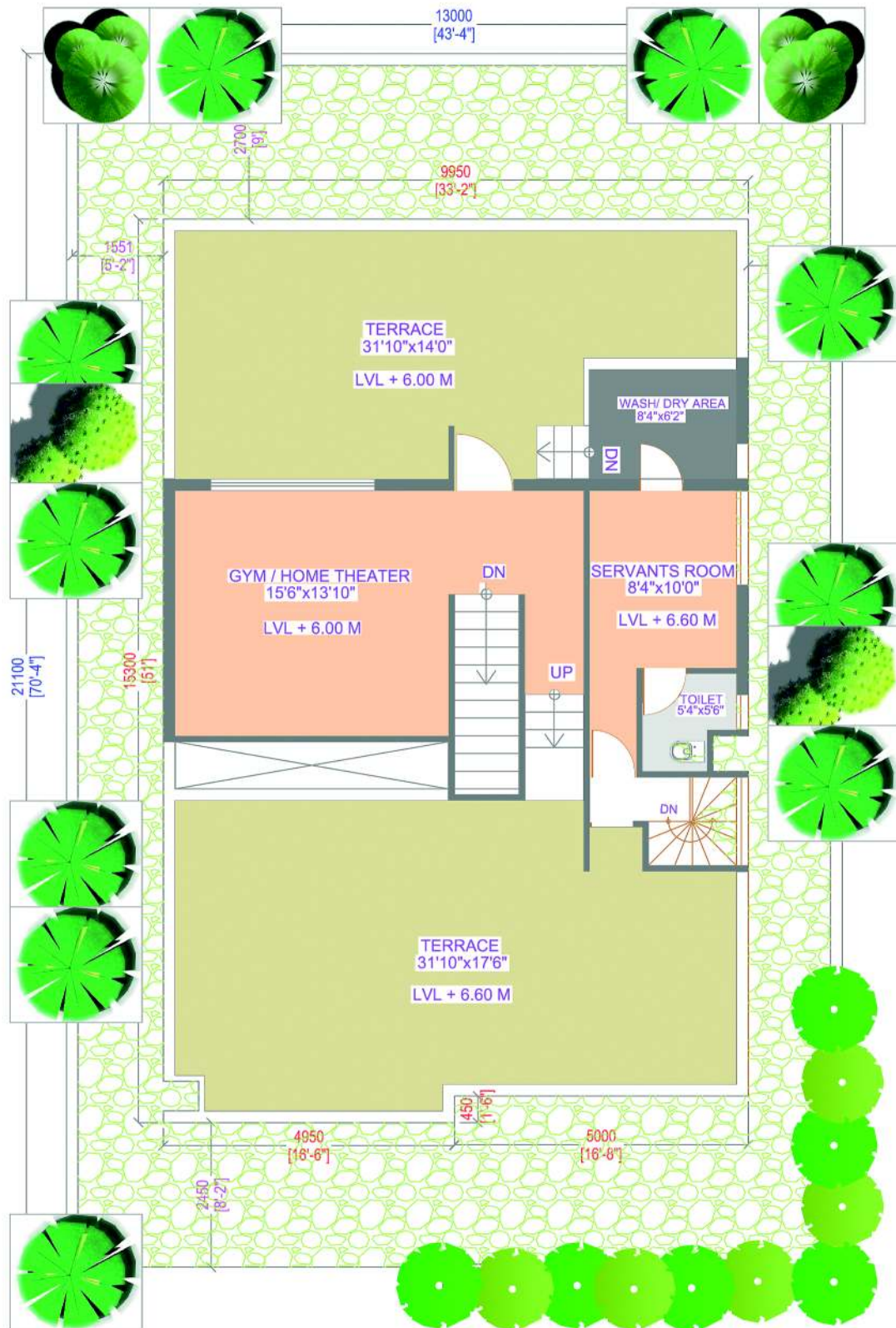
327 Sq.yds - West Facing

Area - 1442 sq.ft



First Floor Plan
327 Sq.yds - West Facing

Area - 1367 sq.ft



Second Floor Plan (Optional)
327 Sq.yds - West Facing

Area - 560 sq.ft

West Facing

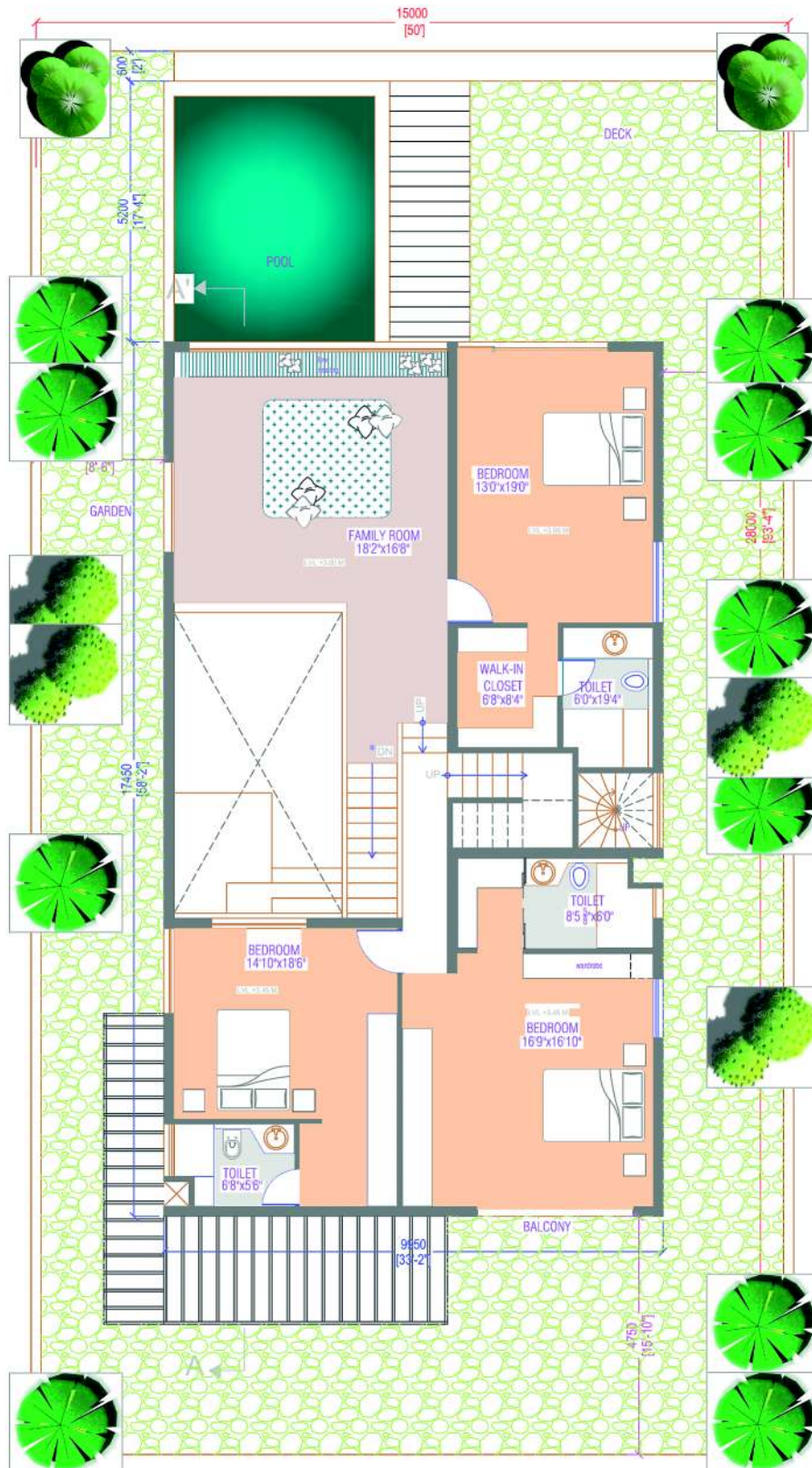
500 Sq.yds



Ground Floor Plan

500 Sq.yds - West Facing

Area - 1485 sq.ft



First Floor Plan
500 Sq.yds - West Facing

Area - 1647 sq.ft



Second Floor Plan
500 Sq.yds - West Facing

Area - 581 sq.ft