


olone  
by WALLFORT



Ozone - Wallfort, a prestigious commercial complex is being planned at Raipur, the buzzing capital city of Chattishgarh State.

Ozone will emerge as the most sought after business address in Raipur. It is another signature product from Wallfort Group, which has left the imprints of class and quality with other prestigious developments such as "Wallfort Enclave" and "Wallfort City".

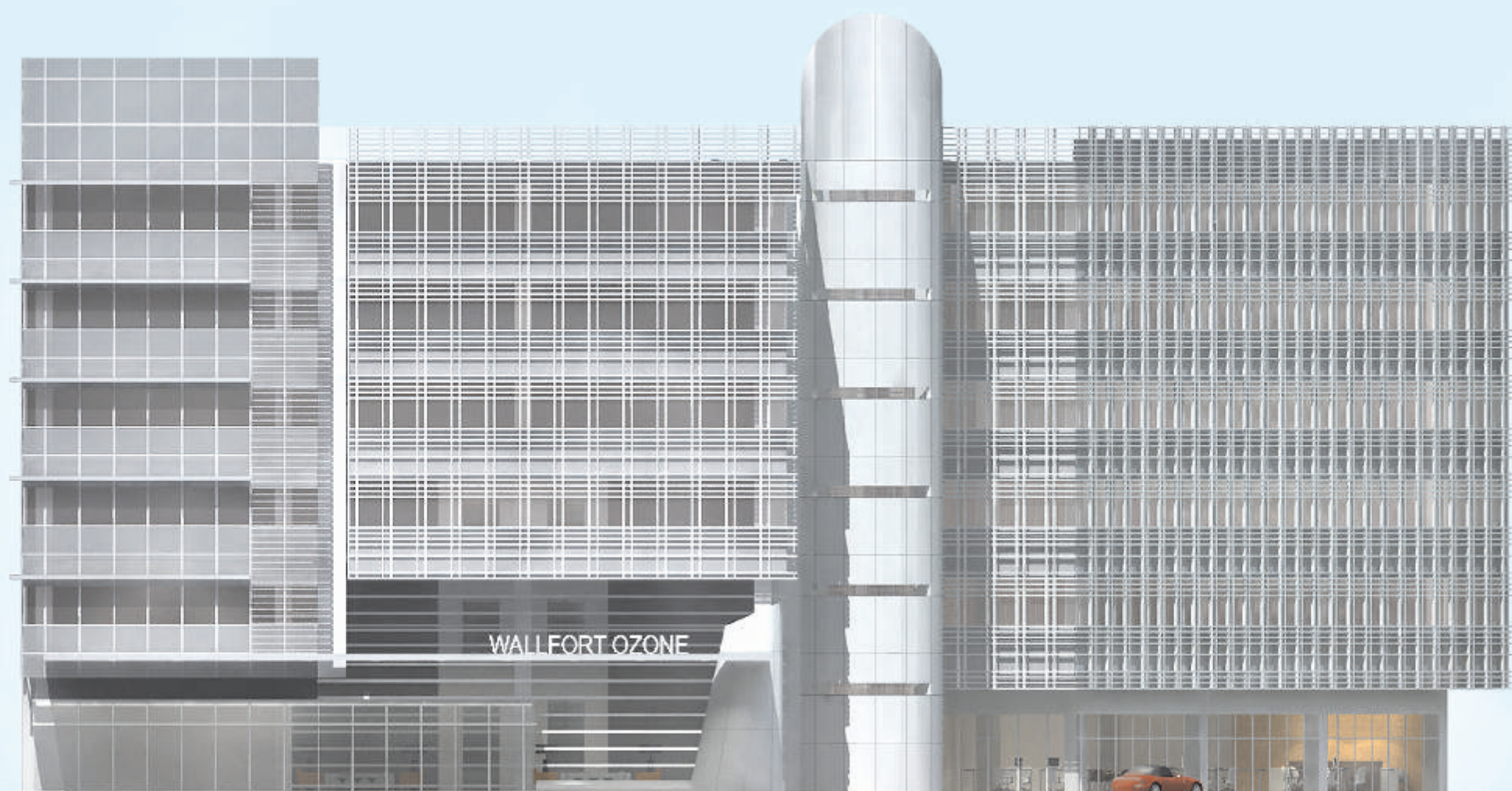
Ozone will be a modern commercial building that will thrive in the local market while accommodating different users. The design will create a truly new model for offices in the city of Raipur. It will set new standards in terms of functionality, sustainability and adaptability over time.

ozone







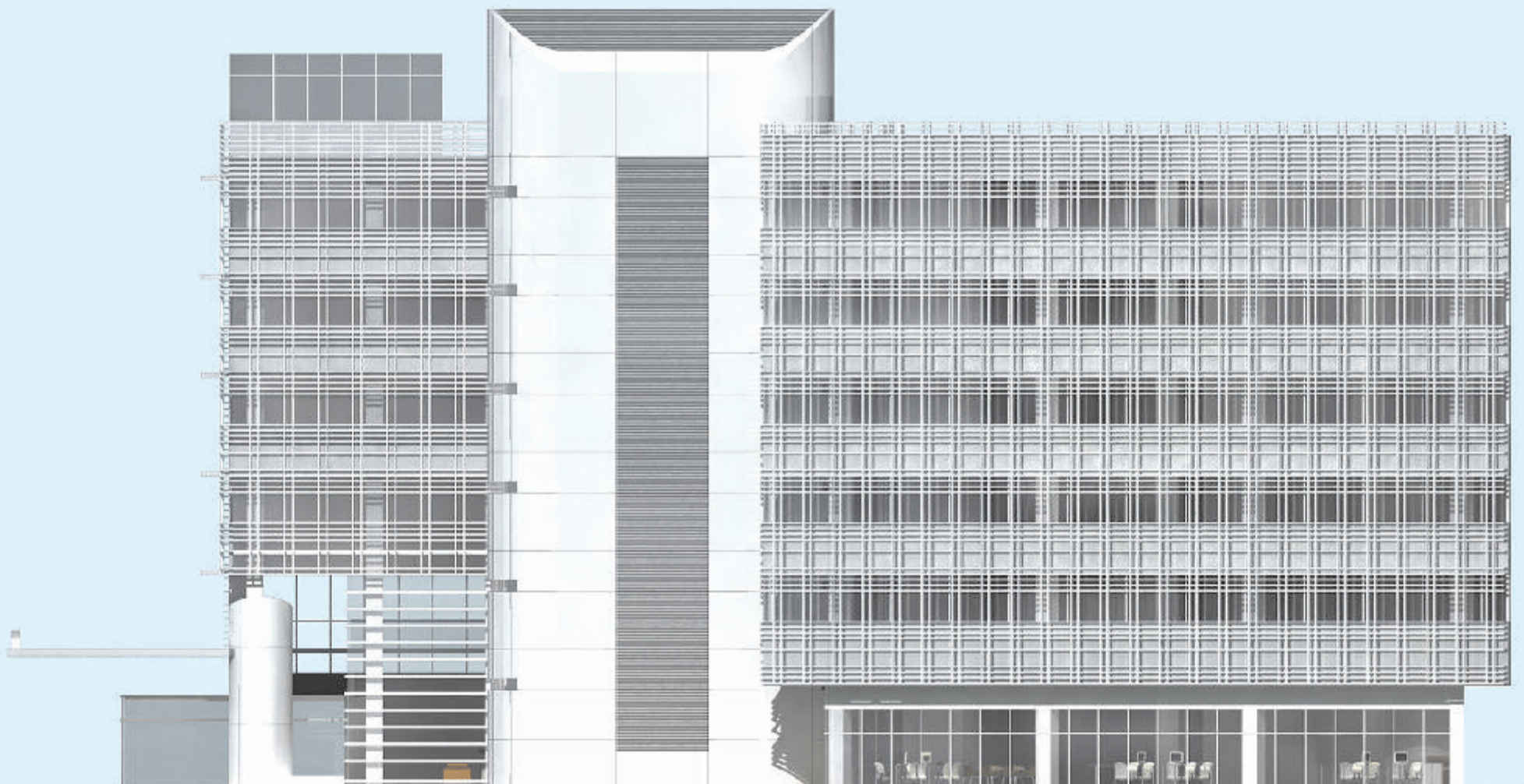


Front Elevation



Exterior materials will feature a combination of brick, punched windows and louvred screen. A predominantly horizontal curtain wall defines the "corner" entry, while a vertically organized curtain wall accentuates the tower's verticality.

ozone



Side Elevation



The grand entrance lobby is designed with elegant granite marble flooring and wall finishes and an elegant touch of design detail. The soaring ceiling height with the well balanced hue and texture, impersonates the art of distinction in space and light.

OLONE







OLONE



ozone





The design unifies the concept of lifestyle working environment. The sense of scale and richness of detail will complement the local and international expectations. The side-loaded lift core allows for an efficient floor plate with column-free interiors.

Cutting-edge technology through out, finishes and fittings are all of the very highest quality. State of the art security system assures privacy and security whilst an exclusive underground car park assures accessibility at all times.





## Amenities & Specifications

- High roof well decorated lavish lobby and open to sky atrium.
- Premium quality construction.
- Clean cut bare shell possession for your convenient layout designing and interior decoration.
- Fully Decorated - marbled granite lobby / corridor on each floor.
- Well equipped common wash room with top quality fixture & fittings.
- Tastefully appointed cafeteria serving the whole complex.
- Double basement parking space.
- Glass elevator & cabin elevators from a reputed company.
- Landscaping & water bodies for a enhanced appearance.
- 24 x 7 manned security supported by surveillance setup.
- Fully equipped fire fighting system.



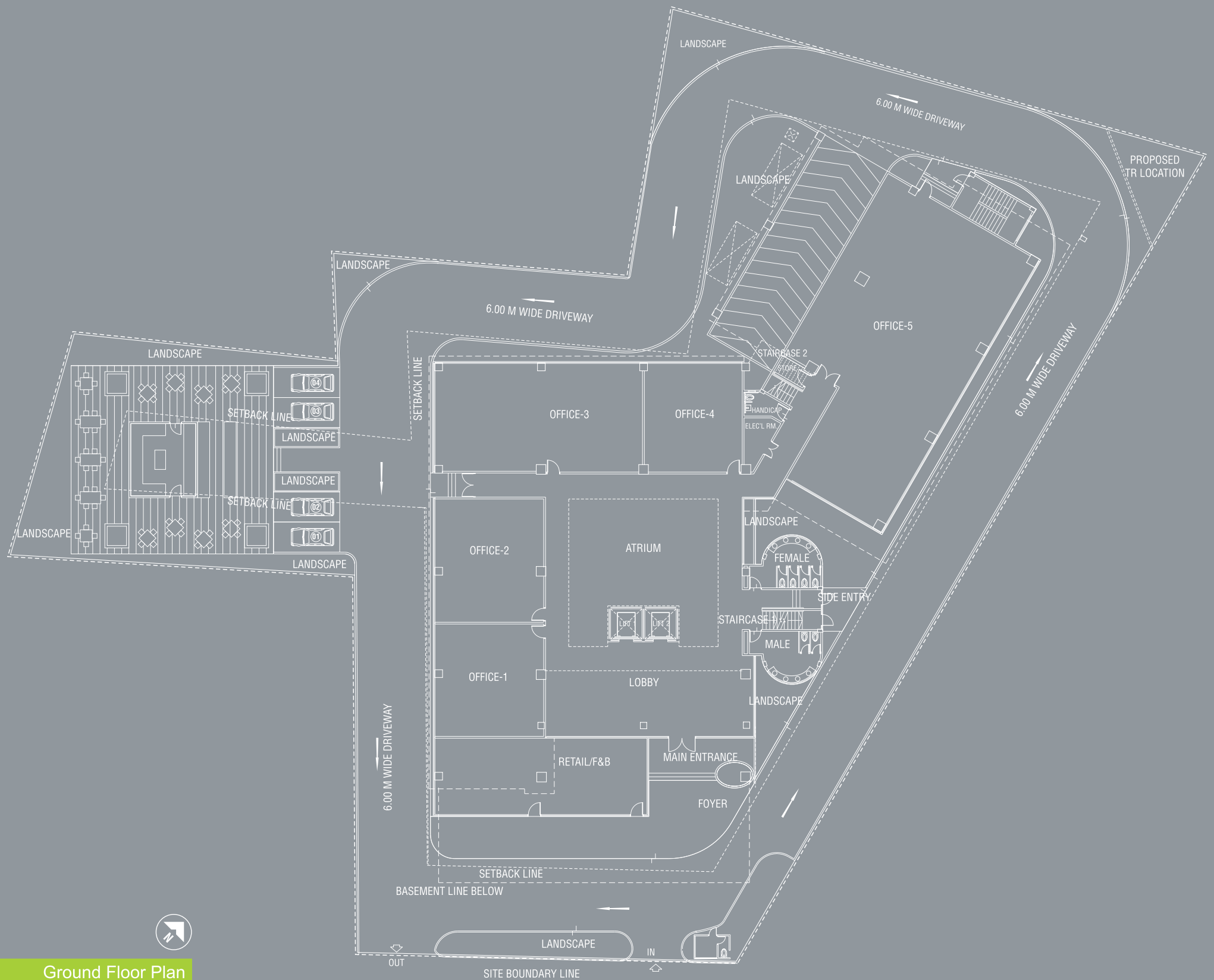


ozone



Ozone has all the amenities to provide excellent facilities with the state of art fittings and fixtures for the comfort of the occupants. With a featured ground floor garden terrace and roof top garden and a host of other facilities, the building offers all the amenities required for any business man. There is no doubting the profile of this corporate buildings.





Ground Floor Plan

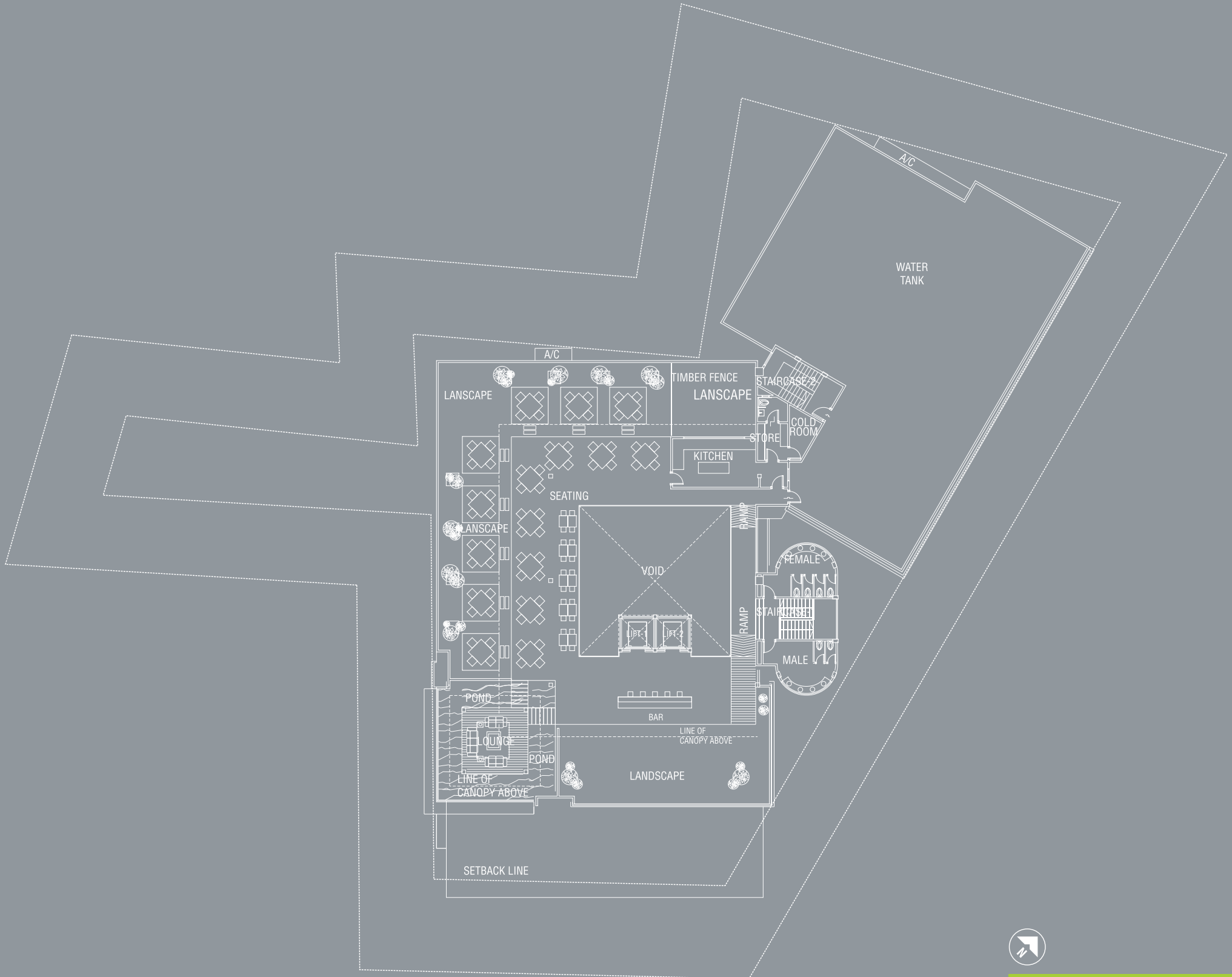






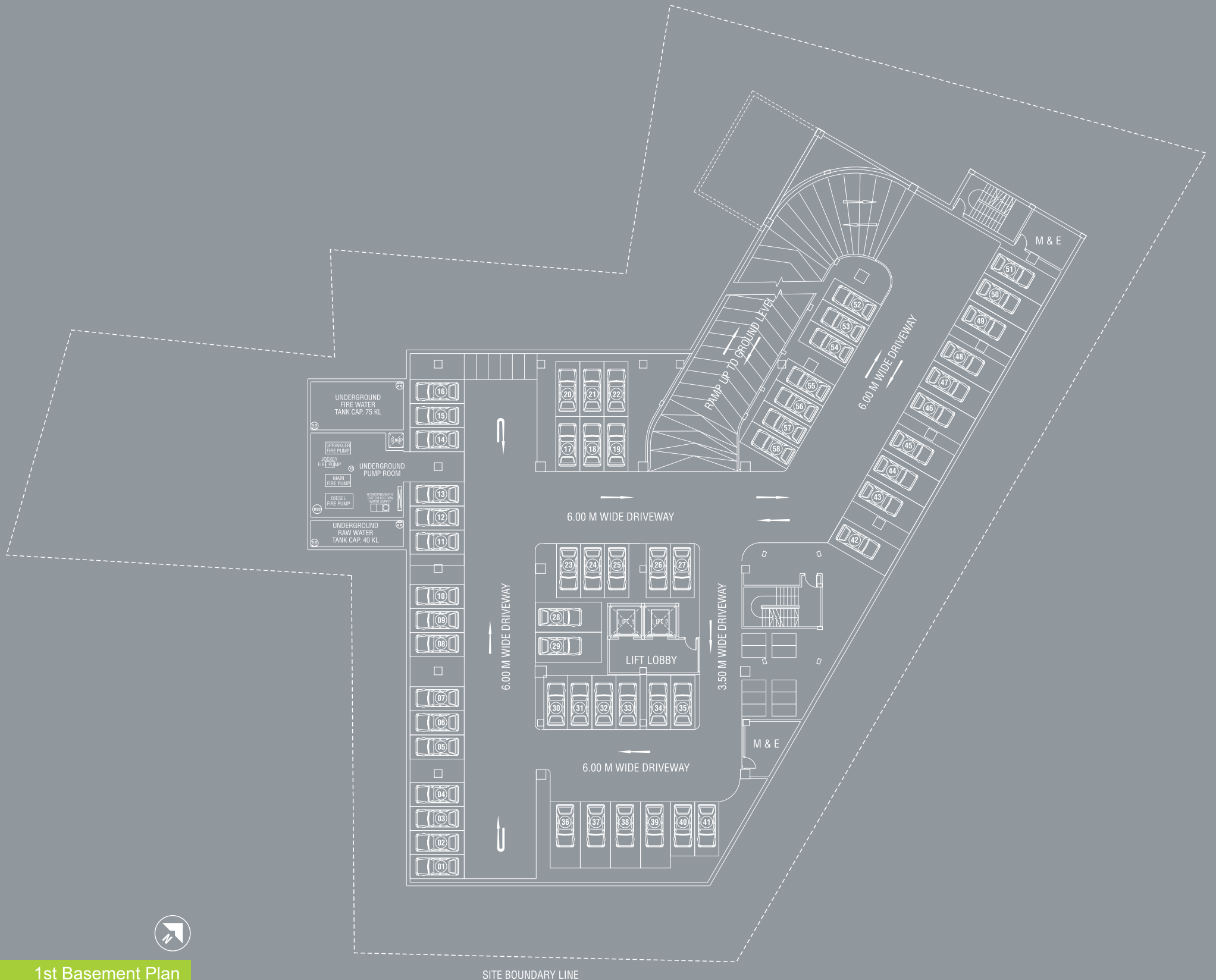
2nd to 5th Floor Typical Plan





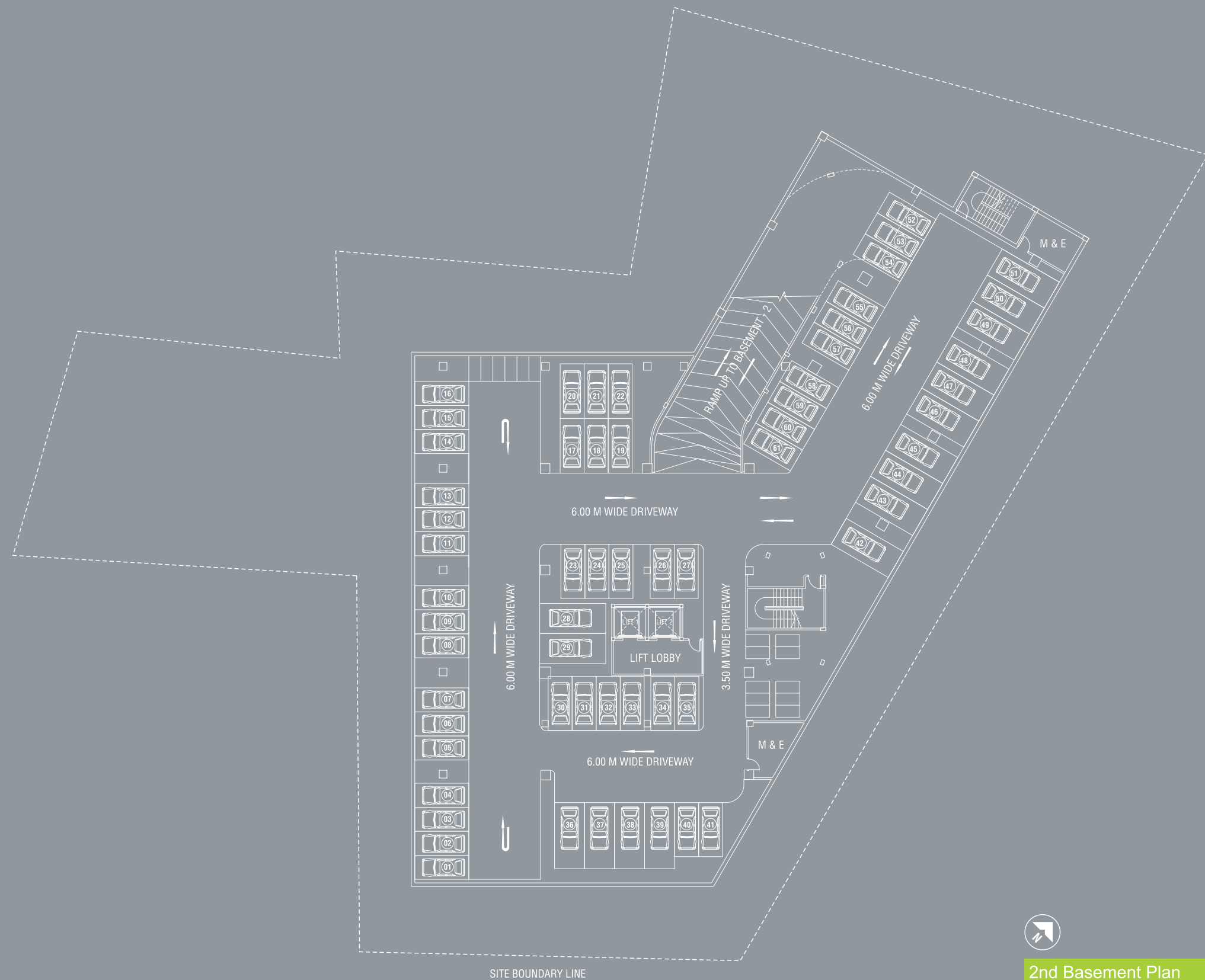
Roof Terrace Plan





1st Basement Plan







Wallfort Completed Projects

actual photographs



Wallfort Enclave, Raipur



Boston House, Mumbai



Wallfort Tower, Mumbai

Wallfort ongoing Projects



Wallfort City, Raipur



A. M. Jewellers, Raipur

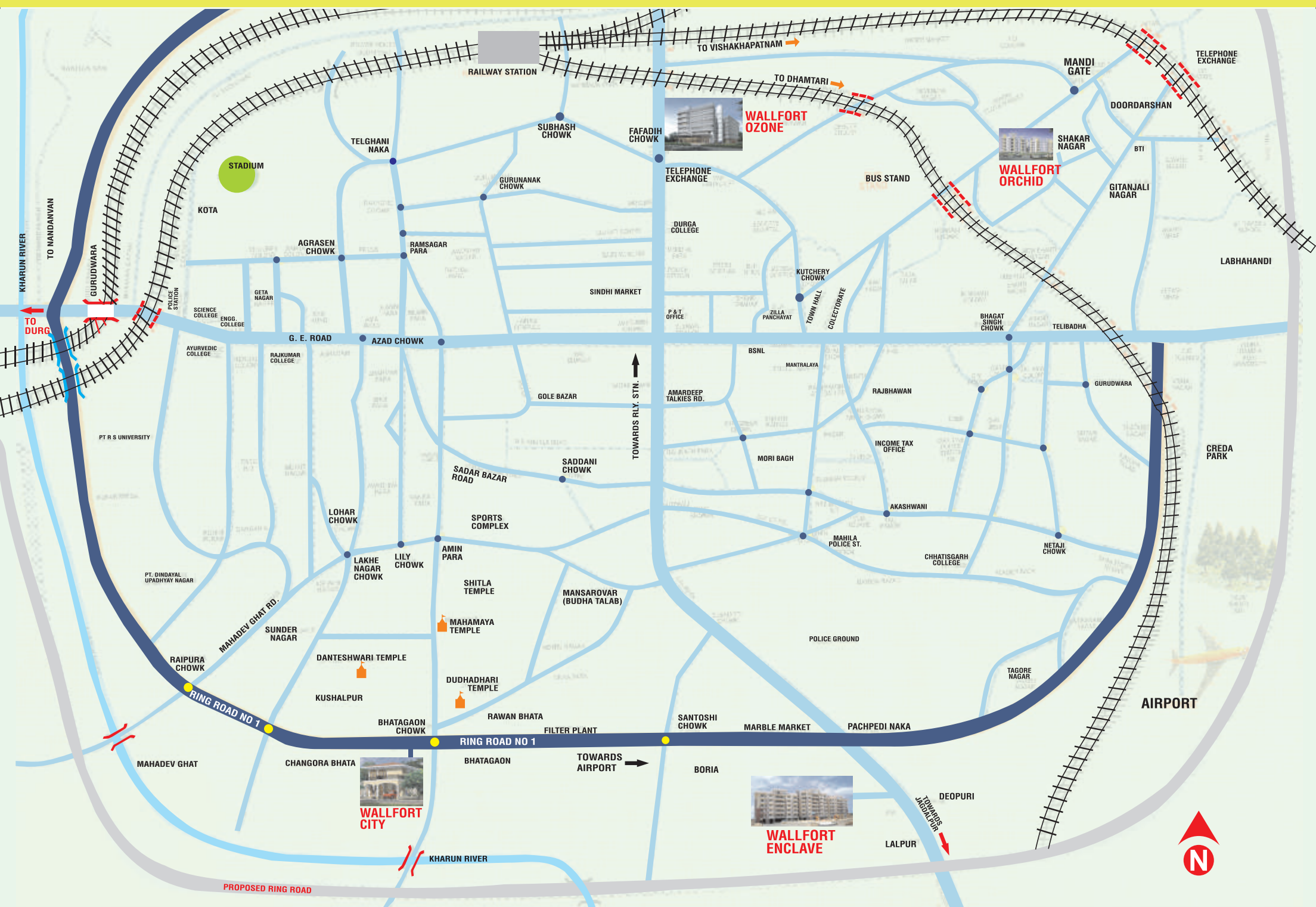


Wallfort City Centre, Malegaon



Wallfort Orchid, Raipur







---

Developer  
WALLFORT PROPERTIES PVT. LTD.  
220, Jairam Complex, Sharda Chowk, Raipur - 492 001.  
Tel.: 0771-3298172, 4043656 • Fax: 4039056  
Email: wgarden@rediffmail.com

Architects  
EAST 9 ARCHITECTS & PLANNERS (E9AP), Singapore  
SANDEEP SRIVASTAVA, Raipur

Structural  
PRASHANT BANI, Raipur

Legal Consultant  
SUDHIR AGARWAL, Raipur

Electrical & Plumbing Consultant  
JS ENGINEERS, New Delhi

---

