

A PRESTIGIOUS PROJECT FROM | GAUTHAMI DEVELOPERS



This Brochure is purely conceptual presentation and not a legal offering. The developer reserves the right for alterations if any.



WHICH GIVES  
PLEASURE TO YOUR STAY

# Sai Subashini

## TOWERS



Promoters

**GAUTHAMI DEVELOPERS**  
Flat No.207, Gayathri Nest, Plot No 42-47  
Shyam Nagar, Telecom Nagar Colony  
Gachibowli, Hyderabad -500 032.  
E-mail: gauthmi.developers@gmail.com

[www.gauthamidevelopers.com](http://www.gauthamidevelopers.com)

Site Address

Survey No. 99 part  
Situating at Kondapur Village  
Serilingampally Mandal  
Ranga Reddy District.

Architects & Engineers

**G. V. ASSOCIATES**  
Road No.10, Banjara Hills, Hyderabad – 500 034.

Sales Team :

90009 00651  
90009 00652

Office:

040-6535 4242, 4343  
E-mail: sales.gauthamidevelopers@gmail.com

## About Promoters



Which gives **Pleasure** to your stay

### **BUILDING HOMES FOR U CREATING HAPPINESS FOR ALL**

Over 15 years ago, **Gauthami Developers** ventured into creating homes and happiness, **Sai Subashini Towers** is one of our newest offerings. We believe that the home is a sacred place, It's where the life's experiences take birth. Which is why every home we build integrates designs that make the everyday easy and hassle-free. So come, make the most of your home at **Sai Subashini Towers**.

The company is managed by an experienced structural engineer **V. Ravinder Reddy**, AMIE M.Tech. **Gauthami Developers** have successfully completed several residential and commercial complexes in prominent places of the city. **Gauthami developers** is managed by **V. Ravinder Reddy** and **V. Shyam Sunder Reddy**. We give value and preference to our customers by striving to make every project exclusive, by using high quality materials, and completing projects in time.

**RELY ON US TO BUILD A STRONG FUTURE**

Uniquely **Designed** Elevation



## Project **Highlights**

**Sai Subashini Towers** is the most prestigious and Iconic venture of Gauthami Developers located at Kondapur.

Surrounding **Sai Subashini Towers** are major MNCs, IT giants, shopping malls, schools etc, which makes it the best choice. It is a self-contained gated community with lush green landscapes and a luxurious clubhouse.

## Amenities

- Banquet Hall
- Clubhouse with Indoor Games
- AC Gym
- Adults Swimming Pool
- Tennis Court
- Children Play Area
- Sit Out Area (park)
- 24/7 Security
- CCTV Surveillance
- Solar Fencing
- Water Softner



# Typical Floor Plan



40 Ft WIDE ROAD



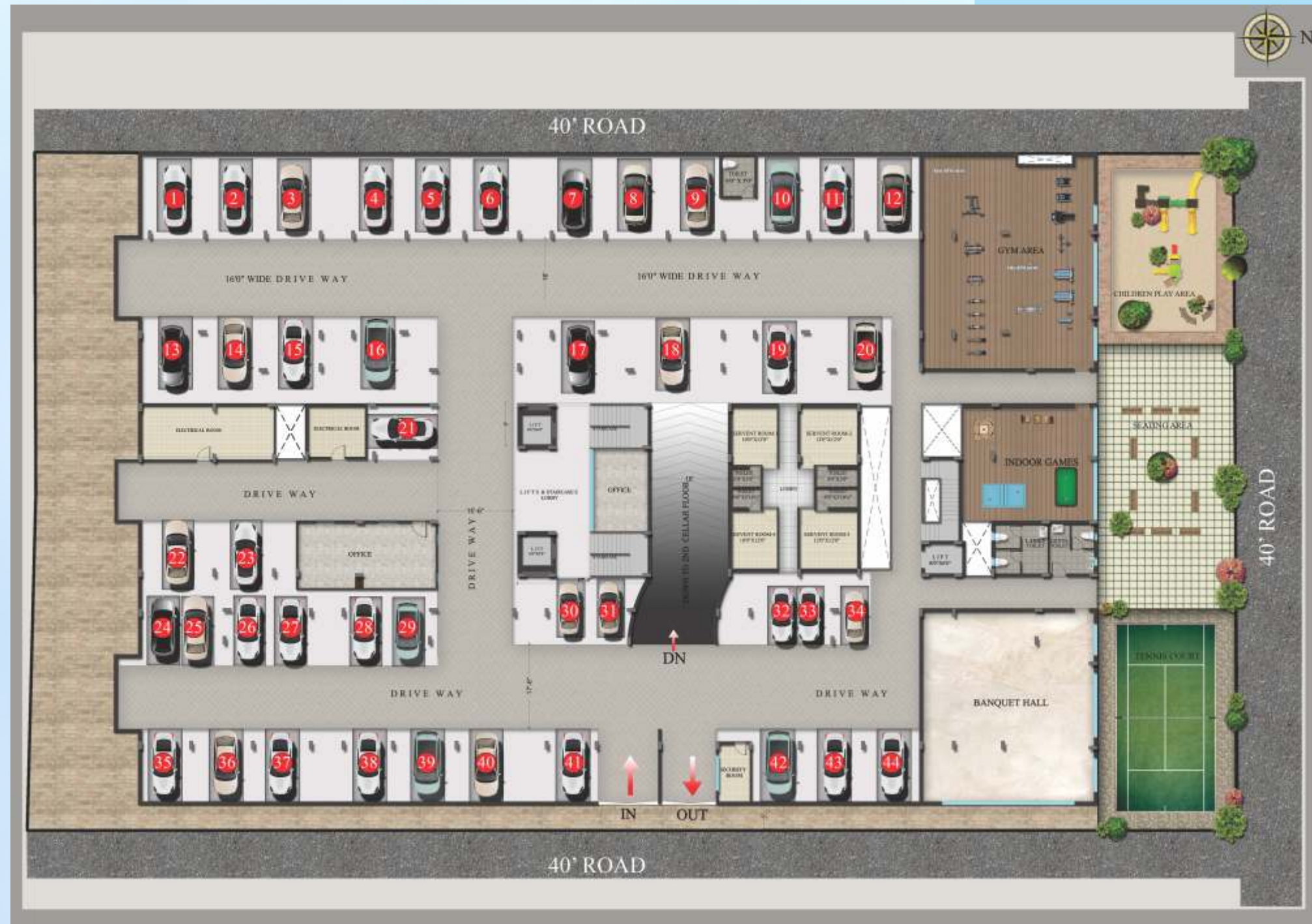
## Area Statement

Flat Nos.	Area in sft.	Facing
1	1430 sft.	East
2	1320 sft.	East
3	1355 sft.	East
4	1320 sft.	East
5	1355 sft.	East
6	1295 sft.	East
7	1270 sft.	East
8	1355 sft.	West
9	1355 sft.	West
10	1355 sft.	West
11	1355 sft.	West
12	1355 sft.	West
13	1315 sft.	East
14	1270 sft.	East

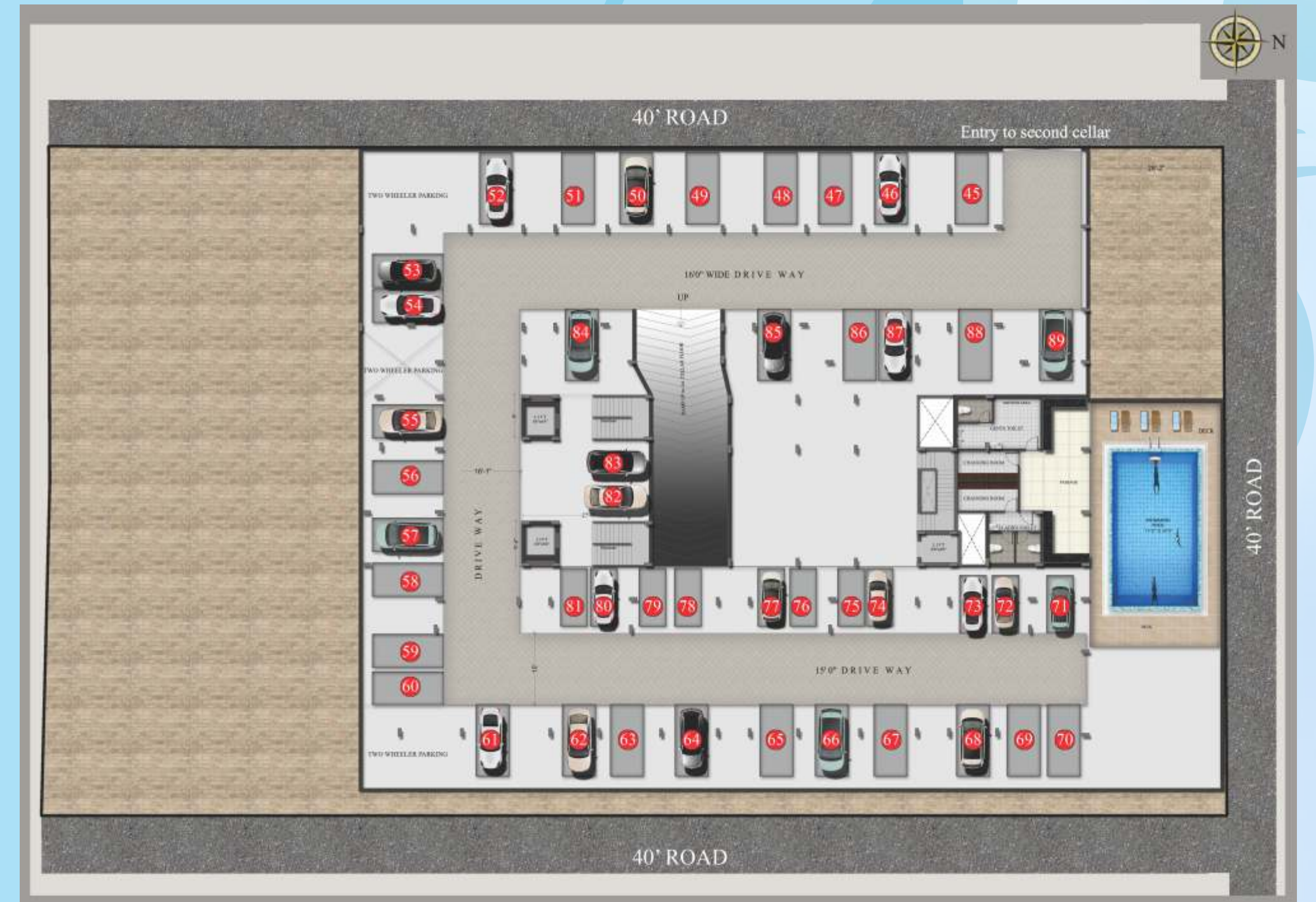
40 Ft WIDE ROAD

40 Ft WIDE ROAD

# Cellar Floor Plans







First Cellar Floor Plan




Second Cellar Floor Plan


# Specifications

<p><b>FOUNDATION &amp; STRUCTURE</b></p> <p>R.C.C. framed structure as per standard specification</p>		<p><b>WALLS</b></p> <p>Red Clay Brick In 4 ½" &amp; 9" Thick Brick Work With Cement Mortar Of (1:6) Prop. For Internal and External Walls With Cement Plaster Of ¾" In C.m. (1:6) And (1:4) Prop. With Sponge Finish.</p>	<p><b>DOORS</b></p> <p>Teak Wood Frame With Teak Wood Shutter For Main Door And Other Doors Of Teak Wood Frames With Flush Shutters.</p> <p><b>WINDOWS</b></p> <p>U P V C Windows.</p>
<p><b>FLOORING</b></p> <p>Vitrified Tiles Flooring of 2'0 X 2'0 Size</p>	<p><b>KITCHEN</b></p> <p>Platform With Granite and 2'-0" Ht Of Dadoing With Tiles (exhaust/chimney Provision)</p>		<p><b>TOILETS</b></p> <p>E.W.C., Hindware Or Equivalent Quality In Each Toilet And 6 '6" Height Glazed Tiles For Walls, Anti Skid Ceramic Tiles For Toilets Flooring And Wash (uty) Area.wash Basin, Shower Hot/cold Water.</p>
<p><b>PAINTING</b></p> <p>Wallcare (luppum) Finishing With Plastic Emulsion For Interior and apex For Exterior.</p>		<p><b>ELECTRICAL</b></p> <p>Concealed Copper Wiring In Conduits For Lights, Fans, Phone And T.V. Plug Points Wherever Necessary With Modular Switches Of Standard Make. Geyser, AC For Beds, Micro Oven, Refrigerator Provision with MCB's Abb/ Havells Make Or Equivalent.</p>	<p><b>PLUMBING</b></p> <p>Fittings Of Standard Make.</p>
<p><b>LIFT</b></p> <p>Standard</p>	<p><b>GENERATOR</b></p> <p>For Common Lights, Lift And Also 3 To 4 Points In The Flats.</p>		<p><b>SECURITY</b></p> <p>Intercom, and CCTV Surveillance</p>

# Location Map



## TOWERS



### Location Highlights

- 4 Kms from Hitech City
- 2.5 Kms from Botanical Gardens
- 1 Km from Chirec Public School
- 750 Mts from Heritige Kondapur
- 400 Mts from Arbor International School