

“ So, do you want to be a part of Purple Rose?
I would love to see you as my neighbor, but the
property is selling like hot cakes. Call them now
and find your delights at Purple Rose. ”



Book Your Home Now!
Call: 90192 22777
Mail: purplerose@sowparnika.com



SOWPARNIKA
Delivering Happiness

**Sowparnika Projects and
Infrastructure Private Limited**

Corporate Office: 750, 1st Main Road, C-Block,
AECS Layout, Kundalahalli, Bangalore - 37.
Ph: 91-80-4243 3000, Fax: 91-80-4243 3003
www.sowparnika.com

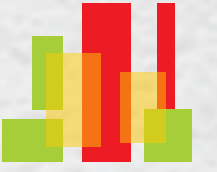
This brochure is conceptual in nature & is by no means a legal offering.
The promoters have the right to change, alter or add any specifications mentioned herein.

RERA Reg. No.:PR/KN/170805/001131

brickwall.co.in



The door to delight is open.
Come in, have a glimpse of it...



SOWPARNIKA
Delivering Happiness

BANGALORE | MYSORE | TRIVANDRUM | COCHIN | THRISSUR | GURUVAYOOR | KOTTAYAM | CHANGANASSERY | COIMBATORE | TIRUPUR

5000+ SATISFIED
CUSTOMERS

30+ COMPLETED
PROJECTS

25+ ONGOING
PROJECTS

30+ LAKH SQ. FT.
DEVELOPED

35+ LAKH SQ. FT.
UNDER
DEVELOPMENT

3 STATES
PRESENCE

Member
CREDAI
BENGALURU

SOWPARNIKA
Purple Rose



Hello and welcome to Sowparnika Purple Rose

Hi, I'm Sania and this is my home. Wait, this is not just a home but a delightful experience! Want to know how? Well, to begin with now I have a bigggg bedroom for myself with a view of rose garden from my window, and there is so much space around the home that horsing around and giving mommy a chase has become my favorite pastime. And, when I get bored indoors, I step out, and believe me, it's a whole new world waiting to be explored with so many amenities and so much of open spaces.

That's just what I say but Daddy says we are in a great location, at the heart of future development with awesome connectivity. Mommy says it's a dream come true to own such a quality home at an affordable budget. There is so much more to tell, but before that, let's go out and let me show you my home from outside.

That's Aster and that's where I live and

Daddy thinks that I can't point out my home from here, but I have proved him wrong. We have lot of open spaces to play. I have got a lot of friends too, and we make it fun every day. Do you want to join us and have some fun? Well, there are plenty of homes for you too, 369 to be specific, spread on 2.09 acres, built on 4 elegant towers called Aster, Begonia, Mabella and Sunshine. Talking about the location, it's an awesome location with great connectivity, located off Airport Road, near Whitefield. Oh, we also get a beautiful view of planes flying in the sky, remember, Airport is just 15 kms away from here..





That's my family, having some fun family time, a perfect click isn't it?



That's my mommy, working out at the fully equipped gym, doesn't she look gorgeous?



That's our security uncle, and he keeps us secure 24/7



That's my sister, showing her aces at Table tennis.

Snapshots of Delight

So, you saw my home, viewed the elevation. Now, let me tell you something about the amenities, there are 33 of them... Yes, you heard it right, there are 33 amenities designed to refresh and revive your lifestyle. Mommy says pictures can speak a thousand words, so just have a glimpse of my delights at Purple Rose.

Amenities

Children's play area | Swimming pool | Table tennis | Snooker / Billiards | Guest rooms | Jogging track | Vaastu compliant homes | ATM | Day care centre | Medical clinic and store | Restaurant | Flower and veg garden | Departmental store | Vegetable store/cool storage | Pets' clinic | Servants' room | Generator back up | Solar water heater | Laundry service | Car wash bay | Unisex saloon | Browsing / Wi-Fi | Intercom | Ambulance with driver around the clock | Sewage treatment plant | Pets' garden | Drivers' room | Covered car parking | Lifts



Uncompromised quality at an affordable budget

How would you feel if you get 3 chocolates for the price of 1 and tastes great too? Feels good right? Well, that's the feeling you get when you step into Sowparnika Purple Rose where you get a feeling of lavishness in every inch of space while being uncompromised on both budget and quality.

SPECIFICATION

Flooring

Vitrified Tiles for living, and dinning Ceramic tiles for all toilets, balconies, kitchen and utility areas

Kitchen

Polished Black Granite Counter top Wide loft in kitchen Standard size stainless steel sink with drain board Ceramic glazed tiles dado up to 2'0" ht above platform

Windows

Aluminium sliding windows with guard bars with plain glass for bedrooms

Walls

©BD painting for all interior walls and ceiling exterior wall surfaces painted with snowcem paint

Doors

Main door frames of Teak wood, Shutters of teak veneer and melamine polished Inside doors putty finished flush door, painted with superior quality enamel paint

Electrical

T.V. and telephone points in living room, Electrical switches of modular switches, One earth Leakage circuit Breaker (ELCB) for each flat, Earthing with copper wire using loop system.

Toilets

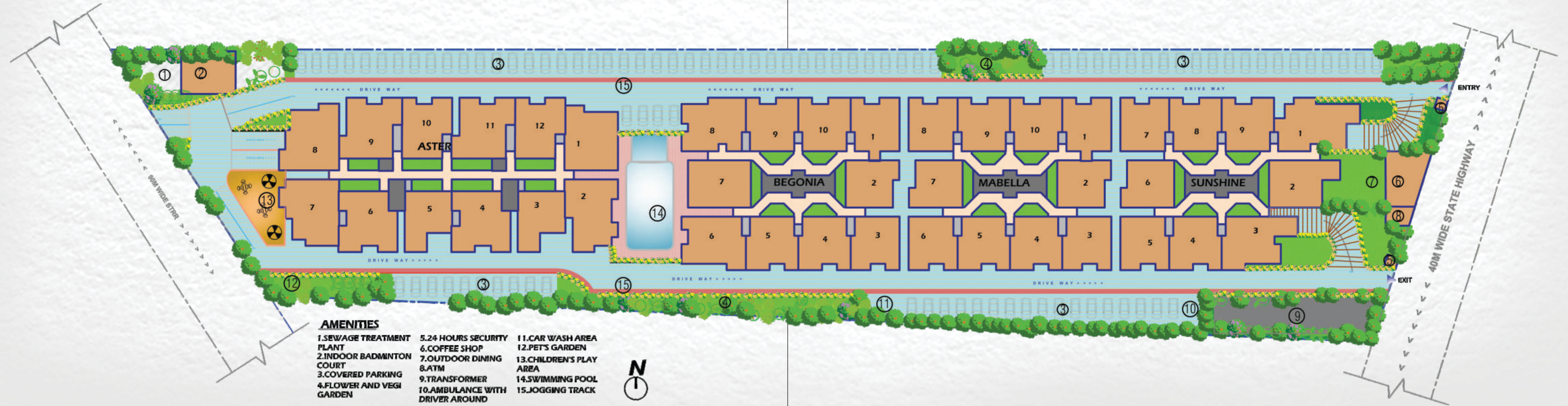
Pressure checked plumbing and drainage lines to ensure total leak proof toilets, JAQUAR basic or equivalent C.P. fitting, White colored Parry ware/Hindustan Sanitary Ware, Hot and Cold Mixer unit with overhead shower, Provision for geyser, Select glazed / ceramic tile dado up to 7' height



The Big Picture

2.09 acres of sprawling space, 4 elegant towers, 369 homes, 2 and 3 BHK dimensions, 24 different floor plans and 33 amenities, this is not just a Master Plan, this is a vision that brings together all elements of life!

Master Plan



AMENITIES

- | | | |
|---------------------------|----------------------------------|--------------------------|
| 1. SEWAGE TREATMENT PLANT | 5. 24 HOURS SECURITY | 11. CAR WASH AREA |
| 2. INDOOR BADMINTON COURT | 6. COFFEE SHOP | 12. PET'S GARDEN |
| 3. COVERED PARKING | 7. OUTDOOR DINING | 13. CHILDREN'S PLAY AREA |
| 4. FLOWER AND VEGI GARDEN | 8. ATM | 14. SWIMMING POOL |
| | 9. TRANSFORMER | 15. JOGGING TRACK |
| | 10. AMBULANCE WITH DRIVER AROUND | |



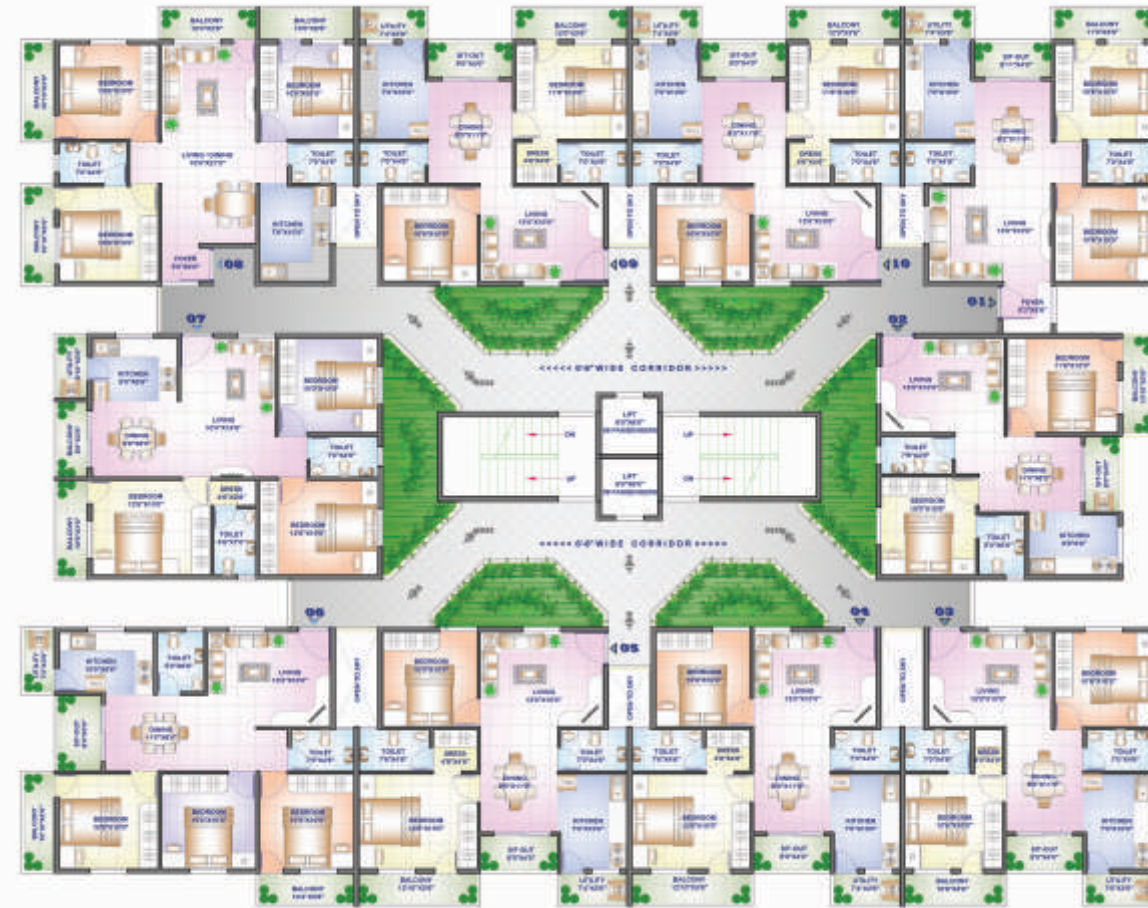
Meet my friends

By the way, have you met my friends? I guess not, let me introduce you to them.



“ This is Niki from Begonia and she loves the flower gardens next to her block ”

Begonia



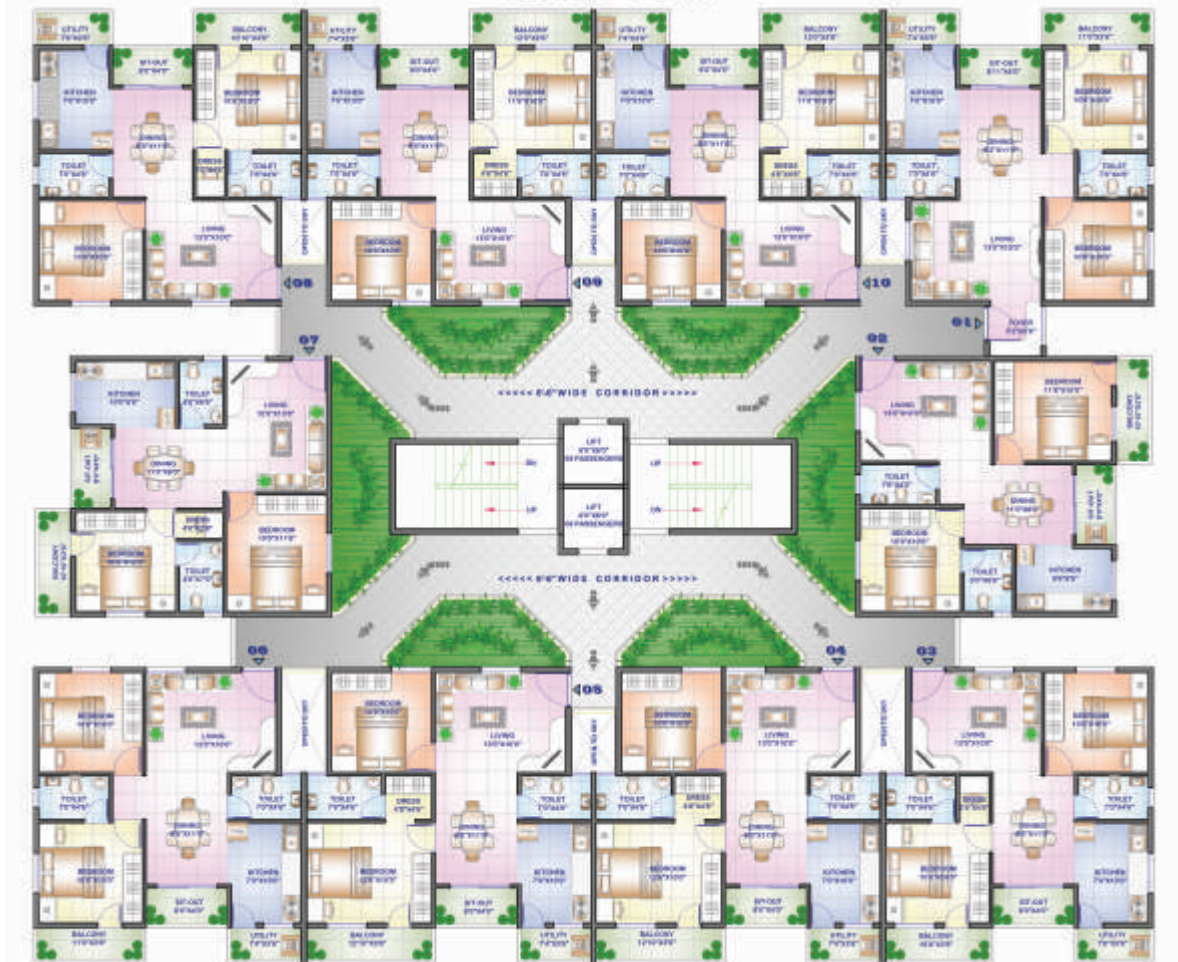
TYPICAL FLOOR PLAN COMBINATION OF 2 & 3BHK UNITS:

10units per floor 2BHK - SBA - 929sft to 1023sft, 3BHK - SBA - 1168sft & 1204sft



“ That's Richa and most times you will find her at the kid's play area near Mabella ”

Mabella



TYPICAL FLOOR PLAN 2 BHK UNITS: 10units per floor 2BHK units - 929sft to 1023sft



Sunshine



TYPICAL FLOOR PLAN COMBINATION OF 2 & 3BHK UNITS: 9units per floor 2BHK - 929sft to 1023sft, 3BHK - 1120, 1233 & 1357sft



“ Meet Rohan from Sunshine who loves to take a dip in the swimming pool ”



“ This is Aster, the sweetest of all 4 because I live here.... ”



TYPICAL FLOOR PLAN COMBINATION OF 2 & 3BHK UNITS: 12units per floor 2BHK - SBA - 952sft & 1078sft, 3BHK - SBA - 1257sft to 1365sft

Aster



Ideal location, convenient proximity and excellent connectivity

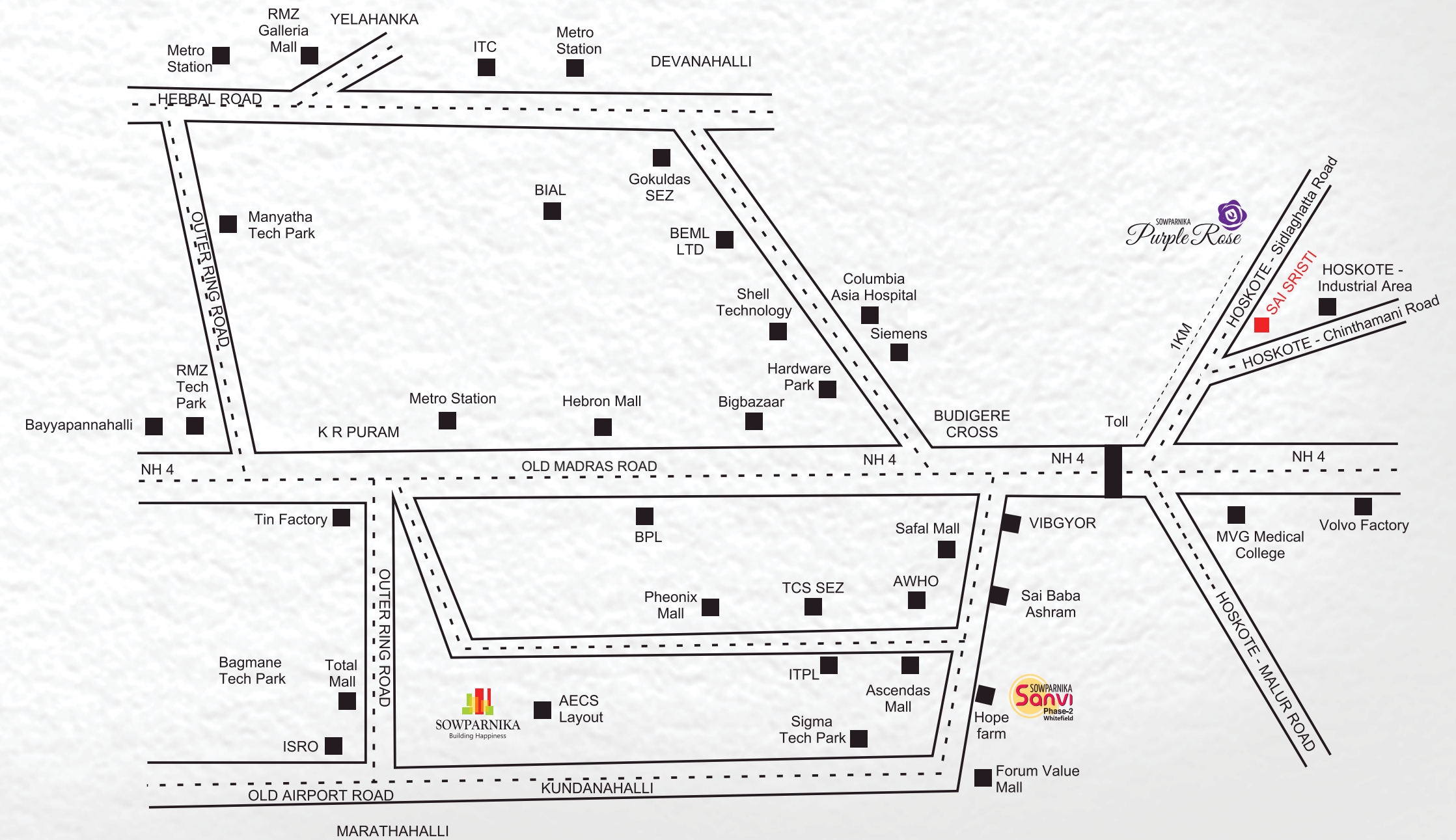


Daddy says it's a great location, just 15 minutes from his office, may be its true, because now my Dad comes home on time, every time, which means more time to play with Daddy! Mommy loves this place because of its proximity to shopping malls, healthcare facilities, educational institutions and many other key infrastructures.

Proximity

- 15 minutes drive from ITPL
- 20 minutes from KR Puram Railway Station
- 30 minutes from Bengaluru International Airport
- New arrival of Namma Metro up to Hope Farm
- Upcoming 1600 acres of SEZ Campus
- Close to NH4 and proposed Peripheral Ring Road
- Close to Satellite Township Ring Road
- Close to International Schools, Hospitals, Shopping Malls, Restaurants and other key infrastructures

Location Map



The future is here!

“ Mommy says it’s a great location to live and it is going to get even better very soon. ”

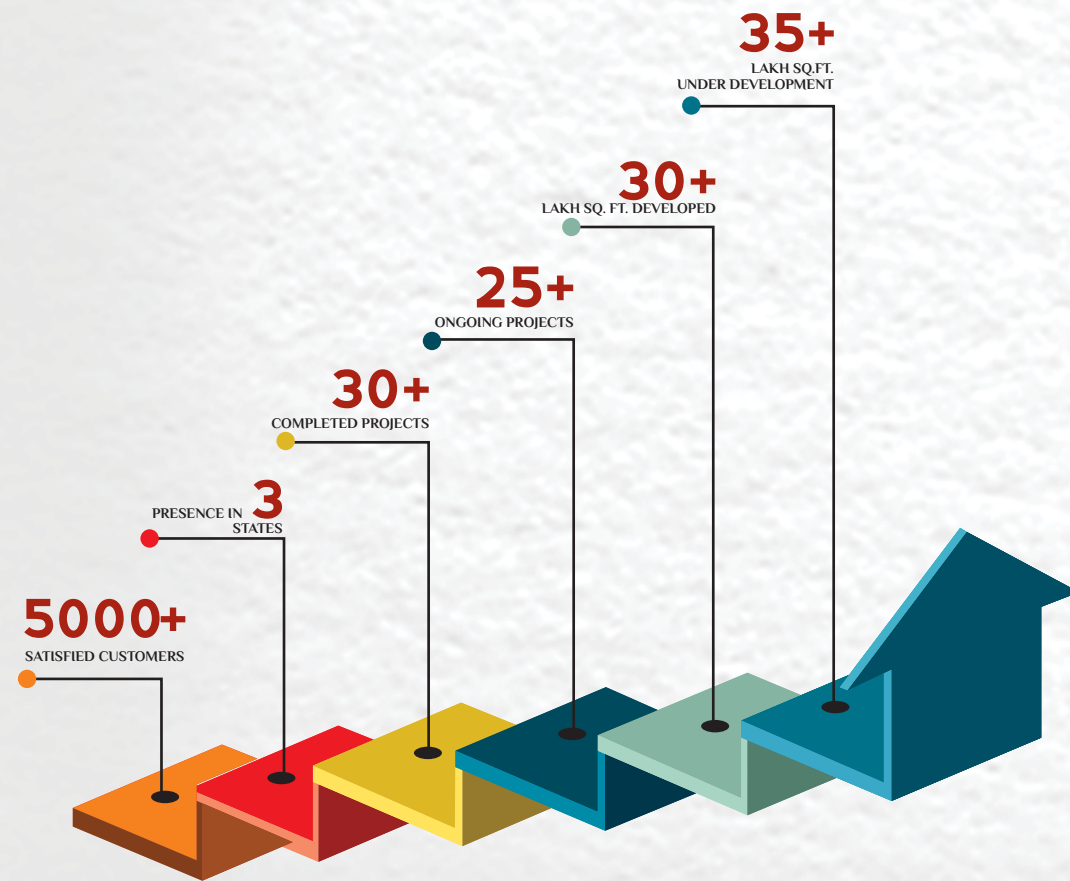
Bengaluru is constantly expanding and is exploring new avenues for development in outskirts of Bengaluru. Hoskote is one such location earmarked by capitalists, real estate developers and industrialists, largely due to the excellent connectivity, future development in progress and proximity to Airport. Hoskote, as a location, has all the potential to emerge as a satellite town in the near future. Owning a home at Purple Rose will serve your needs of living at the heart of development, quality construction and an ideal investment option, all this at a very affordable budget. Be a part of future at Purple Rose.



Ongoing Developments

- Numerous Residential Township by reputed builders
- BMR-STRR Bengaluru Metropolitan Region Satellite Town Ring Road
- BMR-PRR Bengaluru Metropolitan Region - Peripheral Ring Road
- SEZ – Special Economic Zone for IT and Electronic Hardware - Bagur Area
- Industrial Area - Auto Hub, Narsapur Phase II and 402 acres of Hoskote Industrial Area
- NH 207 Connectivity Link between Hoskote - Hosur – Devanahalli

“ My teacher says credentials bring out credibility, and we are proud to be a part of brand that has pioneered **Aesthetic and Affordable Living Spaces** ”



Sowparnika Projects and Infrastructure Private Limited is a leading property developer in South India, headquartered in Bengaluru with projects spread across Karnataka, Kerala and Tamilnadu. Sowparnika Projects have helped hundreds of people realize their dreams of owning a house and has achieved great ranking in construction history by providing “truly affordable” and “high quality” homes.

Over the past decade, Sowparnika has succeeded in realizing the vision of becoming a pioneering force in the industry by creating aesthetic and affordable living spaces. This advantage position gives it the drive and the much needed edge to move closer to the company’s mission – to provide quality housing options for the lower and middle class population in all the major Tier II and Tier III cities in India.

Sowparnika Projects - Kerala



Sowparnika Royal, Trivandrum



Sowparnika Navarathinam Pearl, Trivandrum



Sowparnika Natura, Thrissur



Sowparnika Elenia, Changanassery



Sowparnika Edifice, Thrissur



Sowparnika Atrium, Kochi



Sowparnika Valle, Kottayam



Sowparnika Sudarsanam, Thrissur



Sowparnika Vaishnavam, Trivandrum



Sowparnika Sandal Tower, Trivandrum



Sowparnika Highlands, Trivandrum



Sowparnika City Crown, Trivandrum



Sowparnika Shirdi Phase-2, Trivandrum



Sowparnika Regal, Trivandrum



Sowparnika River View Garden, Trivandrum



Sowparnika Promenade Square, Trivandrum



Sowparnika Shirdi, Trivandrum



Sowparnika Surya Kiran, Trivandrum



Sowparnika Travancore Heights, Changanassery



Sowparnika Cannary, Changanassery

Projects

“ Just like me at Purple Rose, there are many who are delighted across South India with Sowparnika projects. ”

Sowparnika Projects - Karnataka



Sowparnika Purple Rose, Bengaluru



Sowparnika Swastika-2, Bengaluru



Sowparnika Sanvi-2, Bengaluru



Sowparnika Tharangini, Bengaluru



Sowparnika Columns, Bengaluru



Sowparnika Blue Bells, Mysuru



Sowparnika Chandrakantha-1, Bengaluru



Sowparnika Chandrakantha-2, Bengaluru



Sowparnika Sanvi-1, Bengaluru



Sowparnika Ananda, Bengaluru



Sowparnika Sai Srishti, Bengaluru



Sowparnika Swastika-1, Bengaluru



Sowparnika Royale Splendour, Mysuru

Sowparnika Projects - Tamil Nadu



Sowparnika Beetel, Coimbatore



Sowparnika Skandagiri, Coimbatore



Sowparnika Sai Soukya, Tirupur

Awards and Recognitions

Affordable Housing of the Year – NDTV Profit – Real Estate Awards

Best Affordable Home 2012 – LIC HFL & Silicon India – Bangalore Real Estate Awards

Affordable Housing of the Year 2013

Best Residential Property of the Year 2013 – ET Now



CREDAI
BENGALURU