

*Where you Live is as Important as how you Live*



## About us

Sri Sreenivasa Constructions an ISO 9001:2008 company is one of the leading real estate developer in hyderabad which has established an impressive track record in construction of Residential and Commercial Buildings. Customer Satisfaction and quality work are the primary focus of the company.

With years of experience in the field of construction, we stand tall amongst our peers. The success of a company comes from the capable team leading it. The company employs the very best and nurtures talent. We strive hard for customers satisfaction and provide our clientele with innovative ideas and customized solutions.

We at sri sreenivasa are focused on creating quality residential spaces for you to live and enjoy every moment of life with your family. We meticulously plan using the best techniques, adopt latest technologies and deliver luxurious living spaces for a joyful and comfortable living.

Sri Sreenivasa's mission is to satisfy every customer's need at great value, delivering clients the utmost in comfort, spaciousness and functionality. Our ethical and professional approach has the advantage of immense customer trust that our company enjoys.

Sri Sreenivasa delivers extraordinary quality and structural durability with each and every project of ours delivered with passion.



## Welcome to Silver Oak

Silver oak is a multistoried building with exquisitely planned homes. It is truly for connoisseurs of good living. Fabulously designed apartments ready to offer you global lifestyle. Silver Oak takes you to a new level of living that matches your lifestyle.

It is equipped with all modern amenities, including Multipurpose hall, Gym, Indoor games, etc. Silver Oak offers 2BHK and 3BHK options of various dimensions.

Silver Oak is strategically Located on the Velachery - Tambaram main road.

## Overview

Total Land Area	: 14.25 grounds
Structure Details	: Basement + Ground + 9 floors 2 floors commercial, 8 floors residential
No. of Units & Areas	: 24 - 3BHK, 1435 sqft. - 1510 sqft. 56 - 2BHK, 1070 sqft. - 1145 sqft.
Estimated date of completion	: March 2016
Location	: Camp Road Junction, Velacherry - Thambaram Main Road, Selaiyur Village, Tambaram, Chennai.

# Specifications



■ **Rcc Framed Structure**  
To withstand wind & seismic loads.

■ **Super Structure**  
Solid Block Masonry in cement Mortar (1:6) Prop.

■ **Plastering**  
Two Coats of plastering with smooth finishing



■ **Doors**  
**Main Door**  
Teak wood frame & aesthetically designed shutter with melamine polishing and S S hardware of reputed make.

**Internal Doors**  
Sal / Engineered Wood (Moulded Frame & both sides Teak Veneer designed flush doors with reputed make S.S. hardware fittings.

**French Doors**  
UPVC Sliding Glass Door.

**Windows**  
UPVC Windows with safety grills.



**Paintings**  
■ **External**  
Two coats exterior Acrylic Emulsion paint of Asian Apex /ICI of weather shield or equivalent make over one coat of Texture Paint.

**Internal**  
Smooth Luppum finish with acrylic emulsion paints over a coat of primer.



**Flooring**  
■ Bed Rooms, Living, Dining & Kitchen  
Vitrified tiles of size (2ft\*2ft) Bathrooms & Balcony Acid resistant Anti skid Ceramic Tiles.



**Tile Cladding & Dadoing**  
■ **Kitchen**  
Glazed Ceramic Tiles dado up to 2ft height above kitchen platform.  
**Bathrooms**  
Glazed Ceramic tiles dado of Sonara/Kajaria or equivalent up to door height.



**Utility &Wash**  
Glazed Ceramic tiles dado up to 3ft height.

**Kitchen**  
Granite platform with Stainless steel sink with both Municipal & bore water connection & provision for Aqua guard.

**Utility &Wash**  
Provision for washing machine, wet area for washing utensils etc.



■ **Toilets**  
All Toilets shall consist of:  
Wash basin with half pedestal.  
Cascade with flush tank of Hindustan or equivalent make. Hot and Cold single lever diverter with overhead shower. Provision for geyser.  
All C.P. Fittings are chrome plated of Jaquar or equivalent make.

■ **Electrical**  
Concealed copper wiring through conduits for lights, fans, plugs.  
Power plug wherever necessary of Havells / Anchor or equivalent make.  
Power outlets for Air-Conditioners in All bed rooms.  
Power outlets for geysers in all Toilets.  
Power plug for cooking range chimney/refrigerator/ micro wave oven/mixer in kitchen.  
Plug points for T.V in Living and Master bedroom.  
Miniature Circuit Breakers (MCB) & ELCB for each distribution boards of Havells or equivalent make.  
All electrical accessories / Switches of Schneider or equivalent make.



■ **Tele-Communication**  
**Telephone-Point**  
In Master Bedroom and living Room. Intercom facility to all the Flats connecting to security and other common areas.

**Cable TV**  
Provisions for cable connection in Master bedroom & Living room.

**Lifts**  
Branded Lifts with entrance of Granite/Marble cladding.

**Generator**  
Acoustic enclosed D.G. Set, back-up 100% for common areas and 500 watts for 2 bedroom and 650 watts for 3 bedroom.



# Typical Floor Plan

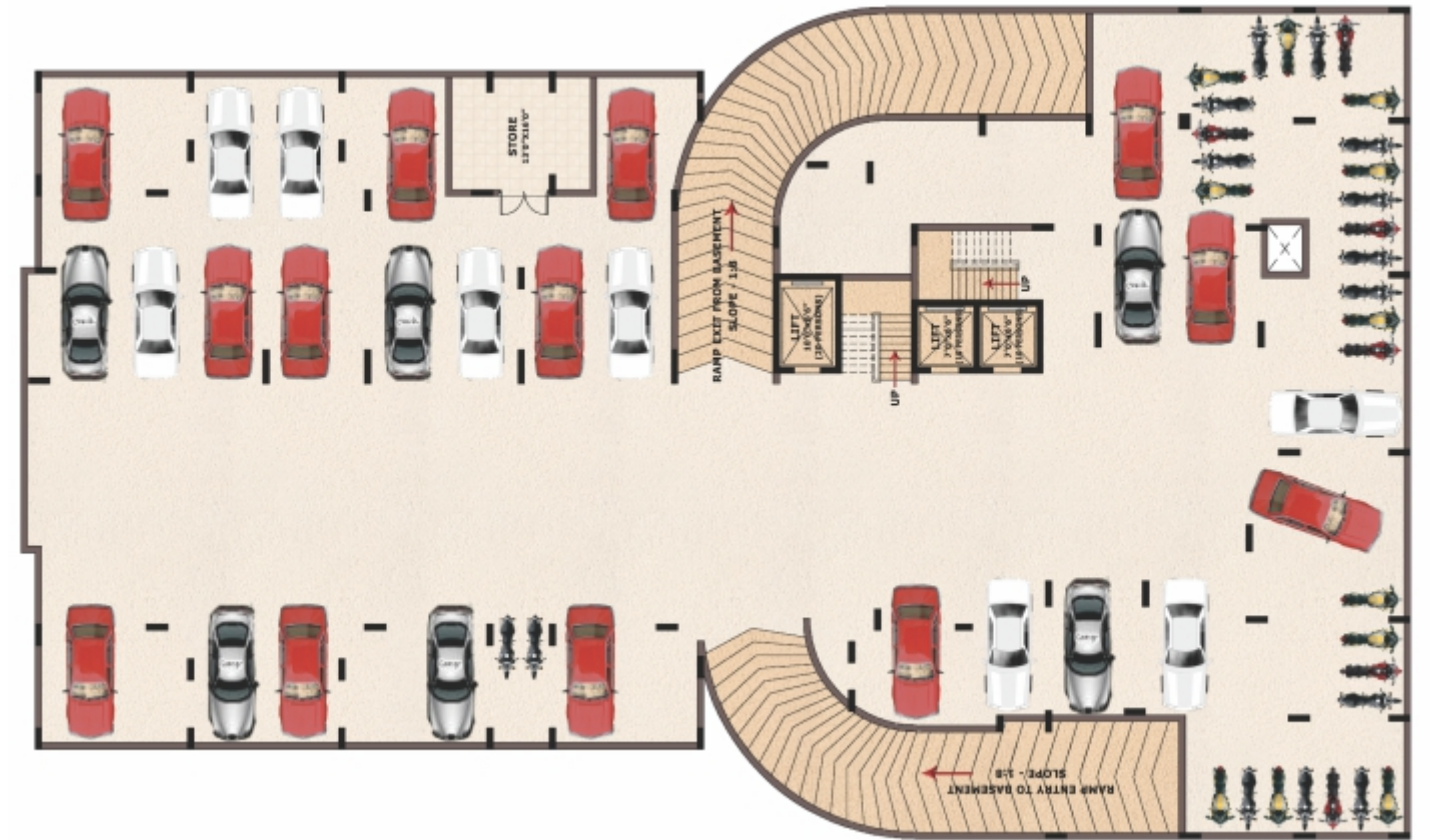
## Second to Tenth



NIGHT VIEW



Basement Floor Plan



Ground Floor Plan



MULTIPURPOSE HALL



GYM



INDOOR GAMES



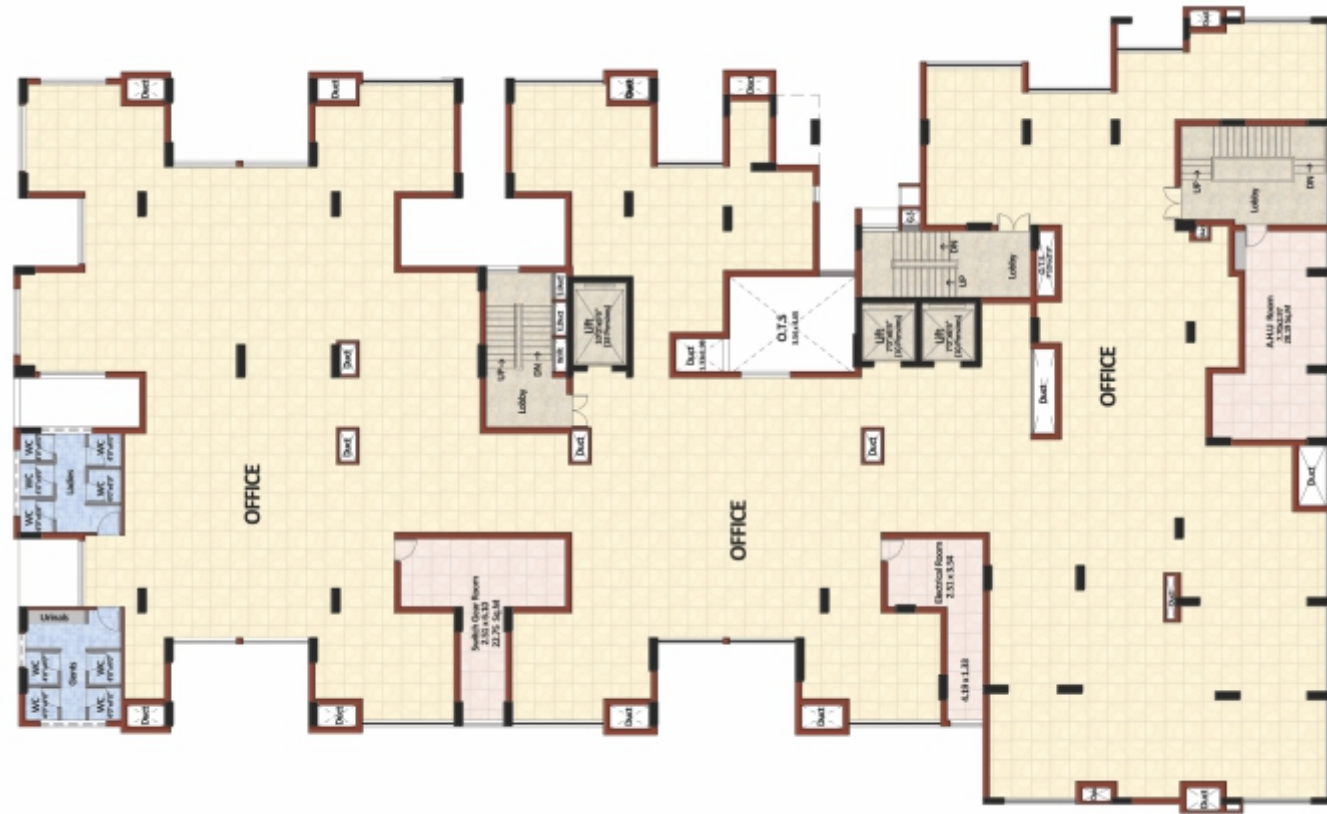
POWER BACKUP



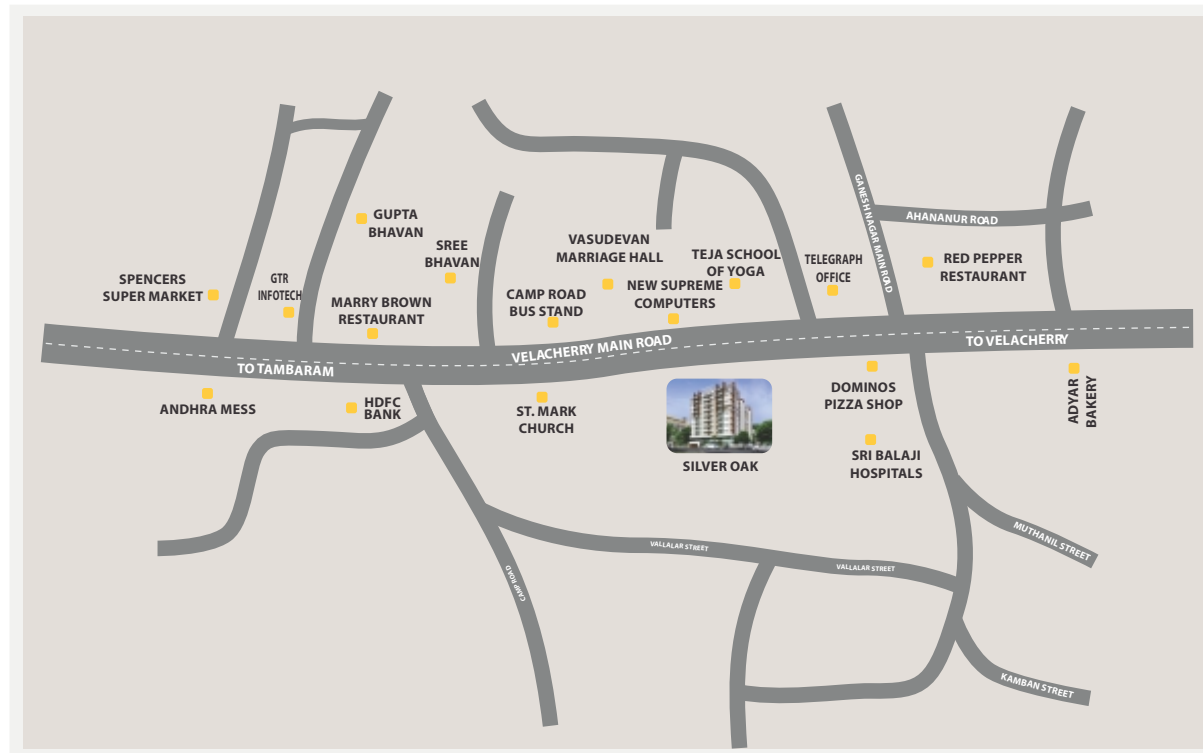
DTH Facility



## First Floor Plan



## Location Map



\*Map Not to Scale

## A Few Ongoing Projects of

Cyprus Palms @ Hyderabad



Built Up Area : 4.47 lakhs sqft

Maple Wood @ OMR, Chennai



Total Land Area : 1.43 Acres

Esmeralda Fortune @ Hyderabad



Built Up Area : 6.1 Lakh sqft (Approx)

## A Few Completed Projects of

Fortune Enclave @ Hyderabad



shot @ location

Built Up Area : 2.30 lakhs sqft

Fortune Heights @ Hyderabad



shot @ location

Built Up Area : 2.60 lakhs sqft

Fortune Towers @ Hyderabad



shot @ location

Built Up Area : 7.20 lakhs sqft

Fortune Nest @ Hyderabad



Built Up Area : 1.20 Lakhs Sqft

Fortune Bay @ Hyderabad



shot @ location

Built Up Area : 0.27 lakhs sqft

Imperial Towers @ OMR, Chennai



shot @ location

Built Up Area : 2.48 lakhs sqft



#### **CHENNAI OFFICE**

No.48, Velachery Tambaram Main Road,  
#2A, Natwest Vijay-Block IV,  
2nd Floor, Pallikaranai, Chennai - 100, India.  
Phone : +91 44 420 420 11/22  
Mobile : +91 98845 14104  
E-Mail : [chennai@srisreenivasa.com](mailto:chennai@srisreenivasa.com)  
Marketing Contact : +91 9962556696

Architects



#### **Anbu & Faisal**

# 43, Shop #S3, 2nd Floor, AmarSinder,  
Pantheon Road, Egmore, Chennai - 600 008.

#### **(HO) HYDERABAD OFFICE**

DSR Tranquil, Plot No.901,  
#201, Ayappa Society Main Road,  
Madhapur, Hyderabad-500081, India.  
Phone : +91-40-4270 0099  
Fax : +91-40-4008 8006  
E-Mail : [info@srisreenivasa.com](mailto:info@srisreenivasa.com)  
[www.srisreenivasa.com](http://www.srisreenivasa.com)

Legal Advisors :

#### **Rank Associates**

II, III & IV Floors, "Jains Anjana"  
No. 25, Bazullah Road, Chennai - 600 017.