

THE FUTURE IS CONFIDENT



**CORPORATE OFFICE: BANGALORE**

Confident House, 4, BTM Ring Road, 1st Stage BTM Layout, Bangalore- 560 068, Ph: +9180 4011 3333, +91 99 161 13333  
E-mail: sales@confident-group.com

**DUBAI**

Confident House,  
103, Oriental House- 1,  
Bank Street, Burdubai,  
Dubai, PO Box- 31599  
Ph: +971 43977747

**KOCHI**

Confident House, 868/2,  
S A Road, Vyttila,  
Kochi- 682 019,  
Ph: +91 484 4093333,  
+91 98959 04444,  
+91 98959 14444

**THRISSUR**

Confident House,  
11/605, Mathrubhumi Jn.,  
Veliyannur (PO),Thrissur- 680 021  
Ph: +91 487 2421407,  
+91 974616 4444  
+91 975617 4444

**TRIVANDRUM**

Confident Group,  
TC 13/1151 (7), Kannammoola,  
Medical College P.O, 695 011  
Ph: +91 471 4083333,  
+ 91 98955 13333  
+91 98955 23333

**CALICUT**

Confident House, 28/975,  
Thondayad Bypass Jn.,  
Calicut- 673 017  
+91 8129 32 1111  
+91 495 309 3333



**CONFIDENT GROUP**®

www.confident-group.com  
THE FUTURE IS CONFIDENT

**No.1 SELLING BRAND IN KERALA + KARNATAKA**

This Brochure is purely conceptual and does not constitute a legal offering. The promoters/developers reserve the right to alter / delete / add specification or design mentioned herein.



A REMARKABLE  
SYMBOL OF  
**LIFE**





# CHANGE YOUR LIFE!

Change is everywhere and the lifestyle around is also evolving. Confident group is taking an extra step to redefine your living with a combination of luxury and nature. Confident Phoenix, the beginning of a new life...

Amenities that take care of your needs and features that fulfill your dreams are something that makes Confident Phoenix unique. Here you will feel the serenity of living and a glimpse of change everywhere. Confident Phoenix- for those who love a new life.

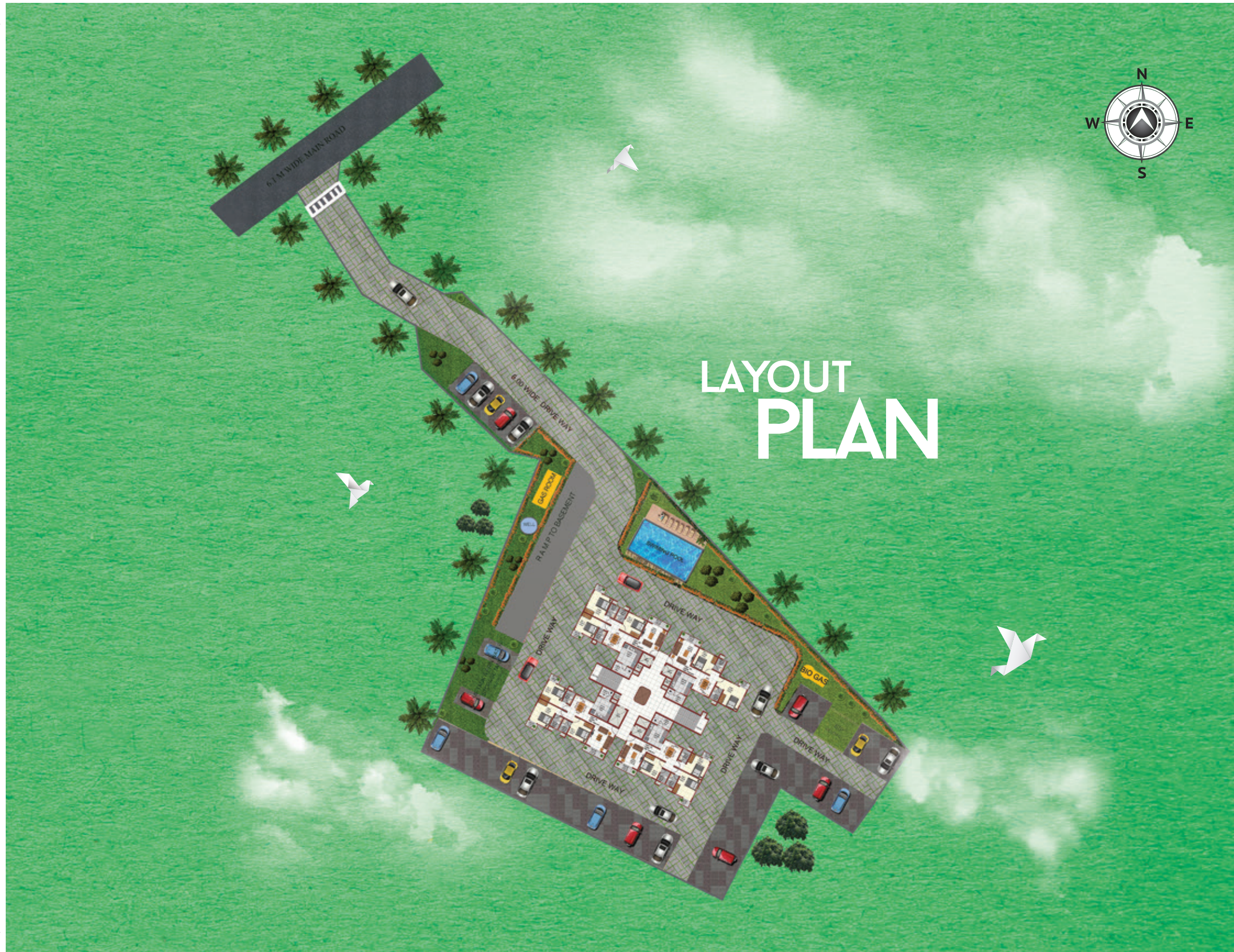


# LIFE, JUST A DECISION AWAY!

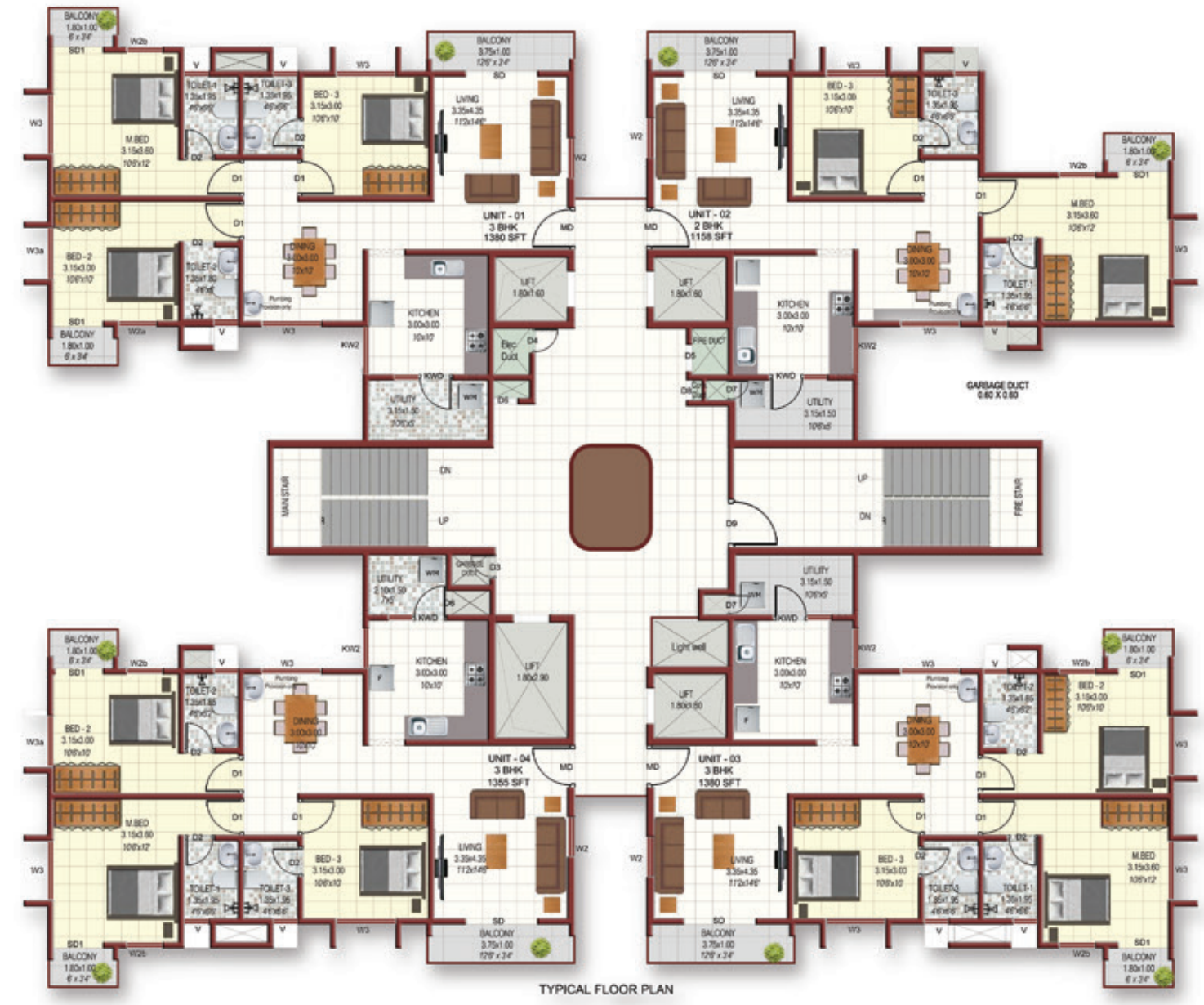
Confident Phoenix, an architecture marvel emerging at Methottuthazam, gives you the chance to live life in full. The tranquility around, proximity to the city and its services, and the upcoming IT projects nearby transforms the living here. Confident Phoenix is a futuristic space which harmoniously accommodates luxury and nature. The face of Malabar is changing, so don't miss the chance to be a part of it. Now the distance between you and life is just a decision away.



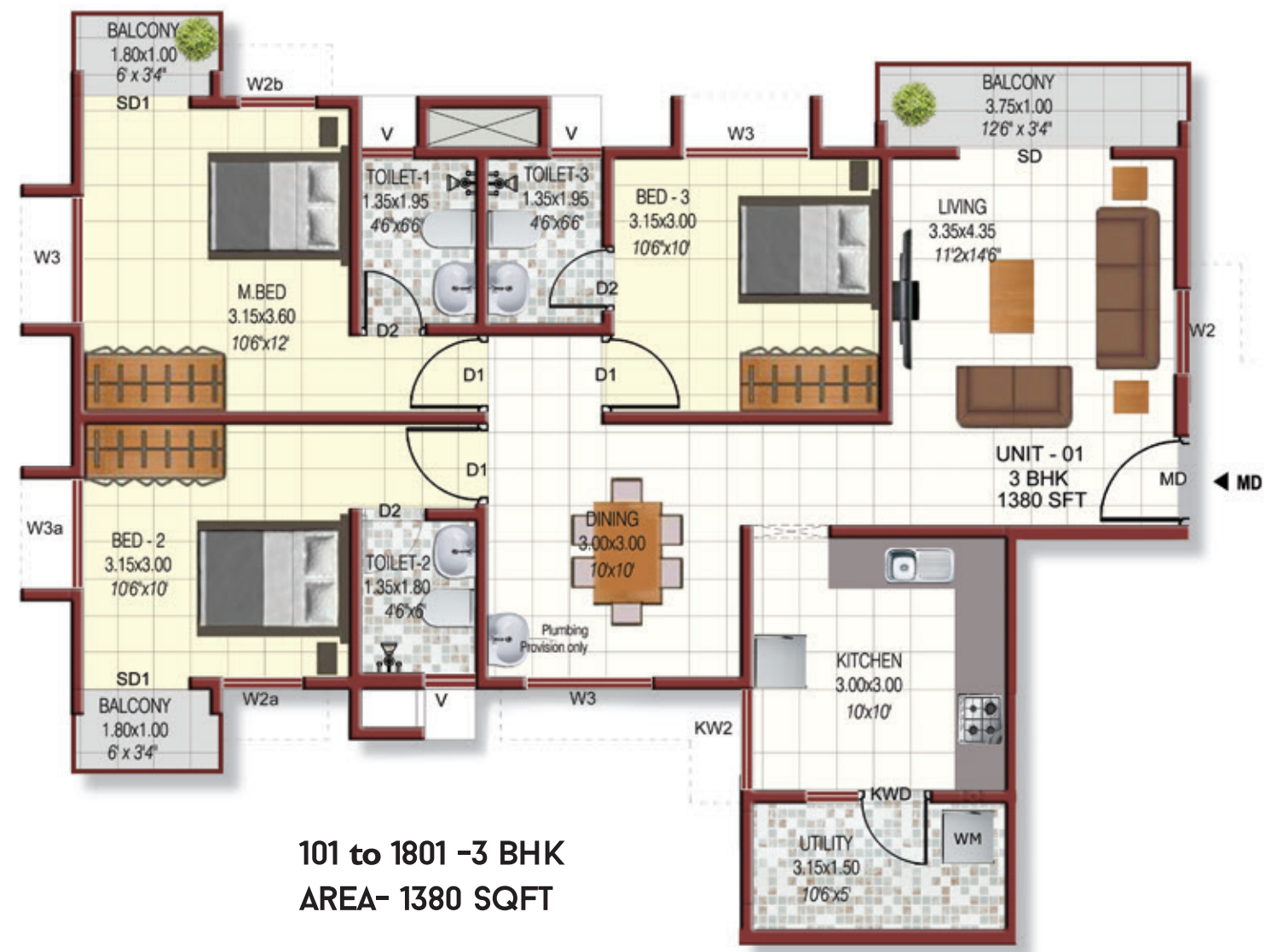




## TYPICAL FLOOR PLAN







101 to 1801 -3 BHK  
AREA- 1380 SQFT



102 to 1802 -2 BHK  
AREA- 1158 SQFT





103 to 1703 -3 BHK  
AREA- 1380 SQFT



104 to 1804 -3 BHK  
AREA- 1355 SQFT



## AMENITIES

- 1) Swimming pool
- 2) Multipurpose gym
- 3) Card & Games room
- 4) Table Tennis
- 5) Broadband
- 6) Reception
- 7) Kid's play area
- 8) Intercom facility
- 9) Visitor's car park
- 10) Automated Shoe shiner
- 11) Wi-Fi
- 12) Centralised gas system
- 13) Conference room
- 14) 24 hours security
- 15) Underground electrification
- 16) Sewage treatment plant
- 17) 1 KVA power backup for each flat



## SPECIFICATIONS

- 1) **Structure:** Built on solid foundation, the sturdy framed structure with columns and beams provides a secure frame work for the entire building.
- 2) **Wall:** Concrete blocks/bricks protect you from nature's harshest elements.
- 3) **Electrical Concealed:** Conduits with high grade copper wire connections for 24/7 safety and adequate points for power and lighting, provisions for split A/C in all bed rooms keep your apartment at optimum temperature, and keeps you cool in the summer heat.
- 4) **Painting (Internal):** Premium emulsion roller finished paint with cheerful colours that add colours to your lifestyle.
- 5) **Painting (External):** Good - quality weather shielded paints keeps your investment looking as good as new.
- 6) **Switches:** Sophisticated and trendy looking modular/equivalent switches lights your world with joy.
- 7) **Doors (Main Door):** Sturdy wooden door with sparkling stainless steel fixtures and branded locks that protect a world of happiness inside.
- 8) **Doors (Internal):** Prehung skin doors from Jacson/Equivalent.
- 9) **Windows:** Latest trend high quality aluminium windows with 4mm thick plain headed glass allows maximum utilisation of natural light.
- 10) **Flooring:** Vitrified tiles for living, dining and bed rooms, kitchen and toilet flooring with top grade ceramic tiles. Ceramic /Equivalent tiles for common area.
- 11) **Dado tiling:** 2 feet height & 7 feet height wall adorned glazed dado tile in kitchen & toilets respectively makes maintenance and cleaning a breeze.
- 12) **Sanitary Fixtures:** Hindware/Cera/equivalent sanitary fixtures compliment the rest of your dream home.
- 13) **CP Fittings:** Convenient and fashionable top of the line chromium plated Cera/equivalent tap fittings for bed rooms and kitchen.
- 14) **Cooking Platform:** Classy granite slab for cooking platform, having trendy stainless steel sink with drain board.
- 15) **Water Supply:** Underground and Overhead Storage tanks of suitable capacity in addition to water source from captive well means no more water worries.
- 16) **Sewage System:** Safe environment friendly sewage treatment plant (STP) for apartments that are harmonious with its surroundings.
- 17) **Centralised Gas connection:** Centralised Gas Connection will provide a safe and hazard free environment in your dream home.
- 18) **Intercom Facility:** This facility helps to keep the community united.

## LOCATION MAP



## DISTANCE TO MAJOR LOCATIONS

BYPASS	- 800 m
SCHOOLS	- 800 m
TEMPLE, MOSQUE, CHURCH	- 800 m to 3 km
CYBER PARK	- 1.00 km
PETROL PUMP	- 2.5 km
MAVOOR ROAD	- 1.80 km
MAJOR HOSPITALS	- 2.5 to 4.5 km
MAIN BUS STAND	- 4.00 km
BEACH	- 7.00 km
RAILWAY STATION	- 6.00 km
AIR PORT	- 21.00 km