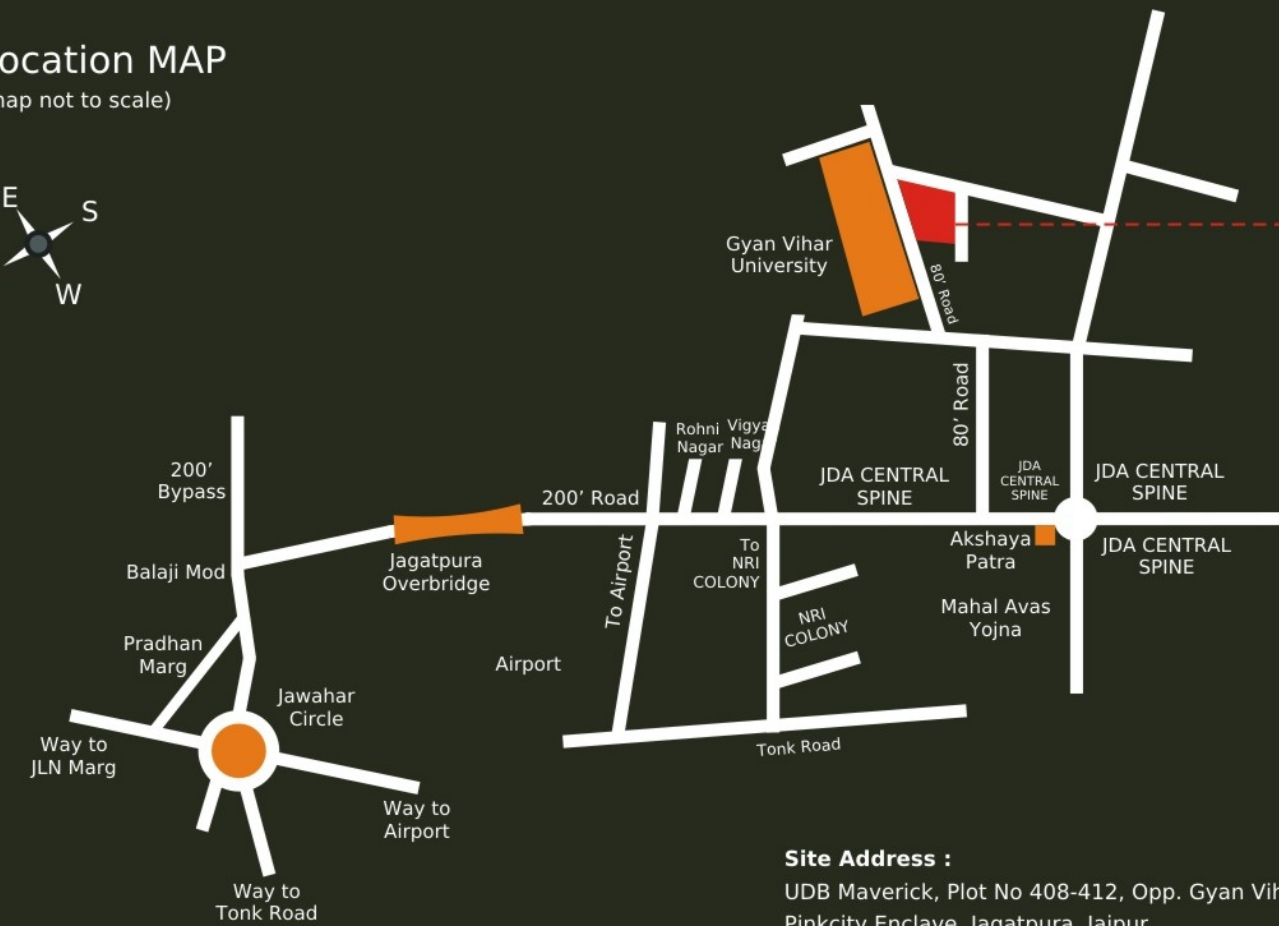


# Location MAP

(map not to scale)



### Site Address :

UDB Maverick, Plot No 408-412, Opp. Gyan Vihar University, Pinkcity Enclave, Jagatpura, Jaipur



A Venture of :

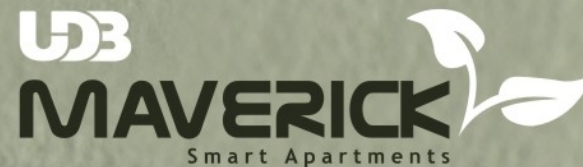


UNIQUE DREAM BUILDERS PVT. LTD.

C-116, Janpath, Behind Vidhan Sabha, Jaipur - 302 015, Rajasthan (India)

Telefax : +91 141 4077000 • Email : info@udb.in • website : www.udb.in

sms UDB to 56969



Your **ADDRESS** for Lifetime.

“ Finding a  
 lifetime of  
 joy is quite  
 another... ”

Truly majestic, aesthetically designed exteriors very effortlessly extend a hint of what resides beyond. A perfect foreword to and experience. The intrigue gets further heightened when the impeccable planning embodied in that gracious structure surfaces to amaze your being.



## project overview

### project HIGHLIGHTS

- 108 Premium residential flats
- 1 BHK / 2 BHK / 3 BHK apartments
- Well spacious & Ventilated apartments
- 3 side road around the building.
- 24 Hours water supply
- 100% power backup for Common and essential service areas
- Rain Water harvesting
- 3 nos passenger lifts
- Ample Open / Basement car parking
- Earth quake resistant structure
- 24 Hour Hi-tech security with CCTV
- Wi-Fi Internet Connectivity
- Ecological commitments
- Sewage treatment plant
- Ultra Modern landscapes

### exclusive FEATURES

- Impressive lift lobby
- library lounge space
- Fitness Centre / Gym
- Indoor games room like pool table, air hockey
- Basketball Zone
- Cricket Pitch / Net

### location ADVANTAGES

- Situated on the prime location at Jagatpura opposite Gyan Vihar University.
- Premium location near by the prestigious Hospitals, Education & Govt. institutions.
- Surrounded by prestigious commercial projects in close vicinity.
- Prestigious learning centres located within a 1km radius.
- 15 min. Drive from Ajmeri Gate / M.I. Road/ Civil Lines.
- 5 Min. drive from Airport.

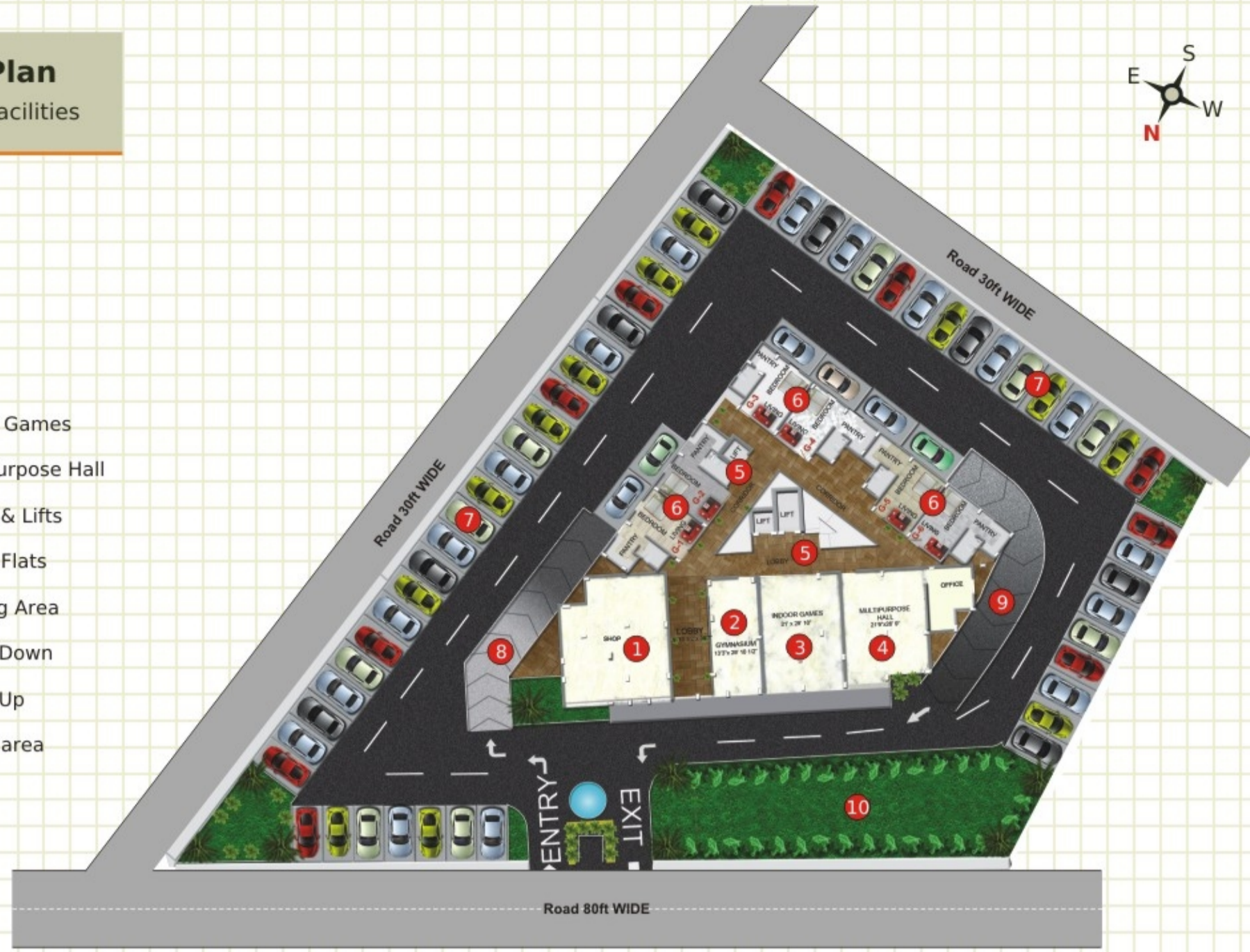
### SPECIFICATIONS

- **Special Feature** : Spacious balcony with each flat, Low maintenance charges, quality lifts.
- **Finishing** : Exclusive designer vitrified flooring in drawing, dining area and bed rooms, POP finish on wall and ceiling with cornices, (Interior : Oil bound distemper / exterior : long lasting weather resistant paint)
- **Wood Work** : Wooden main door, tough ISI mark flush door, brass / chrome hardware, glass windos, weather resistant paint for all doors.
- **Kitchen** : Kitchen counter top in polished granite, 2'-0" tiles DADO above the counter, anti scratch stainless steel sink with hot & cold water mixer.
- **Electrical** : Premium quality switches & accessories, TV/Telephone/ A.C./Cooler point in all rooms at appropriate places, power backup for lift, water pump and common areas.
- **Water Supply System** : 24 Hrs. water supplies
- **Toilet** : Designer ceramic glazed tiles, premium grade C.P. fitting, anti-skid tiles on flooring, branded sanitary ware
- **Security** : Round the clock security, Sound security system.



# Ground Floor Plan with Parking Area & Facilities

1. Shop
2. GYM
3. Indoor Games
4. Multipurpose Hall
5. Lobby & Lifts
6. 1 BHK Flats
7. Parking Area
8. Ramp Down
9. Ramp Up
10. Green area



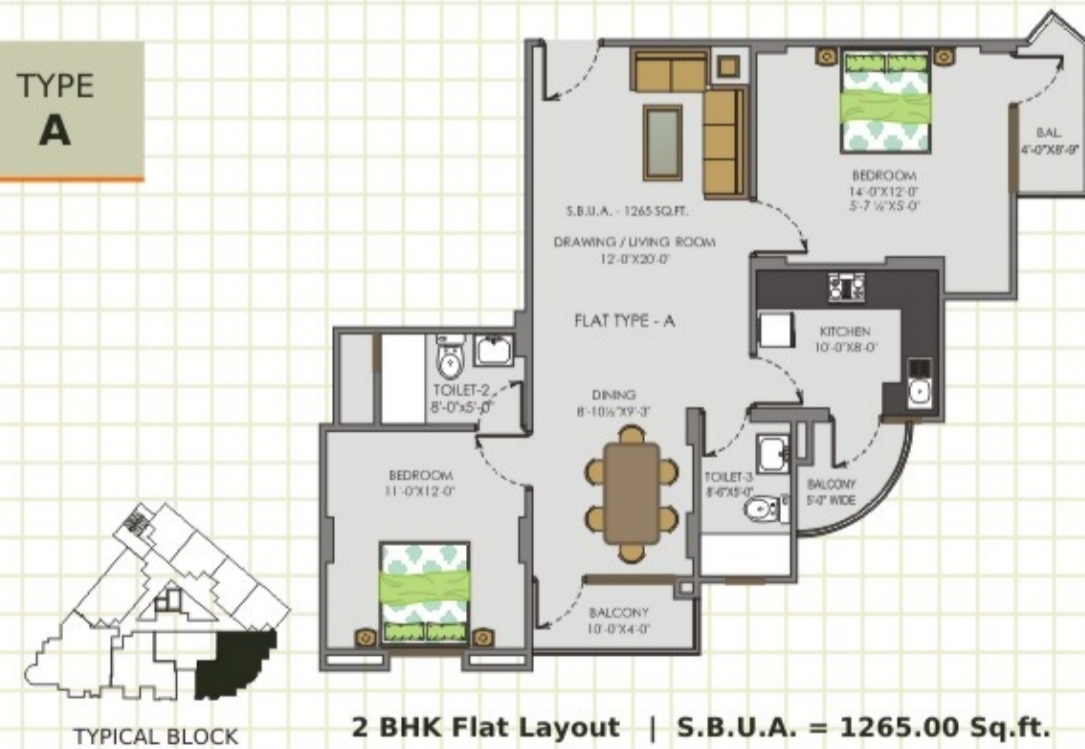
FLAT NO.	G-1	G-2	G-3	G-4	G-5	G-6	SHOP
FLAT	1 BHK	1 BHK	1 BHK	1 BHK	1 BHK	1 BHK	-
SBUA (SQ.FT.)	426.00	426.00	369.00	424.00	424.00	426.00	1273.00

# Typical Floor Plan (1st to 3rd Floor)

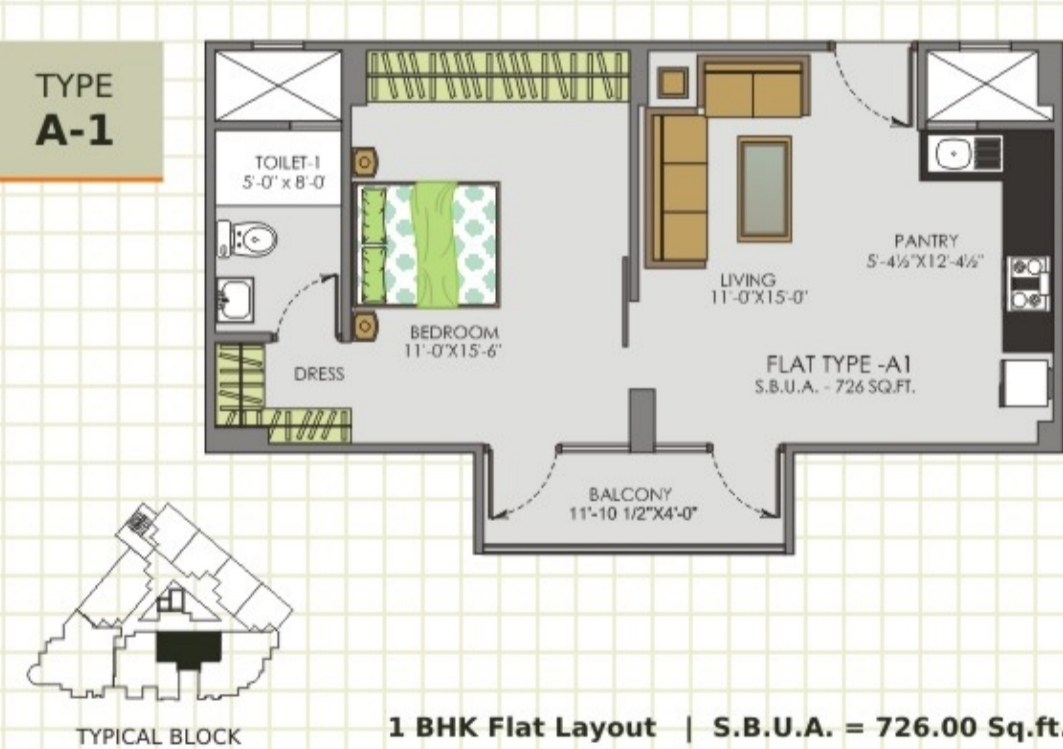


	A	A-1	A-2	B	B-1	C	D	E	F	G
1st to 3rd Floor	2 BHK	1 BHK	3 BHK	2 BHK	3 BHK	3 BHK	2 BHK	1 BHK	1 BHK	1 BHK
FLAT NO.	101-301	102-302	---	103-303	---	104-304	105-305	106-306	107-307/108-308	109-309
SBUA (SQ.FT.)	1265.00	726.00	---	1123.00	---	1714.00	1132.00	570.00	565.00	562.00
4th to 6th Floor	2 BHK	1 BHK	3 BHK	2 BHK	3 BHK	3 BHK	2 BHK	1 BHK	1 BHK	1 BHK
FLAT NO.	401-601	402-602	---	403-603	---	404-604	405-605	406-606	407-607/408-608	409-609
SBUA (SQ.FT.)	1265.00	726.00	---	1123.00	---	1747.00	1132.00	570.00	565.00	562.00
7th & 8th Floor	---	---	701-801	---	702-802	703-803	704-804	705-805	706-806/707-807	708-808
SBUA (SQ.FT.)	---	---	1340.00	---	1497.00	1747.00	1132.00	570.00	565.00	562.00
9th & 11th Floor	---	---	901-1101	---	902-1102	903-1103	904-1104	905-1105	906-1106/907-1107	908-1108
SBUA (SQ.FT.)	---	---	1340.00	---	1497.00	1714.00	1132.00	570.00	565.00	562.00
12th Floor with Terrace Area	---	---	1201	---	1202	1203	1204	1205	1207,1207	1208
SBUA (SQ.FT.)	---	---	2010.00	---	2245.50	2571.00	1698.00	855.00	847.50	843.00

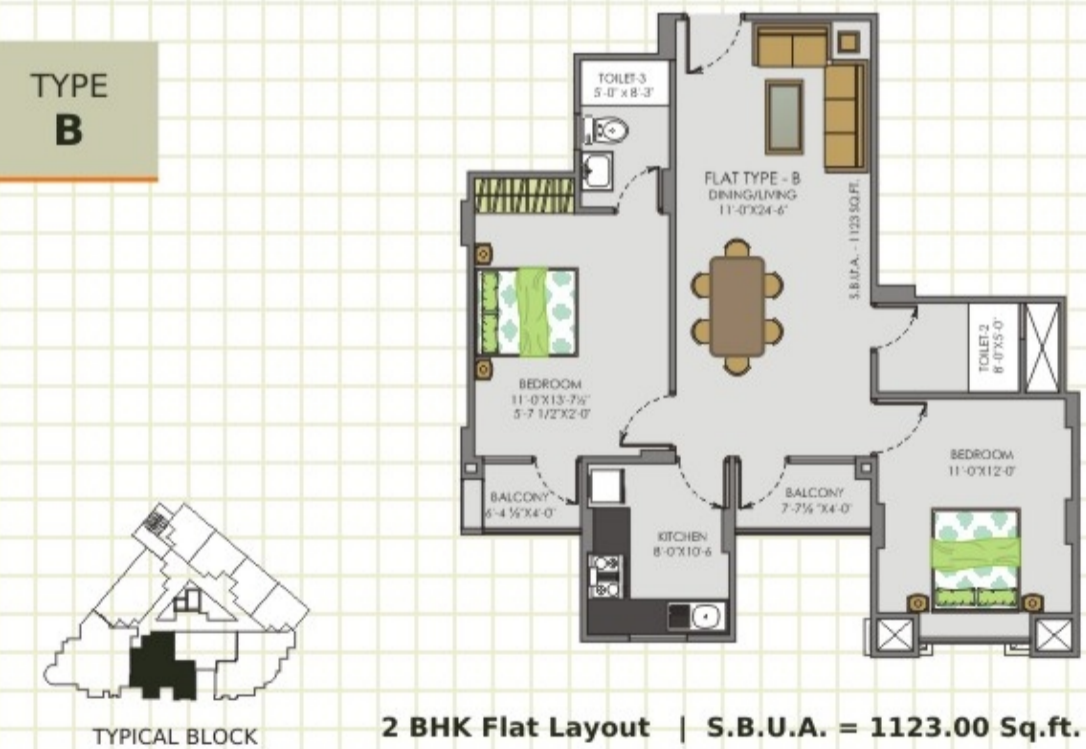
## TYPE A



## TYPE A-1



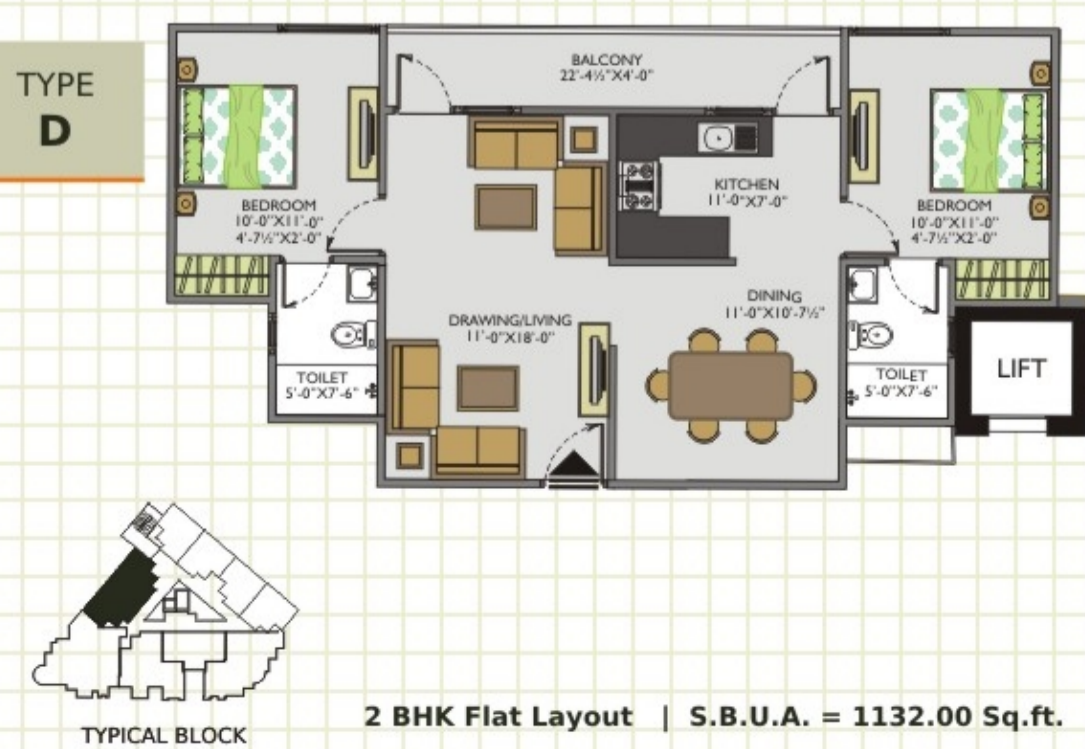
## TYPE B



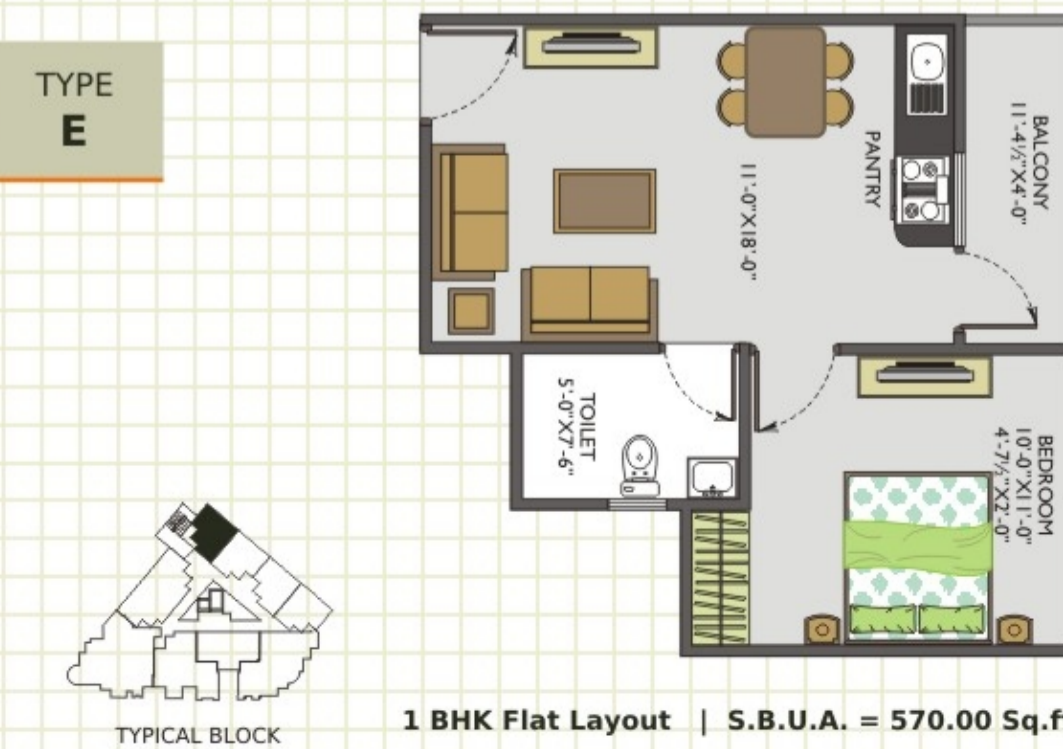
## TYPE C



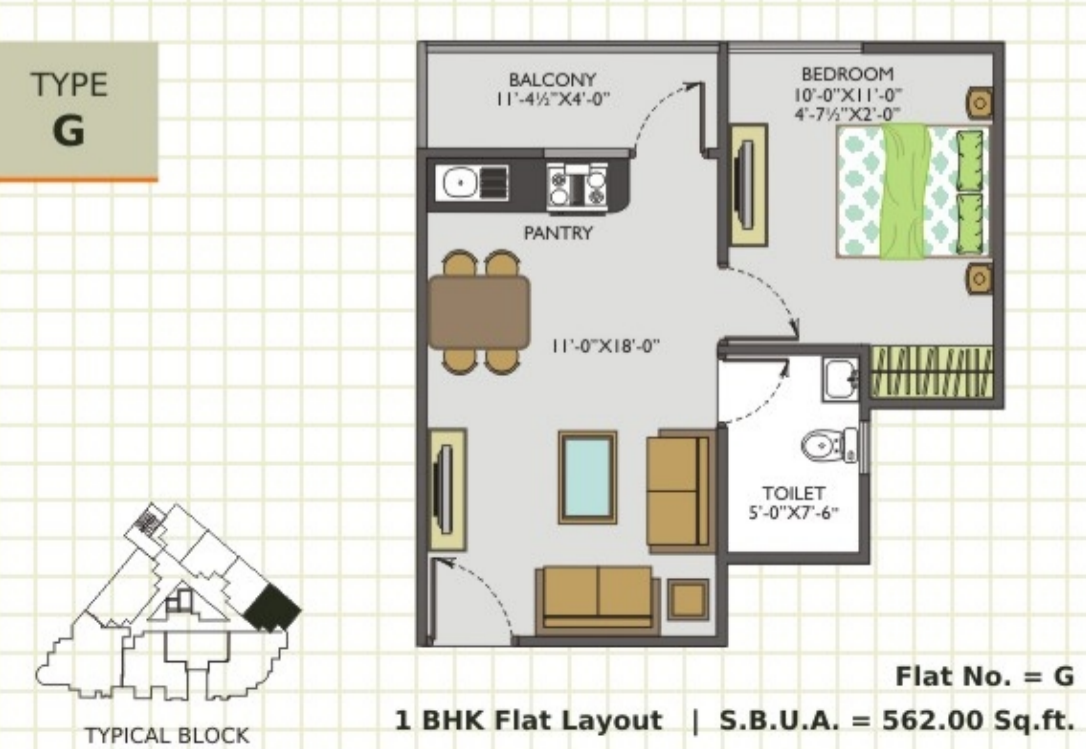
## TYPE D



## TYPE E



## TYPE G



## TYPE H

