

aakriti
greens
residential flats





- Site Address : Gram Saliya, Bhopal, Call : 9826823660
- Corporate Office : F-11, 206, Shristi complex, M.P. Nagar, Zone-1, Bhopal-11, Tel. : 2573954, 2763653, Fax : 4270084,
- Visit: www.theaakritigroup.com, E-mail : adplbhopal@rediffmail.com

All perspectives and dimensions are indicative and may change. The developer reserves the right to amend plans and specifications as may be required.
Any information contained in the brochure is subject to change without prior notice at the sole discretion of the developer and can not form part of any agreement.



You will surely enjoy
your moments at Aakriti Greens.

The background is a rich, vibrant green with a subtle diagonal gradient from the top-left to the bottom-right. It features a fine, textured pattern that resembles a close-up of a leaf or a woven fabric, with light and dark green threads creating a sense of depth and movement.

Life amidst
joy and nature



Enjoy peaceful surroundings at Aakriti Greens

*I*n all the Aakriti Group projects, environmental care is always a big speciality.

Aakriti Greens is an apartment project by Aakriti group. Spread on an area of 11.22 acres, Aakriti Greens comes with many modern day amenities, while retaining the natural beauty of the location. The project is located on a completely pollution-free and noise-free area, just 500 meters from the popular Aakriti Eco-City. Well-connected with the city and having all the facilities like schools, colleges, shopping centres and railway station close by; living at Aakriti Greens is completely stress-free and uncomplicated.



Aakriti Group's projects always respect the environment.

*W*hether a small apartment project or a mega township, Aakriti Group has strictly adhered to eco- friendly practices in all its projects. This is the reason why every project by Aakriti group is more than just concrete structures. It is pure bliss!

Aakriti Group has maintained strict transparency and commitment in all its projects. This legacy will be witnessed in the group's future projects as well. It is this philosophy of strict customer focus that has endeared the group to a large buyer segment.

Widely respected for its corporate values, Aakriti Group is planning to enter into a variety of diverse sectors like highway construction, tourism and power.

Life is full of joys at Aakriti Greens

*J*oy, comfort and peace of mind are what every resident wants from his home. Aakriti Greens is designed to take care of all your wishes. When it comes to buying a home, possession time line is the most important concern of every customer. Aakriti Greens guarantees possession within 1 year of booking. Living here will really be an enjoyable experience for your family.



aakriti
greens
residential flats

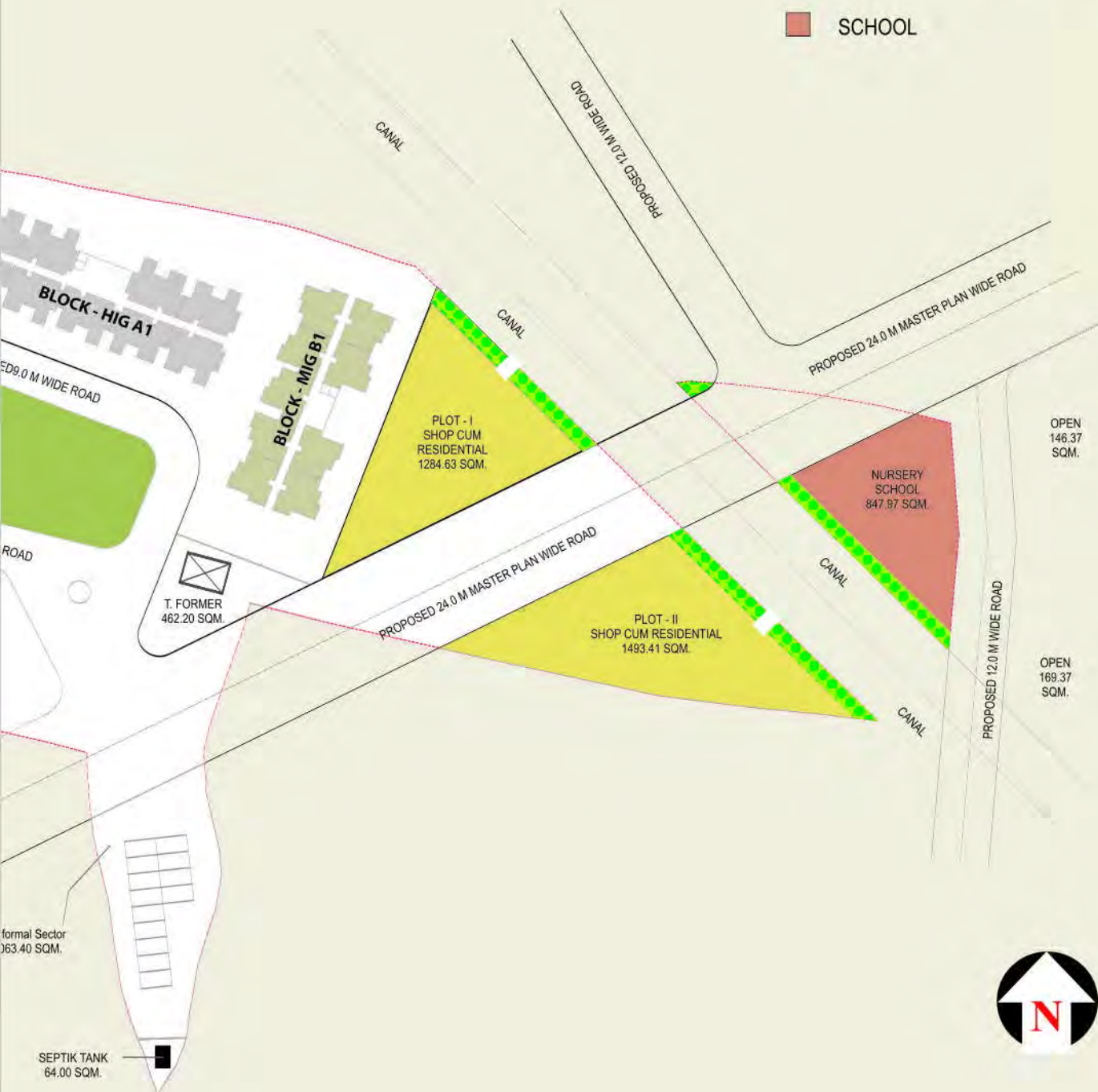




LAYOUT PLAN

- Distance between 2 adjacent towers is 10.50m
- Distance of Tower from the road 6.0m

- MIG APARTMENTS
- HIG APARTMENTS
- GARDENS
- SHOPPING CUM RESIDENTIAL
- SCHOOL



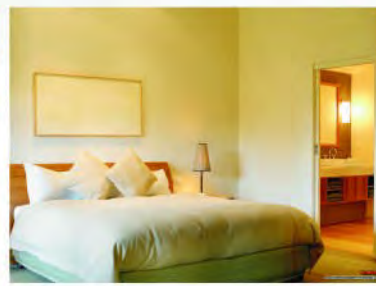
You will love to design every corner of your home.



Lavish Drawing Room



Modern Washroom



Spacious Bedroom

Premium amenities make
life at Aakriti Greens simply great!



Primary School



2 lifts with power back-up
in each block



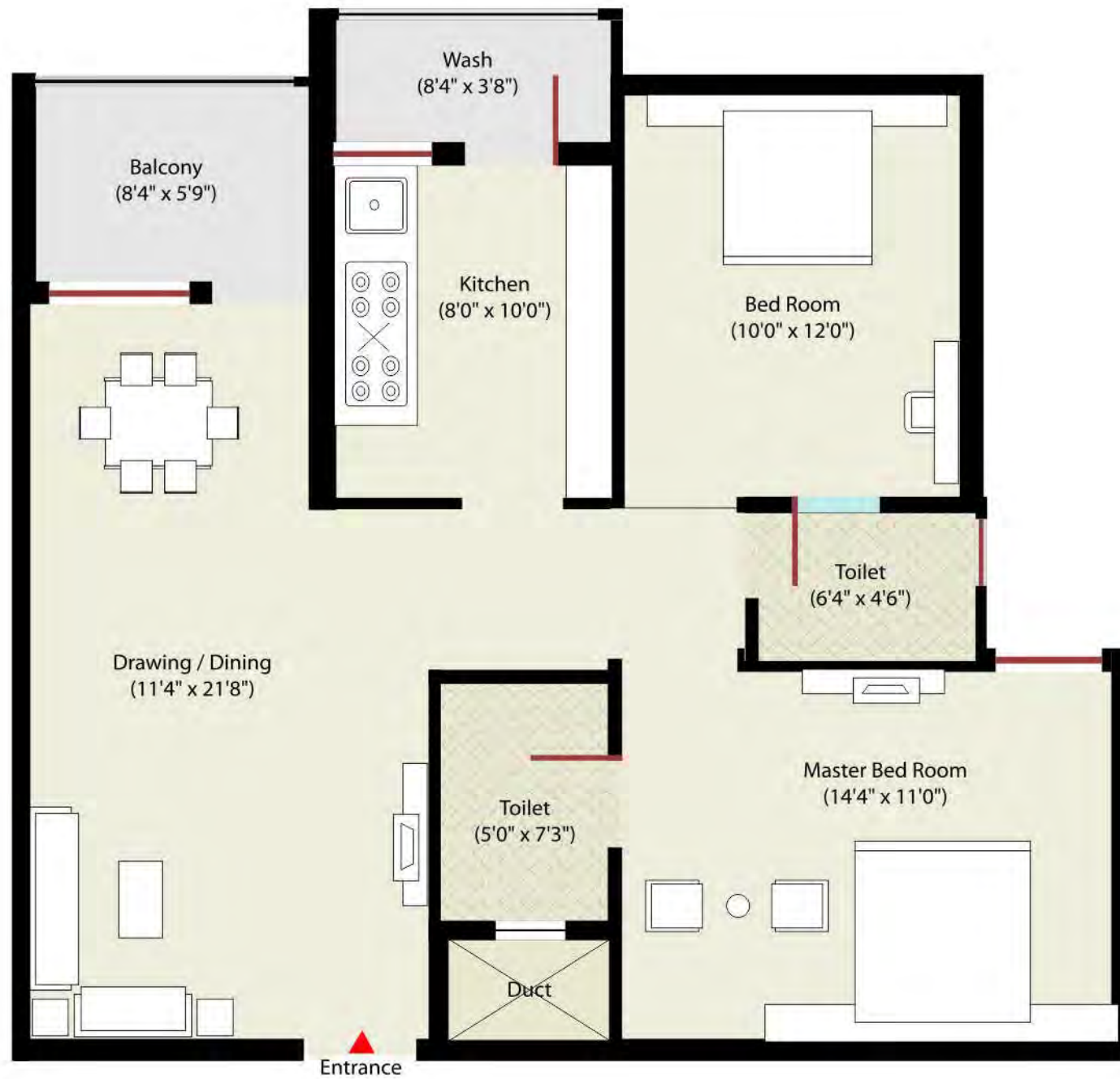
Garden



Cement Concrete Road

Floor Plan for MIG (2BHK) Dream Homes.

Super built-up area 104.98 sq. mtr (1130 sq.ft.)



Floor Plan for HIG (3BHK) Dream Homes.

Super built-up area 132.38 sq. mtr. (1425 sq.ft.)



Best Quality

Specifications

| | | |
|---------------------|---|--|
| Structure | : | Certified earthquake resistant structure |
| Flooring | : | All flooring - Ceramic tiles Balconies - Anti skid ceramic tiles Toilets - Wall tiles - Glazed tiles Flooring - Anti skid ceramic tiles |
| Painting | : | Interior - Oil Bond distemper Exterior - Cement based paint |
| Kitchen | : | Marble platform with glazed tiles dado Single bowl S.S. Sink (Granite platform at extra cost) |
| Doors | : | Hard wood door frame and solid core pressed skin flush door with aluminium hardware fitting |
| Windows | : | Three track sliding aluminium window with M.S. Grill |
| Plumbing | : | Best quality |
| C.P. Fitting | : | Plumber |
| Electrical | : | Economical range of Anchor switches |
| Lift | : | 2 lifts with power back up in each block. |
| Security | : | Independent campus with security guard and 6 ft. high boundary wall. |

Aakriti Greens Location

- Close to the city • Accessible • Pollution-free

Aakriti Greens is just 500 meters from Aakriti Eco-City.

