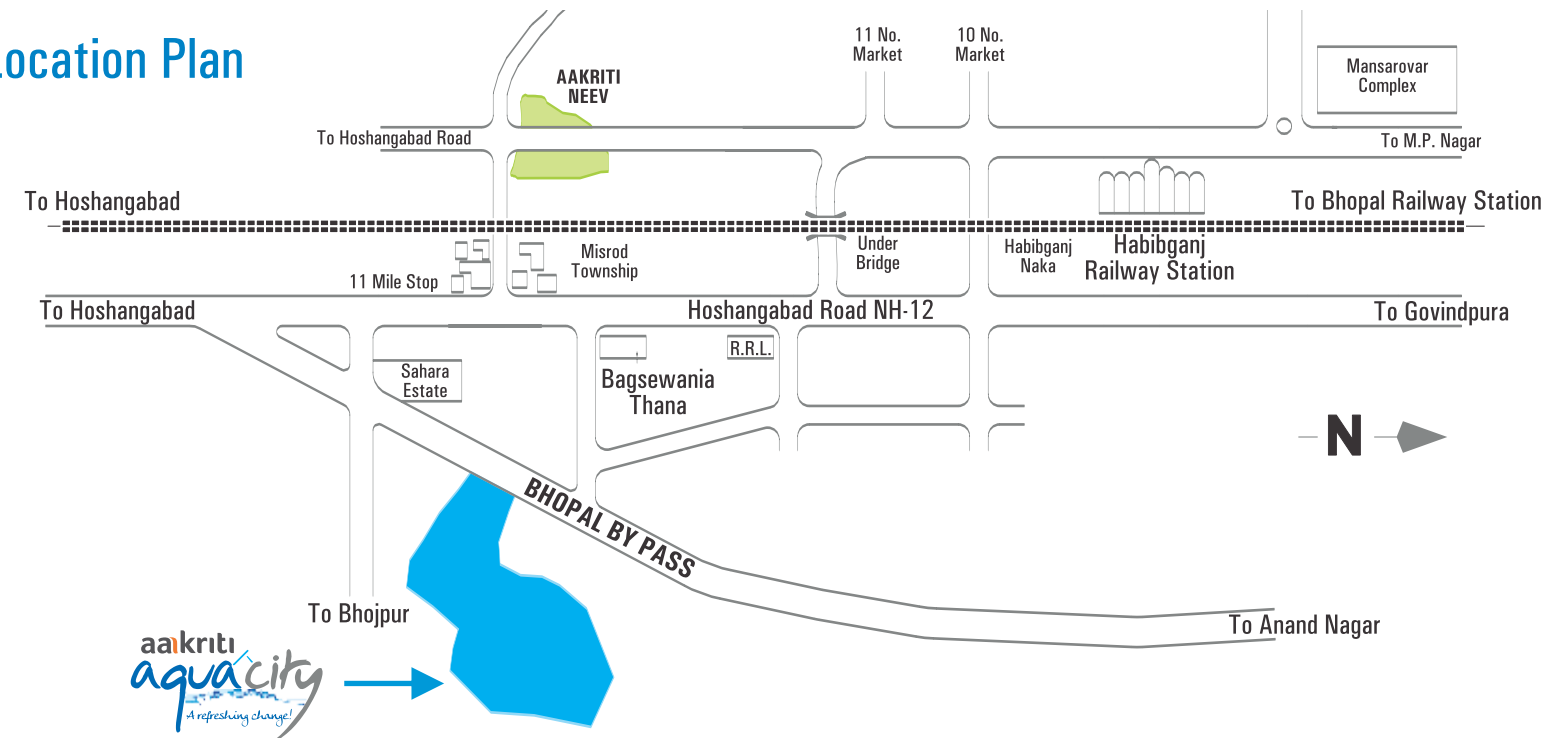


Bhopal – City of Lakes lies at the heart of our nation. And located in this city are the glorious high-rise apartments Tapti & Gomti, inside Aakriti Aqua City, an opulent township developed merely kilometers from the commercial heart of Bhopal City. The site is located at the 11 Mile, Hoshangabad bypass road. Located in close proximity to a Prime Commercial & Residential Areas of New Bhopal, the entire area around the township is undergoing a massive redevelopment as many large projects are taking shape in the region.

Distance from Utility Centers & Important Landmarks

Best Price	3.5 Kms
Noble Hospital	4.6 Kms
C21 Mall	5.1 Kms
Ashima Mall	7.6 Kms
AIIMS	11.6 Kms
Habibganj Railway Station	12 Kms
ISBT	12.5 Kms

Location Plan



For bookings, contact: +91-9098-088-088
Site : Aakriti Aqua City, 11th Mile, Hoshangabad Bypass Road, Bhopal.
Corporate Office : AG8 Ventures Ltd., Aakriti House, Aakriti Eco-City, E-8, Extension, Bhopal - 462026
Website : www.aakriti.com

Disclaimer: All perspective and dimension are indicative and may change. the developer reserves the right to amend plans and specification as may be required. Any information contained in the brochure is subject to change without prior notice at the sole discretion of the developer and can not form part of any agreement.



A refreshingly different way of living.



Unit Plan

A refreshingly different way of living.

The Aqua City, developed by the renowned Aakriti is a refreshingly new concept in township-living. It's designed in a way that'll give 'living in a township' a whole new meaning. Built around water, the entire township comes across as a well-planned oasis consisting of water bodies, abundant greenery and contemporary architecture, delivering quality housing and great lifestyle. At Aqua City, apart from peace and serenity, you'll find all modern amenities and facilities that a modern township has to offer. Simply put, the township offers nothing but the best of both the worlds!

Aqua City highlights:

- Separate Jain Temple along with main Temple inside the Campus.
- A 1.5 kms. jogging track by a river.
- Separate re-cycled water for gardening, washing, etc.
- Cement concrete road.
- Entrance Plaza secure with security and boundary wall.
- Underground sewage system.
- Water recharging system.
- Water supply system up to house terrace by overhead tank.
- Underground electrification with street light pole.
- Beautiful landscaping in open area and along road with children play zone.
- Space for School building.
- Space for Hospital.
- Clubhouse.

Apartment Specifications

Structure	R.C.C. Framed.
Brick Work	AAC Block • Outer plaster. • Inner finishing by putty.
Floor Tiles	Vitrified tiles all over.
Kitchen Platform	Green Marble with good quality sink.
Paint	External - One coat exterior paint. • Internal - One coat O.B.D.
Toilets	Good quality sanitary/plumbing fitting.
Electrical	Wiring and switches/sockets of good quality.
Lift	Good quality lift with 6 passenger capacity.
Doors	Flush doors with chrome polished hardware.
Windows	Aluminum two track window.
Parking Area	IPS flooring.

Corner Flat



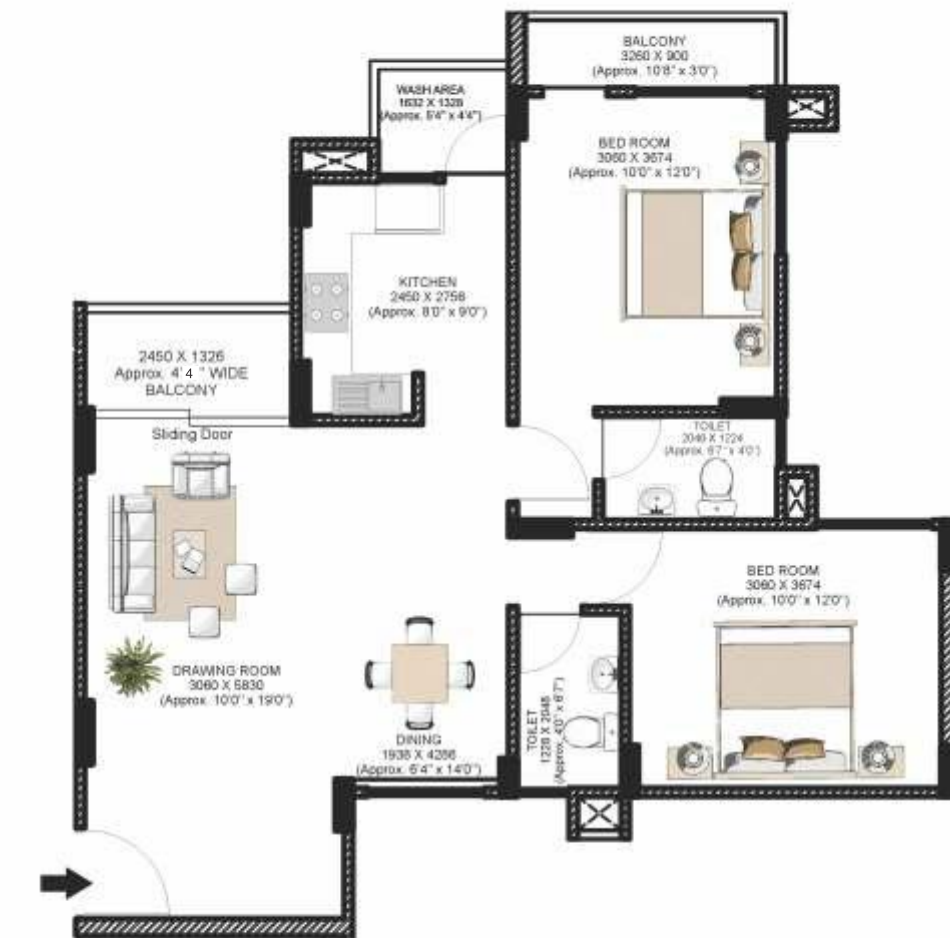
Saleable Area

- Corner Flat : 104.51 sq.mtrs (1125 sq.ft.)

Builtup Area

- Corner Flat : 77.42 sq.mtrs. (833.35 sq.ft)

Center Flat



Saleable Area

- Center Flat : 101.72 sq.mtrs. (1095 sq.ft.)

Builtup Area

- Center Flat : 75.35 sq.mtrs. (811.06 sq.ft)

