




An ISO 9001:2008 Company

Developing India

**AMRAPALI  
GROUP**

**AMRAPALI GOLF HOMES  
PRESENTS**

**AMRAPALI  
KINGSWOOD**

2,3,4 BEDROOM  LUXURY APARTMENTS  
G.NOIDA (WEST)



Corporate Office : C-56/40, Sector-62, Noida (near FORTIS)

Ph. : 0120-4055555 Fax : 0120-4233556

E-mail : [mkt@amrapali.in](mailto:mkt@amrapali.in) Website : [www.amrapali.in](http://www.amrapali.in)

SMS

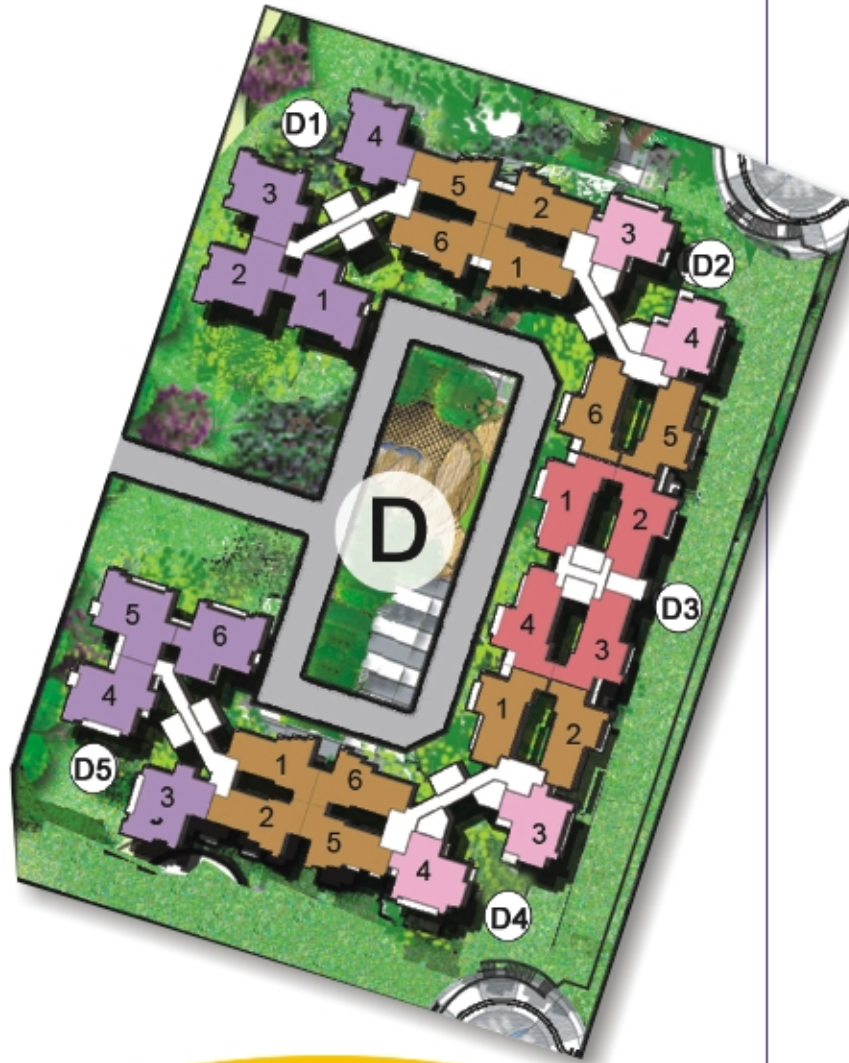
Amrapali to 56677

**Floor Plan**

APARTMENTS • MALLS & MULTIPLEXES • SEZs • IT PARKS • HOTELS • HOSPITALS • EDUCATION • FMCG (Mum's)

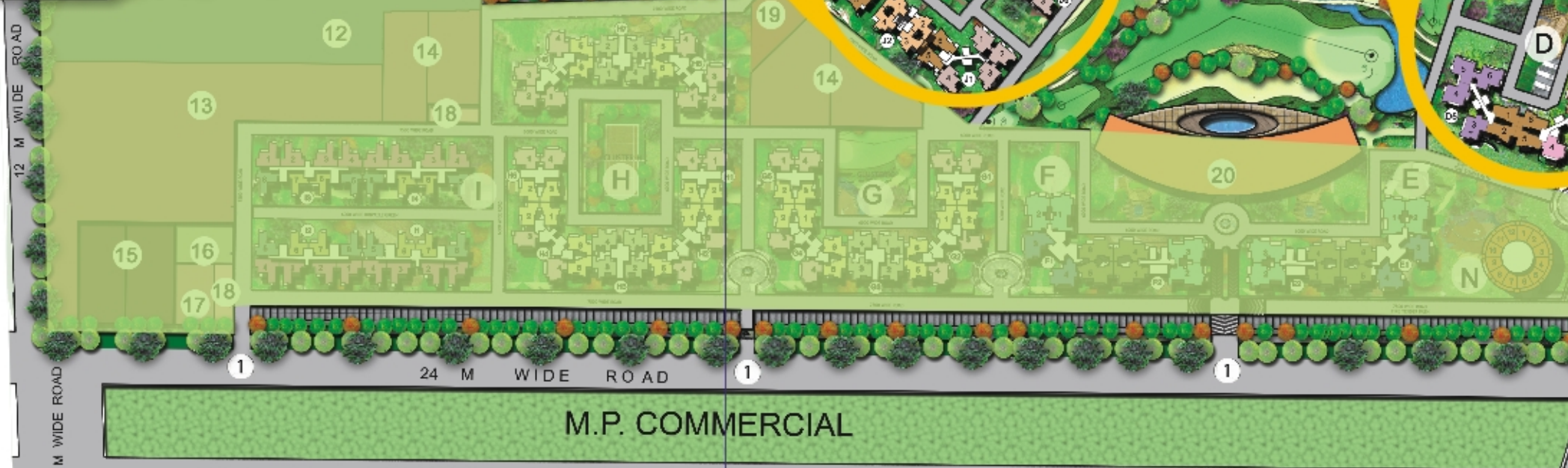
Conditions apply

# THE SITE



## LEGEND

1. MAIN ENTRANCE
2. AMPHITHEATRE
3. JOGGING TRACK
4. LAWN
5. CLUB HOUSE
6. BASKETBALL COURT
7. TENNIS COURT
8. SIT-OUT PAVILION
9. KIDS ZONE
10. WATER BODY
11. SWIMMING POOL

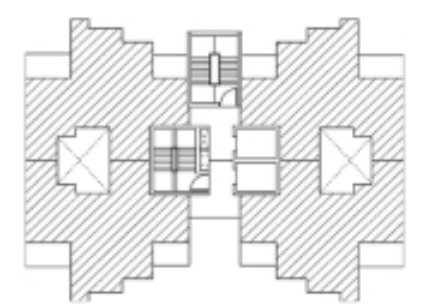


2 BHK (835 SFT)	3 BHK + 2 TOI (1115 SFT)	3 BHK + 2 TOI (1425 SFT)	3 BHK + 3 TOI (1595 SFT)
2 BHK + 2 TOI + STUDY (945 SFT)	3 BHK + 2 TOI (1115 SFT) OPTION-1	3 BHK + 2 TOI (1425 SFT) OPTION-1	

**2 Bedrooms**  
 + 2 Toilets  
 Super Area : 835 Sq. Ft.

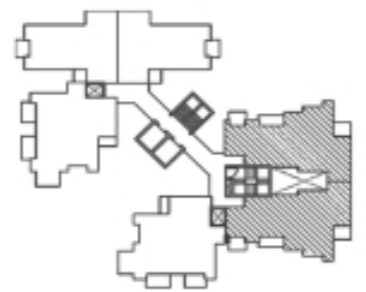


**2 Bedrooms**  
 + 2 Toilets + Study  
 Super Area : 945 Sq. Ft.



# 3 Bedrooms

+ 2 Toilets  
Option - I  
Super Area : 1115 Sq. Ft.



Note : Visual representations shown in this brochure are purely conceptual. All Building Plans, Specifications, Layout Plans etc. are tentative and subject to variation & modification by the company or the competent authorities sanctioning plans.

# 3 Bedrooms

+ 2 Toilets  
Super Area : 1115 Sq. Ft.

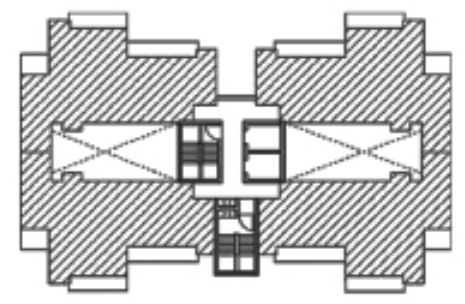


Note : Visual representations shown in this brochure are purely conceptual. All Building Plans, Specifications, Layout Plans etc. are tentative and subject to variation & modification by the company or the competent authorities sanctioning plans.

**3 Bedrooms**  
 + 2 Toilets  
 Super Area : 1425 Sq. Ft.



**3 Bedrooms**  
 + 2 Toilets  
 Option - I  
 Super Area : 1425 Sq. Ft.



**3 Bedrooms**  
 + 3 Toilets  
 Super Area : 1595 Sq. Ft.



Note : Visual representations shown in this brochure are purely conceptual. All Building Plans, Specifications, Layout Plans etc. are tentative and subject to variation & modification by the company or the competent authorities sanctioning plans.

**THE LOCATION**

**AMRAPALI KINGSWOOD**  
 2,3,4 BEDROOM LUXURY APARTMENTS  
 G. NOIDA (WEST)



# THE Specifications

## STRUCTURE

Earthquake Resistance RCC Framed.

## BEDROOMS

FLOOR : Flooring with Vitrified Tiles / Equivalent & Laminated Wooden Flooring in Master Bedroom.

WALLS : OBD Paint CEILING : Designer POP.

## LIVING/DINING / LOBBY PASSAGE

FLOOR : Vitrified Tiles / Equivalent.

WALLS : OBD Paint. CEILING : Designer POP.

## KITCHEN

WALLS : Designer Ceramic Tiles with Highlighter in between upto 2 ft. above the Counter.

FLOOR : Combination of Anti Skid Ceramic Tiles / Vitrified Tiles.

COUNTERS : Granite Working Platform.

FITTINGS / FIXTURES : CP Fittings, Stainless Steel Sink.

WOOD WORK : Semi-Modular Kitchen.

## TOILETS

WALLS : Designer Ceramic Tiles.

FLOOR : Combination of Anti Skid Ceramic Tiles / Vitrified Tiles.

FITTINGS / FIXTURES : ISI Mark Fittings, Standard Chinaware Fixtures & Fittings for Geyser Water Supply.

WATER : Hot and Cold Water Pipeline Provision.

## LIFT LOBBY

FLOOR : Combination of Different Colours of Marble / Stone in Pattern.

WALLS : Tiles Cladding upto 3 ft. and Texture Paint above.

ELEVATOR : High Speed Elevator.

## ELECTRICAL

Modular Switches : 24 Hrs. Power Backup Provision.

## WATER

Drinking Water Treatment Facility by Individual R.O. System.

## DOORS

ENTRANCE DOORS : Hardwood Frame with Flush Door Shutter with Teak Veneer Top and Melamine Polish.

INTERNAL DOORS : Polished Skin Doors.

## WINDOWS

UPVC.

## BALCONY

FLOOR : Anti Skid Ceramic Tiles. WALL & CEILING : OBD Paint.



An ISO 9001:2008 Company

Developing India

# AMRAPALI GROUP

CORPORATE OFFICE : C-56/40, Sector-62, Noida. Ph. : 0120-4055555 | Fax : 0120-4233556

E-mail : [mkt@amrapali.in](mailto:mkt@amrapali.in) | Website : [www.amrapali.in](http://www.amrapali.in) | SMS "Amrapali" to 56677

APARTMENTS • MALLS & MULTIPLEXES • SEZs • IT PARKS • HOTELS • HOSPITALS • EDUCATION • FMCG (Mum's)